

JOIN US FOR A DELICIOUS WAY TO
RAISE MONEY!

Date: Apr 21, 2026

Time: 11:00AM to 9:00PM

For Dine In, Takeout or Curbside at this BJ's Location:

25660 Northwest Fwy
Cypress, TX 77429
281-335-6860

Enjoy delicious food in a fun atmosphere along with your family
and friends while earning funds in support of:

Warner Elementary Spirit Night

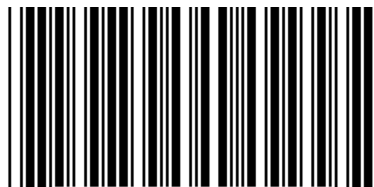
**WITH EACH FLYER PRESENTED DURING THIS FUNDRAISING EVENT, BJ's WILL DONATE
20% OF FOOD AND SOFT BEVERAGE SALES TO THE DESIGNATED ORGANIZATION!**

VISIT US IN PERSON, ORDER ONLINE OR PLACE A TAKE-OUT ORDER

When dining in: Present this flyer to your server at any time during your meal.

When ordering online: Enter the 6-digit fundraiser code below at the time of checkout.

When placing a take-out order: Present this flyer to a BJ's team member upon your arrival.



A P R 6 9 8

Valid for dine in, takeout or curbside when applicable. Not valid toward alcoholic beverages, Happy Hour specials or for delivery orders.
Please do not distribute flyers on site during the event.



BEHIND THE SCREEN

Protecting Kids from Online Predators



Learn about the latest trends and how to keep your child safe from online predators

Presenter: Sgt Amy Gonzales
Criminal Investigator for the Internet Crimes Against Children Task Force in Texas

When: Thursday, April 23 from 5:30-7:00 PM

Where: Smith Middle School
10300 Warner Smith Blvd, Cypress, TX 77433

Local Statistics:

RSVP HERE:



10-17

Age range of children most often targeted by child predators online

527

Arrests for online solicitation of a minor and promotion of child pornography in Texas

704

Convictions for online solicitation of a minor and promotion of child pornography in Texas

Lady Sabercats

VOLLEYBALL CAMP

DATE **11-13**
MAY

OPEN for Girls:
Incoming 6th, 7th, and 8th
graders

Camp Time:
3:30-5:30 pm each day



Performance &
Auxillary Gyms



Admission

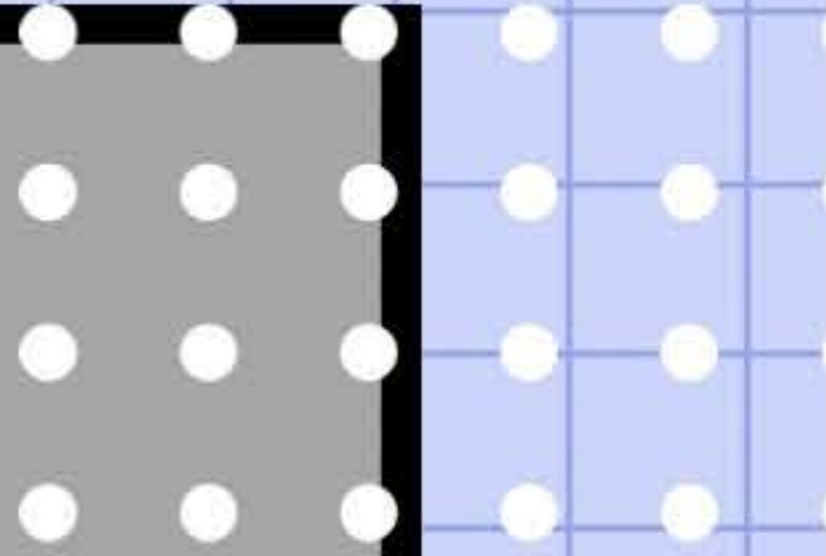
\$75

Registration Link





2025-2026

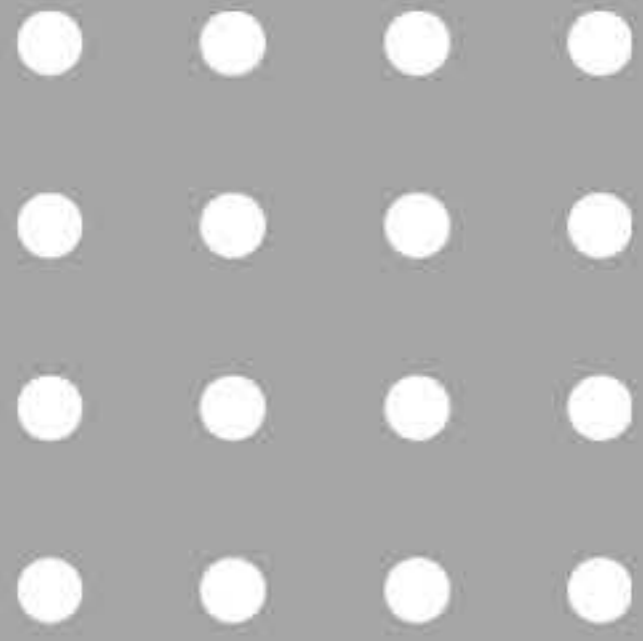


**BUY
YOUR**



THRU 8/8!

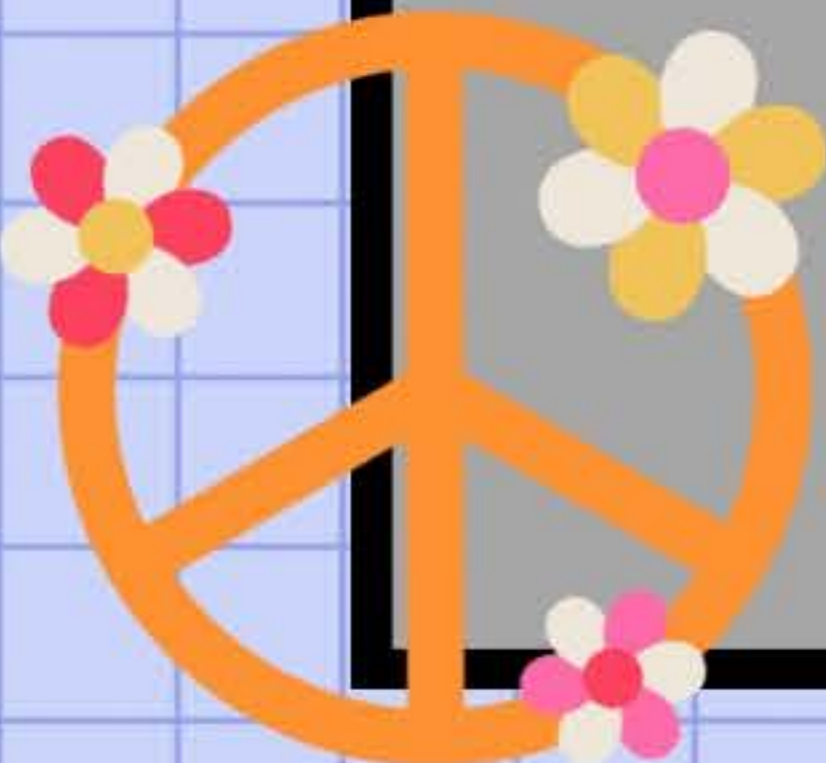
YEARBOOK!



**BUY
NOW,
SAVE
BIG**



**AUG. 9-OCT. 31: \$45
NOV. 1-JAN. 11: \$50
FEB. 1-APRIL 31: \$55
MAY 1: \$60**



WWW.JOSTENS.COM

CYPRESS RANCH SOFTBALL CAMP



\$100

6TH-9TH GRADE

8AM-11AM

JUNE
15-17



7th-9th grade must have a **physical** and **Rank One** online forms completed. Students must live in the Cypress Ranch attendance zone.

Scan QR to
register

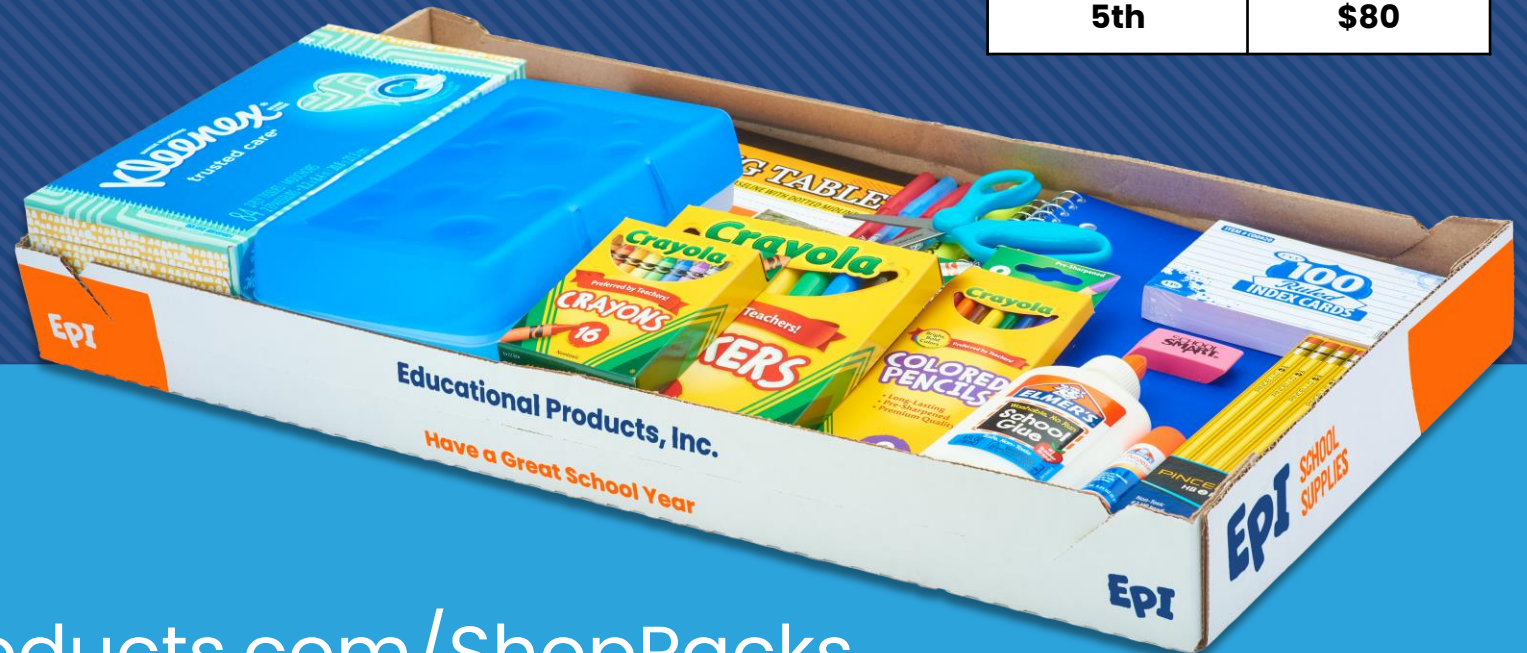
Warner Elementary School Supplies

Deadline: July 1st

Order a Pack Today!



Grade Level 2026-27	Cost Each
Pre-K	\$90
K	\$65
1st	\$65
2nd	\$55
3rd	\$65
4th	\$68
5th	\$80



www.EducationalProducts.com/ShopPacks

2026 – 2027 Warner Elementary School Supply List

All School supply sales will be sold ONLINE ONLY starting **April 20th – July 1st**. School supplies will be delivered to your child's class by the first day of school . To PRE-ORDER the supplies: Go to www.educationalproducts.com/shoppacks and enter our school ID WAR106.

PRE-KINDER

- 4 24ct Crayola Crayons
- 6 Large Elmer Glue Sticks
- 1 Box Kleenex Tissue 144ct
- 1 Sturdy Pencil Box
- 2 Washable Crayola Thick Classic Markers 10ct
- 1 Pack of 4 Expo Black Low Odor Dry Erase Fine Tip (skinny) Marker
- 1 Pair of Fiskars 5" Blunt Scissors
- 1 Washable Watercolors w/brush- 8 count
- 1 Sharpened #2 pencils- 12 count
- 1 Yellow, 1 Red, 1 Blue Plastic Pocket & Brad Folder
- 1 4oz bottle Elmers Glue
- 1 12ct Colored Pencils
- 1 Ream of Computer Paper
- 1 Container of Clorox Wipes
- 1 Bottle of Hand Sanitizer
- 2 3oz Containers of Play-Doh

KINDERGARTEN

- 1 Box of 12 No. 2 Dixon Pencils (Pre-sharpened)
- 4 Boxes Crayola Crayons 24ct
- 1 pink Pearl Eraser (Latex free)
- 3 Packs of 4 Expo Fine Tip Dry Erase Markers – Black
- 6 Elmer's Small Glue Sticks
- 1 Fiskars 5" Blunt Scissors
- 1 Box Kleenex Tissue 144ct
- 1 Plastic School Box 8.5x5.75x2.5
- 1 Spiral Red Wide Ruled Notebook
- 1 Blue Pocket Folder w/Brads
- 1 Crayola Washable Thick Classic Markers 10ct
- 1 Red Plastic -Poly 3 Hole Punch Folder
- 1 Crayola 7" Colored Pre-Sharpended Pencils 12ct
- 1 Clear View 3 Ring White Binder 1/2 inch

First Grade

- 24 No. 2 Pencils
- 3 Boxes Crayola Crayons 24ct
- 1 Crayola Washable Thick Classic Markers 10ct
- 1 White Eraser
- 4 Elmer's Giant Glue Sticks
- 1 Red, 1 Blue, 1 Yellow, and 1 Green Plastic Folders w/brads
- 2 Primary Composition w/ Red Baseline (No picture space)
- 1 Box Kleenex Tissues 144ct
- 1 Zipper Bag Canvas
- 2 Packs of 4 Expo Fine Tip Dry Erase Markers Black
- 1 Marble Story Comp Book Red Baseline 100ct
- 20 Sheet Protectors
- 1 Fiskars 5" Blunt Scissors

Second Grade

- 24 No. 2 Dixon Pencils
- 1 Crayola Washable Thick Classic Markers 10ct
- 2 Boxes Crayola Crayons 24ct
- 4 Expo Low Odor Black Chisel Tip Dry Erase Markers
- 2 Sharpie Accent Pen Style Highlighter Yellow
- 1 Magic Rub Eraser (Latex Free)
- 4 Elmer's Small Glue Sticks
- 1 Green & 1 Blue Wide Ruled Notebook 100ct
- 1 Wide Ruled 8X10.5 Filler Paper 200ct
- 1 Red & 1 Blue Pocket Folders w/Brads
- 2 Composition Notebooks 1 Red & 1 Yellow
- 1 Nylon Pencil Bag Clear Top w/Grommets
- 1 Boxes Kleenex Tissues 144ct
- 1 Fiskars 5" Blunt Scissors
- 1 Green Plastic Pocket Only Folder



2026 – 2027 Warner Elementary School Supply List

All School supply sales will be sold ONLINE ONLY starting **April 20th – July 1st**. School supplies will be delivered to your child's class by the first day of school . To PRE-ORDER the supplies: Go to www.educationalproducts.com/shoppacks and enter our school ID WAR106.

Third Grade

- 36 No. 2 Dixon Pencils Sharpened
- 1 Crayola Washable Fine Tip Classic Markers 10ct
- 1 Box Crayola 7" Colored Pencils 12ct Pre-Sharpended
- 3 Expo Low Odor Black Dry Erase Markers Thin
- 1 Yellow and 1 Orange Sharpie Accent Pen Highlighter
- 2 Magic Rub Erasers (Latex Free)
- 3 Elmer's Large Glue Stick
- 1 Green Wide Ruled Spiral Notebooks 100ct
- 2 Wide Ruled 8x10.5 Filler Paper 100ct
- 1 Yellow & 1 Blue Pocket Folder w/Brads
- 1 Red Plastic Folder w/3 Holes
- 1 Fiskars 5" Blunt Scissors
- 2 Box Kleenex Tissues 144ct
- 2 Red & 1 Yellow Wide Ruled Marble Comp Books 100ct
- 1 Pencil Bag

Fourth Grade

- 48 No. 2 Dixon Pencils Pre-sharpened
- 1 Crayola Washable Fine Tip Classic Markers 8ct
- 2 Magic Rub Erasers (Latex Free)
- 4 Elmer's Small Glue Sticks
- 2 Wide Ruled Black Marble Comp Books 100ct
- 2 Wide Rule 8x10.5 Filler Paper 200ct
- 1 Blue, 1 Yellow, 1 Green, 1 Orange, & 1 Purple Folders w/Brads
- 1 Box Crayola Colored Pre-Sharpended Pencils 12ct
- 2 Box Kleenex Tissues 144ct
- 4 Thin Dry Erase Marker Black
- 1 Blue & 1 Purple Spiral Wide Ruled Notebooks 100ct
- 1 Red Spiral Notebooks 70 Count
- 1 Red Pocket and Brad Folder
- 2 Thin Yellow Highlighters
- 1 Fiskars 5" Blunt Scissors
- 1 Pencil Pouch

Fifth Grade

- 36 No. 2 Dixon Pencils
- 1 Crayola Washable Fine Tip Classic Markers 10ct
- 4 Elmer's Large Glue Sticks
- 1 Box Crayola 7" Colored Pencils Pre-Sharpended 12ct
- 1 Yellow, 1 Pink, 1 Blue, 1 Green and 1 Orange Sharpie Highlighters
- 2 Wide Ruled Black Marble Comp Book 100ct
- 2 3-Subject Notebooks 120ct
- 1 Wide Ruled 8x10.5 Filler Paper 200ct
- 1 Red Plastic Pocket Folder with Brads
- 1 Green Plastic Pocket Folder
- 2 Fiskars 5" Blunt Scissors
- 1 11x7.5 Natural Canvas Pencil Bag w/Grommets
- 1 Blue Poly Pocket folder
- 2 Box Kleenex Tissues 144ct
- 4 Expo Low Odor thin
- 1 Ream of printer paper





Class of 2026

**For all Fifth Graders and Graduating Seniors who attended
Warner Elementary.**

High school seniors wear your cap and gown and wear your school ID! You may also bring a sign to showcase the college you are attending

When: Thursday, May 28th

High School Seniors @ 9:30 am, please arrive by 9:15 am

5th Graders @ 10 am

Where: Seniors enter through Gate A on the left side of the school to enter the gym. All parents (for 5th graders and seniors) will wait outside to celebrate students as they exit the building.

PAW PRINT REMOVAL

May 28th



Parents you are invited to pick up your students paw print beginning after the final walk on Thursday, May 28th - Tuesday, June 2nd.

If you are unable to pick up the paw print or you are not interested in trying to save it, a parent volunteer will remove and dispose of it beginning Wednesday, June 3rd.



**MAY 14
2026**

5:00PM-6:30PM

SABERCAT SHOWCASE

- WALK THE BUILDING
- PARENT MEETING
- STUDENT PEP RALLY
- SABERCAT STORE

**SAVE
THE
DATE**

**IDEAL
AUDIENCE**

- INCOMING 6TH GRADERS
- TRANSFER STUDENTS

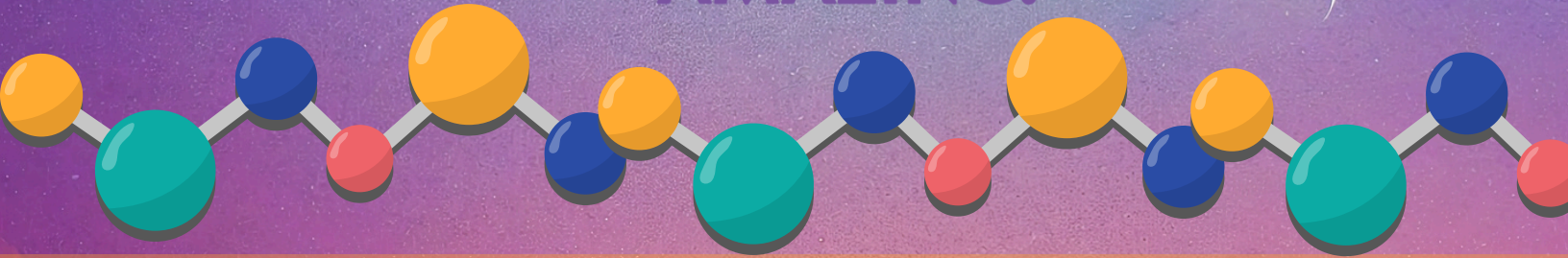


COMMUNITY PROGRAMS

CAMP CAPTIVATE

2026

CHOOSE *the path* TO AMAZING!



LOCATION

**A. ROBISON
ELEMENTARY**

17100 Robison Woods
Rd, Cypress, TX 77429

Incoming K-8

9 AM - 2 PM (Mon-Thur)

RATES

\$170 PER WEEK
Due at the time of
registration

BEFORE CARE

6:30-9:00 AM
\$40/Week

AFTER CARE

2:00-6:30 PM
\$75/Week

DATES

June 15- 18

June 22 - 25

July 6 - 9

July 13 - 16

Secure your spot for one of our CFISD specialty camps for students in grades K-8. Camp topics include Technology, Arts & Crafts, STEAM, Drama, Science, Legos, Cooking, Sports, and so much more!

To register, visit: www.cfid.net/summercamps.
For additional information or questions, contact
clubrewind@cfid.net or 281-807-8900.



SUMMER CAMP

2026

LET'S
GLOW



DATES

June 8 – July 16 (Mon-Thur)

LOCATION & HOURS

Lamkin Elementary
(Incoming K-6)
11521 Telge Rd.
Cypress, TX 77429

 6:30 AM - 6:30 PM

RATES

FULL AMOUNT DUE AT
REGISTRATION

\$175 /WEEK STANDARD RATE

\$155/WEEK CFISD STAFF RATE

\$145/WEEK FREE & REDUCED
LUNCH RATE

Activities may include Sports and Indoor Games, STEM Challenges, Arts & Crafts, Field Trips, & exclusive On-Site Activities

Summer Camp operates as a licensed full-day childcare program. To register, visit: www.cfisd.net/summercamps. For additional information or questions, contact clubrewind@cfisd.net or 281-807-8900.

WARNER SPIRIT DAY

ON FRIDAYS!



Wear your Warner spirit
shirt every week!

Haven't purchased your shirt yet? Shop at: warnerpto.org!

Students may wear any Warner shirt or navy/blue works too!

CFISD Chromebook Week and Device Check

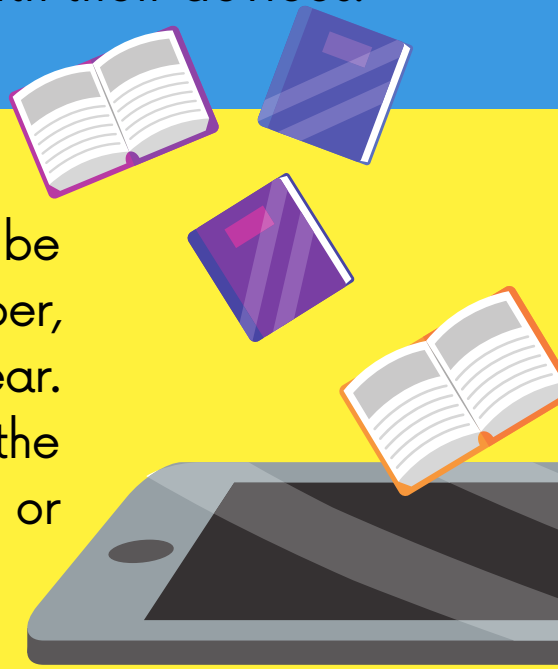


What is it?

Chromebook Week and Device Check are designed to effectively track Chromebooks and ensure that the device receives all the required updates. In addition, students can submit support tickets for any issues they encounter with their devices.

When is it?

Chromebook Week and Device Check will be the last full week in September, November, January, and March each school year. Tuesday, Wednesday, and Thursday will be the log-in days. Campuses choose the period or time of day.



What do we need students to do?

- Power off their devices and then turn them back on.
- Sign into their Google account and the student portal.
- Use the device for at least 15 minutes. Submit a support ticket if there are
- problems with the device.

What kind of issues require a support ticket?

- Cracked screen
- Touch screen not working correctly
- Device won't connect to the internet
- Headphones won't work when connected
- Cracks on lid or keyboard
- Missing keys
- Won't charge
- Lost charger/case/device



How can you help?

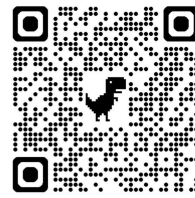
- Make sure that students bring their devices each day during Chromebook week.
- Help students follow the process of shutting the device down and then logging back into the device.
- Ask students if they have put a support ticket for device issues.



GET

Connected!

FOLLOW US ON SOCIAL MEDIA!

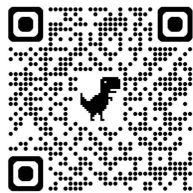


Warner Elementary CFISD

Instagram



warner.spike



@WarnerCFISD

#SPIKE&YOURKNOWLEDGE

EARN CASH FOR SCHOOLS WITH BOX TOPS

TOGETHER, WE CAN MAKE A BIG DIFFERENCE



MAKE EVERY RECEIPT COUNT



BUY



SCAN



EARN

**DON'T HAVE THE BOX TOPS
APP YET? DOWNLOAD IT NOW:**

WARNER ELEMENTARY
CYPRESS, TX



Referral Code: MA0V52WP

PBIS Rewards

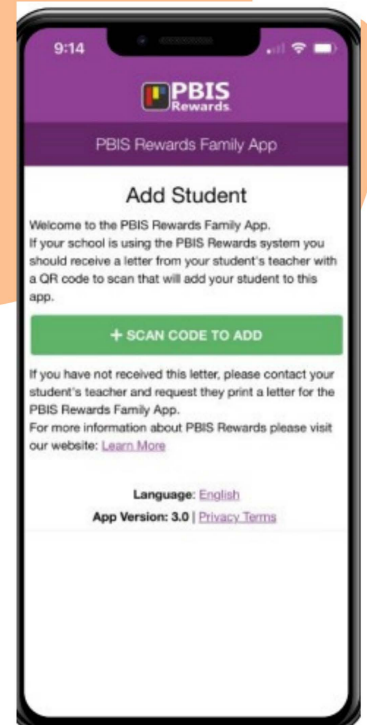
FAMILY APP INFORMATION

WHAT IS IT?

As part of the PBIS Rewards suite of apps, the free PBIS Rewards Family App allows parents and guardians to view student point totals, items purchased with points, and upcoming events for which points can be used.

HOW DO I GET CONNECTED?

Once you download the app onto a smartphone, you can scan a QR code to activate a student in the app. This QR code is unique to each student and is provided to the parent via a letter from the school. The app confirms the QR code, allowing the parent to access to their student's point totals and progress as the school year goes along.



STEPS TO GET CONNECTED

1

Download the PBIS Rewards Family app on your device.

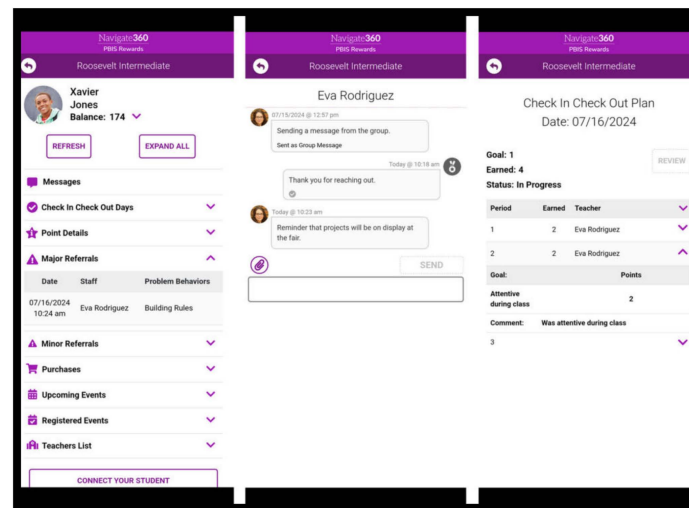


2

Wait for a text or email from your child's teacher which will include a link and QR code to help you get connected to your child.

3

- Communication**
 - Two-way messaging
- Points**
 - view teacher comments for points awarded
- Purchases made by student**
- Contact information for all teachers so parents/guardians can contact staff directly from the app.**



WHY SHOULD I USE IT?

The PBIS Rewards Family App allows parents and guardians to track the progress and point totals of students. The parent/guardian can view the information for each child. The school can generate paper letters, emails, and/or text messages to connect parents and guardians with their students within the app.

REMEMBER...

Remember that...

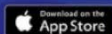
- This is an easy way to communicate with your child's teacher.
- Reinforce good behavior at home.
- Have conversations with your child about the behaviors and decisions that they make at school.

WHAT BUS DO I RIDE?

MY RIDE K-12

Download the My Ride K-12 app to receive the most accurate transportation information for your student.

Scan the QR Code below for more information.



Register for an account with
My Ride K-12

For questions call 713-MYCFBUS (713-692-3287).

Health Guidance for Going to School



Showing up to school every day is critical for children’s well-being, engagement and learning.

Make sure to send children to school if they are:

- Generally healthy and well.
- Participating in usual day-to-day activities.
- Children can even go to school if they:
 - Have a mild cold, which may include a runny nose and/or cough.
 - Have eye drainage without fever, eye pain or eyelid redness.
 - Have a mild stomachache.
 - Have a mild rash with no other symptoms.
 - Have been fever free for 24 hours without the use of fever-reducing medication.

Avoid keeping children at home unless they are too sick to participate. Please see the back of this handout for details. Note that in most situations, a health-care provider’s note is not needed to return, you can send a parent note.

Children may also avoid school due to anxiety (symptoms may include decreased appetite, feeling tired, stomachache, headache, etc). If you are worried that your child may be suffering from anxiety, talk with your child’s teacher, the school nurse, counselor or other school staff to discuss the challenge and identify what can help your child stay in school.

Please note: This document is not meant to take the place of local health department guidance about contagious illnesses such as Covid-19 and the flu.



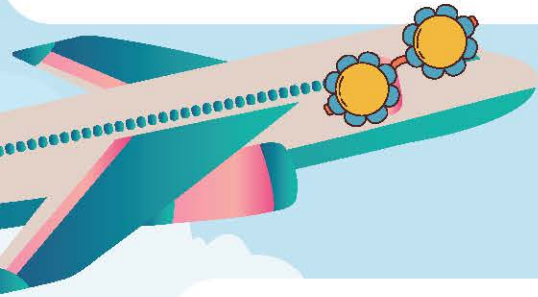
Reasons to keep me home from school and what needs to happen before I can return

What is my symptom?	When should I stay home and when to seek medical care?	When can I return to school?
Fever	I have a fever of 100.0°F or higher. Seek medical care if I have fever and any of the following: ear pain, sore throat, rash, stomachache or tooth pain.	If I have been fever free for 24 hours without the use of fever-reducing medication and I am feeling better.
Vomiting and/or diarrhea	If I have vomited 2 or more times in the last 24 hours. If my stool is watery and I may not make it to the toilet in time. Seek medical care if I have stomach cramping and fever, I have bloody or black stool, or I am showing signs of dehydration (tired and sleepy, dry mouth and not urinating at least once in the last 8 hours).	If I have not had vomiting and/or diarrhea in the past 24 hours and I am feeling better.
Persistent cough or trouble breathing	Seek medical care if I have a persistent cough, difficulty breathing or trouble catching my breath or if I develop a fever with the cough. These symptoms may be signs of a serious or contagious illness that should be evaluated by a health-care provider.	Once I am feeling better and I have been cleared for return by my health-care provider. If my symptoms were due to asthma, please make sure that I have my breathing medication available to use at school.
Rash	Seek medical care if the rash has blisters, is draining, is painful, looks like bruises and/or if I develop a fever	Once my rash has healed or I have been cleared for return by my health-care provider.
Eye irritation	Seek medical care if I have eye swelling, eye pain, trouble seeing or an eye injury.	Once I am feeling better.
Sore throat	Seek medical care if I have drooling, trouble swallowing or a fever and/or rash.	Once I am feeling better if I have been fever free for 24 hours without fever reducing medication. If I was prescribed an antibiotic by my health-care provider, then I may return 24 hours after the first dose.

If you don't know whether to send your child to school or have specific concerns regarding your child's health, contact your child's health-care provider, a local urgent care or the school nurse.

WARNER FAMILY HOLIDAY PLANNER

It's never too late to start planning for child care or holiday fun! In an effort to maximize our time with your kiddos, we've put all the student holidays in one place!



THANKSGIVING BREAK

November 22-30

WINTER BREAK

December 19-
January 5

SPRING BREAK

March 7-15



LONG WEEKENDS

Aug 30- Sept 1
Oct 10-14
Nov 1-4
Jan 17-19
Feb 13-16
April 3-6
May 23-25



LAST DAY OF SCHOOL:

May 28



'25

JULY							AUGUST							SEPTEMBER						
S	M	T	W	T	F	S	S	M	T	W	T	F	S	S	M	T	W	T	F	S
		1	2	3	4	5						1	2	1	2	3	4	5	6	
6	7	8	9	10	11	12	3	4	5	6	7	8	9	7	8	9	10	11	12	13
13	14	15	16	17	18	19	10	11	12	13	14	15	16	14	15	16	17	18	19	20
20	21	22	23	24	25	26	17	18	19	20	21	22	23	21	22	23	24	25	26	27
27	28	29	30	31			24	25	26	27	28	29	30	28	29	30				
							31													

OCTOBER							NOVEMBER							DECEMBER						
S	M	T	W	T	F	S	S	M	T	W	T	F	S	S	M	T	W	T	F	S
			1	2	3	4							1		1	2	3	4	5	6
5	6	7	8	9	10	11	2	3	4	5	6	7	8	7	8	9	10	11	12	13
12	13	14	15	16	17	18	9	10	11	12	13	14	15	14	15	16	17	18	19	20
19	20	21	22	23	24	25	16	17	18	19	20	21	22	21	22	23	24	25	26	27
26	27	28	29	30	31		23	24	25	26	27	28	29	28	29	30	31			
							30													

'26

JANUARY							FEBRUARY							MARCH						
S	M	T	W	T	F	S	S	M	T	W	T	F	S	S	M	T	W	T	F	S
				1	2	3	1	2	3	4	5	6	7	1	2	3	4	5	6	7
4	5	6	7	8	9	10	8	9	10	11	12	13	14	8	9	10	11	12	13	14
11	12	13	14	15	16	17	15	16	17	18	19	20	21	15	16	17	18	19	20	21
18	19	20	21	22	23	24	22	23	24	25	26	27	28	22	23	24	25	26	27	28
25	26	27	28	29	30	31								29	30	31				

APRIL							MAY							JUNE						
S	M	T	W	T	F	S	S	M	T	W	T	F	S	S	M	T	W	T	F	S
			1	2	3	4						1	2		1	2	3	4	5	6
5	6	7	8	9	10	11	3	4	5	6	7	8	9	7	8	9	10	11	12	13
12	13	14	15	16	17	18	10	11	12	13	14	15	16	14	15	16	17	18	19	20
19	20	21	22	23	24	25	17	18	19	20	21	22	23	21	22	23	24	25	26	27
26	27	28	29	30			24	25	26	27	28	29	30	28	29	30				
							31													

IMPORTANT DATES
Aug. 4-12 Professional Days
Aug. 13 First Day of School
Sept. 1 Student/Staff Holiday
Oct. 10 Teacher Work Day/School Closure Make-up Day/Student Holiday/ Inclement Weather Day
Oct. 13-14 Student/Staff Holiday
Nov. 3 Student/Staff Holiday
Nov. 4 Teacher Work Day/ School Closure Make-up Day/ Student Holiday
Nov. 24-28 Student/Staff Holiday
Dec. 19-Jan. 2 Student/Staff Holiday
Jan. 5 Professional Day
Jan. 19 Student/Staff Holiday
Feb. 13 Professional Day
Feb. 16 Teacher Work Day/School Closure Make-up Day/Student Holiday/ Inclement Weather Day
March 9-13 Student/Staff Holiday
April 3 Student/Staff Holiday
April 6 Professional Day
May 25 Student/Staff Holiday
May 28 Last Day of School
May 29 Professional Day

GRADING PERIODS

- | | |
|-------------------|-------------------|
| Elementary | Secondary |
| Aug. 13 - Oct. 9 | Aug. 13 - Oct. 9 |
| Oct. 15 - Dec. 18 | Oct. 15 - Dec. 18 |
| Jan. 6 - March 6 | Jan. 6 - March 6 |
| March 16 - May 28 | March 16 - May 28 |

LEGEND

- Student/Staff Holiday
- Professional Day/Student Holiday
- First and Last Days of School
- Inclement Weather Day
- ★ Teacher Work Day/School Closure Make-up Day/ Student Holiday

ACCESS

Scan for web version

