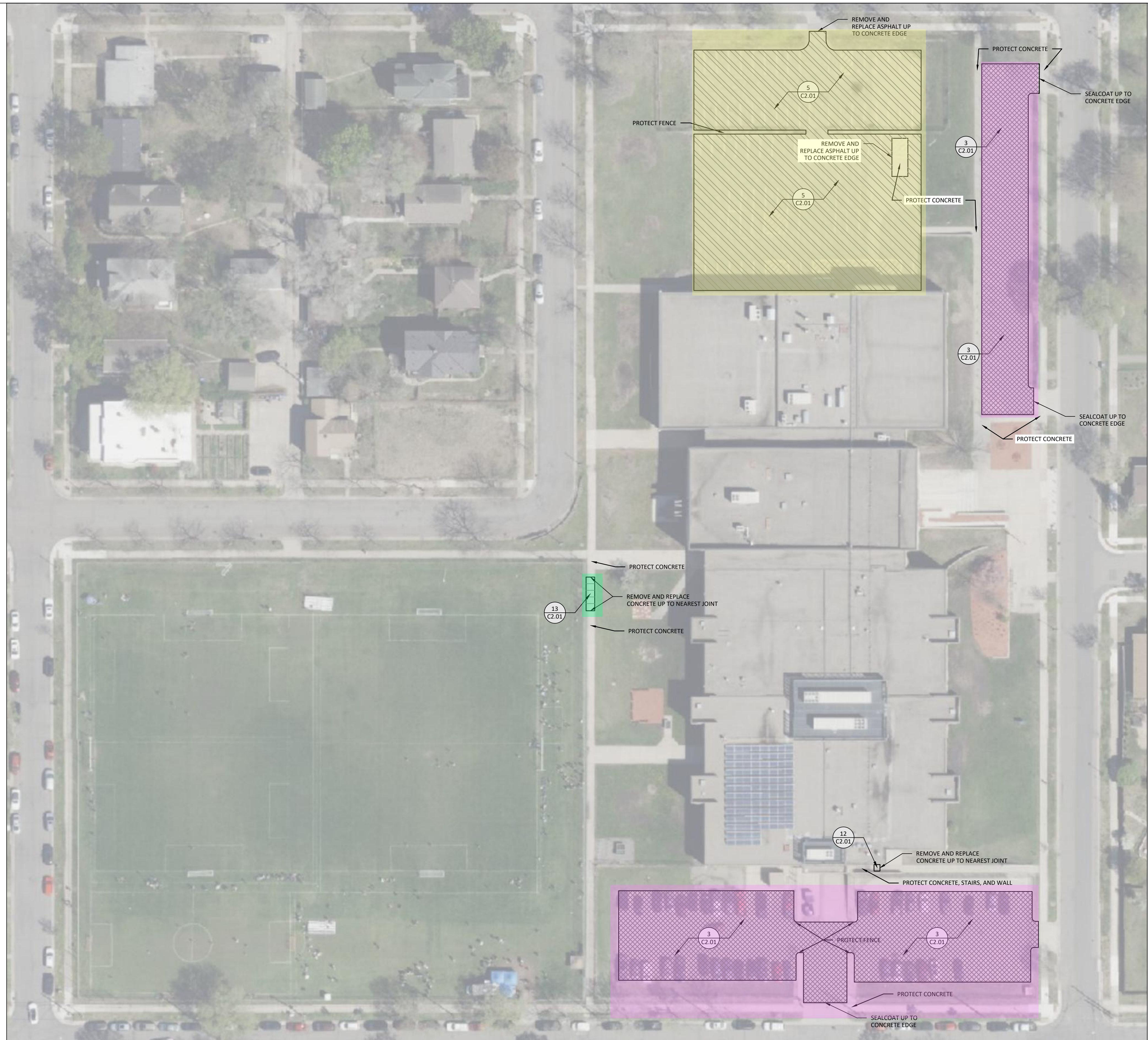


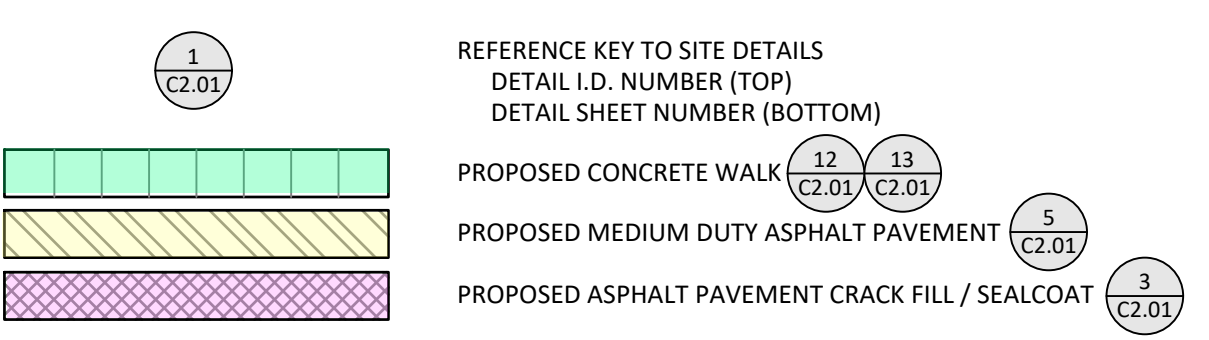
© Bolton & Menk, Inc. 2026. All Rights Reserved. 11/30/25_10_11m_26x142109000\CAD\CAD142109000_C_PRT1_M1.dwg 3/17/2026 1:44:14 PM



NOTES

1. REFER TO SHEET TO.01, TITLE SHEET, FOR RELATED GENERAL NOTES.
2. CONTRACTOR SHALL VERIFY ALL EXISTING CONDITIONS PRIOR TO THE BIDDING.
3. CONTRACTOR SHALL BE RESPONSIBLE FOR SHOOTING AND RECORDING EXISTING PAVEMENT SURFACE ELEVATIONS. ONCE BITUMINOUS PAVEMENT HAS BEEN REMOVED, THE CONTRACTOR SHALL BE RE-ESTABLISH ELEVATIONS THAT WILL ENSURE POSITIVE DRAINAGE AS APPROPRIATE.
4. RESTRIPE PARKING LOT STALLS AS APPLICABLE. OBSERVE AND MAP EXISTING PRIOR TO BEGINNING WORK.
5. WHERE CONCRETE BUMPER CURBS EXIST, CONTRACTOR TO REMOVE AND RESET AFTER ACCOMPLISHING PAVEMENT MAINTENANCE. REPLACE WITH NEW WHERE FOUND BROKEN, DETERIORATED, OR IF BROKEN DURING HANDLING.

LEGEND

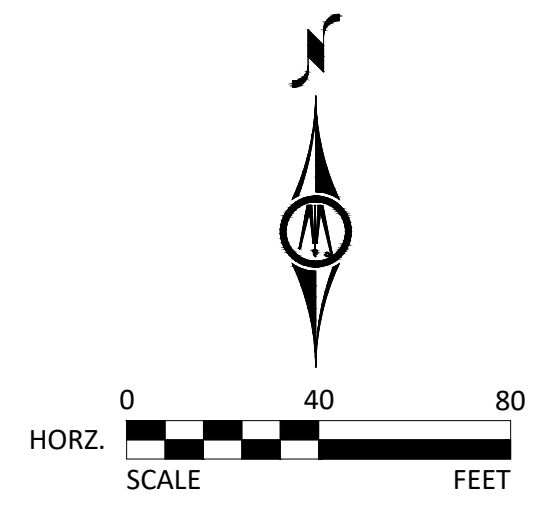


FRANKLIN MIDDLE SCHOOL QUANTITIES

THE CONTRACTOR SHALL VERIFY ALL EXISTING CONDITIONS, INCLUDING DETERMINATION OF ALL QUANTITIES, PRIOR TO THE WORK. BASE BID AMOUNT INCLUDES ALL WORK TO ACCOMPLISH THAT WHICH IS ILLUSTRATED ON THE PLAN, UNLESS OTHERWISE NOTED.

"ESTIMATED" QUANTITIES PROVIDED ARE FOR THE CONTRACTOR'S REFERENCE ONLY. "ASSUMED" QUANTITIES SHALL BE INCLUDED IN THE CONTRACTOR'S BASE BID COST. FINAL QUANTITIES WILL BE ADJUSTED USING UNIT PRICES.

1. NORTH PARKING LOT
 - 1.1. ASSUMED MEDIUM DUTY PAVEMENT = 3,500 S.Y.
2. EAST PARKING LOT
 - 2.1. ESTIMATED BITUMINOUS SEAL COAT/FOG SEAL = 1,050 S.Y.
 - 2.2. ASSUMED BITUMINOUS CRACK SEAL = 250 L.F.
3. SOUTH PARKING LOT
 - 3.1. ESTIMATED BITUMINOUS SEAL COAT/FOG SEAL = 2,300 S.Y.
 - 3.2. ASSUMED BITUMINOUS CRACK SEAL = 420 L.F.
4. ASSUMED CONCRETE PAVEMENT REPLACEMENT = 200 S.F.



I HEREBY CERTIFY THAT THIS PLAN, SPECIFICATION, OR REPORT WAS PREPARED BY ME OR UNDER MY DIRECT SUPERVISION AND THAT I AM A DULY LICENSED LANDSCAPE ARCHITECT UNDER THE LAWS OF THE STATE OF MINNESOTA.

JAY R. POMEROY
 LIC. NO. 23543 DATE MM/DD/YYYY



3300 FERNBROOK LANE NORTH, SUITE 300
 PLYMOUTH, MN 55447
 Phone: (763) 544-7129
 Email: Plymouth@bolton-menk.com
 www.bolton-menk.com

DESIGNED	NO.	ISSUED FOR	DATE
CDL			
DRAWN			
CCA			
CHECKED			
JRP			
CLIENT PROJ. NO.			
26X142109000			

MINNEAPOLIS PUBLIC SCHOOLS
 FY26 SITE WORK
 FRANKLIN MIDDLE SCHOOL

SHEET
 C1.03