

## Building for the Future: The 2026 Laurel High School Bond Proposal



**Community Investment**

As our community continues to grow, so do the needs of our students. This spring, Laurel Public Schools is presenting a comprehensive HS bond proposal to address critical facility upgrades and expand educational opportunities at Laurel High School.

**Future Jobs: Our CTE Facilities**

Our community has a need to produce more students with a background in the trades. Currently, our Career Technical Education (CTE) pathways rely on outdated classrooms and tired facilities. New and upgraded career and technical education facilities will help us prepare our students for the good paying open jobs that are needed for our society to function.

**More Than Just New Walls: Solving the Deferred Maintenance Challenge**

One of the most critical aspects of this proposal is fiscal responsibility. Currently, the high school is burdened by over millions in deferred maintenance. For years, our district has had to rely on "band-aid" fixes. Our current facility is aging. Classrooms are outdated and many systems including mechanical, lighting, and security, are outdated and driving up operational costs. Deferred maintenance is taking its toll on our budget and creating a learning environment that does not fully meet the needs of our students. This proposed bond builds on our 2023 vision but offers a more expansive plan to align building upgrades with modern curriculum needs.

By addressing these core infrastructure needs now, we stop the drain on our yearly operational budgets and protect the community's educational investments. This bond allows us to move from reactive repairs to proactive excellence.

**A Foundation for the Next 40 Years**

This isn't a short-term patch; it is a strategic roadmap. This proposal is designed to set Laurel High School up for the next 40 years. By modernizing the "bones" of the building and creating flexible, high-tech learning spaces, we are ensuring that LHS can adapt to future technologies and workforce demands that don't even exist yet. We are building a facility that will serve the children and grandchildren of our current residents.

**Key Project "Pathways"**

The \$62.8 million bond is divided into targeted improvements designed to keep students on the right track:

- **CTE Trades & Vocations (\$11.92M)**: Expanded CTE spaces for Family Consumer Science, Industrial Arts and Agricultural Education.
- **Health Sciences (\$13.7M)**: Two new classrooms, storage and a multi-purpose room for physical education and activities with 2 new classrooms.
- **Music & Fine Arts (\$4.8M)**: Upgrades to Band and Choir rehearsal spaces and auditorium repairs with audio and lighting improvements.
- **Safety & Accessibility**: A reconfigured secure front entry and ADA accessibility for our restrooms along with an updated life skills classroom.
- **Deferred Maintenance and Site Improvements (\$16.44M)**: Boiler and heating system replacement, re-roofing, lighting, gym ceiling repair, and classroom maintenance.



Shop Classroom

**Tax Impact at a Glance**

While this is a larger total investment than previous proposals, the individual impact on your property taxes remains limited and focused on long-term value.

**Tax Impact:**

Market Value of your home	Monthly Tax Impact
\$300,000	\$13.96
\$400,000	\$18.60

Please remember that May 5th is voting day. Mail in ballots will go out mid-April. If you have any questions or would like our Superintendent to talk with you or your group please call 406-628-3360 to visit with Mr. Torix or email [matthew\\_torix@laurel.k12.mt.us](mailto:matthew_torix@laurel.k12.mt.us) or check out the Bond information on our website:

<https://www.laurel.k12.mt.us/high-school-bond-information>

Laurel High School was first established in 1908.

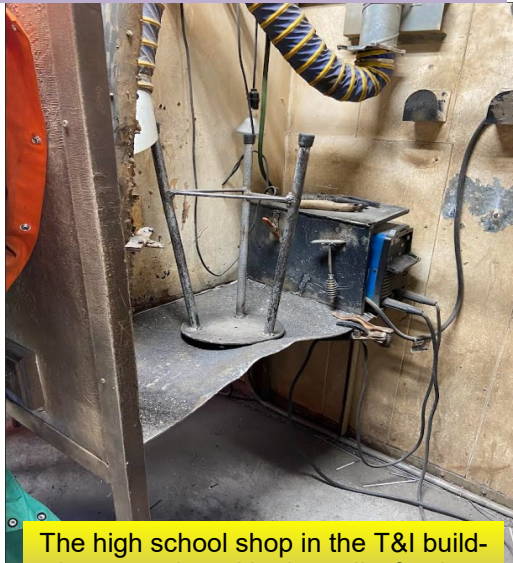
The current high school was built in 1963.

So the building students are using today is **over 60 years old**.

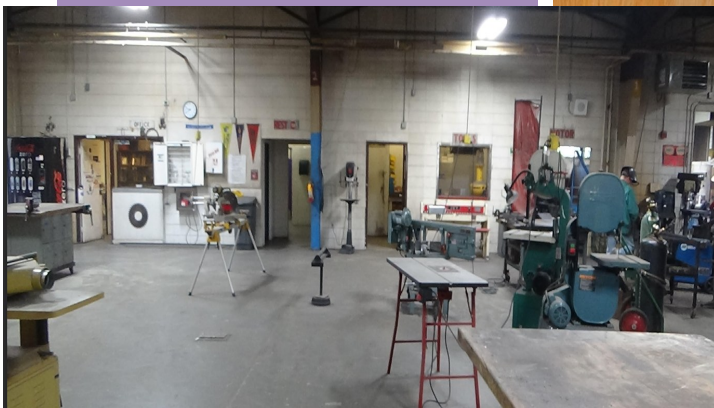


The Laurel High School Auditorium was once a true point of pride for the community—a place where people gathered for some of the most meaningful events in Laurel. It has hosted generations of students and families for Laurelaire performances, musicals, band and choir concerts, plays, award ceremonies, and countless other community events.

Over time, however, the building has begun to show its age. What was once a vibrant and reliable space now requires constant repairs just to remain functional. The ongoing maintenance is no longer occasional—it has become routine, reflecting the reality of an aging facility that is well beyond its prime.



The high school shop in the T&I building struggles with air quality for the students.



#### Layout doesn't match modern education needs

1960s schools were designed for:

- Lecture-style classrooms
- Minimal technology
- Different student population sizes

Today's needs include:

- Career/tech spaces
- Special education services
- Flexible learning environments

#### The building is past its expected life cycle

Schools built in the early 1960s typically had:

- 40–50 year design life for major systems

At 60+ years:

- Systems are well beyond intended lifespan



## Entry Level Driver's Training/ CDL Certification



Do you want a career in bus driving? Call LPS Transportation Department at (406) 628-7630 to obtain more information about individualized programs offered to help you achieve your CDL. Teachers will receive CE credits.

## Beginning Financial Education Class

Instructor: Belinda Holloway

This is a 2-hour class designed to help those struggling with managing personal finances. You will learn:

- How to examine and understand your spending habits
- Categorize and create a manageable personal budget
- Learn about credit and how your credit rating affects your life
- What you can do to improve your credit rating if you have no or bad credit

You will make a plan to achieve your personal financial goal.

**Attendees are asked to bring all their bills and obligations.**

**Date:**

**Laurel Intermediate School, 845 Alder Avenue**

**Min 5, Max 10**

**Cost \$35 per person**

## Home Design Made Simple

Instructor: Jenna Strobel

Ever feel like your house isn't really a home, but you don't know how to fix it? This class will teach practical interior design applications to help you feel confident in making your home your own—your way! You will learn how to see your space like a designer and explore realistic ways to incorporate your personal style, color & lighting, arranging furniture and rooms, organization solutions and decorating tips. You'll also end up with a design board (and a game plan) to confidently make your space actually reflect you.

**Dates:**

**Laurel Intermediate School, 845 Alder Avenue**

**Min 5, Max 10**

**Cost: \$**

## Ashley's Art Class

Instructor: Ashley Campbell

Join us for a fun evening where we will create a cute spring or Easter tree, made by twisting wires together and embellishing it with colored beads. Supplies are provided.

**Date: May 15, 2026, 6 pm to 8 pm**

**Transportation Office, east of high school**

**Min 5 Max 10.**

**Cost: \$45.00 per person**



## Youth "EXPLORERS CLUB—2026"

Allyson Robertus

The Laurel Explores Club is designed to take learning beyond the classroom by giving students the opportunity to experience Montana firsthand. We believe students learn best when they can see, explore, and engage with real places tied to their history and environment. Through these trips, we aim to spark curiosity, build confidence and independence, and create meaningful, hands-on learning experiences that students will remember long after summer ends—all while having fun and discovering the beauty State of Montana.

These trips are designed for youth ages 9-15. Come explore Montana with us!

**June 25—Chief Plenty Coups**-Visit the home of Chief Plenty Coups and step into Montana history. Walk through his cabin, explore the land, and discover how one leader helped guide his people through change. This isn't just history—you'll experience it where it happened.



**July 7—State Capital and Gates of the Mountains**-Start your day at the Montana State Capitol, where laws are made and history is preserved. Then hop on a boat and cruise through the incredible Gates of the Mountains—towering cliffs, wildlife, and views you won't forget.

**July 8—Great Falls**-Get ready to feel the ground shake! The waterfalls in Great Falls are loud, powerful, and impossible to ignore. We'll explore the falls, check out one of the largest freshwater springs in the country, and visit the Lewis and Clark Interpretive Center to see how explorers faced this exact challenge. This trip is all about big sights, big energy, and big fun.



**Leave from:** Laurel High School Parking Lot 6:00 AM return time varies per trip.

**Cost per trip:** \$45 per person

**Includes entry and other fees**

**Bring your lunch, snacks, and money for dinner.**

## Laurel Discovery Tour Summer & Fall 2026.

Guide: Zada Stamper

The Laurel Discovery Tour is designed to provide enriching, guided travel experiences that bring people together through exploration, education, and shared adventure. We believe learning and discovery don't stop with age—they deepen with experience. Our goal is to create meaningful journeys that inspire connection to history, nature, and one another.

Leave the logistics behind and simply enjoy the journey. Whether you're traveling solo, with friends, or as a couple, these tours offer a relaxed, social environment where you can explore new places, learn fascinating stories, and create lasting memories—all while traveling comfortably and safely.

**June 11th—Big Horn Canyon & River Adventure**- Take in the dramatic beauty of Bighorn Canyon with towering cliffs and deep blue waters. This trip includes time on the river, offering a peaceful yet awe-inspiring perspective of one of the region's most underrated natural wonders. **Cost is \$55.00 per person**

**July 12th—Medora & Pitchfork Fondue—North Dakota**- Experience the charm of Medora, nestled in the Badlands, and enjoy the famous Pitchfork Fondue—where steaks are cooked western-style on pitchforks over an open flame. This evening is pure Western culture, complete with stunning views and unforgettable flavors. **Cost is \$100.00 per person and includes transportation, dinner and the show.**

**July 16th—Bighorn Mountains Scenic Drive**- Travel one of the most scenic routes in the region—through the Bighorn Mountains, Shell Canyon, and out through Dayton. Expect breathtaking overlooks, winding mountain roads, and unforgettable photo opportunities.

**July 23rd—Garnet Ghost Town**- Step back in time as you wander one of Montana's best-preserved ghost towns. Garnet offers a glimpse into frontier life, complete with original buildings, artifacts, and stories of those who once called it home.

**August 6th West Yellowstone** Get an up-close look at grizzly bears and wolves while learning about conservation and wildlife behavior. This stop adds depth and understanding to your Yellowstone experience. **Cost is \$55.00 per person**

**August 20th Missoula Butterfly Experience**- Enjoy a peaceful and immersive visit surrounded by free-flying butterflies. This relaxing experience offers a unique connection to nature and a slower pace during your travels.

**October 3rd—Yellowstone National Park** The best place on earth!

**October 24—Richest Hill on Earth Butte** Discover the rich mining history of Butte, once known as "The Richest Hill on Earth." Guided tours bring the past to life through stories of industry, culture, and resilience. **Cost is \$50.00 per person**

**Minimum of 10 Maximum of 35 people required for each trip.** The cost is \$45.00 unless otherwise stated. More information on the Laurel Community Ed website. Any questions please contact Zada at 406-628-7630. Let's go Discover!!

**Laurel School District 7 and  
7-70  
410 Colorado Avenue  
Laurel, MT 59044  
(406) 628-8623**

NONPROFIT  
ORGANIZATION  
U.S. POSTAGE  
PAID  
Laurel, MT  
PERMIT #22

## POSTAL CUSTOMER

Laurel Community Education is thrilled to offer a **Discovery Tour to Washington, D.C.**, October 6–10, 2026, in partnership with Global Travel Alliance. This five-day adult trip provides an unforgettable opportunity to explore the history, leadership, and civic life of our nation's capital.

The all-inclusive land package is \$2,165 per person (double occupancy; flights not included) and includes hotel accommodations, private transportation, daily activities, breakfast, lunch, and dinner while touring, a professional tour director, and 24-hour emergency support.

Highlights include the National Mall, Air Force and Pentagon 9/11 Memorials, Arlington National Cemetery with the Changing of the Guard, Ford's Theatre, the Holocaust Memorial Museum, and the Jefferson, FDR, and MLK Jr. Memorials. Guests will cruise to Mount Vernon, explore Smithsonian museums, and finish with tours of the U.S. Capitol and Library of Congress.



**Registration is still open with limited space available.**

### Registration and Information

Registration: **online only** at [laurel.k12.mt.us/departments/community-education](https://laurel.k12.mt.us/departments/community-education),  
Form More Information call: 406-628-7630.

Payment: check or cash payable to LPS Administration drop off at the Admin office: 606  
S. 5th Street, Laurel, MT. or mail to 300 East Maryland Ave Laurel, MT 59044

\* Classes are offered for **Adults ages 18+** and **Youth Programs ages 10–18.**