



Beaumont Middle School

Welcome to 6th grade!



Beaumont Staff

Principal- Mr. Beall



Assistant Principal-Mrs. Coleman



Assistant Principal- Mr. Wilkins



Beaumont Staff

6th Grade Counselor-

Mrs. Tipton

7th Grade Counselor-

Mrs. Crawford

8th Grade Counselor-

Mrs. Colegrove



Beaumont Staff

Mental Health Specialist- Mrs. Adams



FRYSC- Mrs. Fusilier



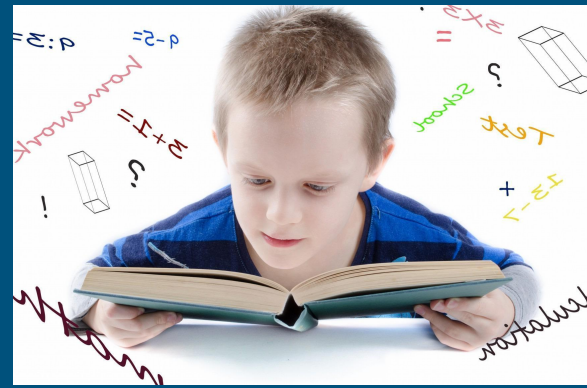
BMS schedule facts

- Students attend 7 classes each day.
 - Academic Enhancement - 1st
 - 4 core classes (math, science, social studies, language arts)
 - 2 elective classes
-

BMS schedule facts

- There are two 6th grade teams-
 - Pegasus
 - Stampede
 - Teams are assigned at random and both teams have all levels of classes.
-

Core Class Scheduling



Students will be placed in core classes using MAP scores from the previous year (5th grade scores).

You will receive a letter about core class placement in June.

Students can take a placement test in math and reading during the summer if they would like to change their placement. Contact Mrs. Tipton to schedule.

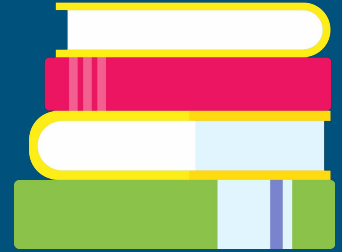
Core Class Scheduling

Math
Math 6
Accelerated Math 6
Accelerated Math 7

Language Arts
Language Arts 6
Advanced Language Arts 6

*Students qualifying for Accelerated Math 7 can take a placement test for Algebra 1.

Elective choices for scheduling

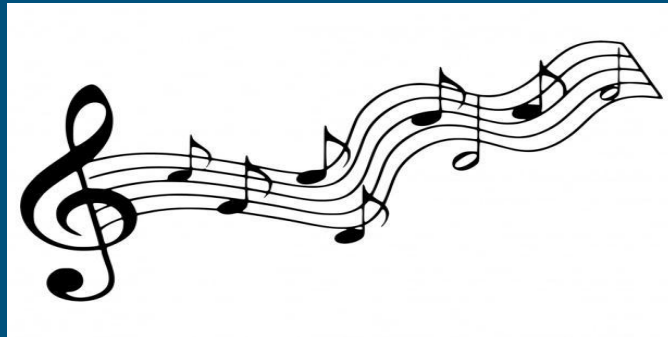


Students can take a year-long elective such as band, chorus, or orchestra.

The year-long electives meet everyday, all year long.

This will fill one elective period each day.

The other elective period will be filled with the elective rotation.



Elective choices for scheduling



The rotating electives vary year to year, but may include classes such as Agriculture, Art, General Music, Introduction to Life Essentials, French, Spanish and Japanese, Physical Education, Health, Technology Education, Computer Applications, and Robotics.

All 6th graders will take an intro to French, Spanish and Japanese during one of these elective slots. This prepares them for which class to take for 7th and 8th grade if they are interested in continuing with a world language class.

Schedule Example A (1 rotating elective and 1 year long elective)

- 1 - Academic Enhancement
 - 2- Math
 - 3- Social Studies
 - 4 - Science
 - 5 - Language Arts
 - 6 - Band
 - 7 - Art
-

Schedule Example B (2 rotating electives)

- 1- Academic Enhancement (AE)
 - 2 - Math
 - 3- Social Studies
 - 4 - Science
 - 5 - Language Arts
 - 6 - PE
 - 7- General Music
-

How does lunch work?

- Students go to lunch with their class on their team.
- Each class has an assigned table in the Cafe.
- Students **MUST** know their lunch number or have their badge on them to scan.

Schedule Card

Return To My Teacher By _____

**BEAUMONT MIDDLE SCHOOL
2025-2026
6th Grade Schedule Card**

Name _____
Last First Middle

PUT A CHECK MARK BY ONE SCHEDULE
6 CLASSES DAILY

_____ **SCHEDULE A**
Language Arts
Math
Science
Social Studies
1 Exploratory classes each semester AND
** Band, Chorus or Orchestra Elective
Choose one:
_____ Band _____
_____ Orchestra _____
_____ Chorus

_____ **SCHEDULE B**
Language Arts
Math
Science
Social Studies
2 Exploratory Classes each semester

****Note:** Band, Chorus and Orchestra are year-long electives. *Please indicate your instrument choice if joining Band or Orchestra.*

I understand that Band, Chorus and Orchestra are year-long commitments, and I will NOT be able to change this class during the year.

Student Signature: _____ Parent Signature _____

High School Credit Core Classes

Math-

Algebra 1

Geometry

Algebra 2 (taken at Dunbar)

Language Arts-

English 1 (8th grade)

High School Credit Elective Classes

7th and 8th Grade (must take both years)-

French 1

Spanish 1

Japanese 1

8th Grade only-

Agriscience

Art 1

Digital Literacy

Engineering 1

Life Skill Essentials

PE

Health

Clubs at Beaumont

Art Club

FCA

Yearbook

Dungeons and Dragons

Junior Beta Club

FCCLA

Jazz Band

Math Team

Club De Espanol

Intramurals

KYA/KUNA

eSports

Chess Federation

G.E.M.S.

Student Council

FFA

GSA

Battle of the Books

Sports at Beaumont

Archery

Boys Basketball

Cheerleading

Cross Country

Dance Team

Girls Basketball

Girls Volleyball

Track and Field

Football

Lacrosse

Lockers

- Your team will assign each student a locker.
- You will practice lockers at Camp Beaumont and during the first weeks of school.
- You do not need a provide a lock.



Fun Things in Middle School!

- Team Incentives/Field Trips
- Dances
- Assemblies
- Color Run
- DanceBlue



Camp Beaumont for Incoming 6th Graders

- August 3 from 9 am - 1 pm for students
- Parent Orientation from 9 - 10 am
- Students will meet and work with their teachers and teams
- Students will also get to meet with our WEB Leaders
- Team building activities, tour the building, etc.

Open House - Tentative Date Monday, August 10



Beaumont Middle School PTSA

Parents, guardians, students, and grandparents are all invited to become members of the BMS PTSA. If you are interested in serving on the BMS PTSA board for the 2025-2026 school year, please email your contact information to the BMS PTSA email address below.



Celebrating Students!



Supporting Staff!



Want to learn more about the BMS PTSA

Visit us at: bmslexky.memberhub.com/

Follow us on Facebook: www.facebook.com/BeaumontMiddleSchoolPTSA

Email us at: bmsptsalex@gmail.com

Beaumont Contact Information

Website - beaumont.fcps.net

School Phone Number - 859-422-0034

Denis Beall, Principal - Denis.Beall@fayette.kyschools.us

Nicki Tipton, School Counselor - nicki.tipton@fayette.kyschools.us



Questions?