



# ENROLLMENT PROJECTIONS REPORT

DALLAS SCHOOL DISTRICT 2



FEBRUARY 25, 2026



Section	Page
<b>Acknowledgments</b> .....	<b>1</b>
<b>Executive Summary</b> .....	<b>2</b>
<b>Enrollment Projection Methodology</b> .....	<b>4</b>
<b>U.S. Census</b> .....	<b>6</b>
<b>General Demographics</b> .....	<b>19</b>
<b>Estimated School-Aged Population Change</b> .....	<b>20</b>
<b>Housing Data</b> .....	<b>22</b>
<b>Resident Live Birth Data</b> .....	<b>25</b>
<b>Survival Ratios</b> .....	<b>27</b>
<b>Historical Enrollment</b> .....	<b>28</b>
<b>Feeder Flowchart</b> .....	<b>29</b>
<b>Other Enrollment</b> .....	<b>30</b>
<b>Projected Enrollment</b> .....	<b>32</b>
<b>Conclusion</b> .....	<b>37</b>



# Acknowledgements

On behalf of Woolpert, we would like to extend our appreciation to the Dallas School District 2 for the opportunity to assist them in developing this Enrollment Projections Report. As a planning team, we hope that this document will serve the Dallas School District 2 for years to come.

## **Woolpert**

Ann Hoffsis, REFP, Vice-President | Management Consulting

Galina Lyogky, Project Coordinator III

Cynthia Casarez, Project Coordinator I

One Easton Oval, Suite 400

Columbus, OH 43219

P. 614.798.8828

[www.woolpert.com](http://www.woolpert.com)

[www.coopstrategies.com](http://www.coopstrategies.com)



# Executive Summary

The district-wide enrollment projections for the Dallas School District 2 included in this report were developed using the cohort survival methodology and Woolpert's custom enrollment projection software, S.T.E.P. [Student Trends & Enrollment Projections]. This custom software was developed in collaboration with The Ohio State University and is based on industry best practices as well as the national experience Woolpert has with schools, school districts, and state agencies.

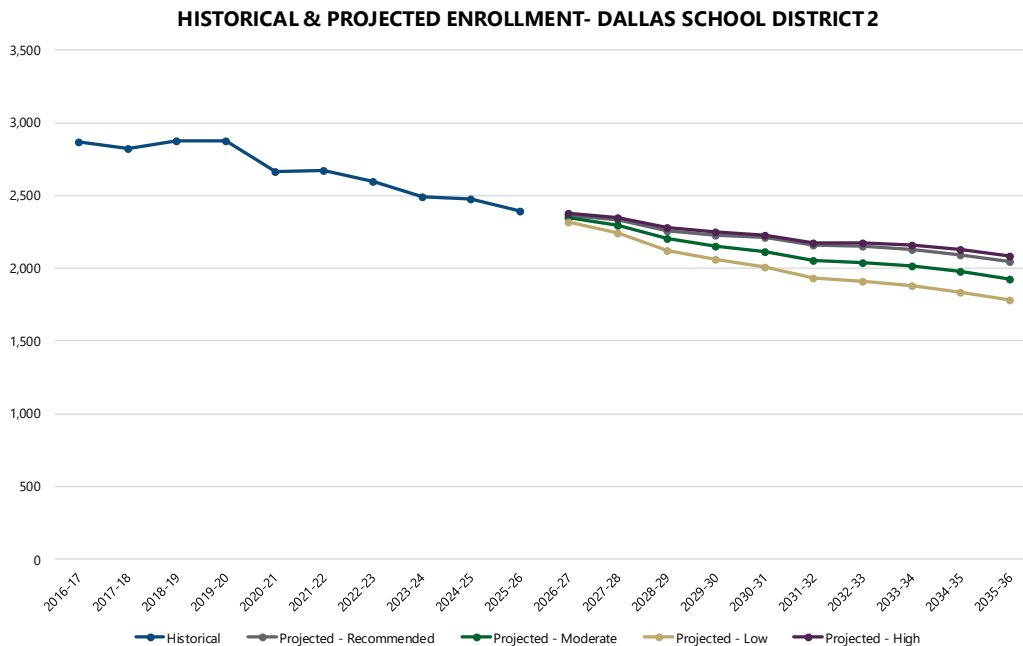


The Dallas School District 2 serves 2,396 students in Lyle, Oakdale Heights, and Whitworth elementaries, LaCreole Middle School, and Dallas High School in the 2025-26 school year.

The projections presented in this report are meant to serve as a planning tool for the future, representing the most likely direction of the District. Enrollment projections were developed using the cohort survival methodology and by analyzing the following data outlined in this report:

- Historical enrollment by grade, by year
- Resident live birth data
- Census data
- Building permits

Enrollment in the Dallas School District 2 has decreased by 476 students from the 2016-17 to the 2025-26 school year. Based on the cohort survival methodology, enrollment is projected to decrease over the next ten years.



As with any projection, the District should pay close attention to the variables associated with determining enrollment projections discussed in this document. Any one or more of these factors can increase or decrease enrollment within the Dallas School District 2. When projecting future enrollments, it is vital to track the number of live births, the amount of new housing activity, and the change in household composition. It is recommended that the data contained in this report should be reviewed on an annual basis to determine how more recent trends and any new housing development will impact the enrollment. In addition, any of the following factors could cause a significant change in projected student enrollment:

- Boundary adjustments
- New school openings
- School closures
- Changes / additions in program offerings
- Preschool programs
- Policy Changes
- Changes in grade configuration
- Interest rates / unemployment shifts
- Intra- and inter-District transfers
- Magnet / charter / private school openings or closures
- Zoning changes
- Annexations
- Unplanned new housing activity
- Planned, but not built, housing
- School voucher programs
- Transportation policy changes
- Pandemics

Obviously, certain factors can be gauged and planned for far better than others. For instance, it may be relatively straightforward to gather housing data from local builders regarding the total number of lots in a planned subdivision and calculate the potential student yield. However, planning for changes in the unemployment rate, and how these may either boost or reduce public school enrollment, proves to be more difficult. In any case, it is essential to gather a wide variety of information in preparation for producing enrollment projections.

When looking ahead at a school district's enrollment over the next two, five, or ten years, it is helpful to approach the process from a global perspective. For example: How many new homes have been constructed each year? How many births have occurred each year in relation to the resident population? Is housing experiencing a turnover—if so, what is the composition of families moving in/out? Are more or less students attending private school or being home-schooled? What has the unemployment rate trend been over the past ten years? What new educational policies are in place that could affect student enrollment figures?

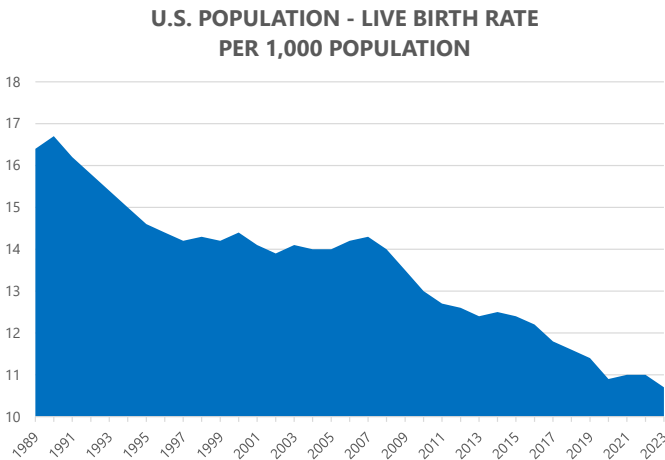
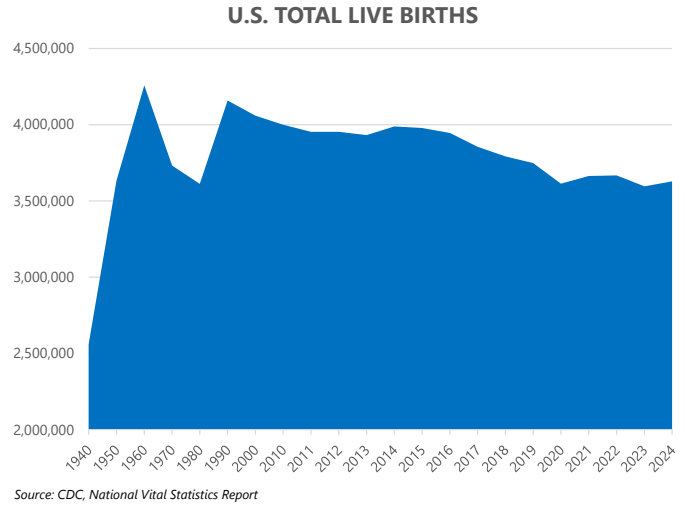
The cohort survival methodology is a standard methodology used throughout the educational planning industry to project enrollment. The enrollment projections developed for the Dallas School District 2 were developed using the cohort survival method.



# Enrollment Projection Methodology

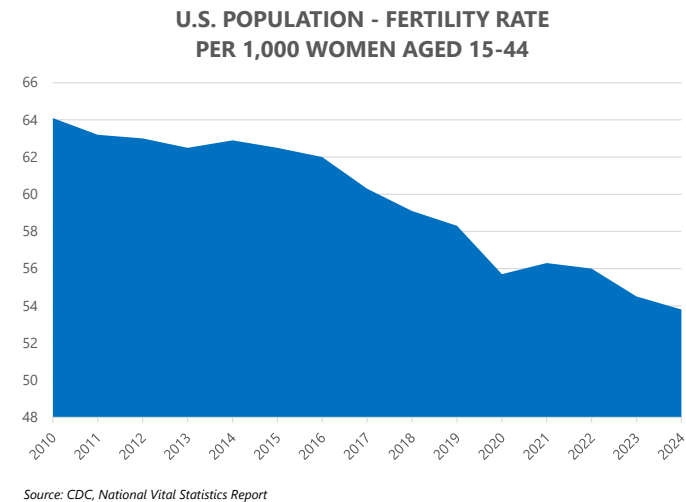
## Introduction

Tracing the landscape of the country’s public school enrollment back over the past fifty years reveals demographic, economic, and social changes. The United States as a whole continues to undergo major shifts in public student enrollment, due in large part to past events including the baby boom, the availability and use of birth control, and the development of suburbs. The baby boom of the late 1940s and 50s was followed by the baby bust of the 1960s and 70s. This gave rise to the echo baby boom of the 1980s.



Nationwide, districts have experienced the effects of the echo baby bust of the 1990s. From the 1950s to the 1970s, a dramatic downsizing of the family unit occurred. A direct result was the declining school enrollment of the 1970s and 1980s. As of the 2023 American Community Survey 1-Year Estimates, the average family size was 3.09 persons. The live birth rate has descended since 2008 and reached an all-time low of 10.7 (per 1,000) in 2023.

Since 2010, the fertility rate among women aged 15-44 dropped from 64.1 to 53.8 (per 1,000) in 2024.



## Cohort Survival Method

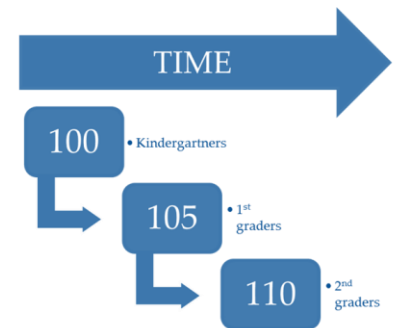
The cohort survival methodology (sometimes referred to as the grade progression ratio method) is a widely used enrollment projection model that is used by many school districts and state and federal agencies to project K-12 enrollment.

A cohort is a group of persons [in this case, students]. The cohort survival enrollment projection methodology uses historic live birth data and historic student enrollment to “age” a known population or cohort throughout the school grades. For instance, a cohort begins when a group of kindergarteners enrolls in grade K and moves to first grade the following year, second grade the next year, and so on.

A “survival ratio” is developed to track how this group of students increased or decreased in number as they moved through the grade levels. By developing survival ratios for each grade transition [i.e. 2nd to 3rd grade] over a ten-year period, patterns emerge. A projection ratio for each grade transition is developed based on analysis of the survival ratios. The projection ratios are used as a multiplier in determining future enrollment.

For example, if student enrollment has consistently increased from the 8th to the 9th grade over the past ten years, the survival ratio would be greater than 100% and could be multiplied by the current 8th grade enrollment to develop a projection for next year’s 9th grade. This methodology can be carried through to develop ten years of projection figures. Because there is not a grade cohort to follow for students coming into kindergarten, resident live birth counts are used to develop a birth-to-kindergarten survival ratio. Babies born five years previous to the kindergarten class are compared in number, and a ratio can be developed to project future kindergarten enrollments.

The cohort survival method is useful in areas where population is stable [relatively flat, growing steadily, or declining steadily], and where there have been no significant fluctuations in enrollment, births, and housing patterns from year to year. The cohort survival methodology inherently considers the net effects of factors such as migration, housing, dropouts, transfers to and from charter schools, open enrollment, and deaths. This methodology does not assume changes in policies, program offerings, or future changes in housing and migration patterns.



# U.S. Census

This section presents data from the United States Census Bureau and estimates from the American Community Survey (ACS) to demonstrate the demographic characteristics and historic trends of the population within the District boundary. While the Census is conducted every 10 years, the American Community Survey collects social, housing, educational, occupational, financial, and other demographic data from over 3.5 million households throughout the nation monthly and is compiled yearly, as mandated by the U.S. Constitution. This data helps public officials, federal/ state/local agencies, school districts, etc. assess historic trends and plan for the future.

Data is provided by school district boundary, county boundary, Census county subdivision boundary, and Census place boundary. The Census Bureau defines county subdivisions as “the primary divisions of a county,” and can be called towns, townships, districts, or other names. If a township or other entity crosses a county boundary, data is provided for each segment of the locality in each county. Census places can include cities, towns, boroughs, villages, and other less common entities. Census places can and do cross county and county subdivision boundaries.

According to the U.S. Census Bureau, Oregon is a state where minor civil divisions (such as townships, commissioner districts, towns, etc.) are not legally established, so Census County Divisions (CCDs) are formed and used by the Census Bureau to aggregate Census data. While CCDs are not used in legal or governmental functions, they dissolve counties into smaller sections for statistical purposes by following geographical or man-made features (such as mountain ranges, rivers, roads, etc.) and are named after local places or settlements that help identify their location.

The Dallas School District 2 is located in Polk County, Oregon. It serves parts or all of the following localities:

## **Census County Subdivisions**

- Dallas CCD
- Falls City CCD
- Monmouth-Indendence CCD
- Salem CCD
- Willamina CCD

## **Census Places**

- Dallas City
- Falls City
- Rickreall CDP\*

*\*Census Designated Place*



The data on the following pages is aggregated and color-coordinated by the boundaries shown in the map on the following page.

It should be noted that the District does not necessarily serve whole localities but data presented by locality is for the whole locality.

Data for municipalities symbolized with hash marks is not excluded from the municipalities symbolized with solid colors.





# Population

According to the 2020 Census, since the 2010 Census, the total population and median age increased in the District boundary.

Based on the 2020 Census, since the 2010 Census, the number of children under the age of 5 has increased by 2 percent, the number of children ages 5 - 19 has increased by 2 percent, the number of adults ages 20 - 64 has increased by 6 percent, and the number of adults ages 65 and over has increased by 50 percent in the District boundary.

The 2000, 2010, and 2020 population counts are shown in the table below.

Population		Under 5 years	5 to 19 years	20 to 64 years	65 years and over	Total Population	Median Age
Dallas School District 2 Boundary	2000**	-	-	-	-	-	-
	2010	1,199	4,172	11,194	3,811	20,376	42.20
	2020	1,221	4,249	11,880	5,733	23,083	44.40
	Trend	↗	↗	↗	↗	↗	↗
Polk County	2000	4,086	13,938	35,176	9,180	62,380	36.50
	2010	4,887	16,329	43,035	11,152	75,403	37.10
	2020	4,761	17,809	47,879	16,984	87,433	38.60
	Trend	↘	↗	↗	↗	↗	↗
<b>County Subdivisions</b>							
Dallas CCD	2000	1,162	4,045	9,604	2,963	17,774	38.50
	2010	1,219	4,131	11,019	3,776	20,145	41.90
	2020	1,197	4,242	11,687	5,655	22,781	44.20
	Trend	↘	↗	↗	↗	↗	↗
Falls City CCD	2000	151	678	1,559	353	2,741	40.40
	2010	125	545	1,621	452	2,743	46.20
	2020	150	553	1,633	664	3,000	45.50
	Trend	↘	↘	↘	↗	↗	↘
Monmouth-Independence CCD	2000	1,187	4,026	9,690	1,519	16,422	26.70
	2010	1,439	4,894	12,113	2,098	20,544	27.30
	2020	1,457	5,187	13,586	3,352	23,582	30.50
	Trend	↗	↗	↗	↗	↗	↗
Salem CCD	2000	1,376	4,501	12,579	3,998	22,454	40.60
	2010	1,875	6,153	16,342	4,367	28,737	39.30
	2020	1,779	7,081	18,908	6,694	34,462	40.00
	Trend	↘	↗	↗	↗	↗	↘
Willamina CCD	2000	210	688	1,744	347	2,989	37.70
	2010	229	606	1,940	459	3,234	42.50
	2020	178	746	2,065	619	3,608	41.50
	Trend	↘	↗	↗	↗	↗	↘
<b>Places</b>							
Dallas City	2000	959	2,729	6,473	2,266	12,427	36.30
	2010	966	3,046	7,827	2,744	14,583	39.80
	2020	925	3,092	8,643	4,194	16,854	43.10
	Trend	↘	↗	↗	↗	↗	↗
Falls City	2000	74	250	470	122	916	37.50
	2010	56	184	553	154	947	43.50
	2020	52	196	604	199	1,051	43.60
	Trend	↘	↘	↗	↗	↗	↘
Rickreall CDP	2000	0	7	61	8	76	**
	2010	4	23	38	12	77	36.50
	2020	2	13	60	1	76	38.50
	Trend	↘	↘	↗	↘	↘	↘

Source: U.S. Census (\*\*data not available)

Note: CDP = Census Designated Place

Note: CCD = Census County Subdivision



## Race / Ethnicity & Language

The table below shows race and ethnic distribution throughout the Dallas School District 2 boundary and the localities that are served by the District.

Race & Ethnicity		White alone	Black or African American alone	American Indian and Alaska Native alone	Asian alone	Native Hawaiian and Other Pacific Islander alone	Some other race alone	Two or more races	Total Population	Hispanic Population
Dallas School District 2 Boundary	2000**	-	-	-	-	-	-	-	-	-
	2010	92.81%	0.21%	1.87%	0.83%	0.13%	1.49%	2.66%	20,376	5.47%
	2020	85.83%	0.37%	1.88%	1.02%	0.10%	2.46%	8.34%	23,083	7.28%
Polk County	2000	89.32%	0.31%	1.61%	1.24%	0.23%	4.50%	2.79%	62,380	8.78%
	2010	85.95%	0.56%	2.14%	1.90%	0.28%	5.36%	3.80%	75,403	12.05%
	2020	78.09%	0.84%	2.19%	2.03%	0.41%	5.79%	10.66%	87,433	14.56%
<b>County Subdivisions</b>										
Dallas CCD	2000	93.47%	0.20%	1.06%	0.37%	0.43%	1.65%	2.82%	17,774	3.95%
	2010	92.87%	0.21%	1.88%	0.79%	0.12%	1.55%	2.58%	20,145	5.65%
	2020	85.85%	0.36%	1.91%	1.05%	0.11%	2.43%	8.30%	22,781	7.29%
Falls City CCD	2000	92.16%	0.33%	1.57%	0.29%	0.00%	1.09%	4.56%	2,741	2.92%
	2010	92.34%	0.22%	2.11%	0.44%	0.07%	1.39%	3.43%	2,743	4.19%
	2020	86.47%	0.30%	1.97%	0.53%	0.07%	1.30%	9.37%	3,000	4.67%
Monmouth-Independence CCD	2000	81.87%	0.36%	1.55%	1.53%	0.29%	10.87%	3.54%	16,422	17.23%
	2010	79.48%	0.74%	1.57%	2.16%	0.37%	11.66%	4.01%	20,544	22.12%
	2020	71.63%	0.88%	1.42%	1.72%	0.56%	11.36%	12.43%	23,582	24.65%
Salem CCD	2000	92.04%	0.39%	0.87%	1.86%	0.08%	3.00%	1.76%	22,454	8.00%
	2010	86.56%	0.73%	1.16%	2.82%	0.34%	4.30%	4.09%	28,737	10.87%
	2020	77.58%	1.21%	1.30%	3.17%	0.57%	4.95%	11.21%	34,462	14.05%
Willamina CCD	2000	82.54%	0.03%	10.81%	1.00%	0.00%	0.90%	4.72%	2,989	2.44%
	2010	73.10%	0.43%	16.20%	0.28%	0.28%	1.82%	7.88%	3,234	5.07%
	2020	69.12%	0.50%	17.66%	0.53%	0.17%	2.33%	9.70%	3,608	7.59%
<b>Places</b>										
Dallas City	2000	93.70%	0.29%	1.09%	0.23%	0.62%	2.10%	1.98%	12,427	4.02%
	2010	92.55%	0.23%	2.04%	0.76%	0.13%	1.61%	2.68%	14,583	5.95%
	2020	85.11%	0.42%	2.10%	1.12%	0.11%	2.70%	8.45%	16,854	7.94%
Falls City	2000	88.32%	0.98%	2.95%	0.33%	0.00%	2.18%	5.24%	916	3.82%
	2010	91.55%	0.11%	2.32%	0.42%	0.11%	1.80%	3.70%	947	5.17%
	2020	85.73%	0.10%	2.47%	0.48%	0.10%	0.57%	10.56%	1,051	4.47%
Rickreall CDP	2000	100.00%	0.00%	0.00%	0.00%	0.00%	0.00%	0.00%	76	0.00%
	2010	93.51%	0.00%	3.90%	0.00%	0.00%	0.00%	2.60%	77	2.60%
	2020	90.79%	0.00%	1.32%	0.00%	1.32%	0.00%	6.58%	76	2.63%

Source: U.S. Census (\*\*data not available)

Note: CDP = Census Designated Place

Note: CCD = Census County Subdivision



According to the 2023 ACS estimates, most of the population in the District boundary speaks only English. The table below shows the languages spoken at home.

Languages Spoken at Home (2023 Estimates)	Dallas School District 2 Boundary	Polk County	County Subdivisions					Places		
			Dallas CCD	Falls City CCD	Monmouth- Independence CCD	Salem CCD	Williamina CCD	Dallas City	Falls City	Rickreall CDP*
Population 5 years and over	22,202	83,881	21,621	3,440	22,764	33,050	3,006	16,174	1,176	-
Speak only English	94.39%	88.70%	94.28%	97.53%	81.54%	88.22%	97.94%	94.39%	95.92%	-
Speak a language other than English	5.61%	11.30%	5.72%	2.47%	18.46%	11.78%	2.06%	5.61%	4.08%	-
Spanish	994	7,072	1,019	25	3,733	2,259	36	753	25	-
5 - 17 years old	248	1,802	248	1	1,190	363	0	233	1	-
18 - 64 years old	568	4,791	593	24	2,305	1,835	34	418	24	-
65 years old and over	178	479	178	0	238	61	2	102	0	-
Other Indo-European languages	130	1,092	131	10	244	707	0	86	10	-
5 - 17 years old	24	161	24	0	32	105	0	12	0	-
18 - 64 years old	61	634	62	10	167	395	0	37	10	-
65 years old and over	45	297	45	0	45	207	0	37	0	-
Asian and Pacific Island languages	106	1,050	69	50	195	736	0	69	13	-
5 - 17 years old	0	203	0	0	0	203	0	0	0	-
18 - 64 years old	90	697	53	46	168	430	0	53	9	-
65 years old and over	16	150	16	4	27	103	0	16	4	-
Other languages	16	267	18	0	31	192	26	0	0	-
5 - 17 years old	0	121	0	0	15	97	9	0	0	-
18 - 64 years old	16	142	16	0	16	93	17	0	0	-
65 years old and over	0	4	2	0	0	2	0	0	0	-

Source: American Community Survey 5-Year Estimates (2023)

\*Data not available

Note: CDP = Census Designated Place

Note: CCD = Census County Subdivision



## Households, Families, & Housing

According to the 2023 ACS estimates, approximately 72% of the homes in the Dallas School District 2 boundary are single-unit structures while 18% of the homes are 2-or-more-unit structures. Nearly 27% of the District boundary's households have at least one school-aged (or younger) child in them.

Households (2023 Estimates)	Dallas School District 2 Boundary	Polk County	County Subdivisions					Places		
			Dallas CCD	Falls City CCD	Monmouth- Independence CCD	Salem CCD	Williamina CCD	Dallas City	Falls City	Rickreall CDP*
Total Households	8,996	32,574	8,808	1,219	7,521	13,887	1,139	6,717	433	-
1-unit structures	72.30%	71.90%	73.30%	74.30%	65.20%	75.40%	61.50%	69.30%	71.80%	-
2-or-more-unit structures	18.40%	21.90%	18.80%	0.60%	28.50%	22.60%	15.60%	24.40%	0.70%	-
Mobile homes and all other types	9.30%	6.20%	8.00%	25.10%	6.30%	2.00%	22.90%	6.30%	17.50%	-
Owner occupied:	72.40%	64.60%	71.10%	86.60%	55.70%	64.10%	55.10%	65.80%	74.10%	-
Renter occupied:	27.60%	35.40%	28.90%	13.40%	44.30%	35.90%	44.90%	34.20%	25.90%	-
Households with one or more people under 18 years	27.20%	31.50%	27.30%	30.10%	33.50%	33.20%	32.90%	27.40%	36.50%	-

Source: American Community Survey 5-Year Estimates (2023)

\*Data not available

Note: CDP = Census Designated Place

Note: CCD = Census County Subdivision



According to the U.S. Census Bureau, “A family is a group of two people or more (one of whom is the householder) related by birth, marriage, or adoption and residing together.”

A household consists of all persons (related and unrelated) living within a housing unit.

A housing unit is a single room, house, apartment, or other group of residential rooms that have direct outside access; group quarters are excluded.

According to the 2023 ACS Estimates, the average family size and average household size are estimated to have increased in the District boundary since the 2010 Census.

From the 2010 Census to the 2020 Census, the number of total and occupied housing units in the District boundary has increased while the number of vacant units has decreased.

The tables on the following page show family/household size and housing occupancy in the District boundary.



Family/Household Size		Average Family Size	Average Household Size
Dallas School District 2 Boundary	2000**	-	-
	2010	2.97	2.54
	2023*	3.01	2.55
	Trend	↗	↗
Polk County	2000	3.07	2.62
	2010	3.06	2.60
	2023*	3.13	2.66
	Trend	↘	↘
County Subdivisions			
Dallas CCD	2000	3.03	2.63
	2010	2.97	2.53
	2023*	3.03	2.54
	Trend	↘	↘
Falls City CCD	2000	3.12	2.78
	2010	2.96	2.61
	2023*	3.02	2.91
	Trend	↘	↘
Monmouth-Independence CCD	2000	3.20	2.73
	2010	3.22	2.73
	2023*	3.56	3.00
	Trend	↗	↗
Salem CCD	2000	3.00	2.50
	2010	3.04	2.56
	2023*	2.97	2.51
	Trend	↘	↘
Willamina CCD	2000	3.17	2.74
	2010	3.04	2.63
	2023*	3.30	2.79
	Trend	↘	↘
Places			
Dallas City	2000	3.02	2.57
	2010	2.98	2.49
	2023*	3.01	2.50
	Trend	↘	↘
Falls City	2000	3.25	2.86
	2010	2.98	2.59
	2023*	3.15	2.82
	Trend	↘	↘
Rickreall CDP^	2000**	-	-
	2010	3.10	2.85
	2023**	-	-
	Trend	-	-

Source: U.S. Census (2020 Census data not available)

\*Source: American Community Survey 5-Year Estimates (2023)

\*\*data not available

Note: CDP = Census Designated Place

Note: CCD = Census County Subdivision

Housing Occupancy		Total housing units	Occupied housing units	Vacant housing units
Dallas School District 2 Boundary	2000**	-	-	-
	2010	8,418	7,902	516
	2020	9,250	8,891	359
	Trend	↗	↗	↘
Polk County	2000	24,461	23,058	1,403
	2010	30,302	28,288	2,014
	2020	33,828	32,135	1,693
	Trend	↗	↗	↘
County Subdivisions				
Dallas CCD	2000	6,921	6,588	333
	2010	8,325	7,820	505
	2020	9,132	8,770	362
	Trend	↗	↗	↘
Falls City CCD	2000	1,053	987	66
	2010	1,134	1,046	88
	2020	1,160	1,092	68
	Trend	↗	↗	↘
Monmouth-Independence CCD	2000	6,007	5,651	356
	2010	7,587	7,023	564
	2020	8,436	7,944	492
	Trend	↗	↗	↘
Salem CCD	2000	9,260	8,746	514
	2010	11,888	11,169	719
	2020	13,638	12,976	662
	Trend	↗	↗	↘
Willamina CCD	2000	1,220	1,086	134
	2010	1,368	1,230	138
	2020	1,462	1,353	109
	Trend	↗	↗	↘
Places				
Dallas City	2000	4,906	4,653	253
	2010	6,137	5,747	390
	2020	6,890	6,648	242
	Trend	↗	↗	↘
Falls City	2000	360	331	29
	2010	395	366	29
	2020	416	392	24
	Trend	↗	↗	↘
Rickreall CDP	2000	32	32	**
	2010	27	27	**
	2020	29	29	**
	Trend	↘	↘	-

Source: U.S. Census

\*\*data not available

Note: CDP = Census Designated Place

Note: CCD = Census County Subdivision



## Industry & Occupation

The table below illustrates the types of industry and occupation categories in the Dallas School District 2 boundary and the localities it serves. 2023 estimates are calculated for the civilian employed population 16 years and over.

Industry & Occupation Categories for the Civilian Employed Population 16 Years and Over, (2023 Estimates)	Dallas School District 2 Boundary	Polk County	Dallas CCD	Falls City CCD	Monmouth-Independence CCD	Salem CCD	Willamina CCD	Dallas City	Falls City	Rickreall CDP*
Total population	23,391	88,553	22,820	3,558	24,029	34,966	3,180	17,214	1,222	-
Civilian employed population, 16 years and over	10,457	40,523	10,314	1,447	12,139	15,478	1,145	7,453	450	-
<b>Industry Categories</b>										
Agriculture, forestry, fishing and hunting, and mining	1.56%	3.45%	2.76%	5.18%	4.70%	2.95%	0.87%	1.10%	2.44%	-
Construction	9.43%	7.00%	8.95%	20.39%	5.33%	5.89%	5.33%	8.09%	27.78%	-
Manufacturing	8.21%	7.59%	8.27%	5.18%	6.53%	8.03%	9.61%	7.67%	10.22%	-
Wholesale trade	1.57%	1.06%	1.34%	2.35%	1.01%	0.87%	0.00%	1.40%	0.00%	-
Retail trade	13.75%	13.26%	13.32%	14.58%	15.46%	11.65%	9.34%	15.27%	10.44%	-
Transportation and warehousing, and utilities	3.96%	3.56%	4.44%	2.90%	3.84%	2.87%	2.97%	4.31%	6.67%	-
Information	0.68%	1.10%	0.73%	0.69%	0.92%	1.59%	0.26%	0.95%	1.11%	-
Finance and insurance, and real estate and rental and leasing	4.57%	5.24%	4.29%	3.39%	3.46%	7.71%	1.57%	4.80%	0.67%	-
Professional, scientific, and management, and administrative and waste management services	8.45%	9.20%	8.22%	10.64%	7.90%	10.86%	7.42%	7.43%	7.78%	-
Educational services, and health care and social assistance	27.72%	26.51%	27.54%	24.05%	30.05%	24.31%	12.58%	26.43%	27.78%	-
Arts, entertainment, and recreation, and accommodation and food services	7.14%	8.14%	7.34%	1.17%	9.42%	7.52%	18.95%	9.07%	3.78%	-
Other services, except public administration	4.58%	4.33%	4.32%	4.08%	4.37%	4.37%	3.67%	4.52%	0.00%	-
Public administration	8.37%	9.57%	8.48%	5.39%	7.00%	11.39%	27.42%	8.95%	1.33%	-
<b>Occupation Categories</b>										
Management, business, science, and arts occupations	35.50%	38.80%	36.15%	33.59%	31.67%	47.73%	23.93%	32.97%	24.00%	-
Service occupations	24.61%	21.93%	25.00%	12.85%	24.70%	17.25%	39.83%	25.44%	11.11%	-
Sales and office occupations	14.99%	19.15%	13.91%	19.63%	22.27%	20.30%	17.29%	15.05%	19.33%	-
Natural resources, construction, and maintenance occupations	9.02%	8.48%	9.74%	21.01%	8.20%	6.45%	11.79%	9.62%	30.00%	-
Production, transportation, and material moving occupations	15.88%	11.63%	15.19%	12.92%	13.16%	8.27%	7.16%	16.92%	15.56%	-

Source: American Community Survey 5-Year Estimates (2023)

\*Data not available

Note: CDP = Census Designated Place

Note: CCD = Census County Subdivision



## Financial Status

According to the U.S. Census Bureau, earnings come from a job (salary/wages) while income also includes payments such as “Social Security, pensions, child support, public assistance, annuities, money derived from rental properties, interest and dividends.” The table below shows income, earnings, poverty status, and unemployment rate in the ACS 2023 estimates.

Financial Status (2023 Estimates)	Dallas School District 2 Boundary	Polk County	Dallas CCD	Falls City CCD	Monmouth- Independence CCD	Salem CCD	Willamina CCD	Dallas City	Falls City	Rickreall CDP*
<b>Earnings</b>										
Population 16 years and over with earnings	11,776	45,588	11,624	1,736	13,660	17,262	1,306	8,398	593	-
Full-time, year-round workers with earnings	7,379	27,405	7,176	1,029	7,137	11,263	800	4,958	347	-
\$1 to \$9,999 or less	1.88%	1.21%	1.39%	4.76%	0.64%	1.14%	1.13%	1.13%	0.58%	-
\$10,000 to \$14,999	4.68%	2.56%	4.61%	3.30%	1.61%	1.87%	1.38%	6.11%	8.65%	-
\$15,000 to \$24,999	4.26%	3.94%	4.42%	6.22%	6.36%	1.81%	5.13%	4.72%	5.76%	-
\$25,000 to \$34,999	13.05%	11.06%	13.78%	6.71%	14.31%	7.76%	9.63%	12.12%	6.92%	-
\$35,000 to \$49,999	21.91%	20.98%	21.66%	20.89%	25.80%	16.56%	34.25%	19.50%	29.11%	-
\$50,000 to \$64,999	16.60%	16.48%	16.00%	22.55%	19.46%	14.13%	19.50%	19.06%	25.36%	-
\$65,000 to \$74,999	8.92%	9.22%	8.14%	15.65%	8.03%	9.95%	11.13%	8.25%	1.73%	-
\$75,000 to \$99,999	10.26%	13.14%	11.02%	9.23%	10.35%	17.16%	5.50%	10.81%	15.56%	-
\$100,000 or more	18.44%	21.40%	18.98%	10.69%	13.44%	29.62%	12.38%	18.29%	6.34%	-
Mean Earnings for full-time, year-round workers	\$69,295	\$75,029	\$70,308	\$57,253	\$61,539	\$89,324	\$59,333	\$71,500	\$53,430	-
<b>Household Income</b>										
Total Households	8,996	32,574	8,808	1,219	7,521	13,887	1,139	6,717	433	-
Less than \$10,000	5.10%	4.70%	5.30%	4.70%	4.40%	4.40%	6.80%	6.40%	12.20%	-
\$10,000 to \$14,999	5.30%	5.10%	5.60%	4.40%	5.90%	4.20%	6.80%	6.90%	11.10%	-
\$15,000 to \$24,999	5.50%	5.40%	5.90%	2.20%	6.80%	4.30%	8.70%	5.90%	5.50%	-
\$25,000 to \$34,999	4.80%	5.40%	5.40%	3.70%	6.50%	4.90%	5.10%	5.40%	3.70%	-
\$35,000 to \$49,999	12.50%	10.30%	12.10%	14.40%	10.00%	8.40%	16.20%	13.40%	16.60%	-
\$50,000 to \$74,999	17.70%	15.20%	17.60%	14.80%	14.20%	13.90%	20.70%	18.00%	15.90%	-
\$75,000 to \$99,999	10.60%	13.30%	10.10%	19.70%	16.70%	13.30%	9.60%	10.50%	10.90%	-
\$100,000 to \$149,999	19.60%	18.90%	18.70%	25.30%	20.60%	17.90%	12.60%	16.70%	15.50%	-
\$150,000 to \$199,999	11.10%	11.20%	11.00%	7.30%	7.40%	13.70%	10.70%	10.50%	7.40%	-
\$200,000 or more	7.70%	10.50%	8.30%	3.50%	7.50%	14.80%	2.70%	6.20%	1.20%	-
Median income (dollars)	\$73,408	\$81,318	\$72,257	\$84,728	\$77,613	\$91,547	\$52,180	\$65,647	\$51,094	-
<b>Poverty Status</b>										
% below poverty level	13.40%	12.20%	14.10%	8.30%	14.10%	10.00%	14.90%	16.90%	19.80%	-
Under 18 years	17.20%	13.20%	17.20%	8.00%	15.50%	9.80%	12.20%	19.80%	17.00%	-
18 to 64 years	12.70%	11.60%	13.10%	9.70%	13.80%	9.00%	15.50%	16.00%	20.80%	-
65 years and over	11.90%	13.00%	14.10%	5.30%	12.70%	13.10%	17.20%	16.60%	18.90%	-
<b>Unemployment Rate</b>										
Population 20 to 64 years	3.60%	4.60%	3.60%	5.40%	3.80%	5.50%	8.00%	3.90%	12.10%	-

Source: American Community Survey 5-Year Estimates (2023)

\*Data not available

Note: CDP = Census Designated Place

Note: CCD = Census County Subdivision



## Computer/Internet Access

The table below shows the presence of a computer and/or internet subscription in households in the localities served by the District, according to the 2023 ACS estimates. Percentages shown are based on total households.

% of Total Households with Internet/Computers (2023 Estimates)	Dallas School District 2 Boundary	Polk County	County Subdivisions	Dallas CCD	Falls City CCD	Monmouth-Independence CCD	Salem CCD	Willamina CCD	Places	Dallas City	Falls City	Rickreall CDP*
Has a Computer	93.84%	95.87%		93.24%	96.47%	95.98%	97.73%	92.10%		93.09%	90.99%	-
Has an Internet subscription	85.76%	90.21%		86.50%	82.36%	90.40%	93.76%	82.79%		85.31%	87.76%	-
Has no Internet Subscription	8.08%	5.66%		6.74%	14.11%	5.58%	3.97%	9.31%		7.79%	3.23%	-
Has no Computer	6.16%	4.13%		6.76%	3.53%	4.02%	2.27%	7.90%		6.91%	9.01%	-

Source: American Community Survey 5-Year Estimates (2023)

\*Data not available

Note: CDP = Census Designated Place

Note: CCD = Census County Subdivision



## School Enrollment

The tables below summarize the percentage of the population living within the Dallas School District 2 boundary, by age group, enrolled in school; enrolled in school and attending public school; and enrolled in school and attending private school, based on U.S. Census American Community Survey (ACS) 5-Year Estimates. Home-schooled children are counted in the private school data; the ACS does not distinguish between charter and non-charter schools. If anyone in these age groups had not attended any school in the 3 months before the survey was conducted, they were considered to not be enrolled in any school.

It should be noted that this data is not a survey of the students attending schools in the District; rather, it is based on monthly surveys sent out by the ACS to households in the District boundary. This survey data is then used to create the estimates shown in the tables below.

**DALLAS SCHOOL DISTRICT 2 BOUNDARY**  
**% OF AGE GROUP ENROLLED IN SCHOOL**

Age Group	2015	2016	2017	2018	2019	2020	2021	2022	2023	Trend
3-4	18.6%	14.8%	9.6%	11.7%	32.8%	39.1%	41.7%	47.1%	54.7%	
5-9	91.3%	91.5%	95.3%	94.6%	94.3%	85.0%	89.0%	88.2%	86.4%	
10-14	98.1%	97.8%	96.6%	96.7%	97.6%	98.0%	98.2%	93.2%	92.8%	
15-17	96.6%	97.5%	97.4%	95.2%	96.6%	96.9%	96.3%	94.8%	96.9%	
18-19	57.9%	54.5%	64.5%	76.8%	74.9%	75.0%	69.9%	67.5%	54.4%	

Source: U.S. Census American Community Survey 5-Year Estimates 2015, 2016, 2017, 2018, 2019, 2020, 2021, 2022, 2023

**DALLAS SCHOOL DISTRICT 2 BOUNDARY**  
**% OF AGE GROUP ENROLLED IN SCHOOL ATTENDING PUBLIC SCHOOL**

Age Group	2015	2016	2017	2018	2019	2020	2021	2022	2023	Trend
3-4	28.8%	11.9%	69.8%	56.6%	63.4%	75.4%	73.9%	59.2%	70.2%	
5-9	91.5%	89.3%	87.9%	85.3%	85.7%	76.3%	68.2%	70.8%	65.2%	
10-14	96.1%	96.8%	88.4%	87.3%	84.1%	83.2%	84.3%	81.8%	86.9%	
15-17	97.1%	97.0%	93.9%	88.3%	78.0%	72.1%	75.0%	72.4%	79.9%	
18-19	100.0%	100.0%	100.0%	100.0%	100.0%	100.0%	100.0%	100.0%	100.0%	

Source: U.S. Census American Community Survey 5-Year Estimates 2015, 2016, 2017, 2018, 2019, 2020, 2021, 2022, 2023

**DALLAS SCHOOL DISTRICT 2 BOUNDARY**  
**% OF AGE GROUP ENROLLED IN SCHOOL ATTENDING PRIVATE SCHOOL**

Age Group	2015	2016	2017	2018	2019	2020	2021	2022	2023	Trend
3-4	71.2%	88.1%	30.2%	43.4%	36.6%	24.6%	26.1%	40.8%	29.8%	
5-9	8.5%	10.7%	12.1%	14.7%	14.3%	23.7%	31.8%	29.2%	34.8%	
10-14	3.9%	3.2%	11.6%	12.7%	15.9%	16.8%	15.7%	18.2%	13.1%	
15-17	2.9%	3.0%	6.1%	11.7%	22.0%	27.9%	25.0%	27.6%	20.1%	
18-19	0.0%	0.0%	0.0%	0.0%	0.0%	0.0%	0.0%	0.0%	0.0%	

Source: U.S. Census American Community Survey 5-Year Estimates 2015, 2016, 2017, 2018, 2019, 2020, 2021, 2022, 2023



# General Demographics

The following information represents population estimates, by block group, created by the Environmental Systems Research Institute (ESRI) from public and private data sources, the U.S. Census Bureau, and the U.S. Census Bureau’s American Community Survey (ACS). ESRI provides a yearly update to their demographic data, showing an estimate of the current population and population 5 years in the future.

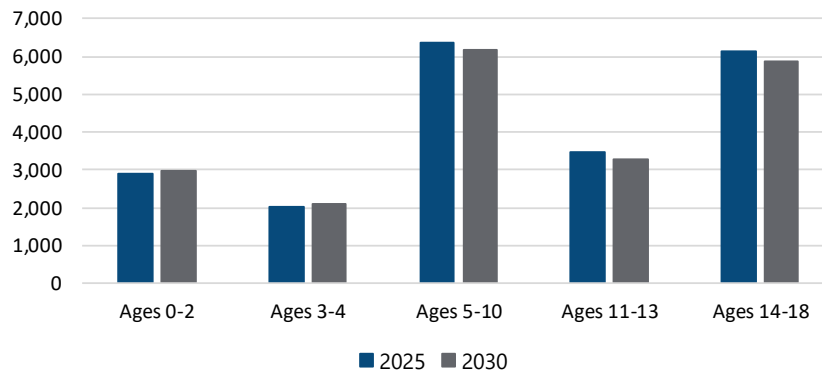
According to the ESRI estimates, the total population of Polk County is estimated to increase over the next five years. As illustrated in the table below, the number of children, ages 5-18, is estimated to decrease by 643 children, or approximately 4 percent.

## POLK COUNTY POPULATION ESTIMATES

Age Group	2025	2030	Change	% Change
Ages 0-2	2,880	2,972	92	3.19%
Ages 3-4	2,036	2,080	44	2.16%
Ages 5-10	6,361	6,179	-182	-2.86%
Ages 11-13	3,472	3,296	-176	-5.07%
Ages 14-18	6,147	5,862	-285	-4.64%
<b>Ages 5-18</b>	<b>15,980</b>	<b>15,337</b>	<b>-643</b>	<b>-4.02%</b>
<b>Total Population</b>	<b>92,428</b>	<b>95,841</b>	<b>3,413</b>	<b>3.69%</b>

Source: ESRI BIS

## POLK COUNTY POPULATION ESTIMATES



# Dallas School District 2 Boundary

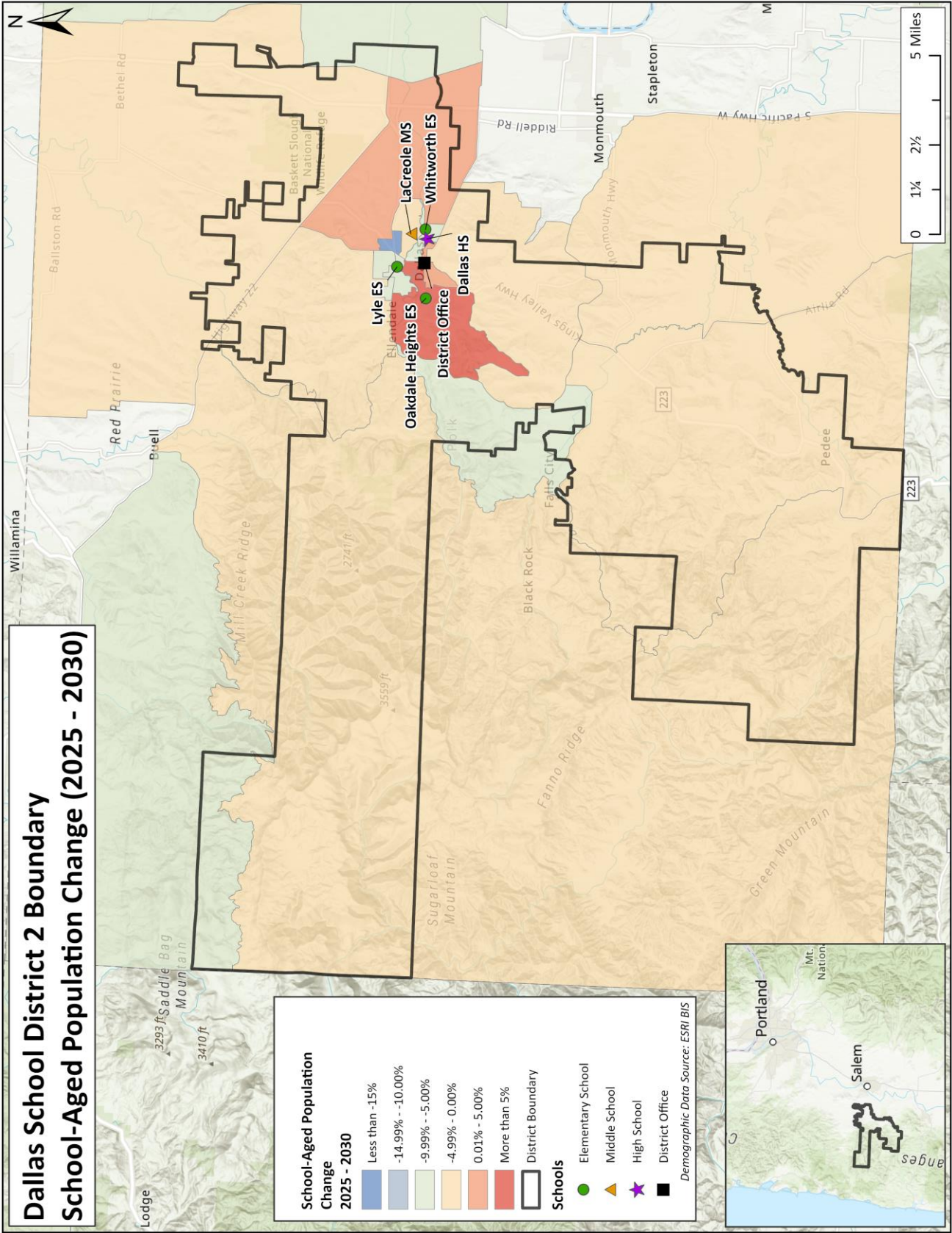
## Estimated School-Aged Population Change 2025-2030

The map on the following page shows school-aged population change in the U.S. Census block groups within / around the Dallas School District 2 boundary. Population changes are based on 2025 and 2030 estimates.

A block group is defined by the U.S. Census Bureau as, “a statistical district of a census tract, generally defined to contain between 600 and 3,000 people and 240 and 1,200 housing units, and the smallest geographic unit for which the Census Bureau tabulates sample data.”



# Dallas School District 2 Boundary School-Aged Population Change (2025 - 2030)



# Housing Data

Housing development and building permits are tracked to determine their effect on student enrollment. The table and graph below illustrate the number of single - and multi-family building permits issued in Polk County, Dallas and Falls City since 2000.

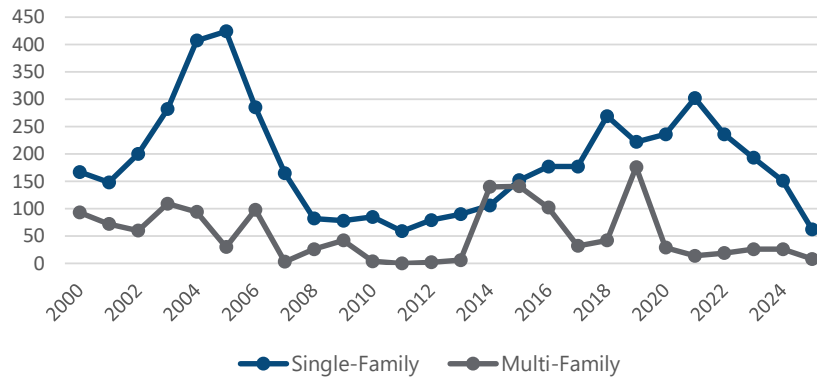
## BUILDING PERMITS

Year	POLK COUNTY		DALLAS		FALLS CITY
	Single-Family	Multi-Family	Single-Family	Multi-Family	Single-Family
2000	167	93	41	6	0
2001	148	72	56	16	0
2002	200	60	68	42	0
2003	282	109	70	11	0
2004	407	94	149	2	0
2005	424	30	171	8	0
2006	285	98	135	82	0
2007	165	3	71	3	0
2008	82	26	33	21	0
2009	78	42	12	42	0
2010	85	4	24	4	0
2011	59	0	13	0	0
2012	79	2	23	2	0
2013	90	6	56	6	0
2014	106	140	41	0	0
2015	152	141	72	69	0
2016	177	102	91	12	0
2017	177	32	109	2	0
2018	269	42	144	0	0
2019	222	176	117	2	0
2020	236	29	131	0	0
2021	302	14	140	12	0
2022	236	19	125	8	0
2023	193	26	117	16	0
2024	151	26	98	6	0
2025*	62	8	23	4	14

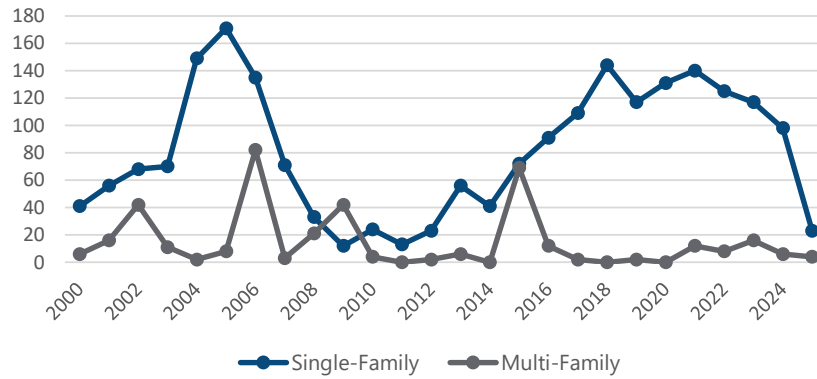
Source: SOCDs Building Permits Database ( \*preliminary through August 2025)



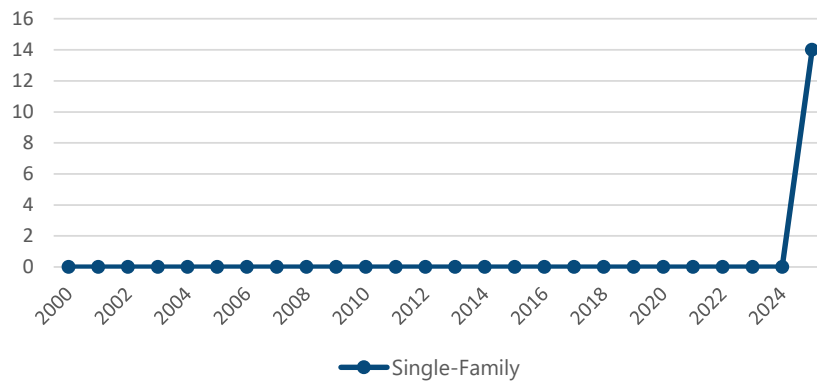
### POLK COUNTY BUILDING PERMITS



### DALLAS BUILDING PERMITS



### FALLS CITY BUILDING PERMITS



The following tables show approved and proposed multi-family developments and active subdivisions in the city of Dallas as of May of 2025, according to the data provided by the Dallas School District 2.

**Approved and Proposed Multi-Family Developments\***

Development	Units	Floors	Developer	Status
Multi-Family	204	3	Tokola	Approved/Proposed
Multi-Family	66	3	Prisim	Approved/Proposed
Multi-Family	44	5	7-Star	Approved/Proposed
Multi-Family	12	3	Laskeside	Approved/Proposed
Multi-Family	16	3	Skyline	Approved/Proposed
Multi-Family	42	4	Polk CDC	Approved/Proposed
Multi-Family	20	3	Polk CDC	Approved/Proposed
Multi-Family	34	2	Polk CDC	Approved/Proposed
Multi-Family	66	3	FIFE	Approved/Proposed
Multi-Family	240	3	FIFE	Approved/Proposed
Multi-Family	16	3	FIFE	Approved/Proposed
<b>Total Units</b>	<b>760</b>			

Source: Dallas School District 2 (\*As of May 2025)

**Active Dallas Subdivisions\***

Development	Units	Status
Highland Gleanns 2	59	Residential Construction
Forest Ridge Phase 5	33	Residential Construction
Ridge View	29	Residential Construction
Creedside 3	11	Residential Construction
Forest Ridge Phase 6a	23	Infrastructure Construction
Highland Gleanns 3	53	Infrastructure Construction
Gleanns at Barberry 12	20	Infrastructure Construction
Ellendale Meadows 1	28	Infrastructure Construction
River Wild	12	Planning Approved
Ellendale Meadows 2	48	Planning Approved
Oakdale Estates Phase 4-7	43	Planning Approved
JENRAE/Crystal Estates	26	Planning Approved
<b>Total Units</b>	<b>385</b>	

Source: Dallas School District 2 (\*As of May 2025)



# Resident Live Birth Data

Utilization of resident live birth data is recommended when projecting future kindergarten enrollments. This data provides a helpful overall trend. Large bubbles in birth counts, either up or down, can also be planned for or anticipated by the District.

In addition, the live birth counts are used in determining a birth-to-kindergarten and birth-to-first grade survival ratio. This ratio identifies the percentage of children born in a representative area who attend kindergarten and first grade in the District five and six years later. The survival ratios for birth-to-kindergarten, birth-to-first grade, as well as grades 1 -12 can be found on page 26 of this report.

Data is arranged by the residence of the mother. For example, if a mother lives in Dallas but delivers her baby in Portland, the birth is counted in Dallas. Live birth counts are different from live birth rates. The live birth count is simply the actual number of live births. A birth rate is the number of births per 1,000 women in a specified population group.

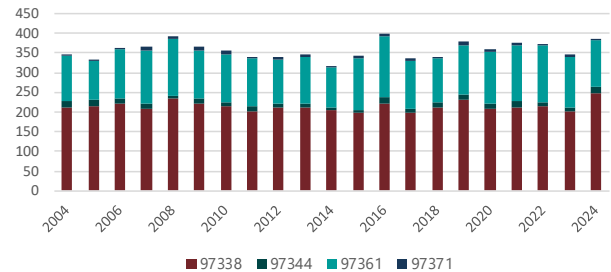
The table and graph include the resident live birth counts for ZIP codes 97338, 97344, 97347, 97351, 97361, 97370, 97371, 97378, and 97396. Upon analysis of the map on the following page, only live birth counts for ZIP codes 97338, 97344, 97361, and 97371 were used in the development of the enrollment projections.

**DALLAS SCHOOL DISTRICT 2 ZIP CODES  
RESIDENT LIVE BIRTH COUNTS**

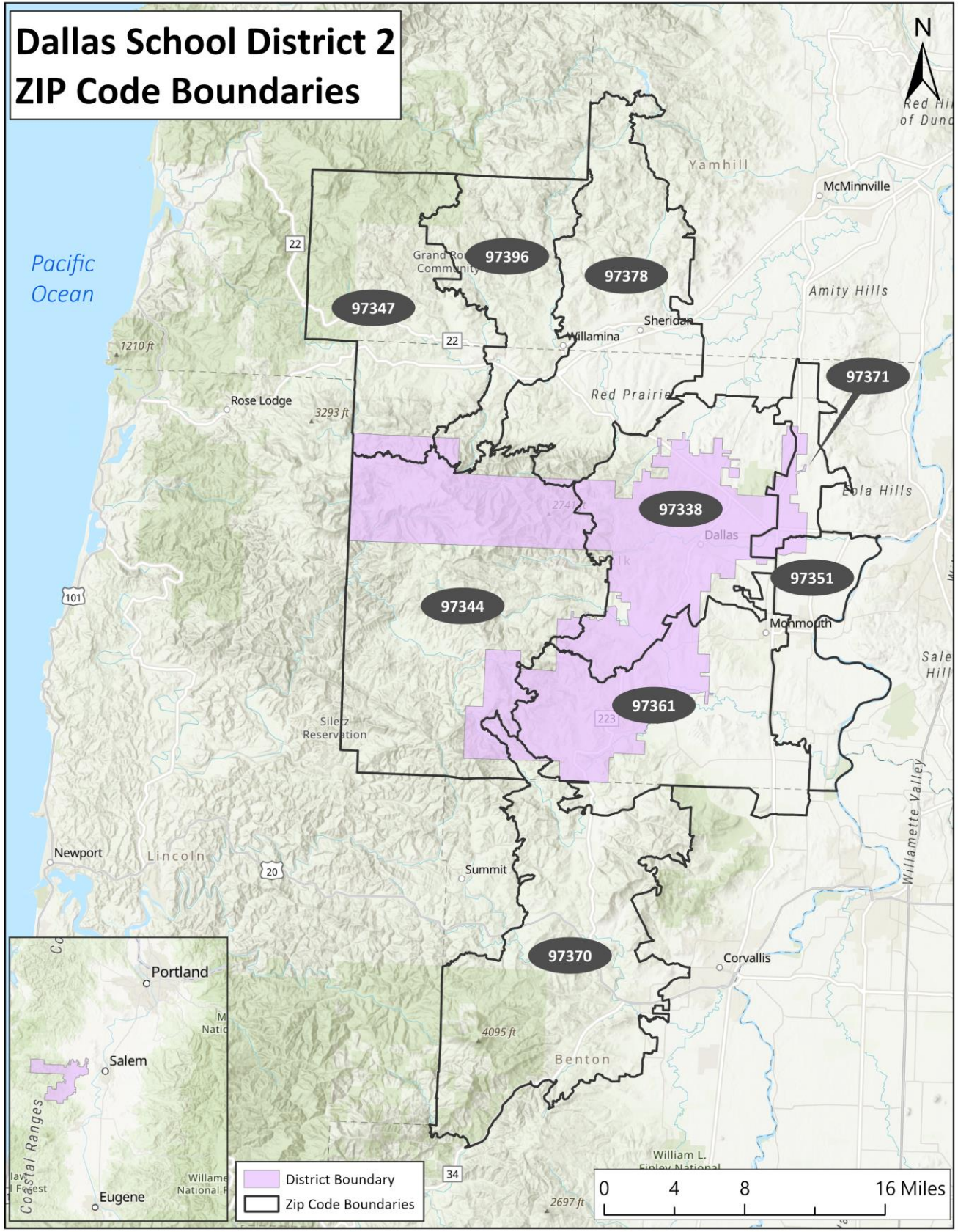
Year	97338	97344	97347	97351	97361	97370	97371	97378	97396
2004	212	17	16	156	113	0	5	9	18
2005	215	15	16	171	99	0	4	5	10
2006	222	14	19	152	122	0	2	2	1
2007	208	12	28	178	137	0	8	2	2
2008	233	9	15	160	144	0	7	8	12
2009	222	12	28	166	123	0	10	6	17
2010	215	11	10	161	120	0	9	7	15
2011	203	11	16	173	123	0	3	7	14
2012	213	7	21	159	113	1	7	9	10
2013	212	10	13	143	117	0	8	7	17
2014	204	9	24	161	100	0	4	6	19
2015	197	8	12	147	130	0	7	12	17
2016	222	15	17	162	155	0	6	7	14
2017	199	9	20	134	121	2	6	10	19
2018	212	12	20	139	113	2	4	14	10
2019	230	16	14	157	125	1	9	8	15
2020	208	13	8	135	133	0	6	6	9
2021	213	16	12	165	142	0	4	5	11
2022	214	12	12	137	142	2	6	14	14
2023	203	7	12	128	131	0	4	9	25
2024	248	15	15	137	118	1	6	10	12

Source: Oregon Health Authority

**DALLAS SCHOOL DISTRICT 2 ZIP CODES  
RESIDENT LIVE BIRTH COUNTS**



# Dallas School District 2 ZIP Code Boundaries



# Survival Ratios

The chart below demonstrates the ten-year changes, by grade level, in enrollment as students move through the system. Percentages greater than 100 indicate that there are more students than there were in the previous grade the previous year. In other words, there was an increase in student population where new students were added to the system. Percentages less than 100 indicate that there was decline or students left the system. If the exact number of students in 1st grade during the 2017-18 school year were present in 2nd grade for the 2018 -19 school year, the survival ratio would be 100 percent.

**Birth-to-Kindergarten and Birth-to-First Grade:** This ratio indicates the number of children born in the area who attend kindergarten and first grade in the district five and six years later. What is important to note is the trend in survival ratios, not necessarily the actual number.

**Grades 8 to 9:** The higher than usual percentage may be a result of school district promotion policies. Often in school districts, students are promoted from 8th to 9th grade and after one year in 9th grade do not have sufficient credits to be classified as a 10th grader and are counted again as 9th graders the following year. There may also be students who are attending private or charter schools or are home schooled through grade 8 and then attend public schools for high school education.

The COVID-19 pandemic introduced an unforeseen level of volatility, nationwide, as seen in the survival ratios for the 2019 -20 to 2020-21 and 2020-21 to 2021-22 school years. These ratios will need to be monitored closely over the next few years as new trends are established.

Survival Ratios - District-wide

from	to	Birth to K	K to 1	Birth to 1	1 to 2	2 to 3	3 to 4	4 to 5	5 to 6	6 to 7	7 to 8	8 to 9	9 to 10	10 to 11	11 to 12
2016-17	2017-18	56.85%	105.11%	53.94%	102.65%	101.06%	98.61%	97.84%	98.24%	99.51%	95.67%	100.93%	102.07%	115.70%	79.43%
2017-18	2018-19	58.69%	104.10%	59.18%	102.70%	105.67%	106.28%	104.23%	105.75%	101.79%	107.35%	106.33%	99.08%	115.38%	81.79%
2018-19	2019-20	54.06%	105.83%	62.11%	96.55%	103.68%	105.85%	103.45%	97.30%	101.67%	103.52%	106.85%	94.89%	132.41%	80.70%
2019-20	2020-21	38.66%	94.80%	51.25%	87.61%	90.82%	86.29%	93.55%	94.29%	91.20%	95.06%	108.51%	99.57%	127.80%	80.07%
2020-21	2021-22	40.60%	115.04%	44.48%	101.22%	98.43%	95.51%	100.59%	100.99%	94.44%	93.91%	107.36%	95.29%	124.89%	82.46%
2021-22	2022-23	49.11%	117.90%	47.87%	109.15%	103.01%	109.04%	106.47%	104.09%	99.51%	102.67%	108.65%	91.53%	116.87%	78.35%
2022-23	2023-24	40.76%	110.91%	54.46%	96.86%	94.61%	95.32%	97.56%	100.00%	97.75%	101.47%	103.65%	105.47%	103.96%	88.38%
2023-24	2024-25	35.26%	112.95%	46.04%	97.27%	97.30%	103.80%	99.39%	104.50%	97.79%	100.57%	117.39%	112.56%	105.19%	105.51%
2024-25	2025-26	36.64%	110.45%	38.95%	91.72%	103.93%	100.00%	100.61%	100.00%	93.78%	93.79%	119.43%	100.00%	102.68%	105.38%
mean simple all years		45.63%	108.56%	50.92%	98.41%	99.83%	100.08%	100.41%	100.57%	97.50%	99.34%	108.79%	100.05%	116.10%	86.90%
std. dev. simple all years		9.12%	6.95%	7.36%	6.40%	4.93%	7.09%	3.93%	3.73%	3.66%	4.89%	5.99%	6.25%	10.77%	10.90%
mean simple 5 years		40.47%	113.45%	46.36%	99.24%	99.46%	100.73%	100.92%	101.92%	96.66%	98.48%	111.29%	100.97%	110.72%	92.02%
std. dev. simple 5 years		5.40%	3.08%	5.62%	6.49%	3.93%	5.82%	3.34%	2.22%	2.44%	4.30%	6.79%	8.32%	9.74%	12.77%
mean simple 3 years		37.55%	111.44%	46.48%	95.28%	98.61%	99.71%	99.19%	101.50%	96.44%	98.61%	113.49%	106.01%	103.94%	99.76%
std. dev. simple 3 years		2.86%	1.33%	7.77%	3.09%	4.80%	4.25%	1.53%	2.60%	2.30%	4.20%	8.58%	6.30%	1.26%	9.85%
mean simple 2 years		35.95%	111.70%	42.49%	94.49%	100.61%	101.90%	100.00%	102.25%	95.78%	97.18%	118.41%	106.28%	103.93%	105.44%
std. dev. simple 2 years		0.97%	1.77%	5.02%	3.92%	4.69%	2.69%	0.86%	3.18%	2.84%	4.80%	1.44%	8.88%	1.77%	0.09%
mean weighted all years		40.10%	111.02%	46.36%	96.66%	99.87%	100.40%	100.27%	101.23%	96.35%	98.16%	112.97%	102.22%	109.31%	95.23%
std. dev. weighted all years		6.46%	5.06%	6.94%	5.94%	4.45%	5.61%	3.08%	2.91%	2.88%	4.26%	6.79%	7.11%	9.65%	12.22%
mean weighted 5 years		37.60%	111.69%	43.29%	95.01%	100.91%	100.80%	100.26%	101.41%	95.63%	96.96%	116.06%	103.26%	104.88%	101.20%
std. dev. weighted 5 years		3.69%	2.18%	5.96%	5.00%	4.10%	3.69%	2.04%	2.28%	2.37%	4.08%	6.16%	6.89%	5.22%	9.57%
mean weighted 3 years		36.56%	110.91%	40.80%	92.90%	102.40%	100.48%	100.28%	100.79%	94.64%	95.28%	118.45%	102.42%	103.17%	104.74%
std. dev. weighted 3 years		1.22%	1.16%	4.72%	2.75%	3.63%	2.18%	0.88%	2.10%	2.01%	3.50%	3.79%	5.88%	1.18%	4.05%
mean weighted 2 years		36.57%	110.57%	39.29%	91.98%	103.62%	100.18%	100.55%	100.21%	93.97%	94.11%	119.33%	100.60%	102.80%	105.39%
std. dev. weighted 2 years		0.41%	0.75%	2.14%	1.67%	2.00%	1.14%	0.37%	1.36%	1.21%	2.04%	0.61%	3.78%	0.76%	0.04%



# Dallas School District 2

## Historical Enrollment

As indicated in the table below, over the past ten years, student enrollment in the Dallas School District 2 has decreased by 476 students.

### Historical Enrollment - District-wide

Grade	2016-17	2017-18	2018-19	2019-20	2020-21	2021-22	2022-23	2023-24	2024-25	2025-26
K	176	195	206	173	133	162	165	139	134	133
1	189	185	203	218	164	153	191	183	157	148
2	189	194	190	196	191	166	167	185	178	144
3	216	191	205	197	178	188	171	158	180	185
4	231	213	203	217	170	170	205	163	164	180
5	227	226	222	210	203	171	181	200	162	165
6	205	223	239	216	198	205	178	181	209	162
7	231	204	227	243	197	187	204	174	177	196
8	216	221	219	235	231	185	192	207	175	166
9	242	218	235	234	255	248	201	199	243	209
10	242	247	216	223	233	243	227	212	224	243
11	282	280	285	286	285	291	284	236	223	230
12	226	224	229	230	229	235	228	251	249	235
Dallas Virtual Academy	0	0	0	0	0	69	0	0	0	0
<b>K - 12 Total</b>	<b>2,872</b>	<b>2,821</b>	<b>2,879</b>	<b>2,878</b>	<b>2,667</b>	<b>2,604</b>	<b>2,594</b>	<b>2,488</b>	<b>2,475</b>	<b>2,396</b>
<b>Grand Total</b>	<b>2,872</b>	<b>2,821</b>	<b>2,879</b>	<b>2,878</b>	<b>2,667</b>	<b>2,673</b>	<b>2,594</b>	<b>2,488</b>	<b>2,475</b>	<b>2,396</b>

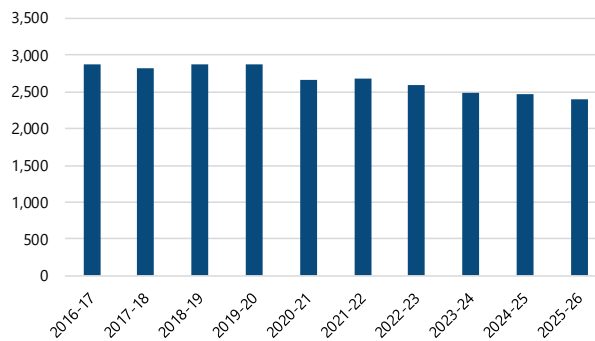
Source: Dallas School District 2 Enrollment Data, October 1st Count

### Historical Enrollment - District-wide

Grade	2016-17	2017-18	2018-19	2019-20	2020-21	2021-22	2022-23	2023-24	2024-25	2025-26
K - 3	770	765	804	784	666	669	694	665	649	610
4 - 5	458	439	425	427	373	341	386	363	326	345
6 - 8	652	648	685	694	626	577	574	562	561	524
9 - 12	992	969	965	973	1,002	1,017	940	898	939	917
13	0	0	0	0	0	69	0	0	0	0
<b>K - 12 Total</b>	<b>2,872</b>	<b>2,821</b>	<b>2,879</b>	<b>2,878</b>	<b>2,667</b>	<b>2,604</b>	<b>2,594</b>	<b>2,488</b>	<b>2,475</b>	<b>2,396</b>
<b>Grand Total</b>	<b>2,872</b>	<b>2,821</b>	<b>2,879</b>	<b>2,878</b>	<b>2,667</b>	<b>2,673</b>	<b>2,594</b>	<b>2,488</b>	<b>2,475</b>	<b>2,396</b>

Source: Dallas School District 2 Enrollment Data, October 1st Count

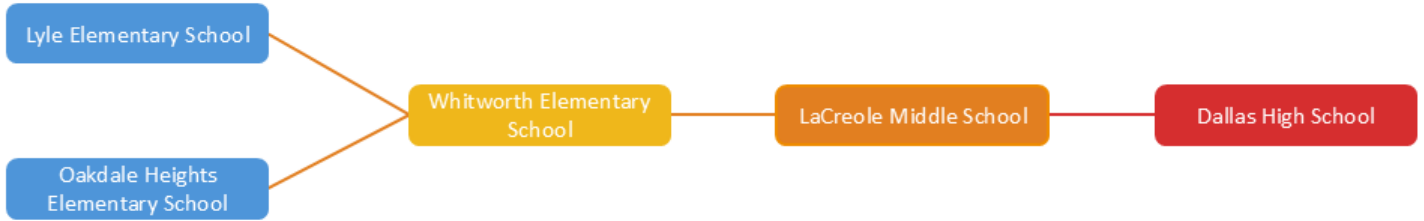
### HISTORICAL ENROLLMENT - DISTRICT-WIDE



The varying shades of color in the table represent statistically significant cohort sizes. The darker blue represents smaller cohorts, while the darker red represents larger cohorts, comparatively.



# Feeder Flowchart



# Other Enrollment

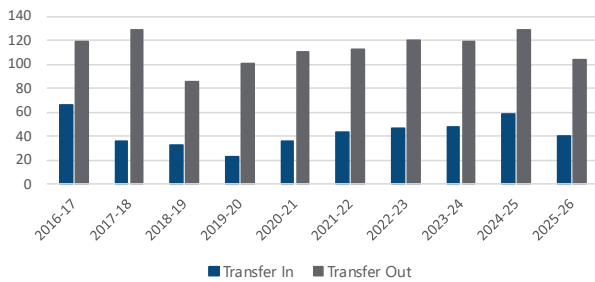
The tables and graphs below and on the following page show transfers-in and transfers-out, charter school enrollment, outgoing to online charter enrollment, homeschool enrollment, and private school in district boundaries enrollment in the District, according to data provided by the Dallas School District 2. At the time of this report, the District did not have detailed yearly data for private schools in the District boundaries for the ten-year span of time.

## Transfers In/Out

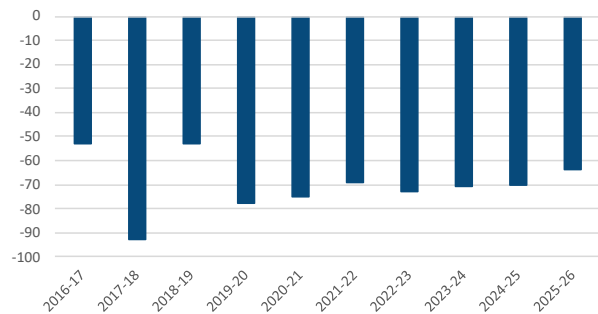
	2016-17	2017-18	2018-19	2019-20	2020-21	2021-22	2022-23	2023-24	2024-25	2025-26
Transfer In	66	36	33	23	36	44	47	48	59	40
Transfer Out	119	129	86	101	111	113	120	119	129	104
+/- Students	-53	-93	-53	-78	-75	-69	-73	-71	-70	-64

Source: Dallas School District 2

DALLAS SCHOOL DISTRICT 2  
TRANSFERS IN/OUT



DALLAS SCHOOL DISTRICT2 +/- STUDENTS

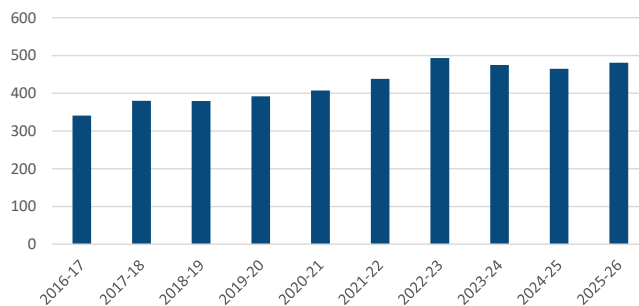


## Charter Schools

	2016-17	2017-18	2018-19	2019-20	2020-21	2021-22	2022-23	2023-24	2024-25	2025-26
DCS Charter School	154	193	193	200	211	210	265	250	253	267
LVCS Charter	187	187	186	192	196	228	228	225	212	214
Total	341	380	379	392	407	438	493	475	465	481

Source: Dallas School District 2

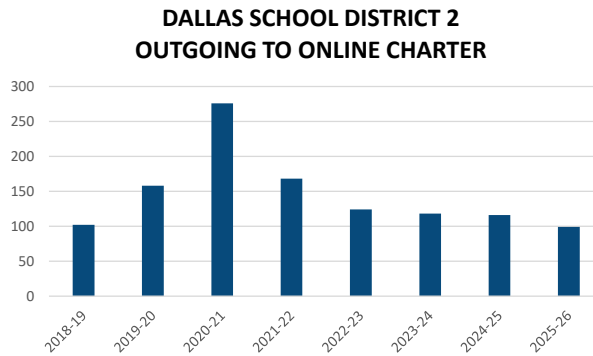
DALLAS SCHOOL DISTRICT 2  
CHARTER SCHOOLS



**Outgoing to Online Charter**

	2018-19	2019-20	2020-21	2021-22	2022-23	2023-24	2024-25	2025-26
<b>Grand Total</b>	102	158	276	168	124	118	116	99

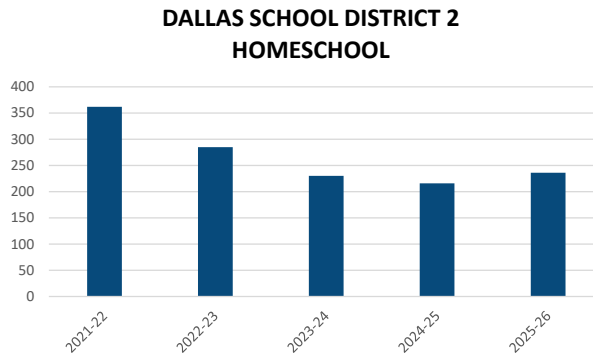
Source: Dallas School District 2



**Homeschool**

	2021-22	2022-23	2023-24	2024-25	2025-26
<b>Grand Total</b>	362	285	230	216	236

Source: Dallas School District 2



**Private School in District Boundaries\***

	2021-22	2022-23	2023-24	2024-25	2025-26
<b>Grand Total</b>	235	235	235	235	235

Source: Dallas School District 2

**Private School in District Boundaries:**

- Grace Christian Preschool and Kindergarten has about 30 Kindergarteners annually.
- Faith Christian School has about 200-205 students in grades K-8 annually.
- Hundred Acre Academy has declined to share their information.



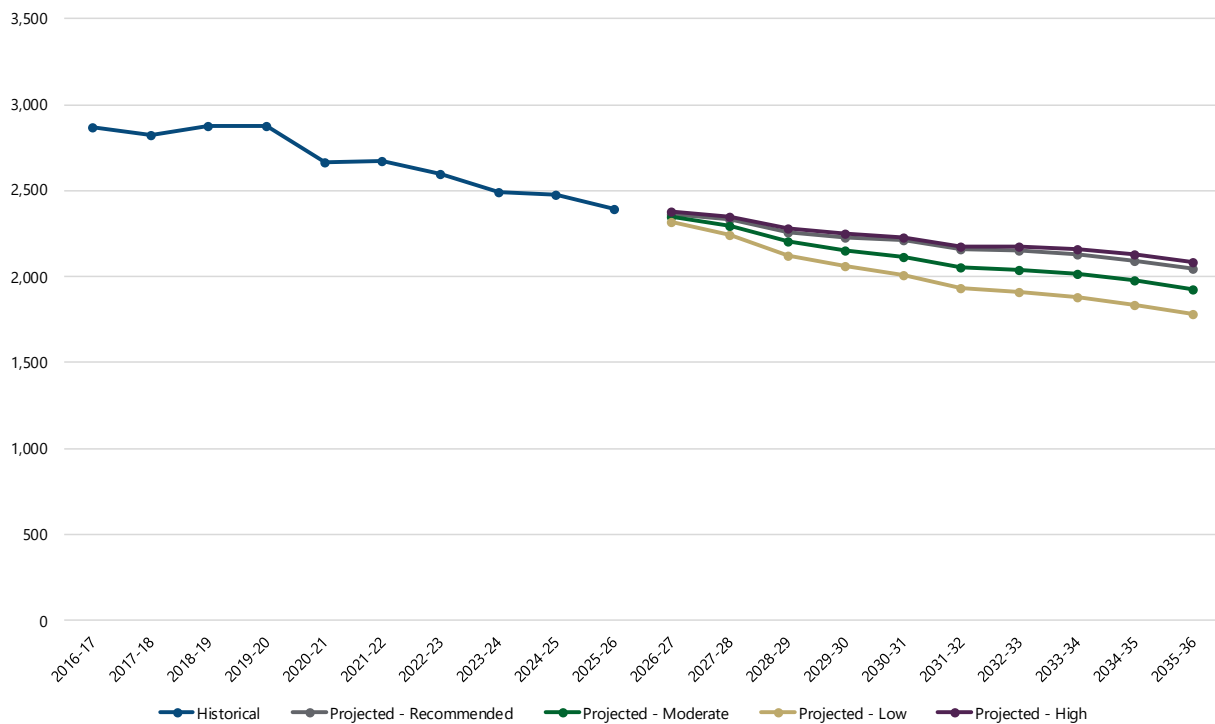
# Projected Enrollment

Woolpert developed low, moderate, high, and recommended enrollment projections for the Dallas School District 2. The moderate enrollment projections are based on a selected average or weighted average of survival ratios (in this case, a 3-year weighted average). The low and high enrollment projections are developed using statistical distributional theory, providing the District with a more conservative (low) and more liberal (high) enrollment projection. The recommended enrollment projection is based on a detailed analysis of historical enrollment and resulting survival ratios over the past 10 years. Significant shifts in survival ratio patterns are realized and accounted for in determining projection ratios independently for each grade level. The recommended illustrates the most likely direction of the District based on more recent trends.

The range of enrollment projections from low (conservative) to high (liberal) are offered due to the limitations of the cohort survival method in factoring changes to policies, program offerings, and future changes in housing and migration patterns. For example, the low enrollment projection might be used if housing declines significantly more than anticipated; the high enrollment projection might be used if housing growth increases at a more rapid rate than seen in recent years.

It should be noted that the actual live birth counts are available through 2024 and project kindergarten enrollment through 2029-30. To project kindergarten through 2035-36, a simple average of the last 3 years of live birth counts was used.

**HISTORICAL & PROJECTED ENROLLMENT- DALLAS SCHOOL DISTRICT 2**



# Dallas School District 2

## Projected Enrollment-Recommended

Based on the Recommended projected enrollment, student enrollment in the Dallas School District 2 is projected to decrease from 2,396 in the 2025-26 school year to 2,049 students in the 2035-36 school year.

**Projected Enrollment - Recommended - District-wide**

Grade	2026-27	2027-28	2028-29	2029-30	2030-31	2031-32	2032-33	2033-34	2034-35	2035-36
K	142	143	130	146	140	140	140	140	140	140
1	148	158	158	145	162	155	155	155	155	155
2	143	143	153	153	140	157	150	150	150	150
3	144	143	143	152	153	140	157	150	150	150
4	186	145	144	144	154	154	141	158	151	151
5	181	187	145	144	144	154	154	141	158	151
6	166	182	188	147	146	145	155	156	142	160
7	158	162	177	184	143	142	142	151	152	139
8	193	156	160	175	181	141	140	139	149	149
9	197	229	184	189	207	214	167	166	165	176
10	214	201	234	189	194	212	220	171	170	169
11	251	221	208	242	195	200	219	227	176	175
12	241	263	231	218	253	204	209	229	237	184
<b>Grand Total</b>	<b>2,364</b>	<b>2,333</b>	<b>2,255</b>	<b>2,228</b>	<b>2,212</b>	<b>2,158</b>	<b>2,149</b>	<b>2,133</b>	<b>2,095</b>	<b>2,049</b>

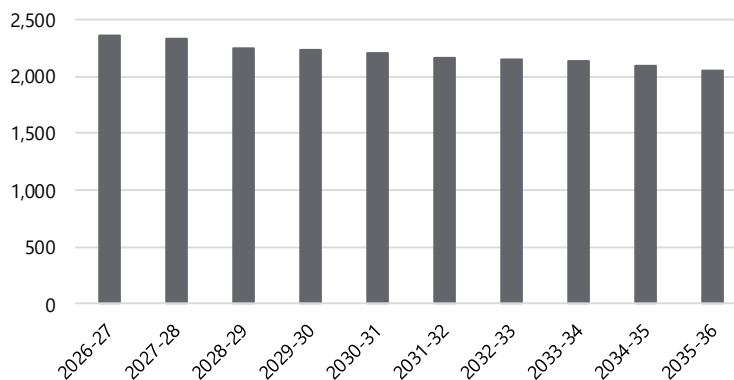
Source: Woolpert

**Projected Enrollment - Recommended - District-wide**

Grade	2026-27	2027-28	2028-29	2029-30	2030-31	2031-32	2032-33	2033-34	2034-35	2035-36
K - 3	577	587	584	596	595	592	602	595	595	595
4 - 5	367	332	289	288	298	308	295	299	309	302
6 - 8	517	500	525	506	470	428	437	446	443	448
9 - 12	903	914	857	838	849	830	815	793	748	704
<b>Grand Total</b>	<b>2,364</b>	<b>2,333</b>	<b>2,255</b>	<b>2,228</b>	<b>2,212</b>	<b>2,158</b>	<b>2,149</b>	<b>2,133</b>	<b>2,095</b>	<b>2,049</b>

Source: Woolpert

**PROJECTED ENROLLMENT - RECOMMENDED - DISTRICT-WIDE**



The varying shades of color in the table represent statistically significant cohort sizes. The darker blue represents smaller cohorts, while the darker red represents larger cohorts, comparatively.



# Dallas School District 2

## Projected Enrollment-Moderate

Based on the Moderate projected enrollment, student enrollment in the Dallas School District 2 is projected to decrease from 2,396 in the 2025-26 school year to 1,925 students in the 2035-36 school year.

**Projected Enrollment - Moderate - District-wide**

Grade	2026-27	2027-28	2028-29	2029-30	2030-31	2031-32	2032-33	2033-34	2034-35	2035-36
K	138	139	127	142	136	136	136	136	136	136
1	148	153	154	141	158	151	151	151	151	151
2	137	137	142	143	131	147	140	140	140	140
3	147	141	140	146	146	134	150	143	143	143
4	186	148	141	141	147	147	134	151	144	144
5	181	186	149	142	141	147	147	135	151	144
6	166	182	188	150	143	143	148	148	136	152
7	153	157	172	178	142	135	135	140	141	129
8	187	146	150	164	169	135	129	129	134	134
9	197	221	173	178	194	201	160	153	152	158
10	214	201	227	177	182	199	206	164	156	156
11	251	221	208	234	183	188	205	212	169	161
12	241	263	231	218	245	192	197	215	222	177
<b>Grand Total</b>	<b>2,346</b>	<b>2,295</b>	<b>2,202</b>	<b>2,154</b>	<b>2,117</b>	<b>2,055</b>	<b>2,038</b>	<b>2,017</b>	<b>1,975</b>	<b>1,925</b>

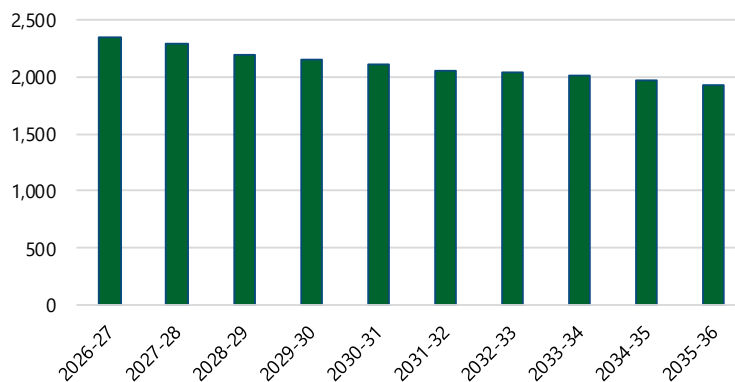
Source: Woolpert

**Projected Enrollment - Moderate - District-wide**

Grade	2026-27	2027-28	2028-29	2029-30	2030-31	2031-32	2032-33	2033-34	2034-35	2035-36
K - 3	570	570	563	572	571	568	577	570	570	570
4 - 5	367	334	290	283	288	294	281	286	295	288
6 - 8	506	485	510	492	454	413	412	417	411	415
9 - 12	903	906	839	807	804	780	768	744	699	652
<b>Grand Total</b>	<b>2,346</b>	<b>2,295</b>	<b>2,202</b>	<b>2,154</b>	<b>2,117</b>	<b>2,055</b>	<b>2,038</b>	<b>2,017</b>	<b>1,975</b>	<b>1,925</b>

Source: Woolpert

**PROJECTED ENROLLMENT - MODERATE - DISTRICT-WIDE**



The varying shades of color in the table represent statistically significant cohort sizes. The darker blue represents smaller cohorts, while the darker red represents larger cohorts, comparatively.



# Dallas School District 2

## Projected Enrollment-Low

Based on the Low projected enrollment, student enrollment in the Dallas School District 2 is projected to decrease from 2,396 in the 2025-26 school year to 1,783 students in the 2035-36 school year.

**Projected Enrollment - Low- District-wide**

Grade	2026-27	2027-28	2028-29	2029-30	2030-31	2031-32	2032-33	2033-34	2034-35	2035-36
K	136	136	125	140	134	134	134	134	134	134
1	147	150	151	138	155	148	148	148	148	148
2	136	135	138	138	126	142	135	135	135	135
3	145	137	136	139	139	127	143	136	136	136
4	184	144	136	135	138	138	127	142	136	136
5	180	184	144	136	135	138	138	127	142	136
6	165	180	184	144	136	135	138	138	126	142
7	152	154	168	172	135	127	126	129	129	118
8	184	142	145	158	161	126	119	118	121	121
9	194	214	166	169	184	188	148	139	138	141
10	209	193	214	166	169	184	188	147	139	138
11	249	214	198	220	170	173	189	193	151	142
12	237	257	220	204	226	175	178	194	198	156
<b>Grand Total</b>	<b>2,318</b>	<b>2,240</b>	<b>2,125</b>	<b>2,059</b>	<b>2,008</b>	<b>1,935</b>	<b>1,911</b>	<b>1,880</b>	<b>1,833</b>	<b>1,783</b>

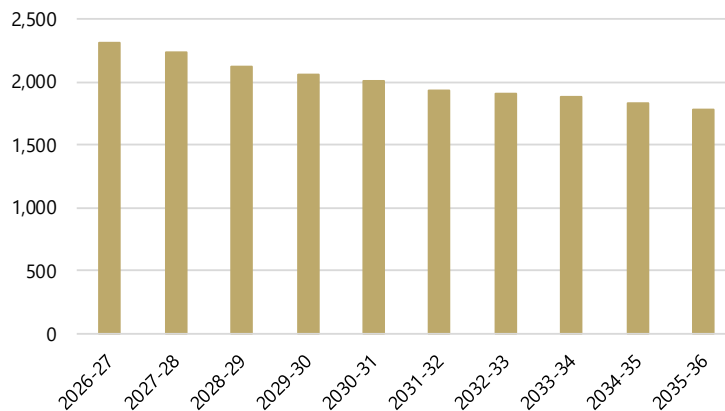
Source: Woolpert

**Projected Enrollment - Low- District-wide**

Grade	2026-27	2027-28	2028-29	2029-30	2030-31	2031-32	2032-33	2033-34	2034-35	2035-36
K - 3	564	558	550	555	554	551	560	553	553	553
4 - 5	364	328	280	271	273	276	265	269	278	272
6 - 8	501	476	497	474	432	388	383	385	376	381
9 - 12	889	878	798	759	749	720	703	673	626	577
<b>Grand Total</b>	<b>2,318</b>	<b>2,240</b>	<b>2,125</b>	<b>2,059</b>	<b>2,008</b>	<b>1,935</b>	<b>1,911</b>	<b>1,880</b>	<b>1,833</b>	<b>1,783</b>

Source: Woolpert

**PROJECTED ENROLLMENT - LOW- DISTRICT-WIDE**



The varying shades of color in the table represent statistically significant cohort sizes. The darker blue represents smaller cohorts, while the darker red represents larger cohorts, comparatively.



# Dallas School District 2

## Projected Enrollment-High

Based on the High projected enrollment, student enrollment in the Dallas School District 2 is projected to decrease from 2,396 in the 2025-26 school year to 2,083 students in the 2035-36 school year.

**Projected Enrollment - High - District-wide**

Grade	2026-27	2027-28	2028-29	2029-30	2030-31	2031-32	2032-33	2033-34	2034-35	2035-36
K	140	141	129	144	138	138	138	138	138	138
1	148	156	157	143	161	154	154	154	154	154
2	139	140	147	148	135	151	145	145	145	145
3	150	145	145	153	153	141	158	151	151	151
4	188	152	147	147	155	156	143	160	153	153
5	181	189	153	148	148	156	157	144	161	154
6	168	184	192	156	151	151	159	159	146	164
7	155	160	176	184	149	144	144	152	152	140
8	190	150	155	171	178	144	139	140	147	148
9	199	228	180	187	205	214	173	167	168	177
10	220	210	240	189	196	215	225	182	176	176
11	252	228	217	249	196	203	223	233	189	182
12	245	269	243	232	265	209	217	238	248	201
<b>Grand Total</b>	<b>2,375</b>	<b>2,352</b>	<b>2,281</b>	<b>2,251</b>	<b>2,230</b>	<b>2,176</b>	<b>2,175</b>	<b>2,163</b>	<b>2,128</b>	<b>2,083</b>

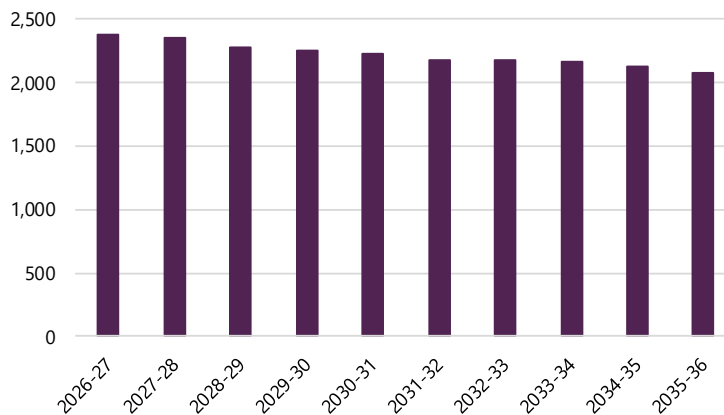
Source: Woolpert

**Projected Enrollment - High - District-wide**

Grade	2026-27	2027-28	2028-29	2029-30	2030-31	2031-32	2032-33	2033-34	2034-35	2035-36
K - 3	577	582	578	588	587	584	595	588	588	588
4 - 5	369	341	300	295	303	312	300	304	314	307
6 - 8	513	494	523	511	478	439	442	451	445	452
9 - 12	916	935	880	857	862	841	838	820	781	736
<b>Grand Total</b>	<b>2,375</b>	<b>2,352</b>	<b>2,281</b>	<b>2,251</b>	<b>2,230</b>	<b>2,176</b>	<b>2,175</b>	<b>2,163</b>	<b>2,128</b>	<b>2,083</b>

Source: Woolpert

**PROJECTED ENROLLMENT - HIGH - DISTRICT-WIDE**



The varying shades of color in the table represent statistically significant cohort sizes. The darker blue represents smaller cohorts, while the darker red represents larger cohorts, comparatively.



# Conclusion

As with any projection, the District should pay close attention to live birth counts, enrollment in elementary schools, open enrollment, non-public enrollment, in / out migration patterns, and any housing growth. It is recommended that this document be reviewed on an annual basis to determine how more recent growth and enrollment trends will impact the enrollment projections.

Woolpert is pleased to have had the opportunity to provide the District with this demographic study. We hope this document will provide the necessary information to make informed decisions about the future of the Dallas School District 2.

