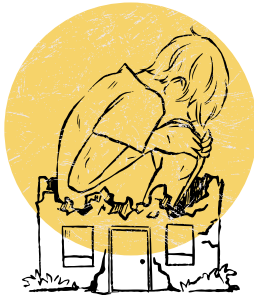




*Mayor Wayne D. Zitt, Jr. & Town Council
In partnership with NAMI NJ en Español*

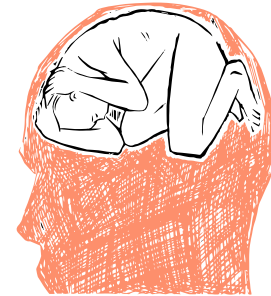
Offers: In-Person Family Support Group in Spanish



Emotional
Support and
Guidance



Information on
Conditions such
as depression,
bipolar disorder,
schizophrenia,
and ADHD



Helpful county
resources for
you and your
loved ones

Saturday, May 9, 2026

10:30 am–12:00 pm

Guttenberg Resource Center

7002 Boulevard East, Unit 115, Guttenberg, NJ 07093

For more information, please contact

Cindy T. Trejo

201-868-2315 ext 136

ctrejo@myguttenberg.com