

Marin County  
Office of Education



# ANNUAL IMPACT REPORT



2025 – 2026

# Contents

<b><u>Message From the Superintendent</u></b>	<b>1</b>
<b><u>A Look Inside the Marin County Office of Education (MCOE)</u></b>	<b>3</b>
MCOE’s Mission and Diversity, Equity, Inclusion, and Belonging Vision Statements	
Function of a County Office of Education	
Marin County Board of Education	
Marin County Board of Education Members	
Marin County Elementary and High School Districts Map	
Marin County Student Demographic Landscape	
<b><u>MCOE’s Department and Program Impacts</u></b>	<b>10</b>
Alternative Education	
Special Education	
Walker Creek Ranch	
Early Childhood Education	
College and Career Readiness	
Health, Safety, and Support	
Education Services	
Maintenance and Operations	
Business Services	
Personnel Services	
Information Services	
<b><u>MCOE Administrative Oversight</u></b>	<b>22</b>
California Collaborative for Educational Excellence (CCEE)	
Special Education Local Plan Area (SELPA)	
<b><u>Marin County School Districts and the MCOE Budget</u></b>	<b>25</b>
Marin County Districts Educational Funding Framework	
MCOE’s Educational Funding Framework	
MCOE’s Grant Highlights	
<b><u>Education Housing Initiative</u></b>	<b>29</b>
Oak Hill Workforce Housing	
<b><u>Thank You!</u></b>	<b>31</b>

# Message From the Superintendent

Marin County is home to some of California’s highest-performing schools, yet a troubling reality persists: students from historically underserved communities do not consistently reach the same levels of success as their more affluent peers. At the Marin County Office of Education (MCOE), we refuse to accept this inequity as inevitable. We envision a future where neither skin color nor zip code can predict student achievement—a goal that requires both urgent belief and sustained action.

While 2025 brought challenges, including federal efforts to roll back Diversity, Equity, Inclusion, and Belonging (DEIB) practices and rescind student mental health grants, our resolve only strengthened. The MCOE successfully partnered with state leaders to secure legal victories that protected these vital services.

Yet, student mental health remains a primary concern. Young people are navigating the long-term effects of the pandemic, the influence of social media, and anxieties fueled by political and economic instability. Preserving social safety nets is more central to our mission than ever, and our Health, Safety, and Support department has risen to the occasion with purpose and passion.

In the midst of a changing social landscape, we continue to be guided by research identifying the key leverage points for a child’s long-term success:

- **Early Childhood Education:** We are expanding the MCOE’s services and financial support for our youngest learners to ensure every child starts strong.
- **Foundational Literacy:** Our countywide, evidence-based literacy training, including phonics for elementary teachers, will continue to deepen through the 2026–27 school year.
- **Career Pathways:** Through our School-to-Career services and the new Career Technical Education Center at Terra Linda High School, we are preparing students for meaningful careers that will increasingly be shaped by emerging technologies like artificial intelligence.

As we move forward with new initiatives, we can find reassurance in our ongoing success in Alternative Education and Special Education programs. By fostering inclusive environments and personalized instruction, we provide flexible pathways for those who struggle in traditional settings, so every student has access to the tools that support progress toward graduation and a career.

I am so proud of the team at the MCOE, from the behind-the-scenes professionals who ensure fiscal stability for all our schools, to our service-oriented Human Resources and Information Technology teams, to the people who keep our facilities safe, clean, and welcoming. That pride extends to our classroom staff, who show up each day to engage, support, and inspire students, and to the dedicated team at Walker Creek Ranch, who create outdoor learning experiences that connect learners to the natural world.

This report reflects the tireless efforts of dedicated people who work every day to expand opportunity and support learning and growth for all students in Marin County.



**John A. Carroll**  
Marin County Superintendent of Schools

# A Look Inside the Marin County Office of Education (MCOE)

At MCOE, our work is grounded in service, learning, and a responsibility to support all Marin County students. The pages that follow provide a closer look at the role of a County Office of Education, the leadership of the Marin County Board of Education, and the districts that shape our local educational landscape.



# MCOE's Mission and Diversity, Equity, Inclusion, and Belonging Vision Statements

At the MCOE, our mission and Diversity, Equity, Inclusion, and Belonging vision come to life every day through collaboration, innovation, and a shared commitment to equitable learning. From expanding early childhood access and advancing evidence-based literacy to promoting wellness, inclusion, and career readiness, each department contributes to a stronger, more connected Marin where students are at the center.

## Mission Statement

The Marin County Office of Education supports learning and social-emotional growth for all students in Marin County by:

- expanding educational equity;
- ensuring the fiscal solvency of local school districts;
- inspiring educators to use evidence-based instructional practices;
- developing positive relationships with other organizations and individuals; and
- providing services and programs to supplement and enhance the work of schools in Marin.

## Diversity, Equity, Inclusion, and Belonging Vision Statement

At the Marin County Office of Education, we commit to being an organization that is inclusive, anti-racist, and culturally proficient. We do this by working together every day to be a welcoming community where everyone is seen, heard, and supported:

- We build relationships based on mutual trust and appreciation.
- We recognize and acknowledge each other personally and professionally.
- We make a point of learning how everyone's work contributes to MCOE's mission.

This is our commitment to ourselves and to the people we serve. Only by fulfilling our Diversity, Equity, Inclusion, and Belonging vision can we deliver on MCOE's overall mission.

# Function of a County Office of Education

## Overview

A county office of education is a collective term that generally refers to the roles and responsibilities of two separate and independent entities:

- County Board of Education; and
- County Superintendent of Schools.

County offices of education are considered agencies of the State of California that provide support and oversight to independent school districts located within a county. They operate under the authority of the California Education Code and act as intermediaries between the California Department of Education and local and independent school districts. County offices of education work to provide various educational services and resources to schools, teachers, administrators, and students.

## Our Role

### **Fiscal Oversight**

The MCOE provides support to school districts to ensure compliance with established fiscal regulations and monitor and approve school district budgets.

### **Local Control and Accountability Plan (LCAP) Approval**

The MCOE ensures school districts set goals, plan actions, and leverage resources to meet the identified goals designed to improve student outcomes.

### **Professional Development**

The MCOE offers training, professional development, and support to educators, parents, and the school community to enhance skills and knowledge.

### **Regionalized Programs**

The MCOE coordinates and administers regionalized educational programs and schools focusing on career technical education, alternative education, and special education.

# Marin County Board of Education

The Marin County Board of Education (MCBOE) is a seven-member body elected by voters in their area. Members are elected in staggered four-year terms to ensure continuity.

## Major Functions of the Board include:

- adopting policies governing the operation of the Board;
- serving as the appeals Board for interdistrict transfers;
- serving as the appeals Board for student expulsions and for charter school petitions;
- adopting the MCOE LCAP and budget; and
- establishing the salary for the County Superintendent of Schools.

## Board Members & Trustee Area Map

### Dr. Curtis Robinson

President - Area 6

### Li Delpan

Vice President - Area 1

### Patty Garbarino

Member - Area 2

### Cindy Johanson

Member - Area 3

### Nancy McCarthy

Member - Area 4

### Marilyn Nemzer

Member - Area 5

### Jill Sartori

Member - Area 7



Explore more about the MCBOE:

<https://marinschools.community.diligentoneplatform.com/portal/members.aspx?id=18>

# Marin County Board of Education Members



**Dr. Curtis Robinson**  
President - Area 6



**Li Delpan**  
Vice President - Area 1



**Patty Garbarino**  
Member - Area 2



**Cindy Johanson**  
Member - Area 3



**Nancy McCarthy**  
Member - Area 4

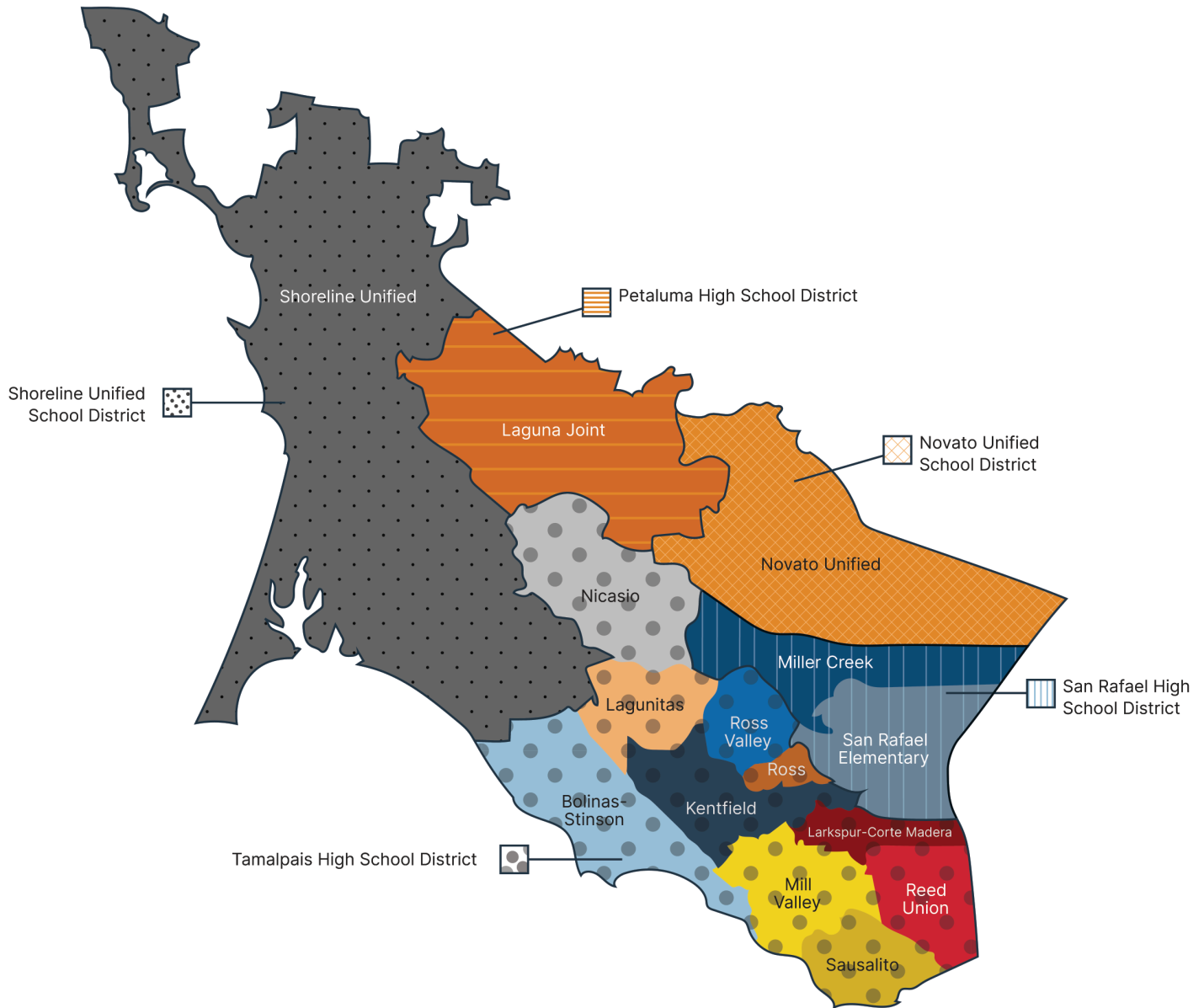


**Marilyn Nemzer**  
Member - Area 5



**Jill Sartori**  
Member - Area 7

# Marin County Elementary and High School Districts Map



## LEGEND/KEY

### ELEMENTARY SCHOOL DISTRICTS

Shoreline Unified School District	Laguna Joint School District	Mill Valley School District
Nicasio School District	Novato Unified School District	Sausalito Marin City School District
Bolinas-Stinson School District	Lagunitas School District	Larkspur-Corte Madera School District
Miller Creek School District	Kentfield School District	Reed Union School District
Ross Valley School District	San Rafael School District	Ross School District

### HIGH SCHOOL DISTRICTS

Shoreline Unified
Petaluma High School District
Novato Unified School District
San Rafael High School District
Tamalpais High School District

# Marin County Student Demographic Landscape

The MCOE serves a diverse population of more than 30,000 students from transitional kindergarten (TK) to high schools across 17 school districts and the MCOE.

Data Source: DataQuest - California Department of Education and the Certified CALPADS Fall Census

Enrollment By District 2024-25			
Bolinas-Stinson	109 (0.36%)	Novato	7,516 (24.99%)
Kentfield	1,019 (3.39%)	Reed	1,043 (3.47%)
Laguna Joint	9 (0.03%)	Ross	340 (1.13%)
Lagunitas	161 (0.54%)	Ross Valley	1,694 (5.63%)
Larkspur-Corte Madera	1,169 (3.89%)	San Rafael City Elementary	4,439 (14.76%)
MCOE	490 (1.63%)	San Rafael City High	2,706 (9.00%)
Mill Valley	2,313 (7.69%)	Sausalito Marin City	265 (0.88%)
Miller Creek	1,755 (5.83%)	Shoreline Unified	473 (1.57%)
Nicasio	34 (0.11%)	Tamalpais Union	4,542 (15.10%)

Enrollment By Ethnicity 2024-25			
White	14,605 (48.6%)	Filipino	176 (0.6%)
Hispanic or Latino	10,909 (36.3%)	Not Reported	196 (0.7%)
Two or More Races	2,424 (8.1%)	American Indian, Alaska Native	74 (0.2%)
Asian	1,156 (3.8%)	Pacific Islander	44 (0.1%)
African American	493 (1.6%)		

Enrollment By Grade 2024-25	
TK/Kindergarten	2,875 (9.56%)
Elementary	16,979 (56.45%)
High School	10,223 (33.99%)

Enrollment By Subgroup 2024-25	
Socioeconomically Disadvantaged	10,808 (35.93%)
English Learners	5,257 (17.47%)
Students with Disabilities	4,108 (13.65%)
Homeless Youth	1,503 (5%)
Foster Youth	52 (0.17%)
Migrant Education	11 (0.04%)

2024-25 Enrollment	
<b>Total Enrollment</b>	<b>30,077</b>

# MCOE's Department and Program Impacts



# Alternative Education

## Learning Without Limits

---

The MCOE's Alternative Education (Alt Ed) program includes Marin's Community School (MCS), an independent study program, and Loma Alta School, located within Marin County Juvenile Hall. These programs are designed to support student needs in an individualized learning environment.

This year, the team launched a new independent study pilot with MCS that combines in-person support with at-home learning. Students build projects around their interests. The program meets a growing demand for flexible, future-focused learning and is set to expand next year.

Teachers also gather "street data," or real feedback from students, to guide instruction and strengthen engagement. With expanded mental health services and restorative practices, students learn to reflect, repair, and stay connected to their school community.

Beyond the classroom, the Parent Project supports families through bilingual workshops that help strengthen communication, trust, and nurture positive relationships at home.

Much of the program's success comes from our dedicated and caring staff. Alt Ed is staffed by a diverse team—over 70% are people of color and more than half are bilingual—whose expertise and perspectives enhance learning for all students.



# Special Education

## Belonging and Access for All Learners

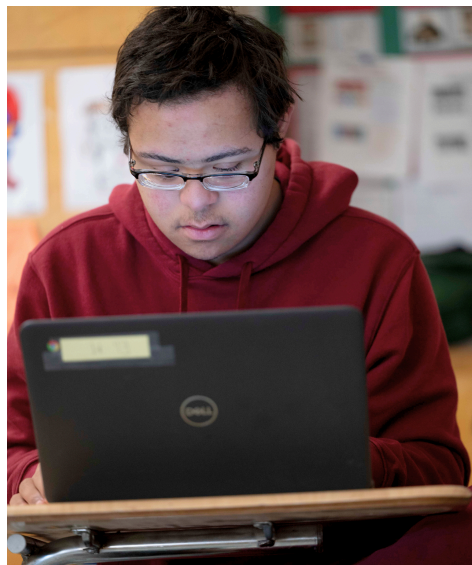
---

At the MCOE, the Special Education Department (SPED) supports Marin County school districts in providing a continuum of special education services. The MCOE is committed to fostering a sense of belonging for all students by providing opportunities for active participation in learning and school life with their peers. Across 34 regionalized classrooms serving a wide range of needs, the SPED team works closely with districts, teachers, and families to remove barriers and expand access to support learning.

Teachers lead ability awareness activities that help peers and staff better understand diverse learners, strengthening inclusion across Marin County schools. At the same time, new technologies, such as communication devices and applications, help students express themselves more fully.

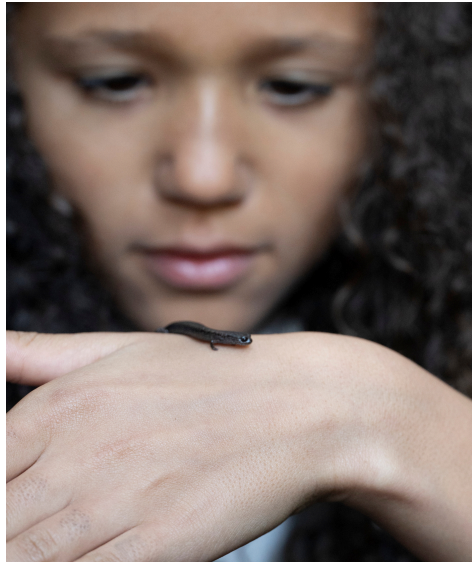
Through collaboration with families and general education partners, SPED programs continue to open doors for students to learn and develop relationships through opportunity and experience. From preschool through 12<sup>th</sup> grade and beyond, and community job placements, the focus remains on empowering each student to reach their potential.

Together, SPED and its partners continue to create communities and spaces that support all students on their own paths.



# Walker Creek Ranch

## Where Nature Nurtures Equitable Learning



At Walker Creek Ranch (WCR), learning extends far beyond classroom walls. Each year, thousands of students immerse themselves in outdoor education, discovering lessons in science, community, and self. Student participation at WCR is back to pre-pandemic numbers, reflecting a renewed commitment to outdoor education and experiential learning.

For many, the WCR experience is the first opportunity to deeply connect with nature. Students hike trails, observe wildlife, and engage with the natural world in ways that go far beyond a textbook. These experiences create space for wonder and belonging, guiding students to see themselves as part of the environment around them.

Built on four pillars—science education, nature connection, environmental stewardship, and social-emotional learning—WCR programs invite every learner to thrive. Through immersive exploration, students develop confidence, curiosity, and care for the environment.

WCR provides differentiated programs for students with varying needs, bilingual learning materials, and scholarships that reduce financial barriers so all students can participate. The return to full operations has also allowed WCR to restore a fully staffed food service program, supporting residential learning experiences that nurture both body and mind.

Students leave Walker Creek Ranch with a deeper connection to the earth and to one another, carrying with them a sense of independence, community, and the understanding that they belong in nature.

Served  
**4,200**  
Students

**83** Schools  
Served; **42%**  
from Marin  
County

# Early Childhood Education

## Humanity First: Building Equity from the Start



At the heart of the MCOE’s Early Childhood Education (ECE) work is a transformative idea: when adults thrive, children thrive. ECE supports and develops the adults who guide young children’s growth, fostering a humanity-centered, relationship-based, high-quality early learning system—where children, families, and educators are seen, heard, and empowered. By centering humanity and shared voice while nurturing adult growth, ECE programs transform early learning systems so every child experiences belonging, high-quality learning, and equitable access.

The ECE team advances equitable learning by strengthening programs, expanding access for historically underserved children, and supporting educators across Marin County. Educators and providers receive coaching, professional development, professional growth advising, technical assistance, and quality assessments that build inclusive, bias-free environments reflective of children’s cultures, languages, and identities.

These efforts ensure every child has access to culturally responsive, developmentally appropriate learning experiences.

Central to this work is the Leading for Children’s Humanity First Model™ and its Mutual Learning Method™, which ground everyday practice in equity. Mutual Learning Communities create spaces where every voice is valued, and adults grow together—strengthening relationships, expanding perspective-taking, and fostering the relational leadership needed for equitable learning.

Through these efforts, children see themselves reflected in their learning, adults lead with intention, and communities thrive by co-creating early inclusive learning environments and nurturing success for all children.

Program  
Impacts **5,575**  
Children &  
**770** Educators

**\$590,854**  
Invested to  
Strengthen ECE  
Quality in  
2024-25

# College and Career Readiness

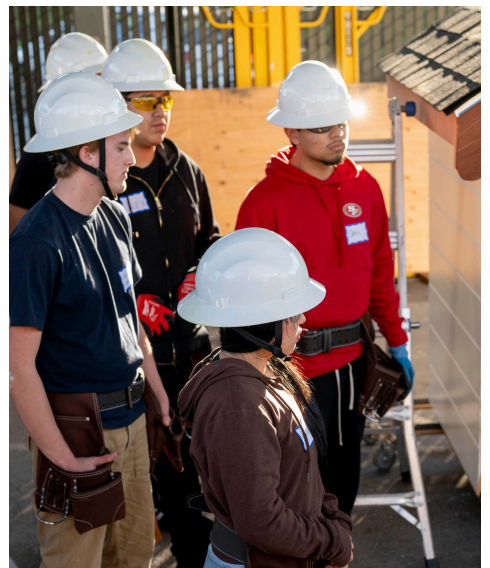
## Opening Every Door

College and Career Readiness (CCR) is the bridge that connects students to their interests and opens pathways to high-demand, livable-wage careers. Through direct, industry-aligned learning and partnerships with local employers, students see how what they learn today connects to tomorrow's opportunities.

This year, CCR's School-to-Career program expanded experiential options countywide. Students earned high school credit through 50-hour internships offered each semester, as well as job shadows, company tours, and informational interviews. Liaisons on high school campuses guide students in identifying interests and securing career exploration experiences.

The Regional Occupational Program (ROP) offers Career Technical Education (CTE) classes across Marin County in Construction Trades, Healthcare, Automotive Technology, Education, and Digital Music Production. These courses transform classroom learning into real-world experience. Many students connect directly with local employers, turning internships into paid opportunities that build skills, confidence, and clear career pathways.

At CCR, equitable learning means access, relevance, and readiness. Whether exploring career options, college-bound, or entering the workforce, CCR opens doors—and helps every learner move forward with purpose and confidence.



**\$2.5 Million**  
awarded in  
CTE Grants  
in 2025-26

Over **1,100**  
Students in  
CCR  
Activities

CTE Center  
**expands** to  
Novato

# Health, Safety, and Support

## Mental Health and Wellness

---

The MCOE's newest department, Health, Safety, and Support (HSS), continues to build a countywide network of care that helps every student learn, grow, and belong. Working alongside schools, families, and community partners, HSS strengthens the systems that make learning possible by placing wellness at the heart of education.

As a collaborative partner to all Marin County school districts, HSS provides guidance, coordination, and resources that expand access to mental and behavioral health supports. The team facilitates several monthly collaboratives, such as the Wellness Collaborative and the countywide Coordination of Services Team (COST) Collaborative, with our district partners, where student health and wellness are at the center of the conversations.

HSS also leads Marin's participation in several initiatives, including California's Children and Youth Behavioral Health Initiative (CYBHI), Community Schools, and, most recently, immigration preparedness and response. CYBHI—a revolutionary initiative that allows public schools to bill insurance for general education mental health services—will, in turn, help schools secure sustainable funding for essential mental health services. The Community Schools initiative focuses on the integration of care on behalf of students and families, whether that is housing, food, medical, wellness, and more, to reduce the barriers that keep our most at-risk students from accessing their education.

Lastly, HSS, in coordination with multiple community-based organizations, has led Marin County in preparing all educators for the possibility of immigration enforcement at schools. At the center of this work is protecting our students, staff, and families and ensuring their legal rights are protected. These efforts reflect HSS's broad commitment to prevention, crisis response, mental health care, and the systems that sustain student well-being.

By surrounding students with coordinated supports and trusted adults, HSS helps create classrooms where young people feel safe, supported, and ready to learn.



# Education Services

## Empowering Educators to Transform Learning

The Education Services Department (Ed Services) supports more than 2,000 educators and approximately 30,000 students across Marin County. The mission of Ed Services is to support educators and leaders in creating classrooms where every student belongs and thrives. The team builds capacity and connection through professional learning, educator induction, curriculum design, and coaching to turn evidence-based research into daily practice.



With support from Ed Services, more than 300 educators from the public and private sectors in Marin County have been trained in the science of reading, including phonics. These teachers are guiding students to decode language, build comprehension, and see themselves as strong readers.



In mathematics, Ed Services is leading a countywide implementation through the Building Thinking Classrooms model, which uses collaborative problem-solving and visible thinking to enable learning. This innovative approach is being utilized by districts and classrooms throughout Marin County.

Ed Services plays an integral role in California's accountability system for local districts. The framework ensures districts set clear goals, use data to measure progress, and align funding to improve student outcomes. The team also convenes collaborative design sessions and professional networking opportunities where district leaders can problem-solve, exchange resources, and share proven practices that strengthen their systems together.



# Maintenance and Operations

## Shaping Equitable Spaces

---

For the Maintenance and Operations Department (M&O), equity starts with where people work and learn. When students and educators enter into a classroom that feels clean, safe, and comfortable, learning becomes possible. The same holds true for MCOE employees; well-designed workspaces encourage collaboration, focus, and a sense of shared community.



The department maintains MCOE campuses across Marin County and collaborates with smaller districts to enhance learning environments. M&O conducts facility inspections, coordinates classroom moves, and upgrades systems so that every student, no matter where they learn, benefits from well-maintained, safe, welcoming spaces built to the same high standards.



Going beyond maintenance, the team modernizes buildings to create equitable learning conditions across sites, shares expertise with partner districts, and works with custodial staff to ensure classrooms are clean and ready each morning.

Behind the scenes, new technologies and streamlined systems have made operations more efficient, helping learning environments stay responsive, reliable, and ready for the day ahead.



The department's vision is clear: create modern, equitable spaces that inspire comfort, focus, and connection. M&O's work impacts every teacher, student, and employee who enters our buildings and classrooms every day.

# Business Services

## Prudent Management Makes Learning Possible

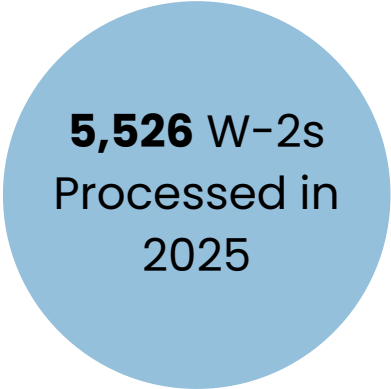
---

The MCOE’s Business Services Department works largely behind the scenes, but its impact is felt in every classroom across Marin County. From ensuring fiscal stability to processing millions of dollars in payroll, the department’s work enables districts to focus on learning and positive student outcomes.

This year, Business Services is leading a multi-year implementation of Frontline, a new countywide fiscal and personnel management system that will replace an outdated platform with a more efficient, transparent, and user-friendly system. This software will streamline how every district processes budgets, payroll, and contracts.

As the financial backbone for Marin’s public schools, Business Services leads AB 1200 fiscal oversight, reviewing district budgets to monitor compliance, protecting long-term solvency, and strengthening financial planning. The team supports 17 school districts and the Marin Pupil Transportation Agency (MPTA)—a Joint Powers Agency (JPA)—reinforcing stability across Marin County’s education system.

At the same time, Business Services manages the complex financial operations that keep schools moving. In 2025, the department processed more than 5,526 W-2s, delivering timely payroll for employees across Marin County. Their precision behind the scenes creates the steady foundation that districts rely on to focus on supporting learning for all students.



**5,526 W-2s**  
Processed in  
2025



Offering Over  
**100 Hours** of  
County-Wide  
Trainings



Budget  
Support for **17**  
**Districts** and  
**1 JPA**

# Personnel Services

## Building a Stronger, More Connected Workforce

---

The Personnel Services Department brings the MCOE’s mission and Diversity, Equity, Inclusion, and Belonging vision to life. The department is responsible for creating accessible information, supporting all employees across multiple sites, and ensuring every staff member feels a sense of belonging.

In 2024-25, the department delivered meaningful improvements to support employees. A redesigned, accessible handbook now serves as a single source of information. Onboarding was reimagined to ground new hires in the MCOE’s mission, culture, and systems. Clearer, more direct communication has improved understanding of compensation, benefits, and general employment.

In addition, the department strengthened equity-centered hiring by refining practices, clarifying expectations, and preparing interview teams to make evidence-based, inclusive decisions. These efforts help attract candidates whose experience more closely reflects the students they serve. Personnel also expanded partnerships, including an Educator Pathway Program that opens doors for local residents pursuing careers in education.

A comprehensive Classification Study modernized job descriptions, strengthening alignment with organizational needs and supporting long-term workforce planning. With a fully staffed department and clearly defined roles, employees now receive faster, more consistent support.

By strengthening systems, advancing inclusion, and prioritizing clarity, Personnel is creating the conditions for employees to thrive—ultimately supporting positive student outcomes across Marin County schools.



# Information Services

## Managing and Strengthening Technology

---


The Information Services Department (IS) supports all operations by managing the technology systems that keep the MCOE running efficiently. IS oversees hardware licensing and software platforms, ensuring that communication systems remain stable and secure. Regular convenings with district technology leaders strengthen alignment, providing a forum for sharing updates, coordinating efforts, and responding to emerging needs.

In the 2025–26 school year, IS, in partnership with the MCOE Business Services, is launching Frontline, a comprehensive system that streamlines workflows and increases efficiency across financial and operational processes. The transition is designed to provide the MCOE and Marin County school districts with a more intuitive interface, faster processing, and improved accuracy. Additionally, with support from Education Services, IS also facilitates an Artificial Intelligence (AI) community that focuses on exploring the ethical and effective use of AI in educational settings.

By strengthening the reliability and accessibility of the systems educators and families depend on, IS expands access to information, resources, and learning opportunities for students across Marin County.



Completed  
**4,000+**  
Support  
Tickets



Internet  
Support for **17**  
Public and **3**  
Private  
Schools



**Over 50**  
Department  
and Staff  
Trainings

# MCOE Administrative Oversight

The MCOE serves as the administrative agent, overseeing governance, fiscal management, and operational infrastructure for both the California Collaborative for Education Excellence (CCEE) and the Marin County Special Education Local Plan Area (SELPA). Learn more about each department's impact on the following pages.

## CCEE

California Collaborative  
*for* Educational Excellence

---



# California Collaborative for Educational Excellence (CCEE)

## Equity in Action Through Collaboration

---

As the Administrative Agent for the CCEE, the MCOE plays a key role in supporting this statewide agency to carry out its vision: *CCEE transforms public education so that every student is inspired and prepared to thrive as their best self in the world.*

The MCOE is responsible for:

- developing and administering the operating budget of the CCEE, with approval of the Department of Finance;
- managing and drafting all CCEE contracts;
- serving as the lead on personnel, including provisioning benefits for CCEE staff; and
- creating guidance to support organizational compliance with applicable laws and policy.

Through our support of CCEE's core operational functions, the MCOE helps CCEE carry out a variety of statewide programs, including, but not limited to, literacy and math networks, the Community Engagement Initiative, Direct Technical Assistance, and facilitation of the Statewide System of Support. These and other CCEE initiatives create the conditions for facilitating continuous improvement for Local Educational Agencies (LEAs) within California's system of public school support, which positively impacts educators and students.

The MCOE's partnership with CCEE underscores how collaboration, sound operations, and a shared vision build the foundation for equitable learning and lasting student success statewide.



# Special Education Local Plan Area (SELPA)

## Belonging for Every Learner

---

The SELPA collaborates with schools, educators, and families to ensure that every student, regardless of ability, has the support and opportunities needed to learn and thrive. In partnership with 18 Local Educational Agencies (LEAs), the SELPA builds inclusive systems where all students feel seen, valued, and connected to their learning community.

Through the Supporting Innovative Practices grant, teams from LEAs collaborate to explore Universal Design for Learning, a framework to improve and optimize learning for all students, and to develop strategies for designing and delivering instruction in an inclusive learning environment. The grant extends to early childhood programs, fostering inclusion and belonging from when students first enter education.

The Marin County SELPA also supports two Demonstration Sites that model the implementation of evidence-based practices for students with Autism. Through high-quality training, coaching, and organizational support, these sites strengthen the teaching capacity of teachers, paraeducators, related service providers, and administrators. The Demonstration Sites are designed to build sustainable systems that promote collaboration, expand access to resources, and maintain a long-term commitment to effective practices that improve student outcomes.

Together with LEAs and community partners, the SELPA advances cohesive systems, expands shared leadership, and removes learning barriers to ensure inclusive practices are embedded and sustained over time. This shared commitment ensures that every student belongs, learns, and contributes meaningfully to their school and community.



# Marin County School Districts and the MCOE Budget

Through a combination of state, federal, and local funding, Marin’s public school districts sustain safe, inclusive, and welcoming learning environments while maintaining fiscal stability.

The MCOE provides support and fiscal oversight to school districts across Marin County. The County Office of Education directs funding and resources toward operating MCOE schools and programs, advancing countywide initiatives, and delivering professional learning that builds educator capacity and improves student outcomes.



# Marin County School Districts Educational Funding Framework

Public education across Marin County is sustained by a \$642 million TK–12 funding framework that combines state, federal, and local resources to support instruction, services, and student success.

Data Source: 2024–2025 School Year based on SACS General Fund Unaudited Actuals Unrestricted and Restricted combined.

Marin County TK–12 School Districts	
Source	Revenue
Local Control Funding Formula (LCFF)	\$436,952,821
Federal	\$15,681,596
State	\$60,582,623
Local	\$60,101,472
Parcel Tax	\$66,924,987
Transfers In	\$2,456,807
<b>Total Revenues</b>	<b>\$642,700,306</b>

Marin County TK–12 School Districts	
Source	Expenditures
Certificated	\$261,716,339
Classified	\$89,542,605
Benefits	\$159,670,998
Supplies	\$18,792,222
Services	\$120,462,941
Capital Outlay	\$1,360,740
Indirect Costs	(\$491,423)
Debt Services	\$1,133,757
Transfers to Agencies	\$12,925,010
Transfers Out	\$6,776,691
<b>Total Expenditures</b>	<b>\$671,889,880</b>

# MCOE's Educational Funding Framework

Public education at the MCOE is sustained by a \$68 million funding framework that combines the Local Control Funding Formula (LCFF), state, federal, and local resources to support instruction, services, and student success countywide.

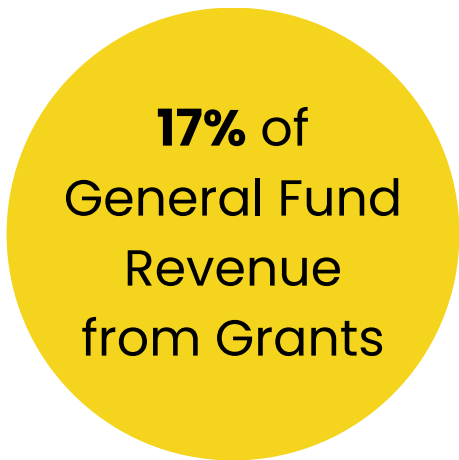
Data Source: 2024-2025 School Year based on SACS General Fund Unaudited Actuals Unrestricted and Restricted combined.

Marin County Office of Education	
Source	Revenue
Local Control Funding Formula (LCFF)	\$21,836,395
Federal	\$2,618,281
State	\$16,928,303
Local	\$27,291,989
Transfers In	\$152,325
<b>Total Revenues</b>	<b>\$68,827,293</b>

Marin County Office of Education	
Source	Expenditures
Certificated	\$13,808,180
Classified	\$15,080,761
Benefits	\$13,251,395
Supplies	\$1,012,055
Services	\$17,316,214
Capital Outlay	\$129,533
Indirect Costs	(\$62,342)
Transfers Out	\$271,779
<b>Total Expenditures</b>	<b>\$60,807,575</b>

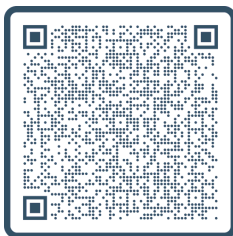
# MCOE's Grant Highlights

Grant Highlights: 2025–2026		
Department	Grant Areas	Award
Alternative Education	Specialized Service Delivery, etc.	\$547,905
Special Education	Professional Development, Specialized Service Delivery, Dispute Resolution, etc.	\$3,966,302
Education Services	Professional Development, Curriculum and Induction, Program Development, Foster Youth, etc.	\$2,644,528
College and Career Readiness	Program Development, etc.	\$1,420,144
Health, Safety, and Support	Student Wellness Ambassador Program (SWAP), etc.	\$761,329
<b>Grant Awards</b>		<b>\$9,340,208</b>



# Education Housing Initiative

The Oak Hill Workforce Housing Project resulted from an executive order authorizing the development of affordable housing on surplus state property. The Marin County Public Finance Authority, a Joint Powers Authority (JPA), was formed by the County of Marin and the MCOE to serve as the legal entity overseeing the project.



**Explore more about Oak Hill:**

<https://www.marincounty.gov/departments/cda/housing-and-grants/creating-housing/new-and-upcoming-affordable-housing/oak-hill-apartments-project>

# Oak Hill Workforce Housing

Investing in Educators and Strengthening Our Schools



The MCOE is partnering with the County of Marin to develop Oak Hill, a first-of-its-kind workforce housing community in California.

Following Board approval, the Oak Hill Workforce Housing is scheduled to create 135 below-market-rate rental homes, including 92 apartments reserved for educators. These homes will provide much-needed relief for teachers and school staff who are currently priced out of the county they serve.

Teachers who can live in the communities where they teach are more likely to stay long-term, develop deeper relationships with students and families, and contribute to a stronger, more stable school culture. Oak Hill helps ensure our future workforce is stable and more diverse, benefiting our students.

Construction is expected to begin in 2026, with move-in anticipated in 2028-29. This initiative is a homegrown solution to sustaining a thriving, diverse education workforce in Marin County.

**68%** of  
Housing  
Reserved for  
Educators

Designed to  
Increase  
Teacher  
Retention

Anticipated  
Completion  
**2028-29**

# Thank you!

We would like to thank our students, staff, families, and educational partners for all they have done and all they will do for our communities this year.

Visit our website at [www.marinschools.org](http://www.marinschools.org) to learn more about the MCOE.



Marin County  
Office of Education



# ANNUAL IMPACT REPORT

## **Marin County Office of Education**

1111 Las Gallinas Avenue

San Rafael, CA 94903

(415) 472-4110

[www.marinschools.org](http://www.marinschools.org)