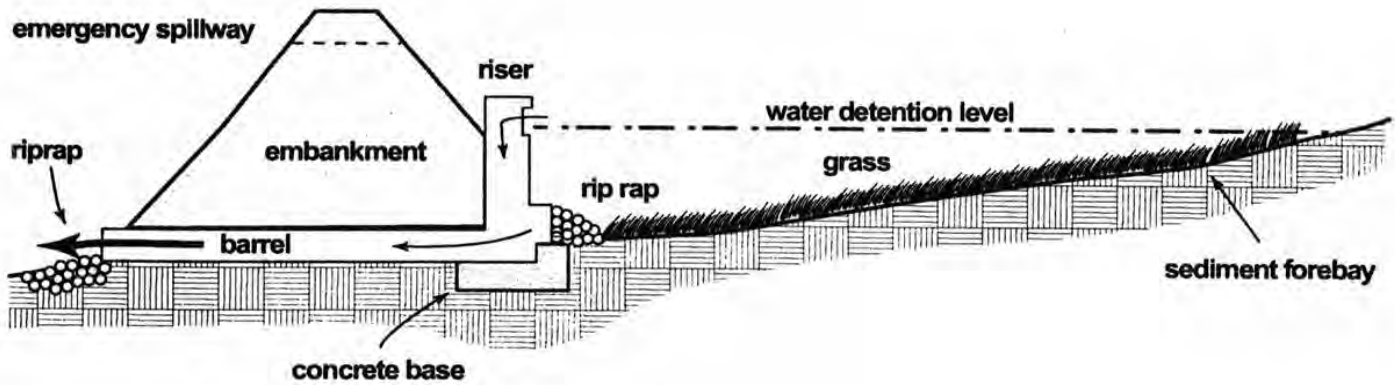


# Operations & Maintenance Plan

## Dry Stormwater Ponds

BMP ID  
Owner Minneapolis Public Schools  
Date xxxxx

Location Jordan Park  
Inspector Metro Blooms



## Overview of Bioretention / Dry Ponds

### **Dry Pond Operations:**

---

*Bioretention works by routing stormwater runoff into landscaped depressions. These landscaped depressions are designed to hold and remove many of the pollutants in a manner similar to natural ecosystems. During storms, runoff will pool within the system. The pooled runoff in the bioretention facility filters through the Engineered Soil Mix. The filtered runoff can either be designed to enhance groundwater infiltration or can be collected in an under drain and discharged per local stormwater management requirements.*

### **Dry Pond Inspection:**

---

*Inspection of the dry pond is required after each major rain (more than 1" of rainfall) or at least 4 times per year during the growing season (March - November).*

*During inspection the following should be noted on the inspection form*

- *Presence of any trash, debris and soil accumulation*
- *Presence of weeds*
- *Condition of plants (note any plants that appear to be dead or dying)*
- *Condition of overflow structure and inlets.*
- *Visible indication of clogging or overtopping.*

### **Dry Pond Maintenance:**

---

*Routine maintenance shall be done as prescribed in the approved plan, and when an inspection reveals any of the following conditions:*

- *Trash, debris and soil accumulation*
- *Soil accumulation*
- *Design depth is not sufficient*
- *Presence of weeds*
- *Presence of invasive plants or weeds (Canada Thistle, Garlic Mustard and any tree seedlings, etc.)*
- *Overflow structure in need of cleaning (ex: grate covered with grass/leaves)*
- *Any damage to the inlet structure exists.*
- *Any indication that dry pond has insufficient capacity (debris on pavement surrounding the dry pond area, etc.).*
- *Any standing water 48 hours after a rain event*



TOTAL PROPERTY - 276,139 sq ft / 6.34 acre	
TOTAL IMPERVIOUS:	
building - 65,844 sq ft / 1.5 acre	IMPERVIOUS to BMP:
parking - 43,787 sq ft / 1.01 acre	building - 65,844 sq ft / 1.15 acre
walk - 17,768 sq ft / .41 acre	parking - 43,787 sq ft / 1.01 acre
TOTAL PERVIOUS:	walk - 17,768 sq ft / .41 acre
turf/landscaping - 148,740 sq ft / 3.42 acre	TOTAL IMPERVIOUS TREATED:
	100%
	50% quality reduction
	50% quantity reduction

**Jordan Park School**  
 Stormwater Drainage Map  
 prepared by: Metro Blooms  
 for: Minneapolis Public Schools



## City of Minneapolis Surface Waters and Sewers Stormwater Operation and Maintenance Plan

BMP ID: <span style="color: blue;">6493</span>		Jordan Park Dry Pond/Bioretenion		
Inspection Date -- / -- / 20--		Inspector: <span style="color: blue;">Metro Blooms Design+Build</span>		
Inspection Activity	Observations/ Measurements	Maintenance	Maint. Required	Actions Required
<b>Inlets &amp; Contributing Areas</b> Inspect scupper pipes, vegetated swale inlet and contributing areas for dirt, trash, leaves, sediment buildup, erosion and cracks or damage.	3 inlets - 1 feeding in from parking lot (SE), 1 from school roof (NW), and 1 from street (SW)	Sweep or remove litter/debris and sediment.  Seed, mulch, replant, sod or repair any bare or eroded areas contributing to the BMP.  Determine repair work needed or who to notify if concrete or piping is damaged.	Yes No  Yes No  Yes No	Date Completed:    /    / Responsible Party:
<b>Basin</b> Check for sediment buildup and any erosion or bare spots in the basin.		Remove accumulated sediment and debris.  Seed, plant, mulch or blanket and stabilize any bare or denuded areas.	Yes No  Yes No	Date Completed:    /    / Responsible Party:
<b>Outlet Structure</b> Inspect outlet structure for debris or trash and to verify if operating as designed.		Remove debris or vegetation impeding outlet flow of water	Yes No	Date Completed:    /    / Responsible Party:
<b>Vegetation</b> Visual inspection of edge, basin bottom and all landscaping adjacent to or contributing to the basin for dead or diseased plants, weeds and open areas.		Remove dead plants.  Remove cat tails, invasive plants, weeds and volunteer woody vegetation. Prevent soil loss by protecting bare soils after weeding.  Replace dead plants and vegetate open areas.	Yes No  Yes No  Yes No	Date Completed:    /    / Responsible Party:
<b>Mulch</b> Inspect mulch condition and depth.		Add mulch whenever mulch levels are less than 3" using only a double-shredded hardwood mulch.	Yes No	Date Completed:    /    / Responsible Party:
<b>Dewatering</b> Visual inspection for any standing water present in the basin.		<i>If standing water present 72-hours after storm event notify maintenance contractor. If unable to drain basin contact City of Minneapolis 612-673-2406.</i> Maintenance Contractor: Metro Blooms	Yes No	Date Completed:    /    / Responsible Party:



SE inlet storm drain that feeds from parking lot in October - clear of debris

Container parked by school near drain - not significantly impeding flow



SE inlet condition in October - clear of debris

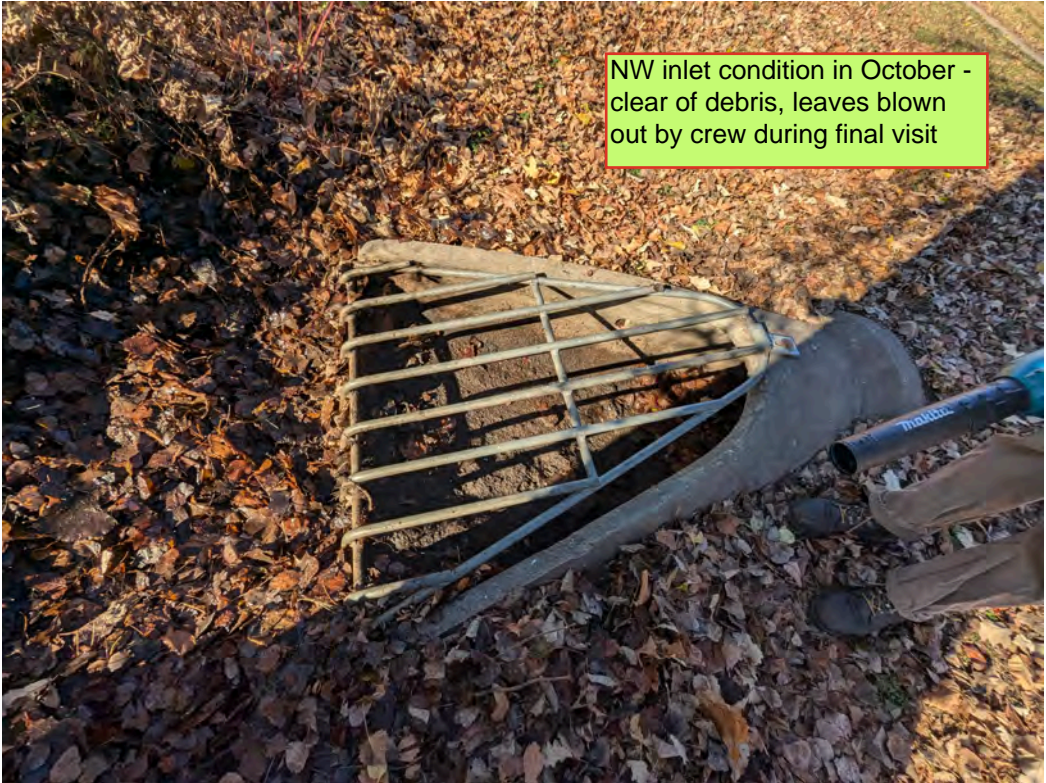


SW inlet condition in  
October - clear of debris



Weir overflow structure  
behind SE inlet in October

NW inlet condition in October -  
clear of debris, leaves blown  
out by crew during final visit



Turf basin in October -  
excellent condition





NW inlet vegetation in June



SE inlet vegetation in October - willow surrounded by dogwood and forbs