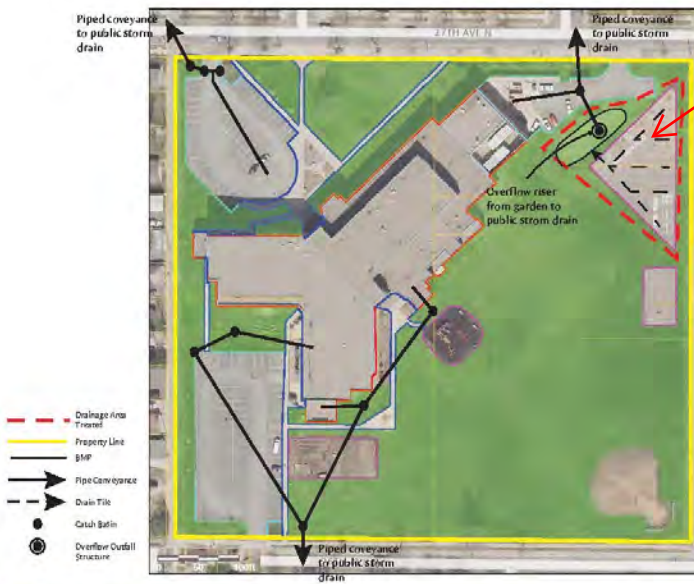
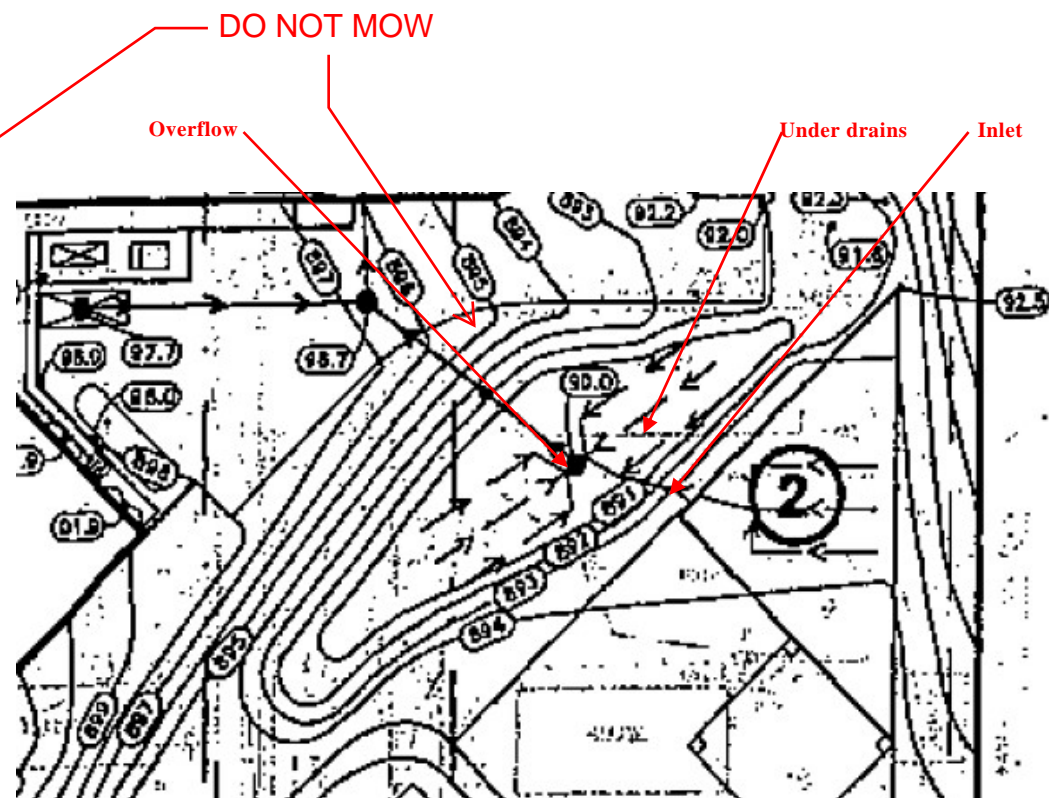


## Rain Garden/Bioretenion



<b>TOTAL PROPERTY:</b> 380,878 sq ft / 8.74 acre	<b>PERCENT IMPERVIOUS:</b> 36%
<b>TOTAL IMPERVIOUS:</b> 136,480 / 3.13 acre	<b>IMPERVIOUS to BMP:</b> 10,454 / .24 acre
building - 61,479 sq ft / 1.41 acre	athletic court - 10,454 sq ft / .24 acre
parking / drive - 51,882 sq ft / 1.2 acre	
sidewalk - 16,810 sq ft / .38 acre	
playground - 6,309 sq ft / .14 acre	
<b>TOTAL PERVIOUS:</b>	<b>TOTAL IMPERVIOUS TREATED:</b>
turf / landscaping - 238,916 sq ft / 5.48 acre	13% treated
vegetable garden - 5,482 sq ft / .13 acre	6.5% reduction



**Nellie Stone Johnson**  
**807 27th Ave N**  
**Minneapolis, MN 55411**

**BMP ID: 6676**

**Location:**  
 NE corner of property, between  
 school building and playground

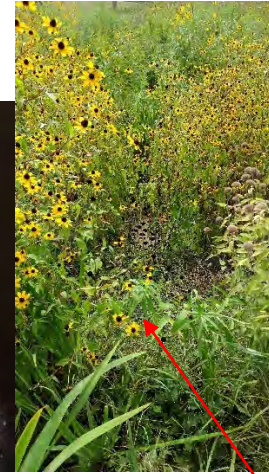
**Inspection Frequency:**  
 3x per growing season, with one visit within 48 hours after a rain event of  
 at least 1 inch

**Description of Devices:** A single sub-catchment area contributes to this raingarden, the mulched playground area that has a network of drain tiles underneath. These tiles collect stormwater runoff and deliver it to the raingarden via an inlet on its SE side. A network of drain tiles run underneath the raingarden, and connect to the raingarden’s overflow structure, a grated manhole cover. The raingarden is ~2800 ft<sup>2</sup> and 6” deep, measured from overflow structure.

**Basin  
facing north**



**Under drains  
connecting to  
overflow**



**Overflow**

**Basin facing  
NE**



**Basin facing  
east**



BMP ID 6676		Bioretention/Rain Garden		
Inspection Date / / 20		Inspector:		
Inspection Activity	Observations Measurements	Maintenance	Maint. Required	Actions Required/Date Completed/Responsible Foreman
<b>General:</b> Inspect basin and contributing areas for dirt, trash, leaves etc.		Sweep and remove dirt, trash, leaves and litter/debris around catch basins in parking lot. Schedule a parking lot sweeping if necessary.	Yes No	/ / 20 Responsible Party:
<b>Inspect inlets:</b> Check for sediment and debris build-up at inlets, especially from parking lot		Remove accumulated sediment and debris with shovel and/or vacuum. Schedule a vacuum truck contractor if necessary.	Yes No	/ / 20 Responsible Party:
<b>Vegetation:</b> Inspect raingarden edge, basin bottom, swale and all landscape adjacent to or contributing to the basin for erosion, dead or diseased plants, weeds and bare spots.		Remove dead or diseased plants and weeds by pulling from the roots. Do not use herbicide. Re-plant any bare or denuded areas.	Yes No	/ / 20 Responsible Party:
<b>Mulch:</b> Inspect mulch condition and depth.		Mulch depth should be 2-3". Re-mulch exposed areas without vegetative cover. Use only double-shredded hardwood mulch.	Yes No	/ / 20 Responsible Party:
<b>Dewatering</b> Visual inspection for any standing water present in the basin.		Notify maintenance contractor of need for service if there is standing water at the surface 48 hours after a storm event. Schedule maintenance by Metro Blooms or another contractor.	Yes No	/ / 20 Responsible Party: