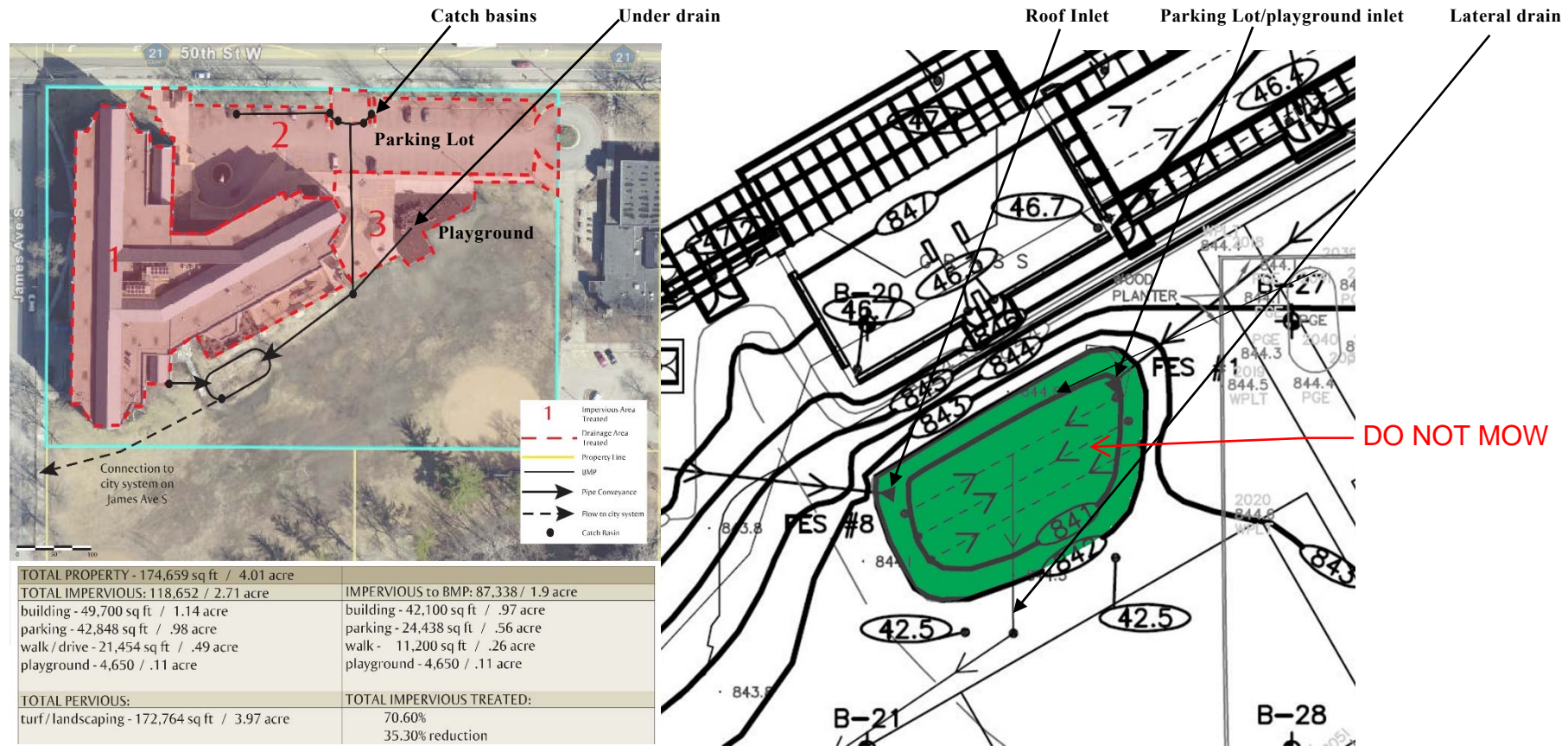


## Rain Garden (behind school)



**Burroughs Elementary School**

**Location:**  
South Side of property.

**Inspection Frequency:**

3x per growing season, with one visit within 48 hours after a rain event of at least 1 inch

**Description of Devices:** Raingarden collects rainwater runoff three catchment areas of property: 1) Roof of building is collected on conveyed to an inlet at west side of RG, 2) Parking lot drains to catch basins, which are piped to inlet at east side of raingarden, and 3) Playground area runoff is collected via underdrains, which wye into the parking lot pipe to RG. Raingarden area is approximately 1500ft<sup>2</sup> and 9” deep. Raingarden has a series of horizontal underdrains that connect to lateral drain, which runs across the field to city storm sewer on James Ave.

Notes: Return reports annually to Minneapolis Public Works SWS [stormwater@minneapolismn.gov](mailto:stormwater@minneapolismn.gov)



**Emergency overflow**

**Raingarden Basin**

**Inlet from parking lot**



**Inlet from Roof**



**Inlet from parking lot**



**Metro Blooms Inspector**

**Raingarden basin**

**Fence to keep kids out of garden**

BMP ID 7178		Rain Garden		
Inspection Date / / 20		Inspector:		
Inspection Activity	Observations Measurements	Maintenance	Maint. Required	Actions Required/Date Completed/Responsible Foreman
<b>General:</b> Inspect basin and contributing areas for dirt, trash, leaves etc.		Sweep and remove dirt, trash, leaves and litter/debris around catch basins in parking lot. Schedule a parking lot sweeping if necessary.	Yes No	/ / 20 Responsible Party:
<b>Inspect inlets:</b> Check for sediment and debris build-up at inlets, especially from parking lot		Remove accumulated sediment and debris with shovel and/or vacuum. Schedule a vacuum truck contractor if necessary.	Yes No	/ / 20 Responsible Party:
<b>Vegetation:</b> Inspect raingarden edge, basin bottom, swale and all landscape adjacent to or contributing to the basin for erosion, dead or diseased plants, weeds and bare spots.		Remove dead or diseased plants and weeds by pulling from the roots. Do not use herbicide. Re-plant any bare or denuded areas.	Yes No	/ / 20 Responsible Party:
<b>Mulch:</b> Inspect mulch condition and depth.		Mulch depth should be 2". Re-mulch exposed areas without vegetative cover. Use only double-shredded hardwood mulch.	Yes No	/ / 20 Responsible Party:
<b>Dewatering</b> Visual inspection for any standing water present in the basin.		Notify maintenance contractor of need for service if there is standing water at the surface 48 hours after a storm event. Schedule maintenance of underdrains by Metro Blooms or another contractor.	Yes No	/ / 20 Responsible Party: