



FutureThink
PLAN TO EMPOWER

FINAL REPORT



**Facilities
Construction
Commission**

Lakota Local School District

Butler County

Enrollment Projections

March 11, 2026

INTRODUCTION

Based on a request from the Ohio Facilities Construction Commission, **FutureThink** was contracted to develop enrollment projections for the Lakota Local School District.

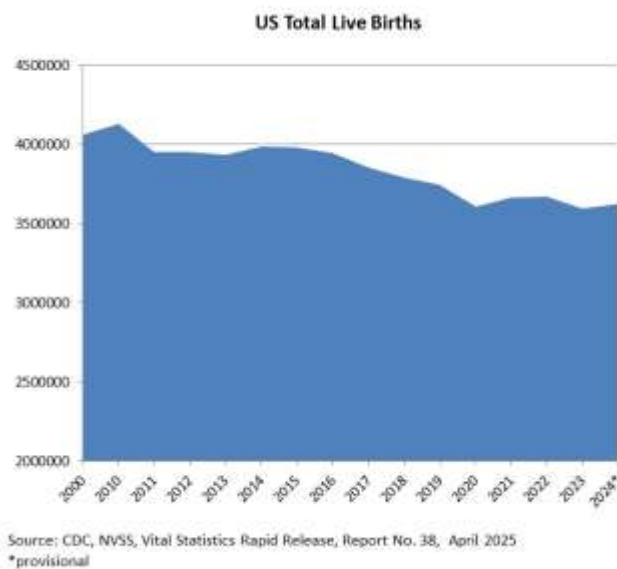
This report contains ten-year enrollment projections, which were developed for the Lakota Local School District by analyzing the following data:

- ▶ Live birth data
- ▶ Historical enrollment
- ▶ Community school enrollment
- ▶ Open enrollment
- ▶ Community demographics
- ▶ Housing information

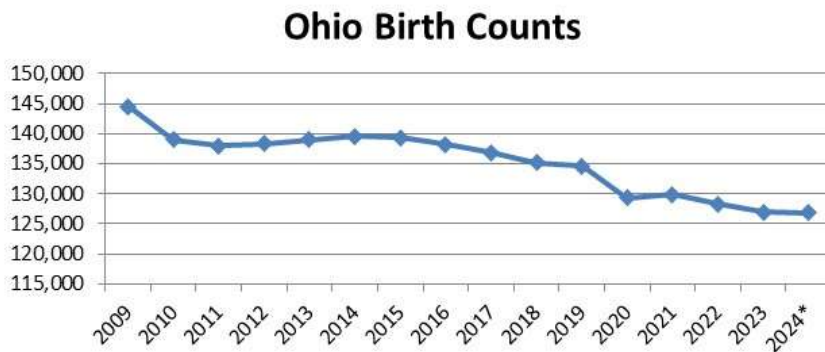
The projections presented in this report are meant to serve as a planning tool for the future and represent the most likely direction of the District.

NATIONAL & OHIO TRENDS IN ENROLLMENT

The United States as a whole continues to undergo major shifts in public student enrollment. Births are a significant part of this shift. From 2000 to 2010, births increased, then declined from 2011 to 2013. In 2014, there was a slight uptick. Since 2014, there has been steady decline. The decrease from 2019 to 2020 was approximately 4 percent. However, in 2021, there was a slight uptick of 1.5 percent. Since, birth counts reached an all-time low in 2023 and had another slight uptick in 2024 of less than 1 percent.



From 2009 to 2011, Ohio births declined by 12,760 and then somewhat leveled off through 2014. Since 2014, births have dropped each year with a slight uptick from 2020 to 2021. From 2019 to 2024, births declined by approximately 6 percent.

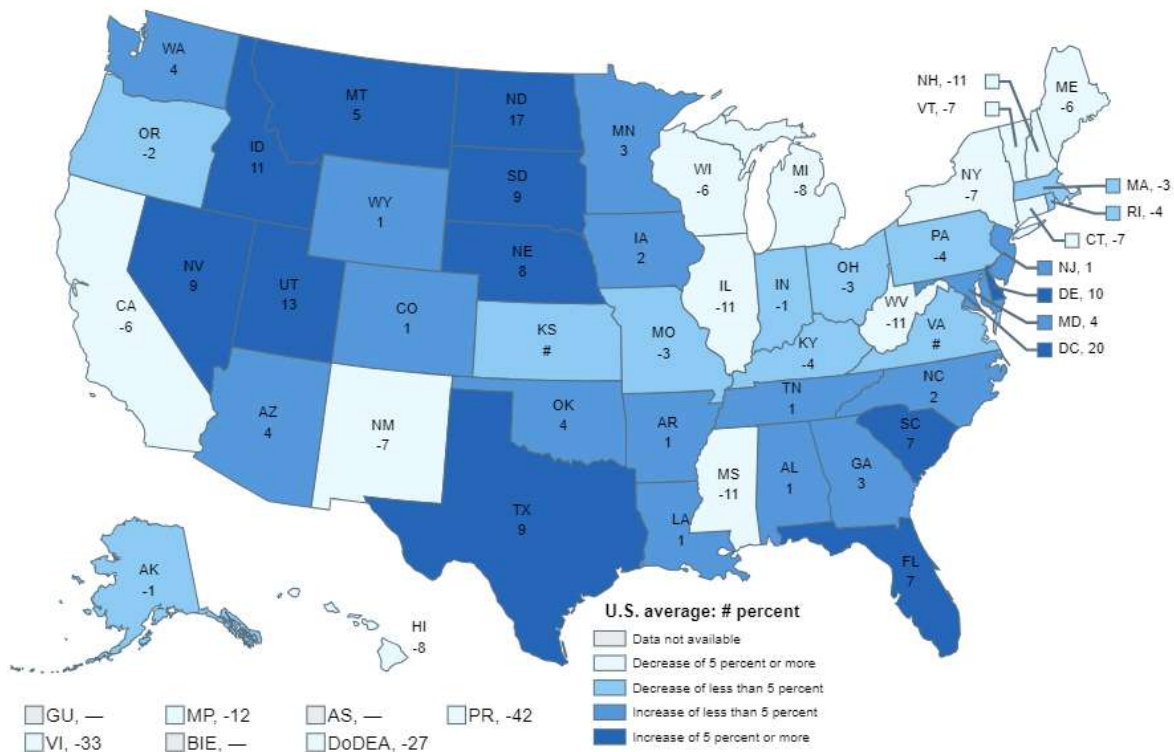


Lakota Local School District

In addition to births dropping in Ohio, the state is also aging. The median age in 2023 was 39.9 years of age while the national median age was 38.9 years. In 2010, the median age in Ohio was 38.3 years.

The figure below illustrates the change in Pre-K - 12 public school enrollment from the 2012-13 to the 2022-23 school year. States with growth in enrollment were primarily in the southeast and west. Ohio experienced a decrease of 3 percent.

Figure 2. Percentage change in public elementary and secondary school enrollment, by state or jurisdiction: Fall 2012 to fall 2022



— Not available.

Rounds to zero.

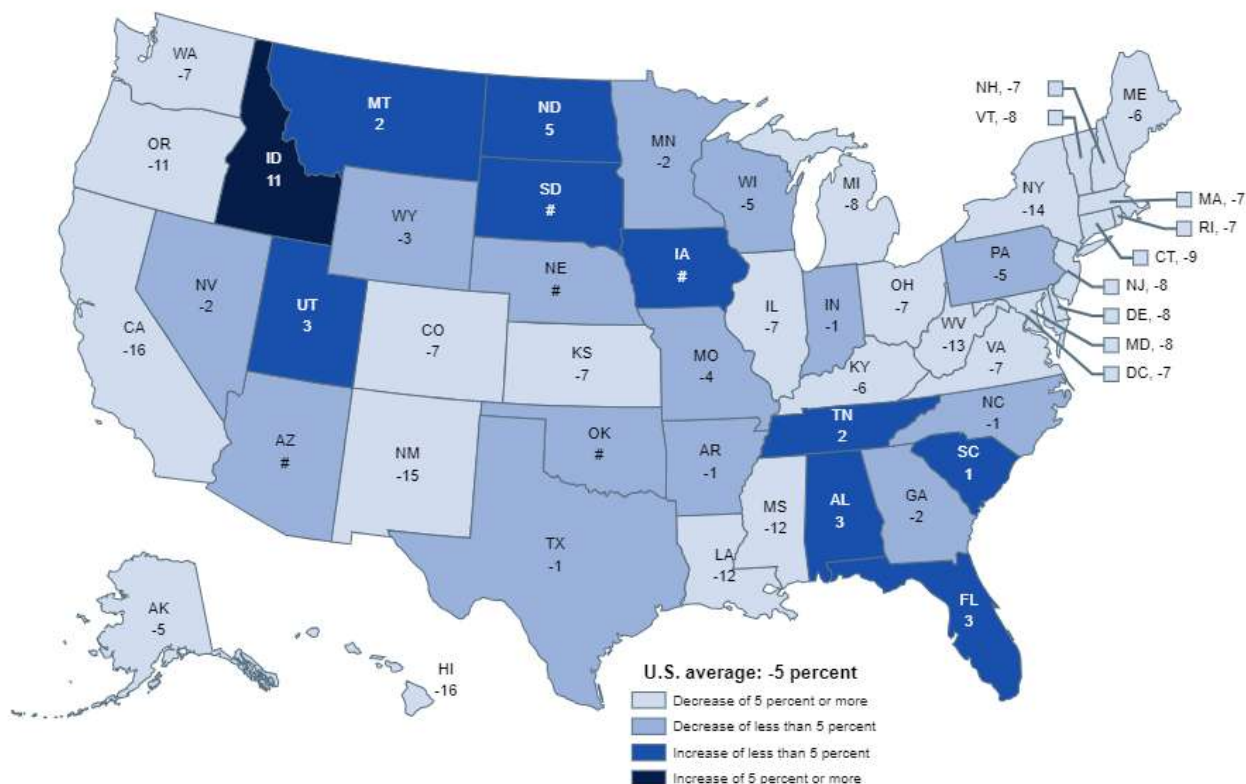
NOTE: U.S. average is for the 50 states and the District of Columbia. Data include both traditional public schools and public charter schools. Includes imputations for nonreported prekindergarten enrollment in California and Oregon for fall 2022. Figures are plotted based on unrounded data.

SOURCE: U.S. Department of Education, National Center for Education Statistics, Common Core of Data (CCD), "State Nonfiscal Survey of Public Elementary/Secondary Education," 2012-13 and 2022-23. Department of Defense Education Activity (DoDEA) Data Center, Enrollment Data, 2012 and 2022, retrieved December 12, 2022, from <https://www.dodea.edu/datacenter/enrollment.cfm>. See *Digest of Education Statistics 2023*, table 203.20.

Lakota Local School District

The figure below illustrates the projected change in Pre-K-12 public school enrollment from the 2022-23 to the 2031-32 school year. Growth is expected in only 10 states over this time period. Ohio is projected to experience a decrease of 7 percent.

Figure 3. Projected percentage change in public elementary and secondary school enrollment, by state: Fall 2022 to fall 2031



Rounds to zero.

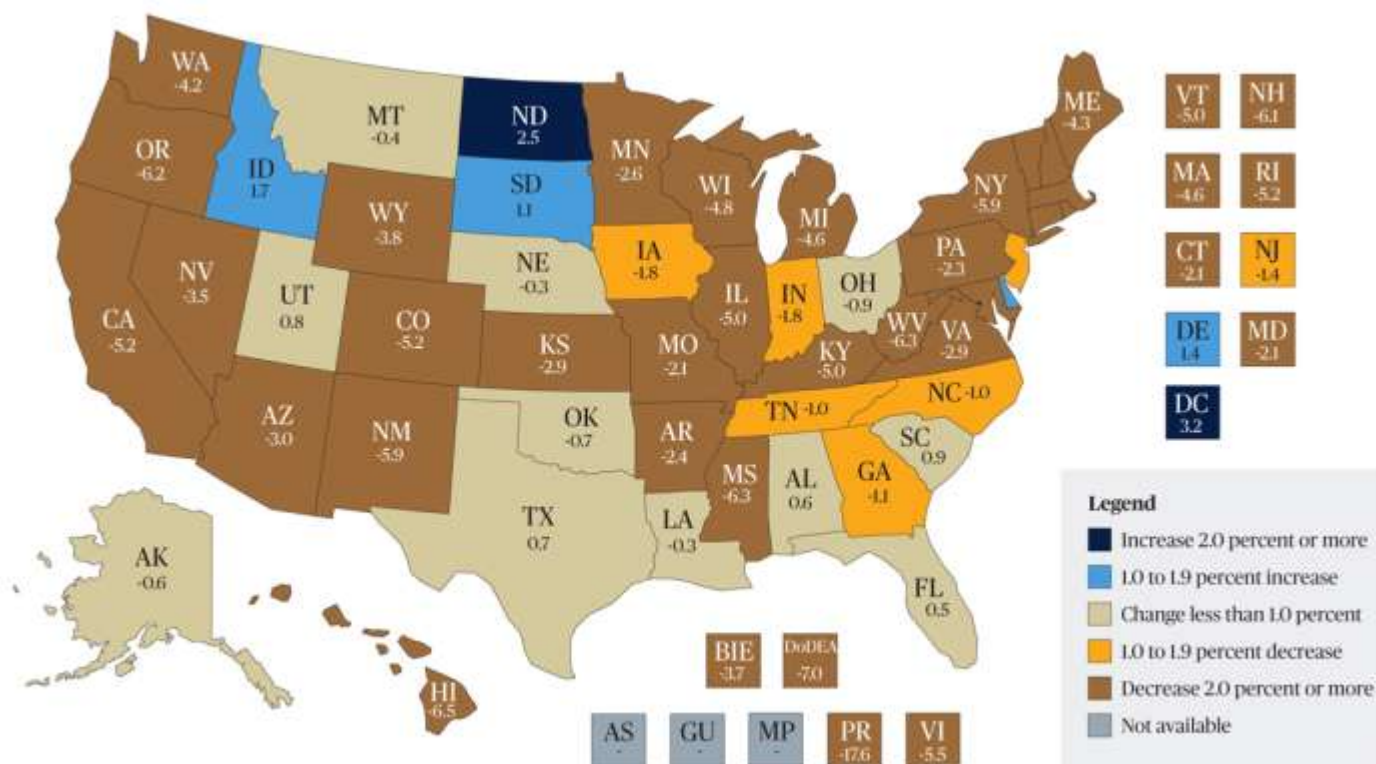
NOTE: U.S. average is for the 50 states and the District of Columbia. Projected enrollment data are not available for the other U.S. jurisdictions. Data include both traditional public schools and public charter schools. Includes imputations for nonreported prekindergarten enrollment in California and Oregon for fall 2022. Projections in this figure were calculated after the onset of the coronavirus pandemic and take into account the expected impacts of the pandemic. Projections for fall 2023 through fall 2031 are based on historical data through fall 2021, only. Figures are plotted based on unrounded data.

SOURCE: U.S. Department of Education, National Center for Education Statistics, Common Core of Data (CCD), "State Nonfiscal Survey of Public Elementary/Secondary Education," 2022-23; and State Public Elementary and Secondary Enrollment Projection Model, through 2031. See *Digest of Education Statistics 2023*, table 203.20.

Lakota Local School District

The figure below illustrates the change in Pre-K-12 public school enrollment from the 2019-20 to the 2023-24 school year. Only 4 states and the District of Columbia saw an increase of 1% or more during this time. Ohio experienced a decrease in enrollment of less than 1 percent.

Figure 1: Percent Change in Public School Enrollment Between Fall 2019 and Fall 2023



- Not available

NOTE: Includes imputations for nonreported prekindergarten enrollment in California in 2019 and California and Oregon in 2023.

SOURCE: U.S. Department of Education, National Center for Education Statistics, Common Core of Data (CCD), "State Nonfiscal Survey of Public Elementary/Secondary Education," 1990-91 through 2023-24. Department of Defense Education Activity (DoDEA) Data Center, Enrollment Data, Fall 2011 through Fall 2023, retrieved November 16, 2023 from <https://www.dodea.edu/education/research-accountability-and-evaluation/enrollment-management>. See Digest of Education Statistics 2024, table 203.20, https://nces.ed.gov/programs/digest/d24/tables/dt24_203.20.asp.

Lakota Local School District

From 2015-16 to 2024-25, public school enrollment declined by 115,310 students or approximately 6% statewide. In 2021-22, there was a slight uptick of 5,810 or less than 0.5 percent.

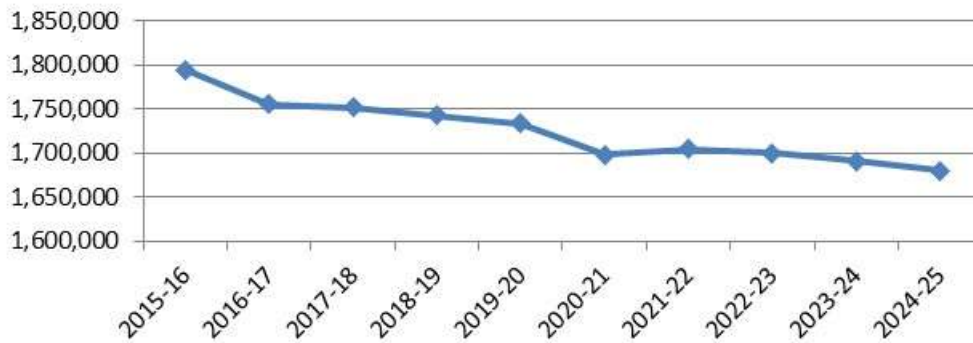
Ohio Public School Enrollment 2015-16 - 2024-25

| Year | October Headcount* |
|---------|--------------------|
| 2015-16 | 1,795,339 |
| 2016-17 | 1,755,552 |
| 2017-18 | 1,751,888 |
| 2018-19 | 1,742,715 |
| 2019-20 | 1,733,911 |
| 2020-21 | 1,698,925 |
| 2021-22 | 1,704,735 |
| 2022-23 | 1,699,957 |
| 2023-24 | 1,691,726 |
| 2024-25 | 1,680,029 |

Source: Ohio Department of Education & Workforce

*includes grades K-12 and ungraded

Ohio Public School Enrollment



Lakota Local School District

From 2015-16 to 2024-25, non-public school enrollment increased by 6,703 students or approximately 4 percent. From 2020-21 to 2024-25, non-public school enrollment has increased by over 18,000 students or approximately 11 percent.

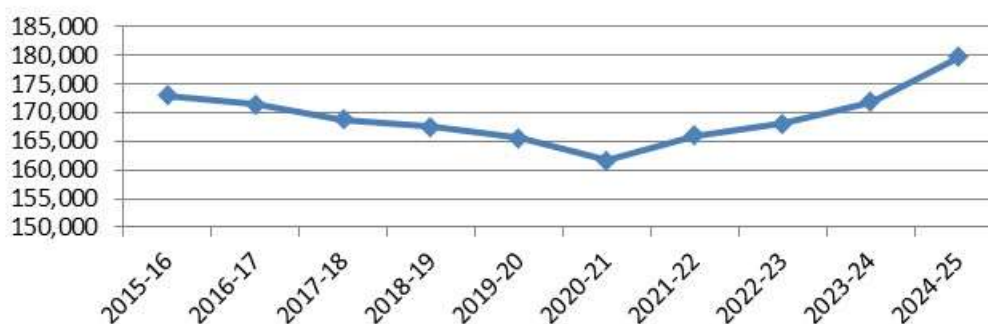
Ohio Chartered Non-Public School Enrollment 2015-16 - 2024-25

| Year | October ADM* |
|---------|--------------|
| 2015-16 | 172,990 |
| 2016-17 | 171,426 |
| 2017-18 | 168,857 |
| 2018-19 | 167,558 |
| 2019-20 | 165,511 |
| 2020-21 | 161,664 |
| 2021-22 | 166,013 |
| 2022-23 | 168,111 |
| 2023-24 | 171,830 |
| 2024-25 | 179,693 |

Source: Ohio Department of Education & Workforce

*includes grades K-12

Ohio Non-Public School Enrollment



Lakota Local School District

Out of 607 school districts, only 92 (or approximately 15%) gained enrollment in grades K - 12 from the 2014-15 to the 2024-25 school year. Please note 5 districts had either 0 students in 2014-15 or in 2024-25 and were not included in the count.

Of the 515 school districts who lost enrollment, 58 (or approximately 13%) lost less than 5 percent, and 118 districts (or approximately 23%) lost between 5 and 10 percent. Approximately 33% (or 172 districts) lost between 11 and 20 percent, and approximately 32% (or 167 districts) lost more than 20 percent.

Of those districts that gained enrollment, 39 (or approximately 42%) increased by less than 5 percent, and 22 (or approximately 24%) increased between 5 and 10 percent. Twenty-three districts (or approximately 25%) increased between 10 and 20%, and 8 districts (or approximately 9%) increased over 20 percent.

Analyzing enrollment from a county perspective, only 10 of the 88 counties in Ohio gained K – 12 enrollment from the 2014-15 to the 2024-25 school year. Delaware County gained approximately 17%, while the rest gained approximately 5% or less.

| County | 2024-25 K-12 Total | 2015-16 K-12 Total | Difference | % Change |
|-----------|--------------------|--------------------|------------|----------|
| Delaware | 35,030 | 30,023 | 5,007 | 16.7% |
| Seneca | 6,493 | 6,170 | 323 | 5.2% |
| Licking | 27,264 | 25,977 | 1,287 | 5.0% |
| Fairfield | 25,361 | 24,251 | 1,110 | 4.6% |
| Union | 7,881 | 7,679 | 202 | 2.6% |
| Mercer | 7,951 | 7,754 | 197 | 2.5% |
| Warren | 36,645 | 35,942 | 703 | 2.0% |
| Pickaway | 9,234 | 9,104 | 130 | 1.4% |
| Franklin | 169,025 | 167,801 | 1,224 | 0.7% |
| Madison | 6,450 | 6,438 | 12 | 0.2% |

Clinton County had the highest percentage loss of students at 25 percent. Fifty-six percent of the counties (49 total) experienced a decline of greater than 10 percent. The map on the following page illustrates the gain/loss for each county from the 2014-15 to the 2024-25 school year.

ENROLLMENT PROJECTION METHODOLOGIES

When projecting future enrollments, it is vital to track the number of births, the patterns of enrollment, the amount of new housing activity, and the change in household composition.

In addition, any of the following factors could cause a significant change in projected student enrollments:

- ▶ Boundary adjustments
- ▶ New school openings
- ▶ Changes/additions in program offerings
- ▶ Preschool programs
- ▶ Change in grade configuration
- ▶ Interest rates/unemployment shifts
- ▶ Magnet/charter/private school opening or closure
- ▶ Zoning changes
- ▶ Unplanned new housing activity
- ▶ Planned, but not built, housing

Obviously, certain factors can be gauged and planned for far better than others. For instance, it may be relatively straightforward to gather housing data from local builders regarding the total number of lots in a planned subdivision and calculate the potential student yield. However, planning for changes in the unemployment rate, and how these may either boost or reduce public school enrollment, proves more difficult. In any case, it is essential to gather a wide variety of information in preparation for producing enrollment projections.

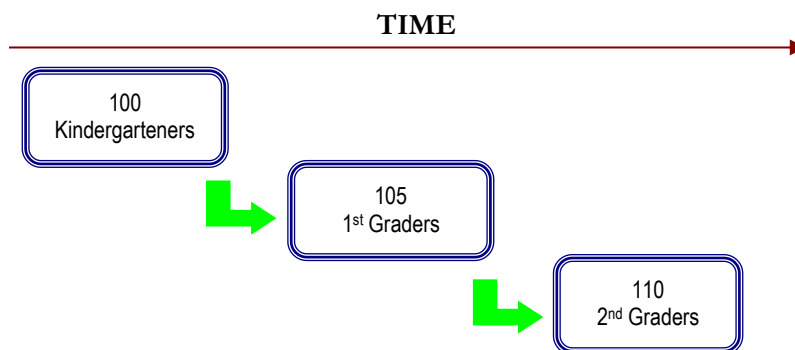
When looking ahead at a school district's enrollment over the next two, five, or ten years, it is helpful to approach the process from a global perspective. For example: How many new homes have been constructed each year? How many births have occurred each year in relation to the resident population? Is housing experiencing a turnover – if so, what is the composition of families moving in/out? Are more or less students attending private school or being home-schooled? What new educational policies are in place now that could affect student enrollment figures?

The data sets generated from questions such as these have led to the development of general methodologies to project future student enrollments. They are as follows:

Lakota Local School District

Cohort Survival Method

A cohort is a group of persons [in this case, students]. The cohort survival projection methodology uses previous live birth data and historical student enrollments to “age” a known population or cohort throughout the school grades. For instance, a cohort begins when a group of kindergarteners enrolls in grade K and moves to first grade the following year, second grade the next year, and so on.



A “survival ratio” is developed to track how this group of students grew or shrunk in number as they moved through the grade levels. By determining survival ratios for each grade transition [i.e., 1st to 2nd grade] over a ten-year period of time, patterns emerge and projection ratios can be developed to be used as a multiplier.

For example, if student enrollment has consistently increased from the 8th to the 9th grade over the past ten years, the survival ratios for each year would be greater than 100 percent. Through analysis of the survival ratios, the projection ratio is determined and is multiplied by the current 8th grade to develop a projection for next year’s 9th grade.

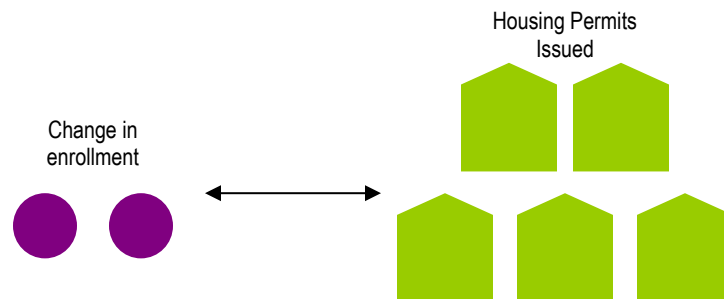
This methodology can be carried through to develop ten years of projection figures. Because there is not a grade cohort to follow for students coming into kindergarten, live birth counts are used to develop a survival ratio. Babies born five years previous to the kindergarten class are compared in number, and a ratio can be developed to project future kindergarten enrollments.

The cohort survival method is useful in areas where population is stable [relatively flat, growing steadily, or declining steadily], and where there have been no significant fluctuations in enrollment, births, and housing patterns from year to year.

Lakota Local School District

Housing

Enrollment projections can also be determined by analyzing the housing data for the areas that make up a school district. Yield factors can be established by comparing the historic change in enrollment from year to year divided by the total number of building or occupancy permits issued. For example, if student enrollment has increased by approximately 100 students each year and approximately 200 building permits have been issued each year for the past ten years, then the yield factor would be approximately .5 students per building permit.



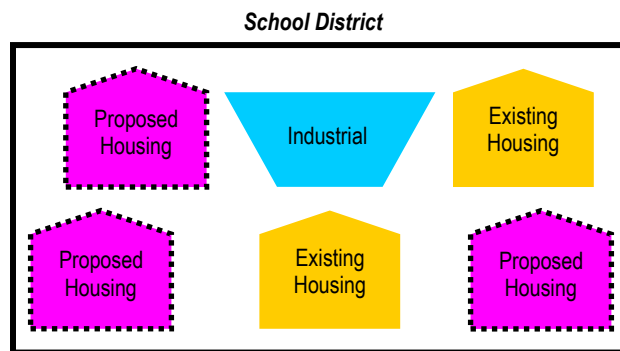
Once yield factors are established, the number of new students per year can be estimated by multiplying the yield factor by the number of projected new housing units. This method is effective when the rate of kindergarten enrollment far exceeds the live birth counts.

If housing demolitions are occurring in a district, these must also be taken into account. For instance, if housing demolitions/withdrawals have increased rapidly over recent years while new housing starts have remained relatively constant over many years, the conclusion may be that some of the new housing starts will simply be replacements for the families displaced by the demolitions. Of course, housing value and household composition would need to be further analyzed to confirm that this is indeed the case. It is possible that enrollment may remain flat or decline even though there is new housing occurring in the area.

Lakota Local School District

Land-Saturation Analysis

Housing data also drives the land-saturation analysis enrollment methodology. In areas where there is a high rate of development and the future development patterns in the area are clear, a “build-out” scenario can be developed. The scenario takes into consideration the remaining acreage to be developed, planned rate of completion, zoning policies, density per acre, type of housing, and ratios of school-age children per household type. This method is particularly useful in areas experiencing rapid growth.



Geographic Information Systems

While not a methodology, the need for better tools and easier manipulation of data has led to a new industry standard in planning – GIS [Geographic Information Systems]. GIS technology allows school districts to quickly analyze countless data sets including birth data, housing information, and enrollment statistics.

When paired with enrollment projections, GIS becomes an invaluable information-management and decision-making tool. Often, county or city offices are already implementing GIS technology and data can be shared and expanded among these organizations in the district. GIS tables and maps are included within this report illustrating population, age, and income estimates and projections.

The cohort survival was the primary method used in the development of the enrollment projections for the Lakota Local School District.

Lakota Local School District

HISTORICAL ENROLLMENT

Over the past ten years, student enrollment in the Lakota Local School District has increased by 775 students in grades Pre-K – 12, including ungraded, career technical, and full-time JVS students. Total enrollment for the 2025-26 school year is 17,249 students.

The approximate percentages of mainstreamed special education students [Pre-K – 12] for the current school year are as follows:

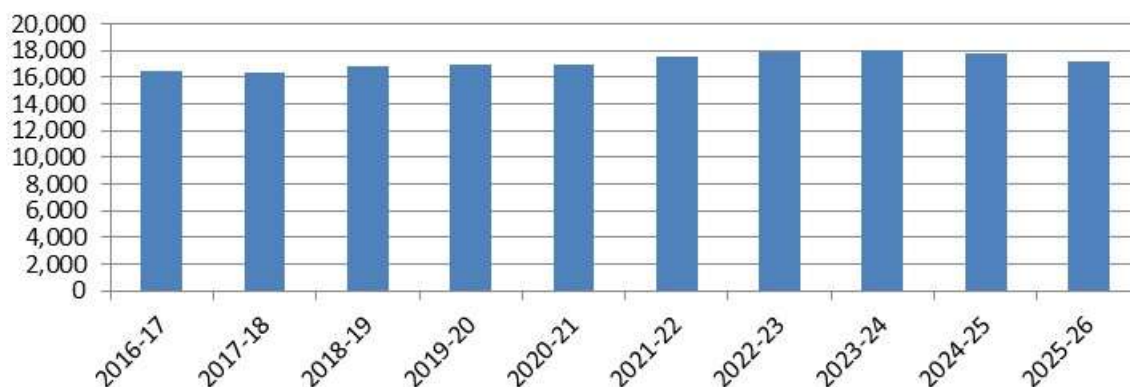
- Pre-K – 100%
- K-2 – <1%
- 3-6 – <1%
- 7-8 – <1%
- 9-12 – <1%

The approximate percentages of self-contained special education students [Pre-K – 12] for the current school year are as follows:

- Pre-K – 0%
- K-2 – 1%
- 3-6 – 2%
- 7-8 – 3%
- 9-12 – 3%

The following graph illustrates the District’s Pre-K – 12 enrollment history from 2016-17 through 2025-26.

**Lakota Local School District
Historical Enrollment**



Lakota Local School District

The following tables illustrate the District's enrollment history from 2016-17 through 2025-26.

**Lakota Local School District
Historical Enrollment**

| Grade | 2016-17 | 2017-18 | 2018-19 | 2019-20 | 2020-21 | 2021-22 | 2022-23 | 2023-24 | 2024-25 | 2025-26 |
|-----------------------|---------|---------|---------|---------|---------|---------|---------|---------|---------|---------|
| Pre-K (regular)* | 159 | 150 | 145 | 152 | 132 | 219 | 214 | 179 | 114 | 93 |
| Pre-K (special needs) | 139 | 143 | 129 | 156 | 239 | 293 | 305 | 333 | 263 | 197 |
| K | 938 | 1,072 | 1,291 | 1,236 | 1,146 | 1,238 | 1,263 | 1,199 | 1,168 | 1,073 |
| 1 | 1,056 | 1,072 | 1,204 | 1,351 | 1,272 | 1,262 | 1,334 | 1,319 | 1,245 | 1,219 |
| 2 | 1,190 | 1,081 | 1,115 | 1,232 | 1,364 | 1,302 | 1,285 | 1,346 | 1,301 | 1,264 |
| 3 | 1,149 | 1,214 | 1,160 | 1,154 | 1,242 | 1,371 | 1,356 | 1,313 | 1,341 | 1,305 |
| 4 | 1,300 | 1,164 | 1,238 | 1,172 | 1,178 | 1,300 | 1,406 | 1,380 | 1,312 | 1,363 |
| 5 | 1,211 | 1,322 | 1,195 | 1,287 | 1,213 | 1,236 | 1,338 | 1,446 | 1,385 | 1,330 |
| 6 | 1,338 | 1,233 | 1,344 | 1,265 | 1,332 | 1,255 | 1,255 | 1,362 | 1,446 | 1,400 |
| 7 | 1,321 | 1,316 | 1,279 | 1,389 | 1,285 | 1,365 | 1,318 | 1,278 | 1,362 | 1,455 |
| 8 | 1,305 | 1,336 | 1,339 | 1,315 | 1,408 | 1,326 | 1,382 | 1,338 | 1,302 | 1,367 |
| 9 | 1,319 | 1,261 | 1,343 | 1,300 | 1,291 | 1,507 | 1,401 | 1,428 | 1,346 | 1,270 |
| 10 | 1,370 | 1,320 | 1,300 | 1,390 | 1,332 | 1,289 | 1,478 | 1,367 | 1,388 | 1,292 |
| 11 | 1,140 | 1,284 | 1,199 | 1,181 | 1,213 | 1,198 | 1,171 | 1,337 | 1,230 | 1,228 |
| 12 | 1,153 | 1,102 | 1,244 | 1,171 | 1,141 | 1,222 | 1,176 | 1,176 | 1,309 | 1,112 |
| Pre-K - 12 Total | 16,088 | 16,070 | 16,525 | 16,751 | 16,788 | 17,383 | 17,682 | 17,801 | 17,512 | 16,968 |
| Ungraded | 35 | 51 | 51 | 0 | 0 | 0 | 0 | 0 | 0 | 21 |
| Career Tech Off-Site | 0 | 0 | 0 | 0 | 0 | 0 | 0 | 0 | 5 | 17 |
| JVS Full-Time | 351 | 245 | 210 | 193 | 218 | 217 | 243 | 250 | 250 | 243 |
| Grand Total | 16,474 | 16,366 | 16,786 | 16,944 | 17,006 | 17,600 | 17,925 | 18,051 | 17,767 | 17,249 |

Source: Ohio Department of Education & Workforce, October Head Count; Lakota Local School District

**Lakota Local School District
Historical Enrollment by Grade Group**

| Grade | 2016-17 | 2017-18 | 2018-19 | 2019-20 | 2020-21 | 2021-22 | 2022-23 | 2023-24 | 2024-25 | 2025-26 |
|-----------------------|---------|---------|---------|---------|---------|---------|---------|---------|---------|---------|
| Pre-K (special needs) | 139 | 143 | 129 | 156 | 239 | 293 | 305 | 333 | 263 | 197 |
| K - 2 | 3,184 | 3,225 | 3,610 | 3,819 | 3,782 | 3,802 | 3,882 | 3,864 | 3,714 | 3,556 |
| 3 - 6 | 4,998 | 4,933 | 4,937 | 4,878 | 4,965 | 5,162 | 5,355 | 5,501 | 5,484 | 5,398 |
| 7 - 8 | 2,626 | 2,652 | 2,618 | 2,704 | 2,693 | 2,691 | 2,700 | 2,616 | 2,664 | 2,822 |
| 9 | 1,319 | 1,261 | 1,343 | 1,300 | 1,291 | 1,507 | 1,401 | 1,428 | 1,346 | 1,270 |
| 10 - 12 | 3,663 | 3,706 | 3,743 | 3,742 | 3,686 | 3,709 | 3,825 | 3,880 | 3,927 | 3,632 |
| Pre-K - 12 Total | 15,929 | 15,920 | 16,380 | 16,599 | 16,656 | 17,164 | 17,468 | 17,622 | 17,398 | 16,875 |
| Ungraded | 35 | 51 | 51 | 0 | 0 | 0 | 0 | 0 | 0 | 21 |
| Career Tech Off-Site | 0 | 0 | 0 | 0 | 0 | 0 | 0 | 0 | 5 | 17 |
| Grand Total | 15,964 | 15,971 | 16,431 | 16,599 | 16,656 | 17,164 | 17,468 | 17,622 | 17,403 | 16,913 |

Source: Ohio Department of Education & Workforce, October Head Count; Lakota Local School District

*regular Pre-K and full-time JVS enrollments are not included in grade group table above or in the projected enrollment figures

Lakota Local School District

COMMUNITY SCHOOL ENROLLMENT

From 2014-15 to 2023-24, community school enrollment decreased by approximately 7% from 120,200 students in 381 community schools to 116,980 students in 336 community schools. However, there was an increase of 11% in enrollment from the 2019-20 to the 2020-21 school year. Enrollment declined by over 2,000 students from 2020-21 to 2021-22, but has since increased.

State of Ohio
Community School Enrollment (Pre-K - 12)

| Grade | 2014-15 | 2015-16 | 2016-17 | 2017-18 | 2018-19 | 2019-20 | 2020-21 | 2021-22 | 2022-23 | 2023-24 |
|-------------|---------|---------|---------|---------|---------|---------|---------|---------|---------|---------|
| Grand Total | 120,200 | 117,282 | 110,961 | 104,430 | 102,625 | 102,654 | 113,900 | 111,377 | 112,238 | 116,980 |

Source: Ohio Department of Education & Workforce, Ohio Community Schools Annual Report December 2024

Ohio Community School Enrollment

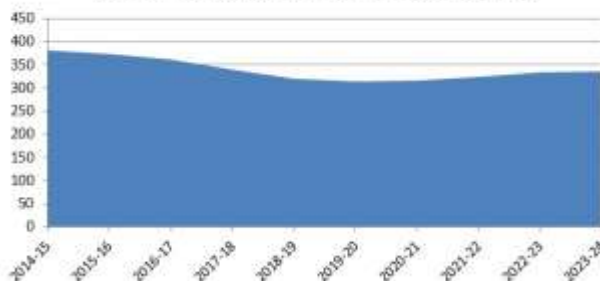


State of Ohio
Number of Community Schools

| Grade | 2014-15 | 2015-16 | 2016-17 | 2017-18 | 2018-19 | 2019-20 | 2020-21 | 2021-22 | 2022-23 | 2023-24 |
|-------------|---------|---------|---------|---------|---------|---------|---------|---------|---------|---------|
| Grand Total | 381 | 373 | 362 | 340 | 320 | 313 | 315 | 324 | 334 | 336 |

Source: Ohio Department of Education & Workforce, Ohio Community Schools Annual Report December 2024

Number of Community Schools in Ohio



Lakota Local School District

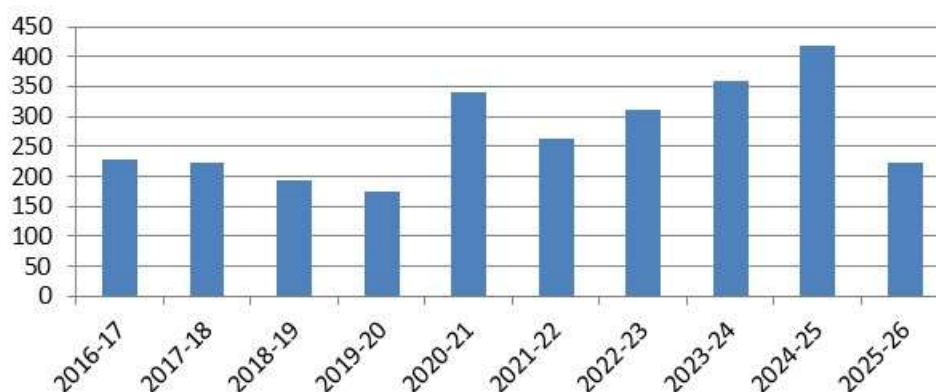
Since 2016-17, the number of Lakota Local School District students attending community schools has fluctuated between 174 and 418 students. Enrollment of Lakota Local School District students attending community schools should be closely monitored as it may have a significant impact on District enrollment in the future.

**Lakota Local School District
Community School Enrollment**

| Grade | 2016-17 | 2017-18 | 2018-19 | 2019-20 | 2020-21 | 2021-22 | 2022-23 | 2023-24 | 2024-25 | 2025-26 |
|--------------------|------------|------------|------------|------------|------------|------------|------------|------------|------------|------------|
| Pre-K | 0 | 0 | 0 | 0 | 0 | 0 | 0 | 0 | 0 | 0 |
| K | 5 | 8 | 8 | 7 | 34 | 17 | 36 | 31 | 35 | 1 |
| 1 | 7 | 3 | 6 | 5 | 23 | 8 | 24 | 22 | 23 | 16 |
| 2 | 5 | 5 | 4 | 5 | 20 | 11 | 18 | 22 | 29 | 15 |
| 3 | 7 | 7 | 7 | 3 | 22 | 10 | 14 | 16 | 26 | 17 |
| 4 | 11 | 6 | 9 | 10 | 16 | 13 | 15 | 22 | 21 | 18 |
| 5 | 7 | 15 | 7 | 9 | 27 | 15 | 20 | 23 | 20 | 17 |
| 6 | 15 | 10 | 10 | 7 | 20 | 22 | 12 | 28 | 27 | 16 |
| 7 | 13 | 17 | 11 | 11 | 21 | 14 | 19 | 13 | 36 | 18 |
| 8 | 16 | 20 | 11 | 12 | 26 | 23 | 30 | 34 | 23 | 18 |
| 9 | 29 | 24 | 31 | 19 | 34 | 29 | 29 | 42 | 36 | 15 |
| 10 | 31 | 37 | 22 | 33 | 29 | 38 | 30 | 37 | 42 | 19 |
| 11 | 31 | 30 | 36 | 24 | 35 | 29 | 38 | 37 | 56 | 24 |
| 12 | 52 | 41 | 31 | 29 | 34 | 33 | 25 | 33 | 44 | 28 |
| Ungraded | 0 | 0 | 0 | 0 | 0 | 0 | 0 | 0 | 0 | 0 |
| Grand Total | 229 | 223 | 193 | 174 | 341 | 262 | 310 | 360 | 418 | 222 |

Source: Ohio Department of Education & Workforce, October Head Count; Lakota Local School District

**Lakota Local School District
Students Attending Community Schools**



Lakota Local School District

OPEN ENROLLMENT

Since 2016-17, the number of Lakota Local School District students “open enrolling” into the District has decreased from 317 to 128 students with some fluctuation. The number of students “open enrolling” out of the District has decreased from 208 to 198 students with some fluctuation. Significant changes in the number of students “open enrolling” into or out of the District from year to year can impact enrollment projections and should be monitored.

Lakota Local School District
Open Enrollment - IN

| Grade | 2016-17 | 2017-18 | 2018-19 | 2019-20 | 2020-21 | 2021-22 | 2022-23 | 2023-24 | 2024-25 | 2025-26 |
|--------------------|------------|------------|------------|------------|------------|------------|------------|------------|------------|------------|
| Pre-K | 1 | 1 | 0 | 0 | 0 | 0 | 1 | 1 | 0 | 0 |
| K | 19 | 16 | 10 | 13 | 13 | 12 | 14 | 16 | 6 | 7 |
| 1 | 17 | 19 | 21 | 15 | 21 | 10 | 13 | 22 | 6 | 4 |
| 2 | 22 | 31 | 22 | 21 | 18 | 22 | 12 | 20 | 8 | 7 |
| 3 | 25 | 35 | 28 | 17 | 18 | 17 | 20 | 20 | 8 | 5 |
| 4 | 32 | 27 | 25 | 27 | 20 | 19 | 10 | 23 | 5 | 8 |
| 5 | 27 | 44 | 29 | 26 | 24 | 18 | 22 | 16 | 4 | 3 |
| 6 | 24 | 27 | 51 | 21 | 26 | 23 | 19 | 32 | 4 | 4 |
| 7 | 18 | 30 | 37 | 40 | 21 | 24 | 24 | 22 | 18 | 5 |
| 8 | 16 | 29 | 35 | 39 | 38 | 28 | 30 | 27 | 18 | 13 |
| 9 | 33 | 15 | 38 | 36 | 46 | 47 | 33 | 32 | 19 | 11 |
| 10 | 22 | 45 | 36 | 43 | 45 | 43 | 53 | 39 | 31 | 18 |
| 11 | 33 | 33 | 50 | 37 | 51 | 46 | 44 | 47 | 34 | 23 |
| 12 | 28 | 45 | 40 | 55 | 44 | 51 | 53 | 46 | 43 | 20 |
| Ungraded | 0 | 0 | 0 | 0 | 0 | 0 | 0 | 0 | 0 | 0 |
| Grand Total | 317 | 397 | 422 | 390 | 385 | 360 | 348 | 363 | 204 | 128 |

Source: Ohio Department of Education & Workforce, October Head Count; Lakota Local School District

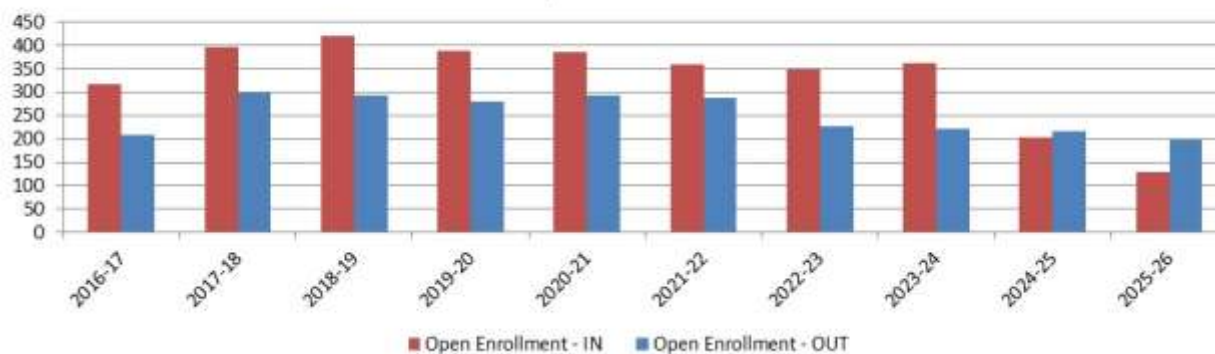
Lakota Local School District

Lakota Local School District Open Enrollment - OUT

| Grade | 2016-17 | 2017-18 | 2018-19 | 2019-20 | 2020-21 | 2021-22 | 2022-23 | 2023-24 | 2024-25 | 2025-26 |
|--------------------|------------|------------|------------|------------|------------|------------|------------|------------|------------|------------|
| Pre-K | 0 | 0 | 0 | 1 | 2 | 1 | 1 | 1 | 0 | 0 |
| K | 22 | 18 | 12 | 10 | 10 | 17 | 6 | 5 | 12 | 4 |
| 1 | 17 | 30 | 18 | 15 | 11 | 15 | 14 | 4 | 7 | 10 |
| 2 | 25 | 23 | 24 | 18 | 21 | 11 | 18 | 12 | 6 | 9 |
| 3 | 8 | 27 | 26 | 21 | 20 | 19 | 14 | 11 | 15 | 7 |
| 4 | 16 | 12 | 22 | 20 | 21 | 16 | 13 | 16 | 12 | 13 |
| 5 | 9 | 20 | 14 | 20 | 20 | 17 | 10 | 9 | 10 | 12 |
| 6 | 14 | 19 | 19 | 13 | 24 | 19 | 13 | 11 | 10 | 9 |
| 7 | 8 | 21 | 22 | 25 | 12 | 28 | 18 | 21 | 15 | 18 |
| 8 | 15 | 15 | 26 | 22 | 28 | 12 | 25 | 21 | 20 | 16 |
| 9 | 9 | 22 | 20 | 26 | 27 | 32 | 10 | 32 | 22 | 18 |
| 10 | 16 | 19 | 26 | 25 | 30 | 26 | 31 | 17 | 31 | 23 |
| 11 | 28 | 28 | 27 | 32 | 34 | 34 | 25 | 30 | 20 | 33 |
| 12 | 21 | 44 | 37 | 33 | 34 | 40 | 28 | 31 | 37 | 26 |
| Ungraded | 0 | 0 | 1 | 0 | 0 | 0 | 0 | 0 | 0 | 0 |
| Grand Total | 208 | 298 | 294 | 281 | 294 | 287 | 226 | 221 | 217 | 198 |

Source: Ohio Department of Education & Workforce, October Head Count; Lakota Local School District

Lakota Local School District Open Enrollment



LIVE BIRTH DATA

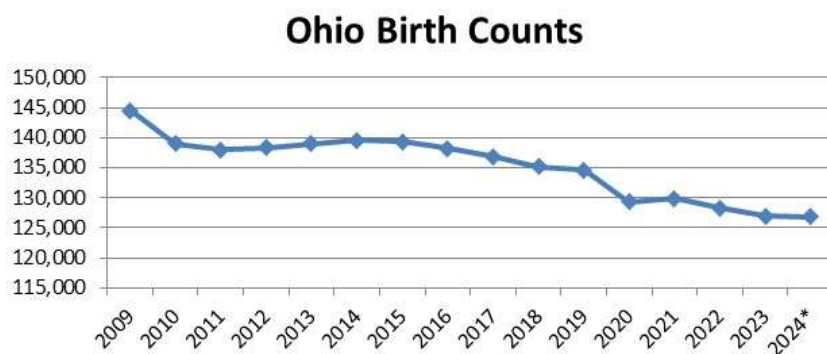
Utilization of live birth data is recommended when projecting future kindergarten enrollments as it provides a helpful overall trend. The live birth counts are used in determining a birth-to-kindergarten survival ratio. This ratio identifies the percentage of children born in a representative area who attend kindergarten in the District five years later. The survival ratios for birth-to-kindergarten as well as grades 1-12 can be found later in this report.

The Ohio Department of Health [ODH] information warehouse provides information about live birth events for Ohio residents. Information about events occurring outside of Ohio to Ohio residents is included. Information about events occurring inside Ohio to non-Ohio residents is not included.

Data is arranged by the residence of the mother. For example, if a mother lives in Powell, Delaware County but delivers her baby in Columbus, Franklin County, the birth is counted in Powell, Delaware County.

Live birth counts are different from live birth rates. The live birth count is the actual number of live births. A birth rate is the number of births per 1,000 women in a specified population group. Birth rates are provided for counties only and for 9 age groups from 10-14 years to 45+ years.

From 2009 to 2011, Ohio births declined by 12,760 and then somewhat leveled off through 2014. Since 2014, births have dropped each year with a slight uptick from 2020 to 2021. From 2019 to 2024, births declined by approximately 6 percent.



Lakota Local School District

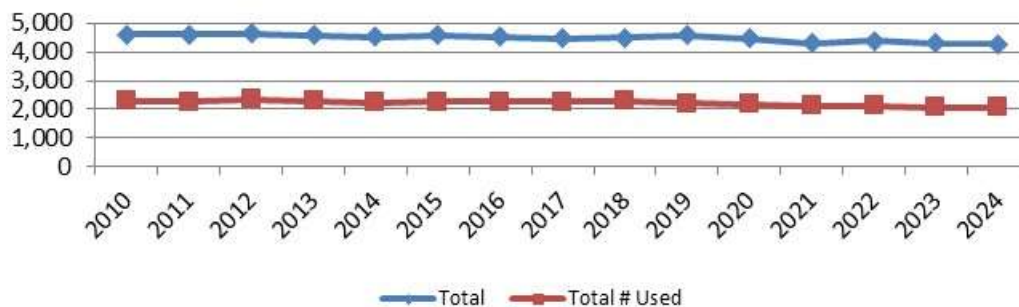
The following table and graph include the live birth counts for 45011, 45044, and 45069 were used for projection purposes.

Lakota Local School District
Live Birth Count by Zip Code
2010-2024

| Year | 45011 | 45014 | 45036 | 45040 | 45044 | 45050 | 45067 | 45069 | 45241 | 45246 | Total | Total # Used |
|------|-------|-------|-------|-------|-------|-------|-------|-------|-------|-------|-------|--------------|
| 2010 | 912 | 557 | 414 | 502 | 810 | 123 | 192 | 578 | 276 | 252 | 4,616 | 2,300 |
| 2011 | 925 | 532 | 431 | 500 | 782 | 150 | 204 | 566 | 257 | 250 | 4,597 | 2,273 |
| 2012 | 964 | 574 | 410 | 468 | 779 | 161 | 164 | 603 | 259 | 244 | 4,626 | 2,346 |
| 2013 | 890 | 566 | 397 | 487 | 800 | 145 | 176 | 588 | 265 | 259 | 4,573 | 2,278 |
| 2014 | 903 | 580 | 399 | 477 | 683 | 168 | 175 | 638 | 262 | 232 | 4,517 | 2,224 |
| 2015 | 884 | 596 | 358 | 489 | 748 | 155 | 192 | 620 | 263 | 266 | 4,571 | 2,252 |
| 2016 | 920 | 564 | 386 | 480 | 737 | 146 | 198 | 601 | 262 | 242 | 4,536 | 2,258 |
| 2017 | 901 | 536 | 353 | 456 | 763 | 142 | 202 | 607 | 278 | 224 | 4,462 | 2,271 |
| 2018 | 891 | 579 | 352 | 474 | 789 | 142 | 169 | 599 | 278 | 221 | 4,494 | 2,279 |
| 2019 | 864 | 596 | 401 | 496 | 742 | 160 | 184 | 592 | 273 | 272 | 4,580 | 2,198 |
| 2020 | 866 | 577 | 373 | 496 | 720 | 160 | 206 | 590 | 251 | 243 | 4,482 | 2,176 |
| 2021 | 827 | 556 | 389 | 474 | 674 | 135 | 162 | 616 | 260 | 210 | 4,303 | 2,117 |
| 2022 | 830 | 568 | 386 | 505 | 698 | 108 | 194 | 595 | 279 | 235 | 4,398 | 2,123 |
| 2023 | 811 | 555 | 356 | 500 | 676 | 144 | 153 | 589 | 273 | 238 | 4,295 | 2,076 |
| 2024 | 788 | 526 | 365 | 497 | 682 | 131 | 194 | 602 | 275 | 223 | 4,283 | 2,072 |

Source: Ohio Department of Health, Bureau of Vital Statistics

Lakota Local School District
Live Birth Count by Zip Code



Lakota Local School District



Lakota Local School District

DEMOGRAPHICS

The Lakota Local School District is comprised of Liberty Township and West Chester Township in Butler County. General demographic data is included in the following tables for the areas located completely or partially in the District.

General Demographic Information

| | Butler County | State of Ohio |
|-------------------------|---------------|---------------|
| Per Capita Income | \$40,027 | \$40,552 |
| Median Household Income | \$81,590 | \$71,389 |
| Persons Below Poverty | 11.8% | 13.3% |

Source: US Census, American Community Survey, 2024 5-Year Estimates

Total Population

| | 2010 Census | 2020 Census |
|-----------------------|-------------|-------------|
| Butler County | 332,807 | 368,130 |
| Liberty Township | 22,819 | 37,259 |
| West Chester Township | 54,895 | 60,958 |

Source: 2010 Census: DEC Summary File 2; 2020 Decennial Census

Also included are block group estimates and projections provided by Esri. Esri uses a time series of estimates from the U.S. Census Bureau that includes the latest estimates and inter-censal estimates adjusted for error of closure. The Census Bureau's time series is consistent, but testing has revealed improved accuracy by using a variety of sources to track county population trends.

Esri also employs a time series of building permits and housing starts plus residential deliveries. Data sources are integrated and then analyzed by Census Block Groups.

Sources of data include:

- ▶ Supplementary Surveys of the Census Bureau
- ▶ Bureau of Labor Statistics' (BLS) Local Area Unemployment Statistics
- ▶ BLS Occupational Employment Statistics
- ▶ *InfoUSA*
- ▶ U.S. Bureau of the Census' Current Population Survey
- ▶ National Planning Association Data Service

Lakota Local School District

Below is a list of definitions as they appear on the U.S. Census Bureau website, to aid in interpretation of the following tables and maps.

Household:

A household includes all the people who occupy a housing unit as their usual place of residence.

Average family size:

A measure obtained by dividing the number of members of families by the total number of families (or family householders).

Family household (Family):

A family includes a householder and one or more people living in the same household who are related to the householder by birth, marriage, or adoption. All people who are related to the householder are regarded as members of his or her family. A family household may contain people not related to the householder, but those people are not included as part of the householder's family in census tabulations. Thus, the number of family households is equal to the number of families, but family households may include more members than do families. A household can contain only one family for purposes of census tabulations. Not all households contain families since a household may comprise a group of unrelated people or one person living alone.

Householder:

The person, or one of the people, in whose name the home is owned, being bought, or rented. If there is no such person present, any household member 15 years old and over can serve as the householder for the purposes of the census. Two types of householders are distinguished: a family householder and a nonfamily householder. A family householder is a householder living with one or more people related to him or her by birth, marriage, or adoption. The householder and all people in the household related to him are family members. A nonfamily householder is a householder living alone or with nonrelatives only.

Lakota Local School District

The following tables illustrate the current estimates and 5-year population projections based on block groups that comprise the state and school district, indicating areas of current and projected growth. The tables have been developed to determine selected age group projections and projections for household income, family size, and total households.

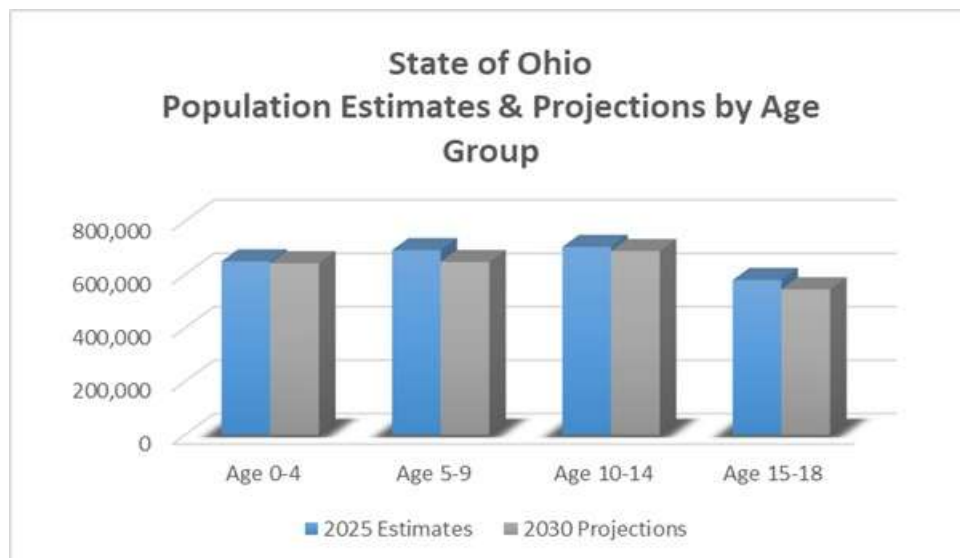
The total population in the State of Ohio is 11,855,695. This population is projected to increase by 51,917 people, or less than 1% over a 5-year period.

The 0-18-year-old population in the State currently totals 2,624,704. This population is projected to decrease by 102,202 children, or approximately 4 percent.

The median age is projected to increase by approximately 2% from 40.5 to 41.4 years of age.

| State of Ohio | 2025 Estimates | 2030 Projections | Change 2025-30 | Change 2025-30 (%) |
|------------------|----------------|------------------|----------------|--------------------|
| Total Population | 11,855,695 | 11,907,612 | 51,917 | 0.4% |
| Age 0-4 | 649,600 | 642,406 | -7,194 | -1.1% |
| Age 5-9 | 691,593 | 647,324 | -44,269 | -6.4% |
| Age 10-14 | 703,671 | 688,157 | -15,514 | -2.2% |
| Age 15-18 | 579,840 | 544,615 | -35,225 | -6.1% |
| Total Age 0-18 | 2,624,704 | 2,522,502 | -102,202 | -3.9% |
| Median Age | 40.5 | 41.4 | 0.9 | 2.2% |

Source: Esri

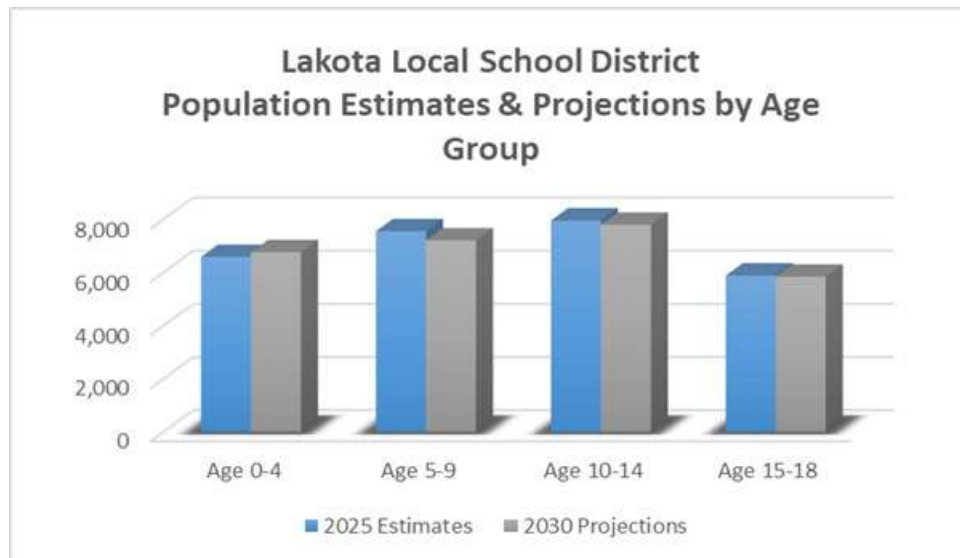


Lakota Local School District

The total population in the District is 108,138. This population is projected to increase by 2,735 people, or approximately 3% over a 5-year period. The 0-18-year-old population in the District currently totals 27,984. This population is projected to decrease by 378 people, or approximately 1 percent. The median age is projected to increase by approximately 1%, from 39.3 to 39.6 years of age.

| Lakota Local School District | 2025 Estimates | 2030 Projections | Change 2025-30 | Change 2025-30 (%) |
|------------------------------|----------------|------------------|----------------|--------------------|
| Total Population | 108,138 | 110,873 | 2,735 | 2.5% |
| Age 0-4 | 6,586 | 6,764 | 178 | 2.7% |
| Age 5-9 | 7,554 | 7,204 | -350 | -4.6% |
| Age 10-14 | 7,955 | 7,797 | -158 | -2.0% |
| Age 15-18 | 5,889 | 5,841 | -48 | -0.8% |
| Total Age 0-18 | 27,984 | 27,606 | -378 | -1.4% |
| Median Age | 39.3 | 39.6 | 0.3 | 0.8% |

Source: Esri



Lakota Local School District

Median and average household incomes in the State are both projected to increase by approximately 12% over a 5-year period. The average family size is projected to stay the same, and the total number of family households is projected to decrease by less than 1 percent.

| State of Ohio | 2025 Estimates | 2030 Projections | Change 2025-30 | Change 2025-30 (%) |
|--------------------------|----------------|------------------|----------------|--------------------|
| Median Household Income | \$71,022 | \$79,764 | \$8,742 | 12.3% |
| Average Household Income | \$100,017 | \$112,180 | \$12,163 | 12.2% |
| Average Family Size | 3.03 | 3.03 | 0.00 | 0.0% |
| Total Family Households | 2,960,120 | 2,959,878 | -242 | 0.1% |

Source: Esri

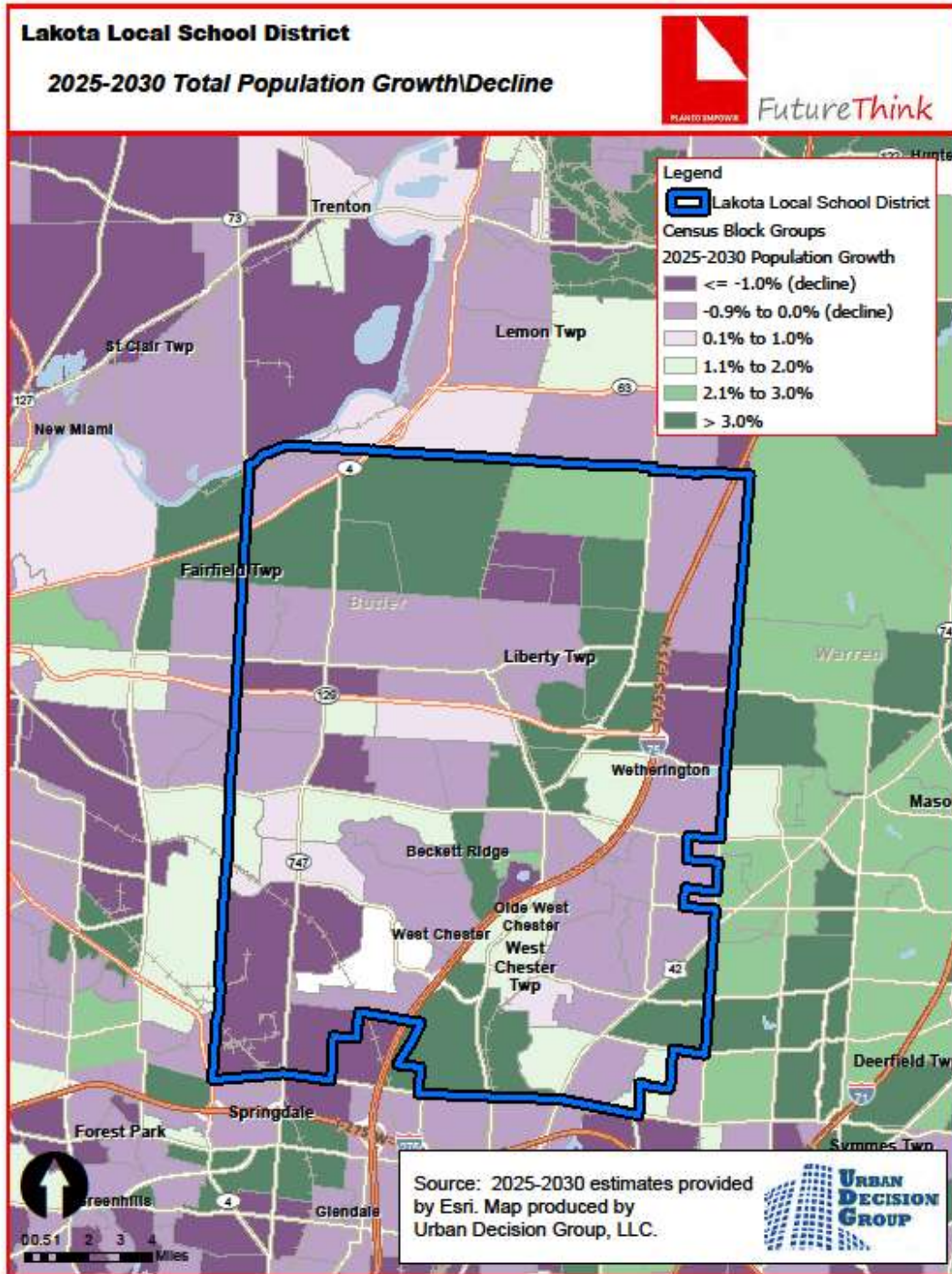
Median and average household incomes in the District are projected to increase by approximately 10% and 11%, respectively over a 5-year period. The average family size is projected to decrease slightly, and the total number of family households is projected to increase by approximately 2 percent.

| Lakota Local School District | 2025 Estimates | 2030 Projections | Change 2025-30 | Change 2025-30 (%) |
|------------------------------|----------------|------------------|----------------|--------------------|
| Median Household Income | \$129,841 | \$143,159 | \$13,318 | 10.3% |
| Average Household Income | \$158,669 | \$175,656 | \$16,987 | 10.7% |
| Average Family Size | 3.27 | 3.26 | -0.01 | -0.3% |
| Total Family Households | 29,298 | 30,001 | 703 | 2.4% |

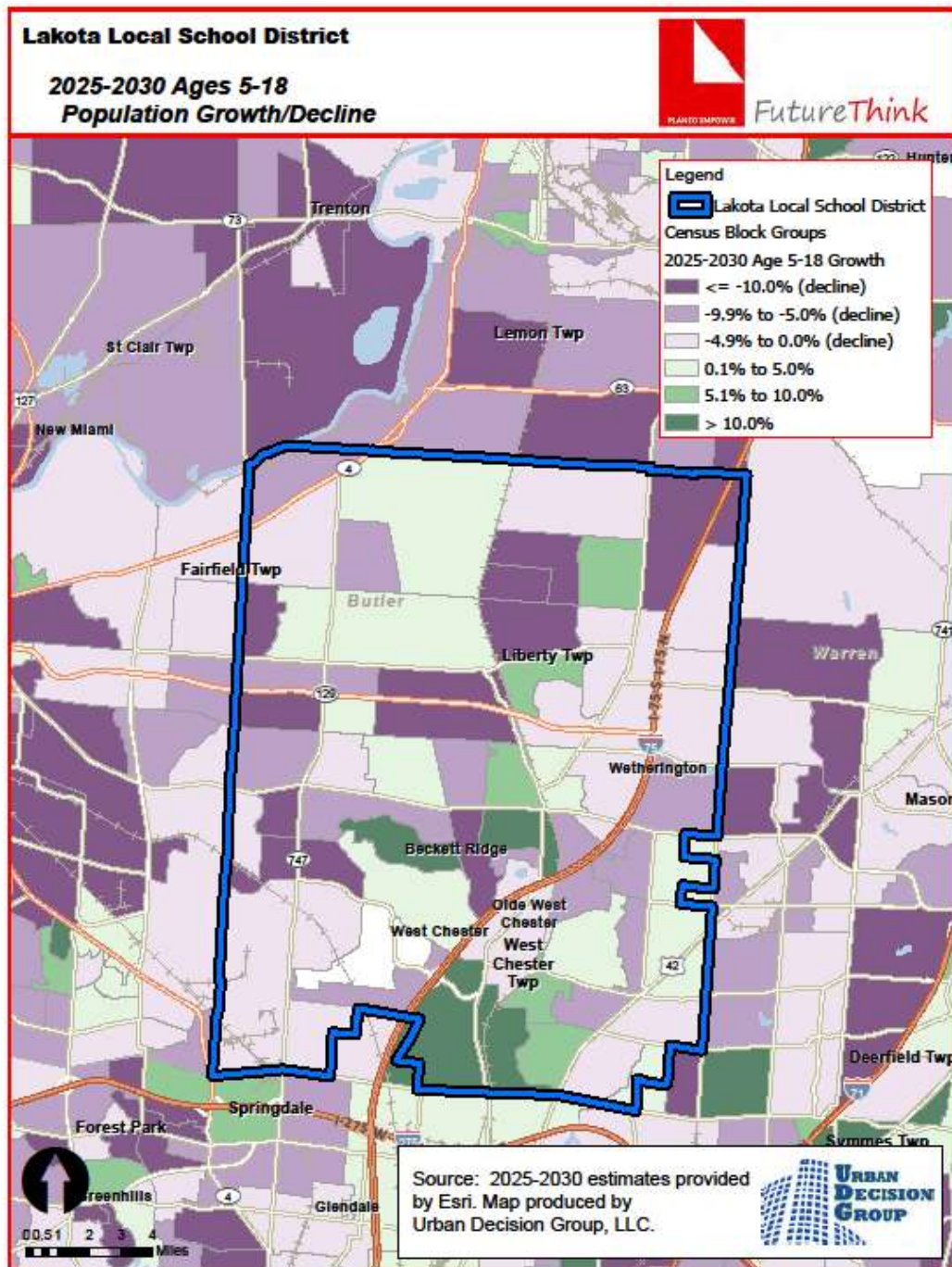
Source: Esri

The maps on the following pages illustrate the data identified in the tables. The color coding identifies areas within the District that may be increasing or decreasing at different rates than others.

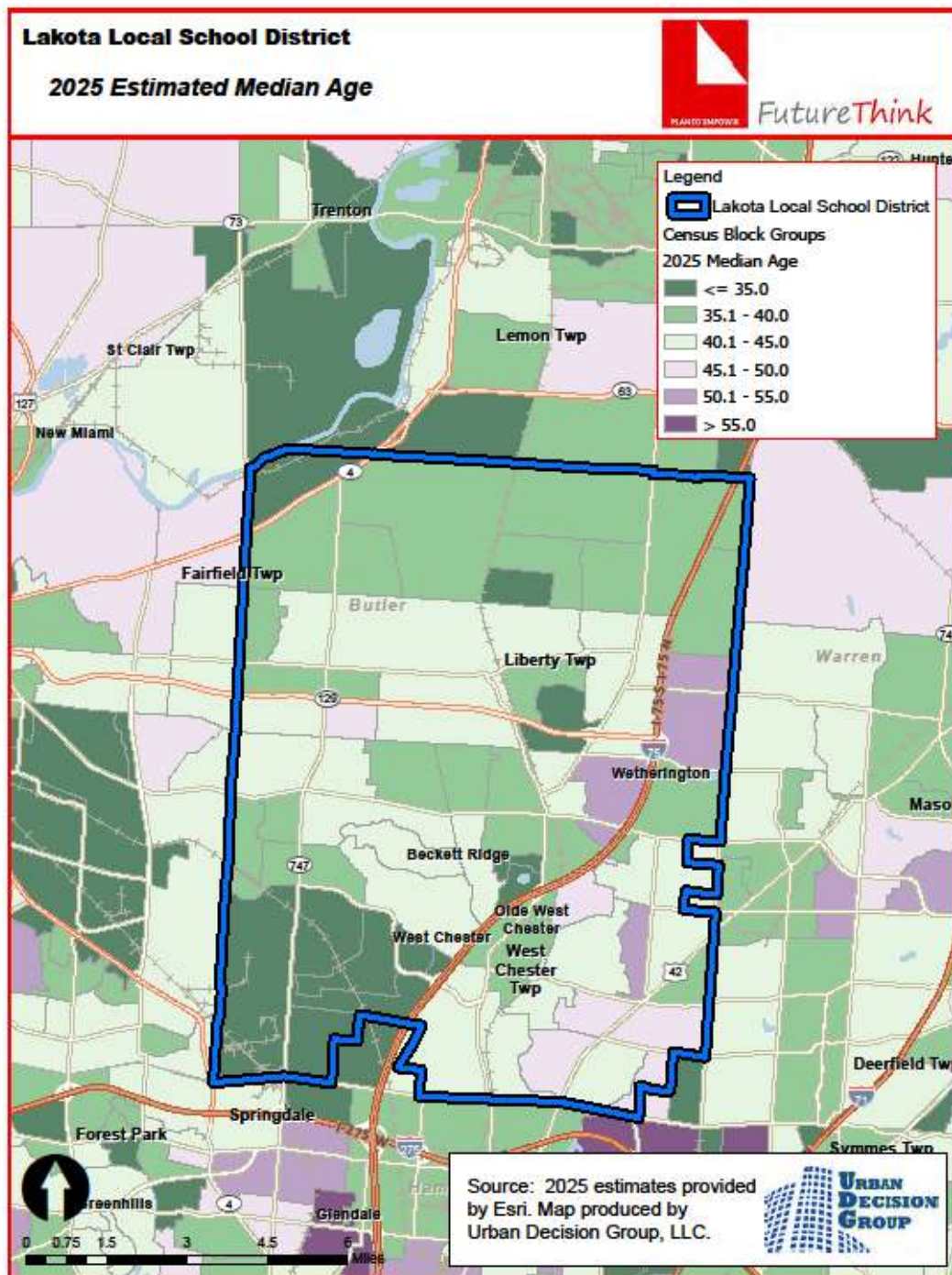
Lakota Local School District



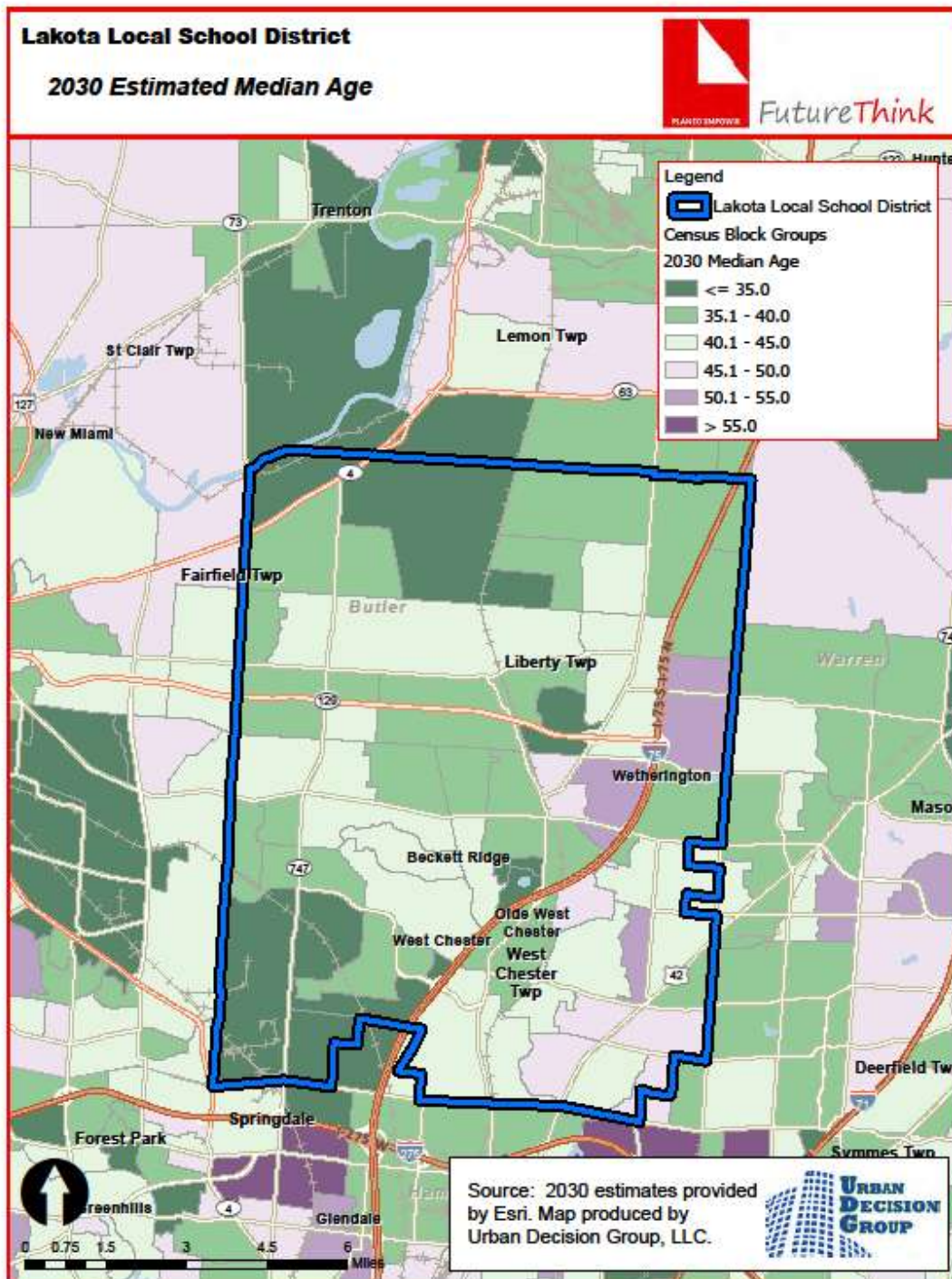
Lakota Local School District



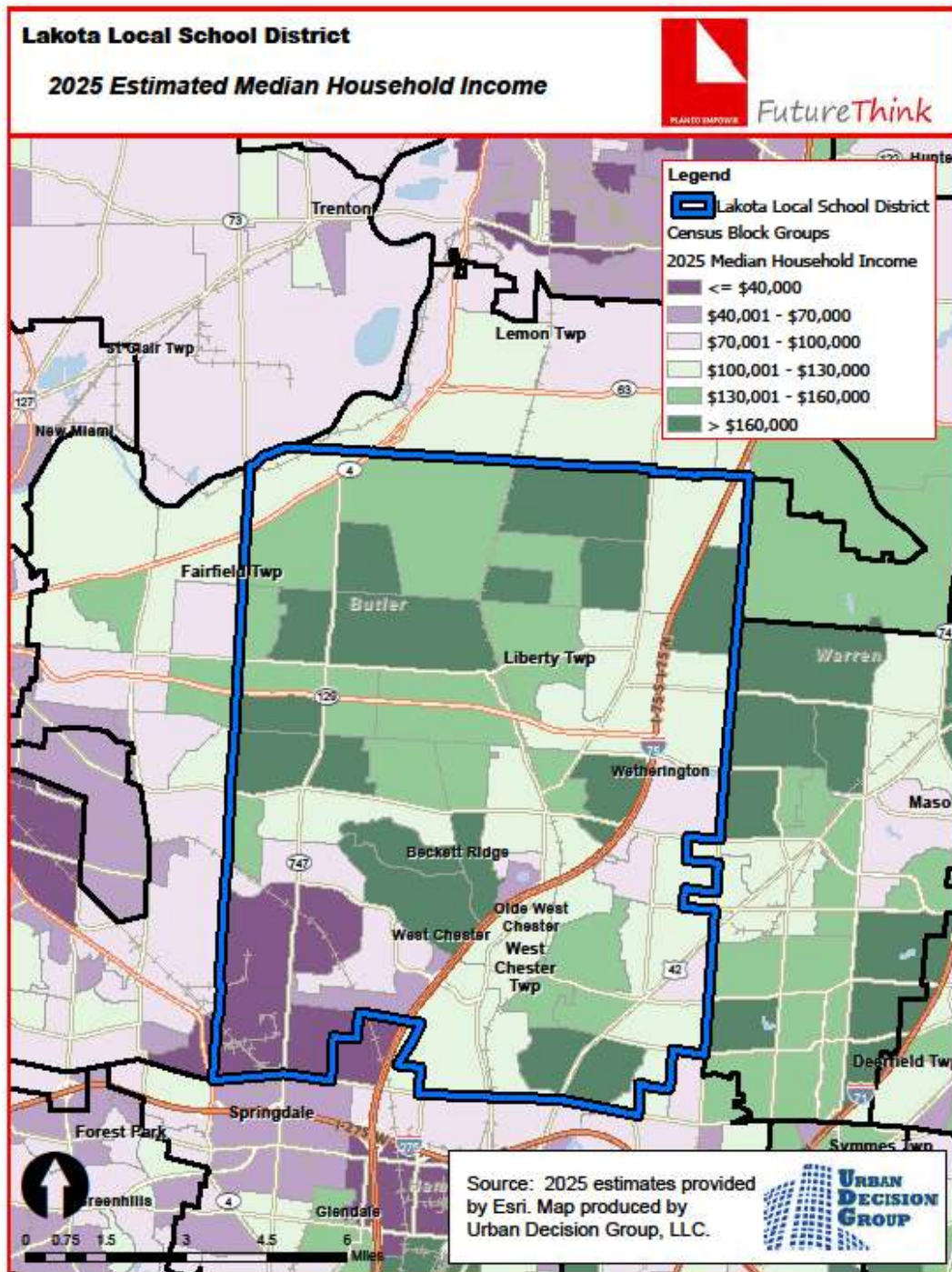
Lakota Local School District



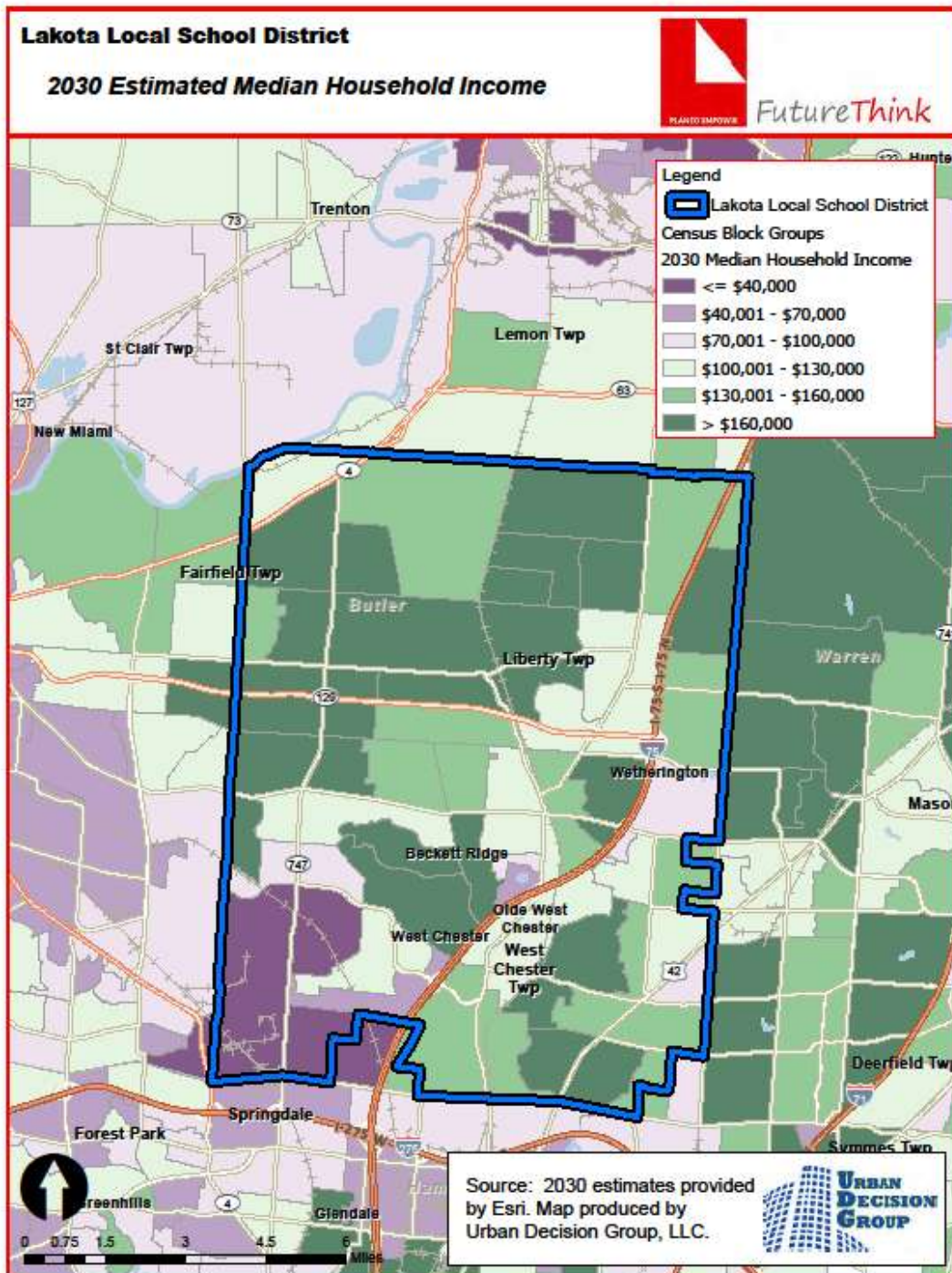
Lakota Local School District



Lakota Local School District



Lakota Local School District



HOUSING INFORMATION

The table below illustrates the number of single-family dwelling building permits issued each year in Butler County.

of Building Permits Issued for Single Family Dwellings

| Year | Butler County |
|-------|---------------|
| 2015 | 591 |
| 2016 | 706 |
| 2017 | 737 |
| 2018 | 694 |
| 2019 | 793 |
| 2020 | 1,134 |
| 2021 | 934 |
| 2022 | 799 |
| 2023 | 577 |
| 2024 | 660 |
| 2025* | 506 |

Source: SOCDs Building Permits Database

*preliminary through October 2025

Lakota Local School District

SURVIVAL RATIOS

The chart below demonstrates the changes in enrollment as students move through the system. Percentages greater than 100 indicate that there are more students than there were in the previous grade the previous year. In other words, there was growth and new students entered the system. Percentages less than 100 indicate that there was decline with students leaving the system.

- Birth to Kindergarten: This ratio indicates the number of children born in the area who attend kindergarten in the District 5 years later. Percentages less than 100% result from movement out of the district, attendance at a non-public or charter school, or residence in another district within the same area.

The following table illustrates the survival ratios for the Lakota Local School District.

| from | to | birth -> K | K->1 | 1->2 | 2->3 | 3->4 | 4->5 | 5->6 | 6->7 | 7->8 | 8->9 | 9->10 | 10->11 | 11->12 |
|------|--------------------|------------|----------|---------|--------|---------|--------|--------|--------|--------|----------|---------|---------|---------|
| 2016 | 2017 | 45.7% | 114.3% | 102.4% | 102.0% | 101.3% | 101.7% | 101.8% | 98.4% | 101.1% | 96.6% | 100.1% | 93.7% | 96.7% |
| 2017 | 2018 | 56.7% | 112.3% | 104.0% | 107.3% | 102.0% | 102.7% | 101.7% | 103.7% | 101.7% | 100.5% | 103.1% | 90.8% | 96.9% |
| 2018 | 2019 | 55.6% | 104.6% | 102.3% | 103.5% | 101.0% | 104.0% | 105.9% | 103.3% | 102.8% | 97.1% | 103.5% | 90.8% | 97.7% |
| 2019 | 2020 | 50.9% | 102.9% | 101.0% | 100.8% | 102.1% | 103.5% | 103.5% | 101.6% | 101.4% | 98.2% | 102.5% | 87.3% | 96.6% |
| 2020 | 2021 | 54.8% | 110.1% | 102.4% | 100.5% | 104.7% | 104.9% | 103.5% | 102.5% | 103.2% | 107.0% | 99.8% | 89.9% | 100.7% |
| 2021 | 2022 | 55.6% | 107.8% | 101.8% | 104.1% | 102.6% | 102.9% | 101.5% | 105.0% | 101.2% | 105.7% | 98.1% | 90.8% | 98.2% |
| 2022 | 2023 | 52.6% | 104.4% | 100.9% | 102.2% | 101.8% | 102.8% | 101.8% | 101.8% | 101.5% | 103.3% | 97.6% | 90.5% | 100.4% |
| 2023 | 2024 | 53.1% | 103.8% | 98.6% | 99.6% | 99.9% | 100.4% | 100.0% | 100.0% | 101.9% | 100.6% | 97.2% | 90.0% | 97.9% |
| 2024 | 2025 | 49.3% | 104.4% | 101.5% | 100.3% | 101.6% | 101.4% | 101.1% | 100.6% | 100.4% | 97.5% | 96.0% | 88.5% | 90.4% |
| | average | 52.70% | 107.186% | 101.66% | 102.3% | 101.88% | 102.7% | 102.3% | 101.9% | 101.7% | 100.730% | 99.757% | 90.263% | 97.275% |
| | standard deviation | 3.352% | 3.903% | 1.383% | 2.274% | 1.212% | 1.311% | 1.622% | 1.927% | 0.813% | 3.614% | 2.601% | 1.679% | 2.817% |

Lakota Local School District

ENROLLMENT PROJECTIONS

Enrollment projections were developed after analyzing the data collected in this report. The projections indicate a decrease of 358 students in grades Pre-K through 12, not including regular Pre-K or full-time JVS students, from the 2025-26 to the 2035-36 school year. The following tables and graph illustrate projected enrollments by grade and by grade group through the 2035-36 school year.

Preschool:

The Ohio School Design Manual [OSDM] provides space for preschool students with disabilities and a maximum of 40 ECE preschool students. The Lakota Local School District funds preschool through the following sources:

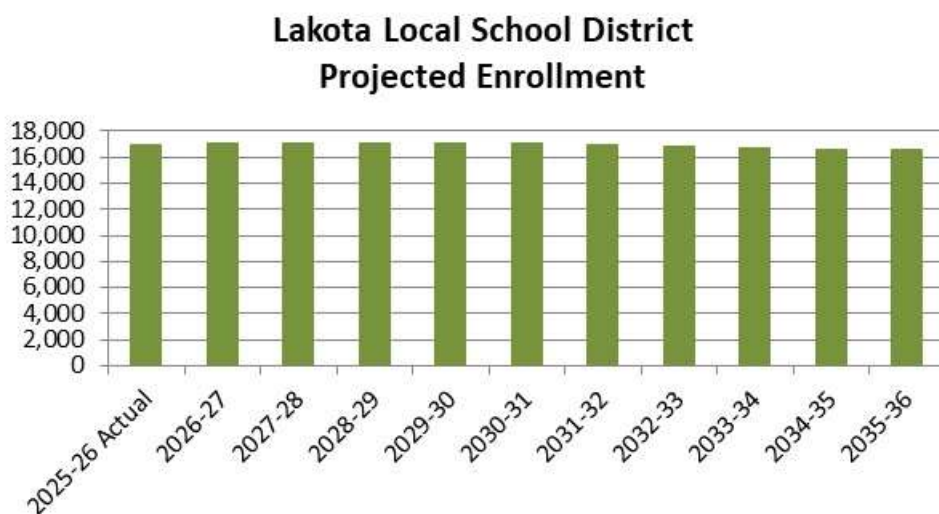
- General fund
- Tuition

Kindergarten:

The OSDM provides space for all day, every day kindergarten.

Career Technical:

Due to the specialized space requirements, career technical students are pulled out of the 11th and 12th grade enrollments and projected separately.



Lakota Local School District

Lakota Local School District Projected Enrollment

| Grade | 2025-26 Actual | 2026-27 | 2027-28 | 2028-29 | 2029-30 | 2030-31 | 2031-32 | 2032-33 | 2033-34 | 2034-35 | 2035-36 |
|-----------------------|-------------------|---------|---------|---------|---------|---------|---------|---------|---------|---------|---------|
| Pre-K (special needs) | 197 | 261 | 262 | 256 | 256 | 259 | 259 | 259 | 259 | 259 | 259 |
| K | 1,073 | 1,139 | 1,142 | 1,117 | 1,115 | 1,128 | 1,128 | 1,128 | 1,128 | 1,128 | 1,128 |
| 1 | 1,219 | 1,136 | 1,206 | 1,209 | 1,182 | 1,180 | 1,194 | 1,194 | 1,194 | 1,194 | 1,194 |
| 2 | 1,264 | 1,233 | 1,149 | 1,219 | 1,223 | 1,196 | 1,193 | 1,207 | 1,207 | 1,207 | 1,207 |
| 3 | 1,305 | 1,285 | 1,253 | 1,168 | 1,239 | 1,242 | 1,215 | 1,212 | 1,227 | 1,227 | 1,227 |
| 4 | 1,363 | 1,325 | 1,304 | 1,272 | 1,185 | 1,257 | 1,261 | 1,233 | 1,231 | 1,245 | 1,245 |
| 5 | 1,330 | 1,389 | 1,350 | 1,329 | 1,296 | 1,208 | 1,281 | 1,285 | 1,256 | 1,254 | 1,269 |
| 6 | 1,400 | 1,352 | 1,411 | 1,372 | 1,350 | 1,316 | 1,227 | 1,301 | 1,305 | 1,276 | 1,274 |
| 7 | 1,455 | 1,428 | 1,378 | 1,439 | 1,398 | 1,376 | 1,342 | 1,250 | 1,327 | 1,330 | 1,301 |
| 8 | 1,367 | 1,477 | 1,449 | 1,398 | 1,460 | 1,419 | 1,396 | 1,362 | 1,269 | 1,346 | 1,350 |
| 9 | 1,270 | 1,388 | 1,499 | 1,470 | 1,419 | 1,482 | 1,440 | 1,417 | 1,382 | 1,288 | 1,366 |
| 10 | 1,292 | 1,240 | 1,355 | 1,463 | 1,435 | 1,385 | 1,446 | 1,406 | 1,383 | 1,349 | 1,257 |
| 11 | 1,228 | 1,170 | 1,122 | 1,226 | 1,324 | 1,299 | 1,253 | 1,309 | 1,272 | 1,252 | 1,221 |
| 12 | 1,112 | 1,196 | 1,138 | 1,092 | 1,193 | 1,289 | 1,264 | 1,220 | 1,274 | 1,238 | 1,218 |
| Pre-K - 12 Total | 16,875 | 17,019 | 17,018 | 17,030 | 17,075 | 17,036 | 16,899 | 16,783 | 16,714 | 16,593 | 16,516 |
| Ungraded | 21 | 22 | 22 | 22 | 22 | 22 | 22 | 21 | 21 | 21 | 21 |
| Career Tech Off-Site | 17 | 18 | 17 | 17 | 19 | 19 | 19 | 19 | 19 | 19 | 18 |
| Grand Total | 16,913 | 17,059 | 17,057 | 17,069 | 17,116 | 17,077 | 16,940 | 16,823 | 16,754 | 16,633 | 16,555 |

Source: FutureThink

Lakota Local School District Projected Enrollment by Grade Group

| Grade | 2025-26 Actual | 2026-27 | 2027-28 | 2028-29 | 2029-30 | 2030-31 | 2031-32 | 2032-33 | 2033-34 | 2034-35 | 2035-36 |
|-----------------------|-------------------|---------|---------|---------|---------|---------|---------|---------|---------|---------|---------|
| Pre-K (special needs) | 197 | 261 | 262 | 256 | 256 | 259 | 259 | 259 | 259 | 259 | 259 |
| K - 2 | 3,556 | 3,508 | 3,497 | 3,545 | 3,520 | 3,504 | 3,515 | 3,529 | 3,529 | 3,529 | 3,529 |
| 3 - 6 | 5,398 | 5,351 | 5,318 | 5,141 | 5,070 | 5,023 | 4,984 | 5,031 | 5,019 | 5,002 | 5,015 |
| 7 - 8 | 2,822 | 2,905 | 2,827 | 2,837 | 2,858 | 2,795 | 2,738 | 2,612 | 2,596 | 2,676 | 2,651 |
| 9 | 1,270 | 1,388 | 1,499 | 1,470 | 1,419 | 1,482 | 1,440 | 1,417 | 1,382 | 1,288 | 1,366 |
| 10 - 12 | 3,632 | 3,606 | 3,615 | 3,781 | 3,952 | 3,973 | 3,963 | 3,935 | 3,929 | 3,839 | 3,696 |
| Pre-K - 12 Total | 16,875 | 17,019 | 17,018 | 17,030 | 17,075 | 17,036 | 16,899 | 16,783 | 16,714 | 16,593 | 16,516 |
| Ungraded | 21 | 22 | 22 | 22 | 22 | 22 | 22 | 21 | 21 | 21 | 21 |
| Career Tech Off-Site | 17 | 18 | 17 | 17 | 19 | 19 | 19 | 19 | 19 | 19 | 18 |
| Grand Total | 16,913 | 17,059 | 17,057 | 17,069 | 17,116 | 17,077 | 16,940 | 16,823 | 16,754 | 16,633 | 16,555 |

Source: FutureThink

CONCLUSION

As with any projection, the District should pay close attention to live birth counts, enrollment in elementary schools, community school enrollment, open enrollment, and any housing growth. Each of these factors will have an impact on future student enrollment.

FutureThink is pleased to have had the opportunity to provide the District with enrollment projection services. We hope this document will provide the necessary information to make informed decisions about the future of the Lakota Local School District.

APPENDIX

The following documents are included in the appendix:

- District Acceptance
- District Questionnaire

The July 2024 Enrollment Projection Report is available upon request.



Tracy Healy <thealy@futurethinkinc.com>

FW: Lakota LSD (Butler) Enrollment Projection Discussion

Payton.Riehl@ofcc.ohio.gov <Payton.Riehl@ofcc.ohio.gov>

Wed, Mar 11, 2026 at 9:01 AM

To: Tracy Healy <thealy@futurethinkinc.com>

Cc: "Todd.Hager@ofcc.ohio.gov" <Todd.Hager@ofcc.ohio.gov>, "Valerie.Montoya@ofcc.ohio.gov" <Valerie.Montoya@ofcc.ohio.gov>, "Joseph.Macneil@ofcc.ohio.gov" <Joseph.Macneil@ofcc.ohio.gov>

Payton Riehl

Planning Manager 2

30 West Spring Street, 4th Floor, Columbus, OH 43215

Direct: 614.499.6793 OFCC Main: 614.466.6290

payton.riehl@ofcc.ohio.govFollow Us: [Facebook](#), [LinkedIn](#), [Twitter](#), and [YouTube](#)

From: Ashley Whitely <ashley.whitely@lakotaonline.com>**Sent:** Wednesday, March 11, 2026 6:55 AM**To:** Riehl, Payton <Payton.Riehl@ofcc.ohio.gov>; Craig Hatfield <craig.hatfield@lakotaonline.com>**Cc:** Christina Oyler <coyler@elevar.com>; Hager, Todd <Todd.Hager@ofcc.ohio.gov>; Tom Fernandez <tfernandez@elevar.com>**Subject:** Re: Lakota LSD (Butler) Enrollment Projection Discussion

Payton,

Please consider this email a formal acceptance of the enrollment numbers.

Thanks,

Ashley Whitely

Get [Outlook for iOS](#)

From: Payton.Riehl@ofcc.ohio.gov <Payton.Riehl@ofcc.ohio.gov>**Sent:** Tuesday, March 10, 2026 10:44:16 AM**To:** Ashley Whitely <ashley.whitely@lakotaonline.com>; Craig Hatfield <craig.hatfield@lakotaonline.com>

District Questionnaire for Lakota Local of Butler County (46110) [Thealy]

District Questionnaire has been submitted for review

Enrollment Report For Lakota Local of Butler County (46110)

Contact Information

Superintendent Name: Ashley Whitely
 Superintendent Email: ashley.whitely@lakotaonline.com
 Superintendent Phone: (513) 874-5505
 Contact Name (if different from Superintendent): Craig Hatfield
 Contact Title: Chief Operations Officer
 Contact Email: craig.hatfield@lakotaonline.com
 Contact Phone: (513) 874-5505

K12 Enrollment

| Grade | Enrolled 2016–2017 | Enrolled 2017–2018 | Enrolled 2018–2019 | Enrolled 2019–2020 | Enrolled 2020–2021 | Enrolled 2021–2022 | Enrolled 2022–2023 | Enrolled 2023–2024 | Enrolled 2024–2025 | Enrolled 2025–2026 |
|-----------------|--------------------|--------------------|--------------------|--------------------|--------------------|--------------------|--------------------|--------------------|--------------------|--------------------|
| K | 938 | 1072 | 1291 | 1236 | 1146 | 1238 | 1263 | 1199 | 1168 | 1073 |
| 1 | 1056 | 1072 | 1204 | 1351 | 1272 | 1262 | 1334 | 1319 | 1245 | 1219 |
| 2 | 1190 | 1081 | 1115 | 1232 | 1364 | 1302 | 1285 | 1346 | 1301 | 1264 |
| 3 | 1149 | 1214 | 1160 | 1154 | 1242 | 1371 | 1356 | 1313 | 1341 | 1305 |
| 4 | 1300 | 1164 | 1238 | 1172 | 1178 | 1300 | 1406 | 1380 | 1312 | 1363 |
| 5 | 1211 | 1322 | 1195 | 1287 | 1213 | 1236 | 1338 | 1446 | 1385 | 1330 |
| 6 | 1338 | 1233 | 1344 | 1265 | 1332 | 1255 | 1255 | 1362 | 1446 | 1400 |
| 7 | 1321 | 1316 | 1279 | 1389 | 1285 | 1365 | 1318 | 1278 | 1362 | 1455 |
| 8 | 1305 | 1336 | 1339 | 1315 | 1408 | 1326 | 1382 | 1338 | 1302 | 1367 |
| 9 | 1319 | 1261 | 1343 | 1300 | 1291 | 1507 | 1401 | 1428 | 1346 | 1270 |
| 10 | 1370 | 1320 | 1300 | 1390 | 1332 | 1289 | 1478 | 1367 | 1388 | 1292 |
| 11 | 1140 | 1284 | 1199 | 1181 | 1213 | 1198 | 1171 | 1337 | 1231 | 1229 |
| 12 | 1153 | 1102 | 1244 | 1171 | 1141 | 1222 | 1176 | 1176 | 1313 | 1128 |
| Ungraded | 35 | 51 | 51 | 0 | 0 | 0 | 0 | 0 | 0 | 21 |
| Total | 15825 | 15828 | 16302 | 16443 | 16417 | 16871 | 17163 | 17289 | 17140 | 16716 |

All Day Kindergarten

| |
|--|
| Do you offer kindergarten to all students, all day, every day? |
| yes |

Preschool Enrollment

Do you **house** Preschool/Pre-K students in your facilities, **including** Pre-K students in a program run by an ESC or other agency?

yes

Please select your district's preschool funding sources:

General Fund Tuition

Early Childhood Education (ECE) grant funding (known as entitlement and public preschool) is distributed by the Ohio Department of Education and Workforce to districts to provide preschool services for 3- and 4-year old children of income eligible families.

Do you house Early Childhood Education (ECE) students in your facilities?

no

Do you house Pre-K students with disabilities in your facilities?

yes

Please provide enrollment data:

| Grade | 2016–2017 | 2017–2018 | 2018–2019 | 2019–2020 | 2020–2021 | 2021–2022 | 2022–2023 | 2023–2024 | 2024–2025 | 2025–2026 |
|-------------------------|-----------|-----------|-----------|-----------|-----------|-----------|-----------|-----------|-----------|-----------|
| Pre-K with disabilities | 139 | 143 | 129 | 156 | 239 | 293 | 305 | 333 | 263 | 197 |

Do you house other Pre-K students in your facilities that are not students with disabilities and are not enrolled in ECE, or Federal Head Start (e.g., tuition-based or funded with other sources)?

yes

Please provide enrollment data:

| Grade | 2016–2017 | 2017–2018 | 2018–2019 | 2019–2020 | 2020–2021 | 2021–2022 | 2022–2023 | 2023–2024 | 2024–2025 | 2025–2026 |
|--|-----------|-----------|-----------|-----------|-----------|-----------|-----------|-----------|-----------|-----------|
| Pre-K Other (not disabled, not enrolled in ECE, or Federal Head Start) | 159 | 150 | 145 | 152 | 132 | 219 | 214 | 179 | 114 | 93 |

Student Teacher Ratios

What are your district's current average student to teacher ratios for the following grade groups?

Include core teachers only.

- K–3 24 to 1
- 4–5 26 to 1
- 6–8 28 to 1
- 9–12 28 to 1

Grade Configurations

- PK through PK
- K through 2
- 3 through 6
- 7 through 8
- 9 through 9
- 10 through 12

Students with Disabilities

Definitions:

- **IE13** — Special Education outside the regular class less than 21% of the day.
- **IE14** — Special Education outside the regular class at least 21% of the day and no more than 60% of the day.
- **IE15** — Special Education outside the regular class more than 60% of the day.

Please provide the current school year enrollment for students with disabilities by DEW program code and grade configuration.

| Code | PK-PK | K-2 | 3-6 | 7-8 | 9-9 | 10-12 |
|--------------|----------|-----------|------------|-----------|-----------|------------|
| IE13 | 0 | 3 | 5 | 0 | 5 | 3 |
| IE14 | 2 | 1 | 1 | 0 | 0 | 1 |
| IE15 | 5 | 28 | 128 | 74 | 41 | 107 |
| Total | 7 | 32 | 134 | 74 | 46 | 111 |

*These students should be included in the October headcount

Does your District house additional students with disabilities from other school districts? (i.e., county programs, etc.) no

Community School Enrollment

| Grade | Enrolled 2016-2017 | Enrolled 2017-2018 | Enrolled 2018-2019 | Enrolled 2019-2020 | Enrolled 2020-2021 | Enrolled 2021-2022 | Enrolled 2022-2023 | Enrolled 2023-2024 | Enrolled 2024-2025 | Enrolled 2025-2026 |
|--------------|--------------------|--------------------|--------------------|--------------------|--------------------|--------------------|--------------------|--------------------|--------------------|--------------------|
| PreK | 0 | 0 | 0 | 0 | 0 | 0 | 0 | 0 | 0 | 0 |
| K | 5 | 8 | 8 | 7 | 34 | 17 | 36 | 31 | 35 | 1 |
| 1 | 7 | 3 | 6 | 5 | 23 | 8 | 24 | 22 | 23 | 16 |
| 2 | 5 | 5 | 4 | 5 | 20 | 11 | 18 | 22 | 29 | 15 |
| 3 | 7 | 7 | 7 | 3 | 22 | 10 | 14 | 16 | 26 | 17 |
| 4 | 11 | 6 | 9 | 10 | 16 | 13 | 15 | 22 | 21 | 18 |
| 5 | 7 | 15 | 7 | 9 | 27 | 15 | 20 | 23 | 20 | 17 |
| 6 | 15 | 10 | 10 | 7 | 20 | 22 | 12 | 28 | 27 | 16 |
| 7 | 13 | 17 | 11 | 11 | 21 | 14 | 19 | 13 | 36 | 18 |
| 8 | 16 | 20 | 11 | 12 | 26 | 23 | 30 | 34 | 23 | 18 |
| 9 | 29 | 24 | 31 | 19 | 34 | 29 | 29 | 42 | 36 | 15 |
| 10 | 31 | 37 | 22 | 33 | 29 | 38 | 30 | 37 | 42 | 19 |
| 11 | 31 | 30 | 36 | 24 | 35 | 29 | 38 | 37 | 56 | 24 |
| 12 | 52 | 41 | 31 | 29 | 34 | 33 | 25 | 33 | 44 | 28 |
| Ungraded | 0 | 0 | 0 | 0 | 0 | 0 | 0 | 0 | 0 | 0 |
| Total | 229 | 223 | 193 | 174 | 341 | 262 | 310 | 360 | 418 | 222 |

Online Enrollment

| Grade | Enrolled 2016–2017 | Enrolled 2017–2018 | Enrolled 2018–2019 | Enrolled 2019–2020 | Enrolled 2020–2021 | Enrolled 2021–2022 | Enrolled 2022–2023 | Enrolled 2023–2024 | Enrolled 2024–2025 | Enrolled 2025–2026 |
|--------------|--------------------|--------------------|--------------------|--------------------|--------------------|--------------------|--------------------|--------------------|--------------------|--------------------|
| PreK | 0 | 0 | 0 | 0 | 0 | 0 | 0 | 0 | 0 | 0 |
| K | 0 | 0 | 0 | 0 | 0 | 14 | 13 | 7 | 5 | 0 |
| 1 | 0 | 0 | 0 | 0 | 0 | 8 | 9 | 8 | 8 | 0 |
| 2 | 0 | 0 | 0 | 0 | 0 | 9 | 7 | 9 | 12 | 0 |
| 3 | 0 | 0 | 0 | 0 | 0 | 9 | 5 | 4 | 10 | 0 |
| 4 | 0 | 0 | 0 | 0 | 0 | 12 | 8 | 6 | 7 | 0 |
| 5 | 0 | 0 | 0 | 0 | 0 | 13 | 11 | 13 | 5 | 0 |
| 6 | 0 | 0 | 0 | 0 | 0 | 21 | 4 | 19 | 14 | 0 |
| 7 | 0 | 0 | 0 | 0 | 0 | 13 | 19 | 7 | 23 | 0 |
| 8 | 0 | 0 | 0 | 0 | 0 | 22 | 29 | 34 | 13 | 0 |
| 9 | 0 | 0 | 0 | 0 | 0 | 27 | 29 | 67 | 62 | 0 |
| 10 | 0 | 0 | 0 | 0 | 0 | 36 | 28 | 101 | 92 | 0 |
| 11 | 0 | 0 | 0 | 0 | 0 | 28 | 31 | 93 | 138 | 0 |
| 12 | 0 | 0 | 0 | 0 | 0 | 27 | 20 | 123 | 110 | 0 |
| Ungraded | 0 | 0 | 0 | 0 | 0 | 0 | 0 | 0 | 0 | 0 |
| Total | 0 | 0 | 0 | 0 | 0 | 239 | 213 | 491 | 499 | 0 |

Open Enrollment (In)

| Grade | Enrolled 2016–2017 | Enrolled 2017–2018 | Enrolled 2018–2019 | Enrolled 2019–2020 | Enrolled 2020–2021 | Enrolled 2021–2022 | Enrolled 2022–2023 | Enrolled 2023–2024 | Enrolled 2024–2025 | Enrolled 2025–2026 |
|--------------|--------------------|--------------------|--------------------|--------------------|--------------------|--------------------|--------------------|--------------------|--------------------|--------------------|
| Prek | 1 | 1 | 0 | 0 | 0 | 0 | 1 | 1 | 0 | 0 |
| K | 19 | 16 | 10 | 13 | 13 | 12 | 14 | 16 | 6 | 7 |
| 1 | 17 | 19 | 21 | 15 | 21 | 10 | 13 | 22 | 6 | 4 |
| 2 | 22 | 31 | 22 | 21 | 18 | 22 | 12 | 20 | 8 | 7 |
| 3 | 25 | 35 | 28 | 17 | 18 | 17 | 20 | 20 | 8 | 5 |
| 4 | 32 | 27 | 25 | 27 | 20 | 19 | 10 | 23 | 5 | 8 |
| 5 | 27 | 44 | 29 | 26 | 24 | 18 | 22 | 16 | 4 | 3 |
| 6 | 24 | 27 | 51 | 21 | 26 | 23 | 19 | 32 | 4 | 4 |
| 7 | 18 | 30 | 37 | 40 | 21 | 24 | 24 | 22 | 18 | 5 |
| 8 | 16 | 29 | 35 | 39 | 38 | 28 | 30 | 27 | 18 | 13 |
| 9 | 33 | 15 | 38 | 36 | 46 | 47 | 33 | 32 | 19 | 11 |
| 10 | 22 | 45 | 36 | 43 | 45 | 43 | 53 | 39 | 31 | 18 |
| 11 | 33 | 33 | 50 | 37 | 51 | 46 | 44 | 47 | 34 | 23 |
| 12 | 28 | 45 | 40 | 55 | 44 | 51 | 53 | 46 | 43 | 20 |
| Ungraded | 0 | 0 | 0 | 0 | 0 | 0 | 0 | 0 | 0 | 0 |
| Total | 317 | 397 | 422 | 390 | 385 | 360 | 348 | 363 | 204 | 128 |

Open Enrollment (Out)

| Grade | Enrolled 2016–2017 | Enrolled 2017–2018 | Enrolled 2018–2019 | Enrolled 2019–2020 | Enrolled 2020–2021 | Enrolled 2021–2022 | Enrolled 2022–2023 | Enrolled 2023–2024 | Enrolled 2024–2025 | Enrolled 2025–2026 |
|--------------|--------------------|--------------------|--------------------|--------------------|--------------------|--------------------|--------------------|--------------------|--------------------|--------------------|
| Prek | 0 | 0 | 0 | 1 | 2 | 1 | 1 | 1 | 0 | 0 |
| K | 22 | 18 | 12 | 10 | 10 | 17 | 6 | 5 | 12 | 4 |
| 1 | 17 | 30 | 18 | 15 | 11 | 15 | 14 | 4 | 7 | 10 |
| 2 | 25 | 23 | 24 | 18 | 21 | 11 | 18 | 12 | 6 | 9 |
| 3 | 8 | 27 | 26 | 21 | 20 | 19 | 14 | 11 | 15 | 7 |
| 4 | 16 | 12 | 22 | 20 | 21 | 16 | 13 | 16 | 12 | 13 |
| 5 | 9 | 20 | 14 | 20 | 20 | 17 | 10 | 9 | 10 | 12 |
| 6 | 14 | 19 | 19 | 13 | 24 | 19 | 13 | 11 | 10 | 9 |
| 7 | 8 | 21 | 22 | 25 | 12 | 28 | 18 | 21 | 15 | 18 |
| 8 | 15 | 15 | 26 | 22 | 28 | 12 | 25 | 21 | 20 | 16 |
| 9 | 9 | 22 | 20 | 26 | 27 | 32 | 10 | 32 | 22 | 18 |
| 10 | 16 | 19 | 26 | 25 | 30 | 26 | 31 | 17 | 31 | 23 |
| 11 | 28 | 28 | 27 | 32 | 34 | 34 | 25 | 30 | 20 | 33 |
| 12 | 21 | 44 | 37 | 33 | 34 | 40 | 28 | 31 | 37 | 26 |
| Ungraded | 0 | 0 | 1 | 0 | 0 | 0 | 0 | 0 | 0 | 0 |
| Total | 208 | 298 | 294 | 281 | 294 | 287 | 226 | 221 | 217 | 198 |

JVS Enrollment

Does your District belong to a JVSD? yes

Please select the JVSD your District belongs to: Butler Technology & Career Development Schools

Please provide enrollment for students attending JVS (or "Other") full or half-time.

| Grade | Enrolled 2016–2017 | Enrolled 2017–2018 | Enrolled 2018–2019 | Enrolled 2019–2020 | Enrolled 2020–2021 | Enrolled 2021–2022 | Enrolled 2022–2023 | Enrolled 2023–2024 | Enrolled 2024–2025 | Enrolled 2025–2026 |
|--------------|--------------------|--------------------|--------------------|--------------------|--------------------|--------------------|--------------------|--------------------|--------------------|--------------------|
| Full Time 11 | 166 | 138 | 108 | 114 | 120 | 114 | 138 | 124 | 124 | 146 |
| Full Time 12 | 185 | 107 | 102 | 79 | 98 | 103 | 105 | 126 | 126 | 97 |
| Total | 351 | 245 | 210 | 193 | 218 | 217 | 243 | 250 | 250 | 243 |

| Grade | Enrolled 2016–2017 | Enrolled 2017–2018 | Enrolled 2018–2019 | Enrolled 2019–2020 | Enrolled 2020–2021 | Enrolled 2021–2022 | Enrolled 2022–2023 | Enrolled 2023–2024 | Enrolled 2024–2025 | Enrolled 2025–2026 |
|--------------|--------------------|--------------------|--------------------|--------------------|--------------------|--------------------|--------------------|--------------------|--------------------|--------------------|
| Half Time 11 | 0 | 0 | 0 | 0 | 0 | 0 | 0 | 0 | 1 | 1 |
| Half Time 12 | 0 | 0 | 0 | 0 | 0 | 0 | 0 | 0 | 4 | 16 |
| Total | 0 | 0 | 0 | 0 | 0 | 0 | 0 | 0 | 5 | 17 |

Career Technical Compact Enrollment

Does your District belong to a Compact? no

Career Tech Program Enrollment

Include only those students who are considered "concentrators" or enrolled in a "pathway". Do NOT include students who are just taking one course.

Comprehensive Career Tech: Students who attend academics and career technical programs in your district.

On-Site Career Tech: Students who attend academics in another district but attend career technical programs in your district.

Satellite JVSD: Same as Comprehensive Career Tech, but the program is sponsored and/or administered by the JVS District and housed by your District.

Boundaries

Please list municipalities, townships, and any additional counties within the boundaries of your school district: West Chester Township Liberty Township

Has your District experienced changes in District-wide boundaries since 2004? no

Growth

Do you expect significant growth in your District over the next 10 years? yes

Liberty Township anticipates their population will double over the next 20 years

Additional Information

Please provide any additional information you feel may impact your District's future enrollment [i.e. private schools opening or closing]

Submission Documents

The following are additional documents which may be useful in projecting your District's enrollment. Please check any documents you intend to provide for consideration and forward documents to:

Tracy Healy (thealy@futurethinkinc.com)

or

Future Think Inc.

5685 Tynecastle Loop

Dublin, 43016

Return To District Print Report

Please contact Tracy Healy (thealy@futurethinkinc.com, 614-264-2638) with any questions or concerns regarding the District Questionnaire.