

WES ONWARD Afterschool Program

Name _____

Classroom Teacher _____

Session Five - Monday, April 27th - Thursday, June 11th, 2026



Dear WES Families,

- Session Four has brought us a bit of sunshine and we are looking forward to a fun filled final session of the school year. As the weather hopefully turns even warmer, we will explore spring through crafts, dance, music, and plenty of time outside.
- Programs are filled on a first-come, first-served basis. It is important that you turn in your paperwork promptly.
- Students whose enrollment and registration paperwork is incomplete will not be enrolled. Students may not attend if we do not have all of the required documentation, as follows:
 - 1.Registration Form (To be completed once per year (July 1 to June 30) unless information has changed. If your child attended our summer program and all of the information remains the same, you do not have to complete this form again to enroll for the school-year.
 - 2.School-Year Family Contribution Form (complete once per school-year)
 - 3.School-Year Transportation Form (complete once per school-year)
 - 4.Enrollment Form (complete for each session)

All forms are available at school, on our webpage

<https://www.cvsu.org/domain/375>, in our Blackboard email announcement, or by request to Katie Lovely (kl lovely@cvsu.org).

- Significant and/or continuous behavior issues will result in dismissal from the program for the session.
- We will keep a waiting list of students whom we were unable to enroll in case a student who did get a spot does not attend or stops attending.

Best wishes,

The WES ONWARD Team

Important Dates

Please note that WES ONWARD will not be running **Monday, May 25th**, as it is a Memorial Day and school is not in session.

The last day of Session Five is **Thursday June, 11th**. There is **NO ONWARD Friday June 12th**

Please update in the Parent Pick Up Portal with your alternative dismissal plan.

Early Release Day

- **Wednesday, May 13th** -

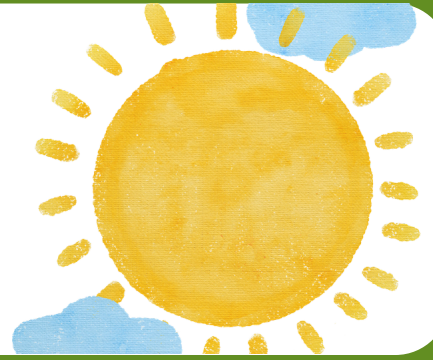
Students who are regularly enrolled for Wednesdays at ONWARD will be automatically enrolled for early-release Wednesdays from 1:00 to 5:00. Students who do not enroll for Wednesdays can sign up to attend ONWARD from 1:00 to 3:15 on early-release days.



Name _____ Grade _____

Primary Guardian _____

Email _____ Phone _____



Enrollment and Activity Choices

Monday

- ___ Trivia World (3-5)
- ___ Music & Motion w/Molly (K-5) **limited spots available**
- ___ Basketball (1-2) **limited spots available**
- ___ Outdoor Adventures (K-5)

Tuesday

- ___ Directed Drawing (3-5)
- ___ Go Play Outside (K-5).
- ___ Crafternoon (K-5)
- ___ Chess Club (2-5)

Wednesday

- ___ What's Up Wednesday
- ___ Early Release Wednesdays ONLY

Thursday

- ___ Woods Wanderers (K-5)
- ___ Papercraft (K-5)
- ___ Go Play Outside (K-5)
- ___ Slime City (1-5) **limited spots available**

Friday

- ___ Flexible Friday...Different activities every week...cooking, crafting, group games, and so much more

**Complete this form
online by scanning
the QR below**



**Check out
the WES
Onward
Afterschool
Facebook
page!**



Things to Remember...

- Each day students should have appropriate clothing and footwear for daily outdoor play. A water bottle is helpful, especially during the warmer months.
- No cell phones or personal items should be brought to Onward Afterschool Program.

ONWARD Daily Schedule

2:50-3:30
Snack and Recess

3:30-4:30
Activity Block

4:30-5:00
Clean Up
Closing Activity/Outside
Dismissal

Contact Information

- Site Coordinator - Katie Lovely
- klovely@cvsu.org
- 802-565-0693

