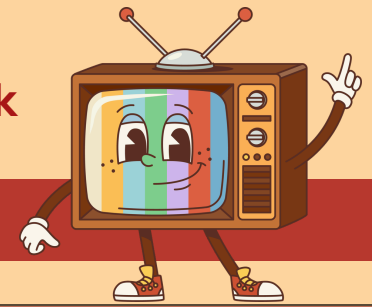




# FSUS SUMMER CAMP 2026



Sports Network



## WEEK 1 AGENDA: JUNE 1<sup>ST</sup> - JUNE 5<sup>TH</sup>

### Monday

### Tuesday

### Wednesday

### Thursday

### Friday

7:30-9:00- AM Stations  
 9:00-9:30- Snack  
 9:30-10:00- Opening Assembly  
 10:00-12:30- Activities  
 12:30-1:00- Lunch  
 1:00-3:00- Field Day On-Site Event  
 3:00- 4:00- Activities  
 4:00- 4:30- Snack  
 4:30-6:00- PM Stations

7:30-9:00- AM Stations  
 9:00-9:15- Snack  
 9:15- 9:30- Morning Assembly & Bus Loading  
 9:30-12:30- Urban Air Field Trip  
 12:30- 1:00- Lunch  
 1:00-4:00- Activities  
 4:00-4:30- Snack  
 4:30-6:00- PM Stations

7:30-9:00- AM Stations  
 9:00-9:15- Snack  
 9:15- 9:30- Morning Assembly & Bus Loading  
 9:30-12:00- Bowling @ Capital Lanes Field Trip  
 12:00-12:30- Lunch  
 12:30-4:00- Activities  
 4:00-4:30- Snack  
 4:30-6:00- PM Stations

7:30-9:00- AM Stations  
 9:00-9:15- Snack  
 9:15- 9:30- Morning Assembly  
 9:30-11:00- Activities  
**3rd-5th**  
 11:00-1:15- Swimming @ Jack McLean Field Trip  
 1:15-1:45- Lunch  
 1:45- 4:00- Activities  
**K-2nd**  
 11:00-11:30- Activities  
 11:30-12:00- Lunch  
 12:00- 2:30- Swimming @ Jack McLean Field Trip  
 2:30-4:00- Activities  
 4:00-4:30- Snack  
 4:30-6:00- PM Stations

7:30-9:00- AM Stations  
 9:00-9:15- Snack  
 9:15- 9:30- Morning Assembly  
 9:30-12:30- Activities & Martial Arts On-Site  
 12:30-1:00- Lunch  
 1:00-3:30- Activities  
 3:30-4:00- Snack  
 4:00-4:30- Closing Assembly  
 4:30-6:00- Movie Time!

*Come dressed with swimwear under camp clothes. Bring a towel, sunscreen, wet clothes bag, & extra dry clothes if needed*

*Pizza Friday \$2/Slice Pay at Friday drop-off if you would like your camper to eat pizza for lunch*

## NOTES & REMINDERS

- Wear sneakers daily!
- Bring a refillable water bottle
- Bring sunscreen (non-siblings may not share)
- Do NOT allow your child(ren) to bring money, unless otherwise indicated.
- Electronics or cell phones are NOT permitted at camp.
- Bring 2 snacks and a lunch daily (unless it is provided that day)
- Drop-off/Pick-up will be in the loop (on the right when looking at the building)

Questions? 850-245-3843 or edep@fsus.school

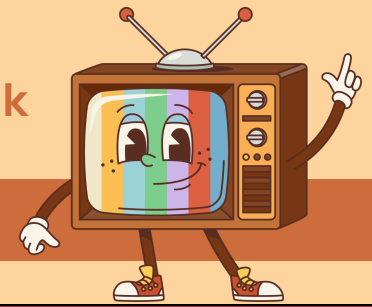




# FSUS SUMMER CAMP 2026



Animal Network



## WEEK 2 AGENDA: JUNE 8<sup>TH</sup> - JUNE 12<sup>TH</sup>

Monday	Tuesday	Wednesday	Thursday	Friday
7:30-9:00- AM Stations 9:00-9:30- Snack 9:30-10:00- Opening Assembly 10:00-12:30- Activities 12:30-1:00- Lunch 1:00- 2:30- Ani-Mania On-Site Event 2:30- 4:00- Activities 4:00- 4:30- Snack 4:30-6:00- PM Stations	7:30-9:00- AM Stations 9:00-9:15- Snack 9:15- 9:30- Morning Assembly & Bus Loading 9:30-1:00- Sandyland Farms Field Trip 1:00-1:30- Lunch 1:30-4:00- Activities 4:00-4:30- Snack 4:30-6:00- PM Stations	7:30-9:00- AM Stations 9:00-9:15- Snack 9:15- 9:30- Morning Assembly & Bus Loading 9:30-12:30- Tallahassee Museum Field Trip 12:30-1:00- Lunch 1:00-4:00- Activities 4:00-4:30- Snack 4:30-6:00- PM Stations	7:30-9:00- AM Stations 9:00-9:15- Snack 9:15- 9:30- Morning Assembly 9:30-11:00- Activities <b>3rd-5th</b> 11:00-1:15- Swimming @ Jack McLean Field Trip 1:15-1:45- Lunch 1:45- 4:00- Activities <b>K-2nd</b> 11:00-11:30- Activities 11:30-12:00- Lunch 12:00- 2:30- Swimming @ Jack McLean Field Trip 2:30-4:00- Activities 4:00-4:30- Snack 4:30-6:00- PM Stations	7:30-9:00- AM Stations 9:00-9:15- Snack 9:15- 9:30- Morning Assembly 9:30-12:30- Activities & Animal Tales On-Site 12:30-1:00- Lunch 1:00-3:30- Activities 3:30-4:00- Snack 4:00-4:30- Closing Assembly 4:30-6:00- Movie Time!

*Come dressed with swimwear under camp clothes. Bring a towel, sunscreen, wet clothes bag, & extra dry clothes if needed*

**Pizza Friday**  
\$2/Slice  
*Pay at Friday drop-off if you would like your camper to eat pizza for lunch*

## NOTES & REMINDERS

- Wear sneakers daily!
- Bring a refillable water bottle
- Bring sunscreen (non-siblings may not share)
- Do NOT allow your child(ren) to bring money, unless otherwise indicated.
- Electronics or cell phones are NOT permitted at camp.
- Bring 2 snacks and a lunch daily (unless it is provided that day)
- Drop-off/Pick-up will be in the loop (on the right when looking at the building)

Questions? 850-245-3843 or edep@fsus.school

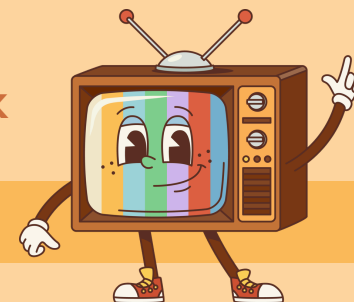




# FSUS SUMMER CAMP 2026



Local Network



## WEEK 3 AGENDA: JUNE 15<sup>TH</sup> - JUNE 19<sup>TH</sup>

Monday	Tuesday	Wednesday	Thursday	Friday
7:30-9:00- AM Stations 9:00-9:30- Snack 9:30-10:00- Opening Assembly 10:00-12:30- Activities & Agent Training On-Site Event 12:30-1:00- Lunch 1:00- 4:00- Activities & Agent Training On-Site Event 4:00- 4:30- Snack 4:30-6:00- PM Stations	7:30-9:00- AM Stations 9:00-9:15- Snack 9:15-12:30- Tallahassee Challenger/IMAX Field Trip 12:30-1:00- Lunch 1:00-4:00- Activities 4:00-4:30- Snack 4:30-6:00- PM Stations	7:30-9:00- AM Stations 9:00-9:15- Snack 9:15- 1:00- Monticello Opera House Field Trip 1:00- 1:30- Lunch 1:30-4:00- Activities 4:00-4:30- Snack 4:30-6:00- PM Stations	7:30-9:00- AM Stations 9:00-9:15- Snack 9:15- 9:30- Morning Assembly 9:30-11:00- Activities <b>3rd-5th</b> 11:00-1:15- Swimming @ Jack McLean Field Trip 1:15-1:45- Lunch 1:45- 4:00- Activities <b>K-2nd</b> 11:00-11:30- Activities 11:30-12:00- Lunch 12:00- 2:30- Swimming @ Jack McLean Field Trip 2:30-4:00- Activities 4:00-4:30- Snack 4:30-6:00- PM Stations	<b>CAMP CLOSED</b>

*Come dressed with swimwear under camp clothes.  
Bring a towel, sunscreen, wet clothes bag, & extra dry clothes if needed*

## NOTES & REMINDERS

- Wear sneakers daily!
- Bring a refillable water bottle
- Bring sunscreen (non-siblings may not share)
- Do NOT allow your child(ren) to bring money, unless otherwise indicated.
- Electronics or cell phones are NOT permitted at camp.
- Bring 2 snacks and a lunch daily (unless it is provided that day)
- Drop-off/Pick-up will be in the loop (on the right when looking at the building)

Questions? 850-245-3843 or edep@fsus.school

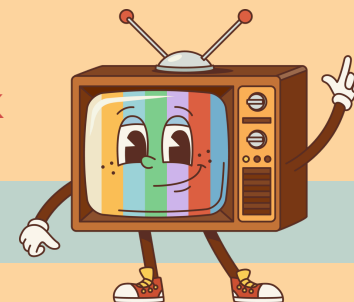




# FSUS SUMMER CAMP 2026



Food Network



## WEEK 4 AGENDA: JUNE 22<sup>ND</sup> - JUNE 26<sup>TH</sup>

Monday	Tuesday	Wednesday	Thursday	Friday
7:30-9:00- AM Stations 9:00-9:30- Snack 9:30-10:00- Opening Assembly 10:00-12:30- Activities 12:30-1:00- Lunch 1:00- 4:00- Cookie Decorating On-Site & Activities 4:00- 4:30- Snack 4:30-6:00- PM Stations	7:30-9:00- AM Stations 9:00-9:15- Snack 9:15- 9:30- Morning Assembly & Bus Loading <b>K-2nd</b> 9:30- 1:30- Dave's Pizza Garage Field Trip ( <b>Pizza Lunch Provided</b> ) 1:30-4:00- Activities <b>3rd-5th</b> 9:30- 12:00- Bowling @ Capital Lanes Field Trip 12:00-12:30- Lunch 12:30- 4:00- Activities 4:00-4:30- Snack 4:30-6:00- PM Stations	7:30-9:00- AM Stations 9:00-9:15- Snack 9:15- 9:30- Morning Assembly & Bus Loading <b>K-2nd</b> 9:30- 12:00- Bowling @ Capital Lanes Field Trip 12:00-12:30- Lunch 12:30- 4:00- Activities <b>3rd-5th</b> 9:30- 1:30- Dave's Pizza Garage Field Trip ( <b>Pizza Lunch Provided</b> ) 1:30-4:00- Activities 4:00-4:30- Snack 4:30-6:00- PM Stations	7:30-9:00- AM Stations 9:00-9:15- Snack 9:15- 9:30- Morning Assembly 9:30-11:00- Activities <b>3rd-5th</b> 11:00-1:15- Swimming @ Jack McLean Field Trip 1:15-1:45- Lunch 1:45- 4:00- Activities <b>K-2nd</b> 11:00-11:30- Activities 11:30-12:00- Lunch 12:00- 2:30- Swimming @ Jack McLean Field Trip 2:30-4:00- Activities 4:00-4:30- Snack 4:30-6:00- PM Stations	7:30-9:00- AM Stations 9:00-9:15- Snack 9:15- 9:30- Morning Assembly 9:30-12:30- Activities 12:30-1:00- Lunch 1:00-3:30- Activities & Momma P's Ice Cream 3:30-4:00- Snack 4:00-4:30- Closing Assembly 4:30-6:00- Movie Time!

*Come dressed with swimwear under camp clothes. Bring a towel, sunscreen, wet clothes bag, & extra dry clothes if needed*

*Pizza Friday \$2/slice  
Pay at Friday drop-off if you would like your camper to eat pizza for lunch*

## NOTES & REMINDERS

- Wear sneakers daily!
- Bring a refillable water bottle
- Bring sunscreen (non-siblings may not share)
- Do NOT allow your child(ren) to bring money, unless otherwise indicated.
- Electronics or cell phones are NOT permitted at camp.
- Bring 2 snacks and a lunch daily (unless it is provided that day)
- Drop-off/Pick-up will be in the loop (on the right when looking at the building)

Questions? 850-245-3843 or edep@fsus.school

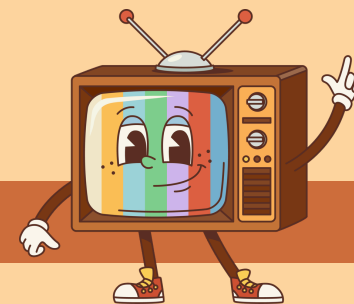




# FSUS SUMMER CAMP 2026



Game Show Network



## WEEK 5 AGENDA: JULY 6<sup>TH</sup> - JULY 10<sup>TH</sup>

Monday	Tuesday	Wednesday	Thursday	Friday
7:30-9:00- AM Stations 9:00-9:30- Snack 9:30-10:00- Opening Assembly 10:00-12:30- Activities & Jeopardy On-Site Event 12:30-1:00- Lunch 1:00- 4:00- Activities & Jeopardy On-Site Event 4:00- 4:30- Snack 4:30-6:00- PM Stations	7:30-9:00- AM Stations 9:00-9:15- Snack 9:15- 9:30- Morning Assembly <b>K-2nd</b> 9:30-10:30- Activities 10:30-1:30- Chuck E. Cheese Field Trip ( <b>Pizza Lunch Provided</b> ) <b>3rd-5th</b> 9:30-1:30- Hangar 38 Field Trip ( <b>Pizza Lunch Provided</b> ) 1:30-4:00- Activities 4:00-4:30- Snack 4:30-6:00- PM Stations	7:30-9:00- AM Stations 9:00-9:15- Snack 9:15- 9:30- Morning Assembly 9:30-11:00- Activities <b>3rd-5th</b> 11:00-1:15- Swimming @ Jack McLean Field Trip 1:15-1:45- Lunch 1:45- 4:00- Activities <b>K-2nd</b> 11:00-11:30- Activities 11:30-12:00- Lunch 12:00- 2:30- Swimming @ Jack McLean Field Trip 2:30-4:00- Activities 4:00-4:30- Snack 4:30-6:00- PM Stations	7:30-9:00- AM Stations 9:00-9:15- Snack 9:15- 1:00- Movies @ CMX Theater Field Trip 1:00-1:30- Lunch 1:30-4:00- Activities 4:00-4:30- Snack 4:30-6:00- PM Stations	7:30-9:00- AM Stations 9:00-9:15- Snack 9:15- 9:30- Morning Assembly 9:30-12:30- Activities & Silent Disco On-Site 12:30-1:00- Lunch 1:00-3:30- Activities & Silent Disco On-Site 3:30-4:00- Snack 4:00-4:30- Closing Assembly 4:30-6:00- Movie Time!

*Come dressed with swimwear under camp clothes.  
Bring a towel, sunscreen, wet clothes bag, & extra dry clothes if needed*

*Pizza Friday  
\$2/Slice  
Pay at Friday drop-off if you would like your camper to eat pizza for lunch*

### NOTES & REMINDERS

- Wear sneakers daily!
- Bring a refillable water bottle
- Bring sunscreen (non-siblings may not share)
- Do NOT allow your child(ren) to bring money, unless otherwise indicated.
- Electronics or cell phones are NOT permitted at camp.
- Bring 2 snacks and a lunch daily (unless it is provided that day)
- Drop-off/Pick-up will be in the loop (on the right when looking at the building)

Questions? 850-245-3843 or edep@fsus.school

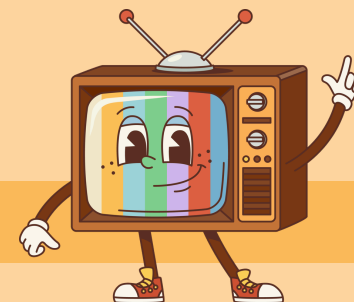




# FSUS SUMMER CAMP 2026



Kids Network



## WEEK 6 AGENDA: JULY 13<sup>TH</sup> - JULY 17<sup>TH</sup>

Monday	Tuesday	Wednesday	Thursday	Friday
7:30-9:00- AM Stations 9:00-9:30- Snack 9:30-10:00- Opening Assembly 10:00-12:30- Activities 12:30-1:00- Lunch 1:00- 4:00- Activities & Slime Making On-Site Event 4:00- 4:30- Snack 4:30-6:00- PM Stations	7:30-9:00- AM Stations 9:00-9:15- Snack 9:15- 9:30- Morning Assembly & Bus Loading 9:30-1:00- Gulf Marine Specimen Lab Field Trip 1:00-1:30- Lunch 1:30-4:00- Activities 4:00-4:30- Snack 4:30-6:00- PM Stations	7:30-9:00- AM Stations 9:00-9:15- Snack 9:15- 9:30- Morning Assembly 9:30-12:00- Activities 12:00-12:30- Lunch 12:30-3:30- Skating @ Skateworld Field Trip 3:30-4:00- Activities 4:00-4:30- Snack 4:30-6:00- PM Stations	7:30-9:00- AM Stations 9:00-9:15- Snack 9:15- 9:30- Morning Assembly 9:30-11:00- Activities <b>3rd-5th</b> 11:00-1:15- Swimming @ Jack McLean Field Trip 1:15-1:45- Lunch 1:45- 4:00- Activities <b>K-2nd</b> 11:00-11:30- Activities 11:30-12:00- Lunch 12:00- 2:30- Swimming @ Jack McLean Field Trip 2:30-4:00- Activities 4:00-4:30- Snack 4:30-6:00- PM Stations	7:30-9:00- AM Stations 9:00-9:15- Snack 9:15- 9:30- Morning Assembly 9:30-12:30- Activities & Bounce Houses On-Site 12:30-1:00- Lunch 1:00-3:30- Activities & Bounce Houses & Shaved Ice On-Site 3:30-4:00- Snack 4:00-4:30- Closing Assembly 4:30-6:00- Movie Time!

*Come dressed with swimwear under camp clothes.  
Bring a towel, sunscreen, wet clothes bag, & extra dry clothes if needed*

*Pizza Friday  
\$2/Slice  
Pay at Friday drop-off if you would like your camper to eat pizza for lunch*

## NOTES & REMINDERS

- Wear sneakers daily!
- Bring a refillable water bottle
- Bring sunscreen (non-siblings may not share)
- Do NOT allow your child(ren) to bring money, unless otherwise indicated.
- Electronics or cell phones are NOT permitted at camp.
- Bring 2 snacks and a lunch daily (unless it is provided that day)
- Drop-off/Pick-up will be in the loop (on the right when looking at the building)

Questions? 850-245-3843 or edep@fsus.school

