

Norman Rockwell Elementary

Construction Update #14

April 6, 2026

Rebuild & Enlarge Construction Timeline: April 2025-December 2026



Spring at Norman Rockwell Elementary is showcasing a lot of growth on site as you will see the exterior blossoming with windows, metal panels, and fiber-cement panels. On the inside of the building the process of hanging drywall has begun.



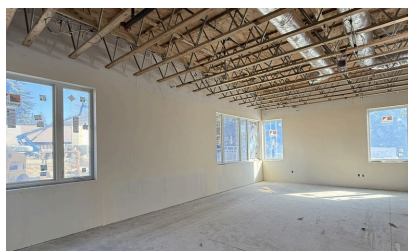
Spring Break will be full of activity for the construction team on site while the Beagles enjoy time off school. The covered play area will be demolished to make room for the new bus loop that connects the new school to the existing parking lot.

Please reach out to Ina Holzer with questions and/or requests for information (contact information below).

Project Team:

LWSD Senior Project Manager, Ina Holzer, iholzer@lwsd.org
Lydig Site Superintendents, Jason Schmidt and Steve Fromm
Lydig Senior Project Manager, Ian McDonald

Learn more: www.lwsd.org/Rockwell-Rebuild



Schedule Update

The new building is on track to welcome students for the 2026-27 school year. Demolition of existing building is scheduled for July 2026 with the last phase of the project – Phase 4 targeted for completion in December 2026. Phase 4 includes the new playground, new parking, and new pick-up/drop-off loop.

Working Hours:

Standard working hours: 7 a.m. – 4 p.m. Monday-Friday
Throughout the course of this project, construction may occur late and/or on work weekends to maintain schedule. In those circumstances, we will abide by the City of Redmond's noise and work hour ordinances (as follows):

7 a.m. – 7 p.m. Monday - Friday

9 a.m. – 6 p.m. Saturday

Not allowed on Sunday/Legal Holidays

Deliveries:

The primary construction entrances will be on 162nd Ave NE. Deliveries will not be allowed outside of our working hours. Deliveries will not occur during pick up and drop off times.

Noise & Vibration:

Lydig adheres to all local and state noise codes. Heavy machinery and construction equipment shall not be operated during non-working hours. Trucks and equipment idling will not be permitted to idle on site before 7 a.m. Please note the back-up alarms on our vehicles and equipment are required by WISHA and cannot be disabled.

Personal Conduct:

All Lydig employees and subcontractors undergo a mandatory safety and personal conduct orientation meeting. This includes, but is not limited to, site regulations on language, harassment, music/radios, tobacco use, litter and leaving/entering the job site.

