



**NORTH SCOTT**  
Community School District

## **NOTICE OF BID LETTING**

On behalf of the North Scott Community School District, sealed bids will be received at the North Scott Community School District Administration Office, 251 East Iowa Street, Eldridge, IA 52748, until 2:00 p.m. local time on May 4, 2026.

Bids will be opened and read aloud at approximately 2:01 p.m. local time on May 4, 2026, at the North Scott Community School District Administration Building, 251 East Iowa Street, Eldridge, IA 52748.

Award of Contract will commence on May 11, 2026, at 6:00 p.m. at the North Scott Community School District Administration Office, 251 East Iowa Street, Eldridge, IA 52748.

Each bidder submitting a formal bid shall accompany the bid with a Bid Security, in a separate envelope, as security that the successful bidder will enter into a contract for the work bid upon and will furnish after the award of the contract corporate surety bond or bonds, acceptable to the Owner, for the faithful performance of the contract, in an amount equivalent to one hundred percent of the amount of the contract.

The bidder's security shall be five (5%) percent of the bid amount and shall be in the form of a cashier's or certified check drawn on a bank in Iowa or a bank chartered under the laws of the United States of America, or a certified bank share draft drawn on a credit union in Iowa or chartered under the laws of the United States of America or a bid bond with corporate surety satisfactory to the Owner.

All bids shall be governed by applicable provisions in the Iowa Code and School Board Policies.

It is the intent of the Owner to award a contract to the lowest responsible bidder meeting specifications, provided the bid has been submitted in accordance with the bidding requirements. The Owner further reserves the right to reject any bids or any part thereof, and to waive any informalities or irregularities and enter into such contract or contracts as shall be deemed in the best interest of North Scott Community School District.

Published by order of the Board of Education of the North Scott Community School District.

Joe Stutting, Superintendent



**GATE FRAMES:** The gate frames shall be made of 1 5/8" OD WT40 pipe weighing 1.836 lb./per lin. ft. filled with fabric to match the line of fence. Gates to be securely braced to prevent sagging. (2) 15 ft. double drive, (1) 8 ft. single swing, (1) 4 ft. with panic latch. The gates will be placed (1) 15 ft. and (1) 4 ft. at the start of the 190 ft. span. (1) 15 ft. be placed at the 26 ft. span and (1) 8 ft. at the 226 ft. span meeting the building on the West side.

**STANDARD SWING GATE SPECIFICATIONS:**

GATE FRAME	GATE OPENING	LATCH/LOCKS	GATE POST	WEIGHT PER LIN.FT.
1 5/8" O.D.	Single to 6' or Double to 12' Incl.	Standard	2 7/8" O.D.	4.640
1 5/8" O.D.	Single Over 6' to 13' or Double Over 12' to 26' Incl.	Standard	4" O.D.	6.56
1 5/8" O.D.	Single Over 13' to 18' or Double Over 26' to 36' Incl.	Standard	6 5/8" O.D.	18.970
1 5/8" O.D.	Single Over 18' to Double Over 36'	Standard	8 5/8" O.D.	24.700

All gate posts are to be complete with necessary fittings and with brace and truss rod assembly.

**CONCRETE:** All end, corner, gate, and pull posts shall be set into a 12" diameter by a 42" deep concrete footing.

**BRACES:** All fences six feet high and higher shall be braced with a 1 5/8" O.D. WT40 pipe weighing 1.836 lbs./per lin. ft. One brace assembly for each end or gate post and two assemblies for each corner or pull post. Each brace assembly shall be trussed with a 3/8" truss rod. Fences 5' and under delete all bracing.

**FITTINGS:** All necessary fittings shall be furnished to make a complete fence job. All materials not made of aluminum shall be finished with the hot-dipped galvanizing process with a PVC coating of not less than 10 mils.

**TENSION WIRE:** A 7-gauge coil spring tension wire shall be installed approx. 6" off the ground. ASTM A824



# **NORTH SCOTT**

Community School District

**ALTERNATES:** Any substitute materials used must be as heavy or heavier than these specified. \*Note: Equal manufacturers: Wheatland Tube, Century Tube, American Tube, P&H Tube.

**DETAILS:** The project will begin on **June 8, 2026**, and must be completed by **August 14, 2026**. Please note that all provided measurements are estimates; contractors should coordinate with **Andy Hamann** (563-285-9029) to verify exact fence footage and gate locations.

Bids should be submitted for the total project scope; however, contractors must provide separate pricing for each school site.



**John Glenn Elementary Fencing Project**  
**Donahue, Iowa**

**PVC COATED CHAIN LINK FENCE**

**GENERAL:** The fence contractor shall furnish all labor, tools, and equipment and do all necessary to construct a fence, including gates, posts, and accessories as shown on the plans, as directed by the engineer, or as outlined in the specifications.

**STYLE:** The overall height of the fence shall be 6'0" above grade, and the overall length approximately 940 feet.

**FABRIC:** Poly Vinyl Chloride (PVC) color-coated steel chain link fabric per ASTM F668 Class 2b Fused/Bonded. The finished wire shall be woven into a 2" diamond mesh with a knuckled top and bottom selvage. The wire diameter shall be a 9-gauge core wire. Color of chain link fabric per ASTM F934 [Black]

**FRAMEWORK:** All posts, top rail, braces, and gate frames shall be of the WT40 type pipe or equal\* with a zinc coating of 0.9 oz./per sq. ft. of surface. The WT40 pipe shall also have a zinc-rich interior coating of not less than 0.3 mils dry film thickness, with a PVC coating of not less than 10 mils, and in accordance with ASTM F1043.

**TOP RAIL:** The top rail shall be of 1 5/8" OD WT40 pipe weighing 1.836 lb./per lin. ft. complete with expansion sleeves.

**LINE POSTS:** The line post shall be 2 3/8" OD WT40 pipe weighing 3.12 lb./per lin. ft. All line posts are to be evenly spaced in the line of fence, maximum of 10 ft. on center. Line posts to be set into a 10" diameter by a 42" deep concrete footing.

**LINE POST TOPS:** All line posts shall be fitted with a heavy post top of malleable iron, pressed steel, or aluminum.

**TERMINAL POSTS:** End, corner, and pull posts shall be 2 7/8" OD WT40 pipe weighing 4.64 lb./per lin. ft. All necessary fittings and braces shall be furnished to make a complete fence job.



John Glenn



**Virgil Grissom Elementary Fencing Project  
Princeton, Iowa**

**PVC COATED CHAIN LINK FENCE**

**GENERAL:** The fence contractor shall furnish all labor, tools, and equipment and do all necessary to construct a fence, including gates, posts, and accessories as shown on the plans, as directed by the engineer, or as outlined in the specifications.

**STYLE:** The overall height of the fence shall be 6'0" above grade, and the overall length approximately 1,100 feet.

**FABRIC:** Poly Vinyl Chloride (PVC) color-coated steel chain link fabric per ASTM F668 Class 2b Fused/Bonded. The finished wire shall be woven into a 2" diamond mesh with a knuckled top and bottom selvage. The wire diameter shall be a 9-gauge core wire. Color of chain link fabric per ASTM F934 [Black]

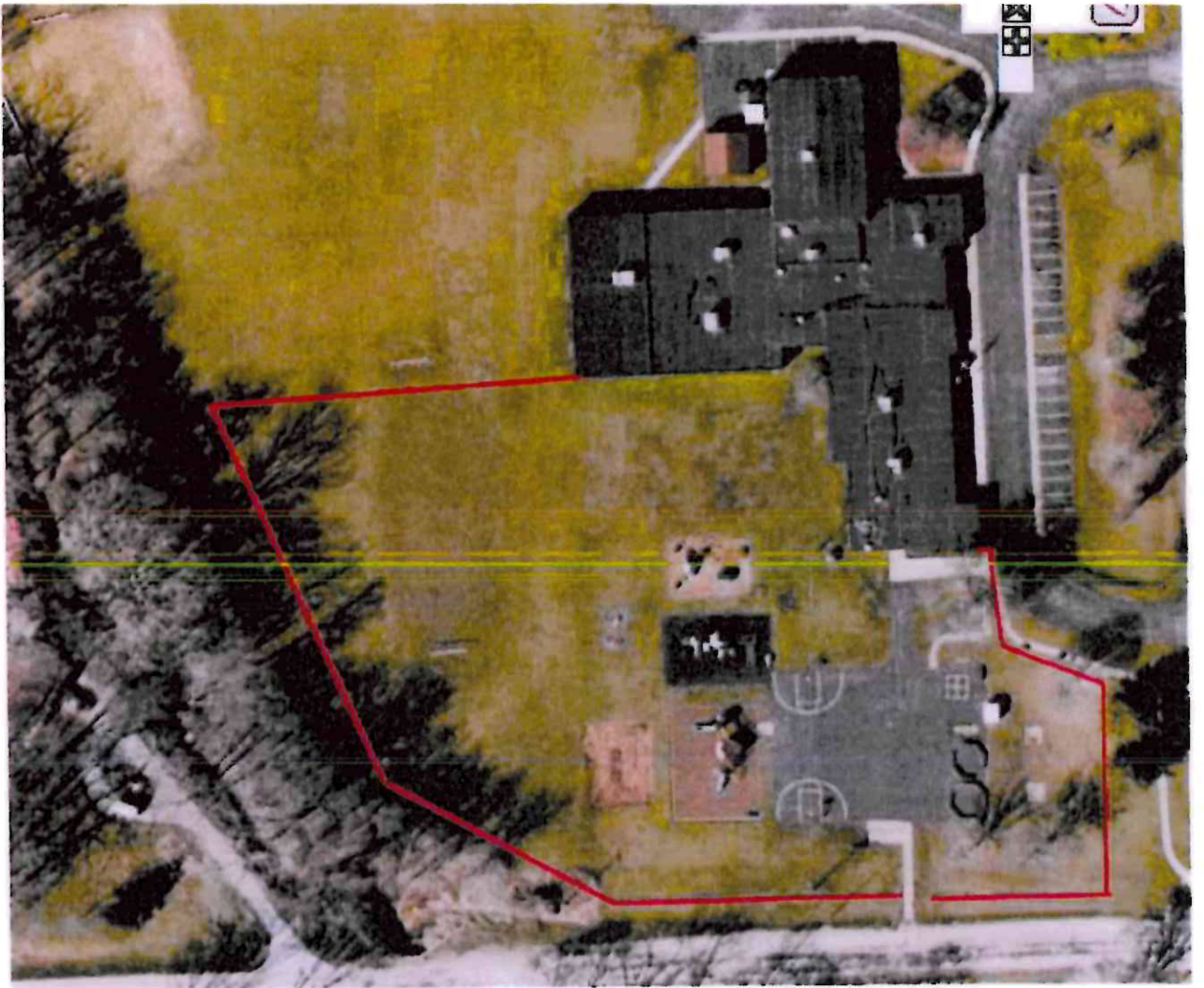
**FRAMEWORK:** All posts, top rail, braces, and gate frames shall be of the WT40 type pipe or equal\* with a zinc coating of 0.9 oz./per sq. ft. of surface. The WT40 pipe shall also have a zinc-rich interior coating of not less than 0.3 mils dry film thickness, with a PVC coating of not less than 10 mils, and in accordance with ASTM F1043.

**TOP RAIL:** The top rail shall be of 1 5/8" OD WT40 pipe weighing 1.836 lb./per lin. ft. complete with expansion sleeves.

**LINE POSTS:** The line post shall be 2 3/8" OD WT40 pipe weighing 3.12 lb./per lin. ft. All line posts are to be evenly spaced in the line of fence, maximum of 10 ft. on center. Line posts to be set into a 10" diameter by a 42" deep concrete footing.

**LINE POST TOPS:** All line posts shall be fitted with a heavy post top of malleable iron, pressed steel, or aluminum.

**TERMINAL POSTS:** End, corner, and pull posts shall be 2 7/8" OD WT40 pipe weighing 4.64 lb./per lin. ft. All necessary fittings and braces shall be furnished to make a complete fence job.



Virgil Grissom



**NORTH SCOTT**  
Community School District

**Neil Armstrong Fencing Project**  
**Park View, Iowa**

**PVC COATED CHAIN LINK FENCE**

**GENERAL:** The fence contractor shall furnish all labor, tools, and equipment and do all necessary to construct a fence, including gates, posts, and accessories as shown on the plans, as directed by the engineer, or as outlined in the specifications.

**STYLE:** The overall height of the fence shall be 6'0" above grade, and the overall length approximately 925 feet.

**FABRIC:** Poly Vinyl Chloride (PVC) color-coated steel chain link fabric per ASTM F668 Class 2b Fused/Bonded. The finished wire shall be woven into a 2" diamond mesh with a knuckled top and bottom selvage. The wire diameter shall be a 9-gauge core wire. Color of chain link fabric per ASTM F934 [Black]

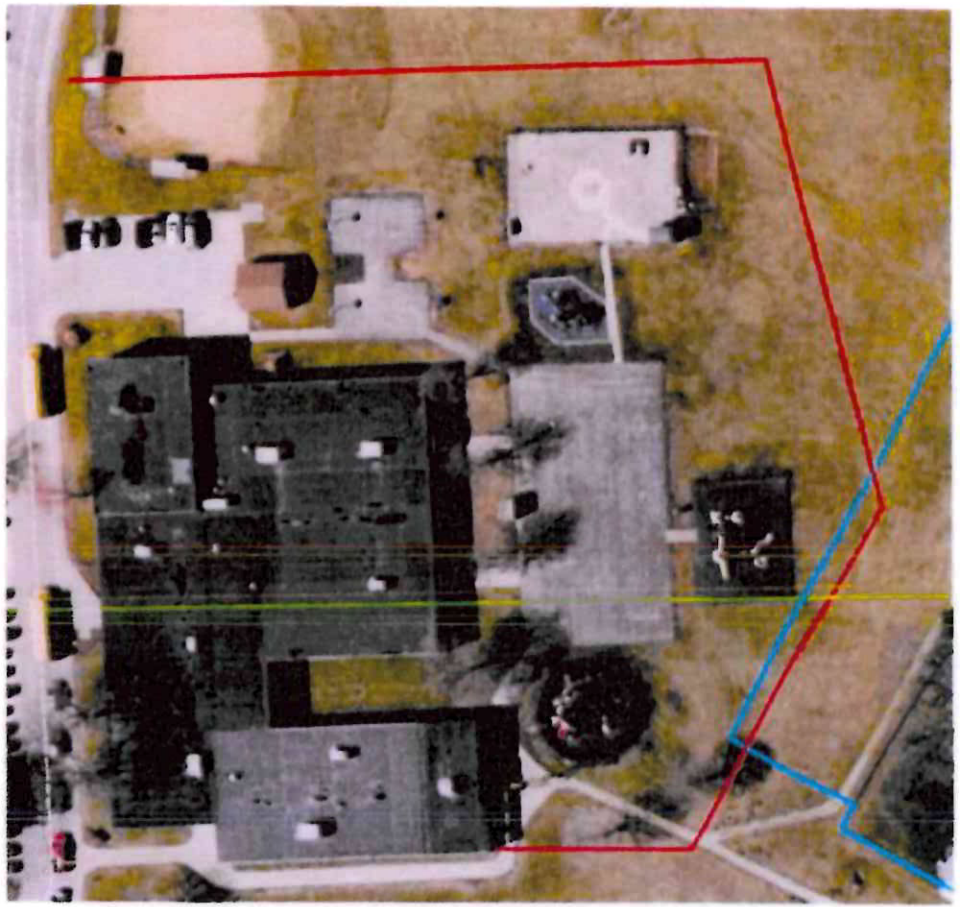
**FRAMEWORK:** All posts, top rail, braces, and gate frames shall be of the WT40 type pipe or equal\* with a zinc coating of 0.9 oz./per sq. ft. of surface. The WT40 pipe shall also have a zinc-rich interior coating of not less than 0.3 mils dry film thickness, with a PVC coating of not less than 10 mils, and in accordance with ASTM F1043.

**TOP RAIL:** The top rail shall be of 1 5/8" OD WT40 pipe weighing 1.836 lb./per lin. ft. complete with expansion sleeves.

**LINE POSTS:** The line post shall be 2 3/8" OD WT40 pipe weighing 3.12 lb./per lin. ft. All line posts are to be evenly spaced in the line of fence, maximum of 10 ft. on center. Line posts to be set into a 10" diameter by a 42" deep concrete footing.

**LINE POST TOPS:** All line posts shall be fitted with a heavy post top of malleable iron, pressed steel, or aluminum.

**TERMINAL POSTS:** End, corner, and pull posts shall be 2 7/8" OD WT40 pipe weighing 4.64 lb./per lin. ft. All necessary fittings and braces shall be furnished to make a complete fence job.



Neil Armstrong



**Ed White Elementary Fencing Project  
Eldridge, Iowa**

**PVC COATED CHAIN LINK FENCE**

**GENERAL:** The fence contractor shall furnish all labor, tools, and equipment and do all necessary to construct a fence, including gates, posts, and accessories as shown on the plans, as directed by the engineer, or as outlined in the specifications.

**STYLE:** The overall height of the fence shall be 6'0" above grade, and the overall length approximately 670 feet.

**FABRIC:** Poly Vinyl Chloride (PVC) color-coated steel chain link fabric per ASTM F668 Class 2b Fused/Bonded. The finished wire shall be woven into a 2" diamond mesh with a knuckled top and bottom selvage. The wire diameter shall be a 9-gauge core wire. Color of chain link fabric per ASTM F934 [Black]

**FRAMEWORK:** All posts, top rail, braces, and gate frames shall be of the WT40 type pipe or equal\* with a zinc coating of 0.9 oz./per sq. ft. of surface. The WT40 pipe shall also have a zinc-rich interior coating of not less than 0.3 mils dry film thickness, with a PVC coating of not less than 10 mils, and in accordance with ASTM F1043.

**TOP RAIL:** The top rail shall be of 1 5/8" OD WT40 pipe weighing 1.836 lb./per lin. ft. complete with expansion sleeves.

**LINE POSTS:** The line post shall be 2 3/8" OD WT40 pipe weighing 3.12 lb./per lin. ft. All line posts are to be evenly spaced in the line of fence, maximum of 10 ft. on center. Line posts to be set into a 10" diameter by a 42" deep concrete footing.

**LINE POST TOPS:** All line posts shall be fitted with a heavy post top of malleable iron, pressed steel, or aluminum.

**TERMINAL POSTS:** End, corner, and pull posts shall be 2 7/8" OD WT40 pipe weighing 4.64 lb./per lin. ft. All necessary fittings and braces shall be furnished to make a complete fence job.



Ed WINTe