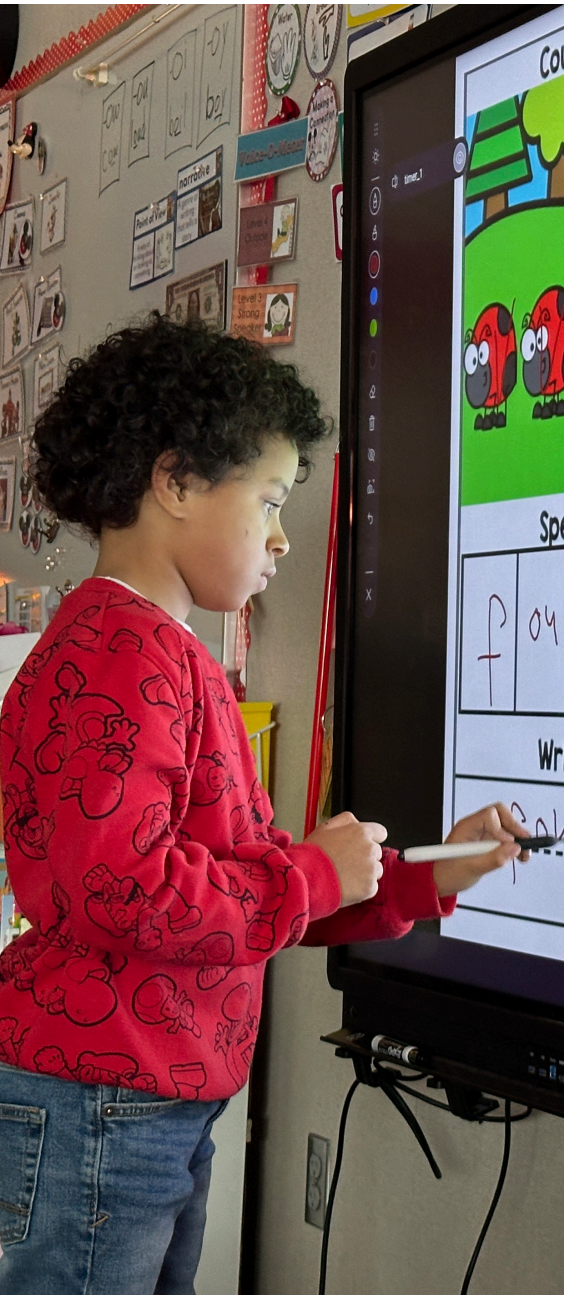




SOUTH ST. PAUL PUBLIC SCHOOLS

A LEGACY WORTH PROTECTING



On May 12, 2026, voters will consider two ballot questions for South St. Paul Schools:

QUESTION 1: BUILDING BOND AUTHORIZATION

Shall the school board of Special School District No. 6 (South St. Paul Public Schools) be authorized to issue its general obligation school building bonds in an amount not to exceed \$50,000,000 to provide funds for the acquisition and betterment of school sites and facilities, including the construction and installation of HVAC and electrical infrastructure improvements at school sites and facilities; remodeling and renovations to locker rooms and restrooms; learning space renovations at school sites and facilities; and the maintenance of activity facilities, including Ettinger Field and the Roosevelt Tennis Courts?

QUESTION 2: CAPITAL PROJECTS LEVY RENEWAL

The school board of Special School District No. 6 (South St. Paul Public Schools) has also proposed to renew the school district's existing capital project levy authorization of 3.74709208482% times the net tax capacity of the school district, which is scheduled to expire after taxes payable in 2029. The money raised from the capital project levy authorization will provide funds for the acquisition, installation, replacement, support and maintenance of classroom technology, software, computers, student devices, improved technology systems, networks, infrastructure, instructional technology, safety and security systems, and related training and personnel costs; deferred maintenance projects and the acquisition of curriculum, textbooks and materials. The proposed capital project levy authorization will raise approximately \$1,139,395 for taxes payable in 2030, the first year it is to be levied, and would be authorized for ten years. The estimated total cost of the projects to be funded over that time period is approximately \$11,393,950. The projects have received a positive Review and Comment from the Commissioner of Education.

Shall the capital project levy authorization proposed by the school board of Special School District No. 6 be approved?

Above is the official ballot language required by law, and while it may be complex, we are including it so you can see exactly what voters will see.

WHY NOW?

1 ADDRESS AGING INFRASTRUCTURE

South St. Paul Public Schools maintains several buildings that are 70 to more than 100 years old. A comprehensive facilities review identified more than **\$150 million** in deferred maintenance needs across the district.

2 FUNDING GAP FOR MAJOR REPAIRS

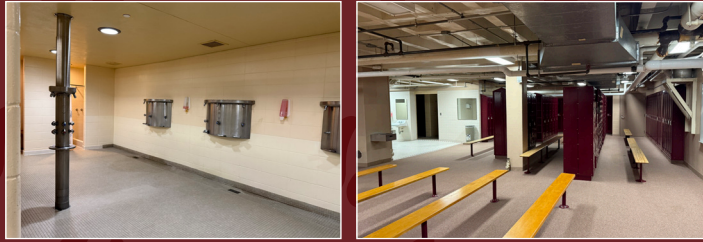
SSP receives about **\$1 million annually** for facility maintenance, while industry guidelines recommend reinvesting **2 to 4% of a building's value** each year. This gap limits funding to basic repairs and has led to a growing backlog of deferred maintenance.

3 RESPONSIBLE TIMING

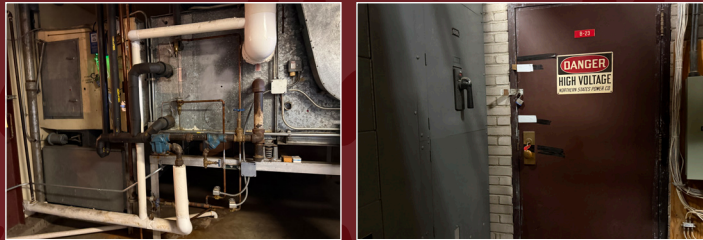
As the 2013 school bond nears payoff, this election allows the district to **reinvest expiring funds** responsibly, minimize taxpayer impact, and complete work during summer months when school is not in session, avoiding more costly emergency repairs in the future.

TARGETED IMPROVEMENT AREAS

Current Middle/High School Locker Room Conditions



Current Electrical Units



Current Air Handler System



Historical Ettinger Field



Current Consumer Science Lab



Current Tennis Court Conditions



QUESTION 1: HOW WILL THE FUNDS BE SPENT?

All Question 1 projects include design, permitting, and construction-related costs.

SOUTH ST. PAUL SECONDARY (Grades 6–12) | 368,000 sq. ft. | \$30 Million

- 🔧 **Building Systems Upgrades.** Replace outdated electrical, heating, cooling, and ventilation systems, including upgrades to the main power infrastructure. The project would relocate the building's power connection to the exterior, transferring maintenance responsibility to the utility provider. This change improves system reliability, enhances safety, and reduces long-term costs for the district.
- 🔧 **Roof and Exterior Repairs.** Repair roof sections and brickwork to prevent leaks and protect the building.
- 🔧 **Interior Improvements.** Update aged locker rooms and interior finishes to improve safety, functionality, and ADA accessibility.
- 🔧 **Outdoor Improvements.** Reconstruct Ettinger Field, including bleachers, press box, and lighting, and improve safety and ADA access. Portions of the field date back to the 1930s.
- 🔧 **ADA Accessibility Improvements.** Improve select entrances, seating, restrooms, and pathways to increase access to programs and events.
- 🔧 **Packer Pathways Learning Spaces.** Updates to select learning spaces will support hands-on, career-connected experiences for students:
 - » **Industrial Technology Lab** - support trades, construction, and problem-solving
 - » **Consumer Science Lab** - build practical life skills and explore culinary and hospitality careers
 - » **Business and Entrepreneurship Center and School Store** - create a student-run retail space where students gain real-world experience in business, marketing, and entrepreneurship.

What this means: Fewer disruptions, comfortable classrooms, safer and more accessible spaces, and learning environments aligned to student interests.

LINCOLN CENTER ELEMENTARY (PreK–5) 181,000 sq. ft. | \$15 million

- 🔧 **Building Systems Upgrades.** Replace outdated electrical, heating, cooling, and ventilation systems, including upgrades to the main power infrastructure. The project would relocate the building's power connection to the exterior, transferring maintenance responsibility to the utility provider. This change improves system reliability, enhances safety, and reduces long-term costs for the district.
- 🔧 **Restroom Renovations.** Remodel restrooms to improve functionality and ADA accessibility.
- 🔧 **Health and Safety Improvements.** Address asbestos where needed.

What this means: Reliable systems, updated and accessible restrooms, and safe, well-maintained spaces for students.

WHY ISN'T ANNUAL FUNDING ENOUGH?

South St. Paul Public Schools maintains **768,397 square feet** of school facilities. Industry guidelines recommend reinvesting **2 to 4 percent of a building's replacement value each year** to keep facilities in good condition.

- 🔧 Based on current facilities, that benchmark equals **\$7.8 to \$15.6 million annually**
- 🔧 The district currently receives about **\$1 million per year** for facility maintenance
- 🔧 That funding supports basic repairs and emergency needs only
- 🔧 Over time, the gap between available funding and actual needs has led to a buildup of deferred maintenance

A **voter-approved bond referendum** is one of the primary ways public school districts address large-scale facility needs beyond what annual funding can cover.

CENTRAL SQUARE COMMUNITY CENTER 43,000 sq. ft. | \$3.4 million

Home to the district pool, community education, and senior programming.

- 🔧 **Building Systems Upgrades.** Replace aged electrical and mechanical systems. Pool moisture and chlorine accelerate wear, increasing the need for replacement.
- 🔧 **Restroom Renovations.** Remodel aged restroom facilities to improve ADA accessibility and usability for all users.
- 🔧 **Health and Safety Improvements.** Address asbestos where needed to maintain a safe environment.

What this means: Reliable spaces for programs, improved accessibility, and safe, welcoming facilities for the community.

ROOSEVELT TENNIS COURTS Estimated Investment: \$1.6 million

- 🔧 **Court Reconstruction.** Replace existing courts with new asphalt, surfacing, and nets to improve safety and playability.
- 🔧 **Accessibility and Usability Improvements.** Improve surrounding areas for safer movement and better access.

What this means: Safer, more reliable courts for school and community use.

QUESTION 2: HOW WILL THE FUNDS BE SPENT?

CAPITAL PROJECTS LEVY RENEWAL

- 🔧 **Security Cameras.** Update and improve security camera systems to support safe school environments and reliable monitoring across all buildings.
- 🔧 **Communication Systems.** Update and strengthen communication systems including phone systems and other tools, to support school operations, emergency response, and strengthen connections with families and the community.
- 🔧 **Technology Infrastructure.** Update and strengthen network systems, hardware, and technology infrastructure to support teaching, learning, and district operations.
- 🔧 **Cybersecurity.** Strengthen cybersecurity to protect district systems and sensitive information by preventing, detecting, and responding to cyber threats

POTENTIAL FACILITY IMPROVEMENTS

If approved, staff, families, and community members will have opportunities to provide input, where appropriate, during the planning of projects.





SSP South St. Paul
Public Schools

104 5th Avenue South
South St. Paul, MN 55075

NON-PROFIT
ORGANIZATION
U.S. POSTAGE
PAID
PERMIT #134
SOUTH ST. PAUL, MN

**SPECIAL ELECTION
VOTING INFORMATION**
TUESDAY, MAY 12, 2026

ELECTION DAY VOTING

For this election only, **ALL VOTERS** will vote at:

LAWSHE MUSEUM

130 3RD AVE N, SOUTH ST. PAUL
(ACROSS THE STREET FROM CITY HALL)
7:00 AM-8:00 PM

ABSENTEE VOTING

For the School District Special Election will begin on Friday, March 27th, 2026, at:

SOUTH ST. PAUL CITY HALL

125 3rd Avenue North
Monday-Friday | 8:00 am - 4:30 pm

DAKOTA COUNTY ADMINISTRATION CENTER

1590 Highway 55, Hastings
Monday -Friday | 8:00 am - 4:30 pm

Also:

Saturday, May 9 | 9:00-3:00 pm

Monday, May 11 | 8:00-5:00 pm

**ECRWSS
POSTAL CUSTOMER
SOUTH ST. PAUL, MN 55075**

WHAT WILL IT COST ME?

Estimated tax impacts vary by property value. The table below shows the estimated annual and monthly cost of **Question 1, the building bond. Question 2, the capital projects levy renewal, maintains the current levy rate and would not result in a tax increase.**



ESTIMATED ANNUAL TAX IMPACT
Three Home Values (Bond Referendum Only)

| HOME VALUES | ANNUAL | MONTHLY |
|-------------|----------|---------|
| \$100,000 | \$31.00 | \$3.00 |
| \$300,000 | \$139.00 | \$12.00 |
| \$400,000 | \$192.00 | \$16.00 |



A full breakdown of the tax impact can be found by scanning the QR code or visit the Bond-Levy-2026 webpage.

LEARN MORE ABOUT THE REFERENDUM



Scan the QR code or visit <https://www.sspps.org/newsroom/elections/bond-levy-2026>