

**BID ADDENDUM NO. 2**

**OWNER:** EDGEMONT SCHOOL DISTRICT

**PROJECT NAME:** HIGH SCHOOL RESOURCE & BUILDING E RENOVATIONS  
& ATHLETIC FIELD RECONSTRUCTION

This Addendum is hereby included in and made a part of the Contract Documents, dated March 24, 2026 whether or not attached thereto.

All requirements of the original project specifications and drawings shall remain in force except as amended by this addendum.

DATE: March 31, 2026

This addendum consists of one (1) page plus revised drawings HS-F E100, HS-F E101, HS-F E110 and HS-F E200.

***THE FOLLOWING ARE MODIFICATIONS, CLARIFICATIONS, DELETIONS OR ADDITIONS TO THE SPECIFICATIONS:***

**01 1000 – SUMMARY OF CONTRACTS**

**ADD** Milestone Schedule attached to this addendum.

***THE FOLLOWING ARE MODIFICATIONS, CLARIFICATIONS, DELETIONS OR ADDITIONS TO THE DRAWINGS:***

**DRAWING HS-F E100 – FIELD ELECTRICAL PLAN - WEST**

**DELETE** drawing and replace with revised drawing attached to this addendum.

**DRAWING HS-F E101 – FIELD ELECTRICAL PLAN - NORTH**

**DELETE** drawing and replace with revised drawing attached to this addendum.

**DRAWING HS-F E110 – FIELD ELECTRICAL ENLARGED POWER PLAN & SCHEDULES**

**DELETE** drawing and replace with revised drawing attached to this addendum.

**DRAWING HS-F E200 – FIELD ELECTRICAL DIAGRAMS AND DETAILS**

**DELETE** drawing and replace with revised drawing attached to this addendum.

**END OF SED ADDENDUM NO. 2**

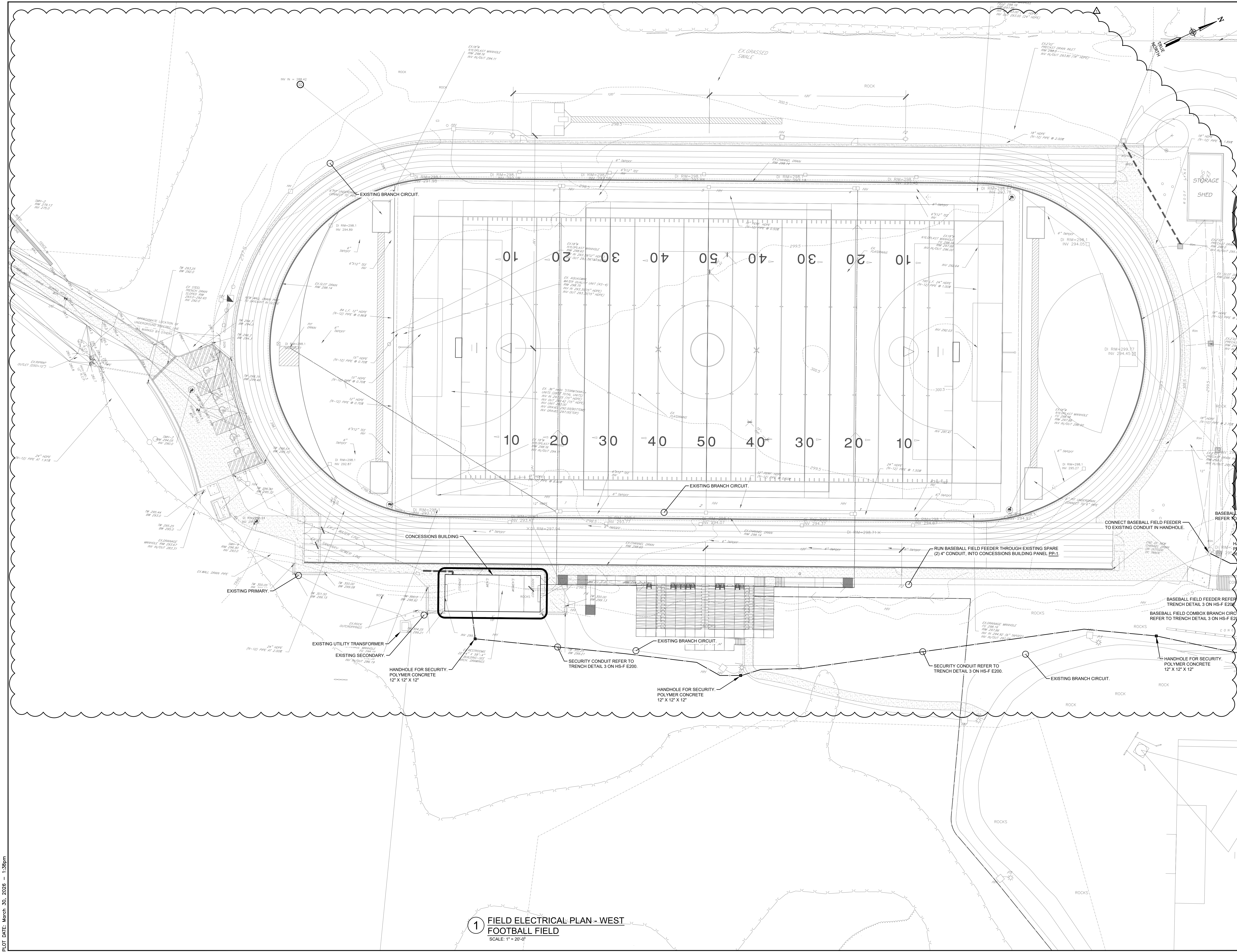
The following attachments are being provided for informational purposes:

**Bidder RFI Responses** (In the event of a discrepancy between these responses and the contract documents, the contract documents shall prevail unless modified by addendum.)

Bid RFI-#001 dated 3/27/2026 (3 pages).

Bid RFI-#002 dated 3/26/2026 (2 pages).

Bid RFI-#003 dated 3/25/2026 (3 pages).



**1 FIELD ELECTRICAL PLAN - WEST**  
**FOOTBALL FIELD**  
 SCALE: 1" = 20'-0"

AS PER USA CONGRESS ARCHITECTURAL WORKS COPYRIGHT PROTECTION ACT OF 1990 ALL IDEAS AND DESIGNS INCLUDING DERIVATIVES THEREOF, ALL DRAWINGS AND SPECIFICATIONS CONSTITUTE THE ORIGINAL COPYRIGHT WORK BY FULLER AND DANKELO, P.C. (F&D). THE DRAWINGS AND SPECIFICATIONS AS INSTRUMENTS OF SERVICE BY F&D ARE CREATED BY F&D FOR THIS PROJECT ONLY AND REMAIN THE PROPERTY OF F&D. ANY REPRODUCTION WITHOUT THE PRIOR CONSENT OF F&D IS PROHIBITED.

**LFG**  
 LANDMARK FACILITIES GROUP, INC.  
 252 East Avenue  
 Roseland, NJ 07068  
 (201) 966-4623 T.D.  
 (201) 966-4919 Fax

ALTERATION OF THESE DOCUMENTS EXCEPT BY A VOUCHER OF NEW YORK STATE EDUCATION LAW.  
 480 MILLVILLE ROAD, ELIZABETH, NEW JERSEY 07208  
 TEL: 973-682-4444 FAX: 973-682-1179  
 Copyright 2025. All Rights Reserved by FULLER & DANKELO, P.C.

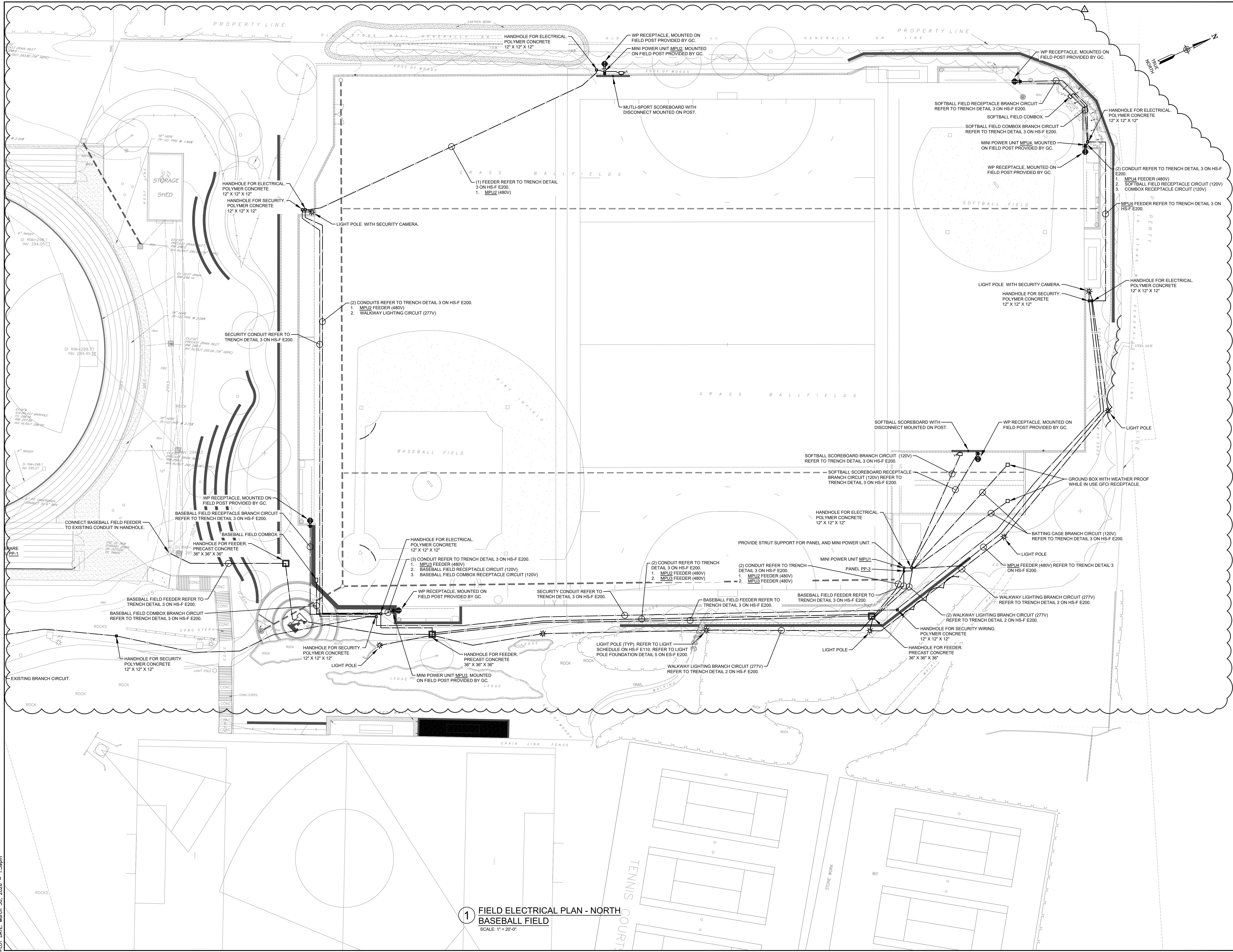
**FULLER DANKELO P.C.**  
 ARCHITECTS PLANNERS

LICENSE EXP. DATE: 03-31-2026

S.E.D. CONTROL NUMBER:  
 RESOURCE BUILDING  
 66-04-06-03-016-006  
 BUILDING E  
 66-04-06-03-016-005

EDGEMONT SCHOOL DISTRICT HIGH SCHOOL RESOURCE & BUILDING E FIELD ELECTRICAL PLAN - WEST RECONSTRUCTION		DRAWING TITLE FIELD ELECTRICAL PLAN - WEST	
3-31-2026	BID ADDENDUM 2		
3-16-2026	BID		
1-30-2026	SED ADDENDUM 1		
11-24-2025	SED SUBMISSION		
DATE	ISSUED TO		
SHEET SIZE 30"x42"	DRAWING NO. <b>HS-F</b>		
SCALE AS NOTED	<b>E100</b>		
DRAWN BY LFG	FILE NO. <b>24529.06</b>		

PLOT DATE: March 30, 2026 - 1:38pm



**1** FIELD ELECTRICAL PLAN - NORTH  
**BASEBALL FIELD**  
 SCALE: 1" = 20'-0"

AS PER USA CONGRESS ARCHITECTURAL WORKS COPYRIGHT PROTECTION ACT OF 1990 ALL IDEAS AND DESIGNS INCLUDING DERIVATIVES THEREOF, ALL DRAWINGS AND SPECIFICATIONS CONSTITUTE THE ORIGINAL COPYRIGHT WORK BY FULLER AND DANIELO, P.C. (F&D). THE DRAWINGS AND SPECIFICATIONS AS INSTRUMENTS OF SERVICE BY F&D ARE CREATED BY F&D FOR THIS PROJECT ONLY AND REMAIN THE PROPERTY AND PROPERTY OF F&D. ANY REPRODUCTION WITHOUT THE PRIOR CONSENT OF F&D IS PROHIBITED.



ALLEGATION OF THESE DOCUMENTS EXCEPT BY A VIOLATION OF NEW YORK STATE EDUCATION LAW.  
 48 SHULLKILL ROAD, ELIZABETH, NEW JERSEY 07208  
 TEL: 973-689-4444 FAX: 973-689-1319  
 Copyright © 2025. All Rights Reserved by FULLER & DANIELO, P.C.

**FULLER DANIELO P.C.**  
 ARCHITECTS PLANNERS

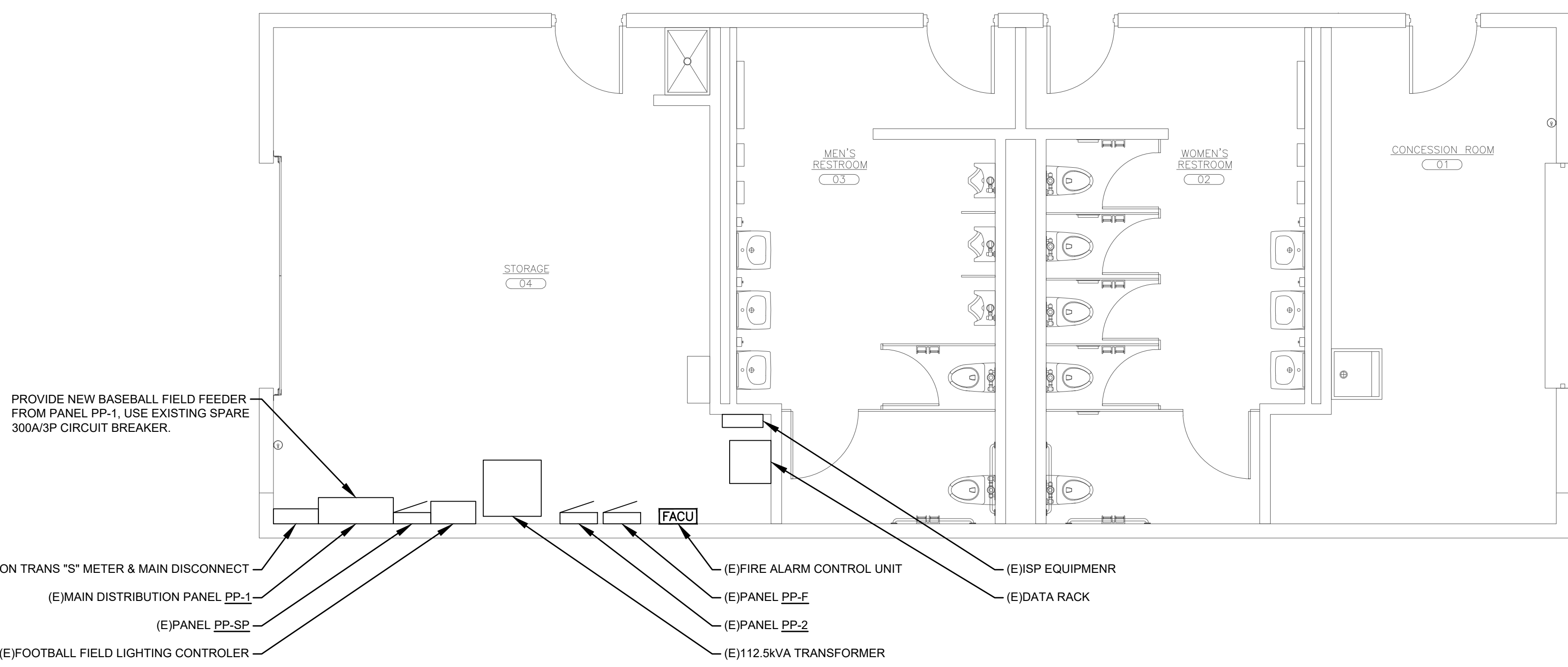
LICENSE EXP. DATE: 03-31-2026

S.E.D. CONTROL NUMBER:  
 RESOURCE BUILDING  
 66-04-06-03-010-006  
 BUILDING E  
 66-04-06-03-016-005

EDGEMONT SCHOOL DISTRICT  
 HIGH SCHOOL RESOURCE & BUILDING E  
 RECONSTRUCTION  
 500 WHITE OAK LANE, SCARSDALE, NY 10583  
 DRAWING TITLE:  
 FIELD ELECTRICAL PLAN - NORTH

3-31-2026	BID ADDENDUM 2
3-18-2026	BID
1-30-2026	SED ADDENDUM 1
11-24-2025	SED SUBMISSION
DATE	ISSUED TO
SHEET SIZE 30"x42"	DRAWING NO. <b>HS-F</b>
SCALE AS NOTED	<b>E101</b>
DRAWN BY LFG	FILE NO. 24529.06

PLOT DATE: March 30, 2026 - 1:39pm



**1 CONCESSIONS BUILDING ELECTRICAL PLAN**  
SCALE: 1/4" = 1'-0"

- PANEL NOTES:**  
 1 - PROVIDE HACR TYPE CIRCUIT BREAKER  
 2 - PROVIDE LOCKING CLIPS  
 3 - PROVIDE MEANS OF LOCKING CIRCUIT BREAKER IN OFF POSITION  
 4 - VERIFY POWER REQUIREMENTS FOR ACTUAL EQUIPMENT BEFORE INSTALLATION  
 5 - CIRCUIT CONTROLLED VIA TIMECLOCK

- CIRCUIT BREAKER TYPE:**  
 GF - GROUND FAULT CIRCUIT INTERRUPTER FOR PERSONNEL  
 AF - ARC FAULT CIRCUIT INTERRUPTER  
 DF - DUAL FUNCTION (GF & AF)  
 ST - SHUNT TRIP

- TRIP UNIT TYPE:**  
 TM - THERMAL MAGNETIC  
 LI - LONG-TIME + INSTANTANEOUS PROTECTION  
 LSI - LONG-TIME + SHORT-TIME + INSTANTANEOUS PROTECTION  
 LSIG - LONG-TIME + SHORT-TIME + INSTANTANEOUS + GROUND FAULT PROTECTION

**LIGHTING FIXTURE SCHEDULE**

TAG	DESCRIPTION	MANUFACTURER AND CATALOG NUMBER	VOLTS	WATTAGE	COLOR TEMP.	LUMENS	EMERG. ENCY.	NOTES
P	Walkway Pole Mounted Light Fixture Type 2 Distribution Photocell Receptacle	Philips Ecoform Luminaire: ECF-1-1-2-215LA-641A-NV-UNV-BRP-PCR7 POLE: RM-STB-12L-D1-BRP	277V	211W	4000K	21,255LM	N	

**EXISTING PANEL PP-1 SCHEDULE**

SYSTEM VOLTAGE: 480Y/277Vac, WYE, 3 PHASE, 4 WIRE  
 BRANCH POLES: 42 POLES  
 MOUNTING: SURFACE (HINGED)  
 ENCLOSURE: NEMA 1  
 EXISTING MODEL: GE Spectra Series APNB Heat Rated Bolt-On Style

PHASE BUS: 800 A  
 NEUTRAL BUS: 800 A  
 MAIN CIRCUIT BREAKER: 800 A  
 SCRR: 42 kA  
 IR: 50 KA

Description	Notes	Wire	Ground	Conduit	BRKR	Type	Pole	PH-A	PH-B	PH-C	Pole	Type	BRKR	Conduit	Ground	Wire	Notes	Description
Spare					60A		1											Spare
Walkway Lighting					20A		2											Spare
Space							3											Spare
Space							4											Spare
Space							5											Spare
Space							6											Spare
Space							7											Spare
Space							8											Spare
Space							9											Spare
Space							10											Spare
Space							11											Spare
Space							12											Spare
Space							13											Spare
Space							14											Spare
Space							15											Spare
Space							16											Spare
Space							17											Spare
Space							18											Spare
Space							19											Spare
Space							20											Spare
Space							21											Spare
Space							22											Spare
Space							23											Spare
Space							24											Spare
Space							25											Spare
Space							26											Spare
Space							27											Spare
Space							28											Spare
Space							29											Spare
Space							30											Spare
Space							31											Spare
Space							32											Spare
Space							33											Spare
Space							34											Spare
Space							35											Spare
Space							36											Spare
Space							37											Spare
Space							38											Spare
Space							39											Spare
Space							40											Spare
Space							41											Spare
Space							42											Spare
Future Baseball Field	(2) Sets:	500	2/0	4"	300A			3592		2940								Sub-Feed #1
								Total - A Phase	Total - B Phase	Total - C Phase								
								3.6 kVA	2.9 kVA	2.4 kVA								
								13 A	11 A	9 A								
								9.0 kVA	kVA =	11 AMP								
								11.2	kVA =	13 AMP								

**NEW PANEL PP-3 SCHEDULE**

SYSTEM VOLTAGE: 480Y/277Vac, WYE, 3 PHASE, 4 WIRE  
 BRANCH POLES: 42 POLE  
 MOUNTING: SURFACE (HINGED)  
 ENCLOSURE: NEMA 3R  
 BASIS OF DESIGN: SQUARE D N D F

PHASE BUS: 400 A  
 NEUTRAL BUS: 400 A  
 MAIN CIRCUIT BREAKER: 300 A  
 SCRR: 18 kA  
 IR: 18 kA

Description	Notes	Wire	Ground	Conduit	BRKR	Type	Pole	PH-A	PH-B	PH-C	Pole	Type	BRKR	Conduit	Ground	Wire	Notes	Description
Mini Power Unit MPU1 (Batting Cages)		3	12	12	1"	20A		1	2028	844								Walkway Lighting
Mini Power Unit MPU2 (Multi-Sport Scoreboard)		3	8	8	1"	15A		5	360									Walkway Lighting
Mini Power Unit MPU3 (Baseball Field)		3	10	10	1"	15A		11		360								Space
Mini Power Unit MPU4 (Softball Field)		3	10	10	1"	15A		13	360									Space
Space								15										Space
Space								16										Space
Space								17										Space
Space								18										Space
Space								19										Space
Space								20										Space
Space								21										Space
Space								22										Space
Space								23										Space
Space								24										Space
Space								25										Space
Space								26										Space
Space								27										Space
Space								28										Space
Space								29										Space
Space								30										Space
Space								31										Space
Space								32										Space
Space								33										Space
Space								34										Space
Space								35										Space
Space								36										Space
Space								37										Space
Space								38										Space
Space								39										Space
Space								40										Space
Space								41										Space
Space								42										Space
								Total - A Phase	Total - B Phase	Total - C Phase								
								3.6 kVA	2.9 kVA	2.4 kVA								
								13 A	11 A	9 A								
								9.0 kVA	kVA =	11 AMP								
								11.2	kVA =	13 AMP								

**MINI POWER UNIT PANEL MPU1**

SYSTEM VOLTAGE: 120/240Vac, 1 PHASE, 3 WIRE  
 BRANCH POLES: 12 POLES  
 MOUNTING: MINI POWER UNIT  
 ENCLOSURE: NEMA 3R  
 BASIS OF DESIGN: SQUARE D MPU340F

PHASE BUS: 125 A  
 NEUTRAL BUS: 125 A  
 MAIN CIRCUIT BREAKER: 40 A  
 SCRR: 10 kA  
 IR: 10 kA

Description	Notes	Wire	Ground	Conduit	BRKR	Type	Pole	PH-A	PH-B	PH-C	Pole	Type	BRKR	Conduit	Ground	Wire	Notes	Description
Softball Scoreboard		12	12	1/2"	15A	GF	3	528										Main Circuit Breaker
Rcpt-Scoreboard GFCI		12	12	1/2"	15A	GF	3		360									Space
Rcpt-Batting Cage Ground Box		12	12	1/2"	20A	GF	5	1500										Space
Rcpt-Batting Cage Ground Box		12	12	1/2"	20A	GF	7		1500									Space
Space								9										Space
Space								11										Space
Space								12										Space
								Total - A Phase	Total - B Phase	Total - C Phase								
								2.0 kVA	1.9 kVA	1.9 kVA								
								7 A	6 A	6 A								
								3.9 kVA	kVA =	16 AMP								
								4.9	kVA =	20 AMP								

**MINI POWER UNIT PANEL MPU2**

SYSTEM VOLTAGE: 120/240Vac, 1 PHASE, 3 WIRE  
 BRANCH POLES: 12 POLES  
 MOUNTING: MINI POWER UNIT  
 ENCLOSURE: NEMA 3R  
 BASIS OF DESIGN: SQUARE D MPU340F

PHASE BUS: 125 A  
 NEUTRAL BUS: 125 A  
 MAIN CIRCUIT BREAKER: 15 A  
 SCRR: 10 kA  
 IR: 10 kA

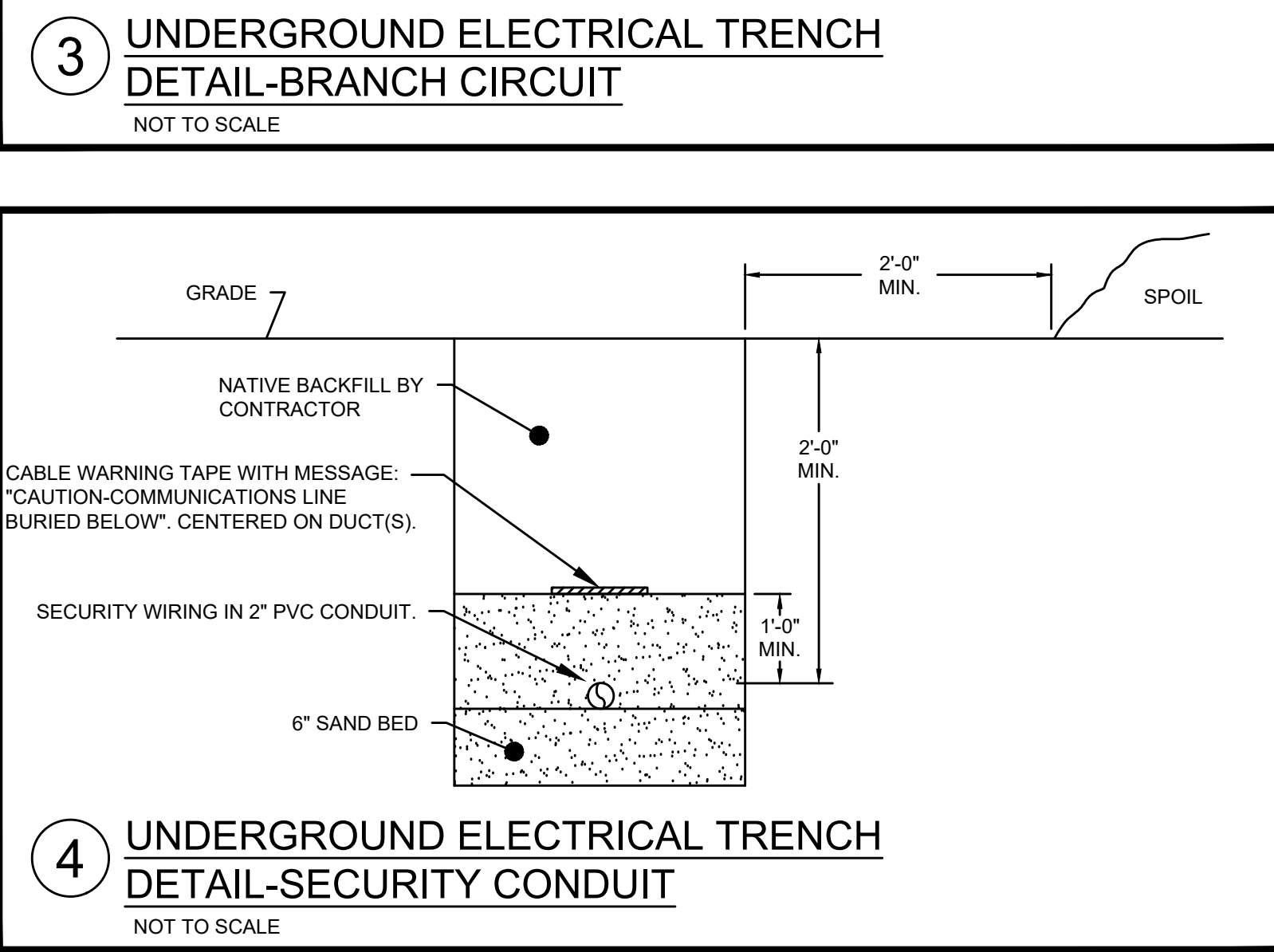
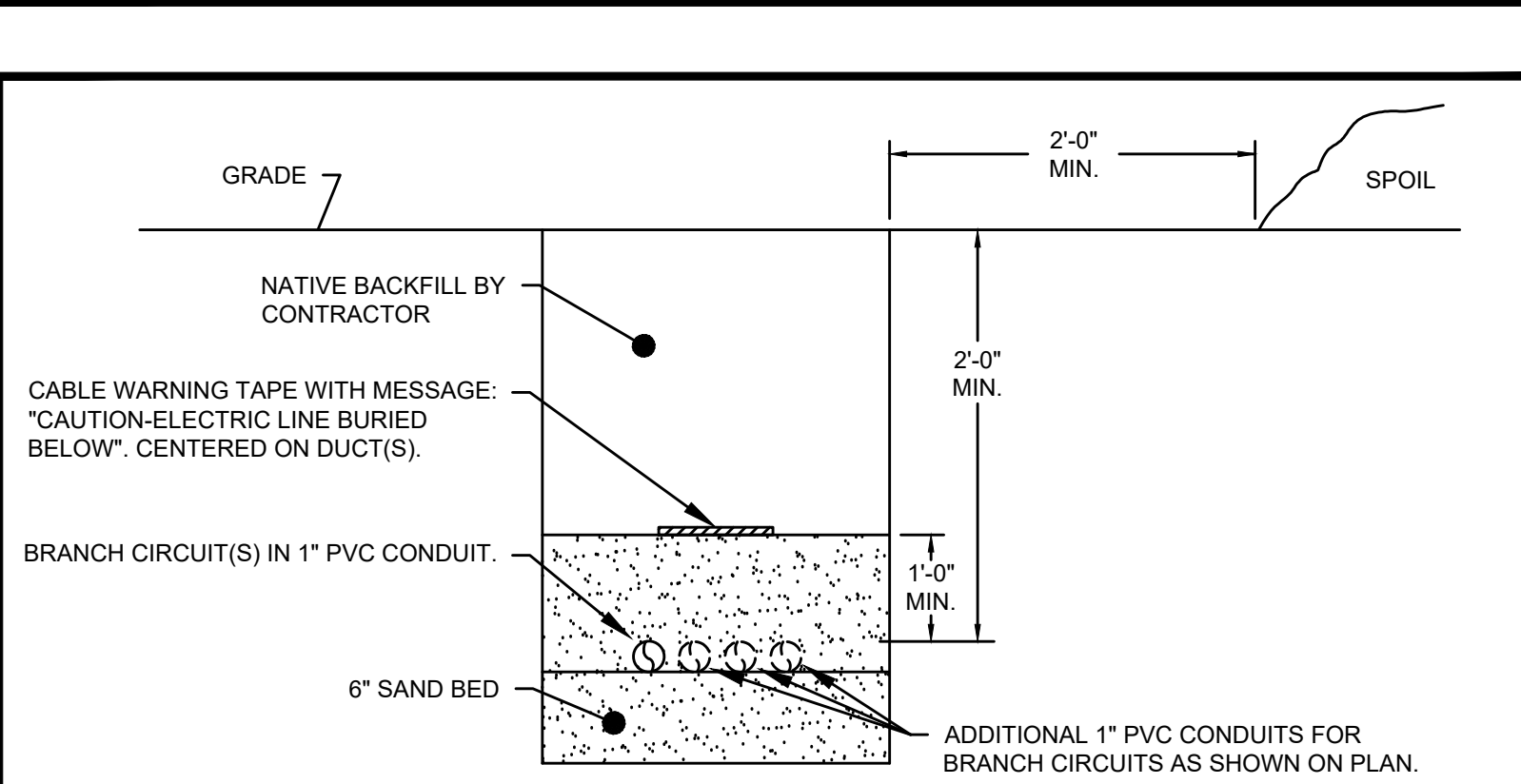
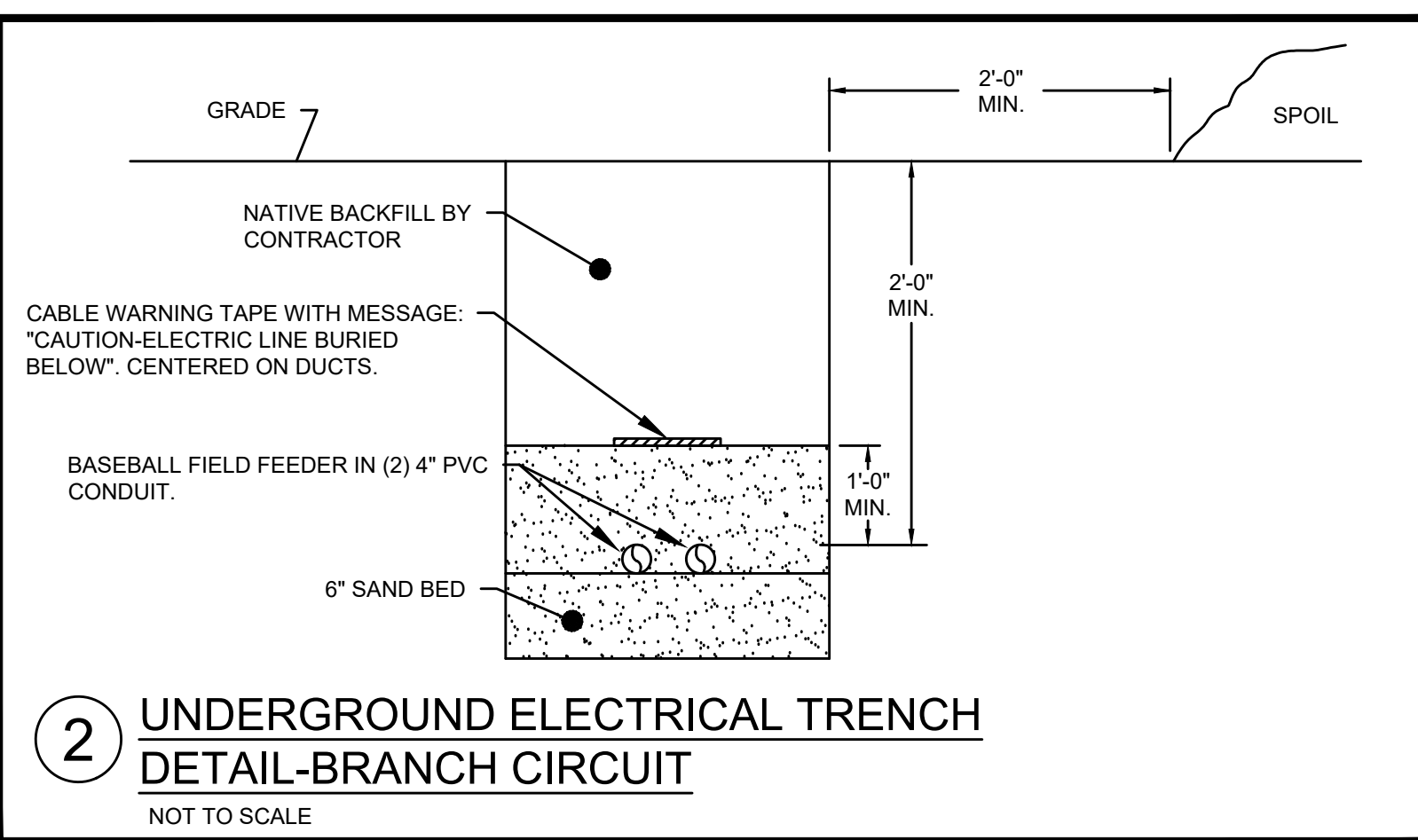
Description	Notes	Wire	Ground	Conduit	BRKR	Type	Pole	PH-A	PH-B	PH-C	Pole	Type	BRKR	Conduit	Ground	Wire	Notes	Description
Multi-Purpose Scoreboard		12	12	1/2"	15A	GF	3	864										Main Circuit Breaker
Rcpt-Scoreboard GFCI		12	12	1/2"	15A	GF	3		360									Space
Space								5										Space
Space								7										Space
Space								9										Space
Space								11										Space
Space								12										Space
								Total - A Phase	Total - B Phase	Total - C Phase								
								0.9 kVA	0.4 kVA	0.4 kVA								
								7 A	3 A	3 A								
								1.2 kVA	kVA =	5 AMP								
								1.5	kVA =	6 AMP								

**MINI POWER UNIT PANEL MPU3**

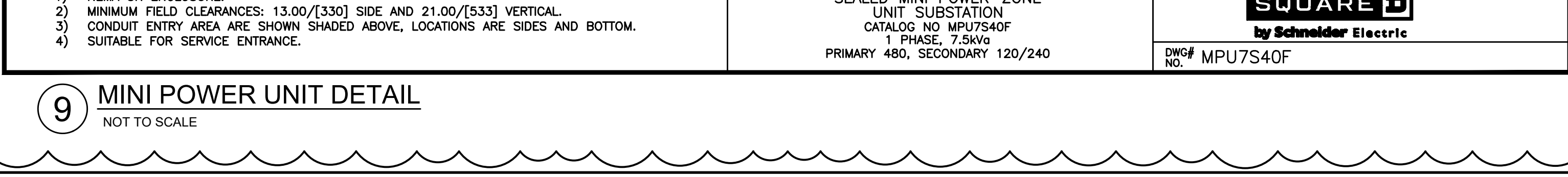
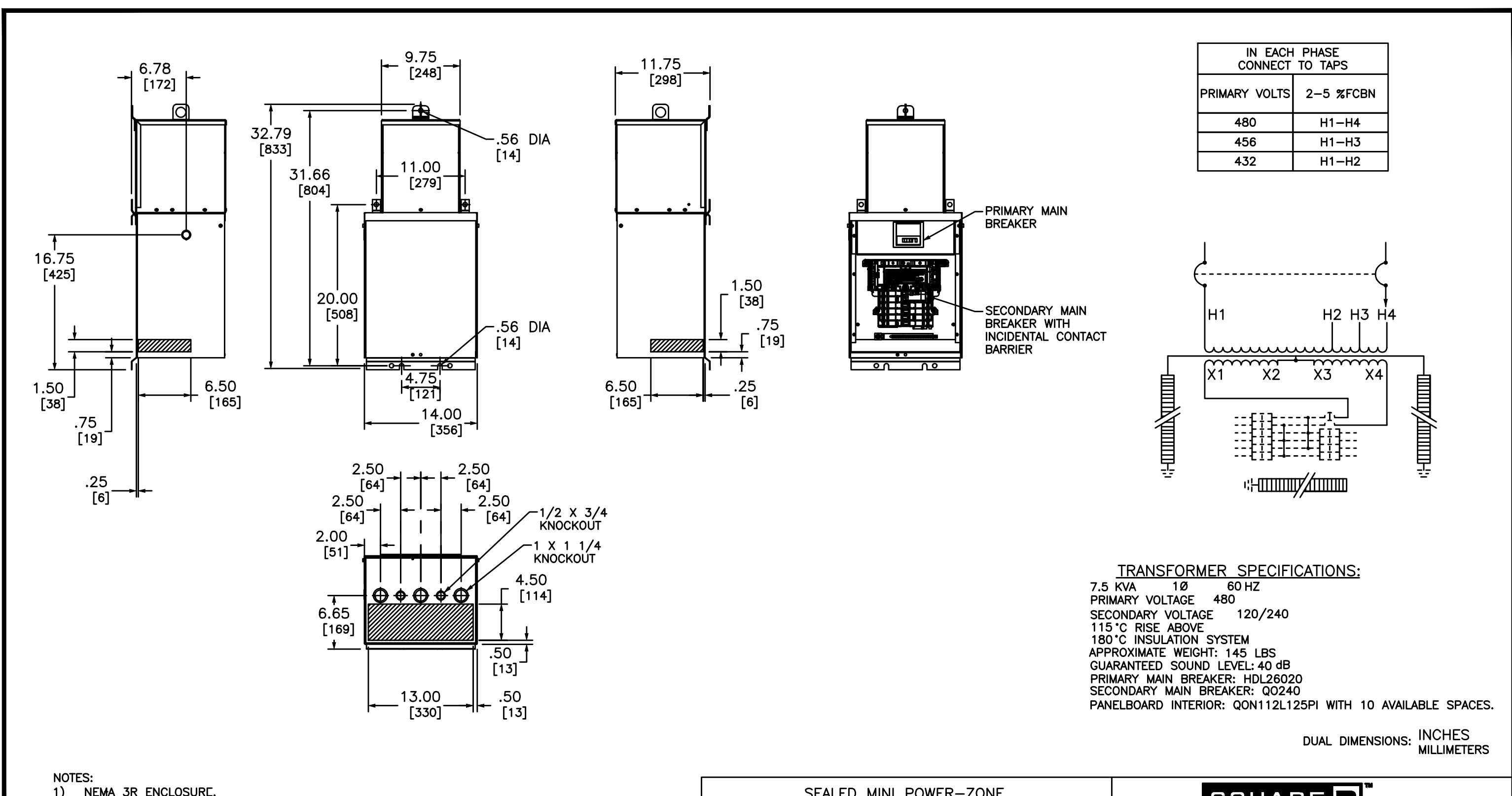
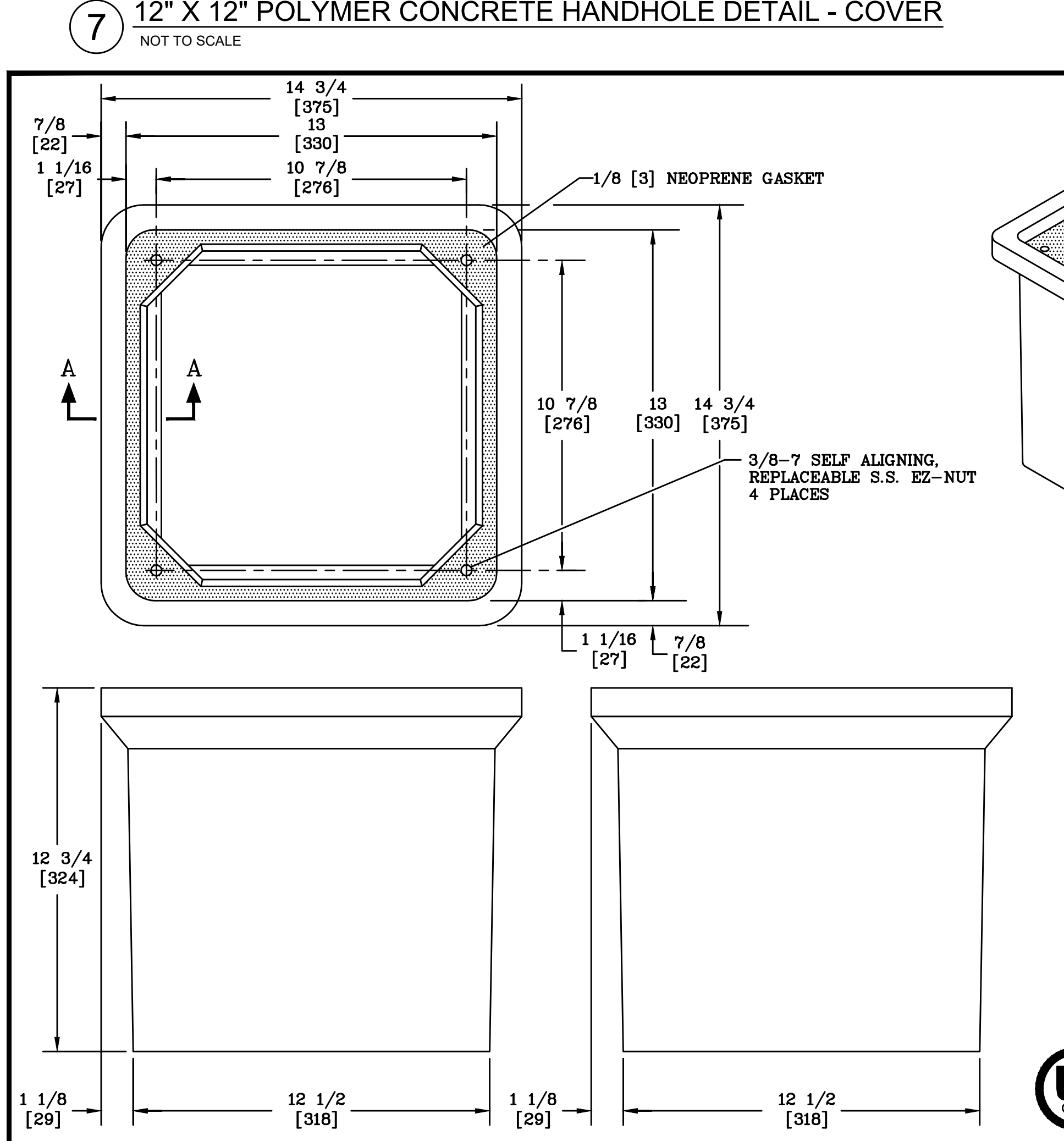
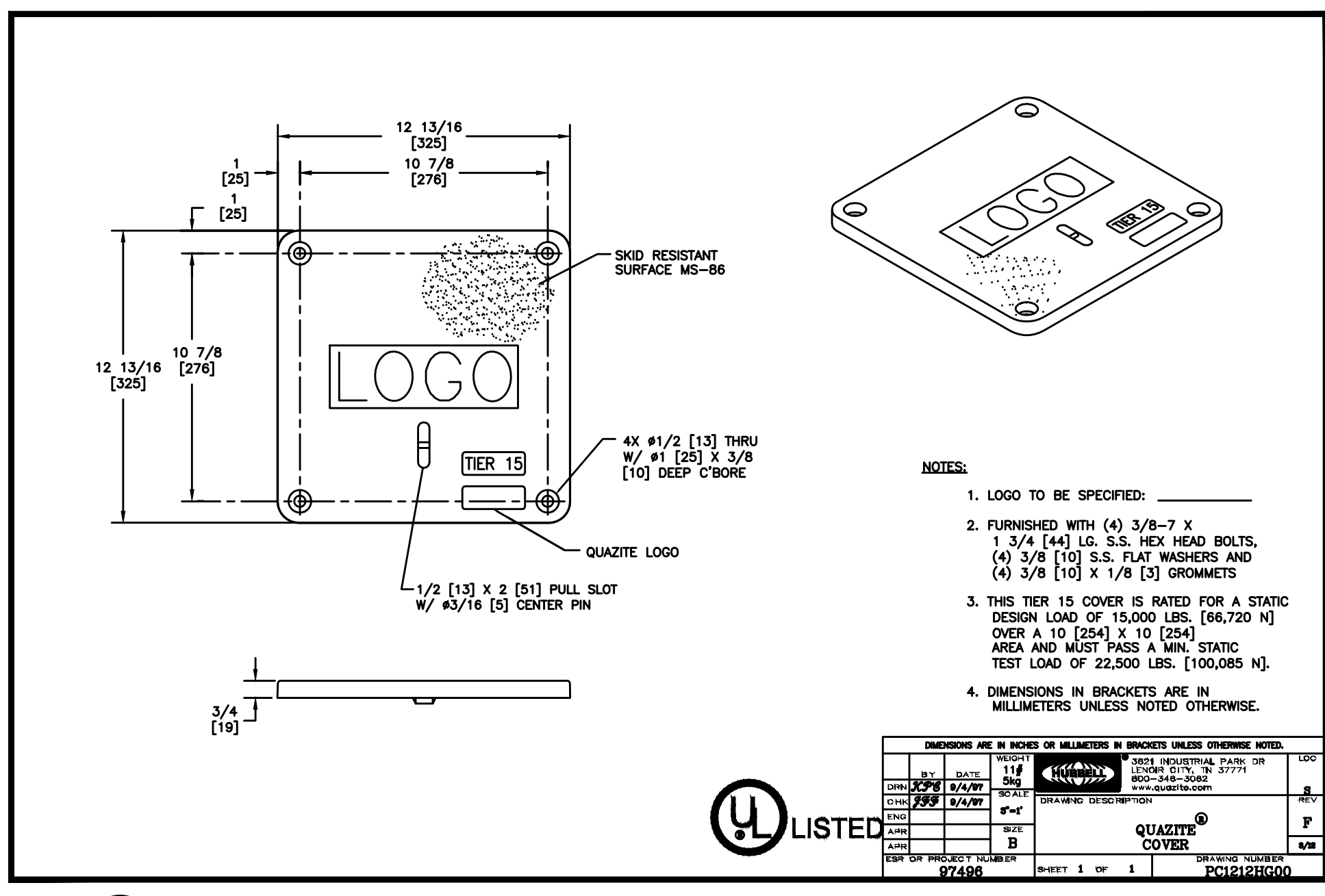
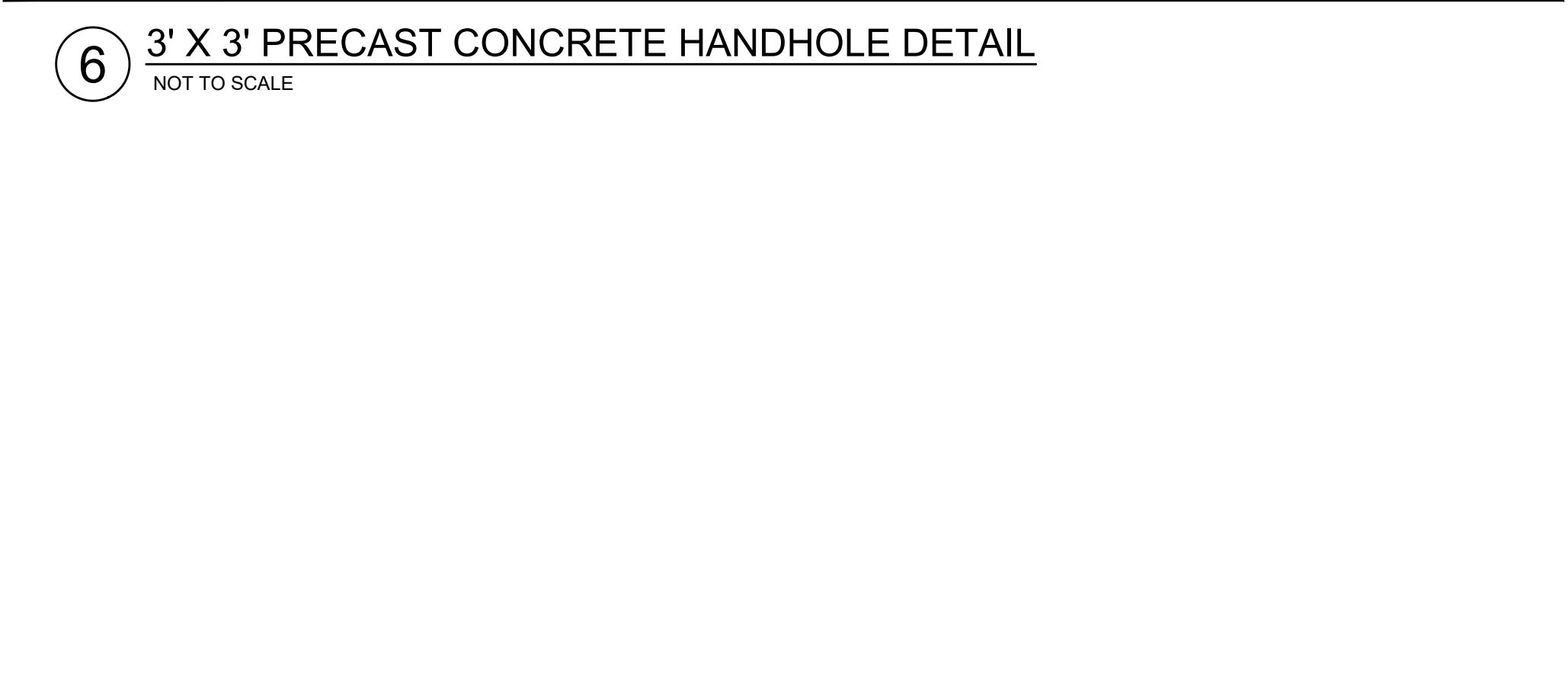
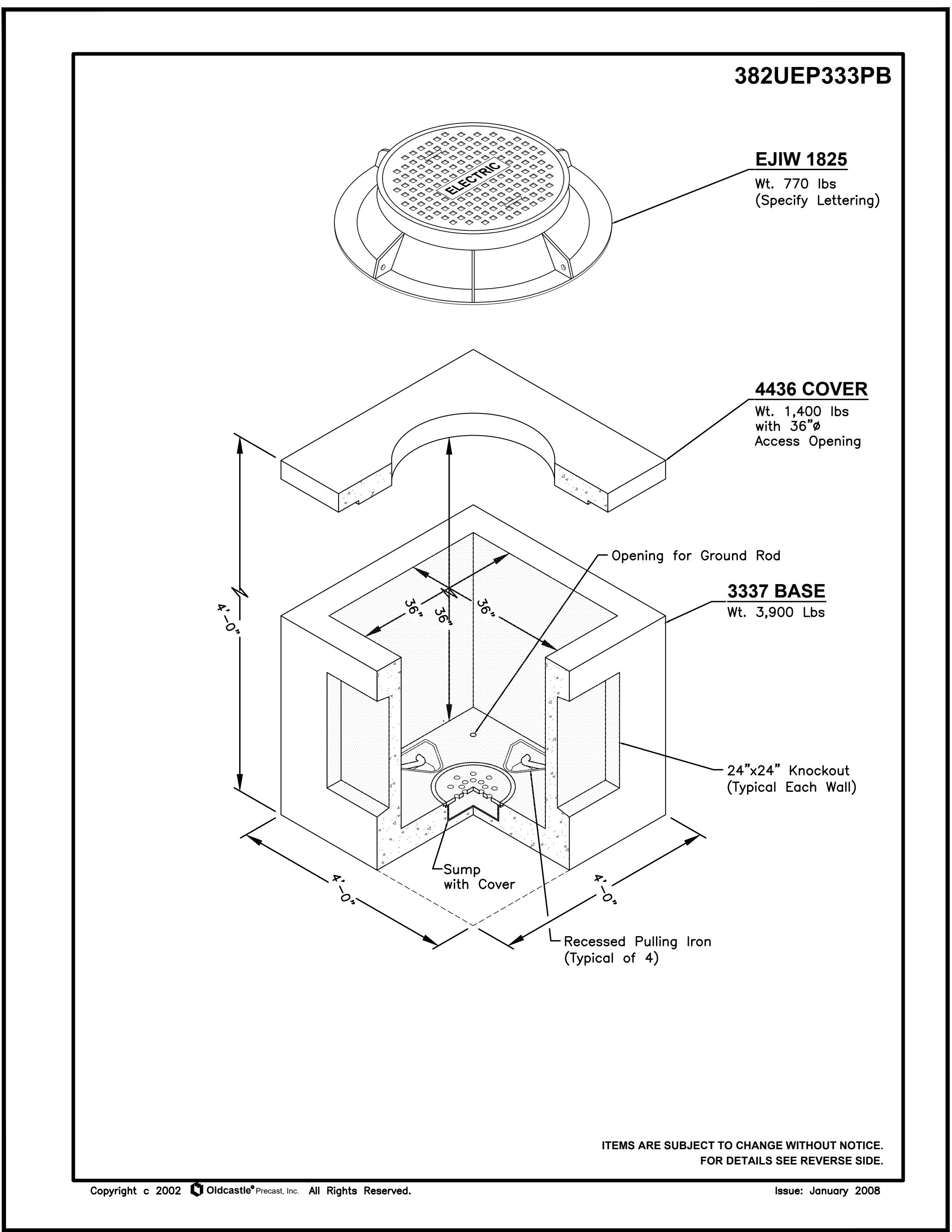
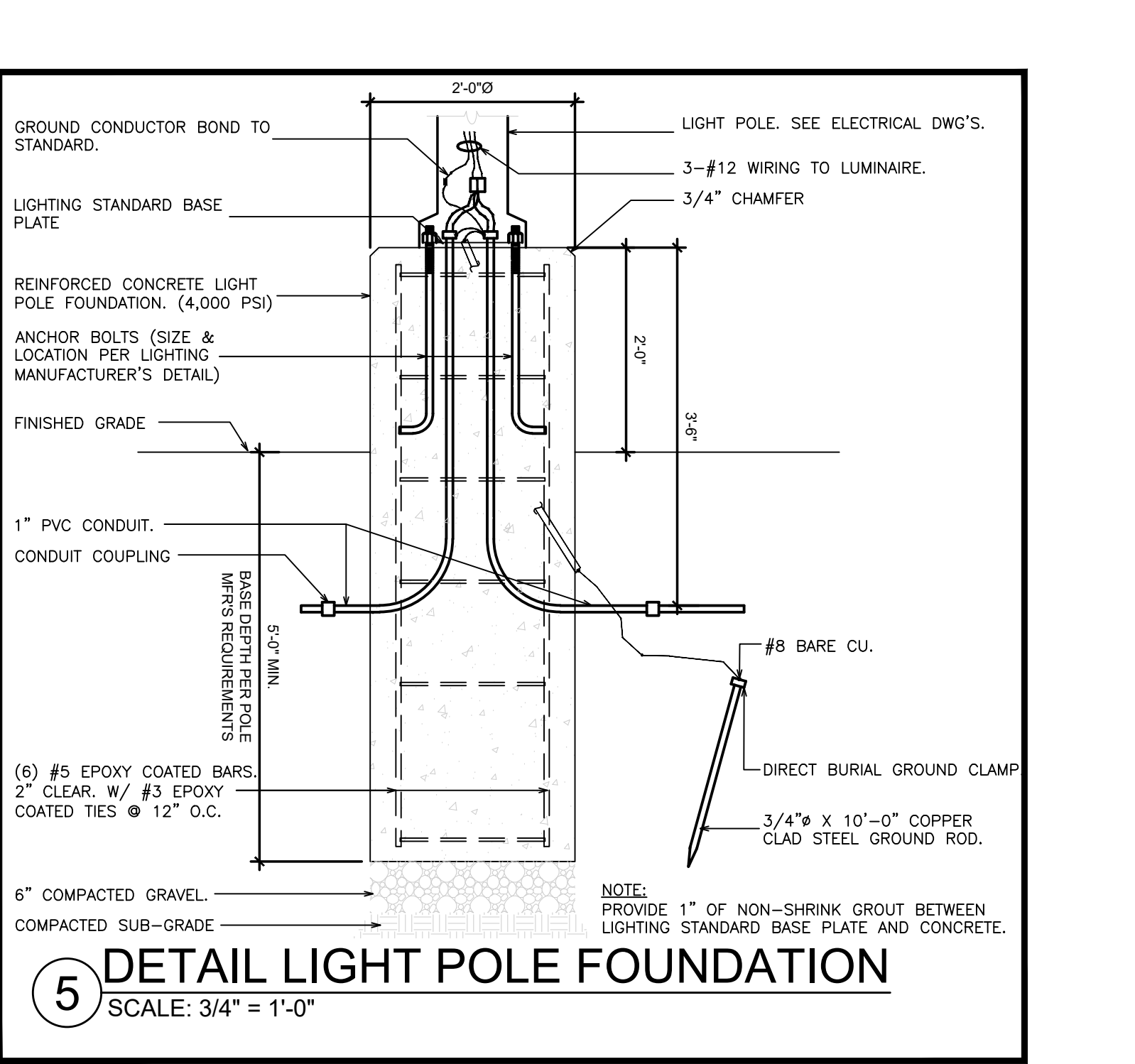
SYSTEM VOLTAGE: 120/240Vac, 1 PHASE, 3 WIRE  
 BRANCH POLES: 12 POLES  
 MOUNTING: MINI POWER UNIT  
 ENCLOSURE: NEMA 3R  
 BASIS OF DESIGN: SQUARE D MPU340F

PHASE BUS: 125 A  
 NEUTRAL BUS: 125 A  
 MAIN CIRCUIT BREAKER: 15 A  
 SCRR: 10 kA  
 IR: 10 kA

Description	Notes	Wire	Ground	Conduit	BRKR	Type	Pole	PH-A	PH-B	PH-C	Pole	Type	BRKR	Conduit	Ground	Wire	Notes	Description
Rcpt-Baseball Field Combox		12	12	1/2"	15A	GF	1	360										Main Circuit Breaker
Rcpt-Softball Field GFCI		12	12	1/2"	15A	GF	3		720									Space
Space								5										Space
Space								7										Space
Space								9										Space
Space								11										Space
Space								12										Space
								Total - A Phase	Total -									



- TRENCH DETAIL NOTES:**
- SAND SHALL PASS THROUGH A 3/8" MESH SCREEN AND SHALL NOT CONTAIN SHARP STONES. OTHER BACKFILL SHALL NOT CONTAIN ASHES, CINDERS, SHELL, FROZEN MATERIAL, LOOSE DEBRIS OR STONES LARGER THAN 2" IN DIAMETER. THE TRENCH SHALL BE BACKFILLED IMMEDIATELY FOLLOWING PLACEMENT OF THE CABLE.
  - PLASTIC WARNING TAPE SHALL BE "EXTRA-STRETCH" 6" WIDE AS MANUFACTURED BY TERRA-TAPE, DIVISION OF REEF INDUSTRIES OR APPROVED EQUAL. COLOR SHALL BE AS FOLLOWS: RED-ELECTRIC, ORANGE-COMMUNICATIONS. IMPRINTED TEXT SHALL IDENTIFY DUCT BANK SERVICE. UTILIZE NON-DETECTABLE TAPE FOR ELECTRIC DUCTS AND METALLIZED DETECTABLE TAPE FOR COMMUNICATIONS.
  - CONTRACTOR SHALL PROVIDE THERMOPLASTIC CONDUIT SPACERS RATED FOR DIRECT BURIAL. PROVIDE CARLON SNAP-N-STAC COMBO SPACERS OR APPROVED EQUAL.
  - PROVIDE PULL LINE IN ANY SPARE OR EMPTY CONDUIT. PROVIDE TAG AT EACH END TO LABEL THE LOCATION OF THE OTHER END OF THE CONDUIT.
  - UNDERGROUND DUCT (CONDUIT) SHALL BE:
    - UNDER NON-DRIVABLE SURFACES: PVC-40
    - UNDER DRIVABLE SURFACES: PVC-80
    - THROUGH BUILDING FOUNDATION OR WALL: EMCR-S



AS PER USA CONGRESS ARCHITECTURAL WORKS COPYRIGHT PROTECTION ACT OF 1990 ALL IDEAS AND DESIGNS INCLUDING DERIVATIVES THEREOF, ALL DRAWINGS AND SPECIFICATIONS CONSTITUTE THE ORIGINAL COPYRIGHT WORK BY FULLER AND D'ANGELO, P.C. (F&D). THE DRAWINGS AND SPECIFICATIONS AS INSTRUMENTS OF SERVICE BY F&D ARE CREATED BY F&D FOR THIS PROJECT ONLY AND REMAIN THE PRODUCT AND PROPERTY OF F&D. ANY REPRODUCTION WITHOUT THE PRIOR CONSENT OF F&D IS PROHIBITED.

ALTERATION OF THESE DOCUMENTS EXCEPT BY A VOUCHER OF NEW YORK STATE EDUCATION LAW.

**LFG**  
 253 East Avenue  
 Roseton, NY 10985  
 (845) 662-2373  
 (845) 662-9979 Fax

LANDMARK FACILITIES GROUP, INC.  
 488 SULLYWOOD ROAD  
 ELIZABETH, NEW JERSEY 07208  
 TEL: 973-889-4444  
 Copyright 2022. All Rights Reserved by FULLER & D'ANGELO, P.C.

**FULLER & D'ANGELO P.C.**  
 ARCHITECTS & PLANNERS

LICENSE EXP. DATE: 03-31-2026

S.E.D. CONTROL NUMBER:  
 RESOURCE BUILDING  
 66-04-06-03-01-0006

BUILDING E  
 66-04-06-03-01-005

EDGEMONT SCHOOL DISTRICT  
 HIGH SCHOOL RESOURCE & BUILDING E  
 RECONSTRUCTION  
 500 WHITE OAK LANE, SCARSDALE, NY 10583

3-31-2026	BID ADDENDUM 2
3-16-2026	BID
1-30-2026	SED ADDENDUM 1
11-24-2025	SED SUBMISSION
DATE	ISSUED TO
SHEET SIZE 30"x42"	DRAWING NO. <b>HS-F</b>
SCALE AS NOTED	<b>E200</b>
DRAWN BY LFG	FILE NO. <b>24529.06</b>











EDGEMONT SCHOOL DISTRICT  
HIGH SCHOOL RESOURCE & BUILDING E RENOVATIONS  
& ATHLETIC FIELD RECONSTRUCTION

RFI Form

CONTRACTOR'S REQUEST FOR INTERPRETATION NO. 1 F&D RFI NO: 003 (F&D USE)

1.1 NAME OF PROJECT: **High School Resource & Building E Renovations & Athletic Field Reconstruction**

1.2 NAME OF OWNER: **Edgemont Union Free School District**

FACILITY: **Edgemont High School**

1.3 DATE: 3/25/26

1.4 A/E PROJECT NO: **24529.06**

1.5 ARCHITECT: **Fuller and D'Angelo, P.C.**

**45 Knollwood Road, Elmsford, NY 10523**

**Tel: 914-592-4444; Fax: 914-592-1717**

**+WilliamM@fullerdangelo.com**

Refer to Section 00 2113 Par 1.13 for additional requirements.

FROM (CO. NAME): BLH CONSTRUCTION

CONTACT NAME: J.LIPPIETT Tel: 914 444 9702

Tel: \_\_\_\_\_ E-mail: johnnylippiett@blhconstructioninc.com

SUBJECT: \_\_\_\_\_

DISCIPLINE/TRADE: \_\_\_\_\_

DWG./SPEC. REFERENCE: \_\_\_\_\_

QUESTION: PLEASE SEE ATTACHED SHEET- Thank you

\_\_\_\_\_

\_\_\_\_\_

\_\_\_\_\_

\_\_\_ FIELD CONDITION \_\_\_\_\_

\_\_\_ DRAWING/SPEC \_\_\_\_\_

\_\_\_ DISCREPANCY \_\_\_\_\_

\_\_\_ OWNER CHANGE \_\_\_\_\_

\_\_\_ CLARIFICATION \_\_\_\_\_

\_\_\_ CONTRACTOR'S SUGGESTION (IF APPLICABLE): \_\_\_\_\_

FULLER AND D'ANGELO, P.C.  
ARCHITECTS AND PLANNERS

EDGEMONT SCHOOL DISTRICT  
HIGH SCHOOL RESOURCE & BUILDING E RENOVATIONS  
& ATHLETIC FIELD RECONSTRUCTION  
RFI Form

**ANSWER**


**See addendum #1.**

---

---

---

---

**ARCHITECT'S SIGNATURE:**  **DATE:** **3/31/2026**

Note: review and any responses to this request for information by the architect/engineer is strictly for design intent only and does not constitute acknowledgement or acceptance of any cost or schedule implications unless specifically presented by the contractor. By submission of this request for information, the contractor assumes all responsibility in the absence of an approved change order or work directive.

Please kindly clarify the sequence of work and duration outlined in the project milestone.

Could you please specify:

- Phase 2: What work will the GC be performing from June 29th through August 23rd 2026?
- Phase 3: What GC work is planned from September 1st 2026 through June 25th 2027?
- Phase 4: What GC work is scheduled for June 28th 2027 through August 22nd 2027?

Will the space will be occupied between September 1st 2026 and June 25th 2027, and will the work needs to be completed in phases?

Are we to work on the entire floor at the same time – or are the rooms phased?