

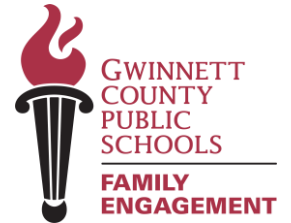
Cedar Hill ES

25.26 TITLE I PLANNING MEETING

March 19, 2026

8:30 AM

Family Engagement Center



Welcome

Introductions

Purpose of meeting

This meeting is about shared decision-making all families and community members share in the decision-making process. Your voice matters in shaping how Title I funds support student success. We need your input!

Bienvenida

Introduccion

Proposito de la reunion

Esta reunión trata sobre la toma de decisiones compartida. Todas las familias y los miembros de la comunidad participan en el proceso de toma de decisiones. Su voz es importante para definir cómo los fondos del Título I apoyan el éxito de los estudiantes. ¡Necesitamos sus aportaciones!

Parents, family members, members of the community, and school staff join the Title I Planning meeting once a year in the Spring to review and provide input and jointly develop the following documents:

Los padres, los familiares, los miembros de la comunidad y el personal escolar asisten a la reunión de planificación del Título I una vez al año, en primavera, para revisar, aportar sugerencias y elaborar conjuntamente los siguientes documentos:

At your school	At the GCPS district level
Local School Plan for Improvement (LSPI)	District Improvement Plan (DIP)
The Plan...Promise...	District Family and Community Engagement Plan
Title I Budget	District Title I Budget

En su escuela	A nivel del distrito GCPS
Plan Local de Mejora Local (LSPI)	Plan de Mejora (DIP)
El Plan...La Promesa...	Plan de participacion familiar y de la comunidad
Presupuesto de Titulo I	Presupuesto de Titulo I del Distrito

Title I Overview

- Is the largest federal assistance program for schools.
- Provides support to students who are at risk of not meeting the State's academic standards.
- Determines funding by the number of students receiving free or reduced-price lunch.
- Supports parents/families by offering activities and training opportunities to increase engagement in their children's education.

Resumen de Título I

- Es el programa federal de asistencia más grande para las escuelas.
- Brinda apoyo a los estudiantes que corren el riesgo de no cumplir con los estándares académicos del Estado.
- Determina la financiación en función del número de estudiantes que reciben almuerzo gratuito o a precio reducido.
- Apoya a los padres y familias ofreciendo actividades y oportunidades de capacitación para aumentar su participación en la educación de sus hijos.

Local School Input Form

Formulario de aportaciones de la escuela local

Throughout today's meeting, you'll have multiple opportunities to provide input on various aspects of our school's Title I program. We've created an input form to capture your thoughts, suggestions, and questions.

A lo largo de la reunión de hoy, tendrán múltiples oportunidades para aportar sus opiniones sobre diversos aspectos del programa Título I de nuestra escuela. Hemos creado un formulario de aportaciones para recopilar sus ideas, sugerencias y preguntas.

Please ask if you need assistance completing the form.



FEDERAL PROGRAMS - OFFICE OF FAMILY ENGAGEMENT

LOCAL SCHOOL PLANNING MEETING INPUT FORM 2026 - 2027

School Name: _____ Date: _____

Please return completed form to: _____

TITLE I COMPONENT	Do YOU HAVE SUGGESTIONS FOR CHANGES?		SUGGESTIONS <small>(IF YOU CHECKED YES, PLEASE WRITE YOUR SUGGESTIONS FOR CHANGE IN THIS COLUMN)</small>
	Yes	No	
1. School Goals			
2. The Plan...The Promise...			
3. Budget and Prioritized Wish List			

4. *What do you think staff members need to know to better assist you in supporting our child's learning?* _____



DATA AND SCHOOL GOALS

Datos y metas de la escuela

Understanding where we are helps us determine where we need to go.

Let's examine our school's performance data together and identify opportunities for growth and celebration.

Comprender dónde nos encontramos nos ayuda a determinar hacia dónde debemos dirigirnos. Examinemos juntos los datos de desempeño de nuestra escuela e identifiquemos oportunidades de crecimiento y motivos de celebración.

School Profile Dashboard Data

Datos del panel del perfil escolar



GCPS School Profile Dashboard SY 2024-25

Gwinnett County Public Schools
School Profile Dashboard
 Superintendent: Dr. Calvin J. Watts
 School Year 2023-24

Gwinnett County Public Schools has created this school Profile Dashboard to provide our parents and community members with meaningful information about our schools.

- Select a language from the dropdown box below.
- Select or search for a school from the dropdown box below.
- Click the SUBMIT button to view the dashboard for the selected school.

Information on each school is organized as follows:

- Summary
- Students
- Family
- Student Performance
- Staff
- Resources

Click the button below to view the user guide. Click the button below to view the instructional video. Click the button below to leave feedback.

English
 Archer HS

This dashboard is updated yearly in January and July, representing data collected for the 2023-24 School Year.

Archer High School
 Principal: Dr. Conquisha D. Thompson (Since 2022)
 School Year 2023-24

Click to change school or language

Summary | Students | Student Performance | Staff | Family | Resources

Student Demographics

How many students do we serve?

SCHOOL	GCPS HS	GCPS
3,063	59,368	182,214

What is the racial and ethnic background of our students?

SCHOOL	GCPS HS	GCPS
54.6%	19.9%	16.7%
12.0%	33.5%	34.2%
11.9%	32.1%	35.4%
16.7%	16.3%	15.9%

What percent of students receive support services?

SCHOOL	GCPS HS	GCPS
54.0%	60.3%	65.0%
6.9%	16.3%	25.9%

Special Education

SCHOOL	GCPS HS	GCPS
13.3%	12.7%	13.7%

Gifted Education

SCHOOL	GCPS HS	GCPS
18.8%	20.1%	16.2%

Staff Demographics

What is the demographic composition of our staff?

Certified Staff by Gender

SCHOOL	Female	Male
Archer HS	63.5%	36.5%
GCPS HS	60.6%	39.4%
GCPS	79.6%	20.4%

Certified Staff by Race/Ethnicity

SCHOOL	Amer Ind	Asian	Black	Hispanic	White
Archer HS	26.0%	5.5%	66.9%		
GCPS HS	4.9%	26.8%	7.5%	60.2%	
GCPS	5.1%	31.5%	7.4%	56.1%	

This dashboard is updated yearly in January and July, representing data collected for the 2023-24 School Year.

What does the data tell us?

“Say Something” Protocol

Review the data and use the “Say Something” sentence starters outlined below to share statements regarding the data. What parts of the data catch your attention?

Something I noticed...

Something I wonder about...

Something that puzzles me ...

Something I’m reminded of when I review the data ...

Something I would like to talk more about ...

¿Qué nos dicen los datos?

Protocolo «Di algo»

Revise los datos y utilice los iniciadores de frases de la sección «Diga algo» que se describen a continuación para compartir afirmaciones sobre dichos datos. ¿Qué aspectos de los datos captan su atención?

Algo que noté...

Algo sobre lo que me pregunto...

Algo que me desconcierta...

Algo que me viene a la mente al revisar los datos...

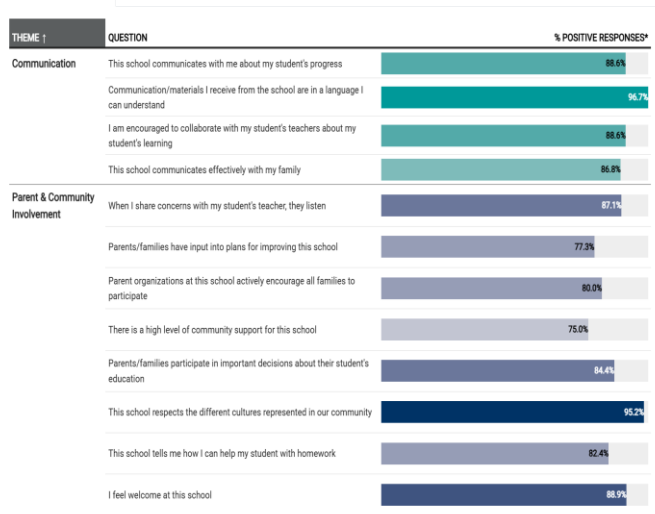
Algo de lo que me gustaría hablar con más detalle...

Educational Effectiveness Survey (EES) – Family Perceptions Results Data

2024-25 Family Perceptions
Educational Effectiveness Survey™ - FAMILY
Cedar Hill ES



Survey Item Summary **Family Engagement Workshop Input** [Response Count by Language](#)



Data Sources: GCPS Administrative Data; Center for Educational Effectiveness: Educational Effectiveness Survey™ - FAMILY
Note: % Positive Responses represents the percentage of respondents indicating that they either 'Strongly Agree' or 'Agree'.

Each year, families complete the Educational Effectiveness Survey (EES) to share their perceptions about school climate, communication, student support, and educational quality. Your honest feedback helps us understand what's working well and where we can improve.



Cada año, las familias completan la Encuesta de Eficacia Educativa (EES) para compartir sus percepciones sobre el clima escolar, la comunicación, el apoyo a los estudiantes y la calidad educativa. Sus comentarios honestos nos ayudan a comprender qué funciona bien y dónde podemos mejorar.

Educational Effectiveness Survey (EES) Results Data

Datos de resultados de la Encuesta de Eficacia Educativa (EES)

Turn and Talk:

- *What do you notice?*
- What were the results of the 2024-25 year's survey?
- How can we use this information?

Giren y conversen:

- *¿Qué observan?*
- *¿Cuáles fueron los resultados de la encuesta del año 2024-25?*
- *¿Cómo podemos utilizar esta información?*



Local School Plan for Improvement

Plan de mejora escolar local

- + Each school is responsible for the development of a local school plan for improvement (LSPI). *Cada escuela es responsable de la elaboración de un plan escolar local de mejora (LSPI).*
- + The Local School Plan for Improvement is aligned to the district's strategic plan. *El Plan Local de Mejora Escolar está alineado con el plan estratégico del distrito.*
- + Schools continually review their data sets to determine areas needing improvement and write long-term goals that are focused on the identified areas. *Las escuelas revisan continuamente sus conjuntos de datos para determinar las áreas que requieren mejoras y establecen objetivos a largo plazo centrados en las áreas identificadas.*
- + For each goal, a school identifies specific, measurable, annual objectives and then determine how to best achieve these. *Para cada meta, una escuela identifica objetivos específicos, medibles y anuales, y luego determina la mejor manera de alcanzarlos.*
- + The LSPI development process involves teachers, parents, and community members, so the entire school community has the opportunity to be involved in conversations about school improvement. *El proceso de desarrollo del LSPI involucra a docentes, padres y miembros de la comunidad, por lo que toda la comunidad escolar tiene la oportunidad de participar en las conversaciones sobre la mejora escolar.*

Local School Plan for Improvement (LSPI)- What are our School's Goals and How do we plan to accomplish our goals?

Goal #1:

Empathy 1.A - Cultural Competence

Action Step 1:

Provide professional development for staff on cultural competence, diversity, and inclusion.

Action Step 2:

Provide scaffolded SEL lessons for grades K-5 using the "Character Strong" Program to help our students reach their full potential and thrive with evidenced based social emotional learning (SEL) lessons.

Plan Local de Mejora Escolar (LSPI) — ¿Cuáles son los objetivos de nuestra escuela? y ¿Cómo planeamos alcanzar nuestros objetivos?

Meta #1:

Empatia 1.A - Competencia Cultural

Paso de accion 1:

Proporcionar desarrollo profesional al personal en materia de competencia cultural, diversidad e inclusión.

Paso de accion 2:

Proporcionar lecciones de aprendizaje socioemocional (SEL) con andamiaje para los grados K-5, utilizando el programa "Character Strong", con el fin de ayudar a nuestros estudiantes a alcanzar su máximo potencial y prosperar mediante lecciones de SEL basadas en evidencia.

Local School Plan for Improvement (LSPI)- What are our School's Goals and How do we plan to accomplish our goals?

Goal #2:

Empathy 1.B - Staff and Student Well Being

Action Step 1:

Work collaboratively with the Office of Behavior Support and Interventions.

Action Step 2:

Encourage and support initiatives and projects proposed and led by students.

Plan Local de Mejora Escolar (LSPI) — ¿Cuáles son los objetivos de nuestra escuela? y ¿Cómo planeamos alcanzar nuestros objetivos?

Meta #2:

Empatia 1.B - Bienestar del personal y de los estudiantes

Paso de accion 1:

Trabajar en colaboración con la Oficina de Apoyo Conductual e Intervenciones.

Paso de accion 2:

Fomentar y apoyar las iniciativas y proyectos propuestos y liderados por los estudiantes.

Local School Plan for Improvement (LSPI)- What are our School's Goals and How do we plan to accomplish our goals?

Goal #3:

Equity 2.A - Multitiered Systems of Support

Action Step 1:

Establish regular data review meetings to identify trends and needs for improvement.

Action Step 2:

Continue the MTSS monthly meetings to discuss students with Tier 2 and Tier 3 educational needs.

Plan Local de Mejora Escolar (LSPI) — ¿Cuáles son los objetivos de nuestra escuela? y ¿Cómo planeamos alcanzar nuestros objetivos?

Meta #3:

Equidad 2.A - Sistemas de apoyo de niveles múltiples

Plan de accion 1:

Establezca reuniones periódicas de revisión de datos para identificar tendencias y necesidades de mejora.

Plan de accion 2:

Continuar con las reuniones mensuales del MTSS para analizar a los estudiantes con necesidades educativas de Nivel 2 y Nivel 3.

Local School Plan for Improvement (LSPI)- What are our School's Goals and How do we plan to accomplish our goals?

Goal #4:

Equity 2.B - Opportunity and Access

Action Step 1:

Continue to offer advanced content reading and math classes to identified students in grades 2-5.

Action Step 2:

Expand extracurricular offerings and make them accessible to all students e.g. Readers Rally/Robotics/Peer Leaders.

Plan Local de Mejora Escolar (LSPI) — ¿Cuáles son los objetivos de nuestra escuela? y ¿Cómo planeamos alcanzar nuestros objetivos?

Meta #4:

Equidad 2.B - Oportunidad y acceso

Plan de accion 1:

Continuar ofreciendo clases de contenido avanzado en lectura y matemáticas a los estudiantes identificados de los grados 2 al 5.

Plan de accion 2:

Ampliar la oferta de actividades extracurriculares y hacerla accesible a todos los estudiantes (por ejemplo: Readers Rally, robótica, líderes estudiantiles).

Local School Plan for Improvement (LSPI)- What are our School's Goals and How do we plan to accomplish our goals?

Goal #5:

Effectiveness 3.A - Results-Based Evaluation System

Action Step 1:

Regularly collect and analyze evaluation data to identify areas for improvement and professional development needs.

Action Step 2:

Conduct regular classroom walk throughs led by administrators to observe and provide constructive feedback to teachers.

Plan Local de Mejora Escolar (LSPI) — ¿Cuáles son los objetivos de nuestra escuela? y ¿Cómo planeamos alcanzar nuestros objetivos?

Meta #5:

Eficacia 3.A - Resultados basados en los sistemas de evaluación

Plan de acción 1:

Recopile y analice regularmente datos de evaluación para identificar áreas de mejora y necesidades de desarrollo profesional.

Plan de acción 2:

Realizar recorridos regulares por las aulas, dirigidos por los administradores, para observar y brindar retroalimentación constructiva a los docentes.

Local School Plan for Improvement (LSPI)- What are our School's Goals and How do we plan to accomplish our goals?

Goal #6:

Excellence 4.B - Postsecondary and Workforce
Readiness

Action Step 1:

Collaborate with the school counseling department to organize career days or events where professionals from diverse fields visit the school to share insights about their careers.

Action Step 2:

Encourage students to embrace challenges and view mistakes as opportunities for personal growth.

Plan Local de Mejora Escolar (LSPI) — ¿Cuáles son los objetivos de nuestra escuela? y ¿Cómo planeamos alcanzar nuestros objetivos?

Meta #6:

Excelencia 4.B - Preparación para la educación
postsecundaria y la fuerza laboral

Plan de acción 1:

Colabora con el departamento de orientación escolar para organizar jornadas de orientación profesional o eventos en los que profesionales de diversos campos visiten la escuela para compartir perspectivas sobre sus carreras.

Plan de acción 2:

Anime a los estudiantes a aceptar los desafíos y a ver los errores como oportunidades de crecimiento personal.

Local School Plan for Improvement (LSPI)- What are our School's Goals and How do we plan to accomplish our goals?

Goal #7:

Family Engagement/Building Parent Capacity

Action Step 1:

Create a welcoming and inclusive school environment that encourages parents to actively participate in school activities and decision making.

Action Step 2:

Offer workshops and training sessions on literacy development, math support, and strategies for reinforcing classroom learning at home.

Literacy Night, STEM Night, Attendance Workshop,
ELT Workshop, and GMAS Workshop

Plan Local de Mejora Escolar (LSPI) — ¿Cuáles son los objetivos de nuestra escuela? y ¿Cómo planeamos alcanzar nuestros objetivos?

Meta #7:

Participación familiar / Fortalecimiento de las capacidades de los padres

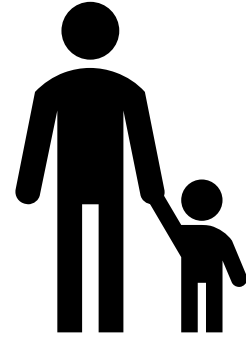
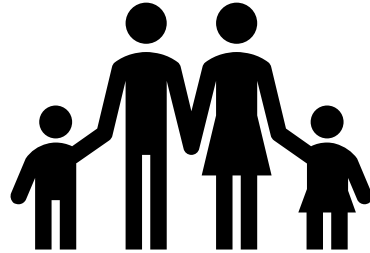
Plan de acción 1:

Cree un entorno escolar acogedor e inclusivo que fomente la participación activa de los padres en las actividades escolares y en la toma de decisiones.

Plan de acción 2:

Ofrezca talleres y sesiones de capacitación sobre el desarrollo de la lectoescritura, apoyo en matemáticas y estrategias para reforzar el aprendizaje en el aula desde casa.

Family and Community Engagement Documents



Family and Community Engagement Documents

Strong partnerships between school and home create the foundation for student success. Let's review the key documents that guide our family engagement efforts.


Las sólidas alianzas entre la escuela y el hogar sientan las bases para el éxito de los estudiantes. Revisemos los documentos clave que guían nuestros esfuerzos de participación familiar.

Title I School-Family Plan...The Promise... Titulo I Escuela-Familia El plan...La Promesa...

CEDAR HILL ELEMENTARY

**THE PLAN...
THE PROMISE...**

2026-2027



3615 SURGARLOAF
PARKWAY LAWRENCEVILLE,
GA. 30044 770-962-5015

<https://www.gcpsk12.org/cedarhills>

March 29, 2026

WHAT IS A FAMILY AND COMMUNITY ENGAGEMENT PLAN?

It is a plan that describes how our school will provide opportunities to improve family engagement that will support student learning at school and at home. All students and their families are invited and encouraged to fully participate in the opportunities described in this plan. The school will provide information and as many opportunities as possible for the participation of all family members.

WHAT IS A SCHOOL-FAMILY PROMISE?

It is a written agreement that outlines how the school, the students, and the family will work together to ensure your child's academic success. An effective School-Family Promise contains the following elements:

- Clear learning goals that are linked to the school's improvement plan.
- Specific skills students will learn during the year.
- Strategies that staff, families, and students will use to improve student learning.
- Ways to extend learning at home.
- Methods teachers and family members will use to communicate about student progress.
- Opportunities for family members to observe and participate in the classroom.
- Jointly-developed by families, school staff, students, community business partners, and other stakeholders during our Planning Meeting.
- The School-Family Promise will be reviewed at the Annual Meeting, parent teacher conferences and other Title I parent meetings throughout the school year.

LET'S TALK

- News letters
- School website
- Parent Square
- Friday Folders
- Phone calls and emails

If you need interpretation and/or translation services, please contact: [Dayanara Torres-Ramos](mailto:Dayanara.Torres-Ramos@gcpsk12.org) or 678-377-8997

Dayanara.Torres-Ramos@gcpsk12.org or 678-377-8997

ACTIVITIES TO BUILD OUR PARTNERSHIP


FALL SEMESTER

- Title I Annual Meeting
- Curriculum Night
- STEAM Night
- Literacy Night
- Mother Son Event
- International Night

SPRING

- Mother Son Event
- Father Daughter Dance
- Kindergarten Transition Meeting
- CAMAS Testing Parent Meeting

Parent Teacher Conferences
October: 28-29, 2026
March: 3-4, 2026

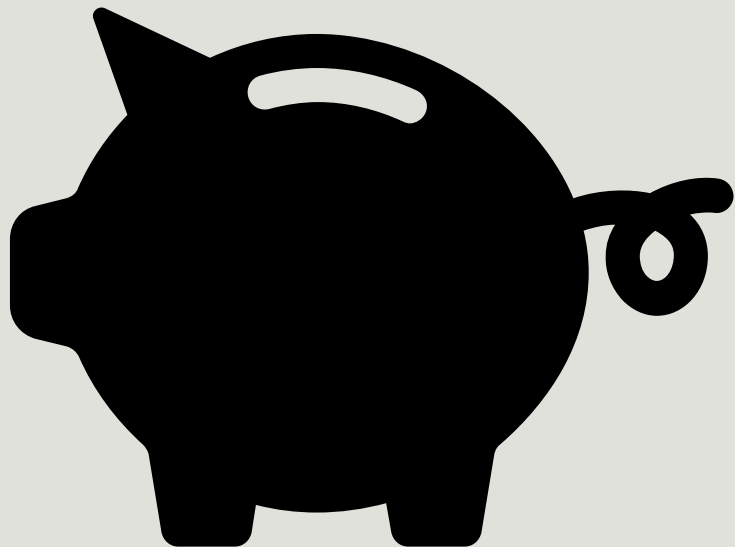




Review The School-Family Plan...The Promise... document with families and gather written input for revisions.



Please add your comments/suggestions to the Local School Planning Meeting Input Form under the section labeled **The Plan...
The Promise.**



Budget & Resources

Presupuesto y Recursos

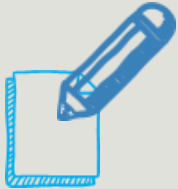
Understanding how Title I funds are allocated helps ensure resources align with our school's greatest needs. Let's explore our budget and prioritized wish list together.

Comprender cómo se asignan los fondos del Título I ayuda a garantizar que los recursos se alineen con las mayores necesidades de nuestra escuela. Exploremos juntos nuestro presupuesto y nuestra lista de prioridades.

Our School's Title I Budget and Prioritized Wish List



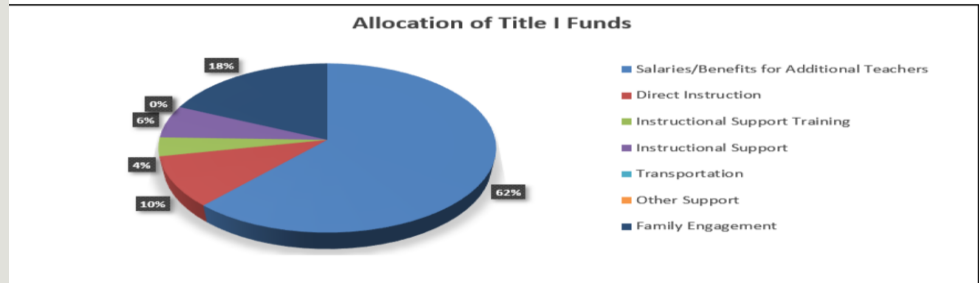
Presupuesto del Título I de nuestra escuela y lista de deseos priorizada

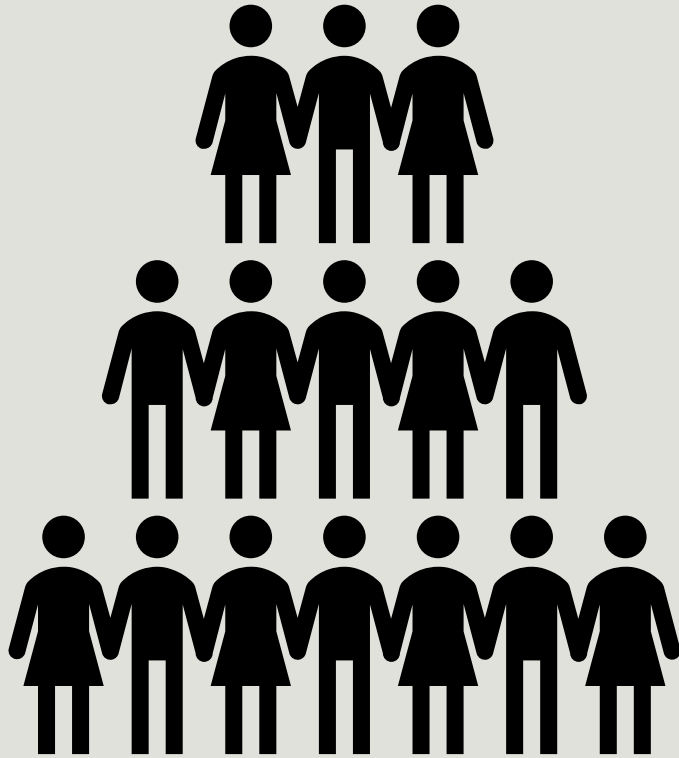


Families, please add your comments/suggestions to the Local School Planning Meeting Input Form under the section labeled **Budget and Prioritized Wish List**

Budget Category	Amount	Percent of Budget	Use of Funds
Salaries/Benefits for Additional Teachers	\$308,556	62.02%	Teachers salaries
Direct Instruction	\$49,106	9.87%	Instructional supplies, printing, web subscriptions, classroom libraries, technology for collaborative learning space
Instructional Support Training	\$17,889	3.60%	Release days for collaborative planning for teachers
Instructional Support	\$30,802	6.19%	Professional development and collaborative planning for teachers
Transportation	\$0	0.00%	
Other Support	\$0	0.00%	
Family Engagement	\$91,136	18.32%	Parent Instructional Coordinator salary, cameras, scanner
TOTAL ALLOCATION	\$497,489	100%	

Title I Wish List	
Item	Cost
Instructional Materials for EL Education	\$15,000
Printing for EL Education	\$2,000
Decodable Books for Classrooms	\$20,000
Professional Learning for teachers (EL/Gifted Endorsement)	\$15,000
Extended Learning Program	\$20,000
Collaborative Planning for teachers	\$30,000
TOTAL:	\$102,000





Staff Training Capacitación al Personal

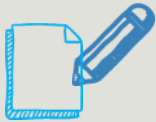
Investing in our staff's professional growth ensures they have the skills, knowledge, and strategies to support every student's success and partner effectively with families.

Invertir en el crecimiento profesional de nuestro personal garantiza que cuenten con las habilidades, los conocimientos y las estrategias necesarios para apoyar el éxito de cada estudiante y colaborar eficazmente con las familias.

Building School Staff Capacity

We Need Your Input!

Families, what do you think staff members need to know to better assist you in supporting your child's learning?



Families, please add your comments/suggestions to the Local School Planning Meeting Input Form

Fortalecimiento de las capacidades del personal escolar

¡Necesitamos su opinión!

Familias, ¿qué creen que el personal necesita saber para asistirlos mejor en el apoyo al aprendizaje de sus hijos?



GCPS District Input

Your voice extends beyond our school walls. Let's explore opportunities to influence district-level Title I planning and family engagement initiatives.

Tu voz trasciende los muros de nuestra escuela. Exploremos oportunidades para influir en la planificación del Título I a nivel de distrito y en las iniciativas de participación familiar.

GCPS District Input Form



FEDERAL PROGRAMS – OFFICE OF FAMILY ENGAGEMENT

DISTRICT PLANNING MEETING INPUT FORM 2026 - 2027

School Name: _____

Date: _____

Please return completed form to: _____

TITLE I COMPONENT	DO YOU HAVE SUGGESTIONS FOR CHANGES?		SUGGESTIONS <i>(IF YOU CHECKED YES, PLEASE WRITE YOUR SUGGESTIONS FOR CHANGE IN THIS COLUMN)</i>
	Yes	No	
1. GCPS Family and Community Engagement Plan			
2. 1% Set-Aside for Family Engagement Activities			

GCPS Family and Community Engagement Plan

Plan de participación familiar y comunitaria de GCPS



STUDENTS FAMILIES STAFF [TRANSLATE](#)

[BOARD](#) [BUDGET INFORMATION](#) [CALENDAR](#) [CAREERS](#) [DIVISIONS AND TEAMS](#) [E-SPLIT AND G.O. BOND PROGRAMS](#) [EMERGENCY PROCEDURES](#) [EVERY DAY COUNTS IN GCPS!](#) [FREQUENTLY ASKED QUESTIONS IN GCPS](#) [GCPS BY THE NUMBERS](#) [OPEN RECORDS REQUESTS](#) [OUR BLUEPRINT FOR THE FUTURE](#) [PORTRAIT OF A GRADUATE](#)
[SUPERINTENDENT](#) [STAFF DIRECTORY](#) [STAFF RESOURCES](#) [TITLE IX / NONDISCRIMINATION POLICIES](#)

[HOME](#) / [ABOUT US](#) / [DIVISIONS AND TEAMS](#) / [SCHOOL IMPROVEMENT AND OPERATIONS](#) / [DEPARTMENT OF FEDERAL PROGRAMS & COMPLIANCE](#) / [ENGAGE, EQUATE, EMPOWER SERIES](#) / [FAMILY AND COMMUNITY ENGAGEMENT PLAN](#)

Family and Community Engagement Plan



While your student may receive instruction during the school day, we know that a child's first and most important teachers are parents and family members. We know you play an integral role in the education of your child, and we want to encourage and support you to be actively involved in your child's school. We need your input, your suggestions, and your perspective to make decisions about your child's school experience. Additionally, our district receives Title I, Part A funds. Title I, Part A supplemental funds are used to enhance the educational program to meet the needs of each and every child. We use these funds to hire additional teachers in our Title I schools, to purchase technology and resources, and to train school personnel who serve as ambassadors for families and the school community.

[GCPS Family and Community Engagement Plan Video \(English\)](#)

[GCPS Family and Community Engagement Plan Video \(Spanish\)](#)

[GCPS Family and Community Engagement Plan \(Written Document\)](#)



GCPS District Input Form



FEDERAL PROGRAMS – OFFICE OF FAMILY ENGAGEMENT

**DISTRICT PLANNING MEETING
INPUT FORM
2026 - 2027**

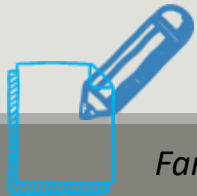
School Name: _____ Date: _____

Please return completed form to: _____

TITLE I COMPONENT	DO YOU HAVE SUGGESTIONS FOR CHANGES?		SUGGESTIONS <i>(IF YOU CHECKED YES, PLEASE WRITE YOUR SUGGESTIONS FOR CHANGE IN THIS COLUMN)</i>
	Yes	No	
1. GCPS Family and Community Engagement Plan			
2. 1% Set-Aside for Family Engagement Activities			

GCPS Family and Community Engagement Plan

- Work with families, parents, teachers, school staff and community members to develop a Family and Community Engagement Plan.
- Office of Federal Programs provides support to all Title I schools.
- Survey families for content and effectiveness of Family and Community Engagement Plan.
- Collaborate with federal, state and local programs.
- Building Capacity of Parents
- Building Capacity of School Staff



GCPS Family and Community Engagement Plan

- Trabajar con familias, padres, docentes, personal escolar y miembros de la comunidad para desarrollar un Plan de Participación Familiar y Comunitaria.
- La Oficina de Programas Federales brinda apoyo a todas las escuelas del Título I.
- Encuestar a las familias sobre el contenido y la eficacia del Plan de Participación Familiar y Comunitaria.
- Colaborar con programas federales, estatales y locales.
- Desarrollo de capacidades en los padres.
- Desarrollo de capacidades en el personal escolar.

Families, please add your comments/suggestions to the District Planning Meeting Input Form



1% Family Engagement Set-aside

Reserva del 1% para la participación familiar

Title I Family Engagement Budget:

- 1% of the GCPS Title I budget supports family engagement and is equally divided to all Title I schools to partially fund a Parent Instructional Coordinator and/or a Parent Outreach Liaison and/or to fund family engagement at schools.
- Other suggestions?



Presupuesto de Participación Familiar del Título I:

- El 1% del presupuesto del Título I de GCPS se destina a apoyar la participación familiar y se distribuye equitativamente entre todas las escuelas del Título I para financiar parcialmente a un Coordinador de Instrucción para Padres y/o a un Enlace de Alcance para Padres, y/o para financiar actividades de participación familiar en las escuelas.
- Otras sugerencias?

Save the Date!

Title I Document Review Period

Your participation doesn't end today! After we incorporate feedback from this meeting, all Title I planning documents will be available for a review period.

March 30-April 3, 2026

Documents will be on our school website, or you can view in person in our Family Center

Families, please share this information with other families you know who were unable to attend the Title I Planning Meeting. We need their input!

¡Reserven la fecha!

Período de revisión de documentos del Título I

¡Su participación no termina hoy! Después de incorporar los comentarios de esta reunión, todos los documentos de planificación del Título I estarán disponibles para un período de revisión.*d*.

Familias, por favor compartan esta información con otras familias que conozcan y que no pudieron asistir a la Reunión de Planificación de Título I. ¡Necesitamos sus aportaciones!

