



Springing into Georgia Milestones testing!

Designed to provide information about how well students are mastering the state-adopted content standards in the core content areas of English language arts, mathematics, and science.

ELA	Math	Science
Grades 3-5	Grades 3-5	Grade 5



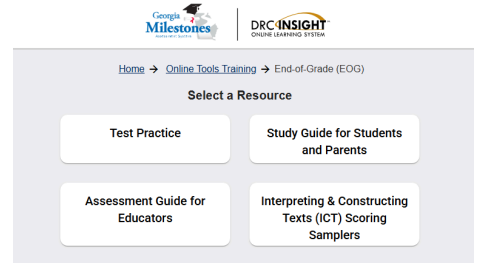
This brochure focuses on Elementary, however more information can be found online here- <https://tinyurl.com/4838pcae>

RESOURCES

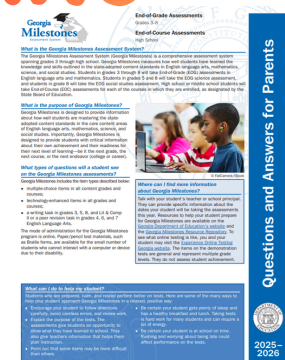
You must use Google Chrome to access this.



- This link/QR code includes...
 - Test Practice for grades 3-8 (plus 8th with Physical Sciences)
 - Student Guides for parents and students in Math, ELA, Science, and Social Studies
 - Writing Scoring Samples



FAQS FOR PARENTS



CHANGES

- 4th grade will not have a Extended Writing Task but will instead have a Peer Revision Task
- 3rd and 5th grade will write an Opinion/Argumentative Essay
- Multimodal texts will be on the assessment, such as...
 - charts, graphs, illustrations, podcasts, memoirs, diaries, journals, videos, oral presentations

OTHER IMPORTANT INFO

- What is a “Technology Enhanced Question”?
 - An innovative way to measure student skills and knowledge by using scaffolding within a multi-step process.
 - Some examples are Drag-and-Drop, Drop-Down Menu, Graphing, Keypad Input, Multi-select, and Multi-part
- If questions have multiple parts, is partial credit given?
 - Yes, partial credit is given for parts answered correctly.
- Calculators are provided in grades 6 and up.
- Field Test Questions are just new ‘trial run’ questions that don’t count toward your child’s score.





SPRING 2026 TESTING WINDOW

APRIL 27TH - MAY 12TH



3rd Grade

4/29- ELA Section 1
4/30-ELA Section 2
5/7- Math

4th Grade

5/4- ELA Section 1
5/5- ELA Section 2 & 3
5/11- Math

5th Grade

4/27- ELA Section 1
4/28-ELA Section 2 & 3
5/6- Math
5/12- Science



Make ups will be given as needed throughout the testing window.

QUESTION TYPES	# OF QUESTIONS	# OF SECTIONS	TIME PER SECTION
3RD, 5TH, 8TH, & LIT COMP ELA			
Selected Response Questions (1pt. each)	28	3	Section 1- Max 90 minutes
Technology-Enhanced Questions (2pts. each)	12		Section 2- Max 75 minutes
Extended Writing Task (8pts.)	1		Section 3- Max 75 minutes
Field Test Items (0 pts.)	8		
4TH, 6TH, & 7TH ELA			
Selected Response Questions (1pt. each)	30	3	Section 1- Max 50 minutes
Technology-Enhanced Questions (2pts. each)	15		Section 2- Max 75 minutes
Field Test Items (0 pts.)	8		Section 3- Max 75 minutes
3RD -8TH MATH			
Selected Response Questions (1pt. each)	42	2	Section 1- Max 65 minutes
Technology-Enhanced Questions (2pts. each)	8		Section 2- Max 65 minutes
Field Test Items (0 pts.)	5		
5TH SCIENCE			
Selected Response & Technology-Enhanced Questions (1 pt. each)	30	2	Section 1- Max 40 minutes
Technology-Enhanced Questions (2pts. each)	8		Section 2- Max 40 minutes
Feld Test Items (0 pts. each)	4		

