



2025 CAPITAL PROJECTS

PELHAM PUBLIC SCHOOLS



SIWANOVY ELEMENTARY COMMUNITY UPDATE

MARCH 19, 2026





- **Schematic Design complete**
- **Estimates in progress**
- **Recent meetings**
 - **Site Plan Advisory Committee, Bond Steering Committee**
- **User group and interior design meetings – ongoing**
- **Geotechnical investigations – complete**
- **Investigative testing - spring break**



DESIGN DEVELOPMENT UPDATE

PELHAM PUBLIC SCHOOLS

MARCH 19, 2026

SIWANoy DESIGN DEVELOPMENT



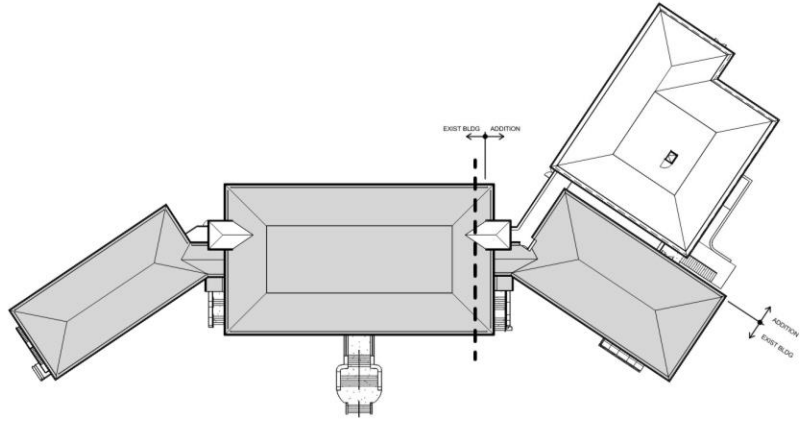


DESIGN DEVELOPMENT UPDATE

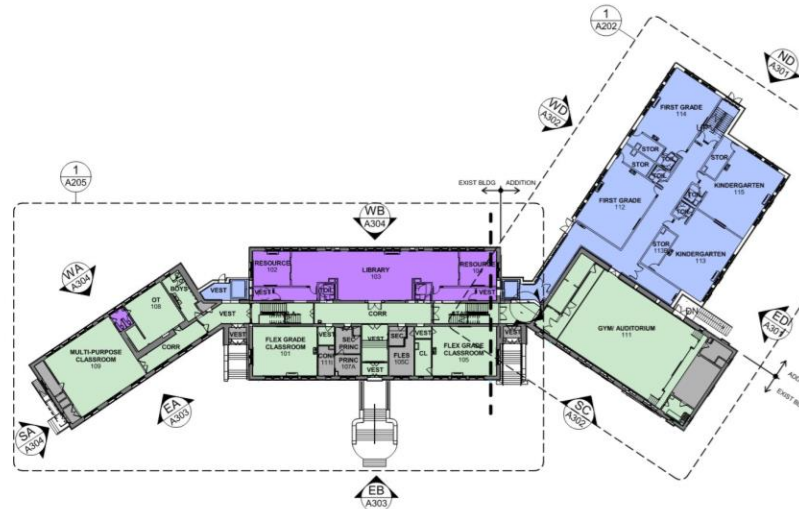
PELHAM PUBLIC SCHOOLS

MARCH 19, 2026

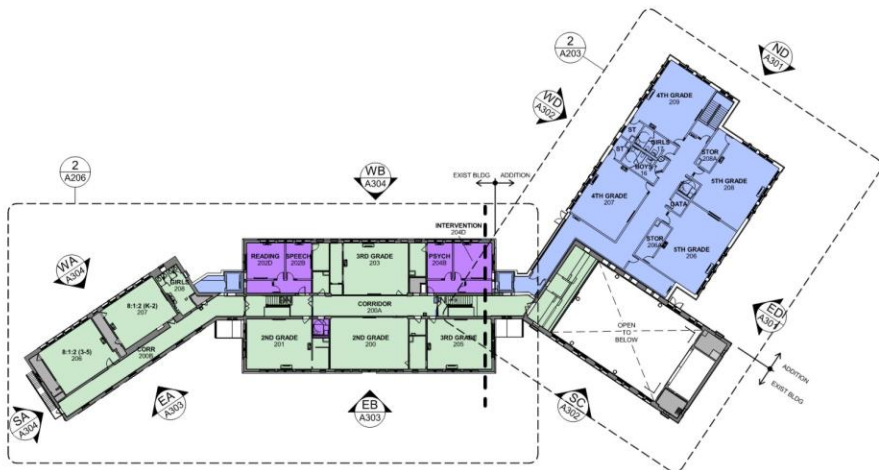
SIWANOID DESIGN DEVELOPMENT



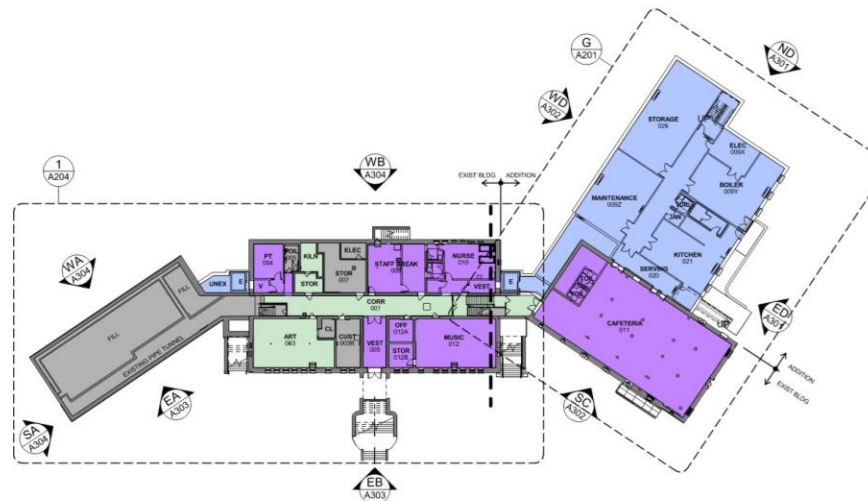
4 OVERALL ROOF PLAN
1/32" = 1'-0"



2 OVERALL FIRST FLOOR PLAN
1/32" = 1'-0"



3 OVERALL SECOND FLOOR PLAN
1/32" = 1'-0"



1 OVERALL GROUND FLOOR PLAN
1/32" = 1'-0"

DRAWING LEGEND

- (BLUE AREA SHADING) NEW ADDITION
- (PURPLE AREA SHADING) HEAVY RENOVATION TO EXISTING BUILDING (RECONFIGURED SPACES)
- (GREEN AREA SHADING) LIGHT RENOVATION TO EXISTING BUILDING
- (GRAY AREA SHADING) AREA OF NO MAJOR ARCHITECTURAL WORK BUT MAY INVOLVE MECH OR OTHER WORK (SEE MEP DRAWINGS FOR MORE INFO)



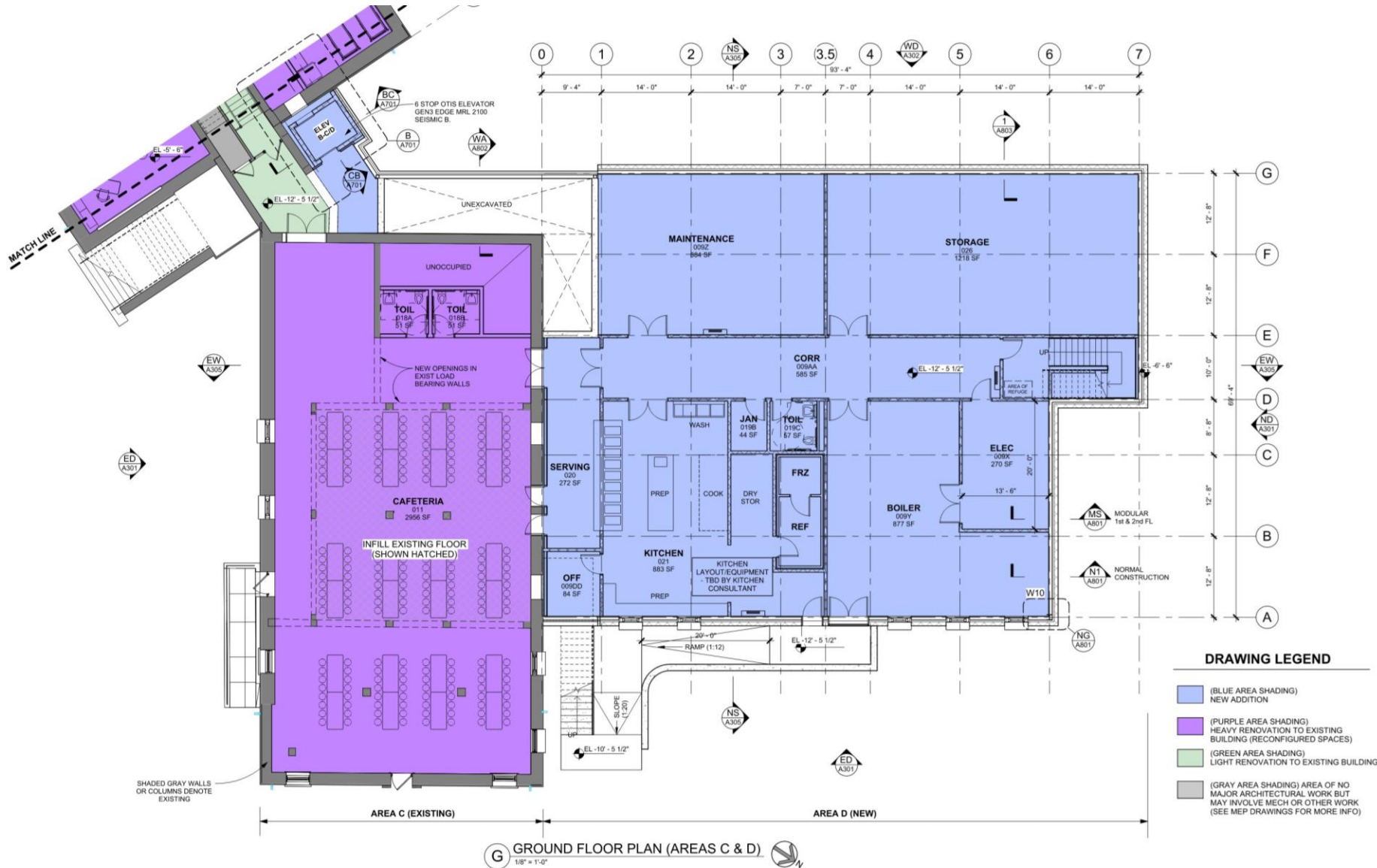


DESIGN DEVELOPMENT UPDATE

PELHAM PUBLIC SCHOOLS

MARCH 19, 2026

SIWANOID DESIGN EVELOPMENT



G GROUND FLOOR PLAN (AREAS C & D)
1/8" = 1'-0"



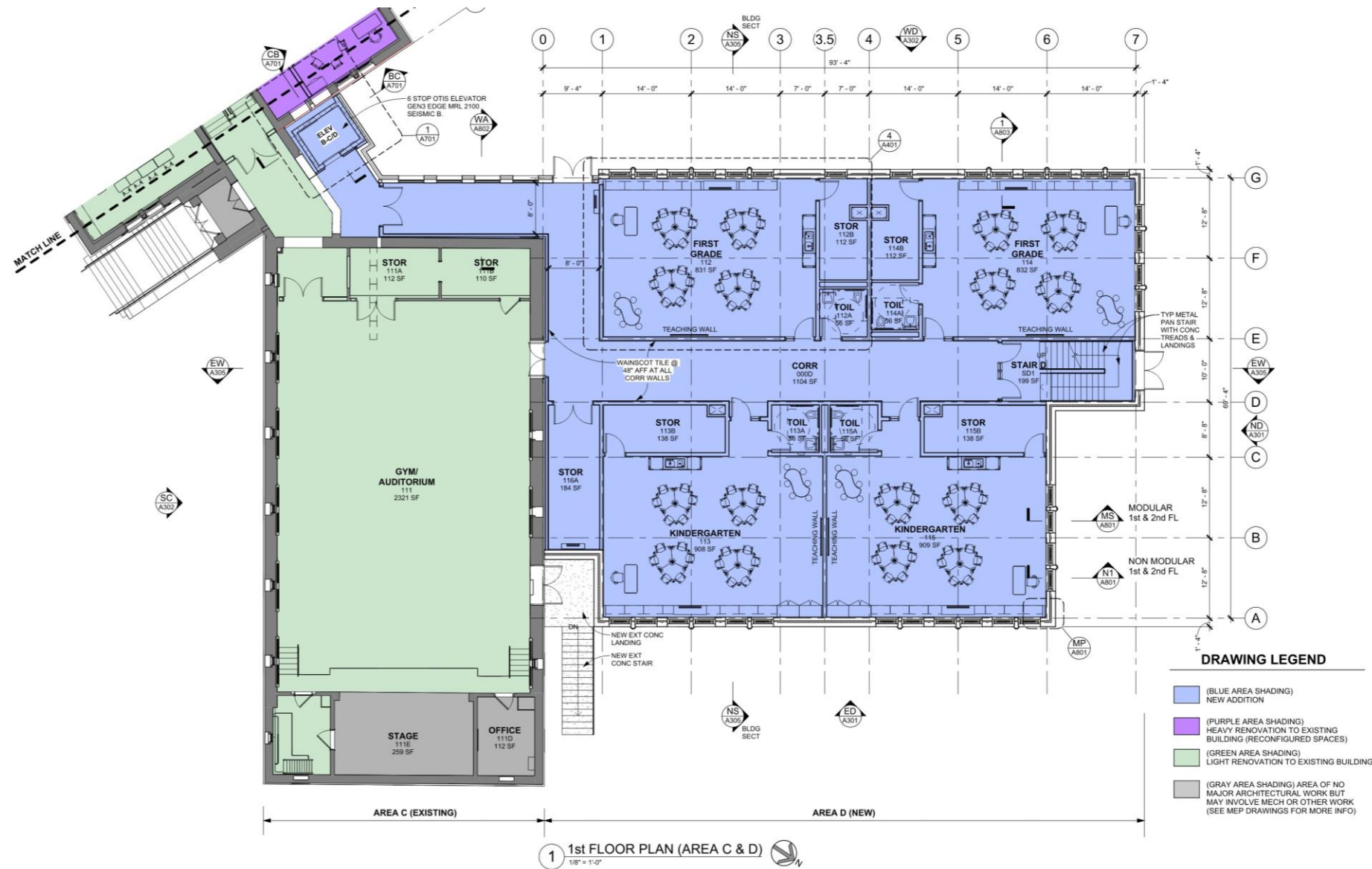


DESIGN DEVELOPMENT UPDATE

PELHAM PUBLIC SCHOOLS

MARCH 19, 2026

SIWANOID DESIGN EVELOPMENT



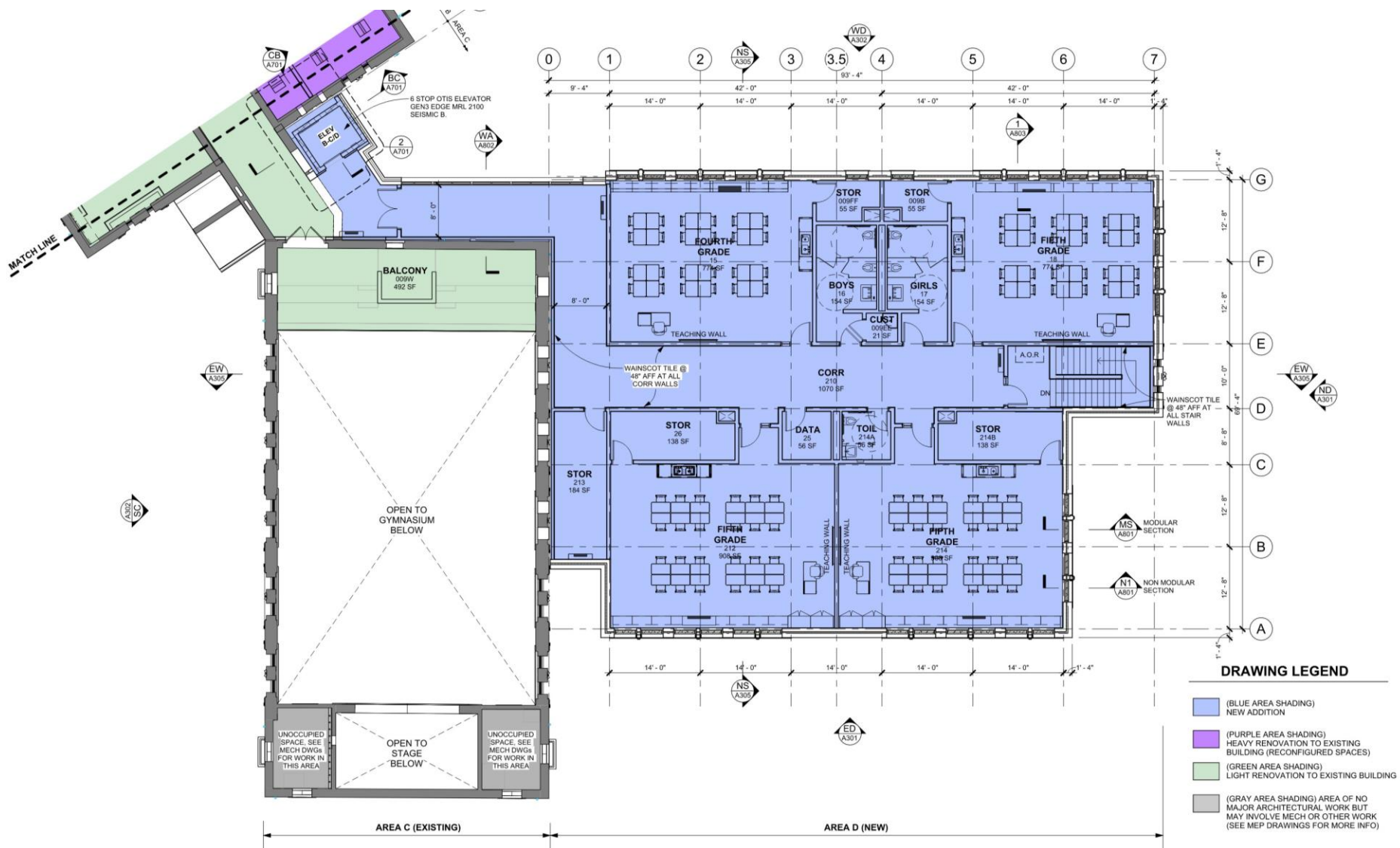


DESIGN DEVELOPMENT UPDATE

PELHAM PUBLIC SCHOOLS

MARCH 19, 2026

SIWANOVY DESIGN EVELOPMENT



2 2nd FLOOR PLAN (AREA D)
1/8" = 1'-0"



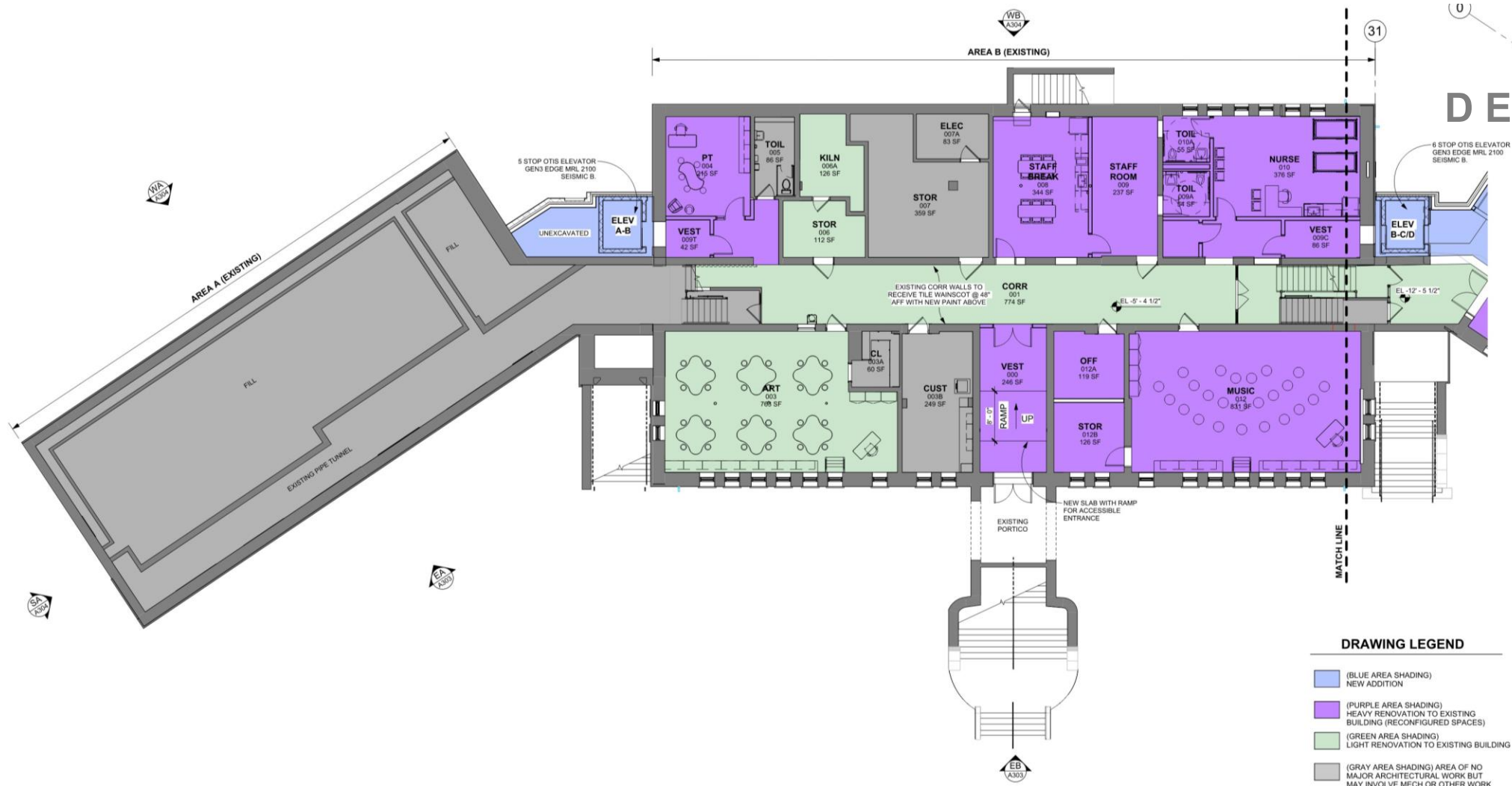


DESIGN DEVELOPMENT UPDATE

PELHAM PUBLIC SCHOOLS

MARCH 19, 2026

SIWANOID DESIGN DEVELOPMENT



DRAWING LEGEND

- (BLUE AREA SHADING) NEW ADDITION
- (PURPLE AREA SHADING) HEAVY RENOVATION TO EXISTING BUILDING (RECONFIGURED SPACES)
- (GREEN AREA SHADING) LIGHT RENOVATION TO EXISTING BUILDING
- (GRAY AREA SHADING) AREA OF NO MAJOR ARCHITECTURAL WORK BUT MAY INVOLVE MECH OR OTHER WORK (SEE MEP DRAWINGS FOR MORE INFO)

1 GROUND FLOOR PLAN (AREA A&B) 1/8" = 1'-0"



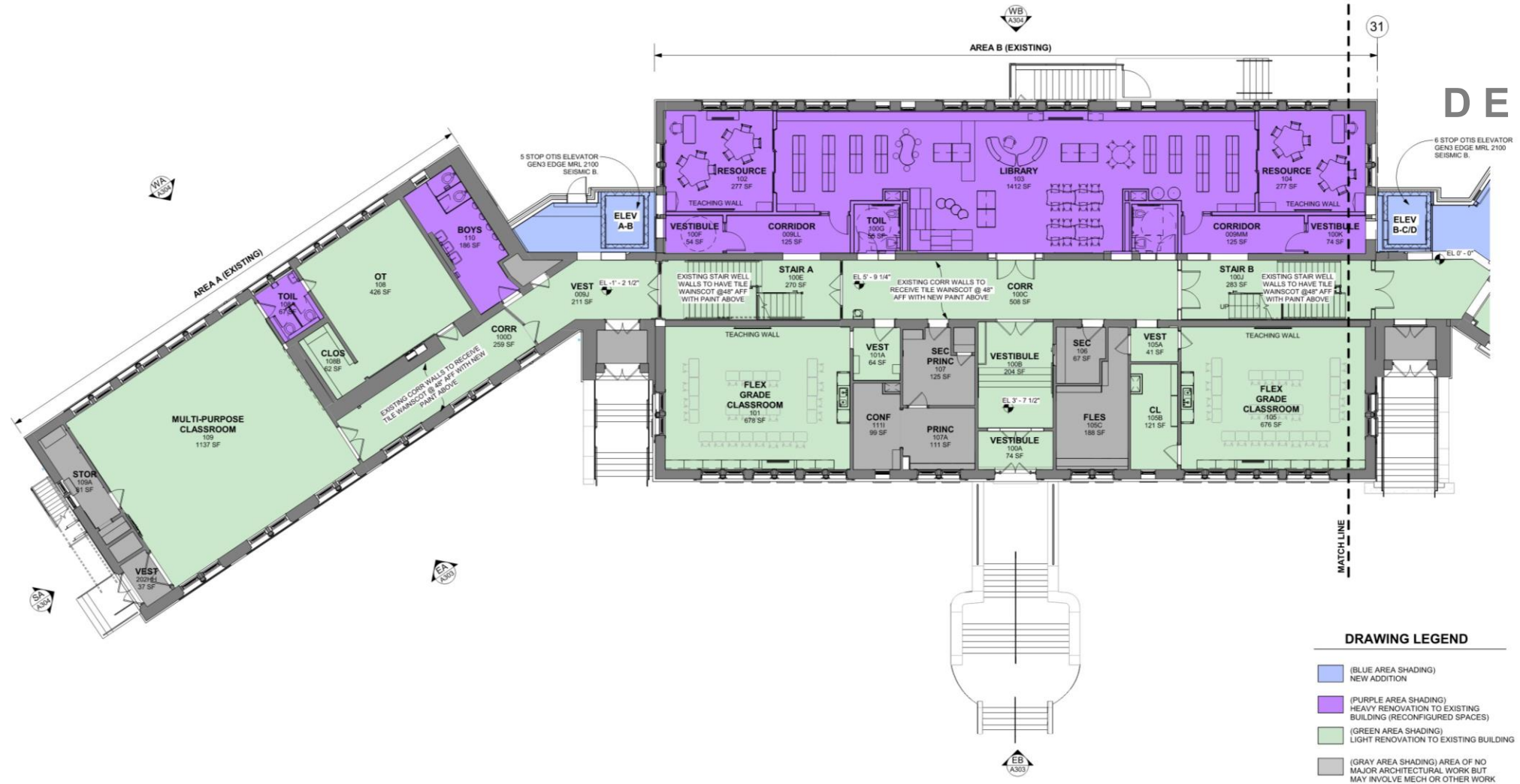


DESIGN DEVELOPMENT UPDATE

PELHAM PUBLIC SCHOOLS

MARCH 19, 2026

SIWANoy DESIGN DEVELOPMENT



DRAWING LEGEND

- (BLUE AREA SHADING) NEW ADDITION
- (PURPLE AREA SHADING) HEAVY RENOVATION TO EXISTING BUILDING (RECONFIGURED SPACES)
- (GREEN AREA SHADING) LIGHT RENOVATION TO EXISTING BUILDING
- (GRAY AREA SHADING) AREA OF NO MAJOR ARCHITECTURAL WORK BUT MAY INVOLVE MECH OR OTHER WORK (SEE MEP DRAWINGS FOR MORE INFO)

1 1st FLOOR PLAN (AREA A&B)
1/8" = 1'-0"



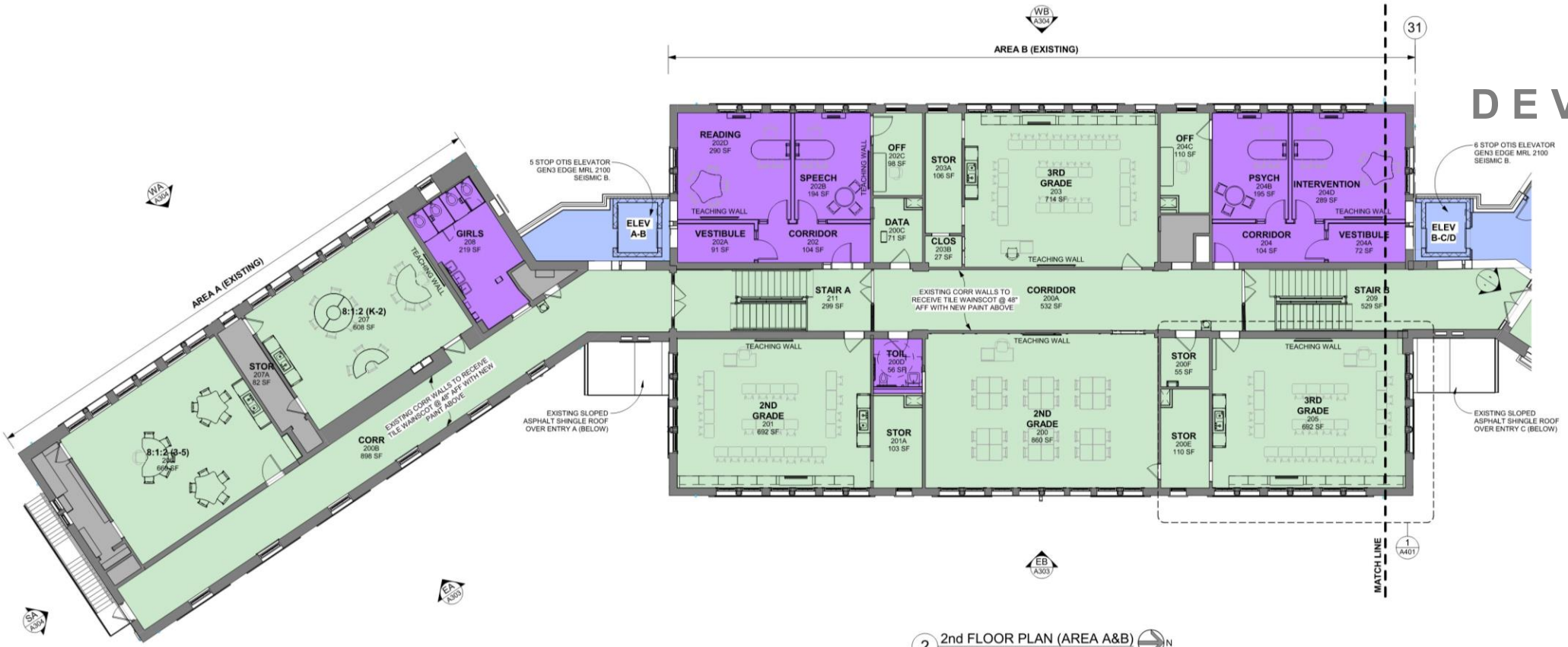


DESIGN DEVELOPMENT UPDATE

PELHAM PUBLIC SCHOOLS

MARCH 19, 2026

SIWANOY DESIGN DEVELOPMENT



2 2nd FLOOR PLAN (AREA A&B)
 1/8" = 1'-0"

DRAWING LEGEND

- (BLUE AREA SHADING) NEW ADDITION
- (PURPLE AREA SHADING) HEAVY RENOVATION TO EXISTING BUILDING (RECONFIGURED SPACES)
- (GREEN AREA SHADING) LIGHT RENOVATION TO EXISTING BUILDING
- (GRAY AREA SHADING) AREA OF NO MAJOR ARCHITECTURAL WORK BUT MAY INVOLVE MECH OR OTHER WORK (SEE MEP DRAWINGS FOR MORE INFO)



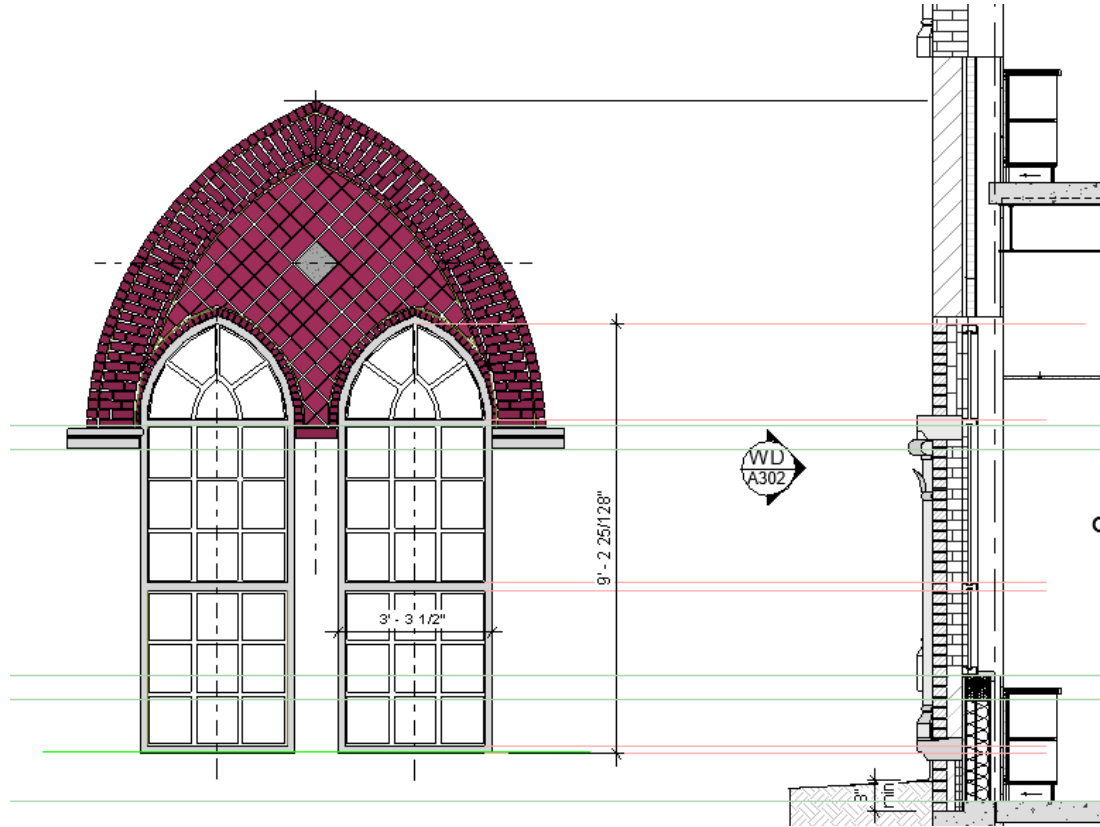


DESIGN DEVELOPMENT UPDATE

PELHAM PUBLIC SCHOOLS

MARCH 19, 2026

SIWANOID DESIGN DEVELOPMENT





SIWANOY
SITE
DEVELOPMENT

Site Advisory Committee Comments

- **Enhance fencing and security**
- **Maintain pedestrian path through the site**
- **Elaborate on proposed plant species**
- **Elaborate on stormwater mitigation**

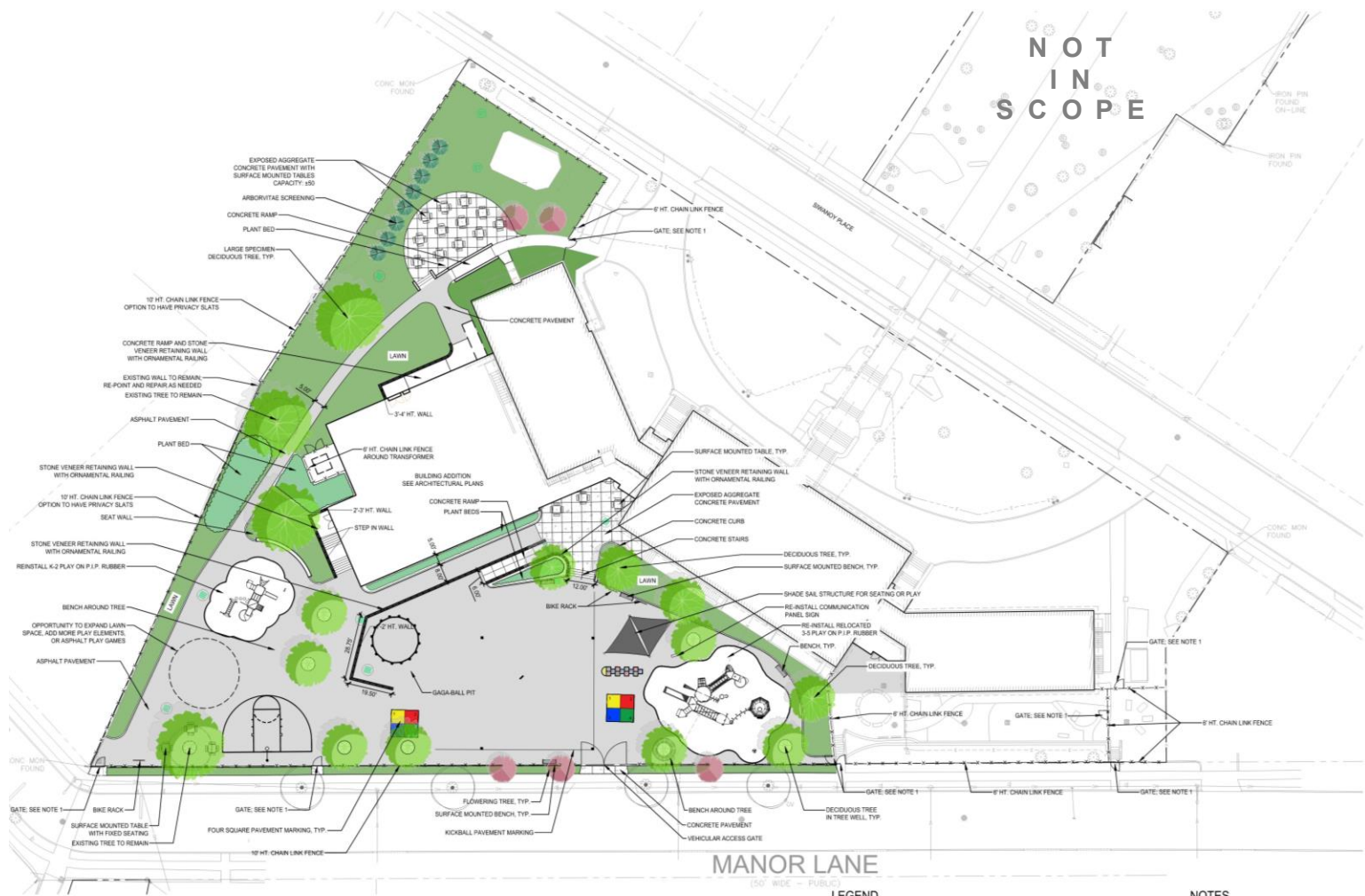


DESIGN DEVELOPMENT UPDATE

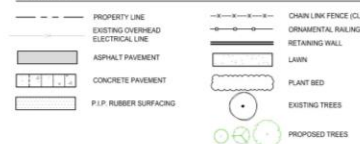
PELHAM PUBLIC SCHOOLS

MARCH 19, 2026

SITE PLAN



LEGEND



NOTES

- ALL GATES TO HAVE SWIPE ACCESS AND ELECTRONIC SCHEDULE CONTROL ON LOCKS.



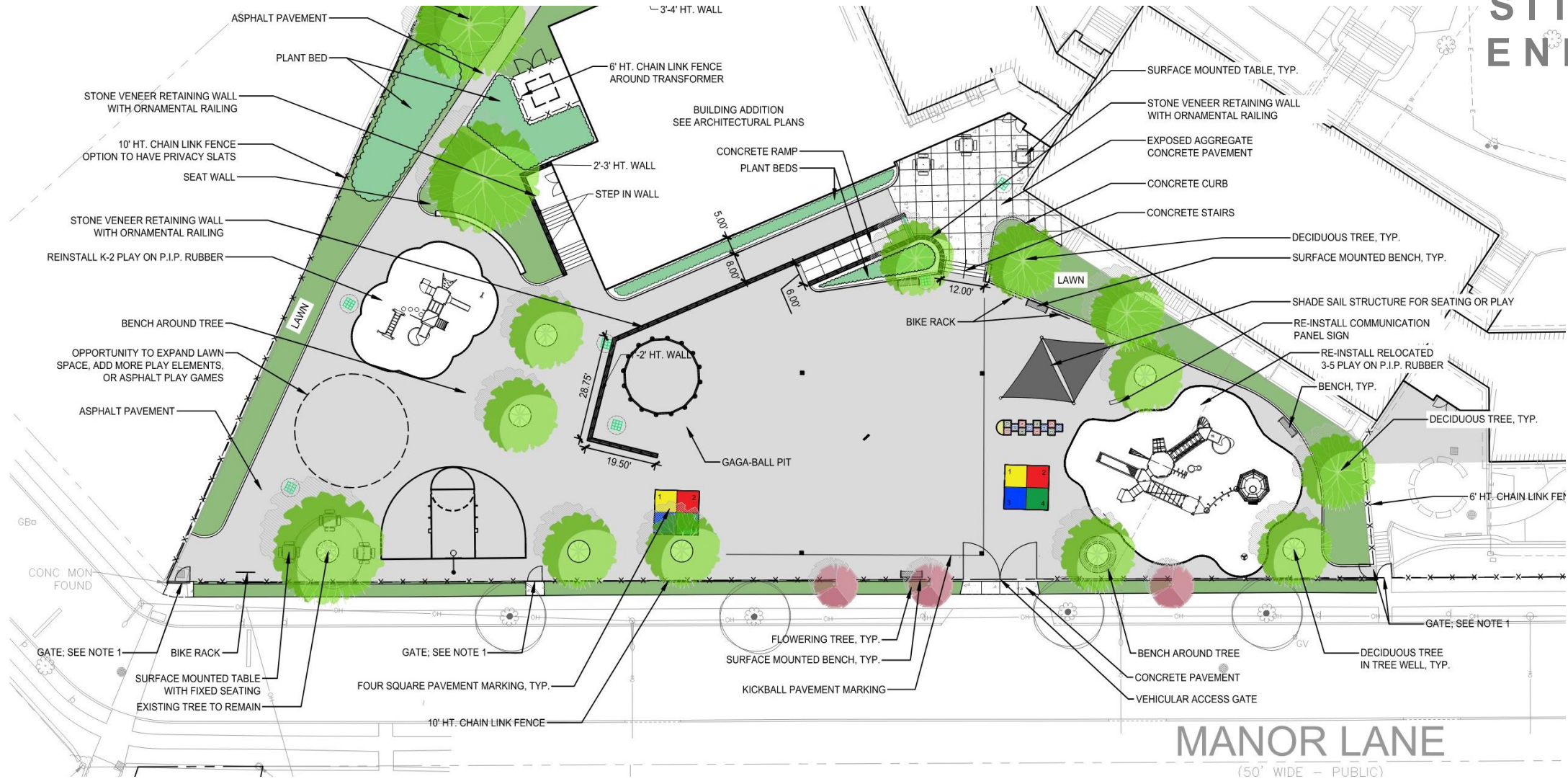


DESIGN DEVELOPMENT UPDATE

PELHAM PUBLIC SCHOOLS

MARCH 19, 2026

SITE PLAN ENLARGED



MANOR LANE
(50' WIDE - PUBLIC)





DESIGN DEVELOPMENT UPDATE

PELHAM PUBLIC SCHOOLS

MARCH 19, 2026

TREES & PLANTING



Acer rubrum 'Sun Valley' | Sun Valley Red Maple
- Excellent fall color
- 25'-35' max height
- Shorter variety ideal for urban areas



Amelanchier grandifolia 'Autumn Brilliance' | Autumn Brilliance Serviceberry
- Excellent fall color
- 15'-25' max height / 15'-20' spread



Cercis canadensis | Eastern Redbud
- Excellent fall color
- 20-30' max height / 25'-35' spread
- Hardy species ideal for urban areas



Cornus florida | Flowering Dogwood
- Excellent fall color
- 15'-30' max height and spread



Thuja plicata | Green Giant Arborvitae
- fast growing for privacy screening
- 40'-60' max. height / 3'-4' max. spread
- low maintenance



Quercus alba | White Oak
- Large specimen tree to replace the one on campus impacted by construction
- 80'-100' max height / 50'-80' spread
- Slow growing, durable

Plant Palette | Trees

Siwanoy Elementary School | Pelham Manor, NY





DESIGN DEVELOPMENT UPDATE

PELHAM PUBLIC SCHOOLS

MARCH 19, 2026

TREES & PLANTING



Hydrangea arborescens | Smooth Hydrangea 'Annabelle'
 - Native; Likes moist soils
 - 3'-5' max. height / 4'-6' max. spread
 - Bloom: June - September



Hydrangea quercifolia | Oakleaf Hydrangea 'Ruby Slippers' (smaller) or 'Snow Queen' (larger)
 - Hedge Use; Very Hardy
 - 3'-6' max height / 3'-8' max. spread
 - Bloom: May - July; Excellent Fall color



Ilex glabra | Inkberry 'Compact' or 'Shamrock'
 - Native; Winter interest
 - 2'-4' max height / 3'-4' spread



Itea virginica | Virginia Sweetspire 'Little Henry'
 - Native; Tolerates shade
 - 1'-2' max height / 2'-3' spread
 - Bloom: June - July



Lindera benzoin | Spicebush
 - Native; Excellent fall color
 - 6'-12' max. height and spread
 - Likes moist soils
 - Hedge use



Physocarpus opulifolius | Ninebark 'Coppertina' or 'Diablo'
 - Species is native, varieties are cultivated
 - Bark provides winter interest
 - 4'-8' max height and spread
 - Bloom: May - June; Excellent Fall color



Rhus aromatica | Fragrant Sumac 'Gro-Low'
 - Native; Very hardy and adaptable groundcover
 - 1'-2' max height / 6'-8' spread
 - Bloom: April - May; Excellent Fall color



Viburnum dentatum | Arrowwood Viburnum
 - Species is native, varieties are cultivated
 - 6'-10' max height and spread
 - Hedge use
 - Bloom: May - June

Plant Palette | Shrubs

Siwanoy Elementary School | Pelham Manor, NY





DESIGN DEVELOPMENT UPDATE

PELHAM PUBLIC SCHOOLS

MARCH 19, 2026

TREES & PLANTING



Aruncus dioicus | Goatsbeard
- Native; Likes moist soils
- 4'-6' max. height / 2'-4' max. spread
- Bloom: April - May



Asclepias tuberosa | Butterfly Weed
- Native; Low maintenance
- 1'-2.5' max height / 1'-2' max. spread
- Bloom: June - August



Echinacea purpurea | Purple Coneflower
- Native; Low maintenance
- 2'-5' max height / 2'-3' spread
- Bloom: June - August



Eragrostis spectabilis | Purple Lovegrass
- Native; Tolerates shade
- 1'-2' max height / 2'-3' spread
- Bloom: June - July



Pachysandra procumbens | Allegheny Spurge
- 6"-1' max. height / 1'-2' spread
- Hardy groundcover
- Low maintenance



Packera aurea | Golden Groundsel
- Native; Enjoys moist soils
- Hardy groundcover
- 6"-2.5' max height / 6"-1.5' spread
- Bloom: April; Low maintenance



Physostegia virginiana | Obedient plant
- Native; Enjoys moist soils
- 3'-4' max height / 2'-3' spread
- Bloom: June - September
- Very hardy, adaptable



Symphyotrichum oblongifolium | 'October Skies' Aromatic Aster
- Species is native; variety is cultivated
- Very hardy and drought tolerant
- 1.5'-2' max height and spread
- Bloom: August - October



Plant Palette | Perennials, Grasses, and Groundcovers

Siwanoy Elementary School | Pelham Manor, NY





SCHEDULE

- **Design completion – June 2026**
- **NYSED permitting – July to September 2026
(estimated)**
- **Bidding – Fall 2026**
- **Commence construction – Spring 2027**



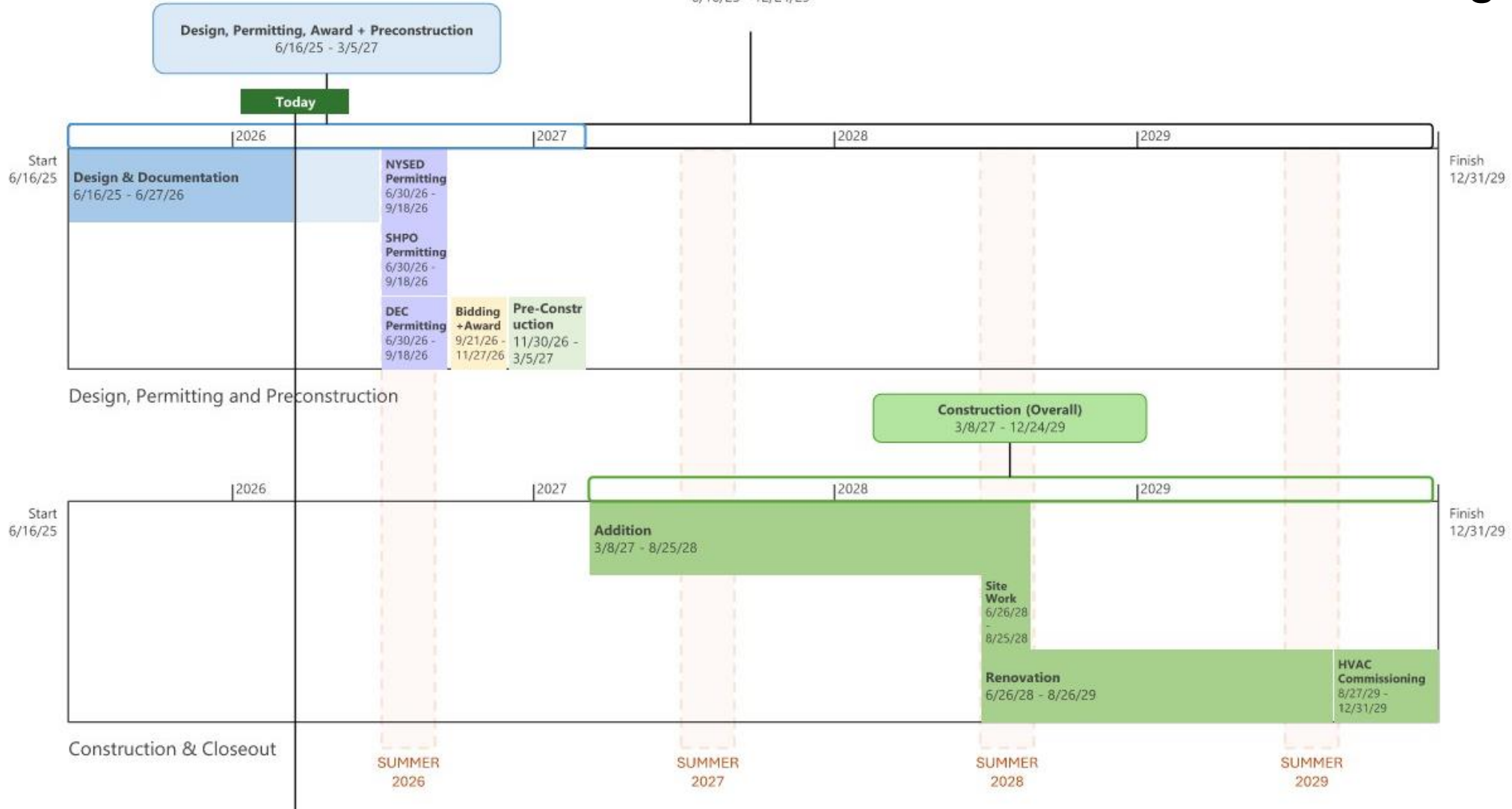
DESIGN DEVELOPMENT UPDATE

PELHAM PUBLIC SCHOOLS

MARCH 19, 2026

SCHEDULE

Siwanoy Elementary Additions & Alteration (Overall)
6/16/25 - 12/24/29





2025 CAPITAL PROJECTS

PELHAM PUBLIC SCHOOLS



SIWANoy ELEMENTARY COMMUNITY UPDATE

MARCH 19, 2026

