



**PROJECT: MIDDLE SCHOOL MEDIA CENTER RENOVATIONS
AL STANBACK MS, GRAVELLY HILL MS, ORANGE MS**

CRA PROJECT #: 2601.01, 2601.02, 2601.03

DATE: 4/1/2026

+++++

MODIFICATIONS TO THE CONTRACT DOCUMENTS FOR THE ABOVE-NAMED PROJECT SHALL BE MADE AS DESCRIBED BELOW AND SHALL BE INCLUDED IN THE BID AMOUNTS:

A. PRE-BID CONFERENCE

The Pre-Bid Conference was held at 9:00am, Wednesday, Wednesday, March 25, 2026 in the Media Center at Gravelly Hill Middle School, Efland, North Carolina. Each of the three schools was visited after the initial meeting. See the attached conference minutes for a summary of those items covered. These minutes shall be included in the contract documents. RFI Log intentionally does not include items 1, 2, 7, and 26.

B. ARCHITECTURAL SPECIFICATIONS

- 1. **Section 122413 – ROLLER WINDOW SHADES:** add Specification Section 122413 – ROLLER WINDOW SHADES to the project manual for Gravelly Hill Middle School Media Center Renovation.

C. DRAWINGS

- 2. **Sheet A100, A101, A102, A201:** AL Stanback Middle School Media Center Renovation, replace sheets A100, A101, A-102, A201.

END OF ADDENDUM

Attachments:

Pre-Bid Conference Minutes.

OCS Media Center RFI Log – Middle Schools.

Specification Section 122413 ROLLER WINDOW SHADES.

Sheets A100, A101, A102. A201.



Meeting Minutes

Attendees: Tedd Clippinger, CRA Associates, Inc. (author)
OCS: Steve Hess (SH), Melanie Gartrell,
Contractors: 10 Individuals representing 9 Contractors

CRA Job #: 2601.01, 2601.02, 2601.03

Job Name: OCS Middle School Media Center Renovations
A.L. Stanback Middle School, Gravelly Hill Middle School, Orange Middle School

RE: Pre-Bid Meeting

Date/Place: March 25, 2026, at 9:00 am at Gravelly Hill Middle School. Each school was visited following the initial pre-bid conference.

The purpose of the meeting was to address project specific questions, issues, bidding procedures and bid forms. The following items were discussed:

GENERAL

1. Steve Hess stated Orange County Schools would issue one bid form to include all five schools.
2. SH stated that there should be one bid bond to include all five schools.
3. SH stated he will be the point of contact through bidding, after which the point of contact will transition to Melanie Gartrell.
4. SH stated each of the five school projects will be awarded to one Contractor
5. The Contractor will be required to provide direct supervision at each school while work is happening. This does not mean, that full-time supervision is required at each school, but that no Subcontractor shall be working in any school without direct supervision present from the General Contractor.
6. SH stated the Contractors should not anticipate sprinkler heads to be required to be turned up at schools where sprinkler work is being performed. The School Representative will work with the Authority Having Jurisdiction to accommodate the request.
7. Devices should remain in place throughout the work area unless noted otherwise.
8. It was pointed out that lights could be a long lead item. A Contractor asked if the school was open to alternative fixtures. SH stated the schedule is a priority and the school intends on issuing a Notice to Proceed in May to begin the submittal process. If the lights are identified at that time to be an issue, then alternative fixtures can be reviewed.

GRAVELLY HILL MIDDLE SCHOOL

9. 3/A201 Note states "REPAINT HM WINDOW FRAMES, TYP" on exterior wall facing east. It was pointed out that the exterior windows are clear anodized aluminum storefront. The note will be eliminated; these existing windows will not be painted.
10. Question was asked if walls and ceiling surfaces in monitors above the canted soffit is to be painted. Yes, all GWB surfaces in the monitor are to be painted. The drawings will be updated to show the extent of painting in the monitors.
11. Clarify the extent of the Contractor's responsibility for removal of and reinstallation of devices and elements attached to the walls. i.e. cameras, devices, TVs, etc.
12. Contractor is responsible for removal of fixed shelving.

ORANGE MIDDLE SCHOOL

13. Is a plumbing permit necessary? Will need to be determined.
14. Who monitors the Fire Alarm? Everon
15. What is to be done with the data on the existing columns? Refer to answers to RFIs.
16. Drawings call for filling door openings with Masonry, openings have drywall above the door head, what is the extent of masonry? Refer to answers to RFIs.
17. A Contractor stated entry doors to Media Center are fire-rated, will new door be required? SH stated, yes, new doors and hardware will be required.
18. What is to be done with the frames? SH stated, point-up and paint the existing hollow metal frames at the doors.
19. Contractor is responsible for removal of fixed shelving.

AL STANBACK MIDDLE SCHOOL

20. Contractor is responsible for removal of fixed shelving.
21. Partitions surrounding the new IT Specialist office were noted to be metal stud with GWB, in lieu of masonry as noted in the drawings.

Above is the author's recollection and understanding of the items that were raised at the conference. If there are any additions, changes or clarifications needed for any of the above items, please contact the author as soon as possible.

Signed:

Theodore B. Clippinger, AIA, NCARB, LEED AP
Vice-President

Orange County Schools Media Center Renovations Bid Proposal Form	
Firm	Date
Street Address	Tax EIN
City, State, ZIP	Email
Principal Place of Business (if different from above)	Telephone
<i>AL Stanback Middle School Media Center Cost</i>	
<i>Gravelly Hill Middle School Media Center Cost</i>	
<i>Alternate #1: Gravelly Hill MS Electric Roller Shades including shade upgrade, power and controls.</i>	
<i>Orange Middle School Media Center Cost</i>	
<i>Pathways Elementary School Media Center Cost</i>	
<i>Riverpark Elementary School Media Center Cost</i>	
<i>Alternate #2: Riverpark Elementary Corridor Flooring</i>	
<i>Allowance #1: Building Permits for all Projects</i>	\$ 15,000.00
<i>Allowance #2: 100 LF Conduit & Data Cable to Orange Middle Teledata Closet</i>	
Total Project Cost	
<i>Confirmation Minority Reporting Form (Affadavit A or B) Included</i>	
<i>Confirmation of Single Bid Bond for Entire Five Projects Included</i>	
<p><i>In compliance with this Invitation for Proposals, and subject to all the conditions herein, the undersigned offers and agrees to furnish and deliver any or all items upon which prices are proposed, at the prices set opposite each item within the time specified herein. By executing this proposal, I certify that this proposal is submitted competitively and without collusion.</i></p> <p><i>Failure to execute/sign proposal prior to submittal shall render bid invalid. Late proposals are not acceptable.</i></p>	
<p>The Bidder further proposes and agrees hereby to commence work under this Contract on a date to be specified in a written order by the Architect and shall fully complete all work thereunder by the date specified in the Contract Documents.</p> <p>The undersigned acknowledges receipt of the following addenda, and confirms that they were utilized in the computation of this Proposal:</p>	
<i>Addendum # _____</i>	<i>Dated</i>
<i>Addendum # _____</i>	<i>Dated</i>
<i>Addendum # _____</i>	<i>Dated</i>
<p><i>Signature below acknowledges that each project shall have responsible party from the GC onsite whenever work is in process, and that all five projects must be complete by Tuesday August 18, 2026.</i></p>	
Print Name	Signature

OCS Media Center RFI Log		Request For Information Log		
Item	General Trade Description	Question	Question Date	Response
1	Riverpark Documents	Can you please also point out that there were no documents at all for Riverpark.	3/23/26	Reference "OCS Elementary School Media Center Flooring" which does include documents for Riverpark Elementary.
2	MS Specs pertain to ES	I noticed that for most of the schools the plans and specs are combined into one document, however for Pathways, there are only 4 drawing pages but no specifications. Am I missing something, or are there no specs for the Pathways portion of the project?	3/23/26	The specifications for the the middle school media centers will apply to the elementary school media centers.
3	\$500 LDs	I see the completion time frame is 66 days. Are there any liquidated damages?	3/23/26	LDs will be \$500 per day per site. OCS will work with the selected contractor to expedite the project schedule.
4	Award to One Contractor	Is it the intent of the owner to award all 4 schools to 1 General Contractor or is each project being bid separately meaning there could be 4 different General Contractors awarded the projects?	3/23/26	Per the Owner's RFP, "The five renovations will be awarded to one general contractor."
5	LOI on 4/14/26	Letter of Intent to Award on April 14, 2026.	3/23/26	We will issue a letter of intent to award on April 14, 2026 and a NTP on April 21, 2026.
6	Single Bid Bond	There are 3 bid bonds, one for ALSMS, GHMS, and OMS. Are these to be put in a separate envelope? The specs say a separate envelope but the RFP says it can be included in the same envelope as the bid.	3/23/26	Contractors can submit one bid bond to cover the total of five projects. The bid bond can be included in the sealed bid envelope.
7	Overall Proposal Form	There isn't a proposal (bid) form for Pathways ES and Riverpark ES, are these 2 schools only to be included on the proposal cover page?	3/23/26	The two elementary school costs should be included on the proposal cover page.
8	OMS Fire Alarm New Offices	10.Any Fire alarm required for the added 3 offices and workroom in the Orange county middle school? Yes, FA will be required for the (3) added offices and workroom at OMS.	3/24/26	Yes, FA will be required for the (3) added offices and workroom at OMS.
9	Receptacles in Shelving Toe Kick	11. There are a couple of outlets shown that are off the walls are these to be floor boxes? In the ceiling? In particular I am looking @ AL Stanback up closer to the exit door in the glass wall, Another one outside the video production? And plan north of IT specialist. There are a couple shown similar on the Gravelly electrical plans	3/24/26	The outlets shown "off the wall" are to be extended in the base/toe kick of fixed perimeter shelving which will be installed as a part of the furniture package. The GC shall hire electrician to rough in and install these outlets, coordinating with shelving installer.
10	Gravelly Hill Paint above Baffles	Are we painting above the 45 degree wall @ Gravelly hill above the baffles?	3/24/26	Yes, paint above the 45 degree wall at Gravelly Hill above the baffles.
11	AV Coordination	Can you please confirm if the GC is to remove and reinstall any of the following items off the walls to paint or the ceiling grid for replacement of ceiling grid? TV's, Projectors, projection screens & speakers	3/24/26	Contractor to coordinate installation of new sound system in ceiling. Owner will remove all AV equipment prior to GC mobilization.
12	OMS Data Conduit Allowance	Can you provide a location for the IT closets for orange county middle so we can estimate the length of conduit needed for the DATA.	3/24/26	Assume 100 LF—provide unit price so that we can reconcile during construction.
13	HVAC Controls Schneider	Can you provide the HVAC controls vendor for Orange County Middle school	3/24/26	Schneider is the controls contractor for OCS.

OCS Media Center RFI Log		Request For Information Log		
Item	General Trade Description	Question	Question Date	Response
14	Protect & Correct Low Voltage Wiring	How do we address existing data and low voltage cable?	3/24/26	Contractor to hang and protect any WAP and coordinate re-installation with OCS. Contractor to protect all existing low voltage wiring and hang from ceiling in order to meet inspections requirements if it is not hung properly.
15	Existing FA System Everon	How do we address existing FA system?	3/24/26	The existing FA is to remain. The Fire Alarm system will need to be placed in test during construction, and active at the end of each work day. The FA contractor is Everon.
16	Exposed Outlets	If outlets are in existing masonry walls are we able to surface mount the conduit and boxes?	3/24/26	All outlets should be hidden in walls unless currently surface mounted and in conduit.
17	Sex Offender Registry	The selected GC will be required to perform Sex Offender Registry check for all staff onsite, and maintain a sign in sheet onsite. The registry is free. Reference Sex Offender Registry Form in bid package.	3/24/26	The selected GC will be required to perform Sex Offender Registry check for all staff onsite, and maintain a sign in sheet onsite. The registry is free. Reference Sex Offender Registry Form in bid package.
18	Infill Openings Impact Resistant Drywall	The doors that we are demoing in orange county middle show that we are to infill masonry in the opening; Currently above the door is drywall "bulkhead" Are we to demo the drywall bulkhead and extend the masonry to the acoustical ceiling height? Higher to deck?	3/24/26	Remove the drywall bulkhead, provide a drywall infill from floor to top of existing bulkhead, use impact resistant drywall.
19	OMS Data Outlets	There is some low voltage "outlets" on the columns that we are wrapping in the orange county middle school; Are we to "extend" the outlet to the drywall face? Plan on extending electrical outlets on exposed columns to face of columns that get wrapped.	3/24/26	Data outlets to be abandoned.
20	\$15,000 Permit Allowance	Can you verify we are to include 3 lump sum allowances of \$5,000 each for permits for a total of \$15,000?	3/26/26	Include a total of \$15,000 Allowance for all permits.
21	Spaces Unoccupied During Construction	Will the spaces be occupied during construction?	3/27/26	Spaces will not be occupied during construction.
22	GC to provide temp facilities	Will we be required to provide temporary facilities such as Porta Johns, or pay for power/ water?	3/27/26	GC should provide temporary toilets and handwashing stations. Water will be accessible from exterior hosebib.
23	Replace ACT Grid & Tile	1.The Gravelly Hill Middle School Reflected Ceiling Plan has no notes or any real direction of what is happening with the ceiling on this school. What is happening with the ceiling here is it getting demoed? Adjusted? 2.None of the reflected ceiling plans have any real notes or direction. IS the ceiling being replaced on schools with a reflected ceiling plan?	3/30/26	The acoustical ceiling tile and aluminum grid is being replaced in entirety at AL Stanback MS, Gravelly Hill MS, and Orange MS.
24	Gravelly Hill Manual Shade Spec	gravelly sheet e100 notes bid alternate to provide electrical for blinds.... are we to include blinds in alternate or just electrical for owner provided and installed?? if we are to provide and or install, please clarify scope and spec.	3/30/26	Base Bid: GC to include manual rollershades Reference specifications: Basis-of-Design Product: Subject to compliance with requirements, provide Hunter Douglas Architectural Window Coverings; Manual RB500 Roller Shade, or a comparable product...

OCS Media Center RFI Log		Request For Information Log		
Item	General Trade Description	Question	Question Date	Response
25	Gravelly Hill Electric Shade Alternate	Alternate was mentioned in previous response. Also noted on gravelly sheet e100. What are the alternates for this bid and where can they be found?? Also, there is no place on the bid form for alternates??	3/30/26	Electric Rollershade Alternate: Reference specifications and electrical drawings to provide turnkey electric roller shades with controls/switch adjacent to circulation desk.
26	Riverpark Casework Remove & Reinstall	Drawing D1 for River Park ES calls for us to remove and reinstall casework after carpet and base install. However drawing A1 calls for us to protect in place this casework. Which is correct?	3/26/26	The case work along the wall will need to be removed and replaced. This answer has been provided by OCS--CRA takes no responsibility or liability for this answer since they are not Architect of Record for the flooring dwgs at Riverpark.
27	AL Stanback Gravelly Hill Demo Media Cases	Reference revised dwgs for AL Stanback--Contractor shall demolish doors and frames and provide sheetrock cased openings and soffits at former display cases. Prep and paint all sides of HM window frames.	4/1/26	
End of Clarifications			4/1/26	

GRAVELLY HILL MIDDLE SCHOOL MEDIA CENTER RENOVATION
ORANGE COUNTY SCHOOLS

SECTION 122413 - ROLLER WINDOW SHADES

PART 1 - GENERAL

1.1 RELATED DOCUMENTS

- A. Drawings and general provisions of the Contract, including General and Supplementary Conditions and Division 01 Specification Sections, apply to this Section.

1.2 SUMMARY

A. Section Includes:

- 1. Manually operated roller shades with single rollers.
- 2. Motor-operated roller shades with single rollers. **ALTERNATE**

B. Related Requirements:

- 1. Section 061000 "Rough Carpentry" for wood blocking and grounds for mounting roller shades and accessories.
- 2. Section 079200 "Joint Sealants" for sealing the perimeters of installation accessories for light-blocking shades with a sealant.

1.3 ACTION SUBMITTALS

A. Product Data: For each type of product.

- 1. Include construction details, material descriptions, dimensions of individual components and profiles, features, finishes, and operating instructions for roller shades.

B. Sustainable Design Submittals:

- 1. Submit documentation of recycled content, documentation indicating percentages by weight of post-consumer and pre-consumer content.

C. Shop Drawings: Show fabrication and installation details for roller shades, including shadeband materials, their orientation to rollers, and their seam and batten locations.

- 1. Motor-Operated Shades: Include details of installation and diagrams for power, signal, and control wiring.

D. Samples for Initial Selection: For each type and color of shadeband material.

- 1. Include Samples of accessories involving color selection.

GRAVELLY HILL MIDDLE SCHOOL MEDIA CENTER RENOVATION
ORANGE COUNTY SCHOOLS

- E. Samples for Verification: For each type of roller shade.
 - 1. Shadeband Material: Not less than 3 inches (76 mm) square. Mark interior face of material if applicable.
 - 2. Roller Shade: Full-size operating unit, not less than 16 inches (400 mm) wide by 36 inches (900 mm) long for each type of roller shade indicated.
 - 3. Installation Accessories: Full-size unit, not less than 10 inches (250 mm) long.
- F. Product Schedule: For roller shades. Use same designations indicated on Drawings.

1.4 INFORMATIONAL SUBMITTALS

- A. Qualification Data: For Installer.
- B. Product Certificates: For each type of shadeband material.
- C. Product Test Reports: For each type of shadeband material, for tests performed by a qualified testing agency.

1.5 CLOSEOUT SUBMITTALS

- A. Operation and Maintenance Data: For roller shades to include in maintenance manuals.

1.6 MAINTENANCE MATERIAL SUBMITTALS

- A. Furnish extra materials that match products installed and that are packaged with protective covering for storage and identified with labels describing contents.
 - 1. Roller Shades: Full-size units equal to 5 percent of quantity installed for each size, color, and shadeband material indicated, but no fewer than two units.

1.7 QUALITY ASSURANCE

- A. Installer Qualifications: Fabricator of products or an entity approved by the fabricator for installation of units required for this Project.

1.8 DELIVERY, STORAGE, AND HANDLING

- A. Deliver roller shades in factory packages, marked with manufacturer, product name, and location of installation using same designations indicated on Drawings.

1.9 FIELD CONDITIONS

- A. Environmental Limitations: Do not install roller shades until construction and finish work in spaces, including painting, is complete and dry and ambient temperature and humidity conditions are maintained at the levels indicated for Project when occupied for its intended use.

GRAVELLY HILL MIDDLE SCHOOL MEDIA CENTER RENOVATION
ORANGE COUNTY SCHOOLS

- B. Field Measurements: Where roller shades are indicated to fit to other construction, verify dimensions of other construction by field measurements before fabrication and indicate measurements on Shop Drawings. Allow clearances for operating hardware of operable glazed units through entire operating range. Notify Architect of installation conditions that vary from Drawings. Coordinate fabrication schedule with construction progress to avoid delaying the Work.

PART 2 - PRODUCTS

2.1 MANUFACTURERS

- A. Source Limitations: Obtain roller shades from single source from single manufacturer.

2.2 MANUALLY OPERATED SHADES WITH SINGLE ROLLERS RS-1

- A. Basis-of-Design Product: Subject to compliance with requirements, provide Hunter Douglas Architectural Window Coverings; Manual RB500 Roller Shade, or a comparable product by one of the following:
 - 1. Am-Source International.
 - 2. BTX Window Automation, Inc.
 - 3. Draper, Inc.
 - 4. Lutron Shading Solutions by VIMCO.
 - 5. MechoShade Systems, Inc.
 - 6. Shade Techniques, Inc.
 - 7. Silent Gliss USA, Inc.
 - 8. SM Automatic, Inc.
 - 9. Sol-R-Veil.
 - 10. Verosol USA, Inc.; OEM Shades, Inc.
- B. Chain-and-Clutch Operating Mechanisms: With continuous-loop bead chain and clutch that stops shade movement when bead chain is released; permanently adjusted and lubricated.
 - 1. Bead Chains: Manufacturer's standard.
 - a. Loop Length: Full length of roller shade.
 - b. Limit Stops: Provide upper and lower ball stops.
 - c. Chain-Retainer Type: Chain tensioner, jamb mounted.
 - 2. Spring Lift-Assist Mechanisms: Manufacturer's standard for balancing roller shade weight and for lifting heavy roller shades.
 - a. Provide for shadebands that weigh more than 10 lb (4.5 kg) or for shades as recommended by manufacturer, whichever criterion is more stringent.
- C. Rollers: Corrosion-resistant steel or extruded-aluminum tubes of diameters and wall thicknesses required to accommodate operating mechanisms and weights and widths of shadebands

GRAVELLY HILL MIDDLE SCHOOL MEDIA CENTER RENOVATION
ORANGE COUNTY SCHOOLS

indicated without deflection. Provide with permanently lubricated drive-end assemblies and idle-end assemblies designed to facilitate removal of shadebands for service.

1. Roller Drive-End Location: Right side of interior face of shade.
 2. Direction of Shadeband Roll: Regular, from back (exterior face) of roller.
 3. Shadeband-to-Roller Attachment: Manufacturer's standard method.
- D. Mounting Hardware: Brackets or endcaps, corrosion resistant and compatible with roller assembly, operating mechanism, installation accessories, and mounting location and conditions indicated.
- E. Roller-Coupling Assemblies: Coordinated with operating mechanism and designed to join up to three inline rollers into a multiband shade that is operated by one roller drive-end assembly.
- F. Shadebands:
1. Shadeband Material: Light-filtering fabric.
 2. Shadeband Bottom (Hem) Bar: Steel or extruded aluminum.
 - a. Type: Enclosed in sealed pocket of shadeband material.
- G. Installation Accessories:
1. Front Fascia: Aluminum extrusion that conceals front and underside of roller and operating mechanism and attaches to roller endcaps without exposed fasteners.
 - a. Shape: L-shaped.
 - b. Height: Manufacturer's standard height required to conceal roller and shadeband assembly when shade is fully open, but not less than 4 inches (102 mm).
 2. Endcap Covers: To cover exposed endcaps.
 3. Closure Panel and Wall Clip: Removable aluminum panel designed for installation at bottom of site-constructed ceiling recess or pocket and for snap-in attachment to wall clip without fasteners.
 4. Installation Accessories Color and Finish: As selected from manufacturer's full range.

2.3 MOTOR-OPERATED, SINGLE-ROLLER SHADES RS-1, **ALTERNATE**

- A. Basis-of-Design Product: Subject to compliance with requirements, provide Hunter Douglas Architectural Window Coverings; Motor-operated RB500 Roller Shade, or a comparable product by one of the following:
1. Am-Source International.
 2. BTX Window Automation, Inc.
 3. Draper, Inc.
 4. Lutron Shading Solutions by VIMCO.
 5. MechoShade Systems, Inc.
 6. Shade Techniques, Inc.
 7. Silent Gliss USA, Inc.
 8. SM Automatic, Inc.
 9. Sol-R-Veil.

GRAVELLY HILL MIDDLE SCHOOL MEDIA CENTER RENOVATION
ORANGE COUNTY SCHOOLS

10. Verosol USA, Inc.; OEM Shades, Inc.
 - B. Motorized Operating Systems: Provide factory-assembled, shade-operator systems of size and capacity and with features, characteristics, and accessories suitable for conditions indicated, complete with electric motor and factory-prewired motor controls, power disconnect switch, enclosures protecting controls and operating parts, and accessories required for reliable operation without malfunction. Include wiring from motor controls to motors. Coordinate operator wiring requirements and electrical characteristics with building electrical system.
 1. Electrical Components: Listed and labeled as defined in NFPA 70, by a qualified testing agency, and marked for intended location and application.
 2. Electric Motor: Manufacturer's standard tubular, enclosed in rollers.
 - a. Electrical Characteristics: 110-V ac (60 Hz) single phase.
 - b. Maximum Total Shade Width: As required to operate roller shades indicated.
 - c. Maximum Shade Drop: As required to operate roller shades indicated.
 - d. Maximum Weight Capacity: As required to operate roller shades indicated.
 3. Remote Control: Electric controls with NEMA ICS 6, Type 1 enclosure for recessed or flush mounting. Provide the following for remote-control activation of shades:
 - a. Individual/Group Control Station: Momentary-contact, three-position, rocker-style, wall-switch-operated control station with open, close, and center off functions for individual and group control.
 - b. Sun Sensor Control: Adjustable system consisting of digital displays detecting sun intensity and responding by automatically adjusting shades.
 - c. Microprocessor Control: Electronic programmable means for setting, changing, and adjusting control features; isolated from voltage spikes and surges.
 - d. Color: As selected by Architect from manufacturer's full range.
 4. Limit Switches: Adjustable switches, interlocked with motor controls and set to stop shade movement automatically at fully raised and fully lowered positions.
 5. Operating Features:
 - a. Group switching with integrated switch control; single faceplate for multiple switch cutouts.
 - b. Capable of interface with audiovisual control system.
 - c. Override switch.
 - C. Rollers: Corrosion-resistant steel or extruded-aluminum tubes of diameters and wall thicknesses required to accommodate operating mechanisms and weights and widths of shadebands indicated without deflection. Provide with permanently lubricated drive-end assemblies and idle-end assemblies designed to facilitate removal of shades for service.
 1. Roller Drive-End Location: Right side of interior face of shade.
 2. Direction of Shadeband Roll: Regular, from back (exterior face) of roller.
 3. Shadeband-to-Roller Attachment: Manufacturer's standard method.
 - D. Mounting Hardware: Brackets or endcaps, corrosion resistant and compatible with roller mounting configuration, roller assemblies, operating mechanisms, installation accessories, and installation locations and conditions indicated.

GRAVELLY HILL MIDDLE SCHOOL MEDIA CENTER RENOVATION
ORANGE COUNTY SCHOOLS

- E. Roller-Coupling Assemblies: Coordinated with operating mechanism and designed to join up to three inline rollers into a multiband shade that is operated by one roller drive-end assembly.
- F. Shadebands:
 - 1. Shadeband Material: Light-filtering fabric.
 - 2. Shadeband Bottom (Hem) Bar: Steel or extruded aluminum.
 - a. Type: Enclosed in sealed pocket of shadeband material.
- G. Installation Accessories:
 - 1. Recessed Shade Pocket: Rectangular, extruded-aluminum enclosure designed for recessed ceiling installation; with front, top, and back formed as one piece, end plates, and removable bottom closure panel.
 - a. Height: Manufacturer's standard height required to enclose roller and shadeband assembly when shade is fully open, but not less than 6 inches (152 mm).
 - b. Provide pocket with lip at lower edge to support acoustical ceiling panel.
 - 2. Closure Panel and Wall Clip: Removable aluminum panel designed for installation at bottom of site-constructed ceiling recesses or pockets and for snap-in attachment to wall clip without fasteners.
 - a. Closure-Panel Width: As indicated on Drawings.
 - 3. Side Channels: With light seals and designed to eliminate light gaps at sides of shades as shades are drawn down. Provide side channels with shadeband guides or other means of aligning shadebands with channels at tops.
 - 4. Bottom (Sill) Channel or Angle: With light seals and designed to eliminate light gaps at bottoms of shades when shades are closed.
 - 5. Installation Accessories Color and Finish: As selected from manufacturer's full range.

2.4 SHADEBAND MATERIALS

- A. Shadeband Material Flame-Resistance Rating: Comply with NFPA 701. Testing by a qualified testing agency. Identify products with appropriate markings of applicable testing agency.
- B. Light-Filtering Fabric: Woven fabric, stain and fade resistant.
 - 1. Source: Roller shade manufacturer.
 - 2. Basis-of-Design Product: GreenScreen Revive HD2505.
 - 3. Type: 100 percent polyester, PVC-free.
 - 4. Thickness: 0.017-inch (0.43 mm).
 - 5. Weight: 5.01 oz./sq. yd. (170 g/sq. m).
 - 6. Roll Width: 118 inches (2997 mm).
 - 7. Orientation on Shadeband: RS-1 & RS-2: Up the bolt; RS-3: Railroaded.
 - 8. Openness Factor: 5 percent.
 - 9. Color: As selected by Architect from manufacturer's full range.

GRAVELLY HILL MIDDLE SCHOOL MEDIA CENTER RENOVATION
ORANGE COUNTY SCHOOLS

2.5 ROLLER SHADE FABRICATION

- A. Product Safety Standard: Fabricate roller shades to comply with WCMA A 100.1, including requirements for flexible, chain-loop devices; lead content of components; and warning labels.
- B. Unit Sizes: Fabricate units in sizes to fill window and other openings as follows, measured at 74 deg F (23 deg C):
 - 1. Between (Inside) Jamb Installation: Width equal to jamb-to-jamb dimension of opening in which shade is installed less 1/4 inch (6 mm) per side or 1/2-inch (13-mm) total, plus or minus 1/8 inch (3.1 mm). Length equal to head-to-sill or -floor dimension of opening in which shade is installed less 1/4 inch (6 mm), plus or minus 1/8 inch (3.1 mm).
 - 2. Outside of Jamb Installation: Width and length as indicated, with terminations between shades of end-to-end installations at centerlines of mullion or other defined vertical separations between openings.
- C. Shadeband Fabrication: Fabricate shadebands without battens or seams to extent possible, except as follows:
 - 1. Vertical Shades: Where width-to-length ratio of shadeband is equal to or greater than 1:4, provide battens and seams at uniform spacings along shadeband length to ensure shadeband tracking and alignment through its full range of movement without distortion of the material.
 - 2. Railroaded Materials: Railroad material where material roll width is less than the required width of shadeband and where indicated. Provide battens and seams as required by railroaded material to produce shadebands with full roll-width panel(s) plus, if required, one partial roll-width panel located at top of shadeband.

PART 3 - EXECUTION

3.1 EXAMINATION

- A. Examine substrates, areas, and conditions, with Installer present, for compliance with requirements for installation tolerances, operational clearances, locations of connections to building electrical system, and other conditions affecting performance of the Work.
- B. Proceed with installation only after unsatisfactory conditions have been corrected.

3.2 ROLLER SHADE INSTALLATION

- A. Install roller shades level, plumb, and aligned with adjacent units according to manufacturer's written instructions.
 - 1. Opaque Shadebands: Located so shadeband is not closer than 2 inches (51 mm) to interior face of glass. Allow clearances for window operation hardware. Retain "Electrical Connections" Paragraph below for motor-operated roller shades.
- B. Electrical Connections: Connect motor-operated roller shades to building electrical system.

GRAVELLY HILL MIDDLE SCHOOL MEDIA CENTER RENOVATION
ORANGE COUNTY SCHOOLS

- C. Roller Shade Locations: As indicated on Drawings.

3.3 ADJUSTING

- A. Adjust and balance roller shades to operate smoothly, easily, safely, and free from binding or malfunction throughout entire operational range.

3.4 CLEANING AND PROTECTION

- A. Clean roller shade surfaces, after installation, according to manufacturer's written instructions.
- B. Provide final protection and maintain conditions, in a manner acceptable to manufacturer and Installer, that ensure that roller shades are without damage or deterioration at time of Substantial Completion.
- C. Replace damaged roller shades that cannot be repaired, in a manner approved by Architect, before time of Substantial Completion.

3.5 DEMONSTRATION

- A. Engage a factory-authorized service representative to train Owner's maintenance personnel to adjust, operate, and maintain motor-operated roller shades.

END OF SECTION 122413

no.	revisions
01	04/01/2026 Addendum 01

The use of these plans and specifications shall be restricted to the original site for which they were prepared and published. Their use for any other project or location is expressly limited to such use. No use, reproduction, or publication by any method, in whole or in part, is prohibited. Title to the plans and specifications remain in the architect without prejudice. It is to be returned upon request to the architect. Visual contact with these plans and specifications shall constitute prima facie evidence of the acceptance of these restrictions.

drawn checked
tbc

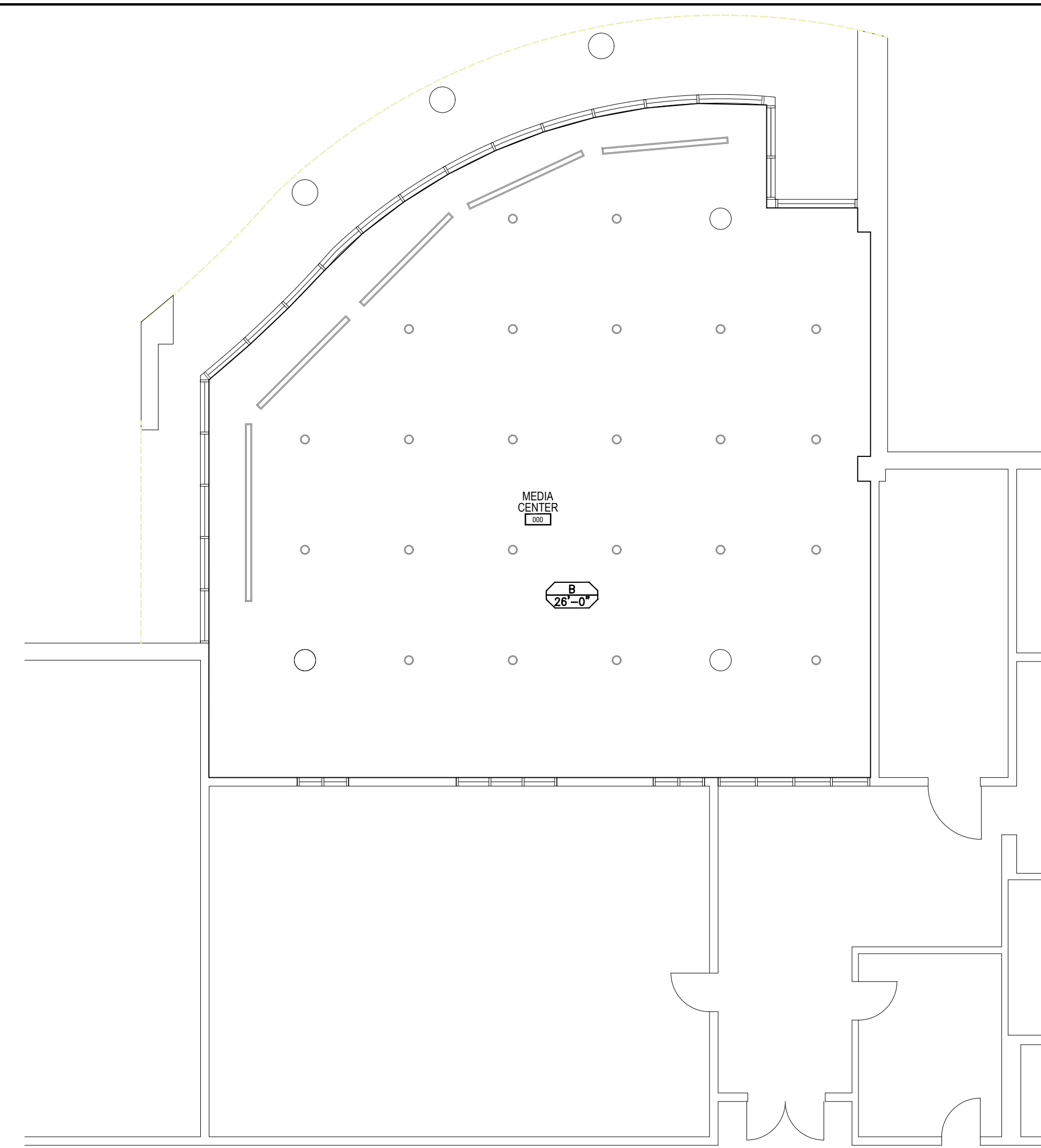
**Plan
Demolition**

sheet

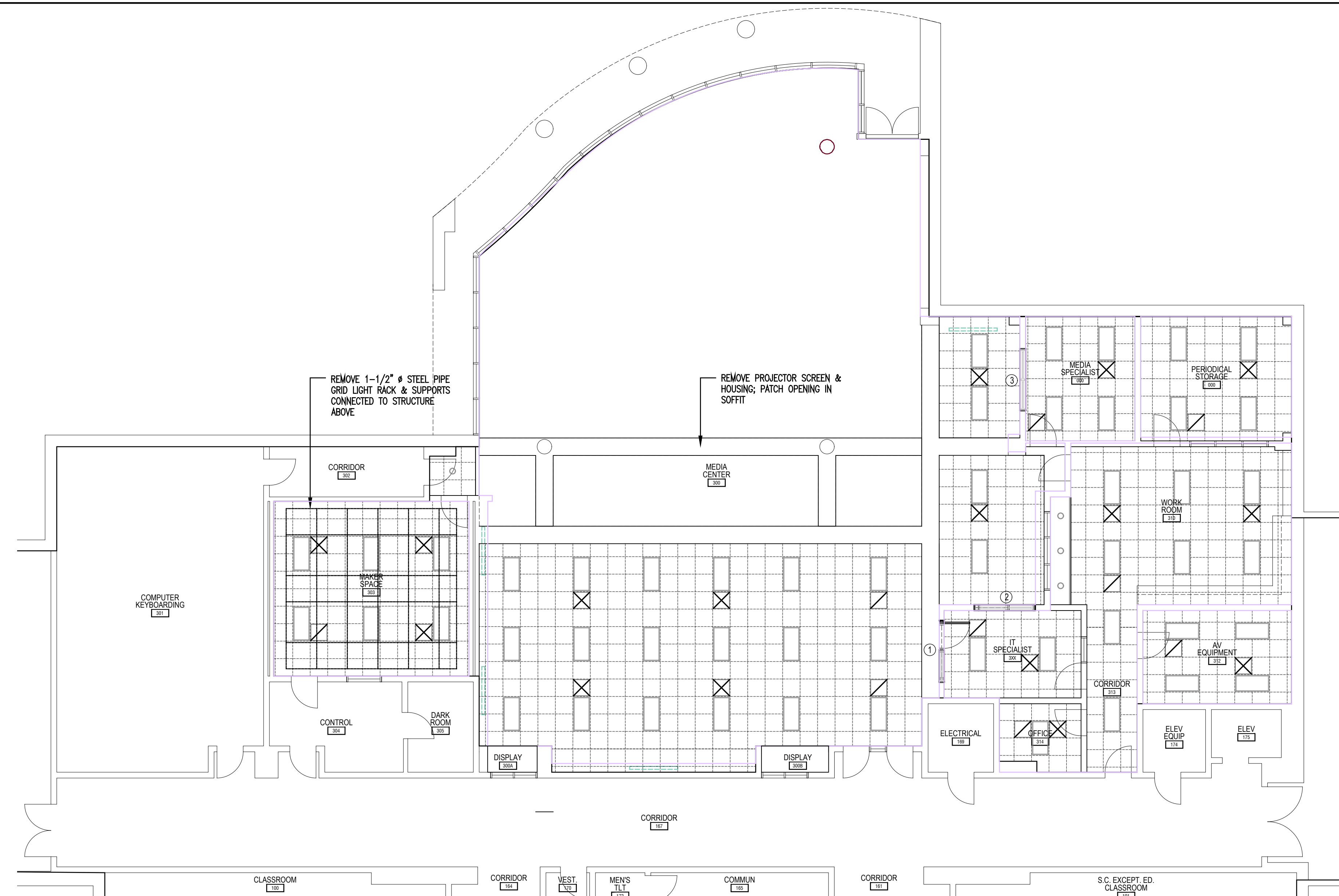
A100

project no. 2601.01

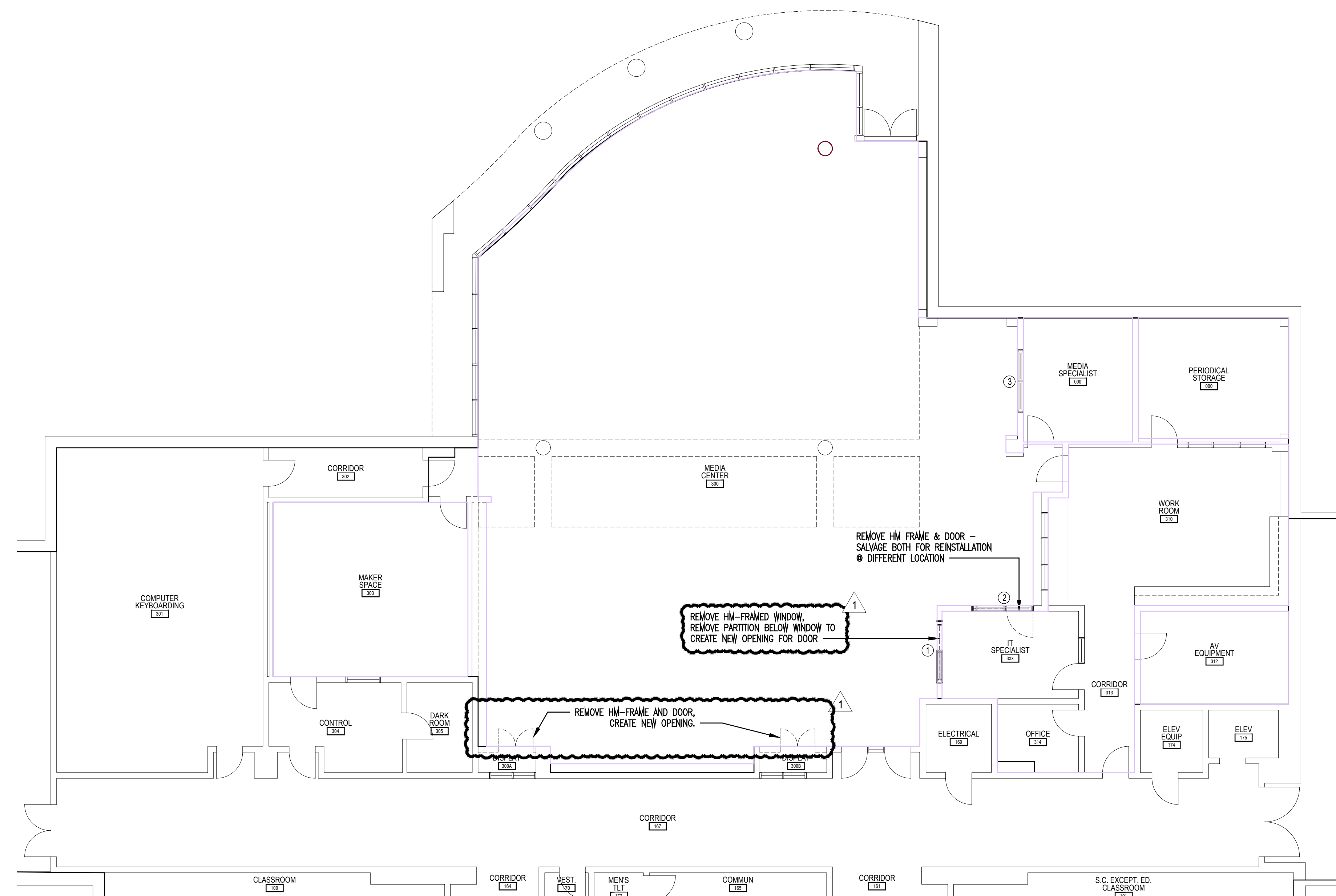
date 03/17/2026



3 REFLECTED CEILING DEMOLITION PLAN - UPPER LEVEL
1/8" = 1'-0"

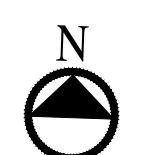


2 REFLECTED CEILING DEMOLITION PLAN - FIRST LEVEL
1/8" = 1'-0"



1 FLOOR DEMOLITION PLAN
1/8" = 1'-0"

KEY PLAN



no.	revisions
01	04/01/2026 Addendum 01

The use of these plans and specifications shall be restricted to the original site for which they were prepared and published. Their use elsewhere is expressly limited to such use. No-use, reproduction, or publication by any method, in whole or in part, is prohibited. Title to the plans and specifications remain in the architect without prejudice. It is to be returned upon request to the architect. Visual contact with these plans and specifications shall constitute prima facie evidence of the acceptance of these restrictions.

drawn _____ checked _____
tbc

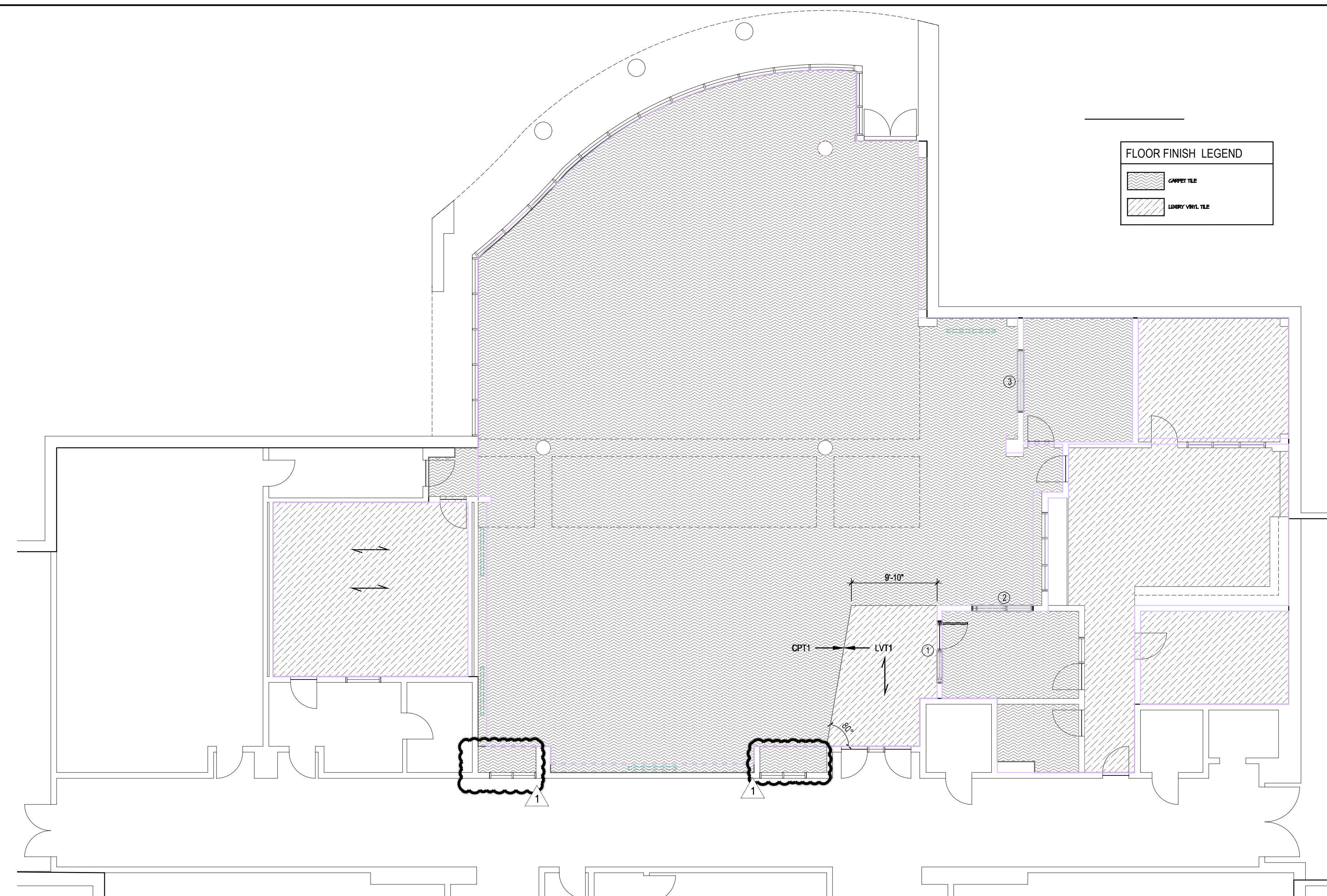
**Floor Plan
First Level**

sheet

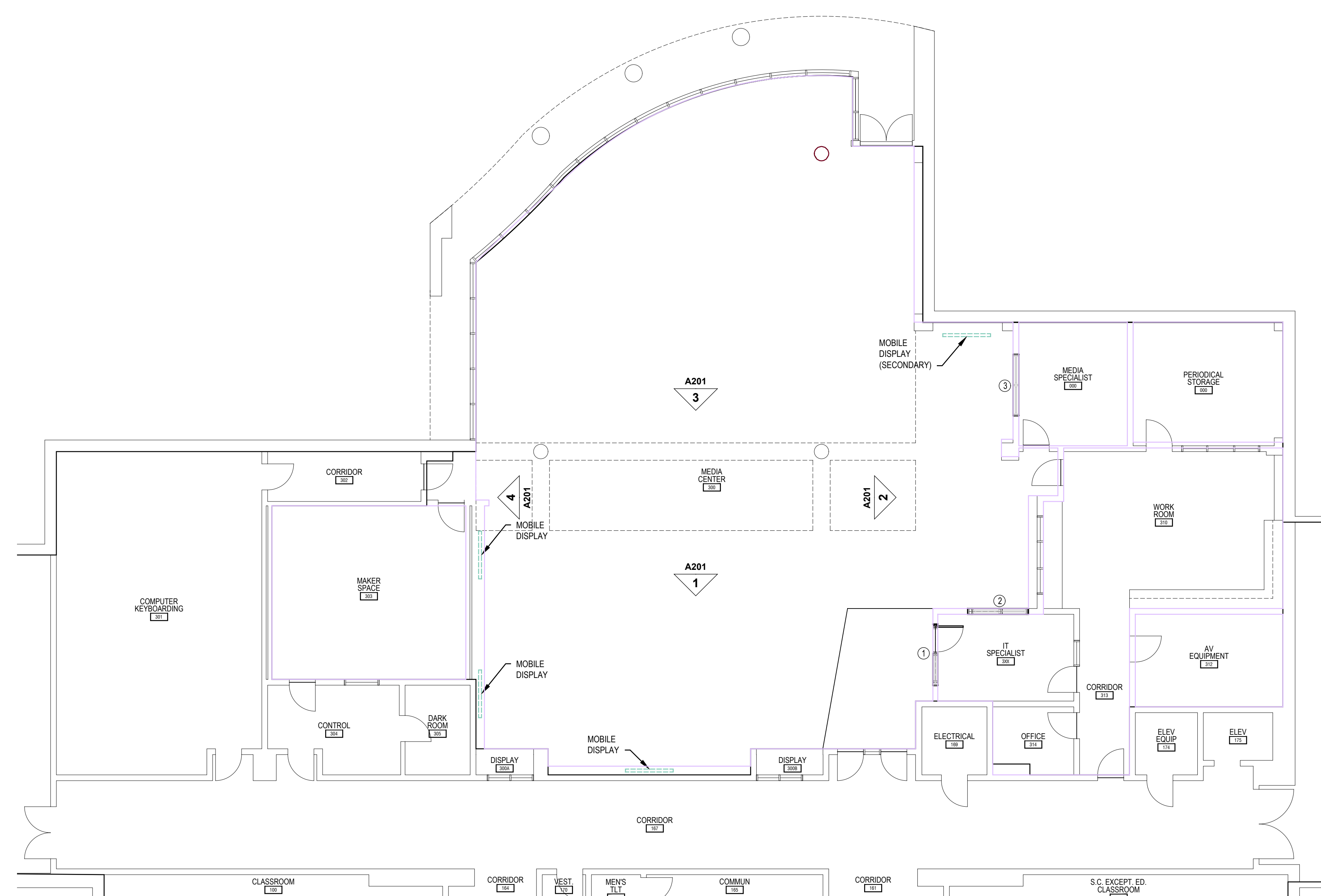
A101

project no. 2601.01

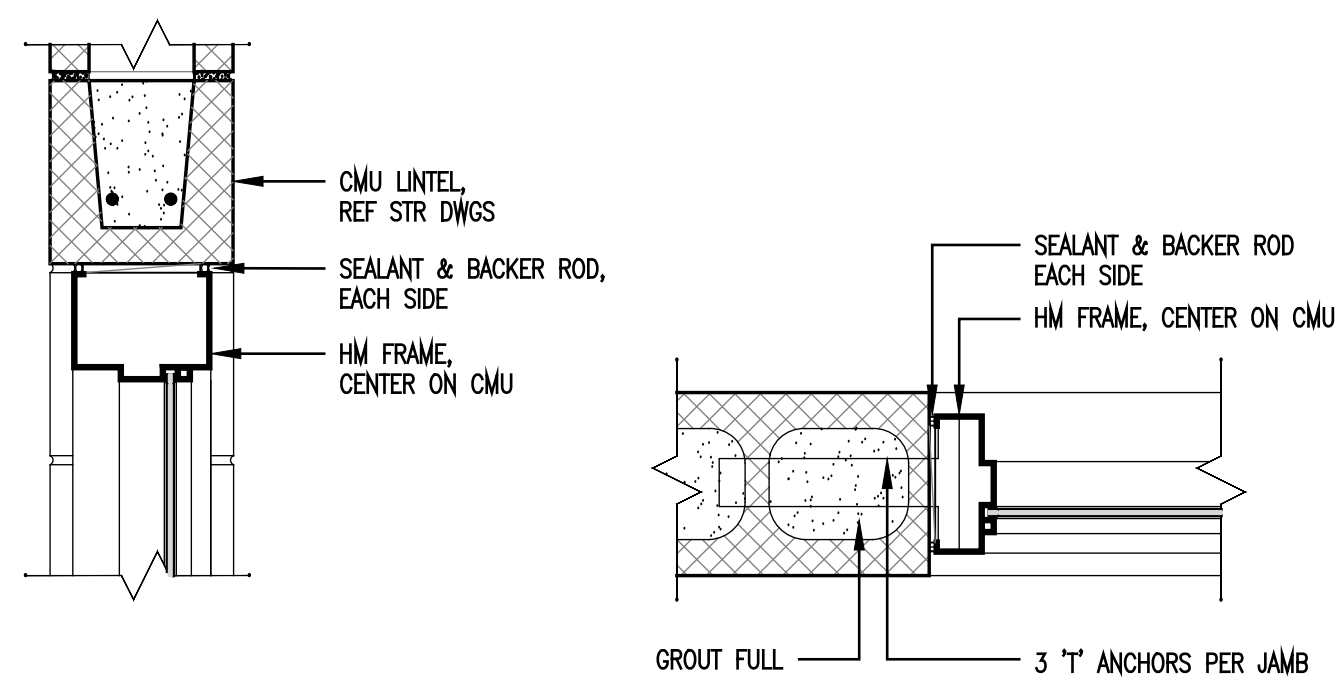
date 03/17/2026



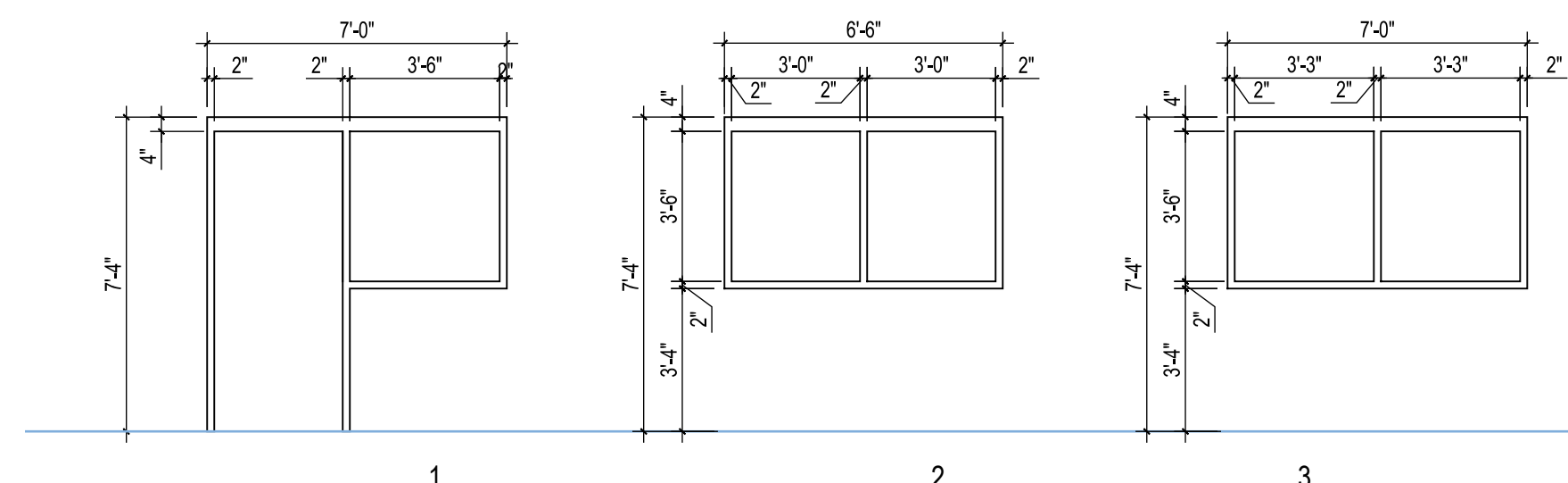
2 FINISH PLAN - FIRST FLOOR
1/8" = 1'-0"



1 PARTIAL FLOOR PLAN - FIRST FLOOR
1/8" = 1'-0"



4 HM FRAME HEAD & JAMB DETAILS
1-1/2" = 1'-0"



NOTE: ALL GLASS IN DOORS & HM FRAMES SHALL BE FULLY TEMPERED FLOAT GLASS (FTG)

3 HM FRAME TYPES
1/4" = 1'-0"

KEY PLAN



no.	revisions
01	04/01/2026 Addendum 01

The use of these plans and specifications shall be restricted to the original site for which they were prepared and published. Their use elsewhere is expressly limited to such use. No reuse, reproduction, or publication by any method, in whole or in part, is prohibited. Title to the plans and specifications remains in the architect without prejudice. It is to be returned upon request to the architect. Visual contact with these plans and specifications shall constitute prima facie evidence of the acceptance of these restrictions.

drawn checked
tbc

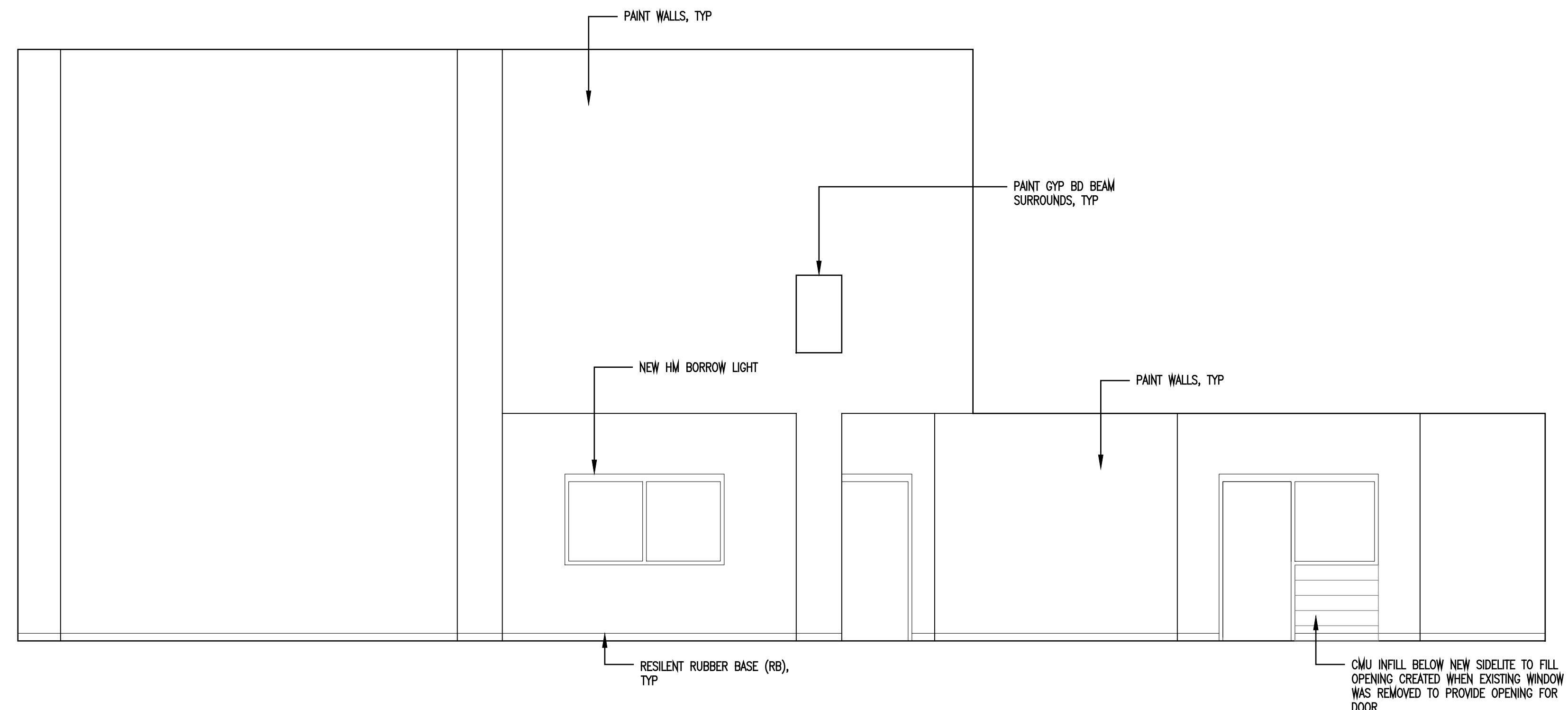
Interior Elevations

sheet

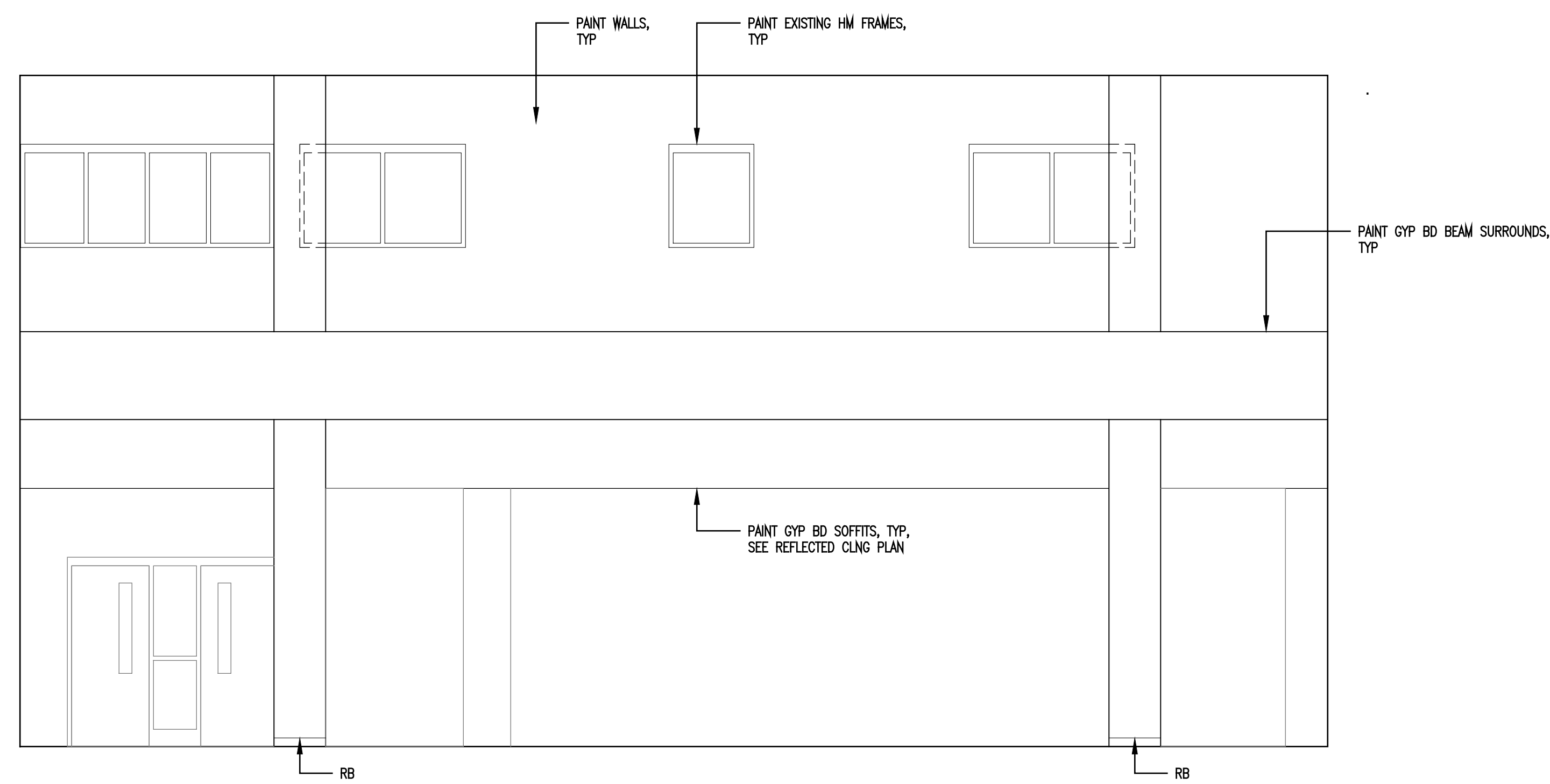
A201

project no. 2601.01

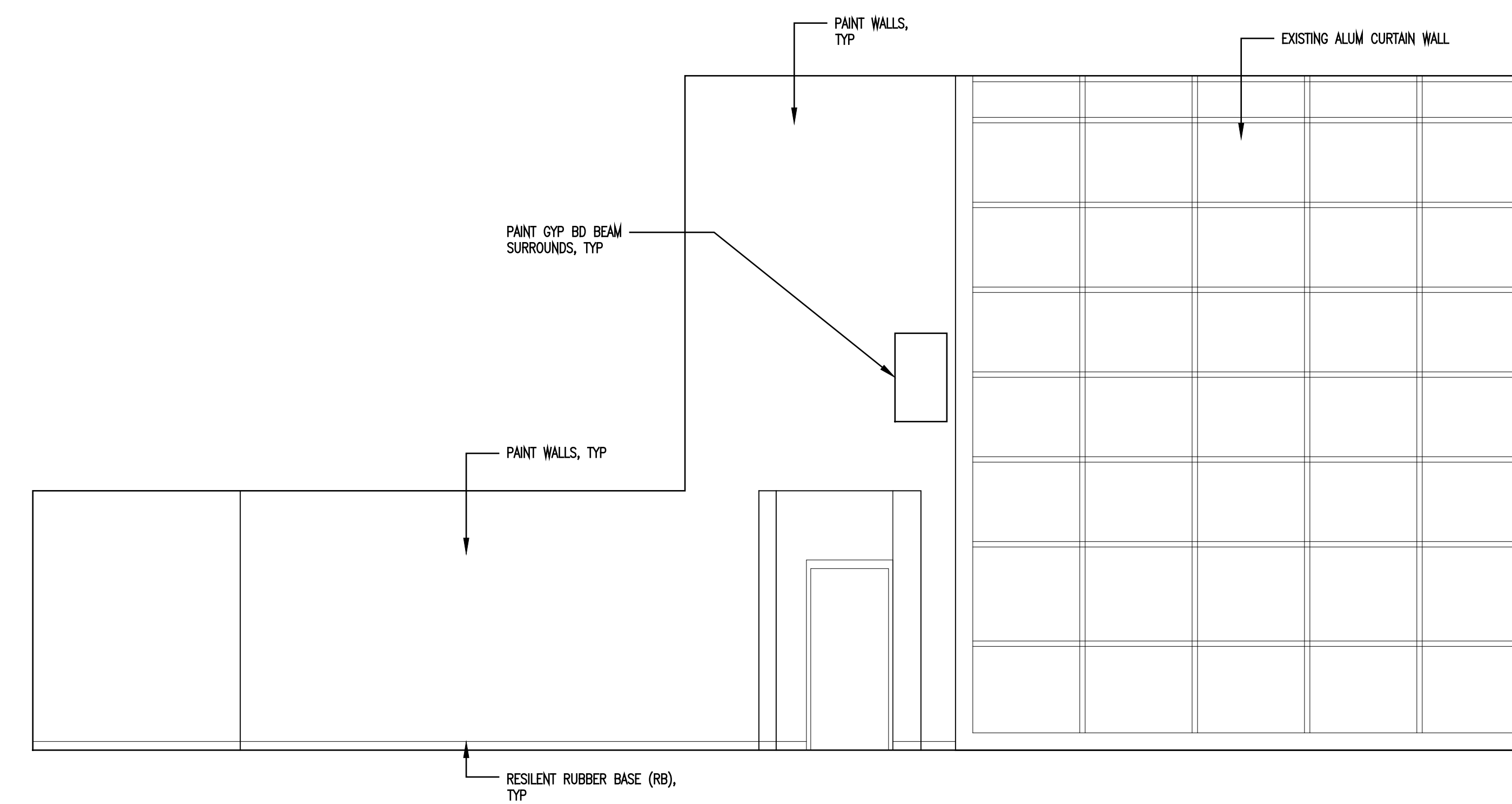
date 03/17/2026



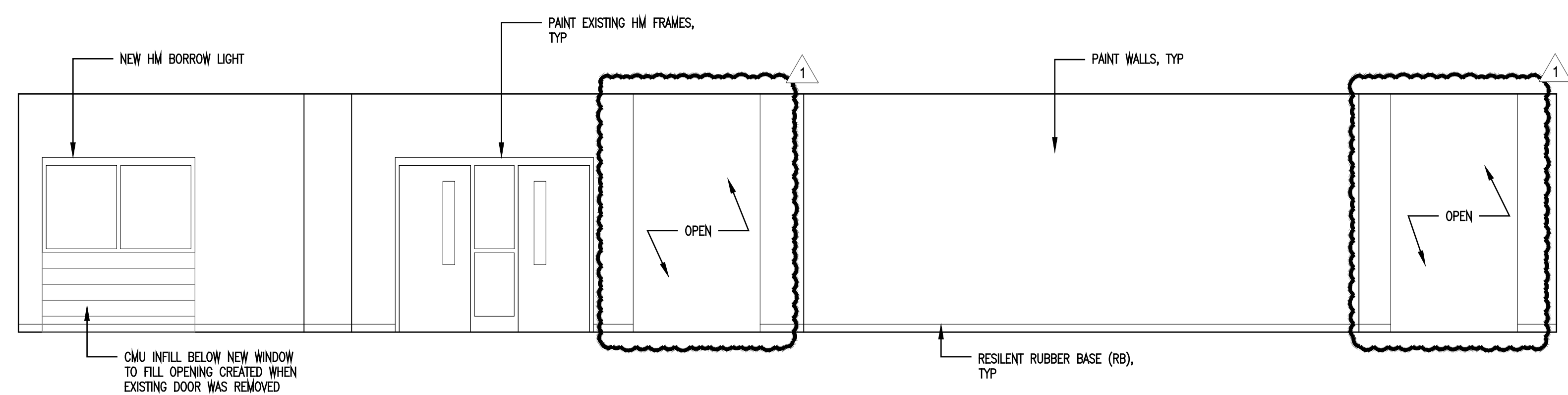
4 INTERIOR ELEVATION
1/4" = 1'-0"



3 INTERIOR ELEVATION
1/4" = 1'-0"



2 INTERIOR ELEVATION
1/4" = 1'-0"



1 INTERIOR ELEVATION
1/4" = 1'-0"

KEY PLAN

