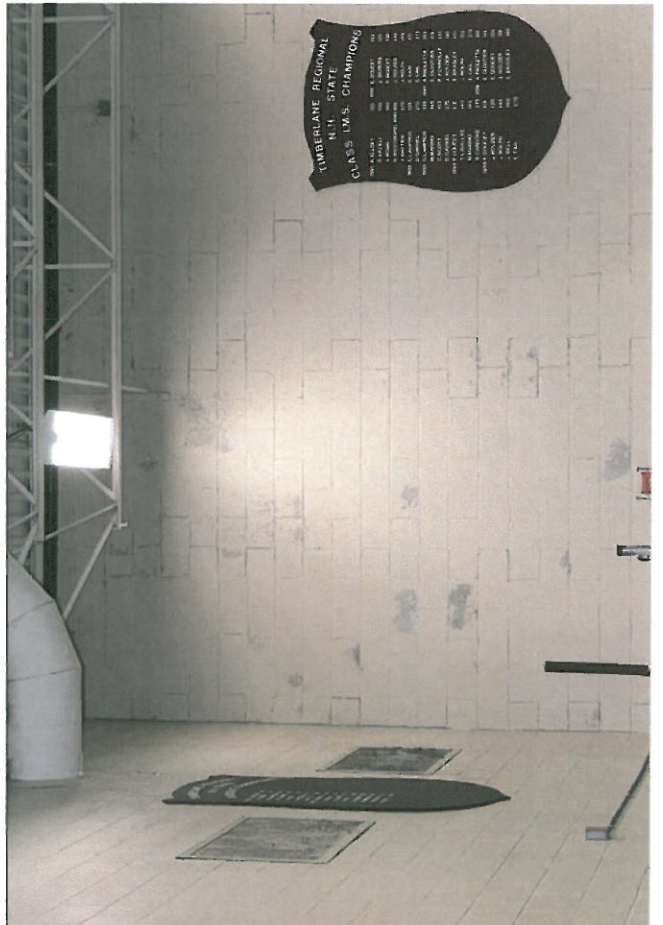
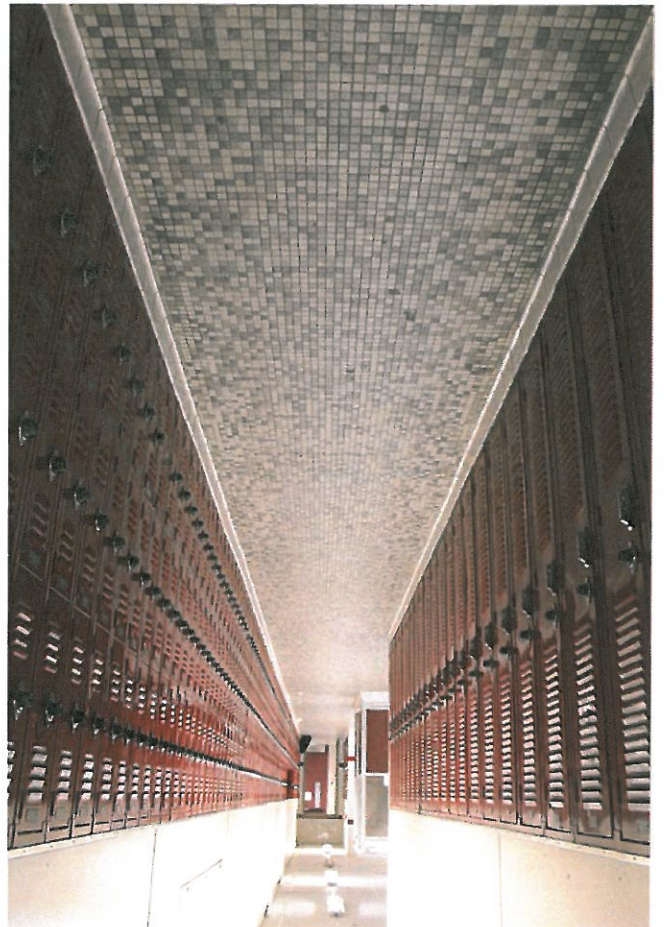


Timberlane Regional High School
Athletics Areas Renovation / Reconstruction

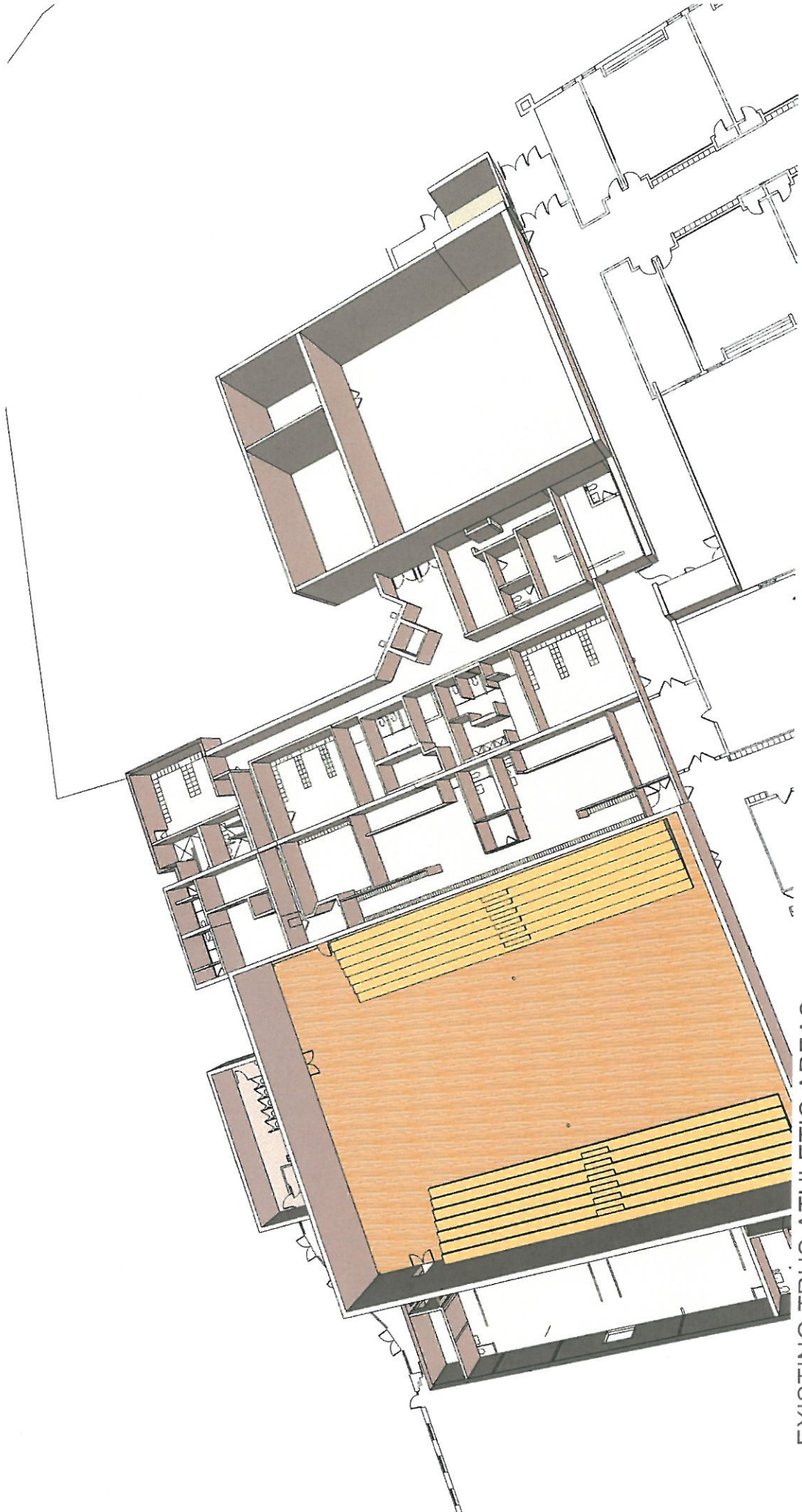
- Existing Conditions Assessment
 - Lacks Accessibility
 - Lacks Equality
 - Lacks Structural Integrity
 - Found in disrepair
 - Lacks Functionality
- Proposed Improvements
- Costs of Proposed Improvements
- Funding Options
- Schedule Options



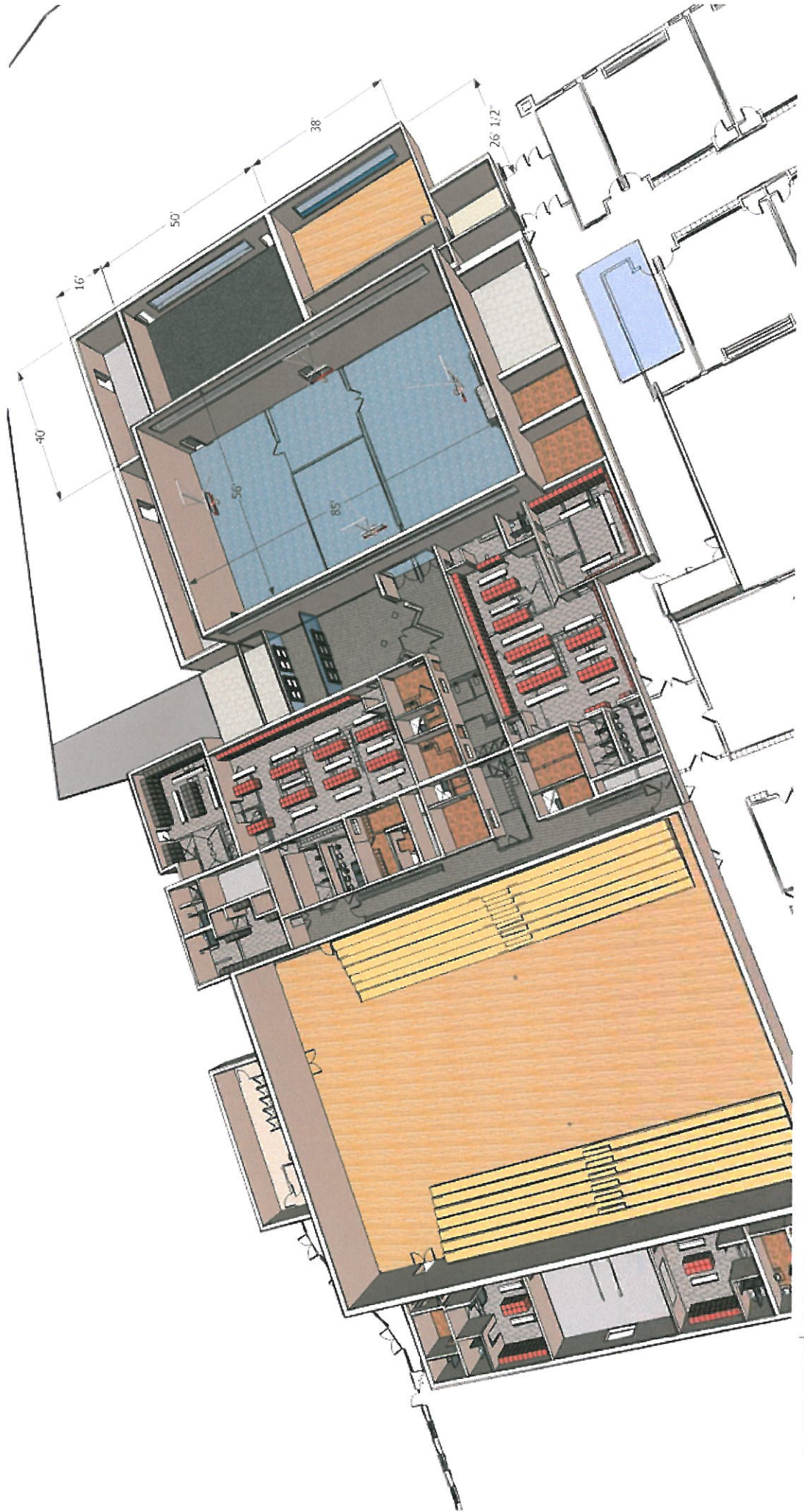




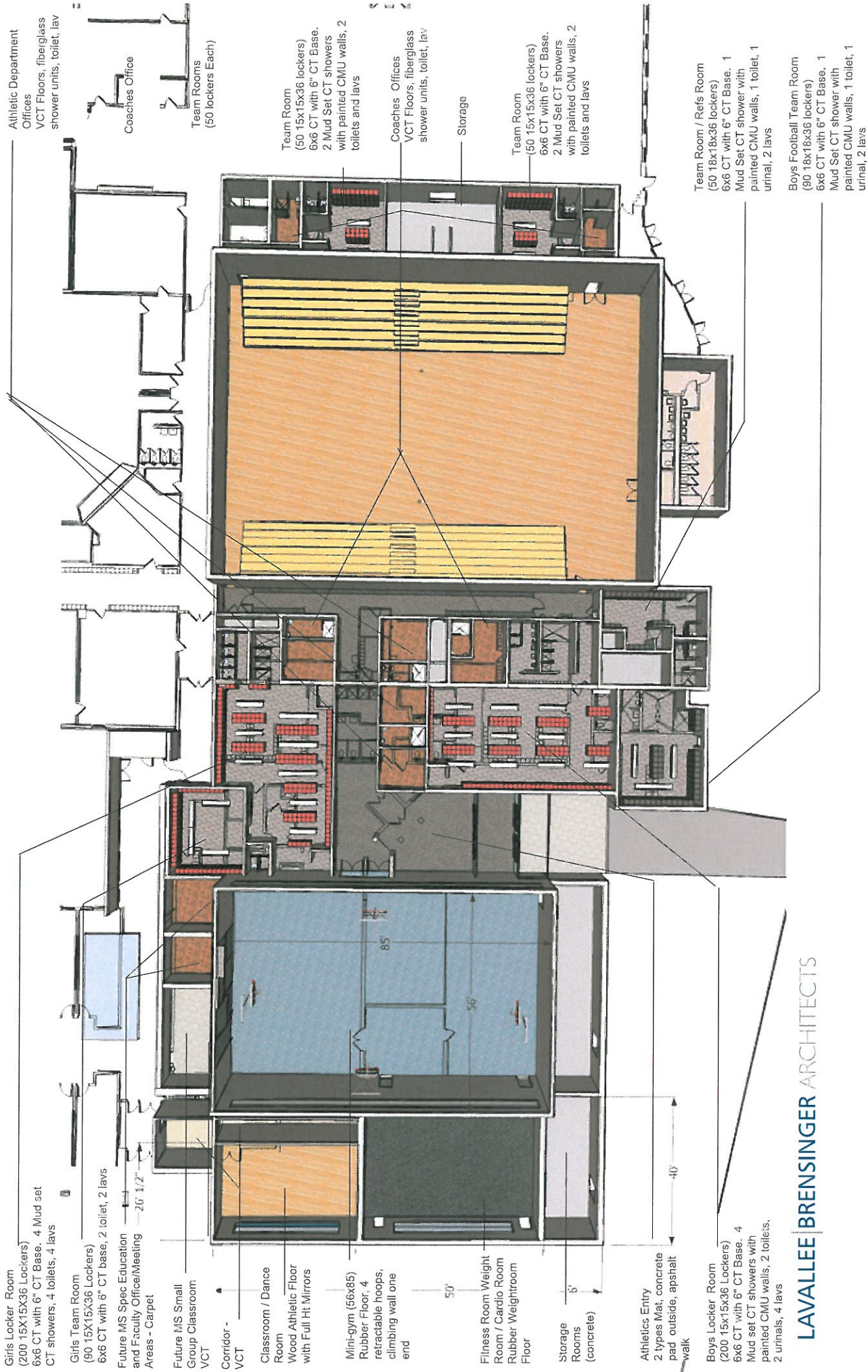




EXISTING TRHS ATHLETIC AREAS



LAVALLEE | BRENSINGER ARCHITECTS



Girls Locker Room
(200 15x15x36 Lockers)
6x6 CT with 6" CT Base, 4 Mud set
CT showers, 4 toilets, 4 lavs

Girls Team Room
(90 15x15x36 Lockers)
6x6 CT with 6" CT base, 2 toilet, 2 lavs

Future MS Spec Education
and Faculty Office/Meeting
Areas - Carpet

Future MS Small
Group Classroom
VCT

Corridor -
VCT

Classroom / Dance
Room
Wood Athletic Floor
with Full Ht Mirrors

Mini-gym (66x85)
Rubber Floor, 4
retractable hoops,
climbing wall one
end

Fitness Room Weight
Room / Cardio Room
Rubber Weightroom
Floor

Storage
Rooms
(concrete)

Athletics Entry
2 types Mat, concrete
pad outside, asphalt
walk

Boys Locker Room
(200 15x15x36 Lockers)
6x6 CT with 6" CT Base, 4
Mud set CT showers with
painted CMU walls, 2 toilets,
2 urinals, 4 lavs

Athletic Department
Offices
VCT Floors, fiberglass
shower units, toilet, lav

Coaches Office

Team Rooms
(50 lockers Each)

Team Room
(50 15x15x36 lockers)
6x6 CT with 6" CT Base,
2 Mud Set CT showers
with painted CMU walls, 2
toilets and lavs

Coaches Offices
VCT Floors, fiberglass
shower units, toilet, lav

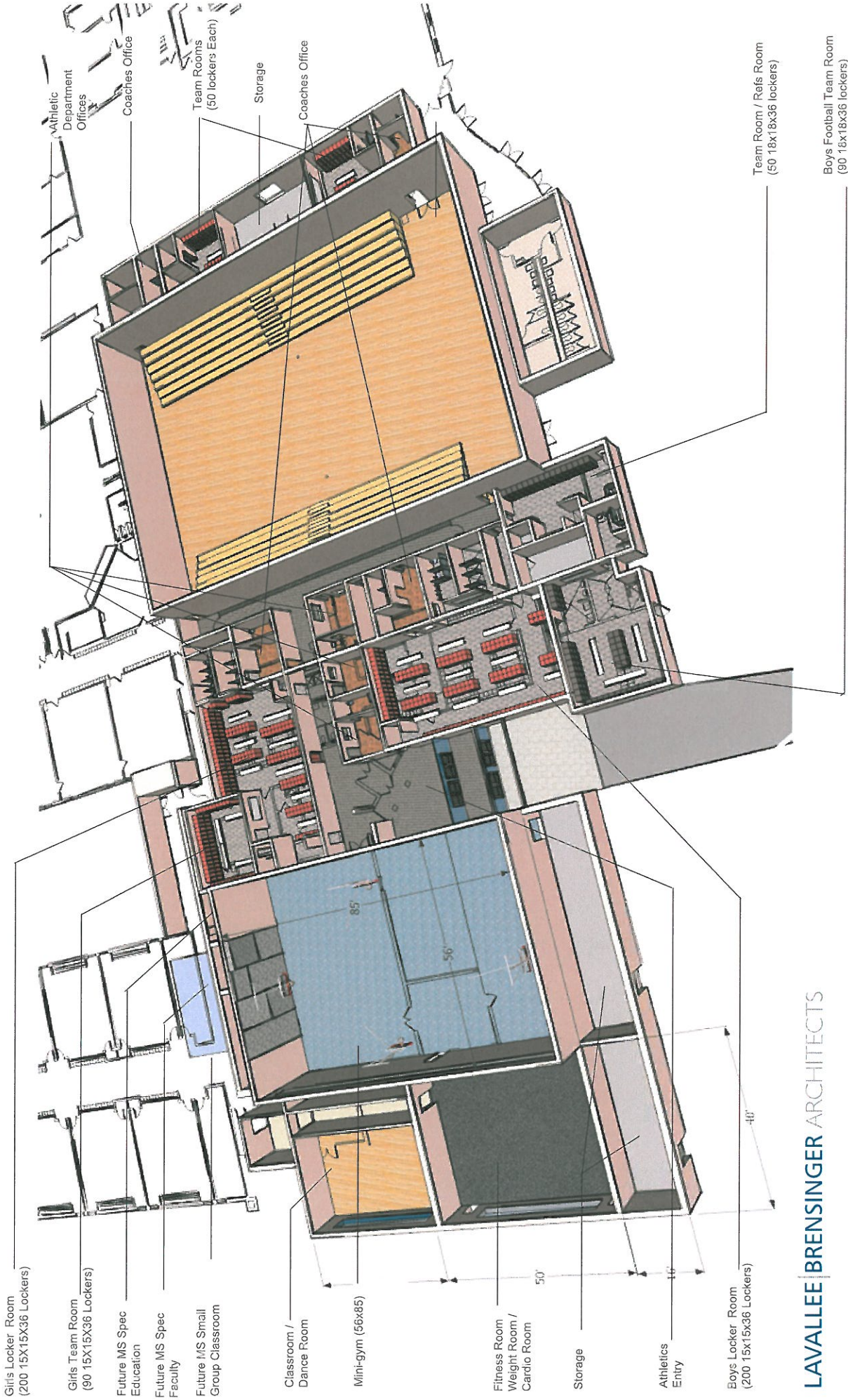
Storage

Team Room
(50 15x15x36 lockers)
6x6 CT with 6" CT Base,
2 Mud Set CT showers
with painted CMU walls, 2
toilets and lavs

Team Room / Refs Room
(50 18x18x36 lockers)
6x6 CT with 6" CT Base, 1
Mud Set CT shower with
painted CMU walls, 1 toilet, 1
urinal, 2 lavs

Boys Football Team Room
(90 18x18x36 lockers)
6x6 CT with 6" CT Base, 1
Mud Set CT shower with
painted CMU walls, 1 toilet, 1
urinal, 2 lavs

LAVALLEE BRENSINGER ARCHITECTS



Girls Locker Room
(200 15x15x36 Lockers)

Girls Team Room
(90 15x15x36 Lockers)

Future MS Spec
Education

Future MS Spec
Faculty

Future MS Small
Group Classroom

Classroom /
Dance Room

Mini-gym (66x85)

Fitness Room
Weight Room /
Cardio Room

Storage

Athletics
Entry

Boys Locker Room
(200 15x15x36 Lockers)

Athletic
Department
Offices

Coaches Office

Team Rooms
(50 lockers Each)

Storage

Coaches Office

Team Room / Refs Room
(50 18x18x36 lockers)

Boys Football Team Room
(90 15x18x36 lockers)

LAVALLEE | BRENSINGER ARCHITECTS

Timberlane High School
Athletic Areas Improvements

Overall Project Costs Summary

Division	Trade	Quantity	Units	Cost/Unit	Total Cost	Notes
01	Construction Budget				\$4,006,967.00	Based on Construction Managers Budget
11	Fixed Athletic Equipment				\$0.00	Included in Construction Budget
11	Free Furnishings ands Equipment				\$30,000.00	Separate Budget by District-to be verified. Furniture, CPU equipment, mats, etc.
Total Hard Cost Budget						\$4,036,967.00
	Owner's Contingency				\$100,000.00	Construction Contingency Included in Construction Managers Budget
	Arch/Engineering Fees				\$360,627.03	Estimated Fee - To be negotiated directly with district. Includes Architectural, Mechanical / Plumbing Engineer, Electrical Engineer, Fire Protection, Structural Engineer, and Interior Design.
	CM Fee				\$0.00	Included in Construction Managers Budget
Total District Expenditures						\$4,497,594.03

Order of Magnitude

Timberlane Regional School District

PE / Athletic Area Renovation

Funding Options

One Year Funding

Full amount funded in one year through routine tax process.

Atkinson	1,445,274
Danville	602,982
Plaistow	1,547,842
Sandown	<u>903,902</u>
Total	4,500,000

Five Year Bond

Funding through five year bond at estimated 3.5% interest.

	Year 1 SY 2013 (interest only)	Year 2 SY 2014 (highest year)	Year 3 SY 2015	Year 4 SY 2016	Year 5 SY 2017	Year 6 SY 2018
Atkinson	28,805	334,581	324,464	314,347	304,230	294,113
Danville	12,018	139,590	135,369	131,149	126,928	122,707
Plaistow	30,849	358,326	347,491	336,656	325,821	314,986
Sandown	18,015	209,253	202,926	196,599	190,271	183,944
Total	<u>89,687</u>	<u>1,041,750</u>	<u>1,010,250</u>	<u>978,751</u>	<u>947,250</u>	<u>915,750</u>
					Total	4,983,438

Ten Year Bond

Funding through ten year bond at estimated 4.0% interest.

	Year 1 SY 2013 (interest only)	Year 2 SY 2014 (highest year)	Year 11 SY 2023 (last year)
Atkinson	32,920	199,448	147,418
Danville	13,735	83,212	61,504
Plaistow	35,256	213,602	157,880
Sandown	20,589	124,738	92,198
Total	<u>102,500</u>	<u>621,000</u>	<u>459,000</u>
		Total	5,502,500