

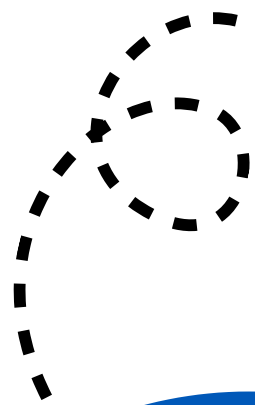
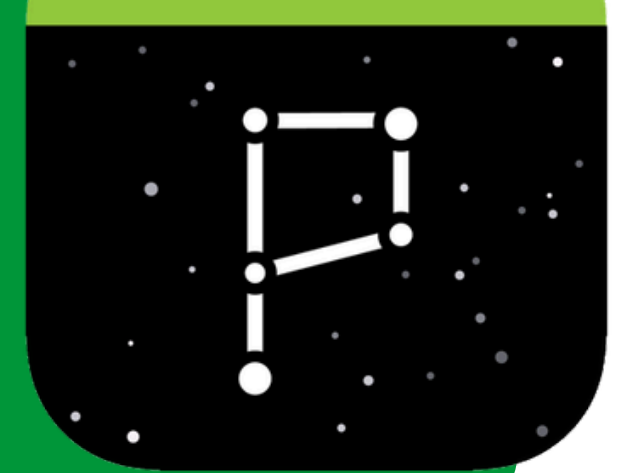
PRESCHOOL registration

2026-2027

PARENT PORTAL

If you haven't set up your parent portal yet, please email marss@isd2135.org to get your activation key.


CAMPUS

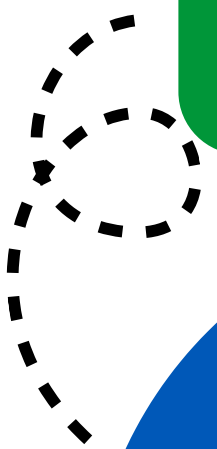
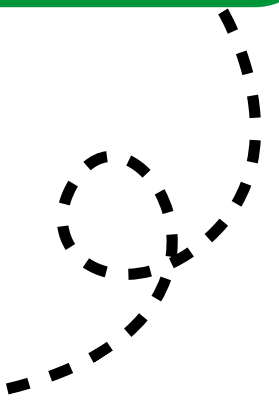


SCHOOL STORE

In your Parent Portal click  and go to **School Store**. Preschool registration is located under **Community Ed**.

REGISTER FOR PRESCHOOL

Select your class. Choose your student from the drop-down. Then add to cart. When you are ready, click  and check out.



WATCH FOR 2026-2027 SCHOOL YEAR INFORMATION

Please make sure you have up-to-date contact information in your parent portal. We will send out communications via email, mail, Facebook, and the Maple River App.

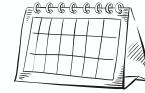


Preschool



Registration

To register, please visit the Community Ed section of the Parent Portal School Store. There is a non-refundable registration fee of \$35.



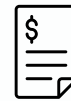
Schedule

Preschool will line up closely with the school calendar. Check out the posted calendar.



Snack


Snacks and milk/juice are included!




Billing

Enrollment in our Preschool Program is for the full academic year, from September through May. Tuition is billed on a bi-weekly basis during this period through the program Procure. Please note that tuition payments are required for the entire duration of the school year, even if you choose to withdraw your child before the end of the year. Your invoice will be generated every Monday and payment will be due on the following Sunday. To make things easier for you, an automated payment through Procure will be set up for the due date.

For more info:

 www.isd2135.k12.mn.us

 507-524-3918

 marss@isd2135.org



2026-2027

Preschool Classes

Preschool Classes

\$35 Registration fee

NON-REFUNDABLE

Classes are filled on a first-come, first-served basis, so register early.

Scholarships are available on request, but are limited.

Before enrolling your child in preschool, we kindly ask that they have completed potty training to ensure a positive experience for both your child and their classmates.

FLYING EAGLES

This class is for children who are Age 4 by Sept. 1 or older and entering kindergarten in the fall of 2027.

M W F 8:30a - 2:30p

\$135.00 BI-WEEKLY
(LUNCH, SNACK AND MILK INCLUDED)

I acknowledge that enrollment in the preschool program is for the full academic year (Sept. - May). I agree to pay bi-weekly tuition throughout this period, even if I choose to withdraw my child before the end of the school year.

JUNIOR EAGLES

This class is for children who are Age 3 by Sept. 1 or older and entering kindergarten in the fall of 2027 or 2028.

T H 8:30a - 2:30p

\$97.00 BI-WEEKLY
(LUNCH, SNACK AND MILK INCLUDED)

I acknowledge that enrollment in the preschool program is for the full academic year (Sept. - May). I agree to pay bi-weekly tuition throughout this period, even if I choose to withdraw my child before the end of the school year.

Maple River Calendar 26-27

Preschool

		August 2026							January 2027							
		S	M	T	W	Th	F	S	S	M	T	W	Th	F	S	
								1							1	2
1	27/28 Orientation Nights	2	3	4	5	6	7	8	11	3	4	5	6	7	8	9
0	31 1st day of class for M/W/F	9	10	11	12	13	14	15	18: No School Screening Day	10	11	12	13	14	15	16
		16	17	18	19	20	21	22		17	18	19	20	21	22	23
		23	24	25	26	27	28	29		24	25	26	27	28	29	30
		30	31							31						

		September 2026							February 2027							
		S	M	T	W	Th	F	S	S	M	T	W	Th	F	S	
11				1	2	3	4	5	11		1	2	3	4	5	6
9	1: 1st day for T/Th Class	6	7	8	9	10	11	12	8	7	8	9	10	11	12	13
	4th: No Class	13	14	15	16	17	18	19	15: No School	14	15	16	17	18	19	20
	7th: No Class-Holiday	20	21	22	23	24	25	26	22: 2hr Late Start	21	22	23	24	25	26	27
	21: 2 Hr Late	27	28	29	30					28						

		October 2026							March 2027							
		S	M	T	W	Th	F	S	S	M	T	W	Th	F	S	
11						1	2	3	10		1	2	3	4	5	6
8	15: No School	4	5	6	7	8	9	10	9	7	8	9	10	11	12	13
	16: No School	11	12	13	14	15	16	17	8: Screening Day - No School	14	15	16	17	18	19	20
	19: Screening Day No School	18	19	20	21	22	23	24	11: Conferences	21	22	23	24	25	26	27
		25	26	27	28	29	30	31	16: Conferences	28	29	30	31			
									16: 2hr EARLY OUT							
									26: No School							
									29: No School							

		November 2026							April 2027							
		S	M	T	W	Th	F	S	S	M	T	W	Th	F	S	
10		1	2	3	4	5	6	7	13					1	2	3
7	25: No School	8	9	10	11	12	13	14	9	4	5	6	7	8	9	10
	26: No School	15	16	17	18	19	20	21		11	12	13	14	15	16	17
	27: No School	22	23	24	25	26	27	28	19: 2hr Late Start	18	19	20	21	22	23	24
	30: No School	29	30							25	26	27	28	29	30	

		December 2026							May 2027							
		S	M	T	W	Th	F	S	S	M	T	W	Th	F	S	
9				1	2	3	4	5	11							1
7	1: Two Hr Early Out	6	7	8	9	10	11	12	8	2	3	4	5	6	7	8
	23-31: No School	13	14	15	16	17	18	19	26/27 Last Day of Presch	9	10	11	12	13	14	15
		20	21	22	23	24	25	26		16	17	18	19	20	21	22
		27	28	29	30	31				23	24	25	26	27	28	29
										30	31					

26-27 Key

No Preschool	
Flying Eagles	98 Days
Junior Eagles	73 Days