



**SANDY SPRINGS
CHARTER
MIDDLE SCHOOL**

**RISING 6TH GRADE
PARENT
INFORMATIONAL**

SPRING 2026

Administrative Team

Ms. Stephanie Hosley
6th & 7th Grades
Assistant Principal

Dr. Amy Watson
7th & 8th Grades
Assistant Principal

Mrs. Laurie Woodruff
Principal

Rosalyn Nolen, MTSS

Vivian Hubby, Counselor

Cindy Fernandez, Counselor

Counseling and Support Team

Program Overview

 PTO

 6th Grade Day

 Course Placement

 Programs

 Extracurricular

 Counseling Department

 Q&A

 Student Tours



The 6th Grade Day

- Arrival, breakfast, and lockers!
- Class time
 - 8 classes per day (including FOCUS)
 - 50-minute classes
 - 4 core classes (Math, Science, English/Language, Arts and Social Studies)
 - Reading or Foreign Language Class
 - 2 Connections Classes
- Students eat lunch with their 4th period class
- Our current schedule has academic classes in the morning and connections in the afternoon
- All teachers hold a help session once a week either before or after school so students can get extra help as needed.



Curriculum Offerings

Mathematics

- Math 6 On level or TAG – (6.1/6.2)
- Math 6 Enhanced – (6.1/6.2 and a few 7th standards)
- Accelerated (Year-ahead) – Completed 6.1/6.2, 6.1 average $\geq 90\%$, Milestone Level 3 or 4

Curriculum Offerings

English Language Arts

- On level - Completed 5.1/5.2
- TAG/ADV- Completed 5.1/5.2
Milestones Lv. 3 or 4, TR
- ACCL- Completed 6.1/6.2, Milestones
Lv. 3 or 4 and TR



Curriculum Offerings

Reading and World Languages

- Reading On level, *below grade level*
- World Language Spanish, *at or above grade level*
- World Language French, *at or above grade level*



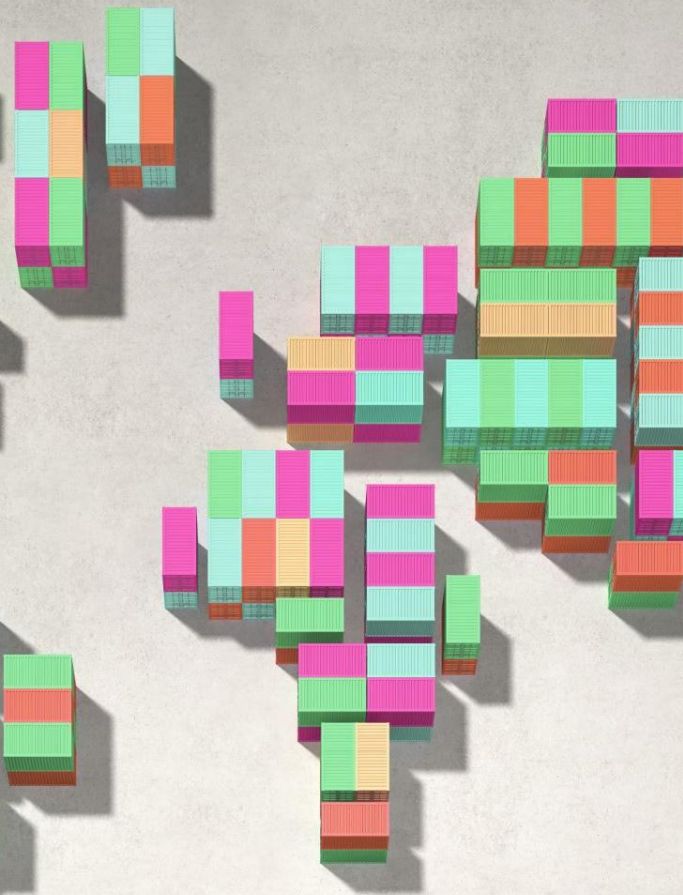
Curriculum Offerings

Earth Science

- On level
- TAG/Advanced - Semester 1 average >90%, Stanford 10 >90%tile, Teacher Recommendation

Social Studies

- On level
- TAG/Advanced -Semester 1 average >90%; Stanford 10 >90%tile, Teacher Recommendation



TAG TESTING

- The TAG program extends the Middle School Curriculum and takes into consideration the academic, social, and emotional growth of talented and gifted students. Students are tested to qualify for the TAG program.

- **Automatic Referral Process (August/September)**

- Standardized Tests: Students must have a minimum of an 85th percentile and a 90th percentile in two of the three areas on a standardized, nationally norm-referenced assessment

- **CISS Process (January-May)**

- Teachers screen and recommend students based on observations using the Characteristics Instrument for Screening Students (CISS) to identify students with superior abilities in five or more of the following areas: ***motivation, interests, communications skills, problem-solving abilities, memory, inquiry, insight, reasoning, creativity, and humor***



ESOL Programming



The ELL program is a standards-based instructional program that supports students whose **first language is not English**.



ESOL students usually receive two segments of ESOL support; Language Acquisition and Language Arts in the Sheltered Model



Math, Science, and Social Studies Push-in classes



Scheduled by grade -level



ACCESS Testing as well as Milestones

Services for Exceptional Children

Special Education Settings in Middle School:

Small Group
SEC students with one teacher

Team Taught/Collaborative-
SEC and GE students with two certified teachers

Consultative
SEC receive services in the GE setting. This may include TAG as well.

MID/MOID/AU
SEC students with one teacher and support paraprofessional



HEALTH



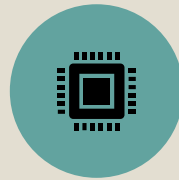
PE



ART



GENERAL
MUSIC



COMPUTER
SCIENCE



CAREER
AWARENESS



AUDIO/VISUAL
BROADCAST

9-Week Connections Courses

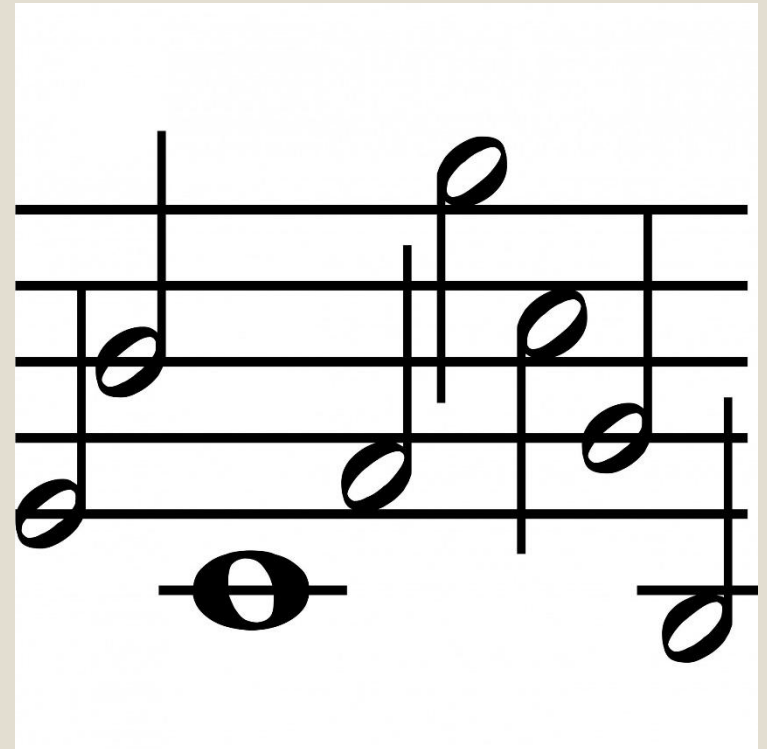
Band, Chorus, and Orchestra

Year-long elective course

Open to all 6th, 7th, & 8th
students

Students do not need any
prior experience to
participate

SSCMS Music Department



SSCMS Music Department

Band, Mr. Melvin Miller:
millerm8@fultonschools.org

Chorus, Ms. RoBeryle Hudley:
hudleyr@fultonschools.org

Orchestra, Mr. Lenin Pena:
pena@fultonschools.org

Music Performances...

- Fall, Winter and Springs Concerts
- All State Athens GA
- MS Honor Orchestra, Band and Chorus
- Band and Orchestra Out of State field trip
- Awards Ceremonies
- Large Group Performance Evaluation (LGPE)
- Special Events (Within & Outside School)



6th Grade **AVID**



AVID students participate in a rigorous academic curriculum and receive tutoring, grow leadership skills, learn strategies for organization and time management.

They explore colleges through research and campus visits and engage in family nights to educate and inform parents.

Ms. Hill, AVID Coordinator

hillpm@fultonschools.org



Intramurals

Intramurals are an extension of the Physical Education program. Programs are meant to be non-competitive in nature and provide a variety of life-long engaging activities for all students. A parent consent form is required. Tryouts are not necessary.

Monday-Thursday starting at 7:30AM in the gym



Sports

- **Soccer***
- **Volleyball**
- Tennis
- Gymnastics
- Basketball
- Track & Field
- **Softball**
- **Baseball**
- **Cross-Country**
- **Cheerleading**
- **Golf**



ASAS

- After school program from 4:15-5:45
- Free of charge for SSCMS families
- Activities, clubs, academic tutoring, field trips, and more!



SSCMS Counseling

- Our comprehensive school program consists of the following components 1) academic, 2) social/emotional, and 3) career development.
- Our work is directly aligned with the teaching the mindsets and behaviors outlined by the American School Counseling Association
- We advocate for the well-being and success of all students!

School counselors provide programs and support designed to promote student achievement. "These programs are comprehensive in scope, preventive in design and developmental in nature" (American School Counselor Association, 2012).

How do Counselors Support Students and Families?

Core Curriculum (Classroom lessons)

Special Programs i.e. Be the Voice,
Career Day

Support for Teachers and Parents

Student Support Team (SST)

Resources for Mental Health

College and Career Awareness

Individual and Small Group Meetings



Contact Us

Vivian Hubby

hubbyv1@fultonschools.org

470.254.8665

Cindy Fernandez

fernandezc2@fultonschools.org

470.254.8677

Questions



THANK YOU



SCAN FOR SURVEY



**THIS SURVEY IS TO EVALUATE THE
EFFECTIVENESS OF THE MEETING**
[HTTPS://BIT.LY/EVALUATION_FE](https://bit.ly/evaluation_fe)

