

WHAT'S GOING ON AT

CFCMS

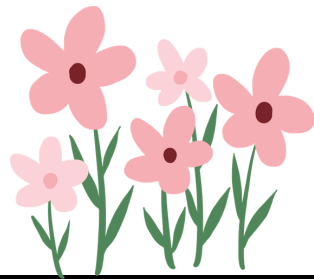
HOME OF THE HAWKS!!!



Dates to remember

April 2026

- Thursday, April 2: Student versus Staff Volleyball Game
- Friday, April 3: Parent Teacher Conference/No School for Students
- April 6-10: Division Closed for Spring Break
- Thursday, April 16: Spring pictures (7:30-11:30 am)
- Thursday, April 16: Military Family Breakfast, 8-9 am
- Friday, April 17: Report Cards Distributed
- April 20-25: Library Book Fair



Major
SCHOLASTIC
BOOK FAIR
announcement
THE BEST. DAY. EVER.
IS COMING!
CFCMS Book Fair!
April 20-24 in the Library

MILITARY FAMILY BREAKFAST



April 16, 2026

0800 - 0900

@CFCMS Cafeteria

We would like to honor our Military families by welcoming each Military student and their military family member to a Biscuit Breakfast!

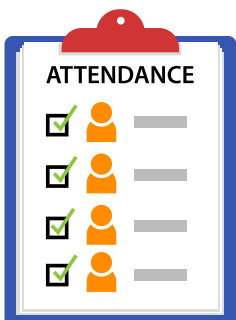
RSVP's are required to ensure we have enough so sign-up today!

We encourage military family members to wear their uniforms if possible



REMEMBER

SCHOOL STARTS AT 7:00 AM!
STUDENTS ARE CONSIDERED TARDY AFTER 7:20 !



SATURDAY ACADEMY

REGISTRATION FOR THE APRIL 18 SESSION WILL BE OPEN APRIL 8, 2026 AT 8:00 A.M. AND CLOSE APRIL 13, 2026 AT 5:00 P.M.

For more information, visit <https://www.spsk12.net/academics/saturday-academy>



APRIL SPORTING EVENTS



- Thursday, April 2: Field Hockey: KFMS vs. CFCMS @NRHS, 4:30 pm
- Tuesday, April 14: Field Hockey: CFCMS vs. FGMS @NRHS, 4:30 pm
- Wednesday, April 15: Football: CFCMS vs JFKMS @LHS, 4:30 pm
- Monday, April 20: Track Meet: @ NRHS, 4:30 pm
- Tuesday, April 21: Field Hockey: JYMS vs. CFCMS @NRHS, 4:30 pm
- Wednesday, April 22: Football: CFCMS vs KFMS @LHS, 4:30 pm
- Thursday, April 23: Field Hockey: JFKMS vs. CFCMS @LHS, 4:30 pm
- Monday, April 27: Track Meet: @ KFHS, 4:30 pm
- Tuesday, April 28: Field Hockey: CFCMS vs. KFMS @KFHS, 4:30 pm
- Wednesday, April 29: Football: CFCMS vs FGMS @LHS, 4:30 pm
- Thursday, April 30: Field Hockey: FGMS vs. CFCMS @LHS, 4:30 pm



Clear Bag Policy at ALL SPS events



PROHIBITED: Backpacks, coolers, luggage, fanny packs, purses, camera bags, binocular cases, drawstring bags, computer bags, seat cushions w/pockets

\$4 ENTRY FEE FOR REGULAR SEASON FOOTBALL GAMES



All SPS students must be accompanied by at least one adult or guardian to attend events after school



[Col. Fred Cherry Middle School Website](#)



Stay in the loop and get all the latest updates and essential information by visiting us!



If parents/guardians bring outside food for their child, it must be consumed in the cafeteria during their lunch time **only**.

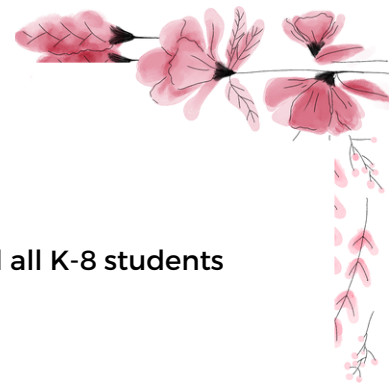
NO DOOR DASHING PERMITTED!



Please remember that all cell phones and smart devices must be turned off and stored in the students lockers during the **WHOLE** school day.



- Assigned to all students at CFCMS and all K-8 students
- Must be worn at all times - bell to bell
- MUST be worn to enter/exit buses
- Also used for Library checkouts
- Soon to be added to the cafeteria system
- Will be used for Attendance in the future
- \$5.00 replacement fee if lost, stolen or damaged - Link is on the CFCMS website



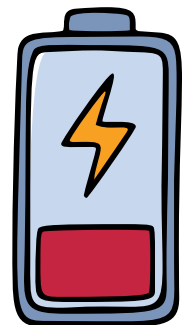
ELIGIBILITY TO ATTEND THE DANCE:

NO REFERRALS, NO HAWK REPORTS, NO MISSING ASSIGNMENTS FROM MARCH 2ND - APRIL 22ND



UPDATE COMPUTERS!!

As we head into testing in May, please make sure students are updating their chromebooks and turning them in to advisory teachers if anything is wrong to fix them **BEFORE** testing begins!



Keep charging them **NIGHTLY!**

IN THE MONTH OF *April* WE CELEBRATE.....

