

# International Transition Center

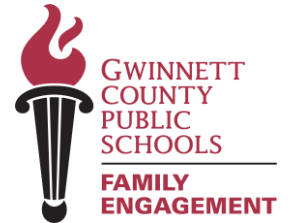
---

## 25.26 TITLE I PLANNING MEETING

Date: March 31, 2026

Time: 5PM

School Location: online



# Welcome

- *Introductions*

---

- *Purpose of meeting:*

*This meeting is about shared decision-making. All families and community members share in the decision-making process. Your voice matters in shaping how Title I funds support student success. We need your input!*

*Parents, family members, members of the community, and school staff join the Title I Planning meeting once a year in the Spring to review and provide input and jointly develop the following documents:*

At your school	At the GCPS district level
Local School Plan for Improvement (LSPI)	District Improvement Plan (DIP)
The Plan...Promise...	District Family and Community Engagement Plan
Title I Budget	District Title I Budget

# Title I Overview

---

- Is the largest federal assistance program for schools.
- Provides support to students who are at risk of not meeting the State's academic standards.
- Determines funding by the number of students receiving free or reduced-price lunch.
- Supports parents/families by offering activities and training opportunities to increase engagement in their children's education.

# Local School Input Form

Throughout today's meeting, you'll have multiple opportunities to provide input on various aspects of our school's Title I program. We've created an input form to capture your thoughts, suggestions, and questions.

Please ask if you need assistance completing the form.



FEDERAL PROGRAMS - OFFICE OF FAMILY ENGAGEMENT

## LOCAL SCHOOL PLANNING MEETING INPUT FORM 2026 - 2027

School Name: \_\_\_\_\_ Date: \_\_\_\_\_

Please return completed form to: \_\_\_\_\_

TITLE I COMPONENT	Do YOU HAVE SUGGESTIONS FOR CHANGES?		SUGGESTIONS <small>(IF YOU CHECKED YES, PLEASE WRITE YOUR SUGGESTIONS FOR CHANGE IN THIS COLUMN)</small>
	Yes	No	
1. School Goals			
2. The Plan...The Promise...			
3. Budget and Prioritized Wish List			

4. *What do you think staff members need to know to better assist you in supporting our child's learning?* \_\_\_\_\_



# DATA AND SCHOOL GOALS

---


*Understanding where we are helps us determine where we need to go.*

*Let's examine our school's performance data together and identify opportunities for growth and celebration.*

# School Profile Dashboard Data

**APTI will share the 2024-25 GCPS School Profile Dashboard SY 2024-25 data with families**





## International Transition Center

Principal: Steven Frandsen (Since 2019)

School Year 2024-25

Saved to this PC

Click to change school or language

Summary
Students
Student Performance
Staff
Family
Resources

### Student Demographics

How many students do we serve?

SCHOOL	GCPS SE	GCPS
<b>641</b>	4,166	182,518

What is the racial and ethnic background of our students?

● Asian ● Black ● Hispanic ● White

Category	Asian	Black	Hispanic	White
ITC	0%	0%	96.3%	0%
GCPS SE	36.7%	39.5%	14.7%	0%
GCPS	12.5%	31.6%	36.3%	15.0%

### Staff Demographics

What is the demographic composition of our staff?

Certified Staff by Gender

● Female ● Male


Category	Female	Male
ITC	77.8%	22.2%
GCPS SE	81.7%	18.3%
GCPS	79.3%	20.7%

Certified Staff by Race/Ethnicity

● Amer Ind ● Asian ● Black ● Hispanic ● Multiracial ● White

Category	Amer Ind	Asian	Black	Hispanic	Multiracial	White
ITC	0%	6.3%	23.8%	28.6%	0%	38.1%
GCPS SE	0%	5.1%	29.6%	7.4%	0%	55.4%
GCPS	0%	4.8%	30.7%	7.9%	0%	54.1%

This dashboard reflects data collected for the 2024-25 School Year. It is updated annually by September 01.



## International Transition Center

Principal: Steven Frandsen

School Year 2024-25

Summary
Students
Student Performance
Staff

### How do families in the International Transition Center Community feel about their school?

In the 2024-25 school year, 6.0% of the families at International Transition Center participated in the annual Educational Effectiveness Survey (18.6% participated overall for the district). The survey asks families about their perceptions of and satisfaction with their school. The chart shows the percent of families that responded positively.

● School ● EdLevel ● GCPS

Category	School	EdLevel	GCPS
Belonging	100.0%	89.5%	87.9%
Communication	98.3%	85.8%	81.7%
Cultural Proficiency	97.0%	90.2%	85.4%
Satisfaction	100.0%	89.0%	86.8%
Translation	100.0%	96.5%	96.0%

# What does the data tell us?

## *“Say Something”* Protocol

---

Review the data and use the *“Say Something”* sentence starters outlined below to share statements regarding the data. What parts of the data catch your attention?

Something I noticed...

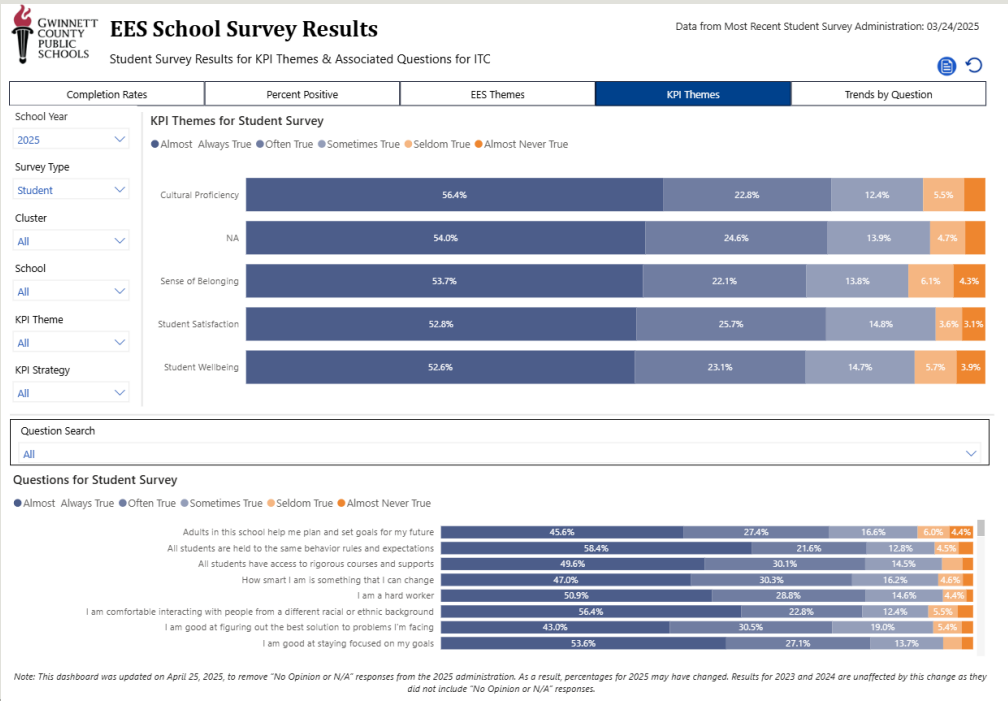
Something I wonder about...

Something that puzzles me ...

Something I'm reminded of when I review the data ...

Something I would like to talk more about ...

# Educational Effectiveness Survey (EES) – Family Perceptions Results Data



Each year, families complete the Educational Effectiveness Survey (EES) to share their perceptions about school climate, communication, student support, and educational quality. Your honest feedback helps us understand what's working well and where we can improve.

# Educational Effectiveness Survey (EES) Results Data

---

*Turn and Talk:*

- *What do you notice?*
- What were the results of the 2024-25 year's survey?
- How can we use this information?

# Local School Plan for Improvement



- 
- + Each school is responsible for the development of a local school plan for improvement (LSPI).
  - + The Local School Plan for Improvement is aligned to the district's strategic plan.
  - + Schools continually review their data sets to determine areas needing improvement and write long-term goals that are focused on the identified areas.
  - + For each goal, a school identifies specific, measurable, annual objectives and then determine how to best achieve these.
  - + The LSPI development process involves teachers, parents, and community members, so the entire school community has the opportunity to be involved in conversations about school improvement.

# Local School Plan for Improvement (LSPI)- What are our School's Goals and How do we plan to accomplish our goals ?

---

## Empathy Goal- Staff and Student Well Being

### **Goal #1:**

Decrease the percentage of students considered chronically absent.

#### **Action Step 1:**

MTSS team check in frequently on chronically absent students.

#### **Action Step 2:**

Enhance our Social Emotional Learning program to meet their needs.

**\*Host Family Engagement Workshops related to attendance.**

# Local School Plan for Improvement (LSPI)- What are our School's Goals and How do we plan to accomplish our goals ?

---

Equity Identify students' individual needs and provide support to increase English proficiency and fill the gaps in their educational background

## **Goal #2:**

Continue to implement PBIS at all sites.

### **Action Step 1:**

Identify effective interventions and rewards

### **Action Step 2:**

Study PBIS as part of MTSS.

**\*Family Engagement Workshops about ELTs and how to engage in school PBIS challenges.**

# Local School Plan for Improvement (LSPI)- What are our School's Goals and How do we plan to accomplish our goals ?

---

Equity Goal: Opportunity and Access

## **Goal #3:**

Increase the percentage of students performing well on the GaDOE exams

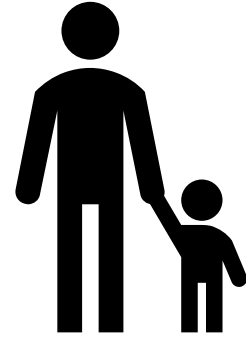
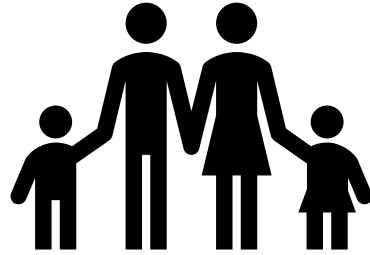
### **Action Step 1:**

Use a teaching framework that allows for lots of practice and repetition

### **Action Step 2:**

Develop language objectives and practice producing English in every lesson

Family Engagement Workshop on understanding GMAS and Gwinnett Writes




# Family and Community Engagement Documents

*Strong partnerships between school and home create the foundation for student success. Let's review the key documents that guide our family engagement efforts.*

# Title I School-Family Plan...The Promise...

**WORKING TOGETHER TO ENSURE SUCCESS**

*The International Transition Center will...*




- Plan and implement engaging instruction with a literacy focus across content areas
- Provide parent communication and engagement in a variety of ways to encourage and equip parents to support their students' academic progress
- Equip students and teachers with the resources and tools necessary for academic success

*Dr. Steve Prandeen*  
March 31, 2026

Principal's Signature/Date

*As Families, we will...*




- Participate in parent meetings and workshops
- Read and ask questions about all communication that comes from the ITC through ParentSquare and email
- Monitor student progress using the Parent Portal

**VISIT OUR FAMILY ENGAGEMENT CENTER**

OUR FAMILY ENGAGEMENT CENTERS HAVE LEARNING GAMES, BOOKS, AND MANY OTHER RESOURCES AVAILABLE FOR FAMILIES TO CHECKOUT AND USE AT HOME. OUR PARENT OUTREACH LIAISON IS PATRICIA ESCOBAR. SHE IS AVAILABLE TO HELP YOU FIND RESOURCES, NAVIGATE THE PARENT PORTAL, CONNECT WITH TEACHERS, AND LEARN ABOUT WAYS YOU CAN HELP YOUR CHILDREN AT HOME.


*As Students, we will...*



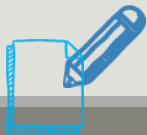
- Actively engage in the daily learning activities in all classes
- Be informed about our own progress, strengths, weaknesses, and academic opportunities through Google Classroom, teacher feedback, and ParentSquare
- Practice academic skills with parents at home

Our Family Engagement Centers are located at our Berkmar, Central Gwinnett, and Norcross campuses.

**Volunteer opportunities**



Review The School-Family Plan...The Promise... document with families and gather written input for revisions.



Please add your comments/suggestions to the Local School Planning Meeting Input Form under the section labeled **The Plan... The Promise.**

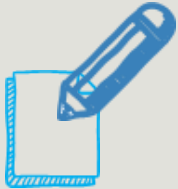


## Budget & Resources

---

*Understanding how Title I funds are allocated helps ensure resources align with our school's greatest needs. Let's explore our budget and prioritized wish list together.*

# Our School's Title I Budget and Prioritized Wish List

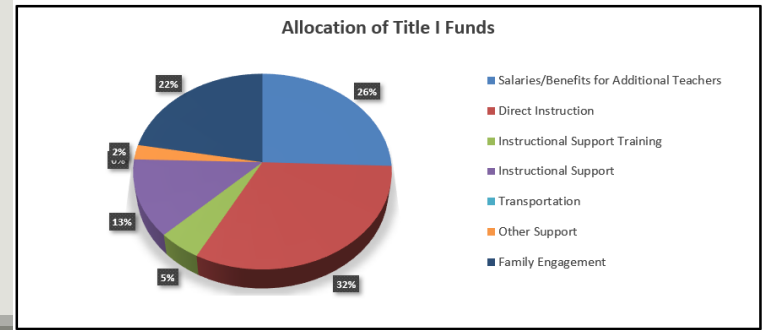


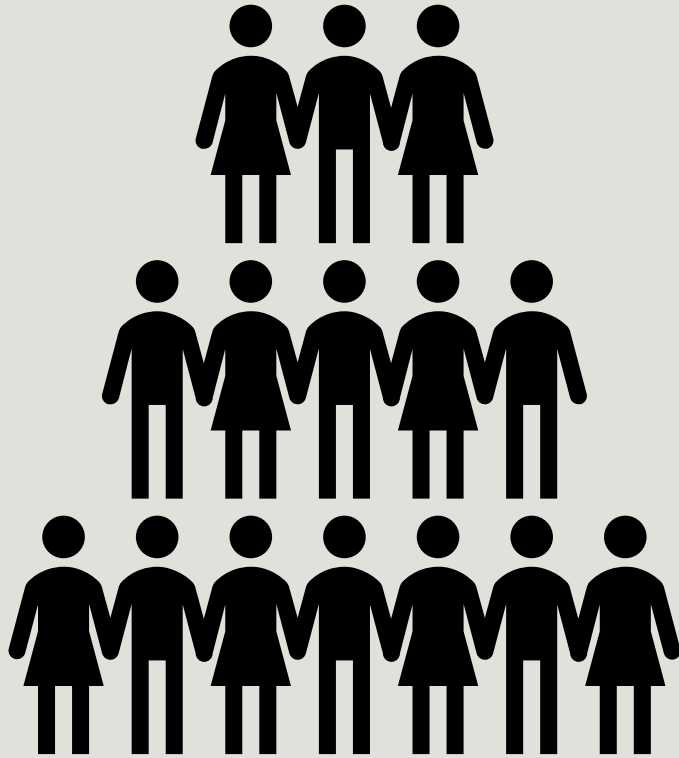
Families, please add your comments/suggestions to the Local School Planning Meeting Input Form under the section labeled **Budget and Prioritized Wish List**



## INTERNATIONAL TRANSITION CENTER TITLE I BUDGET SUMMARY 2025-2026

Budget Category	Amount	Percent of Budget	Use of Funds
Salaries/Benefits for Additional Teachers	\$102,479	25.60%	
Direct Instruction	\$128,707	32.15%	
Instructional Support Training	\$19,669	4.91%	
Instructional Support	\$51,248	12.80%	
Transportation	\$0	0.00%	
Other Support	\$9,688	2.42%	
Family Engagement	\$88,511	22.11%	
<b>TOTAL ALLOCATION</b>	<b>\$400,302</b>	<b>100%</b>	





# Staff Training

---

*Investing in our staff's professional growth ensures they have the skills, knowledge, and strategies to support every student's success and partner effectively with families.*

# Building School Staff Capacity - We Need Your Input!

---

Families, what do you think staff members need to know to better assist you in supporting your child's learning?



*Families, please add your comments/suggestions to the Local School Planning Meeting Input Form*



# GCPS District Input

*Your voice extends beyond our school walls.  
Let's explore opportunities to influence district-  
level Title I planning and family engagement  
initiatives.*

# GCPS District Input Form



FEDERAL PROGRAMS – OFFICE OF FAMILY ENGAGEMENT

## DISTRICT PLANNING MEETING INPUT FORM 2026 - 2027

School Name: \_\_\_\_\_

Date: \_\_\_\_\_

Please return completed form to: \_\_\_\_\_

TITLE   COMPONENT	DO YOU HAVE SUGGESTIONS FOR CHANGES?		SUGGESTIONS <i>(IF YOU CHECKED YES, PLEASE WRITE YOUR SUGGESTIONS FOR CHANGE IN THIS COLUMN)</i>
	Yes	No	
1. GCPS Family and Community Engagement Plan			
2. 1% Set-Aside for Family Engagement Activities			

# GCPS Family and Community Engagement Plan



[HOME](#) / [ABOUT US](#) / [DIVISIONS AND TEAMS](#) / [SCHOOL IMPROVEMENT AND OPERATIONS](#) / [DEPARTMENT OF FEDERAL PROGRAMS & COMPLIANCE](#) / [ENGAGE, EQUATE, EMPOWER SERIES](#) / [FAMILY AND COMMUNITY ENGAGEMENT PLAN](#)

## Family and Community Engagement Plan



While your student may receive instruction during the school day, we know that a child's first and most important teachers are parents and family members. We know you play an integral role in the education of your child, and we want to encourage and support you to be actively involved in your child's school. We need your input, your suggestions, and your perspective to make decisions about your child's school experience. Additionally, our district receives Title I, Part A funds. Title I, Part A supplemental funds are used to enhance the educational program to meet the needs of each and every child. We use these funds to hire additional teachers in our Title I schools, to purchase technology and resources, and to train school personnel who serve as ambassadors for families and the school community.

[GCPS Family and Community Engagement Plan Video \(English\)](#)

[GCPS Family and Community Engagement Plan Video \(Spanish\)](#)

[GCPS Family and Community Engagement Plan \(Written Document\)](#)



# GCPS District Input Form



FEDERAL PROGRAMS – OFFICE OF FAMILY ENGAGEMENT

**DISTRICT PLANNING MEETING  
INPUT FORM  
2026 - 2027**

School Name: \_\_\_\_\_ Date: \_\_\_\_\_

Please return completed form to: \_\_\_\_\_

TITLE I COMPONENT	DO YOU HAVE SUGGESTIONS FOR CHANGES?		SUGGESTIONS <i>(IF YOU CHECKED YES, PLEASE WRITE YOUR SUGGESTIONS FOR CHANGE IN THIS COLUMN)</i>
	Yes	No	
1. GCPS Family and Community Engagement Plan			
2. 1% Set-Aside for Family Engagement Activities			

# GCPS Family and Community Engagement Plan



- Work with families, parents, teachers, school staff and community members to develop a Family and Community Engagement Plan.
- Office of Federal Programs provides support to all Title I schools.
- Survey families for content and effectiveness of Family and Community Engagement Plan.
- Collaborate with federal, state and local programs.
- Building Capacity of Parents
- Building Capacity of School Staff



*Families, please add your comments/suggestions to the District Planning Meeting Input Form*

# 1% Family Engagement Set-aside

---



## Title I Family Engagement Budget:

- 1% of the GCPS Title I budget supports family engagement and is equally divided to all Title I schools to partially fund a Parent Instructional Coordinator and/or a Parent Outreach Liaison and/or to fund family engagement at schools.
- Other suggestions?



*Families, please add your comments/suggestions to the District Planning Meeting Input Form*

# Save the Date!

## Title I Document Review Period

---

*Your participation doesn't end today! After we incorporate feedback from this meeting, all Title I planning documents will be available for a review period.*

**March 31, 2026-April 3, 2026**

*Families, please share this information with other families you know who were unable to attend the Title I Planning Meeting.*

*We need their input!*

