



LAWRENCEVILLE ES

25.26 TITLE I PLANNING MEETING

Date: March 25, 2026

Time: 4:30-5:30

School Location: Media Center





Welcome

- *Introductions*

- *Purpose of meeting:*

This meeting is about shared decision-making. All families and community members share in the decision-making process. Your voice matters in shaping how Title I funds support student success. We need your input!

Parents, family members, members of the community, and school staff join the Title I Planning meeting once a year in the Spring to review and provide input and jointly develop the following documents:

| At your school | At the GCPS district level |
|--|---|
| Local School Plan for Improvement (LSPI) | District Improvement Plan (DIP) |
| The Plan...Promise... | District Family and Community Engagement Plan |
| Title I Budget | District Title I Budget |



Title I Overview

- Is the largest federal assistance program for schools.
- Provides support to students who are at risk of not meeting the State's academic standards.
- Determines funding by the number of students receiving free or reduced-price lunch.
- Supports parents/families by offering activities and training opportunities to increase engagement in their children's education.



Local School Input Form

Throughout today's meeting, you'll have multiple opportunities to provide input on various aspects of our school's Title I program. We've created an input form to capture your thoughts, suggestions, and questions.

Please ask if you need assistance completing the form.



FEDERAL PROGRAMS - OFFICE OF FAMILY ENGAGEMENT

LOCAL SCHOOL PLANNING MEETING INPUT FORM 2026 - 2027

School Name: _____ Date: _____

Please return completed form to: _____

| TITLE I COMPONENT | Do YOU HAVE SUGGESTIONS FOR CHANGES? | | SUGGESTIONS <small>(IF YOU CHECKED YES, PLEASE WRITE YOUR SUGGESTIONS FOR CHANGE IN THIS COLUMN)</small> |
|-------------------------------------|--------------------------------------|----|---|
| | Yes | No | |
| 1. School Goals | | | |
| 2. The Plan...The Promise... | | | |
| 3. Budget and Prioritized Wish List | | | |

4. *What do you think staff members need to know to better assist you in supporting our child's learning?* _____



DATA AND SCHOOL GOALS


Understanding where we are helps us determine where we need to go.

Let's examine our school's performance data together and identify opportunities for growth and celebration.

School Profile Dashboard Data



APTI will share the 2024-25 [GCPS School Profile Dashboard SY 2024-25](#) data with families.



Gwinnett County Public Schools
School Profile Dashboard
 Superintendent: Dr. Calvin J. Watts
 School Year 2023-24

Gwinnett County Public Schools has created this school Profile Dashboard to provide our parents and community members with meaningful information about our schools.

- Select a language from the dropdown box below.
- Select or search for a school from the dropdown box below.
- Click the SUBMIT button to view the dashboard for the selected school.

Languages


English

SCHOOL


Archer HS

Submit


Click the button below to view the user guide.




Click the button below to view the instructional video.



Click the button below to leave feedback.



This dashboard is updated yearly in January and July, representing data collected for the 2023-24 School Year.



Archer High School
 Principal: Dr. Conquisha D. Thompson (Since 2022)
 School Year 2023-24

Click to change school or language

Summary

Students

Student Performance

Staff

Family

Resources

Student Demographics

How many students do we serve?

| SCHOOL | GCPS HS | GCPS |
|--------------|---------|---------|
| 3,063 | 59,368 | 182,214 |

What is the racial and ethnic background of our students?

Amer Ind ● Asian ● Black ● Hispanic ● Multiracial ● White

| SCHOOL | GCPS HS | GCPS |
|-----------|---------|-------|
| Archer HS | 54.6% | 19.9% |
| GCPS HS | 12.0% | 33.5% |
| GCPS | 11.9% | 32.1% |

What percent of students receive support services?

| Free & Reduced Priced Meals | | | Multilingual Learner Education | | |
|-----------------------------|---------|--------------|--------------------------------|---------|--------------|
| SCHOOL | GCPS HS | GCPS | SCHOOL | GCPS HS | GCPS |
| 54.0% | 60.3% | 65.0% | 6.9% | 16.3% | 25.9% |

Special Education

| SCHOOL | GCPS HS | GCPS |
|--------------|---------|--------------|
| 13.3% | 12.7% | 13.7% |

Gifted Education

| SCHOOL | GCPS HS | GCPS |
|--------------|---------|--------------|
| 18.8% | 20.1% | 16.2% |

Staff Demographics

What is the demographic composition of our staff?

Certified Staff by Gender

Female ● Male

| SCHOOL | Female | Male |
|-----------|--------|-------|
| Archer HS | 63.5% | 36.5% |
| GCPS HS | 60.6% | 39.4% |
| GCPS | 79.6% | 20.4% |

Certified Staff by Race/Ethnicity

Amer Ind ● Asian ● Black ● Hispanic ● White

| SCHOOL | Amer Ind | Asian | Black | Hispanic | White |
|-----------|----------|-------|-------|----------|-------|
| Archer HS | 26.0% | 0.5% | 66.9% | | |
| GCPS HS | 4.9% | 26.8% | 7.5% | 60.2% | |
| GCPS | 5.1% | 31.5% | 7.4% | 56.1% | |

This dashboard is updated yearly in January and July, representing data collected for the 2023-24 School Year.



What does the data tell us?

“*Say Something*” Protocol

Review the data and use the “*Say Something*” sentence starters outlined below to share statements regarding the data. What parts of the data catch your attention?

Something I noticed...

Something I wonder about...

Something that puzzles me ...

Something I’m reminded of when I review the data ...

Something I would like to talk more about ...

Educational Effectiveness Survey (EES) – Family Perceptions Results Data

2024-25 Family Perceptions
Educational Effectiveness Survey™ - FAMILY
Lawrenceville ES



Each year, families complete the Educational Effectiveness Survey (EES) to share their perceptions about school climate, communication, student support, and educational quality. Your honest feedback helps us understand what's working well and where we can improve.



APTI, place
screenshot of your
school's Family
Perception
Educational
Effectiveness Survey
(EES) results here.

Survey Item Summary [Family Engagement Workshop Input](#) [Response Count by Language](#)

| THEME ↓ | QUESTION | % POSITIVE RESPONSES* |
|--------------------------------|---|-----------------------|
| Communication | This school communicates with me about my student's progress | 84.7% |
| | Communication/materials I receive from the school are in a language I can understand | 95.2% |
| | I am encouraged to collaborate with my student's teachers about my student's learning | 88.3% |
| | This school communicates effectively with my family | 89.7% |
| Parent & Community Involvement | When I share concerns with my student's teacher, they listen | 91.9% |
| | Parents/families have input into plans for improving this school | 85.7% |
| | Parent organizations at this school actively encourage all families to participate | 92.9% |
| | There is a high level of community support for this school | 89.5% |
| | Parents/families participate in important decisions about their student's education | 89.7% |
| | This school respects the different cultures represented in our community | 97.1% |
| | This school tells me how I can help my student with homework | 90.9% |
| I feel welcome at this school | 94.9% | |



Educational Effectiveness Survey (EES) Results Data

Turn and Talk:

- *What do you notice?*
- What were the results of the 2024-25 year's survey?
- How can we use this information?



Local School Plan for Improvement

- + Each school is responsible for the development of a local school plan for improvement (LSPI).
- + The Local School Plan for Improvement is aligned to the district's strategic plan.
- + Schools continually review their data sets to determine areas needing improvement and write long-term goals that are focused on the identified areas.
- + For each goal, a school identifies specific, measurable, annual objectives and then determine how to best achieve these.
- + The LSPI development process involves teachers, parents, and community members, so the entire school community has the opportunity to be involved in conversations about school improvement.



Local School Plan for Improvement (LSPI)- What are our School's Goals and How do we plan to accomplish our goals ?

Goal #1: At Lawrenceville Elementary, we are committed to supporting the well-being of all students and staff. This year, we are focusing on helping every child feel welcomed, included, and connected at school by improving how we support student belonging and overall school climate

Action Step 1: LES staff will increase celebration of students through recognition activities such as Honor Roll, Perfect Attendance, LEADER Awards, Best on Bus, and 1st and 2nd semester awards ceremonies.

Action Step 2: LES will continue student before and after school clubs

Action Step 3: LES will support student behaviors with full implementation of PBIS program. Tier I and Tier II teams will meet regularly and share data with fidelity.



Local School Plan for Improvement (LSPI)- What are our School's Goals and How do we plan to accomplish our goals ?

Goal #2: Lawrenceville Elementary will provide strong academic and emotional support for all students by using a schoolwide system that helps us identify their needs early and remove any barriers to learning. Our goal is to make sure every child has what they need to be successful in school

Action Step 1: LES commits to use iReady to set goals, monitor progress, and conduct data talks with students.

Action Step 2: MTSS structures will be maintained by the MTSS coordinator and supported by the intervention staff members.

- ❖ Academic Press and Supportive community for tiers 1, 2, and 3
- ❖ Monthly Knight Talks



Local School Plan for Improvement (LSPI)- What are our School's Goals and How do we plan to accomplish our goals ?

Goal #3: Lawrenceville Elementary will expand student opportunities and establish conditions whereby each and every student receives what they need to develop their academic and social potential.

Action Step 1: LES will maintain its focus on High Quality Tier 1 instruction in all classroom settings, including ML and special education classroom settings.

Action Step 2: LES will increase the opportunity for Gifted eligibility



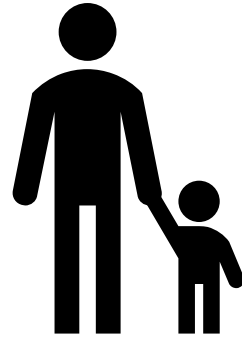
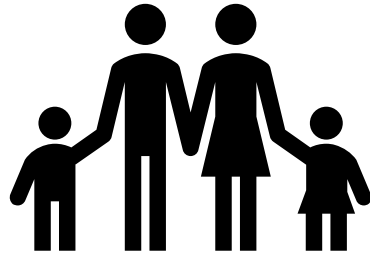
Local School Plan for Improvement (LSPI)- What are our School's Goals and How do we plan to accomplish our goals ?

Goal #4: Lawrenceville Elementary will improve two-way communication, engagement, and outreach to reach the target audiences of teachers, families, and the community.

Action Step 1: Grade levels will effectively communicate with families.

Action Step 2: LES PTA will be involved in the initiatives of the school.

Action Step 3: Monthly newsletters will be sent by the principal to provide timely updates to parents/families



Family and Community Engagement Documents

Strong partnerships between school and home create the foundation for student success. Let's review the key documents that guide our family engagement efforts.

Title I School-Family Plan...The Promise...

The Plan The Promise 2025-26

LAWRENCEVILLE ELEMENTARY SCHOOL

THE PLAN...
THE PROMISE...
2025-2026

 Lawrenceville Elementary School

Today's Learners...

Tomorrow's Leaders

122 Gwinnett Dr.
Lawrenceville, GA 30046

Phone Number 770-963-1813

Visit <https://www.gcpsk12.org/LawrencevilleES>

Last Revised: May 9, 2025

WHERE IS THE PLAN
AVAILABLE?

The Family and Community Engagement

WHAT IS A FAMILY AND COMMUNITY ENGAGEMENT PLAN?

It is a plan that describes how our school will provide opportunities to improve family engagement that will support student learning at school and at home. All students and their families are invited and encouraged to fully participate in the opportunities described in this plan. The school will provide information and as many opportunities as possible for the participation of all family members.

WHAT IS A SCHOOL-FAMILY PROMISE?

WORKING TOGETHER TO ENSURE SUCCESS

LET'S TALK

Lawrenceville Elementary is committed to frequent two-way communication with families about student learning. Some of the ways we can foster effective communication include:

- ParentSquare, phone calls, email
- Teacher Newsletters
- Knight News-Family Edition
- Parent/Teacher Conferences
- School Website, Facebook, Instagram
- Parent Portal
- My PaymentsPlus

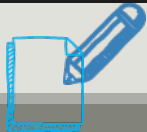
If you need interpretation and/or translation services, please contact: Glenda Ramos at (678) 376-8634 or Glenda.Ramos@gcpsk12.org

ACTIVITIES TO BUILD OUR PARTNERSHIP

DID YOU KNOW?



Review The School-Family Plan...The Promise... document with families and gather written input for revisions.



Please add your comments/suggestions to the Local School Planning Meeting Input Form under the section labeled **The Plan... The Promise.**



Budget & Resources

Understanding how Title I funds are allocated helps ensure resources align with our school's greatest needs. Let's explore our budget and prioritized wish list together.

Our School's Title I Budget and Prioritized Wish List

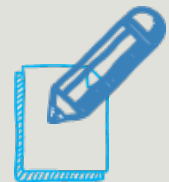


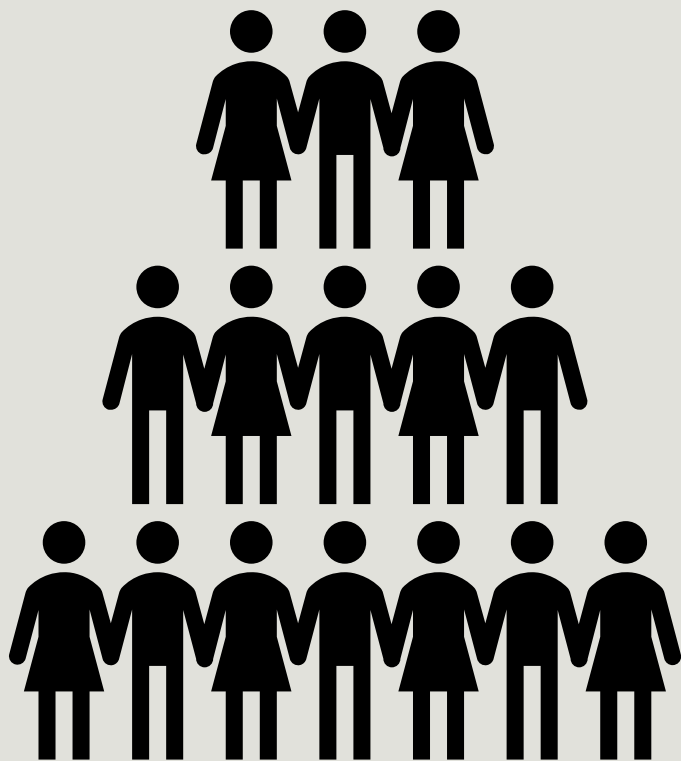
TITLE I BUDGET SUMMARY 2025-2026

| Budget Category | Amount | Percent of Budget | Use of Funds |
|---|------------------|-------------------|---|
| Salaries/Benefits for Additional Teachers | \$198,537 | 56.29% | 2 teachers |
| Direct Instruction | \$37,580 | 10.65% | Classroom supplies, extended learning program, technology supplies, and web-based subscriptions. |
| Instructional Support Training | \$20,124 | 5.71% | Professional development for teachers, teacher release days (sub-coverage), resources and supplies for teachers. |
| Instructional Support | \$11,946 | 3.39% | Collaborative planning time for teachers before or after school. |
| Transportation | \$0 | 0.00% | |
| Other Support | \$0 | 0.00% | |
| Family Engagement | \$84,541 | 23.97% | 1 Parent Outreach Liasison (POL), and family center supplies and resources |
| TOTAL ALLOCATION | \$352,728 | 100% | |

| Title I Wish List | |
|------------------------------------|----------|
| Item | Cost |
| Spring and Fall ELT Transportation | \$34,000 |

*Families, please add your comments/suggestions to the Local School Planning Meeting Input Form under the section labeled **Budget and Prioritized Wish List***





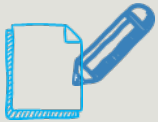
Staff Training

Investing in our staff's professional growth ensures they have the skills, knowledge, and strategies to support every student's success and partner effectively with families.



Building School Staff Capacity - We Need Your Input!

Families, what do you think staff members need to know to better assist you in supporting your child's learning?



Families, please add your comments/suggestions to the Local School Planning Meeting Input Form



GCPS District Input

*Your voice extends beyond our school walls.
Let's explore opportunities to influence district-
level Title I planning and family engagement
initiatives.*



GCPS District Input Form



FEDERAL PROGRAMS – OFFICE OF FAMILY ENGAGEMENT

DISTRICT PLANNING MEETING INPUT FORM 2026 - 2027

School Name: _____

Date: _____

Please return completed form to: _____

| TITLE COMPONENT | DO YOU HAVE SUGGESTIONS FOR CHANGES? | | SUGGESTIONS <i>(IF YOU CHECKED YES, PLEASE WRITE YOUR SUGGESTIONS FOR CHANGE IN THIS COLUMN)</i> |
|--|--------------------------------------|----|---|
| | Yes | No | |
| 1. GCPS Family and Community Engagement Plan | | | |
| 2. 1% Set-Aside for Family Engagement Activities | | | |



GCPS Family and Community Engagement Plan



STUDENTS FAMILIES STAFF [TRANSLATE](#)  

[BOARD](#) [BUDGET INFORMATION](#) [CALENDAR](#) [CAREERS](#) [DIVISIONS AND TEAMS](#) [E-SPLIST AND G.O. BOND PROGRAMS](#) [EMERGENCY PROCEDURES](#) [EVERY DAY COUNTS IN GCPS!](#) [FREQUENTLY ASKED QUESTIONS IN GCPS](#) [GCPS BY THE NUMBERS](#) [OPEN RECORDS REQUESTS](#) [OUR BLUEPRINT FOR THE FUTURE](#) [PORTRAIT OF A GRADUATE](#)
[SUPERINTENDENT](#) [STAFF DIRECTORY](#) [STAFF RESOURCES](#) [TITLE IX / NONDISCRIMINATION POLICIES](#)

[HOME](#) / [ABOUT US](#) / [DIVISIONS AND TEAMS](#) / [SCHOOL IMPROVEMENT AND OPERATIONS](#) / [DEPARTMENT OF FEDERAL PROGRAMS & COMPLIANCE](#) / [ENGAGE, SOLVE, EMPOWER SERIES](#) / [FAMILY AND COMMUNITY ENGAGEMENT PLAN](#)

Family and Community Engagement Plan



While your student may receive instruction during the school day, we know that a child's first and most important teachers are parents and family members. We know you play an integral role in the education of your child, and we want to encourage and support you to be actively involved in your child's school. We need your input, your suggestions, and your perspective to make decisions about your child's school experience. Additionally, our district receives Title I, Part A funds. Title I, Part A supplemental funds are used to enhance the educational program to meet the needs of each and every child. We use these funds to hire additional teachers in our Title I schools, to purchase technology and resources, and to train school personnel who serve as ambassadors for families and the school community.

[GCPS Family and Community Engagement Plan Video \(English\)](#)

[GCPS Family and Community Engagement Plan Video \(Spanish\)](#)

[GCPS Family and Community Engagement Plan \(Written Document\)](#)





GCPS District Input Form



FEDERAL PROGRAMS – OFFICE OF FAMILY ENGAGEMENT

DISTRICT PLANNING MEETING INPUT FORM 2026 - 2027

School Name: _____ Date: _____

Please return completed form to: _____

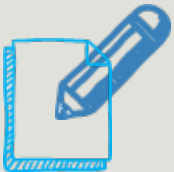
| TITLE I COMPONENT | DO YOU HAVE SUGGESTIONS FOR CHANGES? | | SUGGESTIONS <i>(IF YOU CHECKED YES, PLEASE WRITE YOUR SUGGESTIONS FOR CHANGE IN THIS COLUMN)</i> |
|--|--------------------------------------|----|---|
| | Yes | No | |
| 1. GCPS Family and Community Engagement Plan | | | |
| 2. 1% Set-Aside for Family Engagement Activities | | | |



GCPS Family and Community Engagement Plan



- Work with families, parents, teachers, school staff and community members to develop a Family and Community Engagement Plan.
- Office of Federal Programs provides support to all Title I schools.
- Survey families for content and effectiveness of Family and Community Engagement Plan.
- Collaborate with federal, state and local programs.
- Building Capacity of Parents
- Building Capacity of School Staff



Families, please add your comments/suggestions to the District Planning Meeting Input Form



1% Family Engagement Set-aside

Title I Family Engagement Budget:

- 1% of the GCPS Title I budget supports family engagement and is equally divided to all Title I schools to partially fund a Parent Instructional Coordinator and/or a Parent Outreach Liaison and/or to fund family engagement at schools.
- Other suggestions?



Families, please add your comments/suggestions to the District Planning Meeting Input Form



Save the Date!

Title I Document Review Period

Your participation doesn't end today! After we incorporate feedback from this meeting, all Title I planning documents will be available for a review period.

March 30th on our School Website and Parent Square

Families, please share this information with other families you know who were unable to attend the Title I Planning Meeting.

We need their input!



We value your input!

AP will insert the following information here:

- What other opportunities do families have to provide input regarding Title I components?
- What will our school do with the input provided?