



PITTSBURGH PUBLIC SCHOOLS

FUTURE-READY

FACILITIES PLAN UPDATE

Thursday, November 6, 2025

Pittsburgh Public Schools Presents Future-Ready Facilities Implementation Plan

Plan details a phased timeline, financial impact, and student-centered strategies to modernize and sustain District operations



Pittsburgh Public Schools

FUTURE-READY

FACILITIES IMPLEMENTATION PLAN

PRESENTATION

Dr. Wayne N. Walters, Superintendent

and the Leadership Team

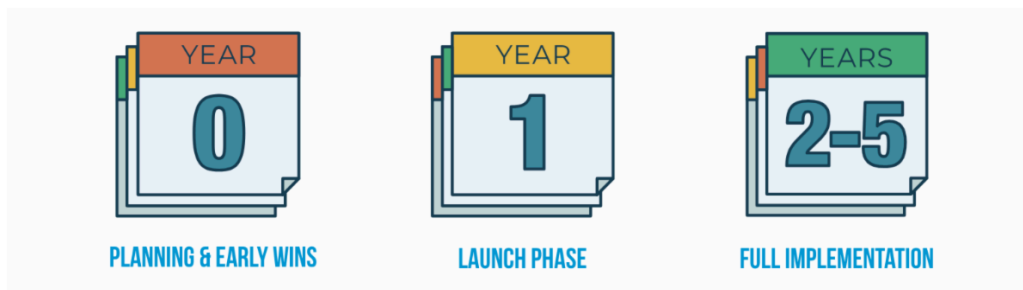
OCTOBER 30, 2025

On October 30, Pittsburgh Public Schools (PPS) Superintendent Dr. Wayne N. Walters, joined by members of the District’s Leadership Team, presented the **Future-Ready Facilities Implementation Plan** to the Board of Directors—marking the next major step in a two-year effort to modernize PPS facilities and learning environments.

“This Implementation Plan is more than a document—it’s a roadmap for how we move forward together as a district, as a community, and most importantly, for our students,” said Superintendent Walters. “It shows how we will deliver on our promise that every child in Pittsburgh will have access to modern learning environments, rigorous academics, and the full range of opportunities they deserve.”

The 140-page plan provides a comprehensive roadmap for aligning the District’s facilities, staffing, and programs with the needs of students. Developed in direct response to eight areas of analysis requested by the Board, the plan reinforces PPS’s commitment to transparency, accountability, and fiscal responsibility.

A Phased Approach to Change



The Implementation Plan outlines a **three-phase timeline** designed to balance urgency with stability:

- **Year 0 (2025–26):** Focus on readiness and early wins, including facility walkthroughs, HR “Road Shows,” and launch of the *Find My School* tool to help families view new feeder patterns and school assignments.
- **Year 1 (2026–27):** Transition year centered on people and culture. Students and staff begin in new configurations while schools build shared identity, belonging, and stability before instructional shifts occur.
- **Year 2 and Beyond (2027–30):** Full implementation of new instructional delivery models, major construction projects, and modernization efforts aligned to the plan’s guiding values of equity, excellence, efficiency, and access.

Fiscal Sustainability and Reinvestment

The Future-Ready Facilities Plan brings PPS closer to financial stability while reinvesting in teaching and learning. As early as 2026, the District will realize savings from the Future-Ready Facilities Plan by aligning facilities, staffing, and program delivery.

This plan alone will not solve all of our fiscal challenges, but it contributes significantly to our progress,” said Chief Financial Officer, Ronald Joseph. “It represents a concrete step toward long-term sustainability, signaling our commitment to fiscal responsibility and to making thoughtful decisions that strengthen our system over time.”

Highlights include:

- **\$8 million in recurring annual savings** beginning in 2027 from building closures, transportation efficiencies, and delivery-model changes.
- **\$102 million in cost avoidance through 2031** tied to reduced maintenance and capital obligations.
- A **\$453.5 million, seven-year capital plan** prioritizing modernization, safety, and equity.
- Reinvestment of savings into academic coaches, English Language Development specialists, and Teaching and Learning Centers to strengthen instruction and staff support.

As Pittsburgh Public Schools continues to move forward with its Future-Ready Implementation Plan, some have raised questions about projected savings and staffing. The plan states that at full build-out, delivery model changes will represent a savings of \$6.3 million. Some have claimed those savings come from eliminating 152.5 full-time positions, implying that staff will lose their jobs.

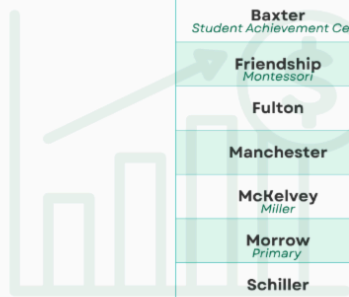
That claim is false. The projected savings come from responsible staffing alignment, achieved through the elimination of vacant and future unfilled positions, not layoffs. Of the 155.5 positions

referenced in the plan, reductions will occur only through existing vacancies and future separations, such as retirements or resignations.

A clear example can be seen in Food Services. The department currently has 229 positions, with 89 of those already vacant. The plan reduces the total number of positions to 181, closing 48 of those vacancies—meaning no job losses. In fact, PPS anticipates needing to hire for about 68 Food Services roles next year due to ongoing vacancies and expected retirements. This approach ensures that PPS remains fiscally responsible while protecting jobs and keeping resources focused on students and classrooms.

Pittsburgh Public Schools is committed to transparency. We encourage families and community members to read the Future-Ready Implementation Plan for themselves and not rely on misinformation. Get the facts directly www.pghschools.org/futurepps.

Financial Impact | Cost Avoidance from Closures



Closed Building	2025-31 Capital Plan	Total Annual Utility Cost Reduction	Total Cost Avoidance
Baxter <i>Student Achievement Center</i>	\$7,688,880	\$84,628	\$7,773,508
Friendship <i>Montessori</i>	\$16,568,734	\$61,485	\$16,630,219
Fulton	\$9,078,920	\$49,030	\$9,127,950
Manchester	\$20,939,572	\$77,458	\$21,017,030
McKelvey <i>Miller</i>	\$11,880,240	\$71,023	\$11,951,263
Morrow <i>Primary</i>	\$5,758,400	\$95,144	\$5,853,544
Schiller	\$7,189,740	\$75,550	\$7,265,290
Spring Hill	\$4,730,620	\$41,025	\$4,771,645
Woolslair	\$18,425,700	\$36,503	\$18,462,203
Total	\$102,260,806	\$591,846	\$102,852,652

14

Attendance Zones, Feeder Patterns, and Transportation

The plan includes Pittsburgh Public Schools’ first comprehensive review of attendance zones and feeder patterns in nearly two decades. On May 21, the District released proposed updates for public review and launched the Future-Ready Find My School tool to support transparent, citywide engagement. In addition, members of the District’s Leadership Team—representing Operations, School Performance, Communications, and Technology—conducted detailed walkthroughs of school buildings with principals to confirm that each site can accommodate projected enrollment, including PreK, Programs for Students with Exceptionalities, and specialized spaces such as science, art, and music classrooms. Guided by data, staff collaboration, and extensive community feedback, the District refined the proposals to address uneven enrollment, outdated boundaries, and walkability through the following key adjustments.

Key refinements include:

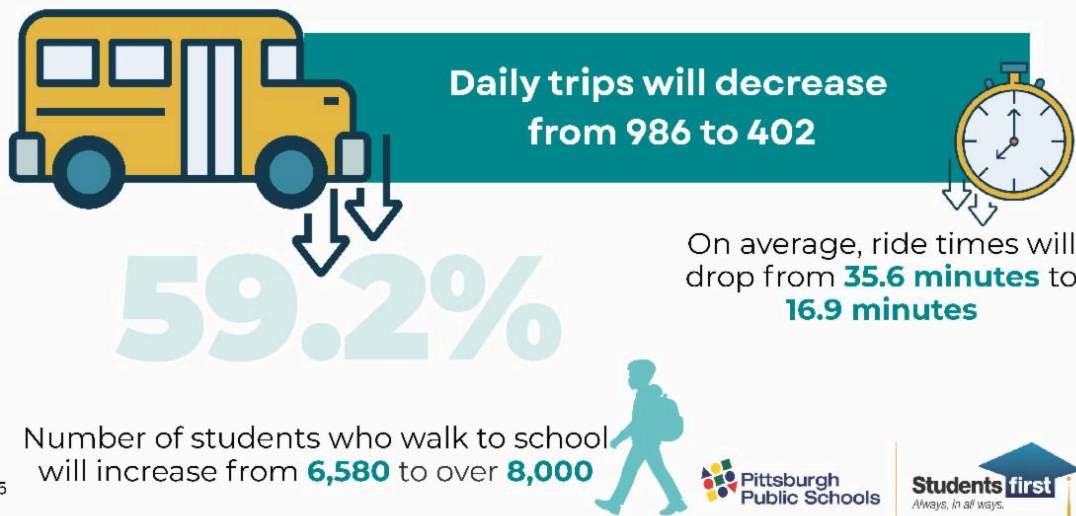
- **Lincoln/Belmar:** Students will now feed into Sterrett and Westinghouse, maintaining peer continuity through middle and high school. The Lincoln attendance zone has also been expanded to help relieve enrollment pressures at Faison, which will see growth as it serves all East Hills K–5 students.
- **Hill District:** In response to family concerns about young students walking to Weil from the Upper Hill and to address capacity challenges at Weil, boundaries were adjusted to shift approximately 53 K–5 students from the Upper Hill and North Oakland neighborhoods to Liberty K–5. About 15 percent of Upper Hill students already attend Liberty, reflecting a strong existing connection. To further balance enrollment and services, a new English Language Development (ELD) Center will open at Dilworth.
- **Garfield:** To balance enrollment and preserve specialized programs, boundaries were adjusted so students living between Columbo and Black Streets will now attend Sunnyside PreK–5 instead of Liberty. This change increases Sunnyside’s utilization to

about 87 percent and lowers Liberty's to 77 percent, maintaining space for ELD services and ensuring equitable class sizes.

- **South:** Attendance zones were realigned to balance enrollment and preserve specialized programs at Roosevelt and West Liberty. Approximately 50 K–5 students residing in the Mt. Oliver area — between Brownsville Road and Hays Avenue down to South Borough Way — who were previously assigned to West Liberty, have now been reassigned to Pittsburgh Roosevelt.
- **Northside:** The Find My School tool has been updated to include Year 1 and Year 2 phasing ahead of the 2028–29 reopening of Northview PreK–5. Students in grades K–5 from Perry North and Summer Hill will remain at Morrow during the 2026–27 and 2027–28 school years before transitioning to Northview in 2028–29. During this period, a temporary English Language Development (ELD) Center will operate at Morrow to maintain service continuity and support neighborhood stability.
- **West End:** Westwood's current attendance zone was restored to ensure balanced enrollment.

A comprehensive transportation plan complements these updates—reducing daily bus routes from 986 to 402, cutting average ride times by nearly 60 percent, and increasing the number of students who can walk to school from 6,580 to more than 8,000. Altogether, the *Better Bus Use* strategy is projected to generate approximately **\$5.6 million in annual savings**.

Transportation Plan | Optimizing Bus Use



Academic, Excellence and Student Experience

The Implementation Plan unifies academics, culture, and operations to ensure every student benefits from consistent, high-quality instruction and enrichment opportunities.

Key actions include:

- Standardizing grade bands (K–5, 6–8, 9–12) to create coherent, developmentally appropriate learning environments.
- Launching Teaching and Learning Centers as professional hubs for coaching, planning, and curriculum alignment.
- Expanding STEAM and world-language instruction beginning in Grade 3.
- Implementing the Ron Clark Academy House System in all middle schools to strengthen belonging and culture.
- Introducing an embedded Gifted and Talented model that integrates enrichment into daily instruction across all schools.

Each initiative reinforces the District's commitment to providing equitable access to advanced learning, creativity, and whole-child supports.

Student Experience | Equitable Scheduling + Access



Arts

Structured **progression from K-8** ensures every student experiences both performing and visual arts, with middle-school programs connecting identity, culture, and creativity.



Career Exploration

A structured elective in **Grades 6-8** will connect learning to career readiness, using e-portfolios and community partnerships.



STEAM

Integrated into the **K-8 core curriculum**, expanding access from 15% to 100% of middle-grade students.



World Languages

Starting in Grade 3, students will have continuous exposure through graduation, including heritage language and accelerated pathways.

42

Equity and Inclusion at the Core

The Implementation Plan places targeted emphasis on historically underserved students—African American students, English Learners, students with disabilities and economically disadvantaged—through strategies that guarantee service continuity, strengthen relationships, and promote inclusive practices.

Expanded regional programs and ELD Centers will bring services closer to home, reduce travel time, and ensure every student transitions with support. Accountability measures, including IEP audits, family engagement sessions, and public progress dashboards, will monitor implementation and outcomes at every stage.

Equity in Student Support | Four Core Strategies



**GUARANTEEING
SERVICE CONTINUITY**



**STABILIZING
RELATIONSHIPS**



**INTENTIONAL
COMMUNICATION**



**CULTURAL AND
SYMBOLIC SUPPORTS**

48

Community Engagement and Transparency

The plan reflects two years of extensive engagement, including nine public hearings, community conversations, and thousands of survey responses. PPS will maintain transparency through quarterly updates, short videos, infographics, and a dedicated Future-Ready PPS Transition Page with school-specific timelines and FAQs.

Parent Ambassadors, Student Ambassadors, and Co-Design Teams will continue to ensure that family and student voice remain central to implementation.

Engagement, Outreach, Communications | Strategies



COMMUNITY CONVERSATIONS AND SCHOOL-BASED LISTENING SESSIONS

Building trust through two-way communication that values every voice and perspective.



PARENT AMBASSADORS

Building trust through informed parent voices that bridge families and the District.



CO-DESIGN TEAMS

Designing transitions with families, not for them.



STUDENT VOICE

Students leading the way toward a Future-Ready PPS.



SCHOOL COMMUNITY KICKOFFS

Welcoming families home to their Future-Ready schools.



COMMUNITY SPONSORSHIP AND SCHOOL ADOPTION

New community resources and partnerships that embrace our schools.

63

Do you want to learn more about the Future-Ready Facilities Plan?

Visit our website (linked below) for the latest updates to our FAQs, plan materials, engagement opportunities, and to explore your child's K–12 pathway using the Find My School Search Tool.

Stay connected by following Pittsburgh Public Schools on Facebook, X, Instagram, Bluesky, YouTube, and Vimeo.

[Future-Ready Facilities Plan](#)

Didn't have an opportunity to watch the presentation?

You can view the October 30th presentation below.



Pittsburgh Public Schools

FUTURE-READY

FACILITIES IMPLEMENTATION PLAN

PRESENTATION

Dr. Wayne N. Walters, Superintendent

and the Leadership Team



OCTOBER 30, 2025

[Download Full Slide Presentation](#)

Community Sessions Fall 2025

Help shape the future of Pittsburgh Public Schools!

On Thursday, October 30, 2025, Superintendent Wayne N. Walters presented the Implementation Plan requested by the Board. Board members are now hosting community sessions to gather feedback from their constituents.

Director(s)	Date	Time	Location	QR Code
Yael Silk	Saturday, November 1 st	Sat: 1:30-3 pm (5-minute slots)	Commonplace Coffee 5827 Forbes Avenue Pittsburgh, PA 15217	
	Sunday, November 2 nd	Sun: 10:30-12 pm (5-minute slots)		
Gene Walker & Dwayne Barker	Thursday, November 6 th	6:30 pm	Pittsburgh Project 2801 North Charles Street Pittsburgh, PA 15214	
Gene Walker	Monday, November 10 th	6 pm	Zoom zoom.us/j/99945025274#success	
Emma Yourd & Jamie Piotrowski	Monday, November 10 th	6-7:30 pm	Carnegie Library-Carrick 1811 Brownsville Road Pittsburgh, PA 15210	
Sylvia Wilson	Thursday, November 13 th	6-8 pm	Sterrett 6-8 7100 Reynolds Street Pittsburgh, PA 15208	
Emma Yourd & Jamie Piotrowski	Thursday, November 13 th	12:30-2 pm	Carnegie Library-Brookline 708 Brookline Boulevard, Pittsburgh, PA 15226	
Devon Taliaferro	Thursday, November 13 th	6-8 pm	Obama 6-12 515 North Highland Avenue Pittsburgh, PA 15206	
Emma Yourd & Jamie Piotrowski	Saturday, November 15 th	10:30-12 pm	Carnegie Library-Beechview 1910 Broadway Avenue Pittsburgh, PA 15216	



Try email marketing for free today!