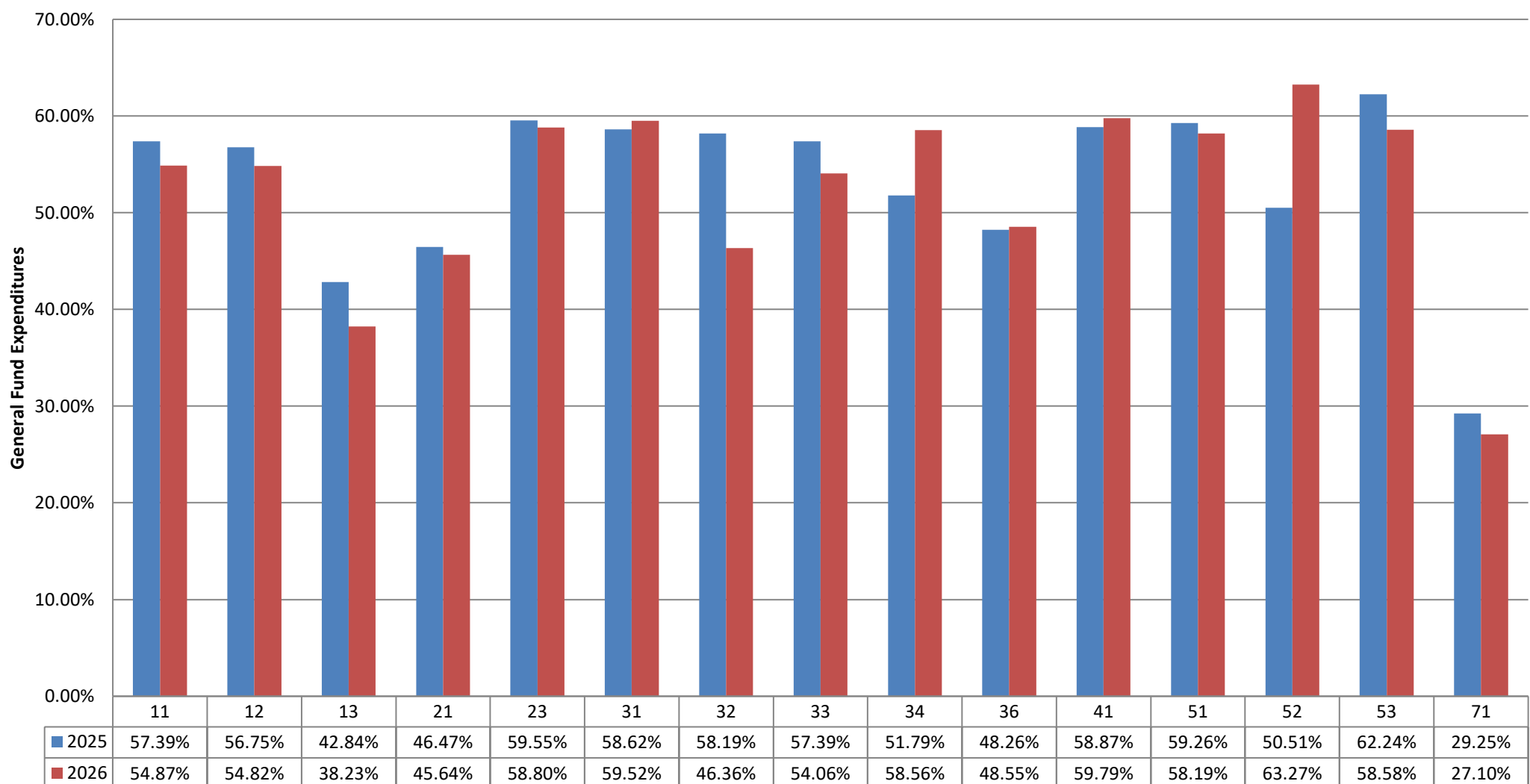


TOMBALL INDEPENDENT SCHOOL DISTRICT
FINANCIAL COMPARISON REPORT
As of January 31, 2026
General Fund, Food Service, and Debt Service Funds
(AMOUNTS IN \$000)

	<u>Budget</u>	<u>Actual</u>	<u>% of Budget Realized / Expended</u>
<u>General Fund Revenues</u>			
Property Taxes and P&I	\$ 121,475	\$ 104,423	86.0%
Co-Curricular Activity	320	542	169.5%
Investment Income	2,506	2,629	104.9%
Rents, Fees, Misc.	88	1,554	1770.5%
State Rev.- Foundation Program	104,195	65,106	62.5%
State Revenue - TRS On-Behalf	12,500	6,803	54.4%
State Revenue - Other Programs	0	0	0.0%
Federal Revenue Programs	1,064	176	16.5%
Total General Fund Revenues	\$ 242,148	\$ 181,233	74.8%
<u>General Fund Expenditures by Function</u>			
11 Instruction	\$ 156,174	\$ 85,692	54.9%
12 Instr. Resource & Media Services	2,642	1,449	54.8%
13 Curriculum Dev./Instr. Staff Development	1,235	472	38.2%
21 Instructional Leadership	5,994	2,735	45.6%
23 School Leadership	12,494	7,346	58.8%
31 Guidance & Counseling Services	7,750	4,613	59.5%
32 Social Work Services	107	50	46.4%
33 Health Services	2,858	1,545	54.1%
34 Pupil Transportation	10,587	6,199	58.6%
36 Co-curr./Extracurr. Activities	5,160	2,505	48.5%
41 General Administration	7,664	4,582	59.8%
51 Plant Maintenance & Operations	22,884	13,316	58.2%
52 Security & Monitoring	3,106	1,965	63.3%
53 Data Processing Services	3,888	2,278	58.6%
71 Leases	379	158	41.7%
95 Juvenile Justice Alt. Ed. Program	14	0	0.0%
99 Other Intergovernmental	1,520	716	47.1%
Total General Fund Expenditures	\$ 244,456	\$ 135,621	55.5%

Budget Targets:

This chart represents the percentage actually expended of the appropriations approved by the Board by Function.



TOMBALL INDEPENDENT SCHOOL DISTRICT
FINANCIAL COMPARISON REPORT
 As of January 31, 2026
 General Fund, Food Service, and Debt Service Funds
 (AMOUNTS IN \$000)

	<u>Budget</u>	<u>Actual</u>	<u>% of Budget Realized / Expended</u>
<u>Food Service Fund Revenues</u>			
Food Sales	\$ 6,842	\$ 3,297	48.2%
State Revenue - TRS On-Behalf	530	169	31.8%
Federal/State Reimbursement	5,455	2,247	41.2%
Total Food Service Fund Revenues	<u>\$ 12,827</u>	<u>\$ 5,713</u>	44.5%
<u>Food Service Fund Expenditures</u>	<u>\$ 12,904</u>	<u>\$ 5,611</u>	43.5%
<u>Debt Service Fund Revenues</u>			
Property Taxes and P&I	\$ 70,695	\$ 61,903	87.6%
Investment Income	805	401	49.9%
State Rev.-Foundation Allocation	6,000	14,314	238.6%
Sale of Bonds	0	1,676	0.0%
Total Debt Service Fund Revenues	<u>\$ 77,500</u>	<u>\$ 78,294</u>	101.0%
<u>Debt Service Fund Expenditures</u>	<u>\$ 77,500</u>	<u>\$ 20,944</u>	27.0%

****Review additional tabs (worksheets) for reconciliations of amendments to adopted revenue and expenditure appropriations.**

