

COMMUNITY VOICES

# SCHOOL BOUNDARIES





---

# WELCOME & INTRODUCTIONS

---

Please share with us your role in the district, schools where you are connected as a staff or a parent, and why you joined this team?

# AGENDA

1

## LAYING THE FOUNDATION

Establishing the roadmap, priorities, and expectations for our boundary revision journey

2

## SEEING THE STORY IN DATA

Reviewing key data sources to understand current realities and future needs.

3

## VOICES AND VISION

Gathering insights, questions, and perspectives to guide our next steps.



Northern Quest  
Resort & Casino

2027

Craig Road

**CRAIG ROAD  
ELEMENTARY SCHOOL**

Hayford Road

Spokane Tribe  
Resort & Casino

Sunset  
Elementary  
School





---

# LAYING THE FOUNDATION

Establishing the roadmap, priorities, and expectations for our boundary revision journey

---

# REBOUNDARY PROCESS

---

## DATA COLLECTION

This step involves gathering enrollment, capacity, demographic, transportation, and program data to establish clear criteria for boundary adjustments.



## COMMUNITY ENGAGEMENT

The district informs stakeholders, forms a representative boundary review team, and solicits meaningful input at key stages of the process.

## SCENARIO DEVELOPMENT

Using collected data and stakeholder input, multiple boundary options are drafted, evaluated against criteria, and refined through public feedback.



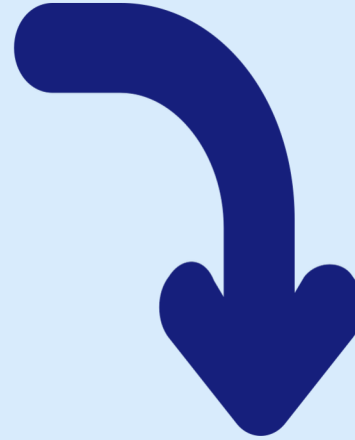
## RECOMMENDATION AND IMPLEMENTATION

A final boundary proposal is recommended by the committee, reviewed and approved by district leadership and the board, and then implemented through coordinated timelines, transition supports, and system updates.



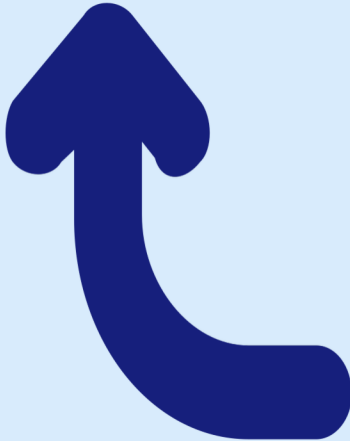
## Boundary Revision Steering Team

- Establish priorities and commitments
- Review and synthesize feedback from community and partner teams
- Select final boundary scenarios
- Develop and refine final presentation materials
- Confirm and approve the final selection

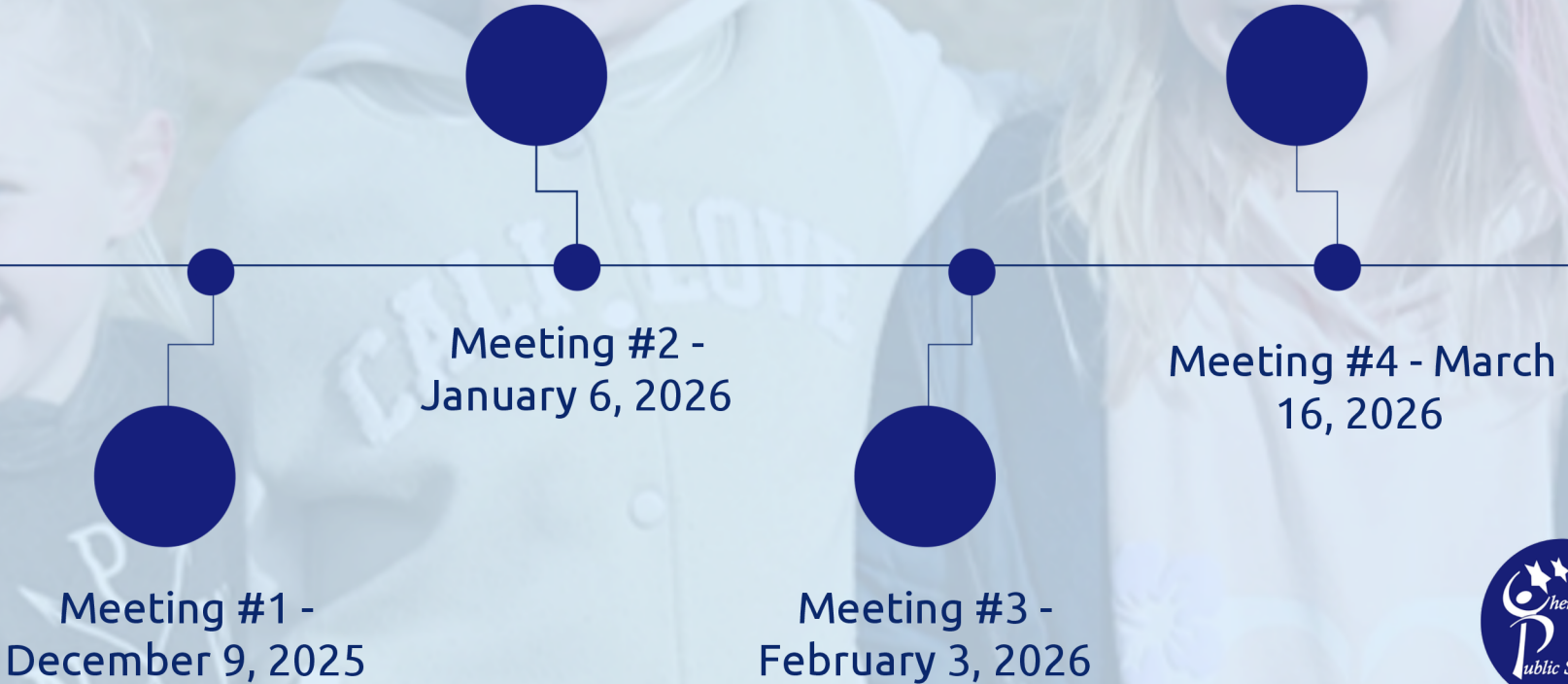


## Boundary Review Community Partners Team

- Learn about and understand the boundary revision process
- Review data related to enrollment, facilities, and demographics
- Examine and refine initial boundary scenarios
- Provide feedback and input on data and draft scenarios
- Discuss and analyze key questions related to boundary changes
- Compare and contrast finalist scenarios
- Participate in prioritization activities to identify preferred scenario
- Review and provide input on the final two scenarios



# REBOUNDARY TIMELINE



# REBOUNDARY TIMELINE



**Meeting #1 -**  
December 9, 2025



**Meeting #2 -**  
January 6, 2026



**Meeting #3 -**  
February 3, 2026



**Meeting #4 -**  
March 16, 2026





# BOUNDARY COMMITMENTS



Minimizing disruption of students' established learning programs

**C**



Maintaining, so far as possible, existing neighborhood groupings

**H**



Adjusting school and class enrollments to match available space

**E**



Coordinating transportation routes with attendance areas

**N**



Making most effective use of fiscal resources

**E**



Achieving efficient deployment of District personnel

**Y**



---

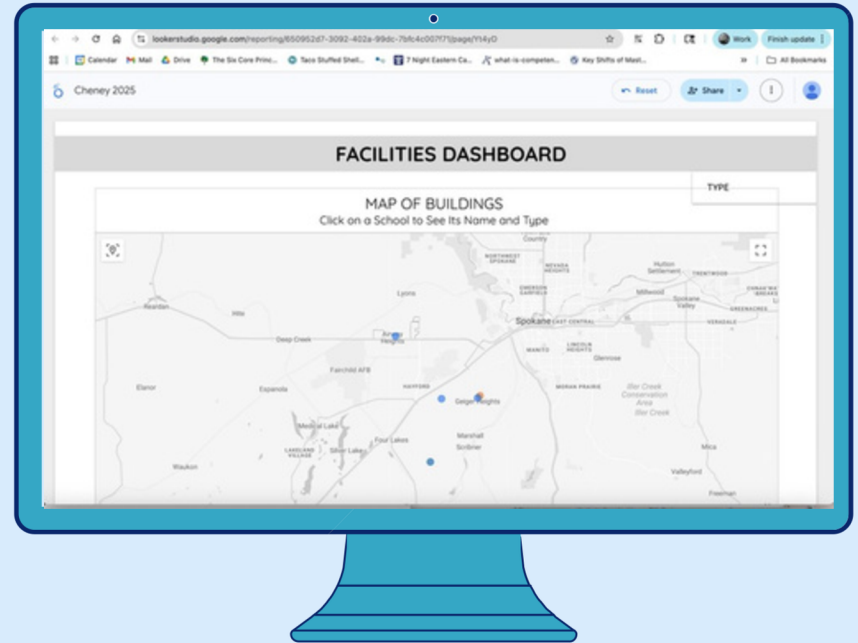
# SEEING THE STORY IN DATA

Reviewing key data sources to understand current realities and future needs

---






# FACILITY DASHBOARD

District facilities overview highlights future enrollment needs and building readiness. Capacity comparisons reveal which elementary schools may face space shortages or underutilization based on projected enrollment.



# STUDENT CAPACITY

---

School	Current Enrollment	Capacity	Current Use
Betz Elementary	471	445	106% 
Salnave Elementary	341	376	91% 
Snowdon Elementary	475	376	126% 
Sunset Elementary	581	486	120% 
Windsor Elementary	486	509	95% 



A snapshot of temporary learning spaces

## PORTABLE CLASSROOMS IN USE

School	Portables	Current Use
Betz Elementary	3	Preschool Special Programs
Salnave Elementary	0	
Snowdon Elementary	3	Classrooms
Sunset Elementary	3	Classrooms Preschool
Windsor Elementary	3	Community Rental



# STUDENT CAPACITY

2025

School	Enrollment	Capacity	Current Use	Goal Use	Goal Enrollment
Betz Elementary	471	445	106%	96%	427
Salnave Elementary	341	376	91%	96%	361
Snowdon Elementary	475	376	126%	96%	361
Sunset Elementary	581	486	120%	96%	467
Windsor Elementary	486	509	95%	96%	489
Craig Road Elementary	-	500	-	96%	480



# TRANSPORTATION HIGHLIGHTS



## BUSING & ROUTES

- Students living south of Highway 2 are currently bussed to Snowdon Elementary.
- There are multiple large apartment complexes north of Highway 2



## WALK ZONE CHALLENGES

- There is a 1-mile walk zone, but:
  - Multiple apartment complexes fall within that zone.
  - Due to lack of sidewalks, those students are still bussed.



## ROUTE & RIDERSHIP STATS

- High ridership exists at both Sunset and Snowdown Elementary.
- The district runs 42 routes, all 100+ miles each.
- Buses travel approximately 5,000 miles per day.
- Salnave Elementary route staging takes 10-15 minutes before student pickup.



The new school location was strategically chosen to be near student dense areas.

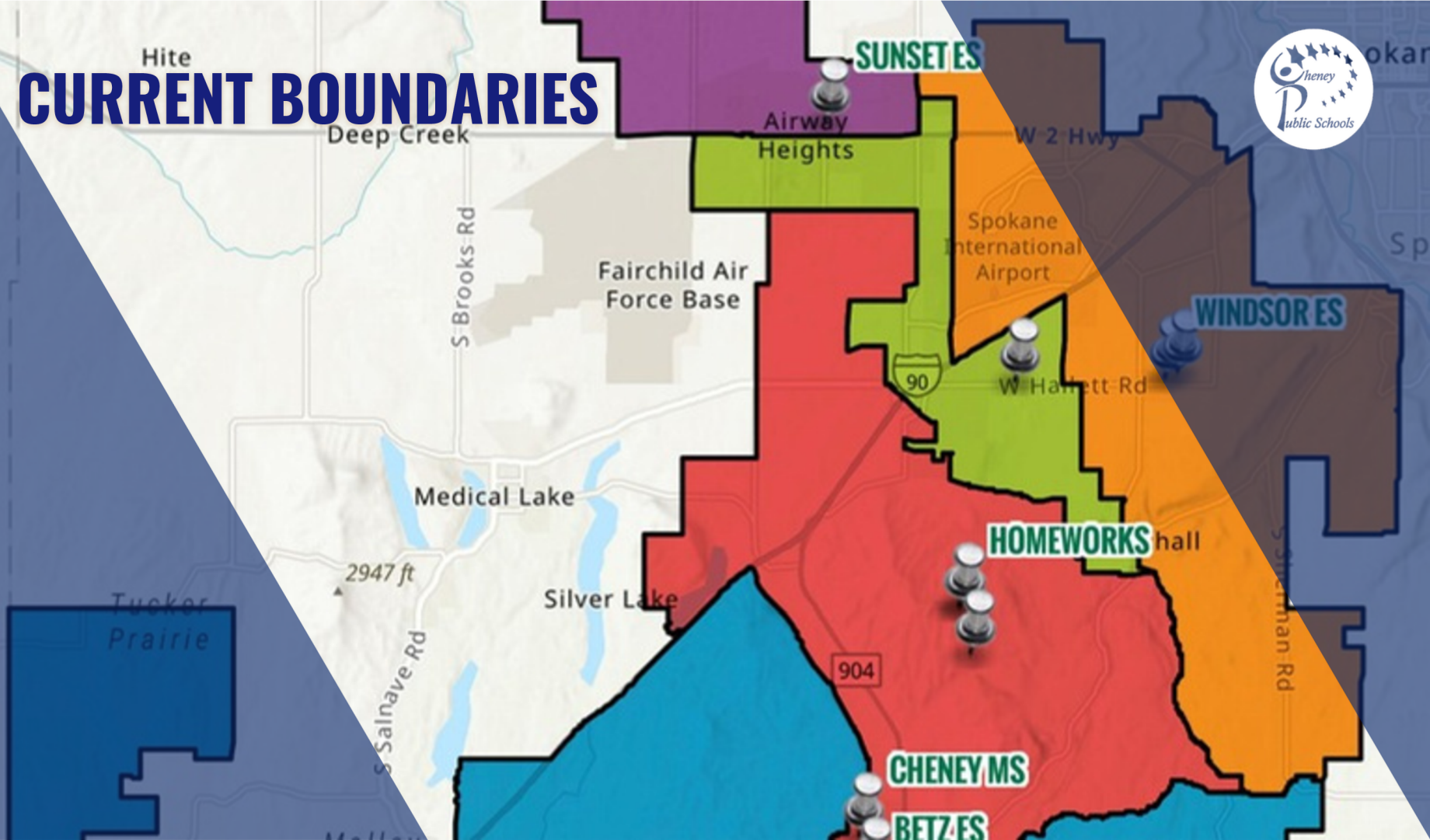


# BOUNDARY ACTIVITY

Team #1	Team #2	Team #3	Team #4	Team #5
Alvin Chak	Karl Doran	Jennifer Cantrell	Ginia "Beth" Guest	Amanda Evans
Melanie Kilgore	Keri Smith	Nicole Hart	Laura Slotemaker	Luke McCorkel
Taylor Pfaff	Maria Seeberger	Samantha Ward	Sayde Lowe	Shayna Davis
Christopher Fischer	Sarah Cox		Teresa McCorkel	Kara Fischer
Rickie Barton		Vladlena Godovanny	Matt Ziegenfuss	
				Anastasiia Sherstoboieva



# CURRENT BOUNDARIES



Hite

Deep Creek

SUNSET ES

Airway Heights

W 2 Hwy

Spokane International Airport

WINDSOR ES

Fairchild Air Force Base

S Brooks Rd

90

W Hallett Rd

Medical Lake

HOMEWORKS hall

2947 ft

Silver Lake

Tucker Prairie

904

S Salnave Rd

CHENEY MS

BETZ ES

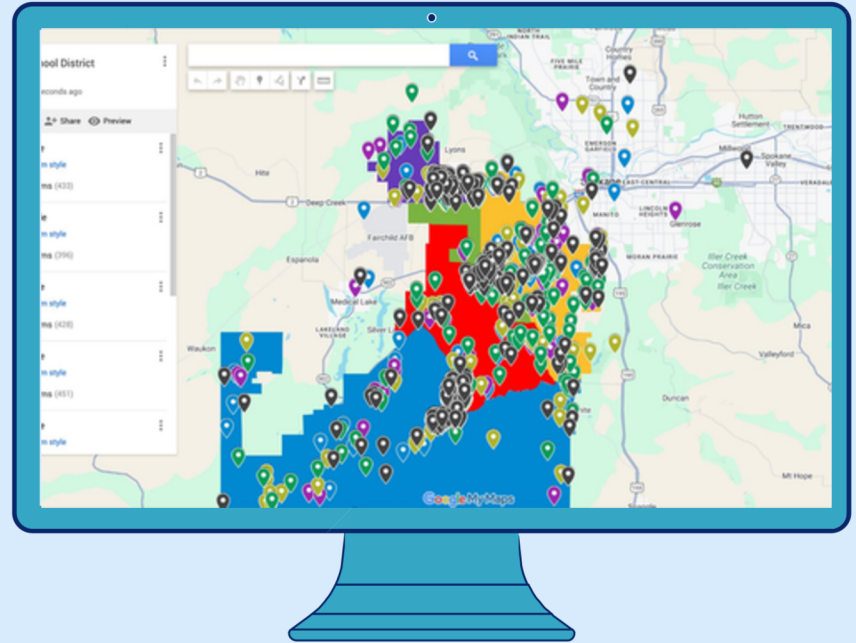
# TABLETALK

**What other neighborhood realities, challenges, or facts should we take into account as we move forward?**



# STUDENT GEOCODING

Uses student geocoding to visualize residential distribution across the district. Highlights future enrollment needs, program needs, and patterns.





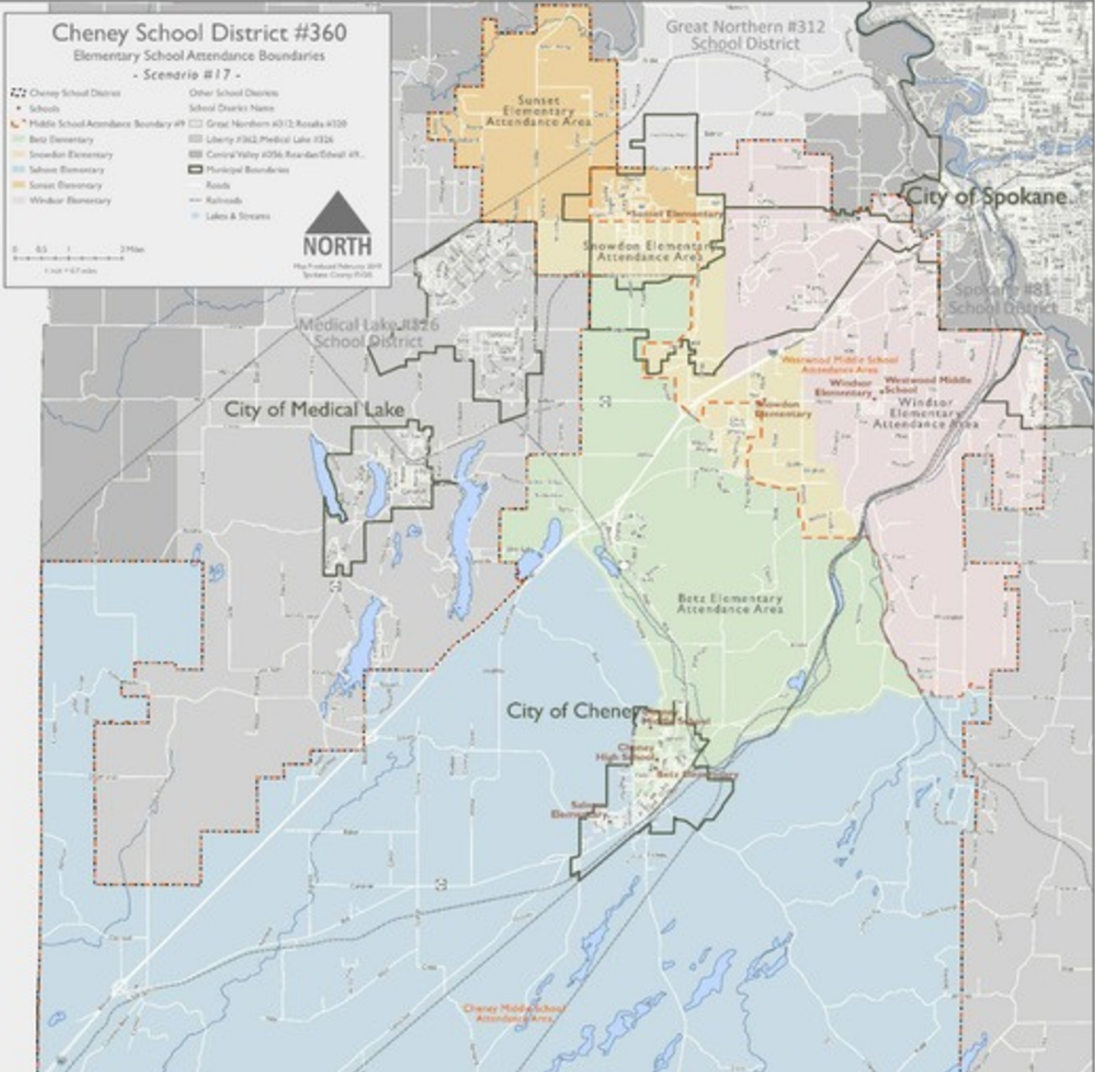
---

# VOICES AND VISION

Gathering insights, questions, and perspectives to guide our next steps

---

# BOUNDARY ACTIVITY



# TABLE TALK

---



## DATA NEEDED

Looking ahead to our next meeting, what specific information, or data would be most helpful for you to have to make more informed recommendations?



**January 6, 2026**  
**6:00 - 8:00 pm**  
**Cheney High School**



---

## NEXT MEETING

- Review and strengthen draft scenarios together
  - Collect and integrate feedback to enhance each scenario
  - Facilitate thoughtful dialogue around key guiding questions
-