



# ISL

## THE YEAR IN REVIEW



A large crowd of people, seen from an aerial perspective, has gathered on a green field to form a large peace symbol. The symbol is composed of many small individuals, each holding a small object, likely a flower, which together create the colors of the symbol. The background is a solid green color with faint white lines, possibly representing a soccer field. The text "Education for a Better World" is overlaid in the center of the image.

**Education for a Better World**

# IB COMMUNICATORS

## Celebrating Curiosity, Collaboration & Action

Each year, the PYP Exhibition (PYPx) represents the culmination of the IB Primary Years Programme—a significant milestone in every Grade 5 learner's journey.

As a student-led and inquiry-based experience, the PYP Exhibition invites learners to explore real-world issues they are passionate about, develop a deep understanding of their chosen topics and take meaningful action that reflects their learning. Along the way, they build resilience, creativity and confidence—essential skills for their future as lifelong learners.

This year, our Grade 5 students amazed us with their thoughtful and innovative projects. From leading initiatives to educate others, to championing sustainability and even advocating for a school dog at ISL, their work reflected not only academic growth but also empathy, courage and a strong sense of responsibility.

The PYP Exhibition truly showcased their development as **compassionate, knowledgeable and action-oriented communicators** who are ready to make a difference—within our school, our community and the wider world.



# IB INQUIRERS

## Empowering Young Explorers Through Nature

In the Primary Years Programme, Nature-based learning is a powerful way to nurture curiosity, exploration and environmental awareness. From **Foundations through Grade 5**, students take part in meaningful outdoor experiences that spark wonder and deepen learning.

Through hands-on inquiry—such as gardening, outdoor experiments, nature walks, camping and hiking—learners develop critical thinking, problem-solving skills and a stronger connection to the natural world.

These experiences encourage transdisciplinary learning, supports well-being and empowers students to see themselves as responsible global citizens who care for both people and the planet.

By engaging with nature, our learners develop **curiosity, sustainability awareness and a lifelong appreciation for the environment**. Nature-based learning enriches our curriculum extending it beyond just the traditional classroom and nurtures the holistic well-being of every child.



# Growing Stronger Through Achievement and Experience

## STEM (**Science | Technology | Engineering | Mathematics**)

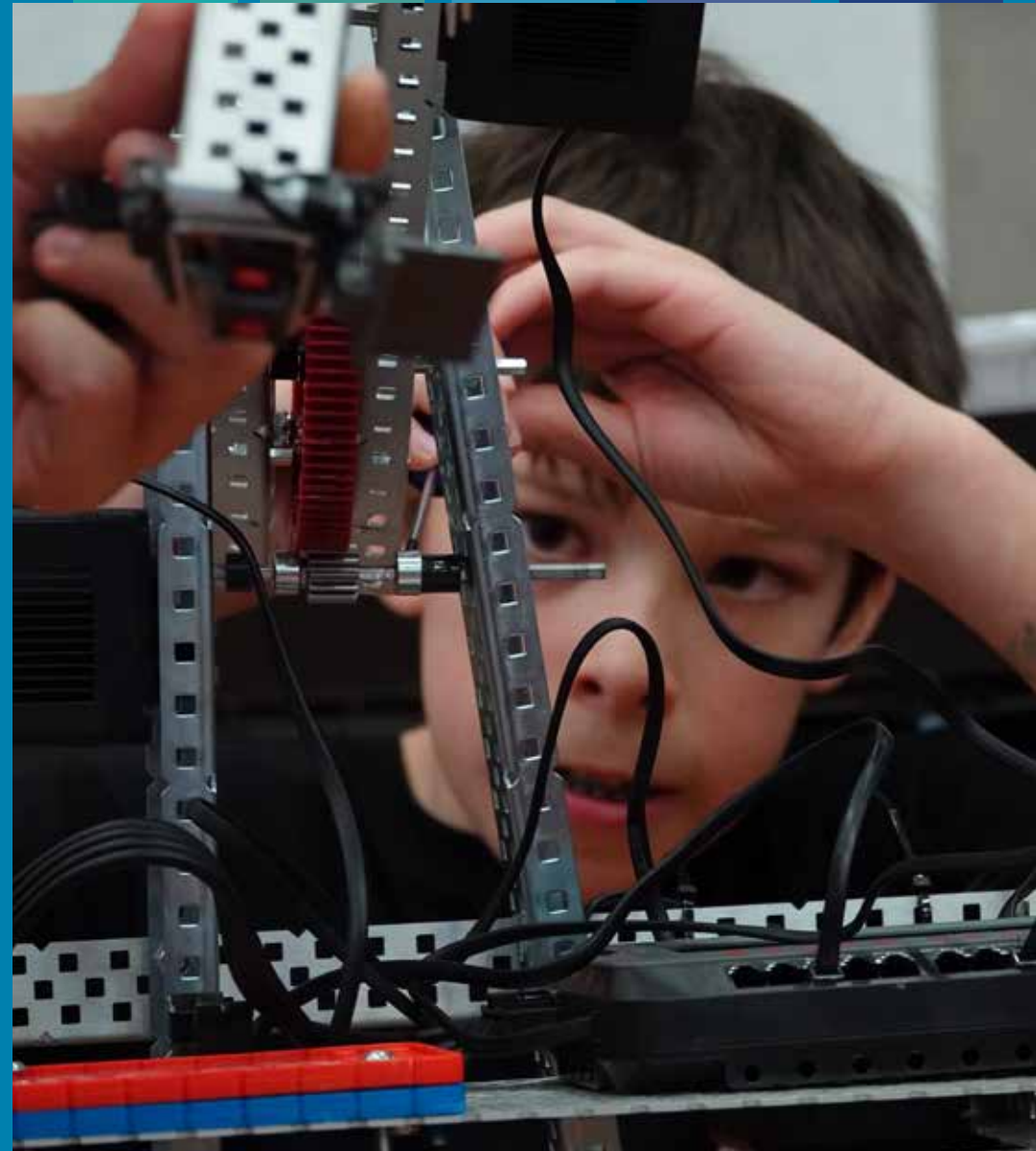
has been thriving at ISL with students excelling in robotics, mathematics, science, STEM Racing and innovation. At the LYRC Robotics Finals in Luxembourg, our teams proudly placed third and fifth, also winning the Design Award for best robot design. Earlier in the year, ISL hosted the launch of STEM Racing in Luxembourg 2024, where students from across the country designed, built and raced miniature F1 cars, gaining hands-on experience with engineering, teamwork and advanced technology.

Innovation was also at the forefront in artificial intelligence, with ISL earning recognition among the top finalists in a prestigious AI competition organized by the University of Luxembourg. In mathematics, our students shone in the UKMT Senior Challenge, the Olympiade Mathématique Belge, and the University of Luxembourg Math Day, bringing home multiple Silver and Gold awards.

The sciences were equally strong with excellent participation in the Luxembourg Science Olympiads. ISL students advanced through the Biology, Physics, and Chemistry competitions, reaching several final rounds and showcasing their skills at the national level.

From designing robots to solving complex math problems and tackling scientific challenges, **ISL students continue to be strong thinkers embracing curiosity, creativity, and innovation**—living proof of STEM continuing to inspire and shape the future.

# IB THINKERS



# Bridging Generations Through Community

At ISL, we continue to strengthen the bonds that make our school community so unique, celebrating both tradition and innovation through meaningful cross-grade experiences.

What began in 2023 as the **KG/G12 Pairings** has continued to be a heartwarming highlight of the year. In this beloved tradition, the senior class of 2025 proudly escorted our youngest learners—the Kindergarten Class of 2037—onto the school pitch. This powerful moment symbolized a bridge between the present and the future, uniting the beginning and culmination of the ISL journey. It was a celebration not only of school spirit but also of the values of mentorship, belonging, and continuity that define our community.

This spirit of connection was further exemplified during the **Grade 9 and Grade 3 Art Day**. Lower and Upper School Arts teachers joined forces to host a morning of creativity, collaboration and leadership. Grade 9 students led engaging mini-workshops in various art forms, mentoring Grade 3 students as they explored a shared artistic stimulus. This event highlighted the power of peer mentorship and the joy of learning together across age groups. The resulting artwork, now displayed in a dedicated gallery, is a testament to the students' creativity and the strength of ISL's arts program.

Together, these initiatives reflect our ongoing commitment to fostering a caring, connected, compassionate and vibrant school culture—where every student, from Early Years to Grade 12, feels seen, supported and inspired.

# IB | CARING



As Global Citizens, our students serve as global stewards—taking responsibility for protecting and sustaining the planet and its resources for current and future generations.

### **Sustainability Projects - Learning Through Action**

This year, our students demonstrated their commitment to global citizenship and stewardship through several impactful sustainability initiatives.

The **Greenhouse Project** reached a milestone with a new facility, giving students hands-on opportunities to engage in gardening, sustainability practices and environmental learning.

Guided by the ISL Energy Vision Task Force, students also led the **Solar Panel Project**, presenting their plan to the ISL Board and securing a grant from the Ministry of Education. The panels generate clean energy annually, showing how student-led initiatives can make a tangible difference.

The **OUVRE Grant Changemaker Project** showcased student creativity and collaboration. Grade 8 students Beatrice, Isabelle and Veronika envisioned transforming a patch of campus into a thriving biodiversity haven. Supported by community partners and the school's Nature-Based Learning and Maintenance Teams, their project received a generous national grant and has become a model for student-driven action.

These initiatives illustrate how the IB nurtures the whole child, fostering knowledge, skills, values, empathy and the courage to take meaningful action in their communities and the world.



# IB | OPEN-MINDED

## Recognizing Diversity at ISL

Each year, Diversity Week at ISL comes alive as a vibrant and meaningful celebration of community, inclusion and collective learning—placing Diversity, Equity, Inclusion and Justice (DEIJ) at the heart of our educational experience.

Over the week, our students, educators and staff engaged in a variety of activities designed to honour and explore the richness of diversity within the school community. Through collaboration and thoughtful dialogue, participants forged connections and deepened their understanding of one another.

Highlights included cross-grade buddy reading sessions and a powerful shared learning experience led by Handicap International. This thought-provoking activity nurtures empathy and encourages students to develop broader, more inclusive perspectives toward people with disabilities and other vulnerable communities.

Everyone is Unique,  
Everyone is Welcome,  
Everyone Belongs,  
Everyone deserves Fair  
Treatment



# IB | BALANCED



We encourage students to find strength through balance and harmony, nurturing well-being for themselves and the world around them.

## Residential Learning in Nature

At ISL, we encourage students to find strength through balance and harmony—nurturing well-being not only for themselves, but also for the world around them. Beginning in Grade 3, **our residential experiences** form an essential part of our nature-based learning programme. We believe education should reach far beyond the classroom, extending into forests, mountains and rivers, where students can truly connect with nature and grow as whole individuals.

Why residential experiences? Because it cultivates connection, well-being, curiosity, and confidence—while **fostering environmental stewardship** and offering a healthy balance away from technology. In these spaces, students rediscover the joy of adventure, collaboration and discovery, making memories that last a lifetime.

### The Benefits:

- Develop environmental awareness & stewardship
- Engage in hands-on, real-world learning
- Build independence, confidence, and resilience
- Strengthen teamwork and social skills
- Spark creativity, problem-solving, and curiosity
- De-stress and recharge in a tech-free environment

Each journey is carefully designed to support **physical, mental, social, and emotional development**, while inspiring a lifelong respect for the environment. Students return not only with new skills, but with deeper resilience, stronger friendships and a lasting sense of wonder. Through these experiences, students don't just learn about nature—they learn with nature, finding harmony, purpose and joy in the process.

Embracing courage and resilience, our students rise to new challenges with confidence and determination.

# IB | RISK-TAKERS

## Movement Composition - A Celebration of Learning

In February, the Lower School showcased their learning in a joyful PE Assembly focused on Movement Composition. Each class presented original performances that combined coordination, rhythm and expressive movement, offering families and peers a glimpse into **how creativity and physical education connect in the IB Primary Years Programme.**

This unit encouraged students to embrace the IB Learner Profile attribute of being risk-takers. Performing on stage required confidence and courage, as students explored how movement can be used to communicate ideas, tell stories and evoke emotion. Working both independently and in groups, they demonstrated strong collaboration skills while developing balance, timing and spatial awareness.

The assembly highlighted how **PE nurtures the whole child-building** not only physical skills, but also creativity, communication and resilience. By taking risks in a supportive environment, our students discovered the power of expression through movement and celebrated learning as a shared experience.



If I could tell my younger self one thing, it would be: don't limit yourself. Try exploring different areas to see where they lead. -Former ISL Student

### Alumni Mentoring Programme - Nurturing Reflective Learners

The ISL Alumni Mentoring Programme exemplifies the IB Reflective learner profile by encouraging students to engage in meaningful conversations with former graduates. Alumni share personal insights from their academic and career journeys, offering students the opportunity to reflect on their own goals, strengths and learning paths. Through this exchange, students develop **self-awareness and thoughtful decision-making**—key qualities of reflective, lifelong learners.

Each year, the Alumni Mentoring Programme grows stronger. This year alumni from 2014–2022 returned to guide Grade 10 students on their IB course selection, emphasizing adaptability and learning from experience. Meanwhile, recent graduates shared practical advice with Grade 12 students on managing their final year, including time management and seeking support. These connections embody the IB Reflective learner, **inspiring students to thoughtfully consider their own paths.**

# IB | REFLECTIVE



# IB | KNOWLEDGEABLE

## Discovering Knowledge Through Creativity

At ISL, we believe that **students develop as knowledgeable learners by engaging with the world through creativity.** Some notable highlights of this academic year were the OCL (Orchestre de Chambre du Luxembourg) Collaboration and AMIS Music Festivals.

Launched in 2021 with the OCL, the String Quartet Composition Project gives young composers the chance to explore repertoire, experiment with techniques, receive feedback from professional musicians and present their original works in concert. On 10 February 2025, ISL was honoured to welcome H.R.H. Crown Princess Stéphanie of Luxembourg, who visited our Grade 7 students to hear their compositions performed.

In Lower School over 25 ISL students from Grade 5 upwards successfully auditioned and were invited to participate at AMIS Music Festivals. Over three days, they worked with professional conductors and peers from international schools, refining their repertoire and culminating in inspiring Gala Concert performances.

This year two of our High School students demonstrated how discovering knowledge through creativity can open doors both inside and outside the classroom. Michal (G11) and Harald (G10) took their passion for music beyond the school walls, performing as soloists with the Orchestre de Chambre de Luxembourg (OCL) and transforming artistic exploration into meaningful learning. Their achievements highlight how creativity, curiosity and dedication come together to inspire growth and build lasting confidence.

Through these experiences, ISL students are encouraged to **connect ideas, explore cultures, and broaden their understanding**—developing as reflective, creative and truly knowledgeable learners.



MISSION STATEMENT

**We ensure  
that everyone  
in our  
community  
becomes  
inspired,  
resilient  
& passionate  
about achieving  
what matters,  
anywhere  
in the  
world.**

VISION STATEMENT

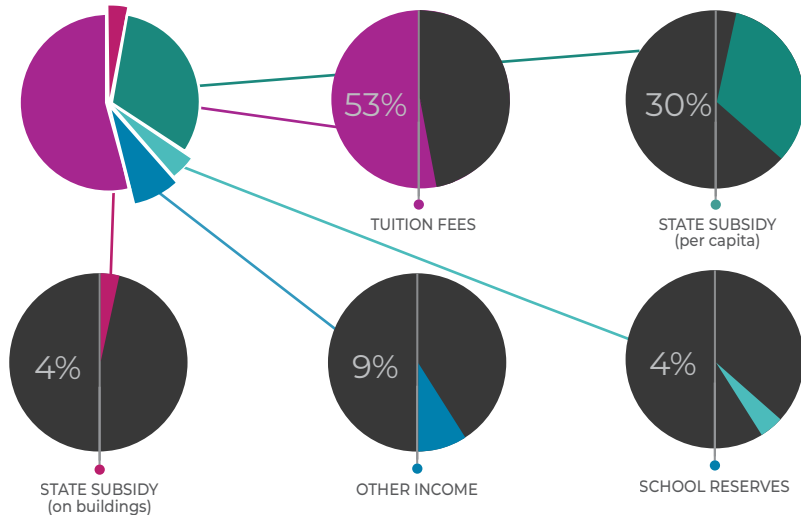
ISL is a leader in international education, known for academic excellence, personal development, extraordinary teaching, and diverse learning experiences.

Our school shall bring to life the best of Luxembourg and international education-

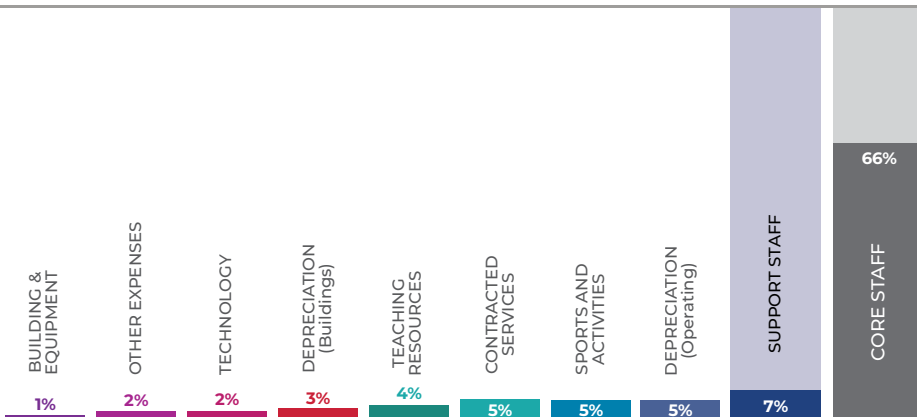
**CREATIVITY,  
INNOVATION,  
INCLUSION,  
GLOBAL-MINDEDNESS  
& SUSTAINABILITY**

# FINANCIALS

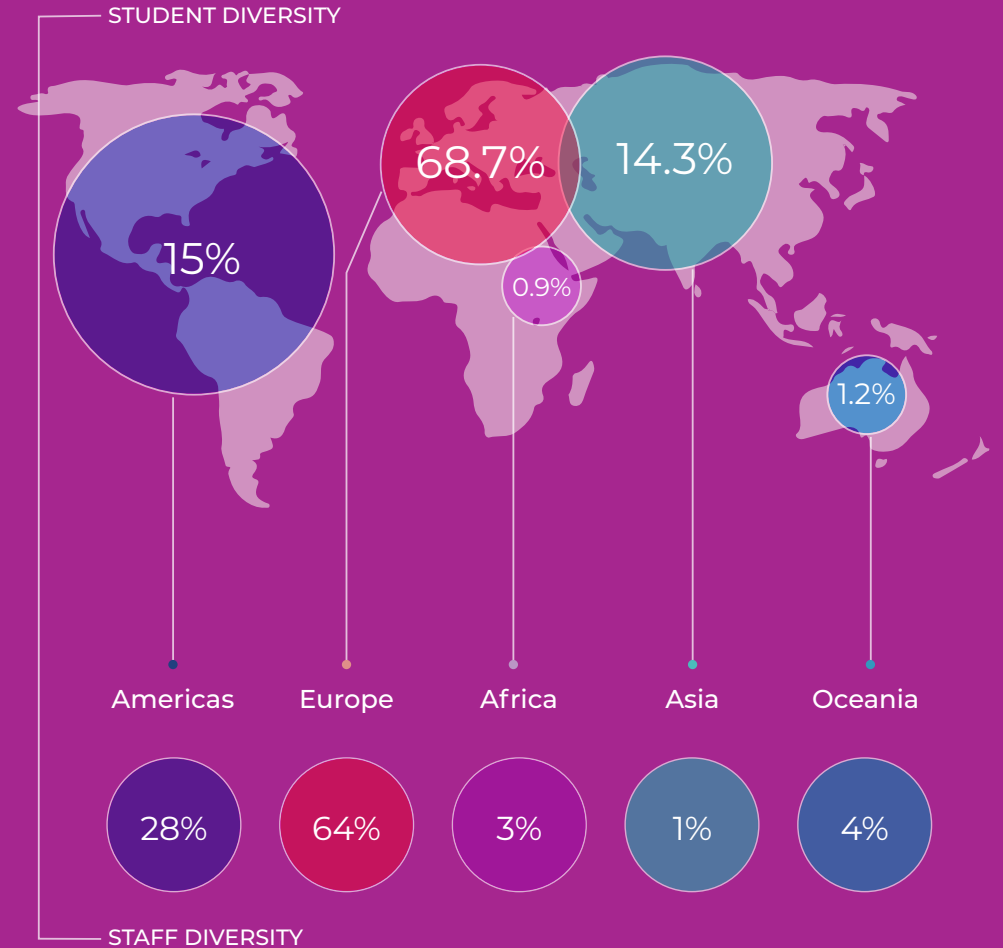
## OPERATING INCOME SUMMARY



## OPERATIONAL EXPENSES SUMMARY



# NATIONALITIES



# UNIVERSITY DESTINATIONS

55%  
EUROPE

9%  
GAP YEAR

10%  
N.AMERICA

26%  
UNITED KINGDOM

## AUSTRIA

MCI Innsbruck

## BELGIUM

KdG University of Applied Sciences & Arts  
KU Leuven  
Université Catholique de Louvain  
Université Libre de Bruxelles  
Université de Namur  
Vrije Universiteit Brussel

## CANADA

Bishop's University  
Concordia University  
Dalhousie University  
McGill University  
Mount Royal University  
University of Montreal

## CZECHIA

Charles University

## CYPRUS

University of Nicosia

## DENMARK

Danish Sports Academy  
European Film College  
University of Southern Denmark

## FINLAND

Aalto University

## FRANCE

American University of Paris  
CentraleSupélec  
Cours Florent  
EDHEC Business School  
École 42  
ESCP Business School  
ESMOD

## FRANCE cont.

ESSEC Business School  
Emlyon Business School  
Prépa Lyon

## HUNGARY

Semmelweis University

## IRELAND

Institute of Art, Design & Technology,  
Dublin  
Trinity College Dublin  
University College Cork

## ITALY

Bocconi University  
Humanitas University  
LUISS Guido Carli University  
Nuova Accademia di Belle Arti (NABA)

## LUXEMBOURG

Luxembourg Flight Training Academy  
UBI Business School  
University of Luxembourg

## MALTA

European Forensic Institute

## NETHERLANDS

Amsterdam University College  
Delft University of Technology  
Erasmus University College  
Erasmus University Rotterdam  
European School of Physiotherapy  
Fontys University of Applied Sciences  
Leiden University College The Hague  
Maastricht University  
Rotterdam School of Management  
The Hague University of Applied Sciences  
Tilburg University  
TU Eindhoven

## NETHERLANDS cont.

University College Maastricht  
University College Utrecht  
University of Amsterdam  
University of Groningen  
Wageningen University

## NORWAY

BI Norwegian Business School

## SPAIN

CIS Madrid  
Comillas Pontifical University  
EADA Business School  
EU Business School  
Esade Business School  
IE University  
ISDE Business Law School  
Pompeu Fabra University  
Ramon Llull University  
Saint Louis University Madrid  
TAI University School of Arts  
Universidad Europea de Madrid  
University of Navarra

## SWEDEN

Malmö University

## SWITZERLAND

IFM Business School  
University of Zurich  
Zurich University of the Arts

## UNITED KINGDOM

Abertay University  
Cardiff University  
City, University of London  
Durham University  
Falmouth University  
Hartpury University  
Imperial College London  
King's College London  
Loughborough University  
Norwich University of the Arts  
Queen's University Belfast

University College London (UCL)

University for the Creative Arts  
University of Bath  
University of Edinburgh  
University of Essex  
University of Exeter  
University of Leeds  
University of Newcastle  
University of Oxford  
University of Reading  
University of Southampton  
University of St Andrews  
University of the Arts London

## UNITED KINGDOM cont.

University of Warwick  
University of West London  
University of the West of England, Bristol  
University of Winchester  
University of York

## UNITED STATES

Brown University  
Carnegie Mellon University  
Marymount Manhattan College  
Northeastern University  
Northwestern University  
Point Park University  
Purdue University  
San Diego State University  
United States Air Force Academy  
University of Chicago  
University of San Diego  
University of Vermont  
Wake Forest University

INTERNATIONAL SCHOOL OF LUXEMBOURG  
36 Boulevard Pierre Dupong  
L-1430 Luxembourg



[WWW.ISLUX.LU](http://WWW.ISLUX.LU)  
© NOVEMBER 2024