

Matawan Borough Recreation Commission Announces

APPROVED FOR DISTRIBUTION

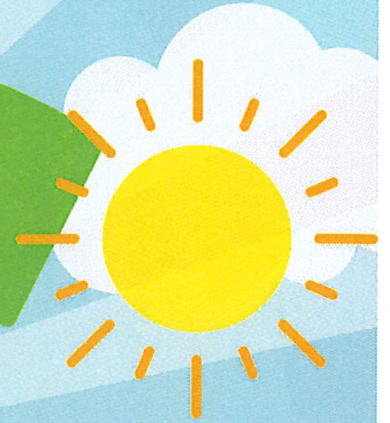
Matawan-Aberdeen Regional School District

Silvia Lee

Authorized Signature

SUMMER REC CAMP 2026

For Kids K-6th Grades



NEW THIS YEAR

**Sports Activities
Coordinator**
for mini clinics & games

Snapology 4-6grds
Creature Creator
Robotics & Coding
More Special Events



BACK AGAIN

Obstacle Challenge
Kickball tournament
Snapology 1-3grds
Pizza Party
Arts 'n Crafts

SPECIAL EVENTS

Water Days
Ices/Ice Cream Days
Assemblies
Movies
Theme Days
Trips

JUNE 29 - AUG 7

RAVINE DRIVE ELEMENTARY SCHOOL
M-F, 9 AM - 1 PM

Matawan Resident
Registration opens
3/18 at 9:00 am
\$650 per child

Non-Resident
Registration opens
3/23 at 9:00 am
\$750 per child

Registration Link and QR code will be posted on 3/18 at 9 am on our FB (Borough of Matawan), Instagram (@MatawanBorough), and matawanborough.com