

MEMBERSHIP
October 1ST, 2025

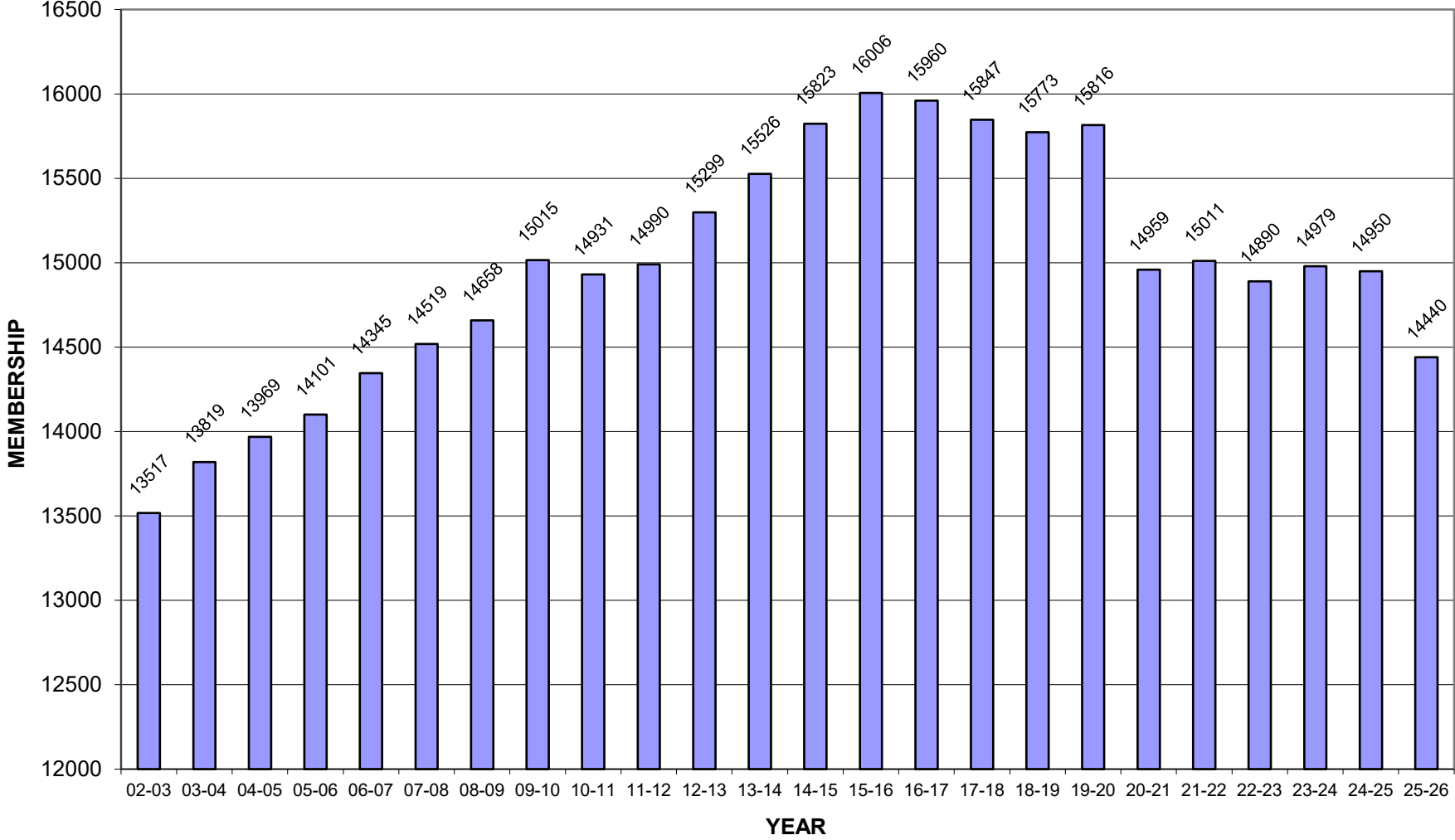
GRADE	Andersen	Boevers	Cedar Ridge	Clark	Darnaby	Grove	Jarman	Jefferson	McAuliffe	Moore	Ochoa (Briarglen)	Peters	Rosa Parks	6th/7th Grade Center	8th Grade Center	9th Grade Center	HS	TOTAL
P3 (Sp. Ed.)	0	0	0	0	0	0	0	0	0	0	0	0	27					27
PK	44	41	43	44	63	46	44	44	44	44	87	22	101					667
KG	40	61	42	59	83	68	82	79	61	36	124	47	68					850
1ST	54	44	64	68	79	78	70	68	63	56	151	42	79					916
2ND	47	55	64	66	82	88	76	86	76	82	146	61	100					1029
3RD	48	69	57	67	88	78	96	88	85	68	146	69	87					1046
4TH	57	73	71	66	92	92	93	79	81	69	177	63	80					1093
5TH	65	70	64	64	93	83	96	81	77	69	127	65	90					1044
6TH	0	0	0	0	0	0	0	0	0	0	0	0	0	1105				1105
7TH	0	0	0	0	0	0	0	0	0	0	0	0	0	1042				1042
8TH	0	0	0	0	0	0	0	0	0	0	0	0	0	0	1022			1022
9TH	0	0	0	0	0	0	0	0	0	0	0	0	0	0	0	1122		1122
10TH	0	0	0	0	0	0	0	0	0	0	0	0	0	0	0	0	1152	1152
11TH	0	0	0	0	0	0	0	0	0	0	0	0	0	0	0	0	1128	1128
12TH	0	0	0	0	0	0	0	0	0	0	0	0	0	0	0	0	1174	1174
13TH	0	0	0	0	0	0	0	0	0	0	0	0	0	0	0	0	23	23
SITE TOTAL	355	413	405	434	580	533	557	525	487	424	958	369	632	2147	1022	1122	3477	14440
Special Education																		
AUT	22	7	24	2	8	42	26	23	7	22	36	11	40	34	17	17	62	400
DD	1	0	0	1	0	1	0	1	0	0	1	5	0	1	0	0	0	11
EMN	0	0	1	1	0	0	1	1	2	3	0	0	0	4	2	4	13	32
HI	0	1	1	1	4	0	2	2	1	2	3	0	2	9	3	1	12	44
ID	2	1	3	1	0	4	6	4	3	0	11	0	1	15	12	15	49	127
MD	3	0	3	0	0	2	2	0	0	0	5	0	0	1	0	4	8	28
OHI	11	1	10	6	21	6	17	9	12	10	16	5	16	93	30	34	99	396
OI	1	0	0	0	2	0	0	2	0	0	1	0	0	2	0	0	0	8
SLD	10	15	4	8	6	11	11	8	10	1	35	7	7	191	82	84	281	771
SLI	20	24	21	22	42	25	30	20	25	25	20	24	34	27	3	0	0	362
TBI	0	0	0	0	0	0	0	0	0	0	0	0	0	1	0	0	1	2
VI	1	0	0	0	0	1	1	4	0	0	0	1	0	1	0	0	4	13
TOTAL	71	49	67	42	83	92	96	74	60	63	128	53	100	379	149	159	529	2194

SITE ENROLLMENT
October 1ST, 2025

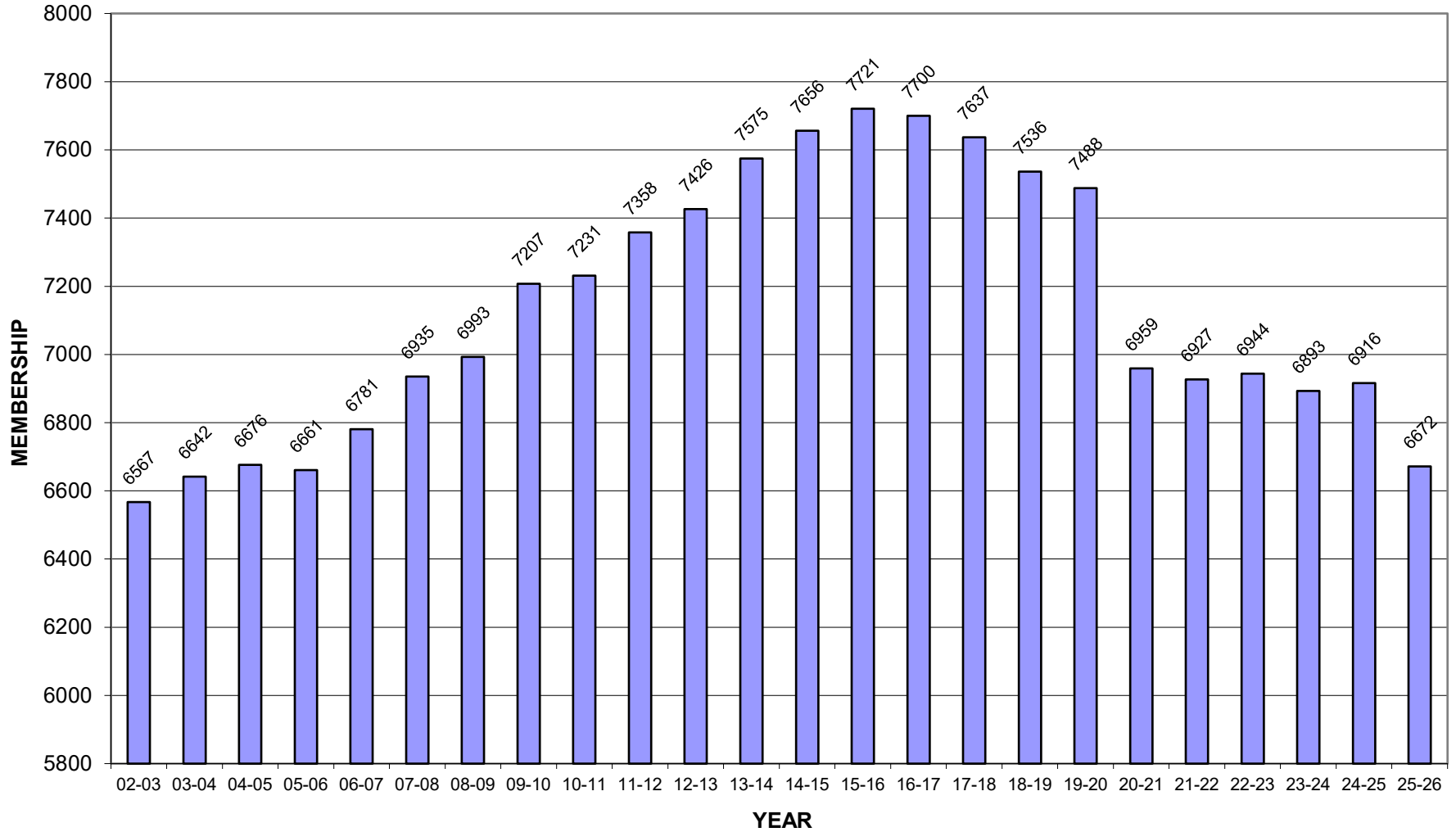
SCHOOL	02-03	03-04	04-05	05-06	06-07	07-08	08-09	09-10	10-11	11-12	12-13	13-14	14-15	15-16	16-17	17-18	18-19	19-20	20-21	21-22	22-23	23-24	24-25	25-26
Andersen	519	531	530	567	549	505	475	477	458	469	463	477	466	463	429	441	459	489	410	400	388	385	348	355
Boevers	604	659	682	656	426	442	481	552	562	539	555	558	592	580	575	612	609	468	418	420	434	433	433	413
Cedar Ridge	424	580	554	529	545	566	591	564	551	575	548	518	504	500	482	479	506	470	447	417	431	458	419	405
Cedar Ridge CL	176	0	0	0	0	0	0	0	0	0	0	0	0	0	0	0	0	0	0	0	0	0	0	0
Clark	178	0	0	659	702	776	556	604	603	564	623	638	609	659	672	696	674	449	448	455	403	429	448	434
Clark CLC	467	557	615	0	0	0	0	0	0	0	0	0	0	0	0	0	0	0	0	0	0	0	0	0
Darnaby	514	490	538	488	564	538	571	572	533	638	667	647	622	610	640	651	643	595	531	566	568	550	590	580
Grove	575	612	615	600	590	621	575	628	606	582	602	611	625	636	581	543	552	567	540	549	548	558	552	533
Jarman	590	608	639	607	603	606	559	520	556	584	582	601	600	591	630	583	551	621	621	607	614	533	575	557
Jefferson							473	515	535	547	526	576	558	554	568	545	579	583	526	543	578	576	574	525
McAuliffe	656	754	634	710	607	630	518	557	630	648	666	705	593	621	655	661	607	570	566	499	497	499	479	487
Moore	626	649	652	654	578	596	470	488	506	538	488	482	588	597	568	553	511	512	482	511	520	489	453	424
Ochoa (Briargler)	579	625	615	576	576	589	538	542	541	517	525	553	600	620	612	546	560	1014	962	957	907	910	968	958
Peters	507	577	602	615	584	587	574	567	543	526	512	500	528	496	455	463	441	420	348	401	434	422	430	369
Peters CLC	152	0	0	0	0	0	0	0	0	0	0	0	0	0	0	0	0	0	0	0	0	0	0	0
Rosa Parks					457	479	612	621	607	631	669	709	771	794	833	864	844	730	660	602	622	651	647	632
SUBTOTAL	6567	6642	6676	6661	6781	6935	6993	7207	7231	7358	7426	7575	7656	7721	7700	7637	7536	7488	6959	6927	6944	6893	6916	6672
6/7th Grade	2103	2152	2194	2156	2210	2137	2121	2248	2240	2197	2266	2272	2226	2322	2306	2298	2369	2449	2332	2241	2182	2178	2123	2147
8th Grade	1018	1059	1091	1132	1109	1139	1137	1054	1101	1092	1168	1126	1205	1173	1174	1197	1140	1218	1168	1223	1122	1185	1100	1022
IHS (9-10)	2007	2108	2156	2220	2308	2264	2325	2343	2213	2178														
HS (11-12)	1822	1858	1852	1932	1937	2044	2082	2163	2146	2165														
9th Grade											1201	1217	1236	1301	1238	1267	1264	1217	1196	1280	1287	1204	1242	1122
Sr. High (10-12)											3238	3336	3500	3489	3542	3448	3464	3444	3304	3340	3355	3519	3569	3477
SUBTOTAL	6950	7177	7293	7440	7564	7584	7665	7808	7700	7632	7873	7951	8167	8285	8260	8210	8237	8328	8000	8084	7946	8086	8034	7768
DIST TOTALS	13517	13819	13969	14101	14345	14519	14658	15015	14931	14990	15299	15526	15823	16006	15960	15847	15773	15816	14959	15011	14890	14979	14950	14440

12-13 SY Secondary reconfiguration: IHS becomes 9th Grade Center and UHS becomes a 10-12 school.

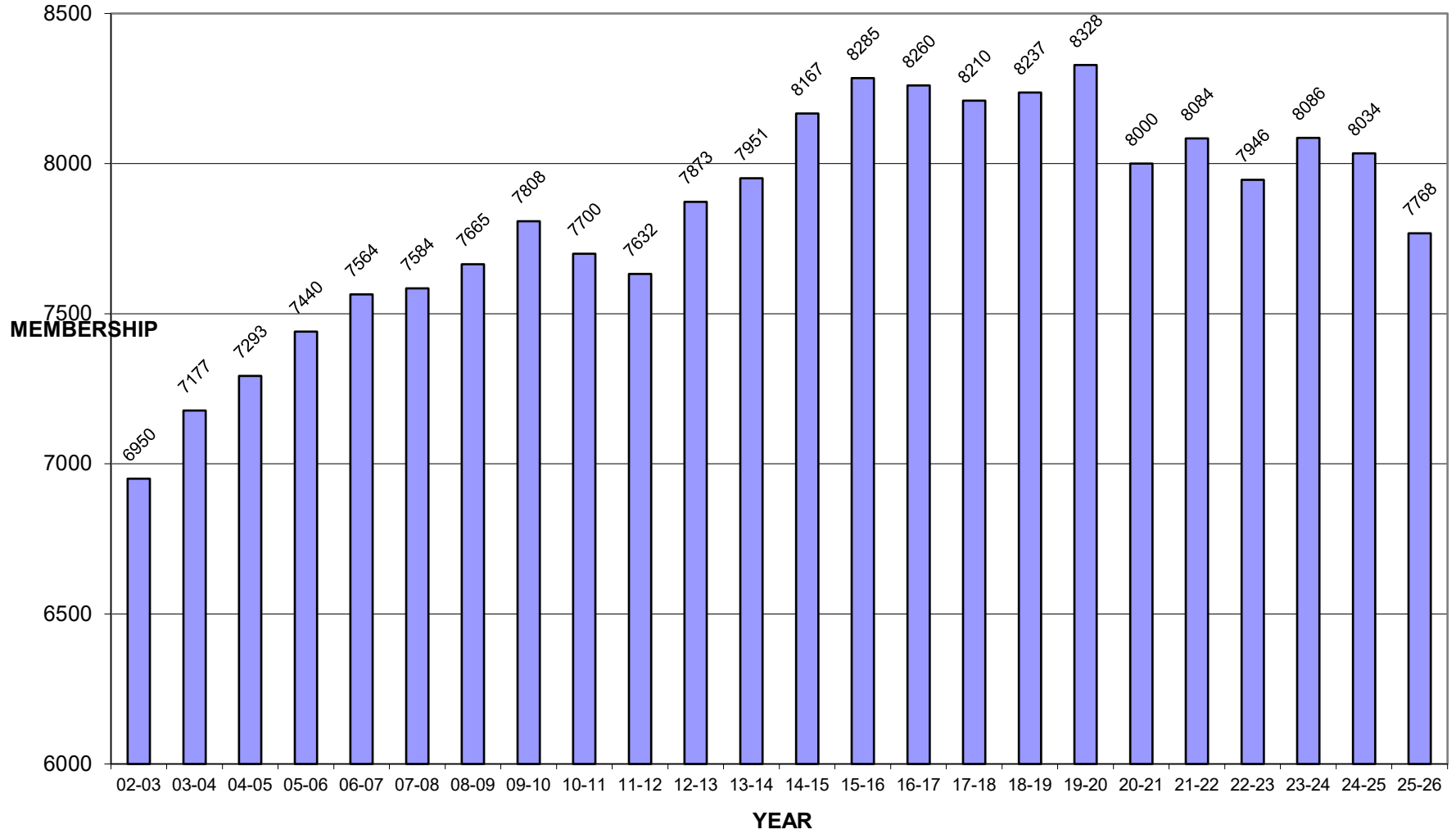
DISTRICT STUDENT POPULATION
October 1st, 2025



ELEMENTARY STUDENT POPULATION
October 1st, 2025



SECONDARY STUDENT POPULATION October 1st, 2025



ENROLLMENT INCREASE/DECREASE
October 1st, 2025

SCHOOL YEAR	ENROLLMENT	STUDENT INCREASE	PERCENT CHANGE
79-80	5540		
80-81	5986	446	8.1%
81-82	6358	372	6.2%
82-83	6787	429	6.7%
83-84	7038	251	3.7%
84-85	7673	635	9.0%
85-86	8186	513	6.7%
86-87	8572	386	4.7%
87-88	8648	76	0.9%
88-89	8872	224	2.6%
89-90	9156	284	3.2%
90-91	9566	410	4.5%
91-92	10079	513	5.4%
92-93	10443	364	3.6%
93-94	10682	239	2.3%
94-95	11144	462	4.3%
95-96	11599	455	4.1%
96-97	11901	302	2.6%
97-98	12305	404	3.4%
98-99	12662	357	2.9%
99-00	12977	315	2.5%
00-01	13054	77	0.6%
01-02	13315	261	2.0%
02-03	13517	202	1.5%
03-04	13819	302	2.2%
04-05	13969	150	1.1%
05-06	14101	132	0.9%
06-07	14345	244	1.7%
07-08	14519	174	1.2%
08-09	14658	139	1.0%
09-10	15015	357	2.4%
10-11	14931	-84	-0.6%

SCHOOL YEAR	ENROLLMENT	STUDENT INCREASE	PERCENT CHANGE
11-12	14990	59	0.4%
12-13	15299	309	2.1%
13-14	15526	227	1.5%
14-15	15823	297	1.9%
15-16	16006	183	1.2%
16-17	15960	-46	-0.3%
17-18	15847	-113	-0.7%
18-19	15773	-74	-0.5%
19-20	15816	43	0.3%
20-21	14959	-857	-5.4%
21-22	15011	52	0.3%
22-23	14890	-121	-0.8%
23-24	14979	89	0.6%
24-25	14950	-29	-0.2%
25-26	14440	-510	-3.4%

Average Annual Increase = 193.48

Cumulative Increase = 8900

*PK students included in totals beginning 98-99

LONGITUDINAL HISTORY
October 1st, 2025

Grade	*03-04	*04-05	*05-06	*06-07	*07-08	*08-09	09-10	10-11	11-12	12-13	13-14	14-15	15-16	16-17	17-18	18-19	19-20	20-21	21-22	22-23	23-24	24-25	25-26	Gain/ Loss From Last Year
P3 (Sp.Ed.)	53	45	41	38	24	8	6	9	9	15	11	14	16	14	15	17	20	11	23	18	35	39	27	-12
PK	533	576	596	570	604	645	741	751	816	830	743	755	738	764	773	802	757	650	693	719	677	646	667	21
KG	926	896	874	1044	1010	1055	1066	1077	1092	1124	1157	1098	1156	1055	1065	1044	1132	996	1025	984	968	915	850	-65
1st	1048	1068	1045	985	1066	999	1084	1096	1106	1085	1152	1189	1135	1155	1094	1046	1071	1070	983	1046	1024	1045	916	-129
2nd	988	1046	1088	1054	1010	1099	1037	1067	1108	1094	1123	1174	1195	1152	1141	1085	1086	1006	1092	978	1067	1046	1030	-16
3rd	1006	959	1016	1072	1081	998	1135	1027	1058	1140	1141	1157	1220	1201	1168	1143	1091	1054	1027	1078	1000	1082	1045	-37
4th	1034	1018	965	1036	1090	1085	1027	1133	1046	1067	1166	1106	1152	1197	1208	1149	1161	1043	1054	1052	1085	1027	1093	66
5th	1054	1068	1036	982	1050	1104	1111	1071	1123	1069	1082	1163	1109	1162	1173	1250	1170	1129	1030	1063	1035	1117	1044	-73
6th	1102	1077	1085	1107	1014	1086	1138	1120	1064	1179	1071	1101	1165	1129	1155	1181	1247	1108	1103	1054	1075	1056	1105	49
7th	1048	1115	1071	1103	1117	1032	1106	1120	1129	1088	1201	1125	1157	1177	1143	1188	1202	1224	1138	1128	1103	1066	1042	-24
8th	1064	1092	1132	1109	1141	1137	1054	1102	1097	1169	1126	1205	1173	1174	1197	1140	1218	1168	1223	1122	1185	1100	1022	-78
9th	1115	1111	1170	1204	1146	1185	1203	1062	1137	1191	1217	1236	1301	1238	1267	1264	1217	1196	1280	1287	1204	1242	1122	-120
10th	995	1047	1050	1104	1122	1144	1147	1154	1047	1130	1169	1221	1205	1288	1183	1216	1300	1213	1234	1192	1253	1156	1152	-4
11th	943	1020	1047	1045	1122	1078	1198	1110	1130	1064	1135	1154	1213	1104	1208	1114	1125	1133	1094	1104	1192	1226	1128	-98
12th	910	831	885	892	922	1003	962	1032	1028	1054	1032	1125	1071	1150	1057	1134	1019	958	1012	1059	1074	1187	1174	-13
13th	0	0	0	0	0	0	0	0	0	0	0	0	0	0	0	0	0	0	0	0	0	0	23	23
TOTALS	13819	13969	14101	14345	14519	14658	15015	14931	14990	15299	15526	15823	16006	15960	15847	15773	15816	14959	15011	14890	14977	14950	14440	-510

PK = 4 Yr Olds
P3 = Early Childhood Special Ed
KG = Kindergarten

These figures are the difference in membership for the cohort groups from last year to the current year.

<u>COHORT Group</u>	
204	PK-KG
1	KG to 1
-15	1 to 2
-1	2 to 3
11	3 to 4
17	4 to 5
-12	5 to 6
-14	6 to 7
-44	7 to 8
22	8 to 9
-90	9 to 10
-28	10 to 11
-52	11 to 12

RACE/ETHNICITY
October 1st, 2025

ASIAN					
School	Female	Percent	Male	Percent	Total
Andersen	21	52.5%	19	47.5%	40
Boevers	14	50.0%	14	50.0%	28
Cedar Ridge	16	35.6%	29	64.4%	45
Clark	1	20.0%	4	80.0%	5
Darnaby	18	40.9%	26	59.1%	44
Grove	11	34.4%	21	65.6%	32
Jarman	32	51.6%	30	48.4%	62
Jefferson	19	40.4%	28	59.6%	47
McAuliffe	1	12.5%	7	87.5%	8
Moore	22	40.7%	32	59.3%	54
Ochoa	16	45.7%	19	54.3%	35
Peters	13	46.4%	15	53.6%	28
Rosa Parks	27	47.4%	30	52.6%	57
6/7th	86	52.8%	77	47.2%	163
8th	36	51.4%	34	48.6%	70
9th	35	48.6%	37	51.4%	72
UHS	131	52.4%	119	47.6%	250
District	499	48.0%	541	52.0%	1040

HISPANIC/LATINO					
School	Female	Percent	Male	Percent	Total
Andersen	40	54.1%	34	45.9%	74
Boevers	130	47.6%	143	52.4%	273
Cedar Ridge	30	57.7%	22	42.3%	52
Clark	169	53.7%	146	46.3%	315
Darnaby	49	53.3%	43	46.7%	92
Grove	103	47.7%	113	52.3%	216
Jarman	88	62.9%	52	37.1%	140
Jefferson	68	50.7%	66	49.3%	134
McAuliffe	154	46.4%	178	53.6%	332
Moore	53	42.4%	72	57.6%	125
Ochoa	315	48.2%	339	51.8%	654
Peters	50	51.0%	48	49.0%	98
Rosa Parks	199	54.1%	169	45.9%	368
6/7th	429	49.1%	445	50.9%	874
8th	244	51.5%	230	48.5%	474
9th	228	47.2%	255	52.8%	483
UHS	790	51.6%	742	48.4%	1532
District	3139	50.3%	3097	49.7%	6236

RACE/ETHNICITY
October 1st. 2025

BLACK/AFRICAN AMERICAN					
School	Female	Percent	Male	Percent	Total
Andersen	20	48.8%	21	51.2%	41
Boevers	13	46.4%	15	53.6%	28
Cedar Ridge	34	46.6%	39	53.4%	73
Clark	28	48.3%	30	51.7%	58
Darnaby	34	55.7%	27	44.3%	61
Grove	53	46.5%	61	53.5%	114
Jarman	67	48.9%	70	51.1%	137
Jefferson	81	50.9%	78	49.1%	159
McAuliffe	28	43.8%	36	56.3%	64
Moore	32	64.0%	18	36.0%	50
Ochoa	57	53.3%	50	46.7%	107
Peters	15	50.0%	15	50.0%	30
Rosa Parks	40	39.6%	61	60.4%	101
6/7th	169	49.9%	170	50.1%	339
8th	82	49.1%	85	50.9%	167
9th	86	48.9%	90	51.1%	176
UHS	267	50.6%	261	49.4%	528
District	1106	49.5%	1127	50.5%	2233

AMERICAN INDIAN/ALASKA NATIVE*					
School	Female	Percent	Male	Percent	Total
Andersen	5	35.7%	9	64.3%	14
Boevers	6	54.5%	5	45.5%	11
Cedar Ridge	12	60.0%	8	40.0%	20
Clark	4	36.4%	7	63.6%	11
Darnaby	19	57.6%	14	42.4%	33
Grove	12	60.0%	8	40.0%	20
Jarman	10	47.6%	11	52.4%	21
Jefferson	4	50.0%	4	50.0%	8
McAuliffe	4	40.0%	6	60.0%	10
Moore	6	46.2%	7	50.0%	13
Ochoa	12	57.1%	9	42.9%	21
Peters	12	50.0%	12	50.0%	24
Rosa Parks	3	37.5%	5	62.5%	8
6/7th	46	54.8%	38	45.2%	84
8th	16	47.1%	18	52.9%	34
9th	16	45.7%	19	54.3%	35
UHS	64	56.6%	49	43.4%	113
District	251	52.3%	229	47.7%	480

*With the inclusion of a multi-race category, the number of Native Americans appears to have dropped as so many are being included in that category. The total number of students claiming to be all or part Native American on October 1st 2024 is 1368

RACE/ETHNICITY
October 1st. 2025

WHITE					
School	Female	Percent	Male	Percent	Total
Andersen	73	53.7%	63	46.3%	136
Boevers	16	42.1%	22	57.9%	38
Cedar Ridge	85	54.8%	70	45.2%	155
Clark	16	57.1%	12	42.9%	28
Darnaby	111	43.2%	146	56.8%	257
Grove	38	48.7%	40	51.3%	78
Jarman	51	49.0%	53	51.0%	104
Jefferson	43	47.8%	47	52.2%	90
McAuliffe	23	47.9%	25	52.1%	48
Moore	65	46.4%	75	53.6%	140
Ochoa	34	44.2%	43	55.8%	77
Peters	78	61.9%	48	38.1%	126
Rosa Parks	16	38.1%	26	61.9%	42
6/7th	214	45.4%	257	54.6%	471
8th	95	50.0%	95	50.0%	190
9th	122	51.5%	115	48.5%	237
UHS	321	45.5%	385	54.5%	706
District	1401	47.9%	1522	52.1%	2923

NATIVE HAWAIIAN/PACIFIC ISLANDER					
School	Female	Percent	Male	Percent	Total
Andersen	0	0.0%	0	0.0%	0
Boevers	0	0.0%	0	0.0%	0
Cedar Ridge	1	0.0%	0	0.0%	1
Clark	1	0.0%	0	0.0%	1
Darnaby	0	0.0%	0	0.0%	0
Grove	2	0.0%	2	0.0%	4
Jarman	0	0.0%	1	0.0%	1
Jefferson	1	25.0%	3	0.0%	4
McAuliffe	0	0.0%	0	0.0%	0
Moore	0	0.0%	1	0.0%	1
Ochoa	1	100.0%	0	0.0%	1
Peters	1	0.0%	2	0.0%	3
Rosa Parks	1	50.0%	1	50.0%	2
6/7th	6	75.0%	2	25.0%	8
8th	3	0.0%	3	50.0%	6
9th	2	100.0%	0	0.0%	2
UHS	7	50.0%	7	50.0%	14
District	26	54.2%	22	45.8%	48

RACE/ETHNICITY
October 1st, 2025

MULTI-RACE					
School	Female	Percent	Male	Percent	Total
Andersen	30	60.0%	20	40.0%	50
Boevers	14	40.0%	21	60.0%	35
Cedar Ridge	27	45.8%	32	54.2%	59
Clark	8	50.0%	8	50.0%	16
Darnaby	58	62.4%	35	37.6%	93
Grove	33	47.8%	36	52.2%	69
Jarman	46	50.0%	46	50.0%	92
Jefferson	44	53.0%	39	47.0%	83
McAuliffe	16	61.5%	10	38.5%	26
Moore	21	51.2%	20	48.8%	41
Ochoa	31	49.2%	32	50.8%	63
Peters	33	55.0%	27	45.0%	60
Rosa Parks	27	50.0%	27	50.0%	54
6/7th	110	52.9%	98	47.1%	208
8th	45	55.6%	36	44.4%	81
9th	61	52.1%	56	47.9%	117
UHS	158	47.3%	176	52.7%	334
District	762	51.5%	719	48.5%	1481

RACE/ETHNICITY
October 1st, 2025

DISTRICT															
SCHOOL	ASIAN	Percent	HISPANIC/ LATINO	Percent	BLACK/ AFRICAN AMERICAN	Percent	AMERICAN INDIAN/ ALASKA NATIVE	Percent	WHITE	Percent	NATIVE HAWAIIAN/ PACIFIC ISLANDER	Percent	MULTI- RACE	Percent	TOTAL
Andersen	40	11.3%	74	20.8%	41	11.5%	14	3.9%	136	38.3%	0	0.0%	50	14.1%	355
Boevers	28	6.8%	273	66.1%	28	6.8%	11	2.7%	38	9.2%	0	0.0%	35	8.5%	413
Cedar Ridge	45	11.1%	52	12.8%	73	18.0%	20	4.9%	155	38.3%	1	0.2%	59	14.6%	405
Clark	5	1.2%	315	72.6%	58	13.4%	11	2.5%	28	6.5%	1	0.2%	16	3.7%	434
Darnaby	44	7.6%	92	15.9%	61	10.5%	33	5.7%	257	44.3%	0	0.0%	93	16.0%	580
Grove	32	6.0%	216	40.5%	114	21.4%	20	3.8%	78	14.6%	4	0.8%	69	12.9%	533
Jarman	62	11.1%	140	25.1%	137	24.6%	21	3.8%	104	18.7%	1	0.2%	92	16.5%	557
Jefferson	47	9.0%	134	25.5%	159	30.3%	8	1.5%	90	17.1%	4	0.8%	83	15.8%	525
McAuliffe	8	1.6%	332	68.2%	64	13.1%	10	2.1%	47	9.7%	0	0.0%	26	5.3%	487
Moore	54	12.7%	125	29.5%	50	11.8%	13	3.1%	140	33.0%	1	0.2%	41	9.7%	424
Ochoa	35	3.7%	654	68.3%	107	11.2%	21	2.2%	77	8.0%	1	0.1%	63	6.6%	958
Peters	28	7.6%	98	26.6%	30	8.1%	24	6.5%	126	34.1%	3	0.8%	60	16.3%	369
Rosa Parks	57	9.0%	368	58.2%	101	16.0%	8	1.3%	42	6.6%	2	0.3%	54	8.5%	632
6/7th	163	7.6%	874	40.7%	339	15.8%	84	3.9%	471	21.9%	8	0.4%	208	9.7%	2147
8th	70	6.8%	474	46.4%	167	16.3%	34	3.3%	190	18.6%	6	0.6%	81	7.9%	1022
9th	72	6.4%	483	43.0%	176	15.7%	35	3.1%	237	21.1%	2	0.2%	117	10.4%	1122
UHS	250	7.2%	1532	44.1%	528	15.2%	113	3.2%	706	20.3%	14	0.4%	334	9.6%	3477
DISTRICT	1040	7.2%	6236	43.2%	2233	15.5%	480	3.3%	2922	20.2%	48	0.3%	1481	10.3%	14440

DISTRICT RACE/ETHNICITY SUMMARY
October 1st, 2025

SCHOOL	ASIAN												HISPANIC/LATINO												BLACK/AFRICAN AMERICAN											
	15-16	16-17	17-18	18-19	19-20	20-21	21-22	22-23	23-24	24-25	25-26	+OR-	15-16	16-17	17-18	18-19	19-20	20-21	21-22	22-23	23-24	24-25	25-26	+OR-	15-16	16-17	17-18	18-19	19-20	20-21	21-22	22-23	23-24	24-25	25-26	+OR-
Andersen	77	67	67	64	78	66	63	59	51	39	40	-1	54	58	67	59	72	66	71	72	76	75	74	-1	39	31	27	41	45	37	31	37	40	37	41	4
Boevers	46	45	62	49	36	29	31	35	33	30	28	-2	287	311	324	336	258	245	251	260	262	270	273	3	94	86	71	68	48	42	40	32	29	33	28	-5
Cedar Ridge	30	30	39	38	40	36	31	32	45	51	45	-6	47	43	52	62	60	59	58	69	69	69	52	-17	35	31	34	48	43	59	46	57	64	66	73	7
Clark	15	14	10	7	5	6	8	10	13	5	5	0	358	374	366	373	262	297	289	254	271	315	315	0	132	112	126	120	69	59	67	51	60	58	58	0
Darnaby	24	25	25	32	26	25	31	37	37	45	44	-1	62	73	79	71	67	77	83	78	76	95	92	-3	51	56	56	62	56	51	55	56	60	57	61	4
Grove	20	22	26	33	41	36	34	34	34	32	32	0	185	193	179	198	203	187	205	200	226	228	216	-12	133	126	109	112	118	109	123	120	110	128	114	-14
Jarman	67	81	87	96	98	97	75	67	73	76	62	-14	114	141	107	117	124	112	126	119	107	144	140	-4	135	135	118	106	123	138	146	149	115	119	137	18
Jefferson	50	56	55	62	68	67	57	56	51	48	47	-1	148	148	126	144	145	121	109	117	123	133	134	1	90	100	108	111	125	121	144	165	193	190	159	-31
McAuliffe	10	30	25	19	18	16	12	15	12	8	8	0	410	429	399	379	332	352	313	330	339	332	332	0	66	63	77	69	86	79	64	62	62	62	64	2
Moore	86	80	75	73	79	75	73	66	62	56	54	-2	97	103	103	111	116	116	132	152	154	140	125	-15	70	57	56	47	55	51	56	57	48	42	50	8
Ochoa	26	23	18	19	28	29	23	19	23	31	35	4	326	342	308	310	611	608	630	605	612	654	654	0	66	79	69	74	121	116	106	102	98	104	107	3
Peters	27	23	22	19	21	22	25	25	30	40	28	-12	82	73	76	66	64	69	78	88	81	93	98	5	47	30	30	35	34	29	47	44	43	47	30	-17
Rosa Parks	49	60	52	61	46	47	63	56	49	57	57	0	476	476	446	452	366	345	307	334	354	378	368	-10	93	120	153	146	132	111	103	96	110	105	101	-4
6/7th	168	169	132	140	147	149	163	155	150	158	163	5	723	785	791	878	952	937	917	887	884	899	874	-25	356	335	359	358	342	352	335	326	368	336	339	3
8th	76	84	92	69	65	78	74	81	83	70	70	0	362	365	417	403	469	468	491	463	502	461	474	13	182	175	182	180	192	162	176	178	184	169	167	-2
IHS (9-10)/9th	99	87	81	97	68	63	81	74	86	81	72	-9	389	444	401	458	461	473	515	554	534	566	483	-83	206	185	183	205	186	193	189	183	180	194	176	-18
UHS	245	269	259	261	266	251	244	227	229	249	250	1	887	976	1039	1103	1189	1181	1272	1311	1455	1553	1532	-21	540	541	510	543	554	514	525	514	510	507	528	21
DISTRICT	1115	1165	1127	1139	1130	1092	1088	1048	1061	1076	1040	-36	5007	5334	5280	5520	5751	5713	5847	5893	6125	6405	6236	-169	2335	2262	2268	2325	2329	2223	2253	2229	2274	2254	2233	-21
Percent of Total School Enrollment	7.0%	7.3%	7.1%	7.2%	7.1%	7.3%	7.2%	7.0%	7.1%	7.4%	7.2%		31.3%	33.4%	33.3%	35.0%	36.4%	38.2%	39.0%	39.6%	40.9%	43.8%	42.7%		14.6%	14.2%	14.3%	14.7%	14.7%	14.9%	15.0%	15.0%	15.2%	15.4%	15.5%	

12-13 SY Secondary reconfiguration: IHS becomes 9th Grade Center and UHS becomes a 10-12 school.

DISTRICT RACE/ETHNICITY SUMMARY
October 1st, 2025

SCHOOL	AMERICAN INDIAN/ALASKA NATIVE													WHITE													NATIVE HAWAIIAN/PACIFIC ISLANDER																						
	15-16	16-17	17-18	18-19	19-20	20-21	21-22	22-23	23-24	24-25	25-26	+OR-	15-16	16-17	17-18	18-19	19-20	20-21	21-22	22-23	23-24	24-25	25-26	+OR-	15-16	16-17	17-18	18-19	19-20	20-21	21-22	22-23	23-24	24-25	25-26	+OR-													
Andersen	23	18	24	30	34	24	18	18	18	13	14	1	236	223	211	218	209	175	175	165	168	147	136	-11	0	0	0	0	0	0	0	0	0	0	0	0	0	0	0	0	0	0	0	0					
Boevers	13	13	12	19	12	9	7	9	8	10	11	1	93	80	99	101	75	58	58	68	66	56	38	-18	0	0	0	0	3	2	2	0	0	0	0	0	0	0	0	0	0	0	0	0	0				
Cedar Ridge	23	32	20	24	23	19	25	22	21	21	20	-1	310	287	266	278	235	213	203	189	201	171	155	-16	1	1	1	0	0	0	0	0	0	0	0	0	0	0	0	1	1	1	1						
Clark	26	23	21	14	9	8	11	14	12	12	11	-1	73	91	104	101	65	48	41	43	47	39	28	-11	10	12	7	9	6	4	0	0	0	0	0	0	0	0	0	1	1	1	1						
Darnaby	27	29	35	36	32	28	40	41	37	40	33	-7	378	379	363	354	333	278	281	283	262	261	257	-4	0	0	2	1	1	0	0	0	0	0	0	0	0	0	0	0	0	0	0	0	0				
Grove	39	34	30	28	30	22	23	24	19	22	20	-2	184	145	132	121	110	115	105	94	103	74	78	4	2	2	1	2	1	2	1	1	1	1	1	0	4	4	4	4	4	4	4						
Jarman	32	27	31	26	33	34	32	21	16	18	21	3	167	171	167	136	171	161	144	141	128	116	104	-12	0	1	1	1	1	0	0	3	2	3	1	1	1	1	1	1	1	1	1	1					
Jefferson	29	32	28	28	30	26	24	21	17	10	8	-2	186	175	160	155	135	113	120	112	101	102	90	-12	2	1	3	0	0	2	4	6	6	6	4	4	2	2	2	2	2	2	2	2					
McAuliffe	25	26	33	17	15	10	9	5	4	9	10	1	78	65	93	84	69	63	66	59	50	46	48	2	0	0	1	1	2	2	2	0	1	0	0	0	0	0	0	0	0	0	0	0	0				
Moore	29	24	23	16	22	20	14	17	16	16	13	-3	258	245	221	211	193	172	186	188	167	156	140	-16	0	1	0	1	1	1	1	1	1	1	1	1	1	1	1	1	1	1	1	1	1				
Ochoa	22	28	19	15	21	21	14	15	21	23	21	-2	133	98	90	95	156	128	115	109	95	90	77	-13	0	1	1	0	0	0	0	0	0	3	6	1	1	1	1	1	1	1	1	1	1	1			
Peters	23	21	22	22	33	23	26	25	28	28	24	-4	267	259	259	244	205	166	181	191	177	155	126	-29	0	0	1	0	0	0	0	0	0	0	0	0	0	0	0	0	3	3	3	3	3	3	3		
Rosa Parks	24	21	23	25	28	20	15	14	23	17	8	-9	110	97	127	114	112	95	75	73	63	44	42	-2	0	1	2	1	1	1	4	8	7	4	2	2	2	2	2	2	2	2	2	2	2				
6/7th	128	129	120	111	106	91	98	82	78	81	84	3	776	710	670	650	660	567	499	490	480	439	471	32	1	2	4	2	4	7	8	6	5	7	8	1	1	1	1	1	1	1	1	1	1				
8th	64	69	67	59	61	56	47	50	41	33	34	1	407	390	341	324	312	293	307	241	249	247	190	-57	1	1	1	5	0	1	4	5	4	4	4	6	6	6	6	6	6	6	6	6	6				
IHS (9-10)/9th	65	59	67	66	63	63	60	44	48	38	35	-3	455	380	442	341	334	287	309	303	248	239	237	-2	2	0	1	2	4	2	1	5	6	5	2	2	2	2	2	2	2	2	2	2	2				
UHS	198	190	179	170	166	156	146	149	140	136	113	-23	1368	1300	1170	1113	999	915	865	836	842	796	706	-90	4	4	2	4	3	8	7	10	10	12	14	14	14	14	14	14	14	14	14						
DISTRICT	790	775	754	706	718	630	609	571	547	527	480	-47	5479	5095	4915	4640	4373	3847	3730	3585	3447	3178	2923	-255	23	27	28	29	27	30	32	43	46	48	48	48	48	48	48	48	48	48	48						
Percent of Total School Enrollment	4.9%	4.9%	4.8%	4.5%	4.5%	4.2%	4.1%	3.8%	3.7%	3.6%	3.3%	34.2%	31.9%	31.0%	29.4%	27.6%	25.7%	24.8%	24.1%	23.0%	21.7%	20.2%	0.1%	0.2%	0.2%	0.2%	0.2%	0.2%	0.2%	0.2%	0.3%	0.3%	0.3%	0.3%	0.3%	0.3%	0.3%	0.3%	0.3%	0.3%	0.3%	0.3%	0.3%	0.3%	0.3%	0.3%	0.3%	0.3%	0.3%

12-13 SY Secondary reconfiguration: IHS becomes 9th Grade Center and UHS becomes a 10-12 school.

DISTRICT RACE/ETHNICITY SUMMARY
October 1st, 2025

MULTI-RACE												
SCHOOL	15-16	16-17	17-18	18-19	19-20	20-21	21-22	22-23	23-24	24-25	25-26	+OR-
Andersen	34	32	45	47	51	42	42	37	32	37	50	13
Boevers	47	40	44	36	36	31	33	30	35	34	35	1
Cedar Ridge	54	58	67	56	69	54	61	62	58	41	59	18
Clark	45	46	62	50	33	39	26	31	26	19	16	-3
Darnaby	68	78	91	87	80	76	72	73	78	92	93	1
Grove	73	59	66	58	64	58	69	75	65	68	69	1
Jarman	76	74	72	69	71	84	79	114	92	99	92	-7
Jefferson	49	56	65	79	80	87	78	103	84	86	83	-3
McAuliffe	32	42	33	38	48	33	44	26	31	22	26	4
Moore	57	59	75	52	46	49	47	39	41	42	41	-1
Ochoa	47	41	41	47	77	69	60	57	59	60	63	3
Peters	50	48	54	55	63	44	39	61	63	67	60	-7
Rosa Parks	42	58	61	45	45	35	41	41	45	42	54	12
6/7th	170	176	222	230	238	221	229	236	213	203	208	5
8th	81	90	97	100	119	124	110	104	122	116	81	-35
9th	85	83	92	95	101	125	115	124	102	119	117	-2
UHS	247	262	289	270	267	281	279	308	333	316	334	18
DISTRICT	1257	1302	1476	1414	1488	1452	1424	1521	1479	1463	1481	18

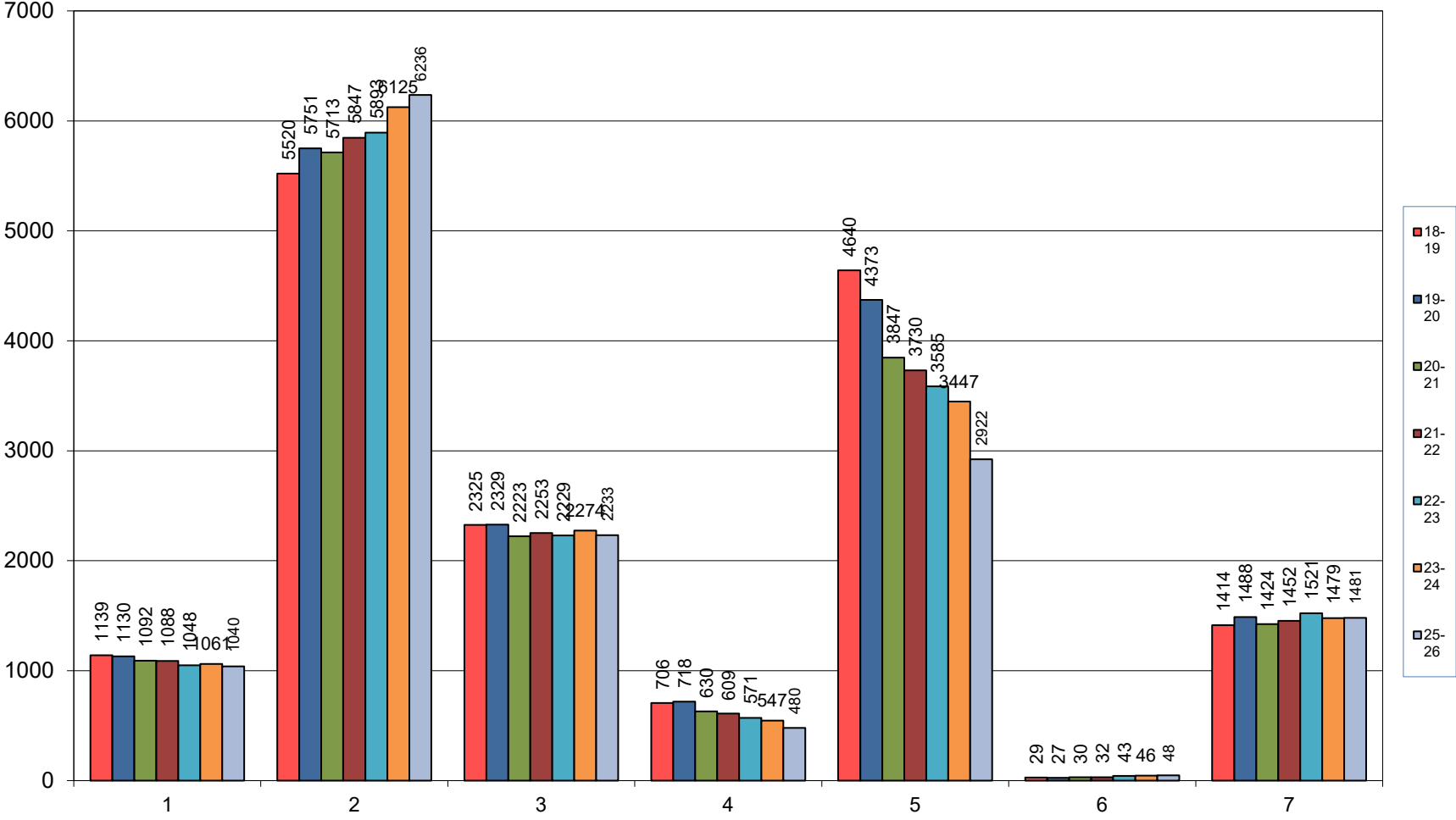
TOTAL												
SCHOOL	15-16	16-17	17-18	18-19	19-20	20-21	21-22	22-23	23-24	24-25	25-26	+OR-
Andersen	463	429	441	459	489	410	400	388	385	354	355	1
Boevers	580	575	612	609	468	418	420	434	433	415	413	-2
Cedar Ridge	500	482	479	506	470	447	417	431	458	411	405	-6
Clark	659	672	696	674	449	448	455	403	429	434	434	0
Darnaby	610	640	651	643	595	531	566	568	550	581	580	-1
Grove	636	581	543	552	567	540	549	548	558	533	533	0
Jarman	591	630	583	551	621	621	607	614	533	571	557	-14
Jefferson	554	568	545	579	583	526	543	578	575	574	525	-49
McAuliffe	621	655	661	607	570	566	499	497	499	488	487	-1
Moore	597	569	553	511	512	482	511	520	489	426	424	-2
Ochoa	620	612	546	560	1014	962	957	907	911	954	958	4
Peters	496	454	464	441	420	348	401	434	422	381	369	-12
Rosa Parks	794	833	864	844	730	660	602	622	651	632	632	0
6/7th	2322	2306	2298	2369	2449	2332	2241	2182	2178	2142	2147	5
8th	1173	1174	1197	1140	1218	1168	1223	1122	1185	1022	1022	0
9th	1301	1238	1267	1264	1217	1196	1280	1287	1204	1131	1122	-9
UHS	3489	3542	3448	3464	3444	3304	3340	3355	3519	3569	3477	-92
DISTRICT	16006	15960	15848	15773	15816	14959	15011	14890	14979	14618	14440	-178

Percent of Total												
School Enrollment	7.9%	8.2%	9.3%	9.0%	9.4%	9.7%	9.5%	10.2%	9.9%	10.0%	10.3%	

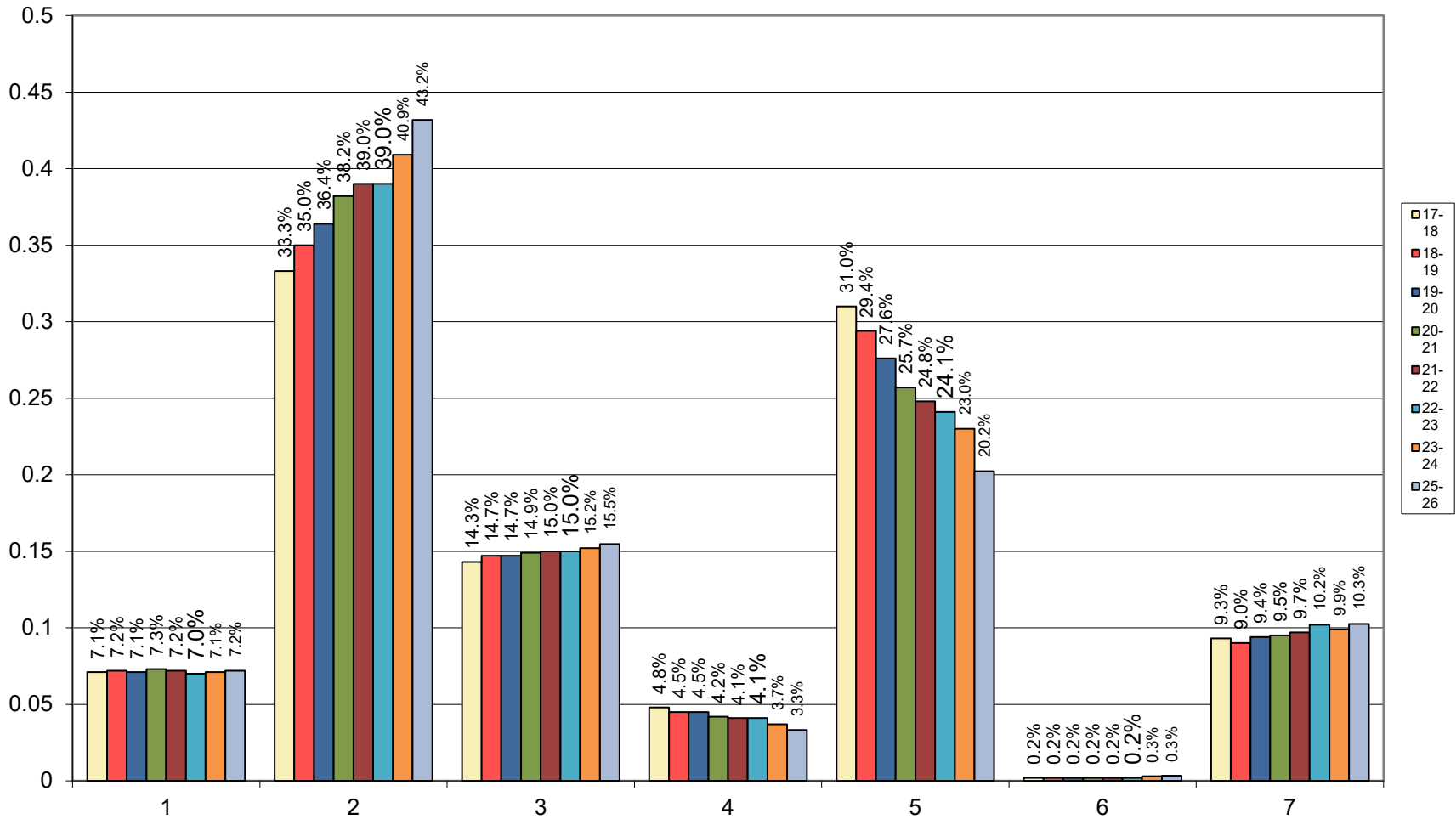
	12-13	13-14	14-15	15-16	16-17	17-18	18-19	19-20	20-21	21-22	22-23	23-24	24-25	25-26
Asian	1100	1118	1159	1115	1165	1127	1139	1130	1092	1088	1048	1061	1076	1040
Hispanic/Latino	3874	4319	4603	5007	5334	5280	5520	5751	5713	5847	5893	6125	6405	6236
Black/African American	3448	2510	2598	2335	2262	2268	2325	2329	2223	2253	2229	2274	2254	2233
American Indian/Alaska Native	1540	1461	1582	790	775	754	706	718	630	609	571	547	527	480
White	6314	6093	5853	5479	5095	4915	4640	4373	3847	3730	3585	3447	3178	2922
Native Hawaiian/Pacific Islander	23	25	28	23	27	28	29	27	30	32	43	46	48	48
Multiple Races	0	0	0	1257	1302	1476	1414	1488	1424	1452	1521	1479	1462	1481
TOTAL	16299	15526	15823	16006	15960	15848	15773	15816	14959	15011	14890	14979	14950	14440

	12-13	13-14	14-15	15-16	16-17	17-18	18-19	19-20	20-21	21-22	22-23	23-24	24-25	25-26
Asian	0.072	0.072	0.073	0.07	0.073	0.071	0.072	0.071	0.073	0.072	0.07	0.071	0.072	0.072
Hispanic/Latino	0.253	0.278	0.291	0.313	0.334	0.333	0.35	0.364	0.382	0.39	0.39	0.409	0.428	0.432
Black/African American	0.16	0.162	0.164	0.146	0.142	0.143	0.147	0.147	0.149	0.15	0.15	0.152	0.151	0.155
American Indian/Alaska Native	0.1	0.094	0.1	0.049	0.049	0.048	0.045	0.045	0.042	0.041	0.041	0.037	0.035	0.033
White	0.413	0.392	0.37	0.342	0.319	0.31	0.294	0.276	0.257	0.248	0.241	0.23	0.213	0.202
Native Hawaiian/Pacific Islander	0.002	0.002	0.002	0.001	0.002	0.002	0.002	0.002	0.002	0.002	0.002	0.002	0.003	0.003
Multiple Races	0	0	0	0.079	0.082	0.093	0.09	0.094	0.095	0.097	0.102	0.099	0.098	0.103

District Ethnicity October 1st, 2025

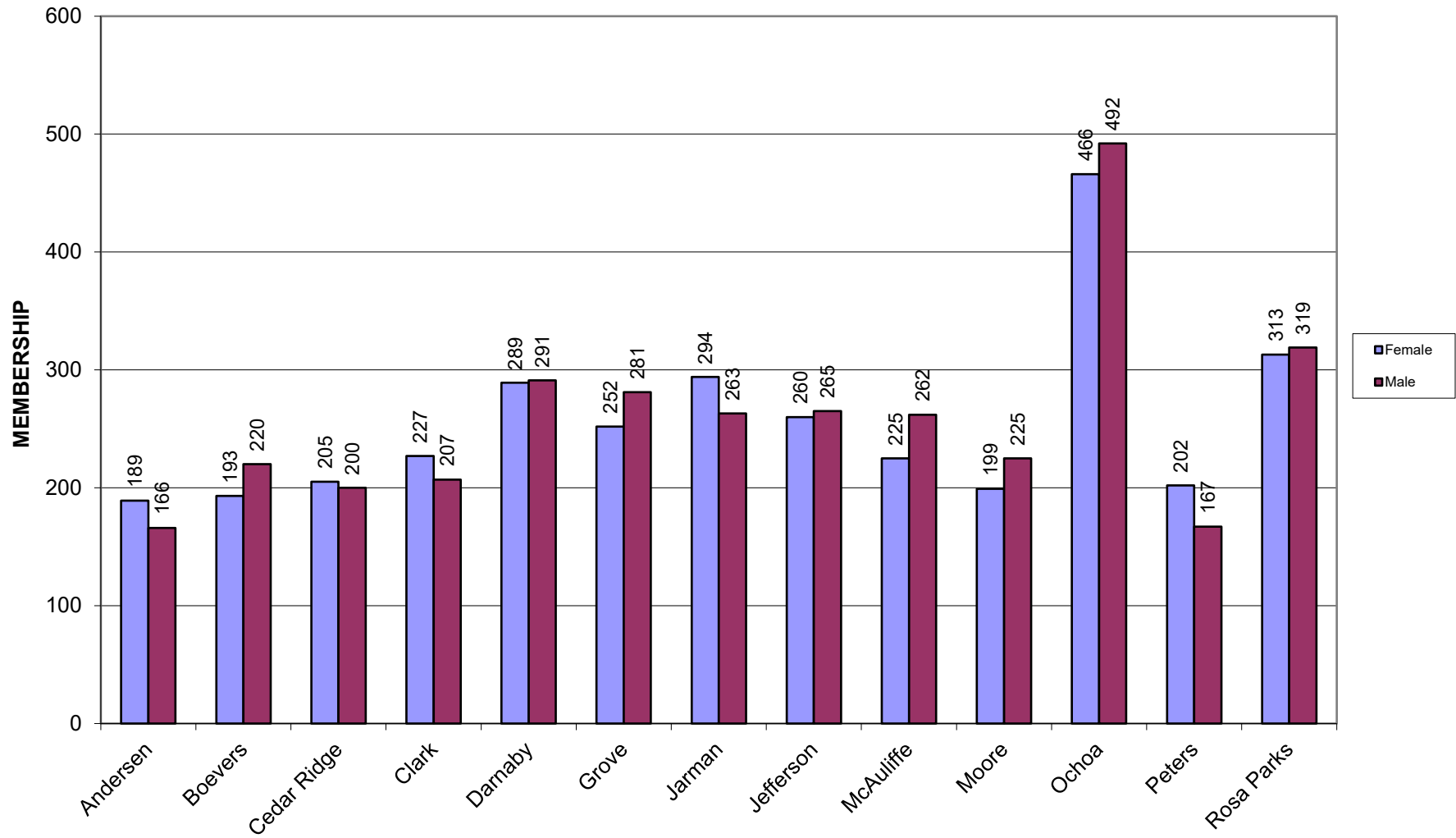


DISTRICT ETHNICITY October 1st, 2025

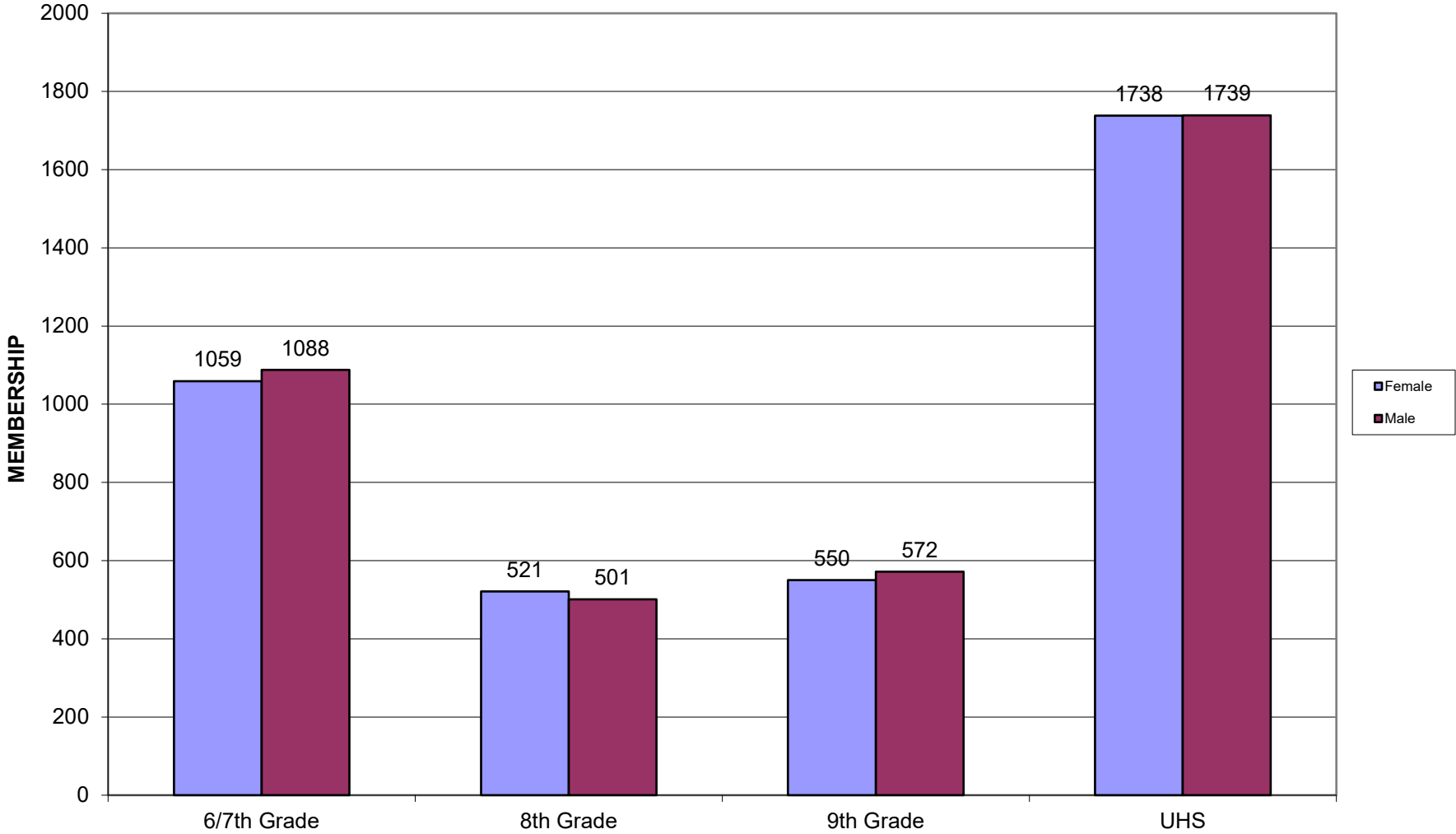


ELEMENTARY GENDER

October 1st, 2025



SECONDARY GENDER
October 1st, 2025

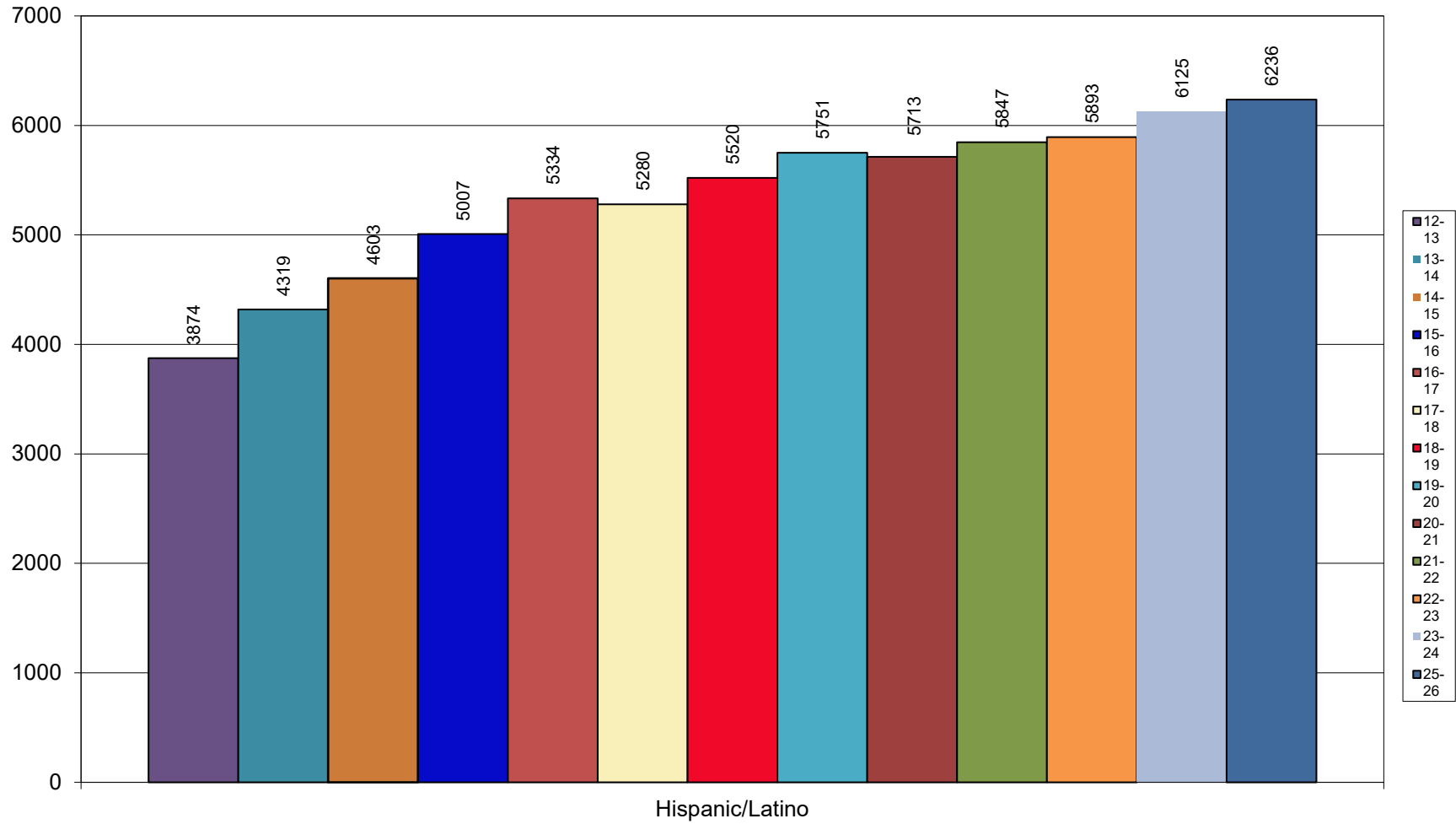


DISTRICT GENDER ENROLLMENT BY SITE

October 1st, 2025

School	Female	Male	Total
Andersen	189	166	355
Boevers	193	220	413
Cedar Ridge	205	200	405
Clark	227	207	434
Darnaby	289	291	580
Grove	252	281	533
Jarman	294	263	557
Jefferson	260	265	525
McAuliffe	225	262	487
Moore	199	225	424
Ochoa	466	492	958
Peters	202	167	369
Rosa Parks	313	319	632
6/7th Grade	1059	1088	2147
8th Grade	521	501	1022
9th Grade	550	572	1122
UHS	1738	1739	3477
TOTAL	7182	7258	14440

Hispanic Ethnicity Regardless of Race October 1st, 2025



Hispanic Ethnicity Regardless of Race October 1st, 2025

