

# WARRIOR newsletter <sup>3/23/26</sup>

## UPCOMING EVENTS

3/25/26 CLASS BASKET DONATIONS DUE

3/25/26 - GREEN MEALS TICKETS DUE

3/26/26 - BLUE & ORANGE RAFFLE TICKETS DUE

3/26/26 ONLINE PICTURE ORDERS DUE

(WITHOUT LATE FEE)

3/27/26 UIL MEET

3/27/26 CAKE WALK ITEMS CAN START COMING IN

3/28/26 FESTIVAL 11AM-2PM



School  
Photos  
are ready!

Please see  
attached  
information

about online  
ordering.

## MR. KENNE'S CORNER

What a Great Time to Be a Warrior! Welcome back, Warriors! I hope everyone had a safe, relaxing, and well-deserved break—we are ready to hit the ground running! Our 2nd–8th grade Warriors will be competing in a UIL meet on Friday, March 27th, and we are excited to see them showcase all their hard work. A big thank you to our PTC for providing lunch and snacks for our participants—we appreciate your continued support of our students! Because of this, we are asking that students **do not** bring money to the UIL meet—everything they need will be taken care of. The excitement is really building as we head into our Annual Spring Festival on March 28th! We are still gratefully accepting donations for our Live Auction, Silent Auction, and General Store. If you would like to contribute, we would truly appreciate your support. Please drop off donations at the front office as soon as possible—we've started building auction lots and putting together the auction book, so the sooner items come in, the better! Tickets are on sale now: Raffle Tickets: \$1 each, \$1,000 Meat Package & Freezer Raffle: \$5 each, BBQ Meal Tickets: \$10 each. All meal tickets (sold & unsold) are due back Wednesday, March 25<sup>th</sup> and all raffle tickets (sold & unsold) are due back on Thursday, March 26<sup>th</sup>. Please send tickets back this week so we can finalize counts and get everything ready for festival day. We will have a limited number of meal tickets available the day of the event—while supplies last! If you'd like to purchase tickets or donate items, please contact the school office or reach out to one of our Warriors. Your generosity is what makes this event possible, and we are incredibly thankful for the continued support from our community. Westhoff is a special place because of all of you. As always, thank you for supporting our students and helping us build something great. Kids truly do come first here—and it shows every single day.

# FESTIVAL WEEK!



## CAKE WALK ITEMS NEEDED!

When: Friday & Saturday  
What: Cakes, Cookies, Pies, Brownies,  
Rice Krispy Treats, etc  
(must not need refrigeration)  
Where: Drop off @ front office

## COUNTRY STORE ITEMS NEEDED!

When: THIS WEEK  
What: Gently used items & homemade  
goodies: canned goods, jellies, eggs, bread,  
etc.  
(must not need refrigeration)  
Where: Drop off @ front office

Parents/Guardians - we still need your help to make this festival a success!  
If you still have meal and raffle tickets - there's still time to sell. If you are not  
planning on selling anymore, please turn in as soon as possible.

**REMEMBER: THIS MONEY GOES BACK TO YOUR STUDENTS AS  
SCHOOL SUPPLIES, EDUCATIONAL MATERIALS, FIELD TRIPS,  
UNIFORMS/SHIRTS, & MORE!**

If you have picked up donations from businesses, we need those items turned in **ASAP!**

## SILENT AUCTION CLASSROOM BASKET DONATIONS DUE WEDNESDAY!

PREK/K - FUN IN THE SUN

5<sup>TH</sup> - ICE CREAM

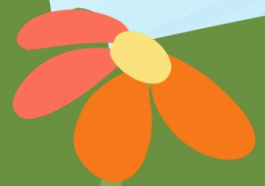
8<sup>TH</sup>/9<sup>TH</sup> - GAME NIGHT & SNACKS

1<sup>ST</sup> /2<sup>ND</sup> - BAKING

6<sup>TH</sup> - SPORTS

3<sup>RD</sup>/4<sup>TH</sup> - SPRING GARDENING

7<sup>TH</sup> - ARTS & CRAFTS



## ***Hello Westhoff School-***

*It has been a joy photographing your children, again, this spring!*

Please use the below link to proof and order your 2026 school portraits. The links will expire on March 26th. Images are available to purchase after that date, and a late fee will apply.

Please note, a 5x7 class print is included in packages A B C and D, but can be purchased a la cart as well.

Digital files will be emailed directly to you after the order deadline of March 26th.

Please reach out with any questions!

**<https://laurahaleyphotography.shootproof.com/WesthoffSpringPortraits2026>**

