

6TH → 7TH GRADE SCHEDULING



WHERE ARE WE RIGHT NOW?

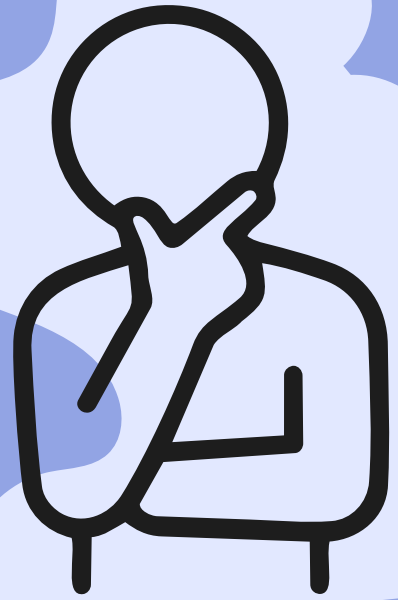
- End of the 3rd Quarter/beginning of the 4th...
- Are we happy with our grades?
- Are we completing all classwork/HW?
- Are we studying for our tests and quizzes/attending Period 10 when we have upcoming assessments?

TIPS FOR SUCCESS:

- Communicate with your teachers when material feels challenging or overwhelming.
- Attend Period 10 daily.



WHAT IS DIFFERENT ABOUT 7TH GRADE?



THERE ARE TWO TEAMS...

PURPLE AND GOLD

LUNCH MOVES TO...

PERIOD 6

CHANGES...

- NEW ELECTIVE OPTIONS...
- SPORTS BEGIN
- INCREASED RESPONSIBILITY AND ACCOUNTABILITY



7TH GRADE COURSES



ENGLISH 7

SOCIAL STUDIES 7

SCIENCE 7

MATH 7 OR MATH 7 COMPACTED

FRENCH 7 OR SPANISH 7

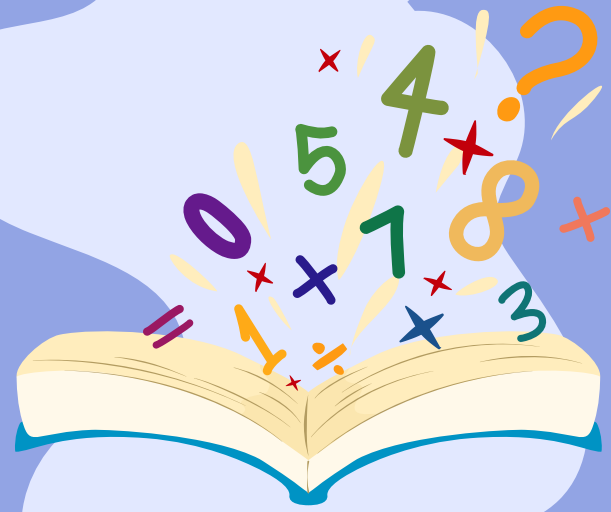
PHYSICAL EDUCATION

ORCHESTRA, BAND, CHORUS OR GENERAL MUSIC

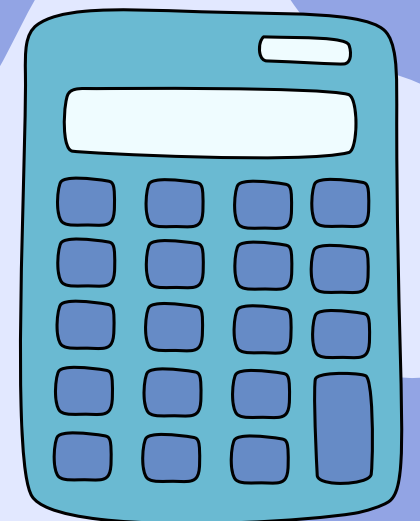
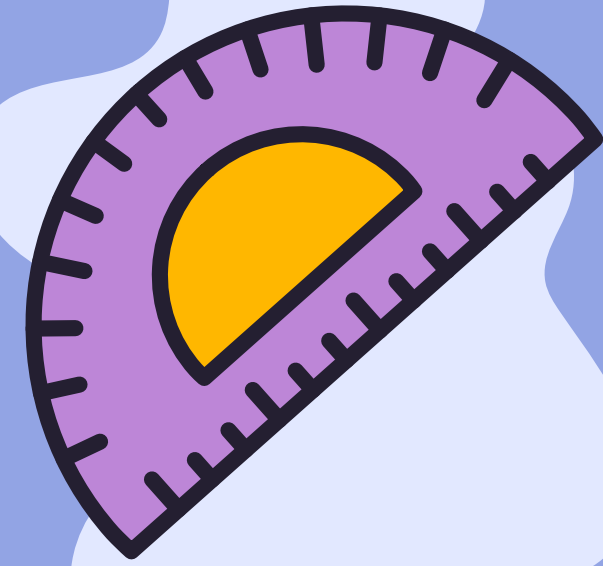
ART 7, ASTRONOMY, CODING AND HEALTH



MATH 7 OR MATH 7 COMPACTED



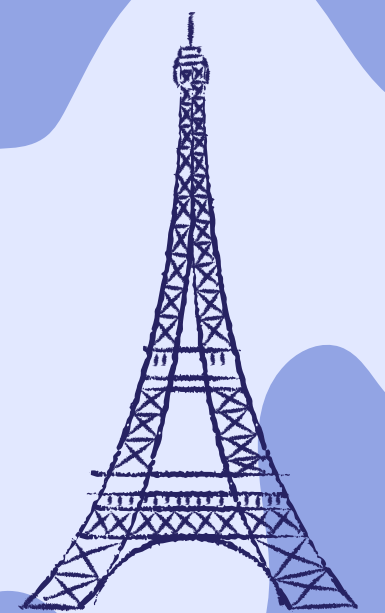
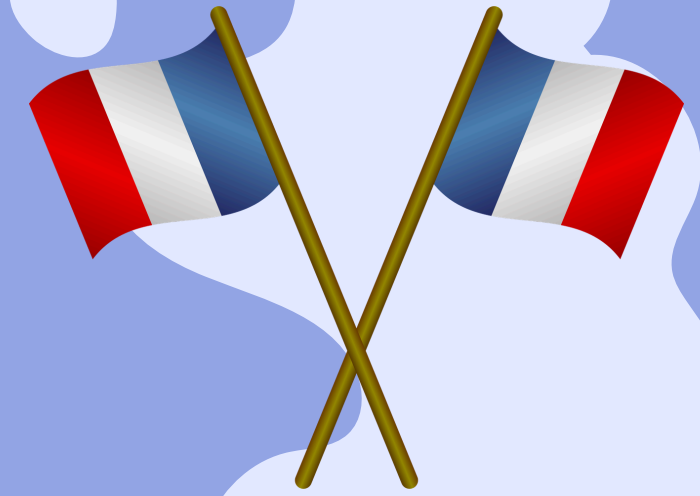
- Teacher recommendation is required to join Math 7 Compacted.
- Overall quarter averages this year of 90+.
- Quiz and test averages of 90+.
- Placements will be finalized at the end of this school year.
- *Successful completion of Math 7 Compacted in 7th grade leads to Algebra I placement in 8th grade, which is a high school credit-bearing course and will be displayed on your high school transcript.



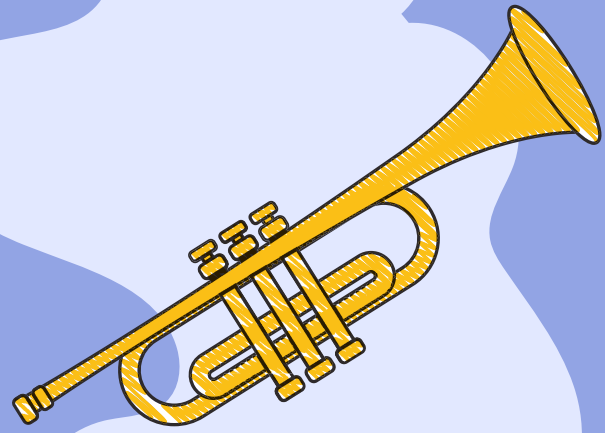
FRENCH 7 OR SPANISH 7



- Please discuss your choice with your parents and have them fill out the Google Form if they have not done so already. The form was sent home via ParentSquare.
- This is an important selection, as it will be the world language you take throughout high school.
- The language you select will be a high school credit-bearing course for all students in 8th grade and will be displayed on your high school transcript.
- ***You can change your selection up until May 15.** Please see me to switch.



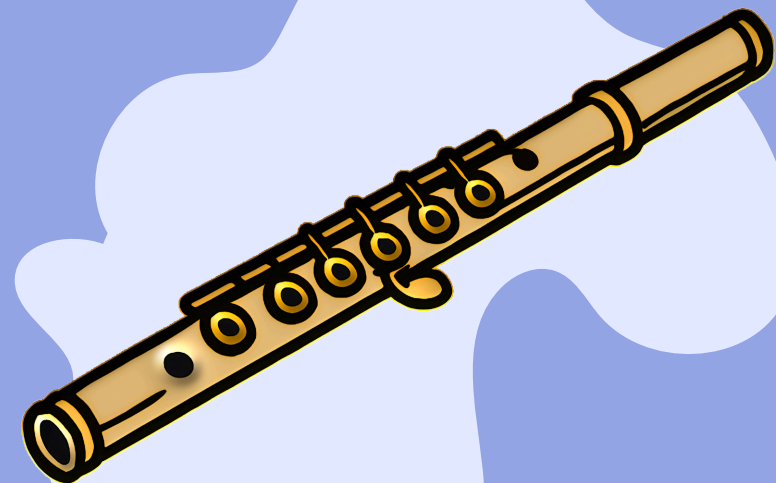
7TH GRADE MUSIC SELECTION



-Please complete this [Google Form](#) for your 7th grade music selection.

-Your options are:

- Band 7
- Chorus 7
- General Music 7
- Orchestra 7

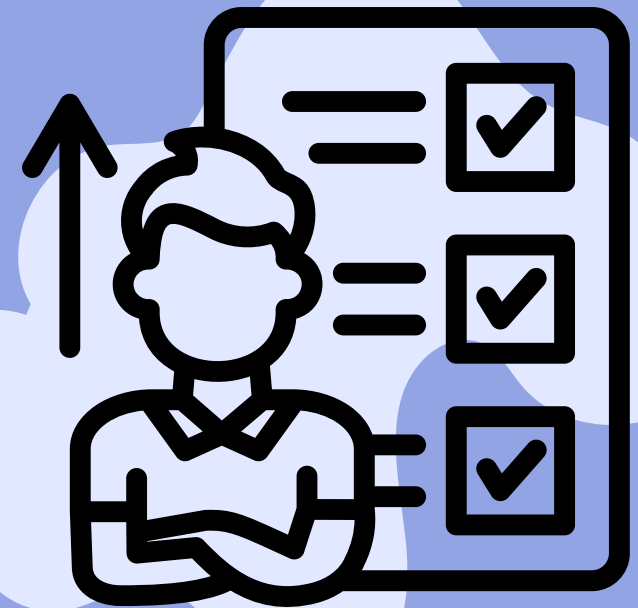


NAVIANCE ACTIVITY



Complete the [Naviance Career Key](#) by following these steps:

1. Log in (link to log in can be found in Google Classroom).
2. Hover over the ***Self-Discovery*** tab along the top of the screen.
3. Click ***Career Key*** and begin the assessment.





QUESTIONS?

