

ADA IMPROVEMENTS/ELEVATOR

**WESTERN MIDDLE SCHOOL
1 WESTERN JR HIGHWAY
GREENWICH, CT 06830
BID #2569-26**

S/P+A PROJECT #23.097

DATE: March 19, 2026

The following changes to the Drawings and Project Specifications shall become a part of the Drawings and Project Specifications; superseding previously issued Drawings and Project Specifications to the extent modified by Addendum #5.

General Information:

- The deadline for RFIs has been extended to Wednesday, March 25, 2026, 12:00pm.
- The deadline for posting addenda has been extended to Friday, March 27, 2026, 12:00pm.
- See attached RFI log. (1)

Changes to Addenda:

- ADDENDUM #3, Changes to the Drawings:
 - DRAWING S1.1, FOUNDATION & MAIN LEVEL FRAMING PLANS, delete its entirety. A new DRAWING S1.1 has been added and is attached as part of this addendum.* (*Per RFIs #009 & #011*)
 - DRAWING A850, DOOR/WINDOW/FINISH/CASEWORK SCHEDULE, TYPES & DETAILS, delete in its entirety. A new DRAWING A850 has been added and is attached as part of this addendum.* (*Per RFIs #001 & #010*)
 - The following MECHANICAL drawings have been deleted in their entirety. New drawings have been added and are attached as part of this addendum* (2):
 - M110 MECH BASEMENT FLOOR PLAN (*Per Internal Review*)
 - M200 MECH SCHEDULES (*Per Internal Review*)
 - The following ELECTRICAL drawings have been deleted in their entirety. New drawings have been added and are attached as part of this addendum* (2):
 - E021 DEMOLITION FLOOR PLANS – POWER (*Per RFI #006*)
 - E111 LOWER & MAIN LEVEL FLOOR PLANS – LIGHTING (*Per Internal Review*)

Changes to the Specifications:

- BID FORM, delete in its entirety. A new BID FORM has been added and is attached as part of this addendum. (4) (*Per RFI #011*)

Changes to the Drawings:

- DRAWING P501, PLUMBING SCHEDULES & DETAILS has been deleted in its entirety. A new DRAWING P501 has been added and is attached as part of this addendum.* (*Per RFI #008*)

The bid date has been extended to Wednesday, April 1, 2026 at 1:00pm by this addendum.

The addendum consists of seven (7) pages of 8½" x 11" text and seven (7) 30" x 42" drawings*.

End of Addendum #5



SILVER PETRUCELLI + ASSOCIATES
 3190 Whitney Avenue | Hamden CT 06518
 311 State Street | New London CT 06320

BID RFI LOG

Project: **Western Middle School ADA Improvements/Elevator**
 State Project/Bid #: **2569-26**

RFI Deadline: **03/17/26, 12p**

03/25/26, 12p

S/P+A Project #: **23.097**

Bids Due: **03/25/26, 1p**

04/01/26, 1p

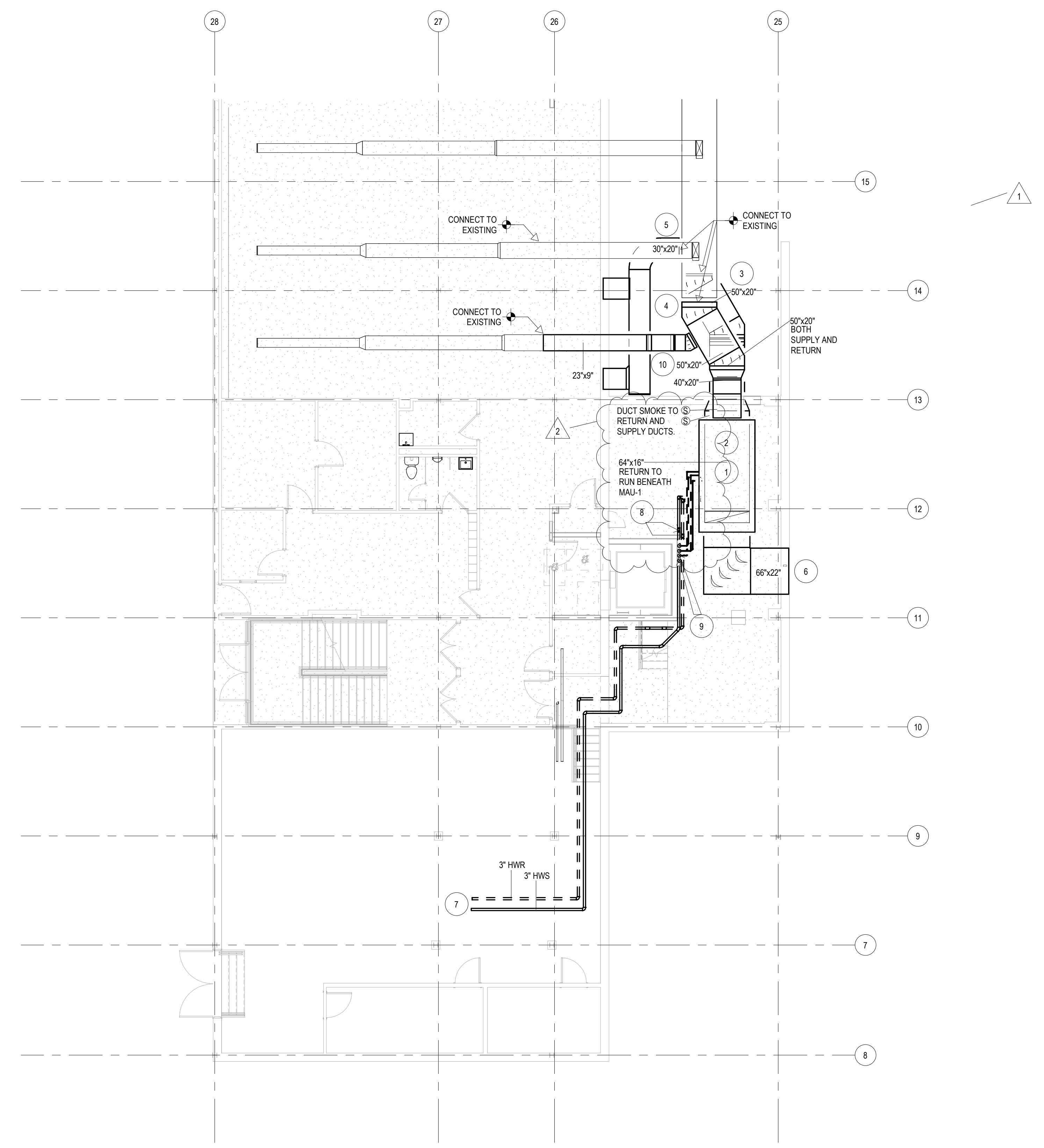
RFI #	QUESTION	DATE RECEIVED	RESPONSE	ADDENDUM # ISSUED
001	The Drawings indicate a quartz counter, with a thickness shown of 1/2". It's pretty rare that a manufacturer offers that thickness in quartz, generally it's 2cm (3/4") or 3cm (1-1/8"). Please advise.	03/16/26	Counter is epoxy as indicated in Section 123553.19. Refer to Addendum #5 for revised Drawing A850.	5
002	It's also a bit rare that quartz is called out instead of solid surface for a project like this, and solid surface is almost always 1/2" thick. Would the architect accept a proposal using 1/2" thick solid surface rather than quartz?	03/16/26	No. Refer to RFI #001.	5
003	When school is in session, can we work off hours?	03/16/26	Typical hours for school operation are 7am-4pm. Custodial staff is on site 6:30am-9pm. Contractors can be accommodated in the building from 4:30-8:30pm without charging for the building to be open. Contractor would need to coordinate with Owner and provide a detailed schedule due to afterschool programs. If this option is used, Contractor will be responsible for leaving the construction site protected on a daily basis as indicated in Section 011000.	5
004	What is the overtime rate for the custodian?	03/16/26	Custodial rate through June 30, 2026: Reg time \$44.25/hr Overtime \$66.35/hr Sunday/Holiday \$88.50/hr Custodial rate starting July 1, 2026: Reg time \$45.35/hr Overtime \$68.80/hr Sunday/Holiday \$90.70/hr	5
005	Please provide the milestone schedule.	03/16/26	Contractor to provide a detailed milestone schedule with their bid. Example of items to include, but not be limited to are elevator pit, elevator shaft, floor penetrations, steel, elevator car, etc.	5
006	How do we maintain the handicapped lift control station when we have to demo and create a new opening in that same location? Where are we to relocate the control station?	03/16/26	Control station to remain in existing location as long as possible. Refer to Addendum #5 for revised Drawing E021.	5
007	Please advise of area(s) for temporary walls to be installed.	03/16/26	Temporary walls are not required however they may be installed at the Contractor's option as it is the Contractor's responsibility to protect the construction area at all times, with extra protection required during the school year or non-construction periods.	5
008	Countertops - Details on A850 call for 1/2" quartz tops and backsplash, but in the spec section 123553.19, calls for Epoxy Resin top with integral sink. The plumbing fixture specs on drawing P501, S-1, calls for a specific manufactured sink.	03/17/26	Refer to RFI #002. Sink specified in Plumbing Fixture Schedule is an integral sink. Refer to Addendum #4 for revised Drawing P501.	5
009	A100 - Elevator shaft shown to go thru an existing concrete beam. S1.1 - shows beam to be an existing B2 16x20. There isn't a section cut through this area. What is happening at this beam?	03/17/26	The existing beam alignment has been adjusted to our understanding of the existing drawing. The intent is the elevator wall will be aligned with the existing beam. Field verification of the proposed layout will be required prior to any demo work to confirm existing conditions align as anticipated. Refer to Addendum #5 for revised Drawing S1.1.	5
010	On drawing A850, the finish schedule - under ceiling finish it shows new ACT-1 with the existing to remain. Is the intent of repairing the flooring and base material scope similar repair to the ACT repair. Are we to patch the floor and base in the areas of work impact. Effected room - M-3, M-13, U-3 & U-17.	03/17/26	Yes, the flooring & base in the stated rooms are to be patched at the affected work areas. Refer to Addendum #5 for revised Drawing A850.	5
011	Can you please quantify the cubic yard of rock/ledge to be removed. Also, what type of rock/ledge (hardness)?	03/17/26	Existing ledge/rock depth, extent & other characteristics (ie: hardness) are unknown & only based on existing documentation as noted on the Structural Drawings. Bidders are to include 35 cubic yards of ledge removal within their bid. Additional geotech information to be provided in forthcoming addendum.	5
012	On S1.1 (Addendum #3), there is a new note to remove portion of existing Concrete wall below slab at existing opening. What is behind this wall? When the wall is removed what is done to the new opening. Will there be enough room to install the new steel 'C-Shape'.	03/17/26	Based on existing documents & limited field access, the space behind the portion of wall to be removed is anticipated to be a void/open space.	5

MECHANICAL PLAN KEYNOTES

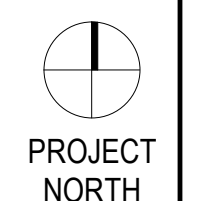
- 1 AIR HANDLING UNIT TO BE INSTALLED 2 TALL FRAME TO ALLOW FOR THE RETURN DUCTWORK TO RUN BENEATH THE UNIT. PROVIDE DUCT TRANSITIONS AND FLEXIBLE CONNECTIONS AT INLET AND DISCHARGE.
- 2 REFER TO DETAIL 1 ON DRAWING M300 FOR ROUTING OF SUPPLY, RETURN, AND OUTSIDE AIR DUCTWORK OFF OF MAU-1.
- 3 SUPPLY AND RETURN DUCTWORK TO TRANSITION ONCE PENETRATING NEW MECHANICAL ROOM WALL TO ALIGN WITH EXISTING SUPPLY AND RETURN TRUNKS. TRANSITION TO BE NO GREATER THAN 30 DEGREES. ONCE ALIGNED, SUPPLY AND RETURN DUCTS TO CONNECT TO EXISTING.
- 4 NEW SUPPLY LINE TO TAP OFF OF EXISTING SUPPLY TRUNK TO SUPPLY EXISTING SUPPLY LINES AND DIFFUSERS IN THE CAFETERIA. CONTRACTOR RESPONSIBLE FOR ALIGNING EXISTING AND NEW CONDITIONS.
- 5 NEW RETURN LINE TO TAP OFF OF EXISTING RETURN TRUNK TO ATTACH TO EXISTING RETURN GRILLE IN CORRIDOR. CONTRACTOR RESPONSIBLE FOR ALIGNING EXISTING RETURN GRILLE AND PENETRATION WITH NEW DUCTWORK.
- 6 OUTSIDE AIR DUCT TO PENETRATE INTO EXISTING AREAWAY. FURNISH PENETRATION WITH LOUVER AND BIRDSCREEN. MODIFY AREAWAY OPENING AS REQUIRED.
- 7 IT IS THE INTENT TO RUN NEW HOT WATER SUPPLY AND RETURN LINES FROM EXISTING STEAM-TO-HOT-WATER HEAT EXCHANGER IN BOILER TO MAU-1.
- 8 HOT WATER SUPPLY AND RETURN LINES TO RISE TO CEILING HERE TO MAINTAIN ACCESS TO SIDE OF MAU-1. BOTH LINES TO DROP TO REQUIRED ELEVATIONS WHEN IN LINE WITH HEATING COIL.
- 9 REFRIGERANT LINES DROPPING FROM ROOF TO STAY FLUSH WITH CEILING TO MAINTAIN ACCESS TO SIDE OF MAU-1. REFRIGERANT LINES TO DROP TO REQUIRED ELEVATIONS WHEN IN-LINE WITH COOLING COIL. LINE SIZES AND CONFIGURATION TO BE CONFIRMED BY THE MANUFACTURER.
- 10 NEW SUPPLY BRANCH DUCT RUNNING TO THE CAFETERIA TO RUN ABOVE NEW RETURN DUCT. NEW SUPPLY BRANCH DUCT TO DROP AND ANGLE AS NEEDED TO CONNECT TO SUPPLY MAIN AS LOCATED ON DRAWING.

MECHANICAL GENERAL NOTES

1. REFER TO DRAWING M001 FOR ADDITIONAL MECHANICAL NOTES.
2. CONTRACTOR TO PROVIDE ALL PENETRATIONS WITHIN WALLS, FLOORS, CEILINGS, ROOF, ETC. NECESSARY TO ACCOMMODATE NEW WORK.
3. CONTRACTOR TO PROVIDE ALL CONTROL DEVICES, RELAYS, SENSORS, PANELS, TRANSFORMERS, LOW VOLTAGE WIRING, PROGRAMMABLE CONTROLLERS, PROGRAMMING, ETC. NECESSARY TO ACHIEVE THE SEQUENCE OF OPERATION INDICATED IN PROJECT MANUAL.
4. EXISTING DUCTWORK TO REMAIN SHALL BE CLEANED, TESTED FOR LEAKAGE, AND SEALED AIR TIGHT.



1 BASEMENT DUCT FLOOR LEVEL
1/8" = 1'-0"



PROJECT TITLE:
**ADA IMPROVEMENTS / ELEVATOR AT:
 WESTERN MIDDLE SCHOOL**
 1 WESTERN JR HIGHWAY
 GREENWICH CT 06830

SILVER PETRUCELLI + ASSOCIATES
 3190 WHITNEY AVENUE HAMDEN CT 06518
 311 STATE STREET NEW LONDON CT 06320
 203 230 9007 silverpetrucci.com

REVISION	DESCRIPTION	DATE	REVISED BY
1	Addendum #3	3/09/2026	NF
2	Addendum #5	3/19/2026	NF

DRAWING TITLE:
MECH BASEMENT FLOOR PLAN

PROJECT SUBMISSION:
ISSUED FOR BID

STATE PROJECT NUMBER:

DATE:
 1/30/2025

SCALE:
 As Indicated

DRAWN BY:
 N. FAWCETT

PROJECT NUMBER:
 23.097

DRAWING NUMBER:
M110

MAKE-UP AIR HANDLING UNIT																																			
TAG	AREA SERVED	MANUFACTURER AND MODEL	ELECTRICAL			SUPPLY AIR FAN				REFRIGERANT COIL										HOT WATER COIL						OUTSIDE AIR FILTRATION			OPERATING WEIGHT (LBS)	NOTES					
			VOLTS/Hz/Ph	MCA	MOCP	CFM	STATIC PRESS		NO OF CIRCUITS	CAPACITY (MBH)	EDB/WB (°F)	LDB/WB (°F)	FACE VEL (FPM)	MAX APD (IN WG)	ROWS	SUC TEMP (°F)	LIQ SIZE	SUC SIZE	CAPACITY (MBH)	EAT (°F)	LAT (°F)	MAX APD (IN WG)	EWT (°F)	LWT (°F)	GPM	MAX WPD (FT HD)	ROWS	PREFILTER TYPE			FINAL FILTERS MID LIFE APD				
							TSP (IN WG)	ESP (IN WG)																								RPM	TOT MBH	SENS MBH	
MAU-1	LOWER LEVEL	TRANE CSA021	208/60/3	75	125	10,500	5.355	2.0	2011	1	600	379.97	87/71	54/52.13	505	1.093	8	44.85	-	-	933.75	8	90	0.169	180	160	93.25	7.71	2	2" PANEL MERV 8	0.65	4" BAG MERV 13	1.48	3,041	ALL

NOTES:

- SUPPLY FAN ESP INCLUDES 1.0 IN WG FOR LOADED FILTERS.
- AUTOMATIC TEMPERATURE CONTROLS COMPONENTS SHALL BE FACTORY INSTALLED BY UNIT MANUFACTURER. PROVIDE FACTORY BACNET INTERFACE FOR CONNECTION TO NEW BUILDING MANAGEMENT SYSTEM TO BE INSTALLED AS WORK OF FUTURE PROJECT. REFER TO SECTION 230900.
- INSTALL UNIT ON STEEL SUPPORT FRAME. SUPPORTS SHALL BE DESIGNED TO RESIST SEISMIC LOADS.
- FURNISH WITH 100% OUTSIDE AIR AND RETURN AIR DAMPERS.
- FURNISH WITH FACTORY DISCONNECT AND VFD FOR SUPPLY FAN.
- SUPPLY FAN MOTOR & DRIVE SHALL BE MOUNTED ON SPRING ISOLATORS.
- PROVIDE FREEZE-STAT ON DISCHARGE SIDE OF HOT WATER COIL.
- REFER TO SPEC SECTION 237416 FOR ADDITIONAL UNIT REQUIREMENTS.

CONDENSING UNIT																											
TAG	SERVES	MANUFACTURER & MODEL	MINIMUM COOLING PERFORMANCE WITH MATCHED COIL								ELECTRICAL			REFRIGERANT PIPING			REFRIGERANT	NUMBER OF COMPRESSORS	NUMBER OF STAGES	OPER. WEIGHT (LBS)	NOTES						
			NOMINAL CAPACITY (TONS)	SENSIBLE CAPACITY (MBH)	SYSTEM SUPPLY (CFM)	COIL EAT (DBWB)	SUCTION TEMP (°F)	AMBIENT AIR TEMP (°F)	MIN EER	MIN IER	VOLTS/Hz/Ph	MCA	MOCP	NO OF CIRCUITS	LINE SIZE EACH CIRCUIT							SUCTION					
															LIQUID	SUCTION											
CU-1A	MAU-1	TRANE INTELLICORE RSLT 25	25	-	10,600	87/71	42.85	95	10.9	15.5	208/60/3	141	200	1	7/8	1-5/8	1-5/8	R454B	2	-	1898	ALL					
CU-1B	MAU-1	TRANE INTELLICORE RSLT 25	25	-	10,600	87/71	42.85	95	10.9	15.5	208/60/3	141	200	1	7/8	1-5/8	1-5/8	R454B	2	-	1898	ALL					

NOTES:

- PROVIDE REFRIGERANT TWO SETS OF LIQUID AND SUCTION LINES FROM CONDENSING UNIT TO MAU COILS. REFER TO MANUFACTURER'S INSTALLATION / APPLICATION MANUAL FOR REFRIGERANT PIPING REQUIREMENTS.
- PROVIDE LIQUID AND SUCTION LINE ISOLATION VALVES AT CONDENSING UNIT AND AIR HANDLING UNIT FOR EACH CIRCUIT.
- PROVIDE EXPANSION VALVE FOR EACH CIRCUIT IN ACCORDANCE WITH MANUFACTURER'S RECOMMENDATIONS.
- REFRIGERANT LINES SIZES AND CONFIGURATION TO BE VERIFIED BY MANUFACTURER.
- INSTALL UNIT ON ROOF EQUIPMENT CURBS WITH NEOPRENE PADS. PROVIDE SEISMIC AND WIND RESTRAINT.
- PROVIDE CONTROL WIRING IN CONDUIT FROM AIR HANDLING UNIT TO CONDENSING UNIT PER MANUFACTURER'S WIRING/CONTROL REQUIREMENTS.
- FOR EACH CIRCUIT, PROVIDE SOLENOID VALVES, THERMAL EXPANSION VALVES AND OTHER REQUIRED REFRIGERANT CIRCUIT COMPONENTS PER SPECIFICATIONS.
- FURNISH UNIT WITH SERVICE OUTLET.
- CU-1A AND CU-1B TO HAVE A MINIMUM OF 10 STAGES OF COOLING BETWEEN BOTH CONDENSING UNITS.
- PROVIDE CONDENSOR WITH EBM FANS.
- PROVIDE WITH MULTI-WING IMPELLER BLADES.
- PROVIDE A COMPRESSOR ENCLOSURE.

DUCT INSULATION SCHEDULE			
SYSTEM	INSULATION TYPE	MINIMUM INSTALLED INSULATION VALUES	NOMINAL DENSITY
INDOOR DUCT/PLENUM CONCEALED SA, RA, OA- OTHER THAN PRE-MANUFACTURED LINEAR SUPPLY AND RETURN GRILLE PLENUMS.	MINERAL FIBER BLANKET	R-6	3/4 LB/FT ³
	MINERAL FIBER BOARD WITH REFLECTIVE VAPOR BARRIER.	R-6	3 LB/FT ³
INDOOR DUCT/PLENUM EXPOSED SA AND RA- LOCATED IN MECHANICAL ROOMS, OTHER NON-OCCUPIED SPACES, NON-AIR CONDITIONED SPACES, PASSING THROUGH AIR CONDITIONED SPACES.	MINERAL FIBER BOARD WITH REFLECTIVE VAPOR BARRIER.	R-6	3 LB/FT ³
INDOOR DUCT/PLENUM EXPOSED OA, ALL SPACES OTHER THAN ATTICS AND CRAWLSPACES	MINERAL FIBER BOARD WITH REFLECTIVE VAPOR BARRIER.	R-6	3 LB/FT ³
INDOOR DUCT/PLENUM EXPOSED SA, RA, OA, EA- ALL ATTIC SPACES AND CRAWL SPACES	MINERAL FIBER BLANKET	R-12	3/4 LB/FT ³
	MINERAL FIBER BOARD WITH REFLECTIVE VAPOR BARRIER.	R-12	3 LB/FT ³
INDOOR DUCT/PLENUM EXPOSED SA AND RA- LOCATED WITHIN THE AIR-CONDITIONED SPACE IT SERVES.	NONE; UNLESS OTHERWISE NOTED ON THE DRAWINGS OR IN THE SPECIFICATION.	--	--
DUCT LINING DUCTS INSTALLED OUTDOORS, ALL ATTIC SPACES AND CRAWL SPACES SA AND RA SA AND RA DUCTWORK WHERE INDICATED ON THE DRAWINGS AND IN THE SPECIFICATION, 15 FT DOWNSTREAM OF SUPPLY FANS, RETURN FANS AND 10 FT DOWNSTREAM OF TERMINAL BOXES WHETHER INDICATED OR NOT.	FIBROUS-GLASS DUCT LINER WITH CLEANABLE COMPOSITE COATING ON AIRSTREAM SIDE. METAL NOSING SHALL BE FURNISHED ON ALL LEADING AND LEAVING EDGES. (REFER TO NOTES #2, #4)	R-12	3 LB/FT ³
DUCT LINING DUCTS INSTALLED IN DOOR SPACES; EXPOSED AND CONCEALED SA OR RA DUCTWORK WHERE INDICATED ON THE DRAWINGS AND IN THE SPECIFICATION, 15 FT DOWNSTREAM OF SUPPLY FANS, RETURN FANS AND 10 FT DOWNSTREAM OF TERMINAL BOXES WHETHER INDICATED OR NOT.	FIBROUS-GLASS DUCT LINER WITH CLEANABLE COMPOSITE COATING ON AIRSTREAM SIDE. METAL NOSING SHALL BE FURNISHED ON ALL LEADING AND LEAVING EDGES. (REFER TO NOTES #2, #4)	R-6	3 LB/FT ³
ABOVEGROUND, OUTDOOR DUCT/PLENUM CONCEALED OR EXPOSED SA, RA, AND OA.	MINERAL FIBER BOARD (REFER TO NOTE #1)	R-12	3 LB/FT ³
BURIED DUCTWORK SUPPLY & RETURN	FIBROUS-GLASS DUCT LINER WITH CLEANABLE COMPOSITE COATING ON AIRSTREAM SIDE. METAL NOSING SHALL BE FURNISHED ON ALL LEADING AND LEAVING EDGES. (REFER TO NOTES #2, #4)	R-12	3 LB/FT ³
EXHAUST AIR SYSTEMS DRYER, LABORATORY FUME HOOD, KILN AND ALL OTHER EXHAUST SYSTEMS WHERE FIRE, SMOKE AND FIRE/SMOKE DAMPERS ARE NOT PERMITTED TO BE INSTALLED WITHIN THE DUCTWORK.	FIRE-RATED BLANKET OR BOARD (REFER TO NOTE #5)	THICKNESS REQUIRED FOR 2-HR FIRE RATING	--

1. FOR OUTDOOR DUCTWORK PROVIDE A PRE-MANUFACTURED SELF ADHERING PRODUCT WITH AN UV RESISTANT, STUCCO EMBOSSED FINISH. WATER VAPOR TRANSMISSION OF THE INSTALLED PRODUCT SHALL BE .020 PERMS OR LESS. PRODUCT SHALL BE SUITABLE FOR CONTINUOUS USE IN LOW TEMPERATURES OF -10°F. MANUFACTURERS SHALL BE SIMILAR TO FLEX-CLAD 400, MFM BUILDING PRODUCTS CORP. OR ALUMAGUARD 60, POLYGUARD PRODUCTS, INC.

2. DUCT LINING SHALL NOT BE INSTALLED WITHIN 10 FT UPSTREAM OR DOWNSTREAM OF A DUCT MOUNTED HUMIDIFIER DISPERSION TUBE OR DISPERSION GRID.

3. INSULATION TYPES INDICATED IN THE SCHEDULE SHALL UNLESS OTHERWISE INDICATED ON THE PLANS OR SPECIFICATIONS.

4. CLOSED CELL, FIBER FREE, ANTI-MICROBIAL COATED, LOW VOC CERTIFIED, MOISTURE AND MOLD RESISTANT DUCT LINING SHALL BE PROVIDED IN DUCTWORK AND EQUIPMENT WITHIN HOSPITAL AND HEALTHCARE FACILITIES AND ROOMS CLASSIFIED AS MOIST OR WET ENVIRONMENTS WHERE THIS SCHEDULE, DRAWINGS AND SPECIFICATION INDICATE DUCT LINING.

5. DUCTWORK SHALL BE FIRE WRAPPED FROM THE APPLIANCE CONNECTION TO THE TERMINATION POINT.

ABBREVIATIONS:
 OA = OUTDOOR AIR DUCTWORK
 SA = SUPPLY AIR DUCTWORK
 RA = RETURN AIR DUCTWORK
 EA = EXHAUST AIR DUCTWORK

PIPE/TUBE INSULATION SCHEDULE						
SYSTEM	LOCATION	PIPE SIZE	CELLULAR GLASS	FLEXIBLE ELASTOMERIC	MINERAL-FIBER TYPE 1	CALCIUM SILICATE
CONDENSATE & EQUIPMENT DRAIN, BELOW 60°F	INDOOR	ALL	1-1/2"	--	1/2"	--
	OUTDOOR	ALL	1-1/2"	--	--	--
REFRIGERANT (ALL) SUCTION, HOT GAS, VAPOR, & LIQUID PIPING	INDOOR	ALL	2"	2"	2"	--
	OUTDOOR	ALL	2"	2"	--	--
REFRIGERANT (ALL) SUCTION, HOT GAS, VAPOR, & LIQUID FLEXIBLE TUBING	INDOOR	ALL	--	2"	--	--
	OUTDOOR	ALL	--	2"	--	--

BLANKS (-) INDICATE INSULATION TYPE SHALL NOT BE USED.
 THICKNESS BASED ON INSULATION HAVING A CONDUCTIVITY (K) NOT EXCEEDING 0.27 BTU PER INCH/HR/°F

1. ALL EXPOSED INDOOR PIPING/TUBING AND FITTINGS WITHIN OCCUPIED SPACES, CORRIDORS, MECHANICAL ROOMS AND OTHER NON-CONCEALED LOCATIONS SHALL BE FITTED WITH PVC FITTING COVERS AND PVC PIPE COVERS FROM THE FLOOR LEVEL TO 12" ABOVE THE FINISHED FLOOR. PVC FITTING AND PIPE COVERS SHALL BE 25/50 FLAME AND SMOKE SPREAD RATED. COVERS AND JACKETING COLOR TO BE SELECTED BY ARCHITECT. PROVIDE TEMPLATE OF JACKET COLORS FOR THE ARCHITECT'S REVIEW.

2. ALL ELBOWS; CONCEALED OR EXPOSED, SHALL BE INSULATED WITH PRE-MOLDED, FACTORY FORMED FIBROUS GLASS WITH 3.5 PPF MINIMUM DENSITY AS MANUFACTURED BY HAMFAB OR APPROVED EQUAL. ALL ELBOWS, CONCEALED OR EXPOSED, SHALL BE COVERED WITH PVC FITTING COVERS. PVC FITTING COVERS SHALL BE 25/50 FLAME AND SMOKE SPREAD RATED. COVER COLOR TO BE SELECTED BY ARCHITECT. PROVIDE TEMPLATE OF JACKET COLORS FOR THE ARCHITECT'S REVIEW.

3. DIAPHRAGM AND LOOSE FILL STYLE INSULATION ON PIPE FITTINGS IS NOT ACCEPTABLE. ELBOWS WITHOUT PVC COVERS ARE NOT ACCEPTABLE.

4. INSULATE ALL COILS MOUNTED IN DUCTWORK OR TERMINAL BOXES. INSULATION THICKNESS SHALL BE EQUAL TO THE ASSOCIATED DUCT INSULATION THICKNESS.

5. ALL OUTDOOR PIPING/TUBING SHALL BE FITTED WITH A PRE-MANUFACTURED ALUMINUM JACKET PRODUCT, 0.024" ALUMINUM JACKET LOCK-ON OR SLIP-ON TYPE JACKETING TO BE COVERED WITH ACRYLIC COATING ON THE OUTER SURFACE AND A BAKED EPOXY MOISTURE BARRIER ON THE INNER SURFACE. MANUFACTURER SHALL BE SIMILAR TO CHILDERS PRODUCTS, DIVISION OF ITW; METAL JACKETING SYSTEMS. ALL EXPOSED JOINTS IN THE JACKET PRODUCT SHALL BE INSTALLED IN SUCH A WAY AS TO PREVENT THE INFILTRATION OF MOISTURE AND WATER.

6. ALL BURIED PIPING/TUBING SHALL BE FITTED WITH A PRE-MANUFACTURED ALUMINUM JACKET PRODUCT, 0.024" ALUMINUM JACKET LOCK-ON OR SLIP-ON TYPE JACKETING TO BE COVERED WITH ACRYLIC COATING ON THE OUTER SURFACE AND A BAKED EPOXY MOISTURE BARRIER ON THE INNER SURFACE. MANUFACTURER SHALL BE SIMILAR TO CHILDERS PRODUCTS, DIVISION OF ITW; METAL JACKETING SYSTEMS.

PROJECT TITLE:
**ADA IMPROVEMENTS / ELEVATOR AT:
 WESTERN MIDDLE SCHOOL**
 1 WESTERN JR HIGHWAY
 GREENWICH CT 06830



SILVER PETRUCCI + ASSOCIATES
 3190 WHITNEY AVENUE HAMDEN CT 06518
 311 STATE STREET NEW LONDON CT 06320
 203 230 9007 silverpetrucci.com

REVISION	DESCRIPTION	DATE	REVISED BY
1	Addendum #3	3/09/2026	NF
2	Addendum #5	3/19/2026	NF

DRAWING TITLE:
MECH SCHEDULES

PROJECT SUBMISSION:
ISSUED FOR BID

STATE PROJECT NUMBER:

DATE:
 1/30/2025

SCALE:
 3" = 1'-0"

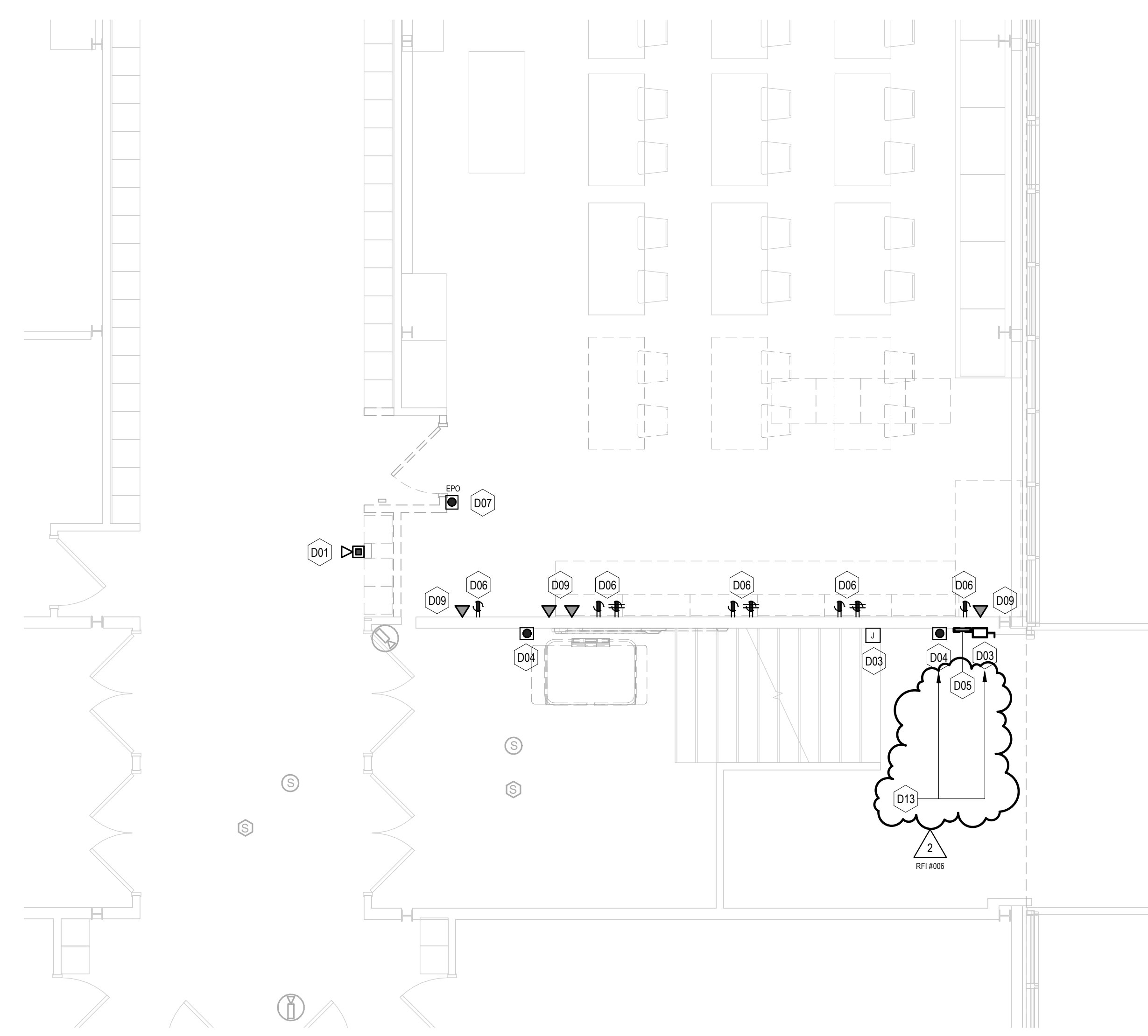
DRAWN BY:
 N. FAWCETT/J. PECKINGHAM

PROJECT NUMBER:
 23.097

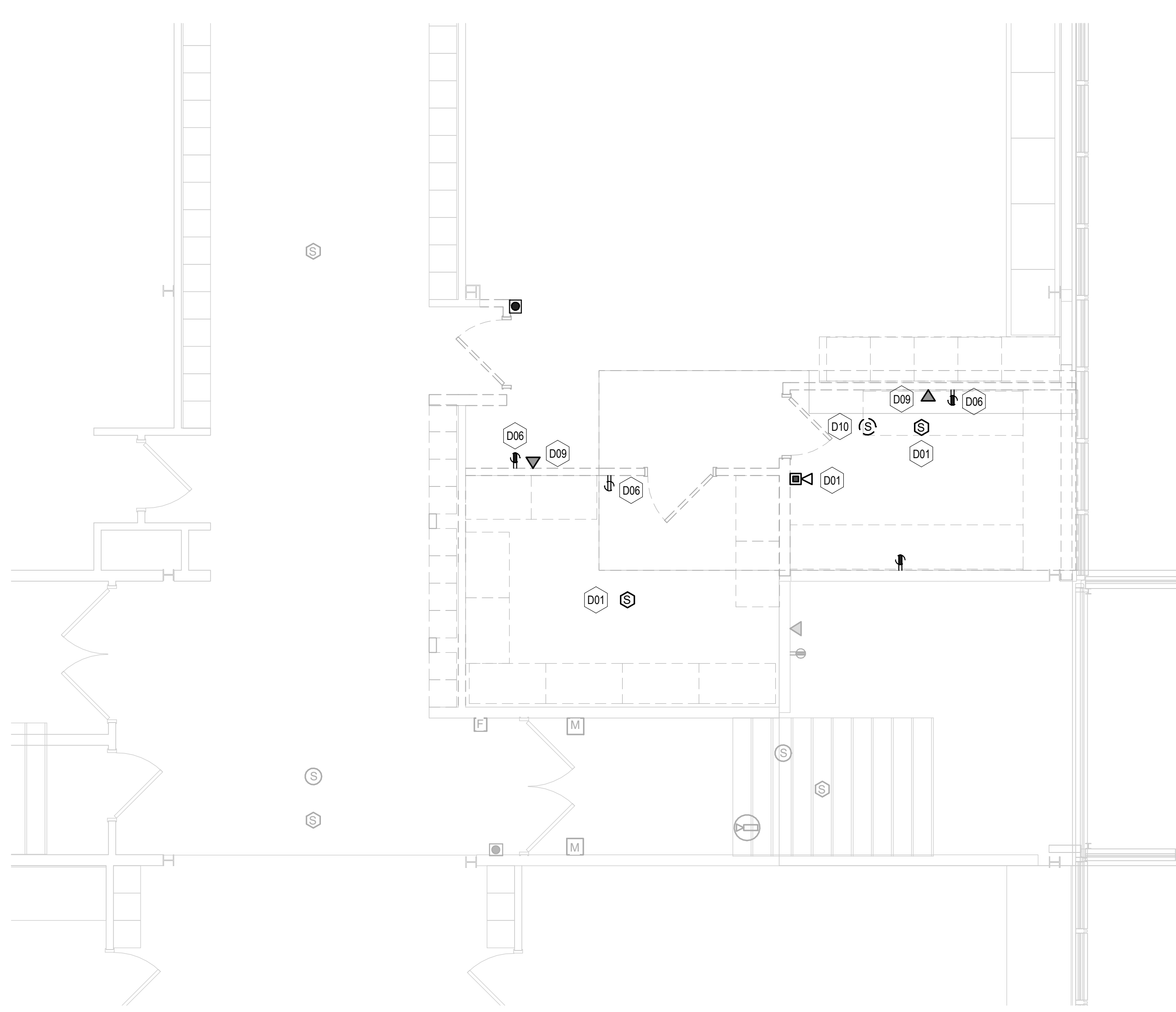
DRAWING NUMBER:
M200



1 PARTIAL LOWER LEVEL DEMOLITION PLAN - POWER
1/4" = 1'-0"



2 PARTIAL MAIN LEVEL DEMOLITION PLAN - POWER
1/4" = 1'-0"



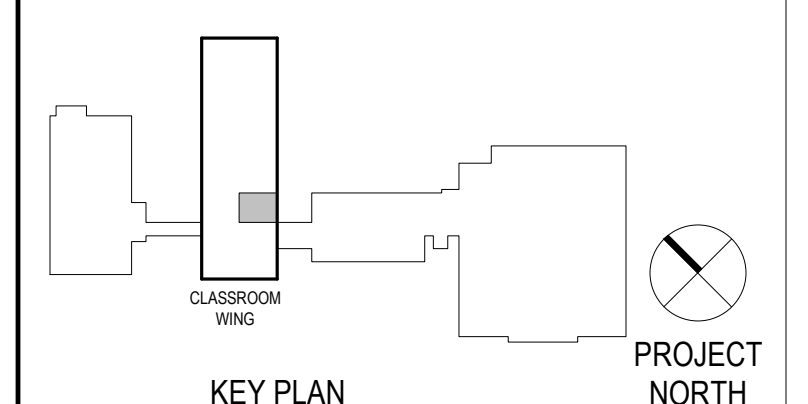
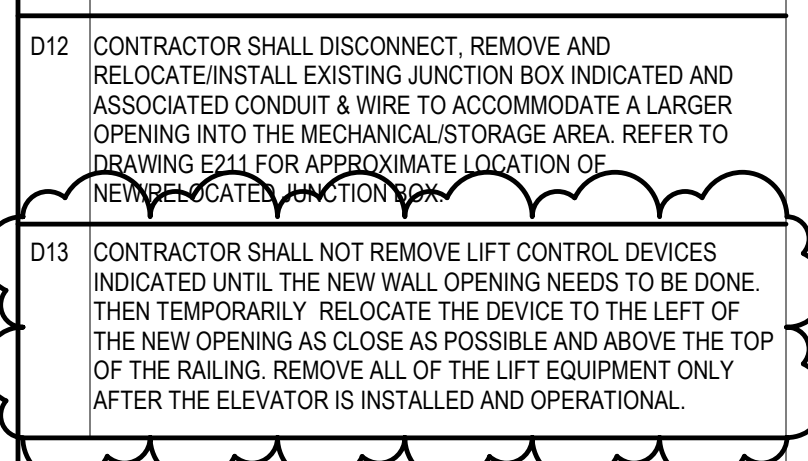
3 PARTIAL UPPER LEVEL DEMOLITION PLAN - POWER
1/4" = 1'-0"

POWER DEMOLITION NOTES

- REFER TO DRAWING E001 FOR ELECTRICAL SYMBOLS, ABBREVIATIONS AND GENERAL NOTES.
- ALL WORK SHALL CONFORM WITH THE ELECTRICAL SPECIFICATIONS AND THE LATEST ACCEPTED NATIONAL ELECTRICAL CODE (NEC).
- ALL EXISTING RECEPTACLES, FIRE ALARM DEVICES, JUNCTION BOXES, SPEAKERS, TELE-DATA RECEPTACLES, SECURITY CAMERAS AND ELECTRICAL EQUIPMENT SHOWN HALF-TONE (LIGHT) ARE EXISTING TO REMAIN AND SHALL REMAIN WIRED. CONTRACTOR IS RESPONSIBLE FOR MAINTAINING THE CONTINUITY OF ALL EXISTING BRANCH CIRCUITS EFFECTED BY THIS RENOVATION AND PROVIDE ADDITIONAL WIRING AS NEEDED.
- ALL EXISTING RECEPTACLES, FIRE ALARM DEVICES, JUNCTION BOXES, SPEAKERS, TELE-DATA RECEPTACLES, SECURITY CAMERAS AND ELECTRICAL EQUIPMENT SHOWN SOLID OR DASHED DARK ARE EXISTING TO BE REMOVED. ALL EXISTING BRANCH CIRCUITS SHALL BE REMOVED BACK TO NEAREST ACCESSIBLE JUNCTION BOX. REFER TO NEW POWER PLAN FOR MORE INFORMATION.
- ALL EXISTING RECESSED DEVICES REMOVED AND NO NEW DEVICES INSTALLED IN THE SAME LOCATION SHALL HAVE A METAL BLANK PLATE INSTALLED OVER THE EXISTING RECESSED BACK BOX AND SHALL BE PAINTED TO MATCH THE EXISTING WALL.

DEMOLITION KEY NOTES

- D01** CONTRACTOR SHALL DISCONNECT, REMOVE AND RELOCATE EXISTING SURFACE AND RECESSED MOUNTED FIRE ALARM DEVICES INDICATED TO BE REMOVED (SHOWN DARK & SOLID OR DASHED). EXISTING WIRING SHALL BE REMOVED BACK TO NEAREST ACCESSIBLE JUNCTION BOX TO SERVE RELOCATED DEVICES IN THIS AREA. REFER TO POWER PLAN FOR NEW LOCATIONS OF THESE DEVICES. ALL FIRE ALARM DEVICES INDICATED TO REMAIN (SHOWN LIGHT & SOLID), ALL ASSOCIATED WIRING SHALL BE MAINTAINED.
- D02** CONTRACTOR SHALL DISCONNECT AND REMOVE EXISTING SURFACE MOUNTED JUNCTION BOX INDICATED AND ALL ASSOCIATED CONDUIT AND WIRING BACK TO POINT OF ORIGIN.
- D03** CONTRACTOR SHALL DISCONNECT AND REMOVE EXISTING SURFACE MOUNTED DISCONNECT SWITCH AND JUNCTION BOX SERVING THE HANDICAP LIFT SYSTEM (LULAI) AND ALL ASSOCIATED CONDUIT AND WIRING BACK TO POINT OF ORIGIN.
- D04** CONTRACTOR SHALL DISCONNECT AND REMOVE EXISTING SURFACE MOUNTED LOCKABLE 4-BUTTON HANDICAP LIFT SYSTEM CONTROL STATION AND ALL ASSOCIATED CONDUIT AND WIRING. ALL RECESSED JUNCTION BOXES THAT REMAIN SHALL HAVE A STAINLESS STEEL COVER PLATE INSTALLED OVER THEM.
- D05** CONTRACTOR SHALL DISCONNECT, REMOVE AND RELOCATE EXISTING SURFACE MOUNTED FIRE ALARM PANEL TO ACCOMMODATE NEW ELEVATOR OPENING. REFER TO POWER PLAN FOR NEW LOCATION OF PANEL.
- D06** CONTRACTOR SHALL DISCONNECT AND REMOVE EXISTING RECEPTACLES INDICATED OR NOT ON WALLS AND MILLWORK TO BE REMOVED (SHOWN DARK & SOLID OR DASHED). EXISTING BRANCH CIRCUIT WIRING SHALL BE REMOVED COMPLETELY UNLESS SERVING OTHER DEVICES TO REMAIN. THEN REMOVE BACK TO NEAREST ACCESSIBLE JUNCTION BOX. RECEPTACLES INDICATED ON WALLS TO REMAIN (SHOWN LIGHT & SOLID) ARE TO STAY AND BRANCH CIRCUITS SHALL BE MAINTAINED. ANY RECESSED DEVICE REMOVED ON AN EXISTING MASONRY WALL TO REMAIN SHALL HAVE THE BACK BOX REMAIN AND HAVE A BLANK STAINLESS STEEL COVER PLATE INSTALLED.
- D07** CONTRACTOR SHALL DISCONNECT, REMOVE AND RELOCATE EXISTING SURFACE MOUNTED EMERGENCY OFF SWITCH WITH KEY RESET SERVING THE GAS VALVE FOR THIS ROOM. REFER TO POWER PLAN FOR NEW LOCATION OF SHUT OFF.
- D08** CONTRACTOR SHALL DISCONNECT AND REMOVE EXISTING DISCONNECT SWITCH IN THIS LOCATION SERVING MECHANICAL UNIT, INCLUDING BUT NOT LIMITED TO DISCONNECT SWITCH, JUNCTION/PULL BOXES, SUPPORT STRUCTURE, AND ALL ASSOCIATED CONDUIT AND WIRING BACK TO POINT OF ORIGIN.
- D09** CONTRACTOR SHALL DISCONNECT AND REMOVE EXISTING SURFACE AND/OR RECESSED MOUNTED VOICE/DATA RECEPTACLE IN THIS LOCATION, INCLUDING BUT NOT LIMITED TO BACK BOX, JACKS, COVER PLATE AND ALL ASSOCIATED CONDUIT AND WIRING BACK TO POINT OF ORIGIN.
- D10** CONTRACTOR SHALL DISCONNECT, REMOVE AND RELOCATE EXISTING RECESSED MOUNTED ROUND CEILING SPEAKER (PAGING SYSTEM) IN THIS LOCATION. REFER TO POWER PLAN FOR NEW LOCATION OF SPEAKER.
- D11** CONTRACTOR SHALL DISCONNECT AND REMOVE EXISTING FIRE ALARM DUCT SMOKE DETECTOR INSTALLED ON DUCT WORK INDICATED TO BE REMOVED INCLUDING ALL CONDUIT AND WIRING BACK TO POINT OF ORIGIN.
- D12** CONTRACTOR SHALL DISCONNECT, REMOVE AND RELOCATE/INSTALL EXISTING JUNCTION BOX INDICATED AND ASSOCIATED CONDUIT & WIRE TO ACCOMMODATE A LARGER OPENING INTO THE MECHANICAL STORAGE AREA. REFER TO DRAWING E011 FOR APPROXIMATE LOCATION OF NEW RELOCATED JUNCTION BOX.
- D13** CONTRACTOR SHALL NOT REMOVE LIFT CONTROL DEVICES INDICATED UNTIL THE NEW WALL OPENING NEEDS TO BE DONE. THEN TEMPORARILY RELOCATE THE DEVICE TO THE LEFT OF THE NEW OPENING AS CLOSE AS POSSIBLE AND ABOVE THE TOP OF THE RAILING. REMOVE ALL OF THE LIFT EQUIPMENT ONLY AFTER THE ELEVATOR IS INSTALLED AND OPERATIONAL.



Project Title:
**ADA IMPROVEMENTS / ELEVATOR ADDITION AT:
 WESTERN MIDDLE SCHOOL**
 1 WESTERN JR HIGHWAY
 GREENWICH CT 06830



SILVER PETRUCELLI + ASSOCIATES
 3190 WHITNEY AVENUE HAMDEN CT 06518
 311 STATE STREET NEW LONDON CT 06320
 203 230 9007 silverpetrucci.com

Revision:	Description:	Date:	Revised By:
1	ADDENDUM #3	03/09/2026	SEC
2	ADDENDUM #5	03/19/2026	SEC

Drawing Title:
DEMOLITION FLOOR PLANS - POWER

Project Submission:
ISSUED FOR BID

State Project Number:
 23.097

Date:
 01/30/2026

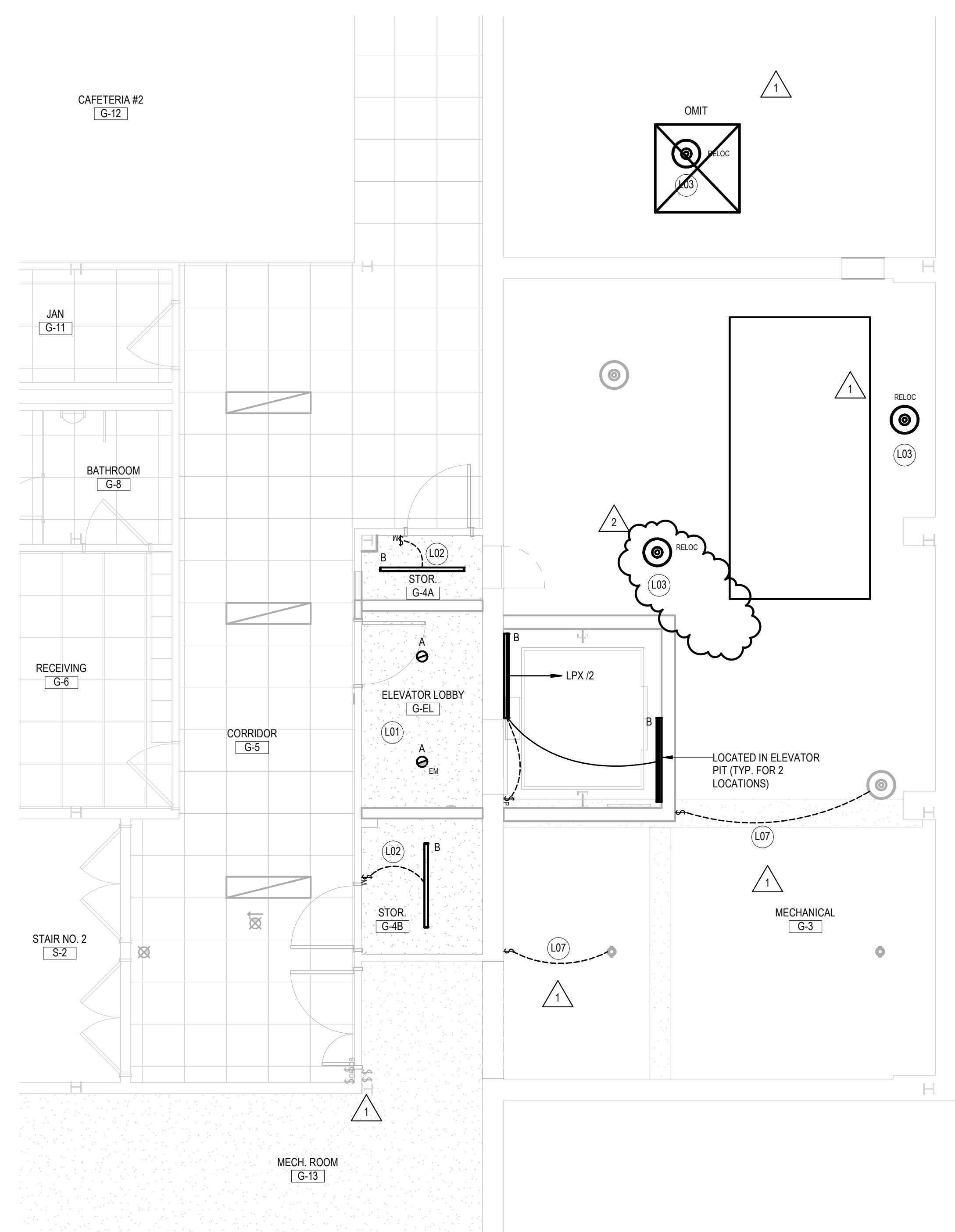
Scale:
 As Indicated

Drawn By:
 S. CROTEAU

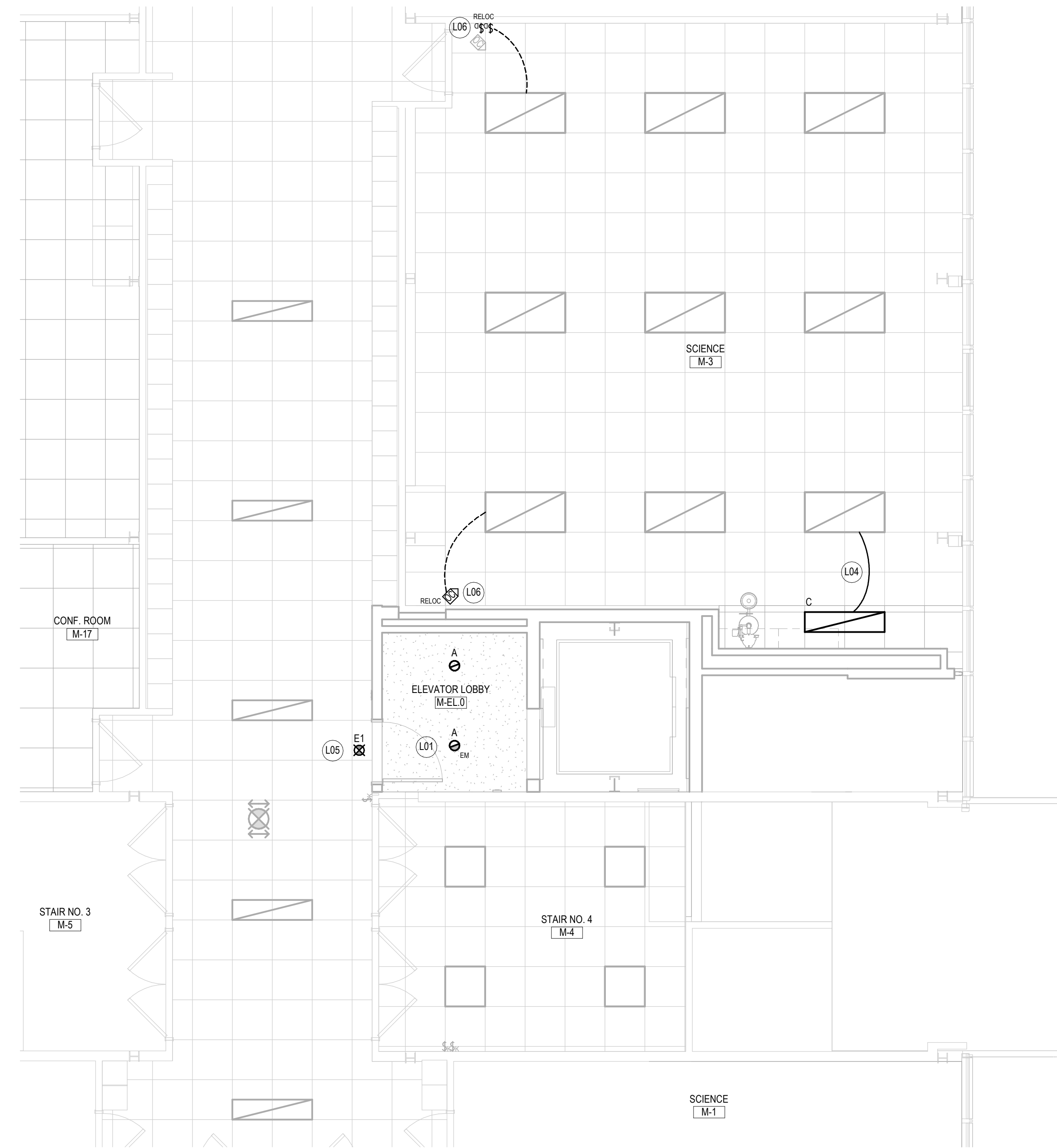
Project Number:
 23.097

Drawing Number:
E021

3/19/2026 9:08:42 AM



1 PARTIAL LOWER LEVEL LIGHTING PLAN
1/4" = 1'-0"



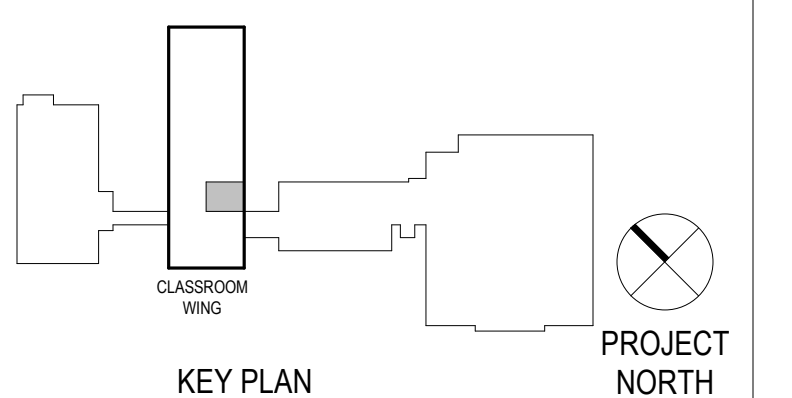
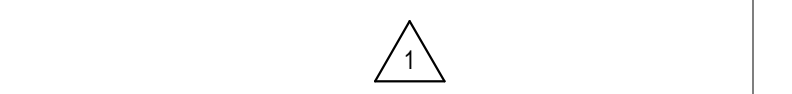
2 PARTIAL MAIN LEVEL LIGHTING PLAN
1/4" = 1'-0"

GENERAL LIGHTING NOTES

- REFER TO DRAWING E001 FOR ELECTRICAL SYMBOLS, ABBREVIATIONS AND GENERAL NOTES.
- ALL WORK SHALL CONFORM WITH THE ELECTRICAL SPECIFICATIONS AND THE LATEST ACCEPTED NATIONAL ELECTRICAL CODE (NEC).
- ALL EXISTING LIGHT FIXTURES, EXIT SIGNS, OCCUPANCY SENSORS AND LIGHT SWITCHES SHOWN HALF-TONE (LIGHT) ARE EXISTING TO REMAIN AND SHALL REMAIN WIRED. CONTRACTOR IS RESPONSIBLE FOR MAINTAINING THE CONTINUITY OF ALL EXISTING BRANCH CIRCUITS EFFECTED BY THIS RENOVATION AND PROVIDE ADDITIONAL WIRING AS NEEDED.
- ALL NEW LIGHT FIXTURES, EXIT SIGNS, OCCUPANCY SENSORS AND LIGHT SWITCHES MOUNTED ON EXISTING CONCRETE WALLS (POURED OR BLOCK) SHALL BE FED WITH SURFACE MOUNTED WIREBOLT RACEWAY, TYPE 90 OR 700 SERIES. PROVIDE ALL NECESSARY ACCESSORIES, CONNECTIONS AND FITTINGS FOR A COMPLETE SYSTEM.
- ALL ROOMS/AREAS THAT HAVE BOTH NORMAL AND EMERGENCY LIGHT FIXTURES EXCEPT BATHROOMS, SHALL BE CONTROLLED TOGETHER VIA A DIMMABLE 924 RELAY UNLESS OTHERWISE NOTED. BATHROOMS SHALL BE CONTROLLED BY A STANDARD NON-DIMMABLE 924 RELAY INSTEAD.

LIGHTING KEY NOTES

- L01** CONTRACTOR SHALL WIRE BOTH THE NORMAL AND EMERGENCY FIXTURES IN THIS ROOM FROM THE EXISTING BRANCH CIRCUITS SERVING THIS AREA VIA A 924 RELAY. THESE FIXTURES SHALL BE CONTROLLED WITH THE ADJACENT CORRIDOR LIGHTS (COME ON BEFORE SCHOOL OPENS AND GO OFF AFTER SCHOOL CLOSES).
- L02** CONTRACTOR SHALL WIRE THE FIXTURE(S) IN THIS ROOM TO THE EXISTING NORMAL BRANCH CIRCUIT THAT SERVES THIS AREA. FURNISH AND INSTALL NEW CONTROL WIRING AS INDICATED ON PLAN.
- L03** CONTRACTOR SHALL WIRE EXISTING RELOCATED LIGHT FIXTURE TO EXISTING BRANCH CIRCUIT AND CONTROL WIRING THAT SERVES THE OTHER LIGHTS IN THIS ROOM.
- L04** CONTRACTOR SHALL WIRE NEW LIGHT FIXTURE IN THIS ROOM TO EXISTING BRANCH CIRCUIT AND CONTROL WIRING THAT SERVES THE OTHER LIGHTS IN THIS ROOM.
- L05** CONTRACTOR SHALL WIRE 'AREA OF REFUGE' SIGN TO UNSWITCHED SIDE OF EXISTING GENERATOR (EMERGENCY) LIGHTING CIRCUIT CURRENTLY SERVING CORRIDOR LIGHTING FIXTURES.
- L06** CONTRACTOR SHALL INSTALL EXISTING RELOCATED LIGHT SWITCHES AND OCCUPANCY SENSOR TO LOCATIONS INDICATED AND INSTALL NEW CONTROL WIRING FROM THESE DEVICES TO THE EXISTING LIGHT FIXTURES TO REMAIN AND MATCH PREVIOUS CONTROL SEQUENCE.
- L07** CONTRACTOR SHALL RECONNECT/EXTEND EXISTING BRANCH CIRCUIT AND CONTROL WIRING FROM LIGHT FIXTURE TO NEW LIGHT SWITCH INDICATED. SWITCH CONTROLS THE EXISTING AND/OR RELOCATED LIGHTS PREVIOUSLY CONTROLLED BY THE SWITCH REMOVED IN THIS AREA.



Project Title:
**ADA IMPROVEMENTS / ELEVATOR ADDITION AT:
 WESTERN MIDDLE SCHOOL**
 1 WESTERN JR HIGHWAY
 GREENWICH CT 06830



SILVER PETRUCELLI + ASSOCIATES
 3190 WHITNEY AVENUE HAMDEN CT 06518
 311 STATE STREET NEW LONDON CT 06320
 203 230 9007 silverpetrucci.com

Revision:	Description:	Date:	Revised By:
1	ADDENDUM #3	03/09/2026	SEC
2	ADDENDUM #5	03/19/2026	SEC

Drawing Title:
**LOWER & MAIN LEVEL FLOOR PLANS -
 LIGHTING**
 Project Submission:
ISSUED FOR BID
 State Project Number:

Date: 01/30/2026
 Scale: As Indicated
 Drawn By: S. CROTEAU
 Project Number: 23.097

E111

(To be submitted in duplicate)

BIDDER:

Name

Address

To: **Purchasing Department
101 Field Point Road
Greenwich, CT 06830**

Project: **Western Middle School ADA Improvements/Elevator
1 Western Jr Highway
Greenwich, CT 06830
Bid #2569-26**

In preparing this bid, we have carefully examined the Bidding Documents for this Project. We have visited the site and noted the conditions affecting the Work.

The Bidding Documents referred to include Drawings and Project Manual dated January 30, 2026, prepared by Silver/Petrucci + Associates, Inc., Hamden, Connecticut.

We propose to perform the work described in the Bidding Documents, in keeping with definitions of Article 1 of the Instructions to Bidders, for the Base Bid Sum as follows:

Base Bid:

Entire Project for the Total Cost of:

\$ _____ Dollars (\$) .00).
written figure

We will commence work on the project _____ calendar days after receipt of "Notice to Proceed" or signing of Contract, whichever is sooner. We will be able to substantially complete the project within _____ calendar days thereafter. (Also refer to SIB 1.1.B).

Unit Prices:

As required by the Base Bid, should deteriorated or damaged materials be required to be removed as determined by the Architect or Owner, the cost to remove and replace the referenced material, (or credit for specified material not provided or installed) including all labor, material, equipment, and related furnishings is as follows:

Item	Description	Unit Price
1.	Small containment preparation containment (less than 160 square/260 linear feet of asbestos-containing material) <small>Pricing for containments with larger amounts of materials are to be INCLUDED in the unit prices themselves listed below. There is no separate unit price for containments with larger amounts</small>	\$ containment
2.	Cove base and adhesives (multiple layers, including contaminated substrates), removal and disposal as ACM	\$ If

Item	Description	Unit Price
3.	Floor tile/flooring materials and mastics (includes all layers of carpeting, adhesives, multiple layers of floor tiles/flooring materials/linoleum/rolled gym flooring/sheet flooring/vinyl flooring/wood/mastics, levelastics, contaminated flooring materials, etc.), removal and disposal as ACM	\$ sf
4.	Mudded pipe fitting insulation, removal and disposal as ACM	\$ fitting/joint
5.	Glove bag, removal and disposal as ACM	\$ bag
6.	Pipe and pipe fitting insulation, removal and disposal as ACM	\$ lf
7.	Floor spacer material (including contaminated substrates), removal and disposal as ACM	\$ lf
8.	Duct insulation (including contaminated substrates), removal and disposal as ACM	\$ sf
9.	Duct adhesives (including contaminated substrates), removal and disposal as ACM	\$ sf
10.	Duct seam/flange sealants (including contaminated substrates), removal and disposal as ACM	\$ lf
11.	Duct vibration isolation cloth, removal and disposal as ACM	\$ cloth
12.	Light backing paper insulation, removal and disposal as ACM	\$ light fixture
13.	Electrical insulation, removal and disposal as ACM	\$ lf
14.	Laboratory sink undercoating, removal and disposal as ACM	\$ sink
15.	Fire door/insulation, removal and disposal as ACM	\$ door
16.	Laboratory countertop/adhesive/caulking compounds, removal and disposal as ACM	\$ sf
17.	Transite cement board, removal and disposal as ACM	\$ sf
18.	Wall adhesives including contaminated substrates (mirrors/blackboards/bulletin boards/wood/wall tiles, etc.), removal and disposal as ACM	\$ sf
19.	Vermiculite and associated wall/ceiling materials (including contaminated substrates), removal and disposal as ACM	\$ sf
20.	Wall/Ceiling plaster (multiple layers) and supporting systems and contaminated substrates, removal and disposal as ACM	\$ sf
21.	Wall/Ceiling board/sheetrock/taping/joint compounds (multiple layers), removal and disposal as ACM	\$ sf
22.	Wall, ceiling tile, glue daubs and contaminated substrates, removal and disposal as ACM	\$ sf
23.	Dampproofing/Tars/Mastics – interior/exterior walls/floors/slab/foundations and associated substrate/adjacent materials (includes multiple layers, contaminated materials and substrates), removal and disposal as ACM	\$ sf of walls
		\$ sf of slabs
		\$ sf of foundations
24.	Caulking, glazing and sealant compounds (includes substrate and contaminated materials), removal and disposal as ACM	\$ lf
		\$ window opening (multiple windows/sizes exist in openings)

Item	Description	Unit Price
		\$ door opening (multiple doors/sizes exist in openings)
25.	Caulking, glazing, and sealant compounds, removal and disposal as PCB >50ppm (PCB Bulk Product Waste)	\$ lf
		\$ window opening (multiple windows/sizes exist in openings)
		\$ door opening (multiple doors/sizes exist in openings)
26.	Caulking, glazing, and sealant compounds, removal and disposal as ACM and PCB >50ppm (PCB Bulk Product Waste)	\$ lf
		\$ window opening (multiple windows/sizes exist in openings)
		\$ door opening (multiple doors/sizes exist in openings)
27.	Roofing core/field base material (includes multiple layers and substrates), removal and disposal as ACM	\$ sf
28.	Roof and gutter flashing (includes multiple layers and substrates), removal and disposal as ACM	\$ sf
29.	Bedrock/Ledge cutting and removal (including labor, equipment, disposal, protection of adjacent construction, and restoration)	\$ cy

If written notice of the acceptance of this Bid is mailed, telegraphed, or delivered to the undersigned at the Address designated below, within ninety (90) days after the date of Bid Opening, or any time thereafter before this Bid is withdrawn, the undersigned will, within ten (10) days after the date of mailing, telegraphing, or delivering of the notice, execute and deliver a contract in the Standard Form of Agreement Between the Owner and Contractor, AIA Document A101, or similar contract modified as may be mutually agree upon.

The undersigned acknowledges that he has examined the documents, visited and examined the site as required under "Instructions to Bidders", examined the availability of labor and materials and further agrees to comply with all the requirements as to the conditions of employment and wage rates set forth by the State of Connecticut Department of Labor.

Addenda:

The undersigned acknowledges receipt of the following addenda to the Contract Documents, listed by number and date:

Number , Dated: _____
 Number , Dated: _____

Number , Dated: _____
 Number , Dated: _____

Exceptions: _____

ATTACHMENTS – Attached hereto is:

- Bid Bond**

2. **Contractor Prequalification Statement**
3. **Update Bid Statement**
4. **Non-Collusive Statement/Code of Ethics**
5. **Bidder Information**
6. **Insurance Procedures**

Signature: _____

Date: _____

Printed Name and Title
of Agent submitting bid: _____

Name of Company: _____

Address: _____

Telephone Number: _____

Fax Number: _____

E-mail: _____

This Bid may be withdrawn prior to the scheduled Bid Opening or any postponement thereof.

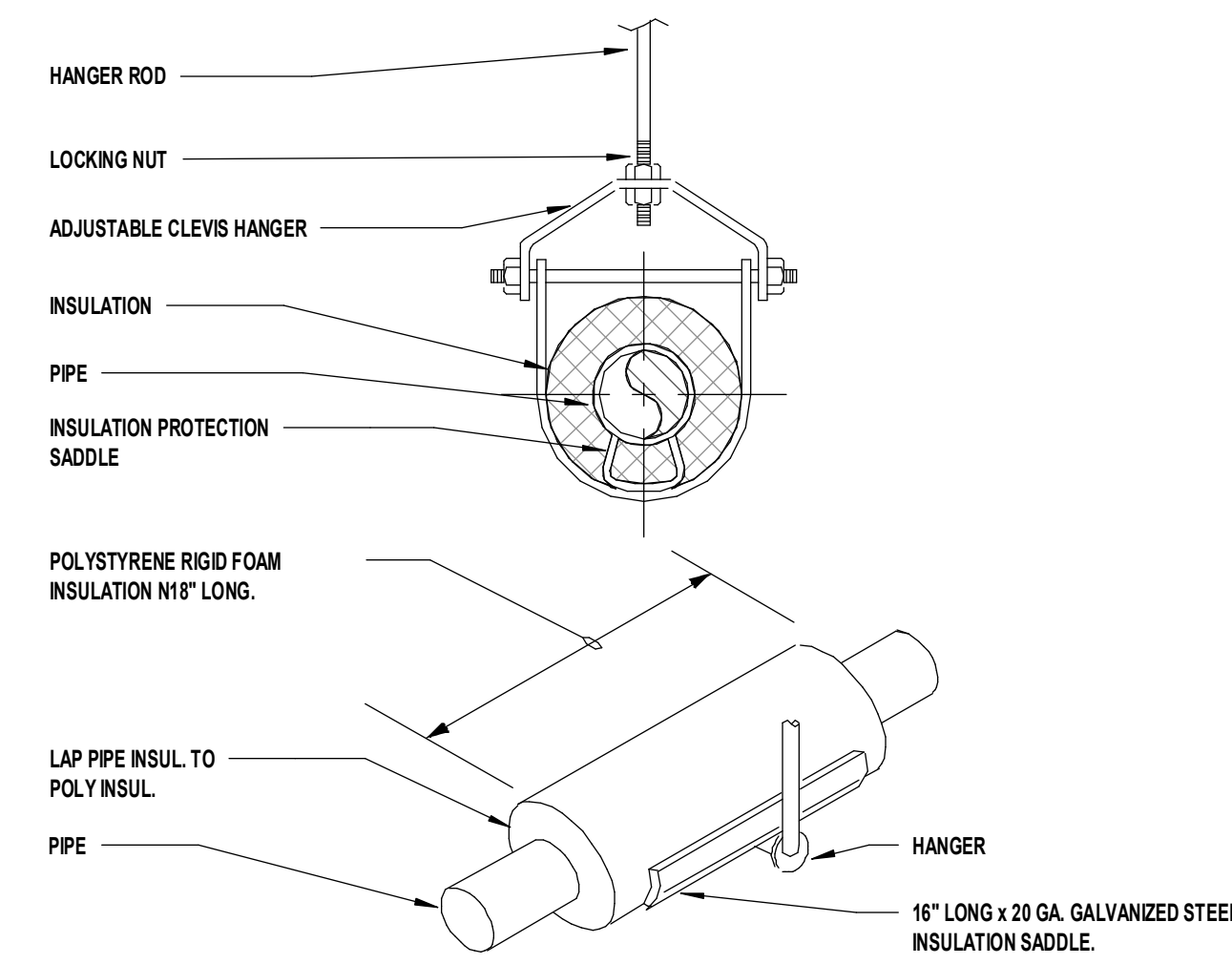
PIPE AND FITTING SCHEDULE						
DESCRIPTION	SIZE	PIPE		FITTING		REMARKS
		TYPE	SCHEDULE	TYPE	RATING	
SOIL, WASTE AND VENT ABOVE GROUND	ALL	CH-NH	SV	CI	SV	4 BAND FOR 4" AND SMALLER 6 BAND FOR LARGER THEN 4"
STORM ABOVE GROUND	ALL	CH-NH	SV	CI	SV	4 BAND FOR 4" AND SMALLER 6 BAND FOR LARGER THEN 4"
DOMESTIC COLD WATER WITHIN BUILDING	ALL	COPPER	TYPE L	CUS	STD	HARD TEMPERED
DOMESTIC HOT WATER WITHIN BUILDING	ALL	COPPER	TYPE L	CUS	STD	HARD TEMPERED
DOMESTIC HOT WATER RECIRCULATION WITHIN BUILDING	ALL	COPPER	TYPE L	CUS	STD	HARD TEMPERED
GAS PIPING	2" AND SMALLER	STL-BLK	SCH. 40	MIT	CLASS 150	-

NOTES:
1. TRANSITION COUPLINGS AND NO-HUB PIPE SHALL NOT BE INSTALLED BELOW SLAB OR IN ANY BURIED CONDITIONS IN CONTACT WITH EARTH
2. ALL PIPING IN RETURN AIR CEILING PLENUM INSTALLATIONS SHALL BE UL LISTED FOR THIS APPLICATION
3. MECHANICAL JOINTS ARE ALLOWED FOR SERVICE. PURPOSED ONLY IN WALLS AND CEILING BUT MUST BE READILY ACCESSIBLE. 2550 PVDF IS UL LISTED FOR RETURN AIR CEILING PLENUM INSTALLATIONS

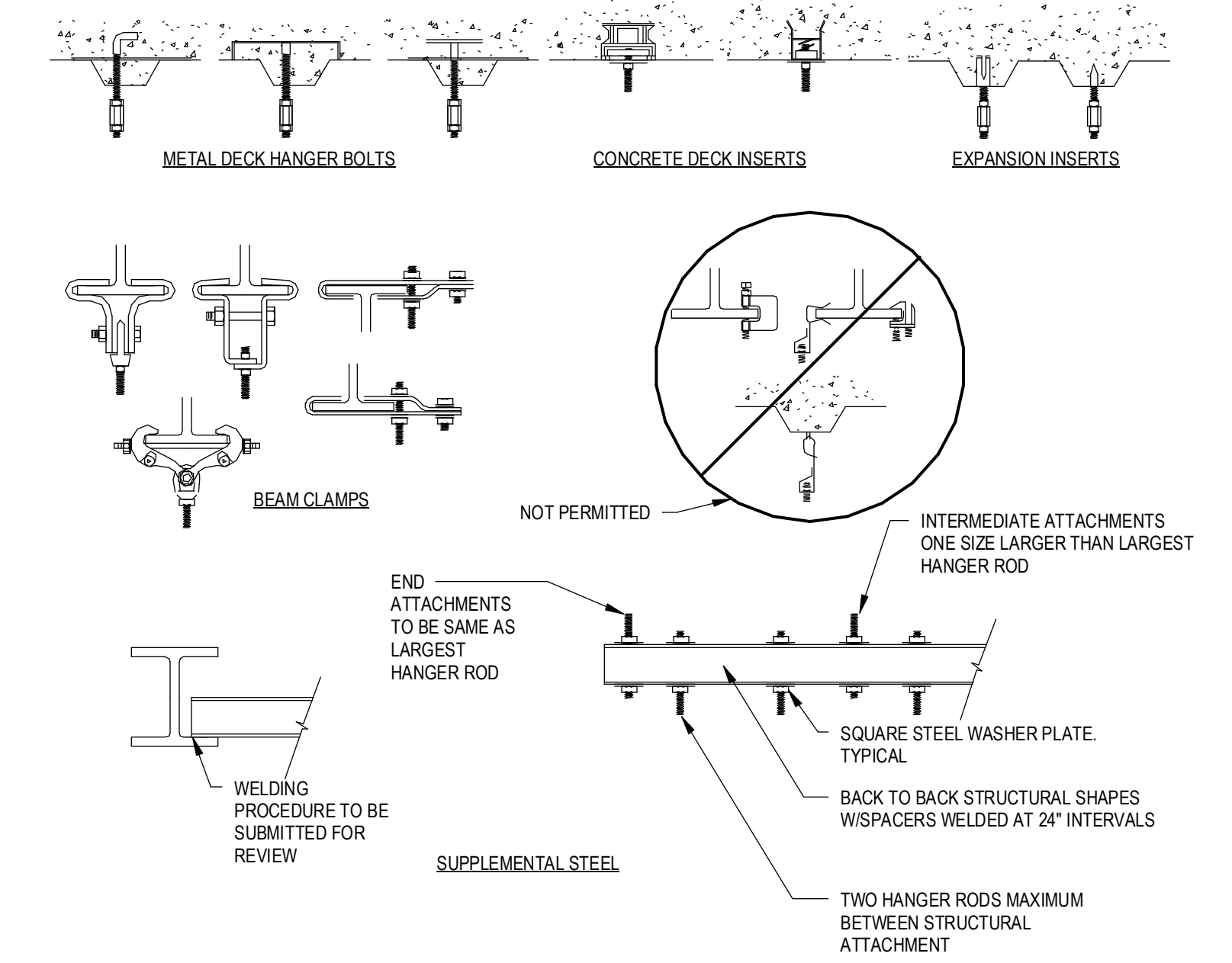
ABBREVIATIONS	DESCRIPTION	ABBREVIATIONS	DESCRIPTION
AWWA	AMERICAN WATER WORKS ASSOCIATION	MIT	MALLEABLE IRON THREADED
CI	CAST IRON	NH	NO HUB WSUPER DUTY HUSKY SD 4000 CLAMP
CUS	WROUGHT COPPER SOLDER (95%)	STD	STANDARD
GS	GALVANIZED STEEL	STL-BLK	BLACK STEEL
H&S	HUB AND SPIGOT	SV	SERVICE WEIGHT
MJ	MECHANICAL JOINT	TJ	THREADED JOINTS

PIPE HANGER SPACING TABLE			
PIPE MATERIAL	PIPE SIZES (INCHES)	HORIZONTAL PIPE MAX HANGER DISTANCE (FT)	VERTICAL PIPE MAX HANGER DISTANCE (FEET)
COPPER & COPPER ALLOY TUBING	1-1/4" & SMALLER	6'-0"	10'-0"
COPPER & COPPER ALLOY TUBING	1-1/2" & LARGER	10'-0"	10'-0"
COPPER & COPPER ALLOY PIPE	ALL	12'-0"	10'-0"
CAST IRON PIPE	ALL	5'-0"	15'-0"
STEEL PIPE	ALL	12'-0"	15'-0"
PVC PIPE	ALL	4'-0"	10'-0"

NOTES:
* MAXIMUM HORIZONTAL SPACING OF CAST IRON PIPE HANGERS SHALL BE INCREASED TO 10'-0" WHERE 10'-0" LENGTHS OF PIPE ARE USED
** MIDSTORY GUIDE FOR SIZES 2" AND SMALLER
NOT ALL PIPE MATERIALS ON THIS TABLE WILL PERTAIN TO THIS PROJECT



1 CLEVIS HANGER WITH SADDLE DETAIL
NTS



2 PIPE HANGER ATTACHMENT DETAIL
12" = 1'-0"

VALVE SCHEDULE								
DESCRIPTION	SIZE	TYPE					CLASS	REMARKS
		GATE	GLOBE	CHECK	BALL	PLUG		
DOMESTIC COLD WATER	3" AND SMALLER	GVT	GLVT	CVT	BVT	--	--	125PSI --
DOMESTIC HOT WATER	3 AND SMALLER	GVT	GLVT	CVT	BVT	--	CBV	125PSI --
DOMESTIC COLD WATER	4" AND LARGER	GVF	--	CVF	--	--	--	125PSI --
DOMESTIC HOT WATER	4" AND LARGER	GVF	--	CVF	--	--	CBV	125PSI --
GAS	2" AND SMALLER	--	--	--	--	PGVT	--	125PSI --
GAS	2-1/2" AND LARGER	--	--	--	--	PGVF	--	125PSI --

NOTES:
1. SOLENOID VALVE: UL LISTED, FM APPROVED FOR GAS SERVICE, EXPLOSION PROOF, TWO-WAY NORMALLY CLOSED, ASCO 8044 SERIES W/ANNUAL RESET (EMERGENCY GAS SHUT-OFF VALVE ASSEMBLY)
2. CALIBRATED PRESSURE RELIEF VALVE: INSTALL A MINIMUM OF 12" ABOVE WATER HEATER AND PIPE DISCHARGE TO ADEQUATE LOCATION, WATTS MODEL 540C

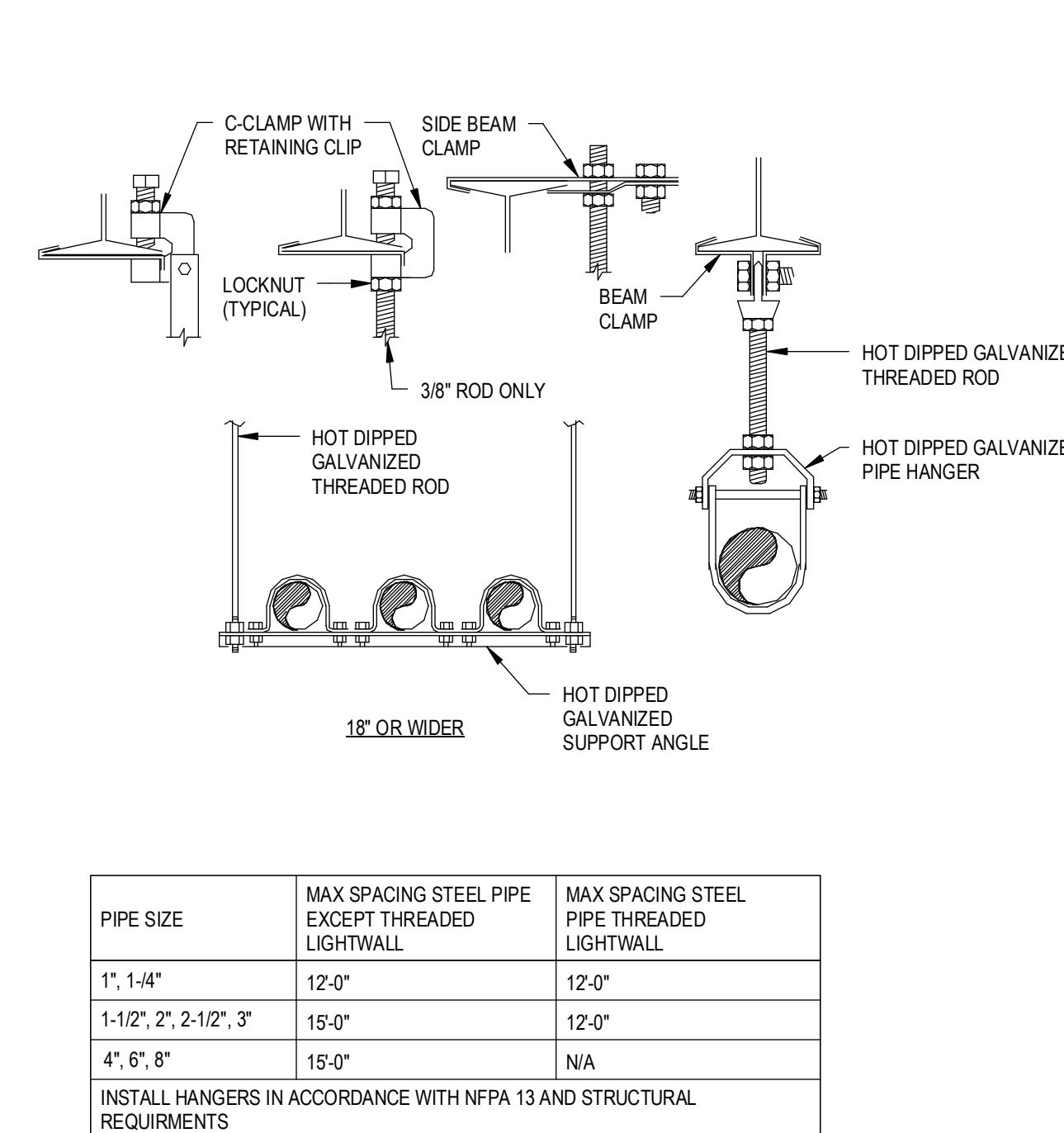
ABBREVIATION	DESCRIPTION	ABBREVIATION	DESCRIPTION
BVF	BALL VALVE FLANGED - FULL PORT, BRONZE	CVF	CHECK VALVE FLANGED - IMMB
BVA	BALL VALVE COMPRESSED AIR - 3-PIECE, FULL PORT, BRONZE	CVT	CHECK VALVE THREADED - BRONZE
BVT	BALL VALVE THREADED - 2-PIECE, FULL PORT, 400PSI, BRONZE	GVF	GATE VALVE FLANGED - IMMB
CBV	CALIBRATED BALANCING VALVE - BRONZE	GVT	GATE VALVE THREADED - BRONZE
CPRV	CALIBRATED PRESSURE RELIEF VALVE	PGVF	PLUG VALVE FLANGED - AGA APPROVED
PGVT	PLUG VALVE THREADED - AGA APPROVED	PGVT	PLUG VALVE THREADED - AGA APPROVED
BVM	BALL VALVE MEDICAL - CLEANSED FOR OXYGEN SERVICE, 3-PIECE, FULL PORT, BRONZE		

INSULATION SCHEDULE					
SYSTEM	PIPE SIZE	INSULATION TYPE	INSULATION THICKNESS	FITTINGS, VALVES, FLANGES INSULATION TYPE	REMARKS
DOMESTIC COLD WATER	ALL	MINERAL FIBER, ASJ, SSL	1"	MOLDED, PRE-FORMED MINERAL FIBER WITH PVC JACKET	TYPE 1
DOMESTIC HOT WATER	< 1-1/2	MINERAL FIBER, ASJ, SSL	1"	MOLDED, PRE-FORMED MINERAL FIBER WITH PVC JACKET	TYPE 1
DOMESTIC HOT WATER	> 1-1/2	MINERAL FIBER, ASJ, SSL	1 1/2"	MOLDED, PRE-FORMED MINERAL FIBER WITH PVC JACKET	TYPE 1
DOMESTIC WATER UNDERGROUND & INSLAB	ALL	CLOSED CELL	1"	ARMAFLEX	--
CONDENSATE	ALL	MINERAL FIBER, ASJ, SSL	1/2"	MOLDED, PRE-FORMED MINERAL FIBER WITH PVC JACKET	TYPE 1
INTERIOR ROOF DRAIN PIPING	ALL	MINERAL FIBER, ASJ, SSL	1"	MOLDED, PRE-FORMED MINERAL FIBER WITH PVC JACKET	TYPE 1 INCLUDE ROOF DRAIN BODY

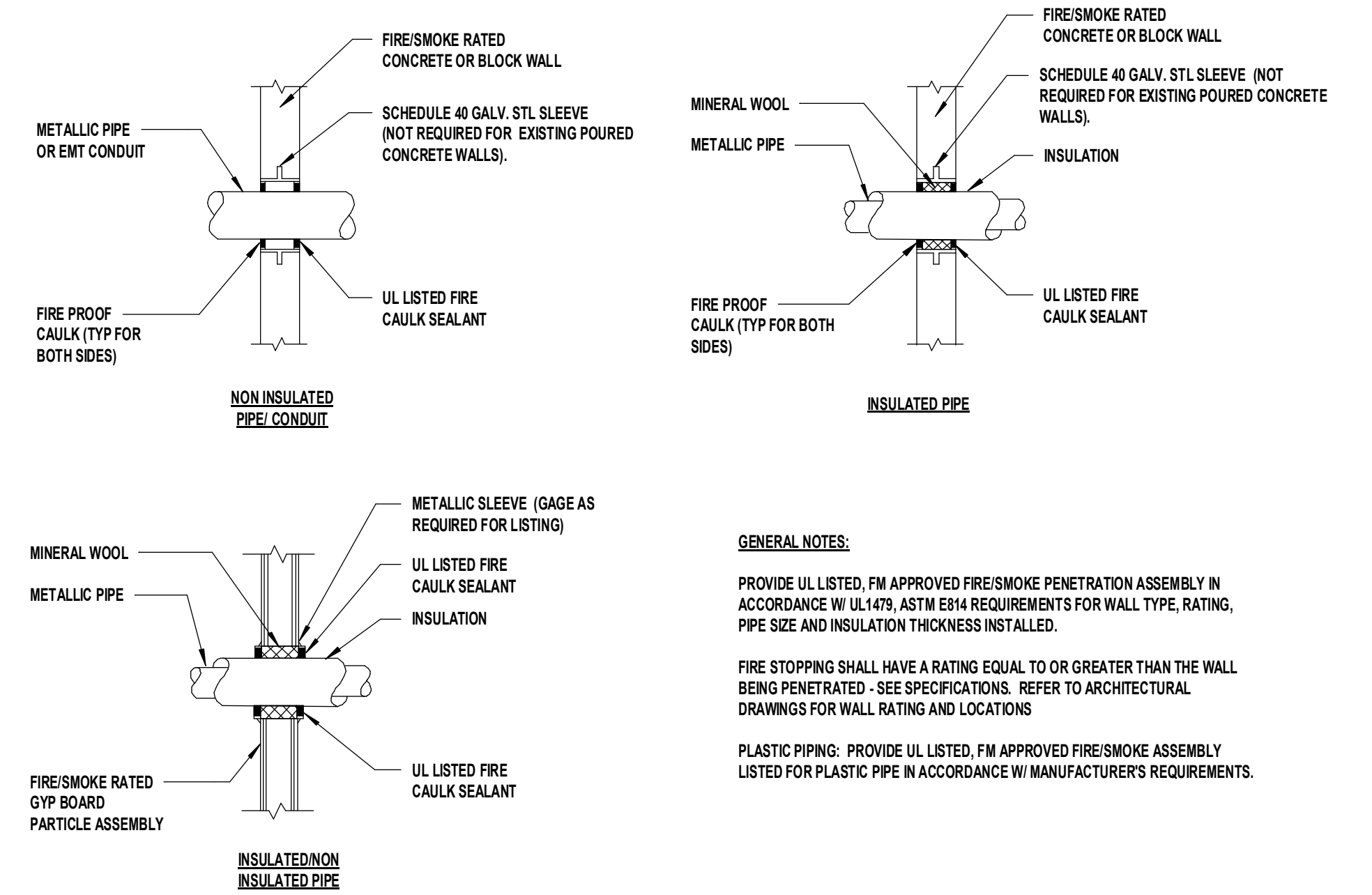
NOTES:
1. FIBERGLASS INSULATION: THERMAL CONDUCTIVITY 22 TO 28BTU x IN./H x FT x 1" F W 100°F MEAN TEMP. THICKNESS BASED ON ASHRAE 90.1, 1999 6.2.4.5
2. REFER TO SPECIFICATIONS FOR ADDITIONAL REQUIREMENTS
3. ALL KITCHEN WASTE SHALL BE HEAT TRACED FROM FIXTURE TO THE GREASE INTERCEPTOR

PLUMBING FIXTURE / EQUIPMENT SCHEDULE					
MARK	FIXTURE, MODEL NUMBER AND DESCRIPTION	ROUGH-IN			
		WASTE/ SANITARY	VENT	CW	HW
	PLUMBING CONTRACTOR TO COORDINATE FIXTURE HEIGHT, TYPE, ETC. WITH ARCHITECTURAL TOILET PLANS.				
EE/WSH	EMERGENCY SHOWER AND EYE WASH. HAWS 8309WC BARRIER-FREE-COMBINATION SHOWER AND EYEWASH WASH HEADS A 10" ABS PLASTIC SHOWERHEAD AND A STAINLESS STEEL RECEPTOR WITH THIN ABS PLASTIC FEATHER-FLD EYEWASH WASH HEADS A PULL ROD ACTIVATES SHOWER. PUSH FLAG ACTIVATES EYEWASH. PIPE AND FITTING: 1 1/4" SCHEDULE 40 HOT DIPPED GALVANIZED STEEL. SUPPLY AND WASTE: 1-1/4" IPS. TEMPERED WATER BLENDING VALVES: HAWS MODEL 5002 THERMOSTATIC MIXING VALVE THAT MIXES HOT AND COLD WATER FOR THE TEMPERING OF WATER FOR EYEWASH AND SHOWERS. MAXIMUM FLOW RATE IS 40 GPM.	1-1/2"	1-1/2"	1-1/4"	1-1/4"
S-1	LABORATORY SCIENCE SINK, ACID RESISTANT DURACON MATERIAL SINK & COUNTERTOP FURNISHED & INSTALLED BY DUE (12) PROVIDE WITH DRAIN TAILPIECE ASSEMBLY. PROVIDE ANGLE STOPS & SUPPLIES (CHROME PLATED METAL); FAUCET, CHICAGO 903 SERIES 800-VR317SAM, SINGLE HOLE, CHROME FINISH, COUNTER MOUNTED FAUCET, SWING VACUUM BREAKER DROUGHT, WRIST BLADE HANDLES, MIXING VALVE: CHICAGO FAUCETS 131-ABNF. MOUNT AT ACCESSIBLE HEIGHT PER ARCHITECTURAL DRAWINGS.	1-1/2"	1-1/2"	1/2"	1/2"
GJ	GAS JET - (DUAL @ 90°) 1/2" BRASS BL-4203-0, DECK MOUNTED, VANDAL RESISTANT, TWO BALL VALVES AT 90° APART WITH CHECK, FULL FLOW NOZZLE, ANTI-ROTATION BODY, 3/8" THREADED INLET, PROVIDE GAS INDEX BUTTON AS REQUIRED.	--	--	--	--

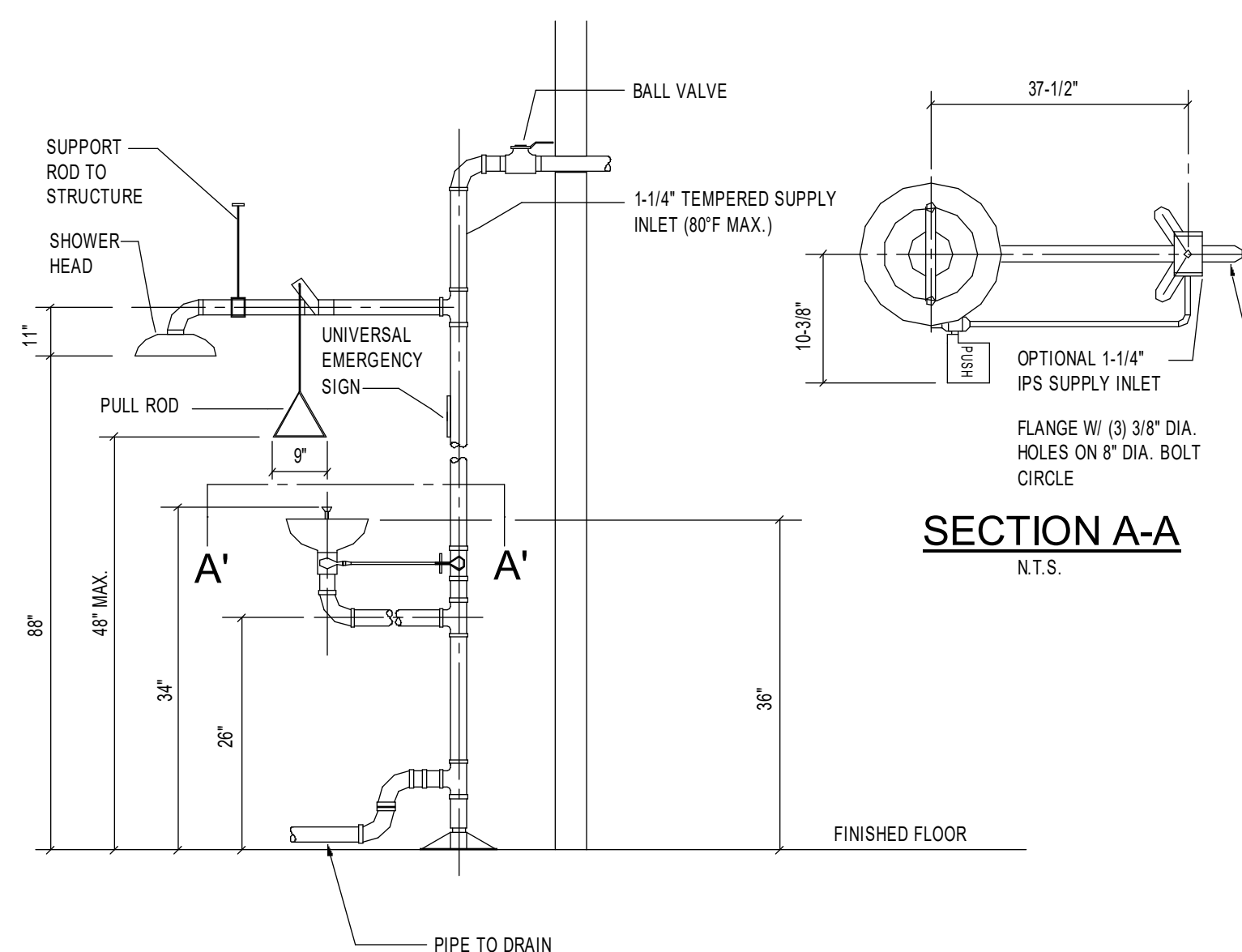
NOTES:
1. LAVATORY & WATER COOLERS SUPPLY SHALL BE BRASS W/ BRASS ANGLE STOPS FOR 1/2" WATER SUPPLY LINES, W/ LOOSE KEY (W/ CAP), AND WALL FLANGE. ALL COMPONENTS SHALL BE POLISHED CHROME FINISH. MANUFACTURER: BRASS CRAFT OR APPROVED EQUAL.
2. CAST BODY "P" TRAP 1-1/2" x 1-1/2" WITH HEAVY CAST L-BEND & FLAT COLLAR PLUG, SLIP NUTS AND WALL FLANGE. ALL COMPONENTS SHALL BE POLISHED CHROME FINISH. MANUFACTURER: BRASS CRAFT OR APPROVED EQUAL.
3. STRAINERS SHALL BE FURNISHED WITH FIXTURES AS REQUIRED. FOR H/C LAVATORY OR SINKS PROVIDE OFFSET TAILPIECE.
4. PROVIDE TRUEBRO MODEL 103 (WHITE), ANTIMICROBIAL HAND LAV-GUARDS INSTALLATION KIT FOR ALL WHEELCHAIR LAVATORY & SINKS FOR WATER SUPPLIES & WASTE LINE.
5. PROVIDE WATER SUPPLY & "P" TRAP & OPTIONAL WATER FILTERS FOR ELECTRIC WATER COOLERS AS PER MANUFACTURERS RECOMMENDATIONS.
6. THE PLUMBING FIXTURES VENDOR SHALL COORDINATE WITH THE PLUMBING AND GENERAL CONTRACTOR ALL PLUMBING FIXTURES ROUGH IN DIMENSIONS BEFORE CONSTRUCTION BEGIN.
7. UNLESS SHOWN ABOVE, PLUMBING FIXTURES MANUFACTURER, TRIM COLOR AND FINISH SHALL BE FURNISHED AS DIRECTED BY OWNER/ARCHITECT.
8. REFER TO ARCHITECTURAL DRAWINGS FOR STANDARD, A.D.A MOUNTING AND CHILD HEIGHTS. REFER TO ARCHITECTURAL FOR LOCATION OF A.D.A COMPLIANT SHOWER SEAT AND SHOWER BARS
9. CONTRACTOR TO PROVIDE AN EXTRA 10% OF BATTERIES, AERATORS, CARTRIDGE, ETC...



3 PIPE SUPPORT DETAIL
12" = 1'-0"



4 PIPE PENETRATION WITH FIRE/SMOKE SEAL
NTS



5 EMERGENCY SHOWER EYE WASH DETAIL
NTS

Project Title:
**ADA IMPROVEMENTS / ELEVATOR ADDITION AT:
WESTERN MIDDLE SCHOOL
1 WESTERN JR HIGHWAY
GREENWICH CT 06830**



SILVER PETRUCCI + ASSOCIATES
3190 WHITNEY AVENUE HAMDEN CT 06518
311 STATE STREET NEW LONDON CT 06320
203 230 9007 silverpetrucci.com

Revision:	Description:	Date:	Revised By:
1	Addendum #5	03/19/2026	MPB

Drawing Title:
PLUMBING SCHEDULES & DETAILS

Project Submission:
ISSUED FOR BID

Scale Project Number:

Date:
01/30/2026

Scale:

As Indicated

Drawn By:
M. BEGIN

Project Number:
23.097

Drawing Number:
P501