



CAAC Design and Construction Update

March 19, 2026





RIBBON CUTTING



Fletcher Miller – Abatement

Construction

Clear / MOA

EDI



Conifer HS - Bleachers Norcon

Fabrication
Summer Install



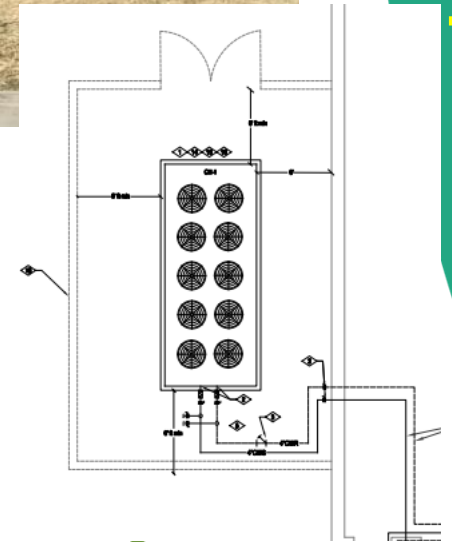
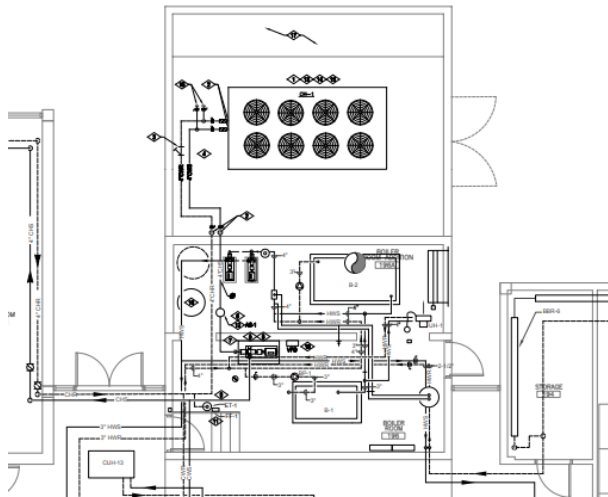
SAFETY – Life Cycle

District Wide Mechanical I

Construction

Swanson, Mandalay (operational 4/9), Slater
Columbine Engineering

JCOR (CMGC) Construction Manager/General Contractor



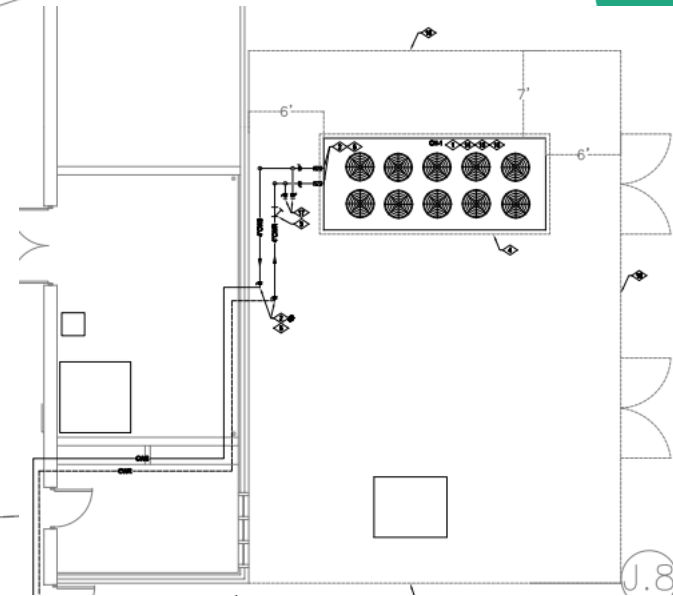
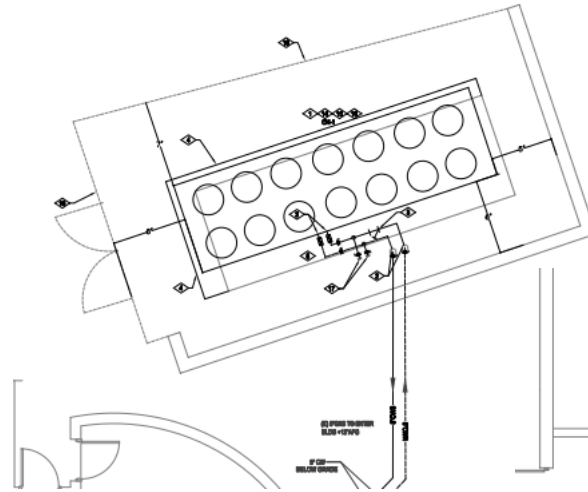
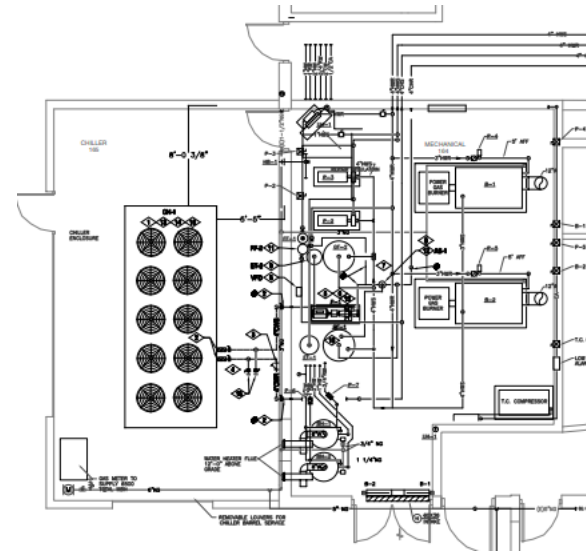
Life Cycle

District Wide Mechanical II

Lasley, Stein, Deane

Columbine Engineering

US Eng (CMGC) Construction Manager/General Contractor



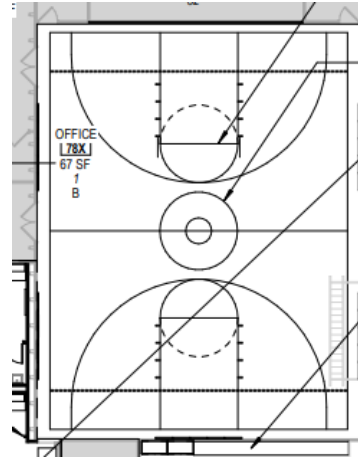
District Wide Flooring Mandalay, Weber, West Woods

Construction

Eidos

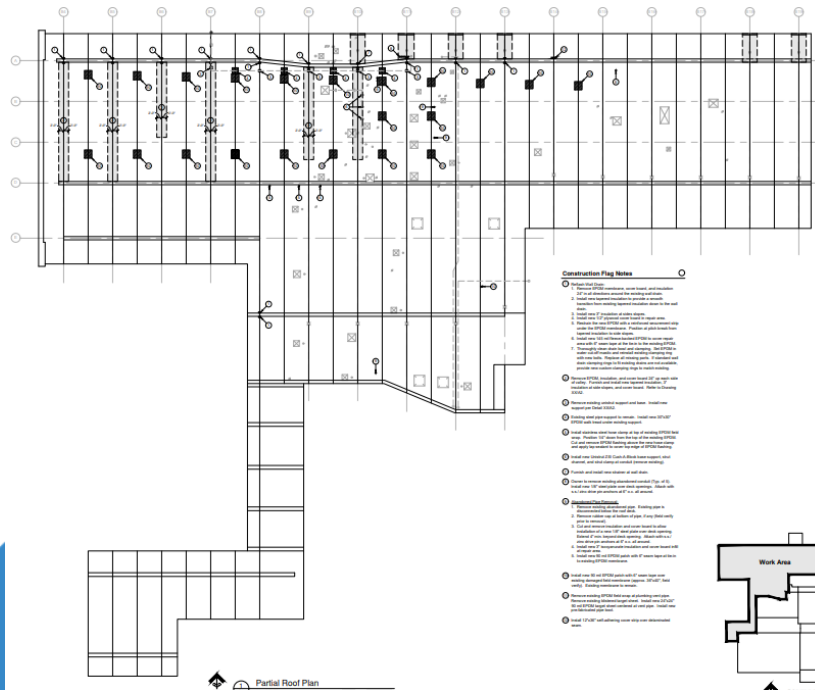
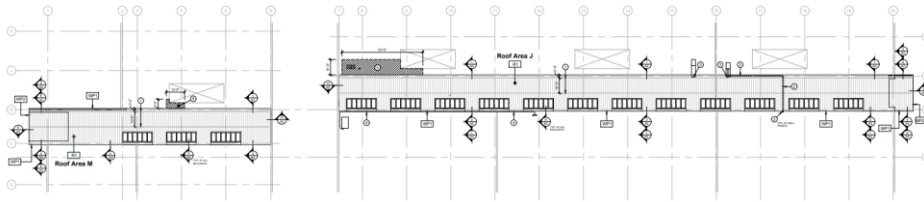


Single Track



Life Cycle

Standley Lake HS, Alameda International SR+dK Colorado Moisture Control, Inc.



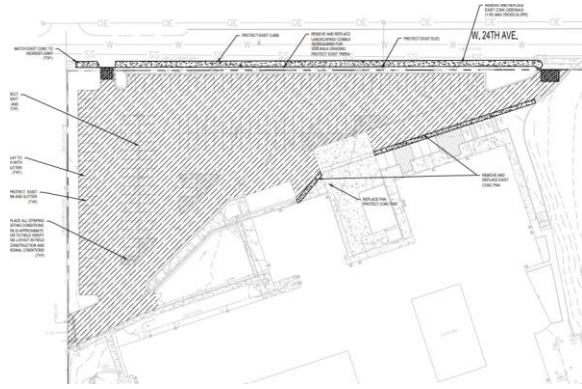
- Construction Flag Notes**
- 1. Remove existing roof deck and insulation.
 - 2. Install 1/2" gypsum board over existing roof deck.
 - 3. Install 1/2" gypsum board over existing roof deck.
 - 4. Install 1/2" gypsum board over existing roof deck.
 - 5. Install 1/2" gypsum board over existing roof deck.
 - 6. Install 1/2" gypsum board over existing roof deck.
 - 7. Install 1/2" gypsum board over existing roof deck.
 - 8. Install 1/2" gypsum board over existing roof deck.
 - 9. Install 1/2" gypsum board over existing roof deck.
 - 10. Install 1/2" gypsum board over existing roof deck.
 - 11. Install 1/2" gypsum board over existing roof deck.
 - 12. Install 1/2" gypsum board over existing roof deck.
 - 13. Install 1/2" gypsum board over existing roof deck.
 - 14. Install 1/2" gypsum board over existing roof deck.
 - 15. Install 1/2" gypsum board over existing roof deck.
 - 16. Install 1/2" gypsum board over existing roof deck.
 - 17. Install 1/2" gypsum board over existing roof deck.
 - 18. Install 1/2" gypsum board over existing roof deck.
 - 19. Install 1/2" gypsum board over existing roof deck.
 - 20. Install 1/2" gypsum board over existing roof deck.

Life Cycle

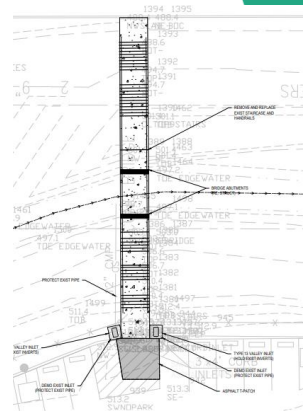
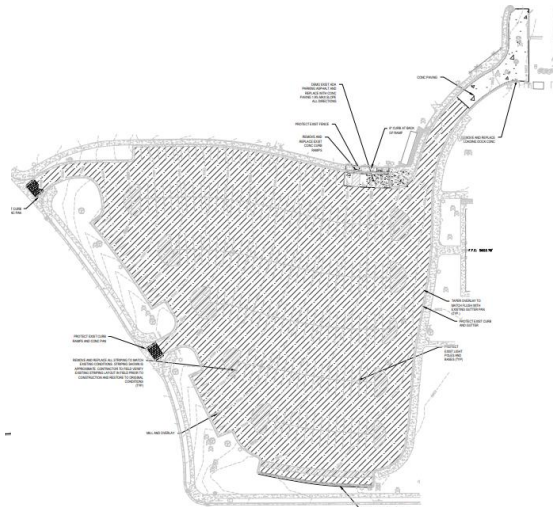
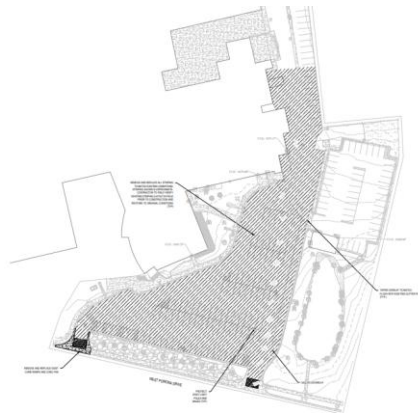
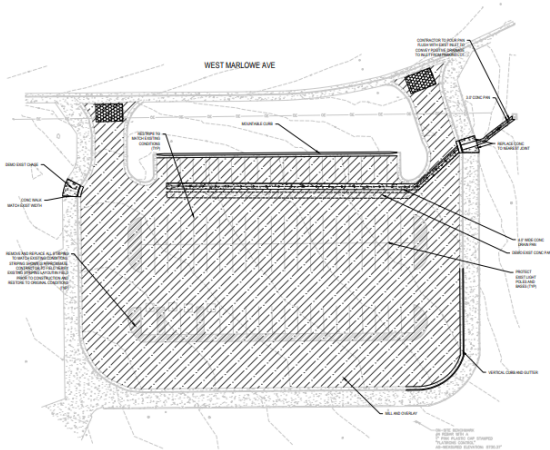
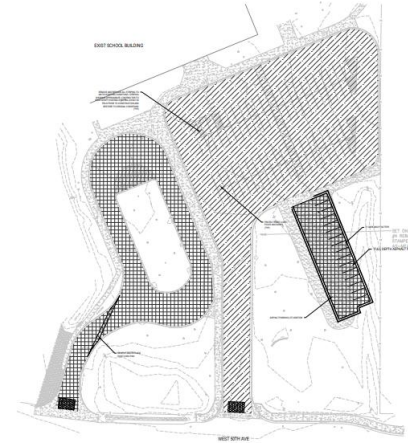
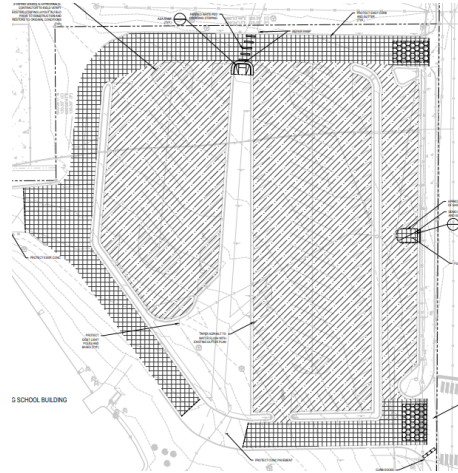


District Wide Paving JHS, Columbine HS, Fairmount, Kendallvue, Pomona, D'Evelyn, WRHS

JVA



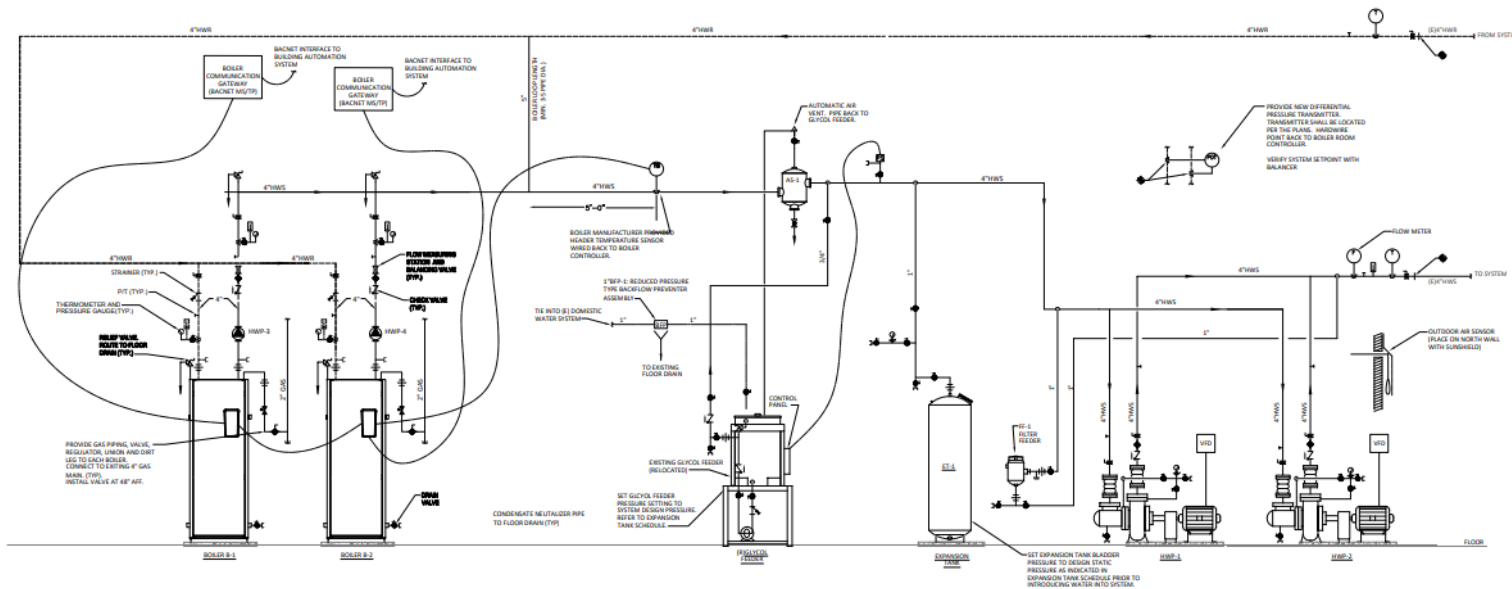
Crossland (CMGC)



SAFETY – Life Cycle

Columbine Engineering US Engineering (CMGC)

Jeffco Maintenance providing value of \$130k in support



Life Cycle

Bradford North K-8 – HVAC

Units 1, 3 & 5

Columbine Engineering

3 Units (Classrooms)

Construction

US Engineering (CMGC)



Mechanical Plan West – Indicating areas served by each unit.

- Blue – RTU-1
- Green – RTU-2
- Magenta – RTU-3
- Orange – RTU-4
- Cyan – RTU-5

Life Cycle

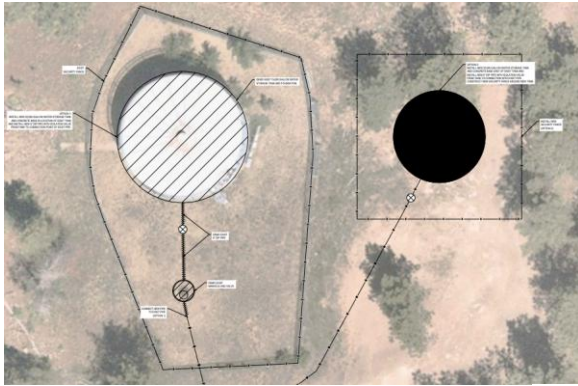


District Wide – Water Projects

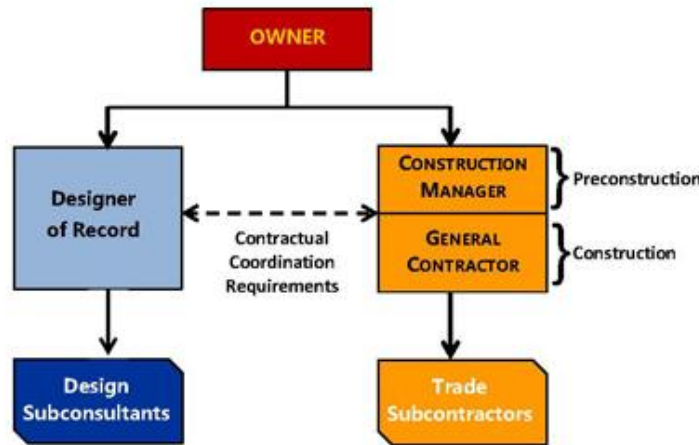
Construction

Conifer Clarifier, Conifer Water Tank, Windy Peak
New Infiltration Galery, Conifer Aeration System
JVA Velocity CMGC

SAFETY – Life Cycle



CD's - JVA	CMGC – Velocity
GMP 2/17/26	\$625,464
GMP 2/19/26	\$741,414
Below Budget	\$140,548
	\$ 24,598



Title: **Bidding Procedures for Capital Construction Projects**

Code: DJE-R

Section: D: Fiscal Management



Jeffco - Water Rights - Irrigation Ponds – Evaporation

Jeffco irrigation pond water is used within 48 hours of removal from ditch. (reduces loss due to evaporation and is required by contract with ditch companies)

Conifer HS Pond is always filled for the Fire Suppression Needs of Conifer HS.

It also is the location where Conifer HS domestic water (from well source) is treated after going down the sanitary sewer drains and is added back to the natural water system.

No evaporation control methods are utilized at Conifer HS.

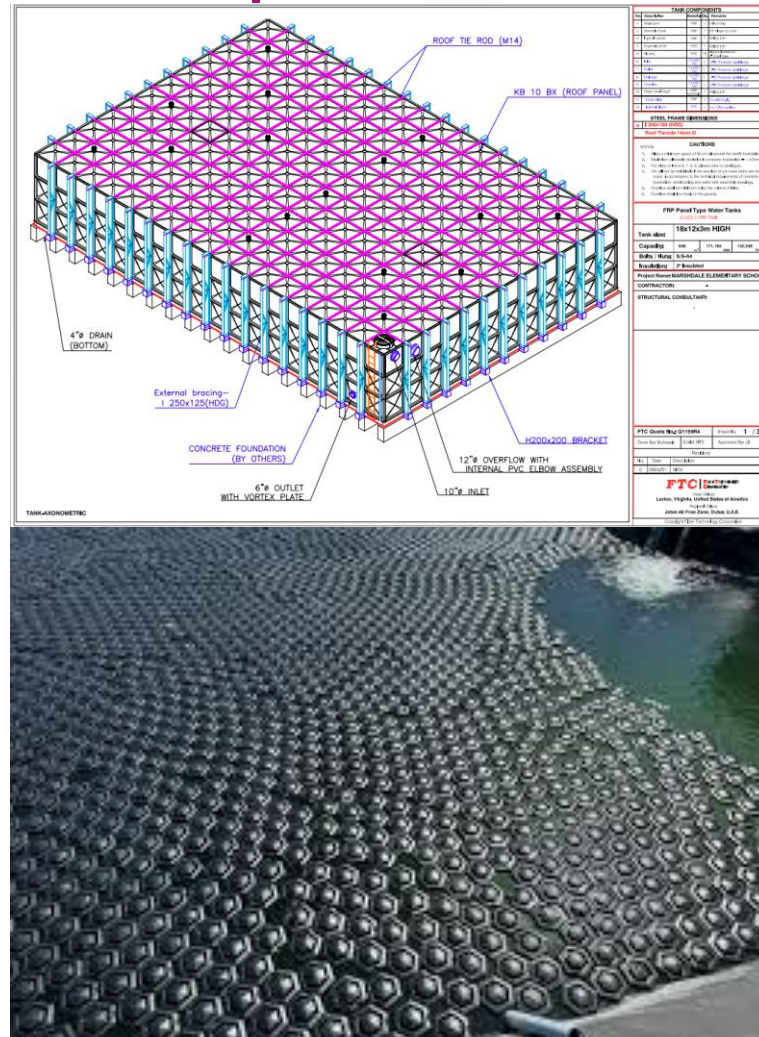
Jeffco - Water Rights - Ponds – Evaporation

Possible solutions:

Cistern (Marshdale ES)

Floating Covers

Deeper reservoir design with a smaller Square footage at the surface.

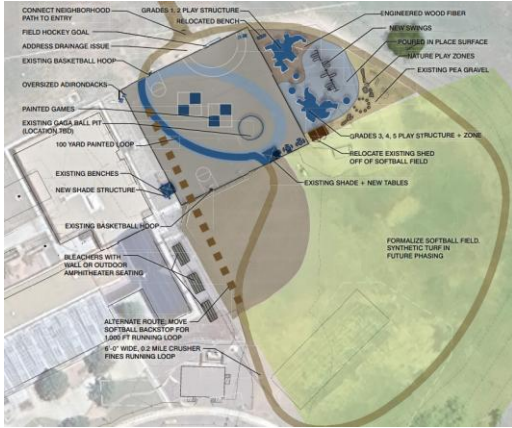


<https://dwr.colorado.gov/services/water-administration/augmentation-plans>

<https://dwr.colorado.gov/services/water-administration/water-rights>

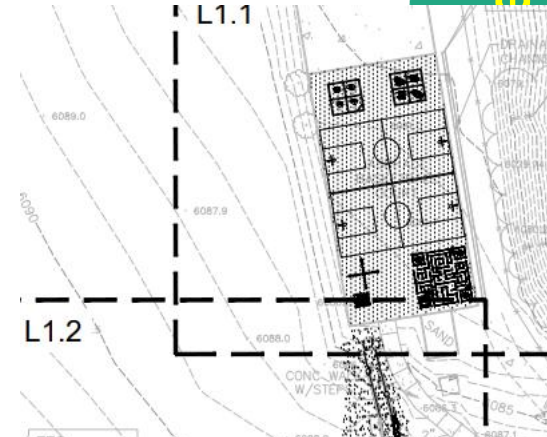
<https://dwr.colorado.gov/services/water-administration/pond-management-restoration-projects>

District Wide – Playgrounds – Parmalee, Bergen, Shelton Design Concepts Colorado Designsapes & Arrow J

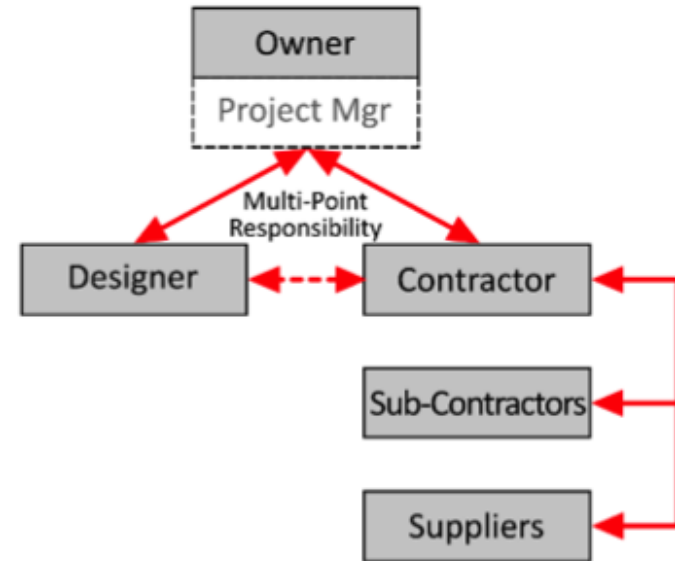


Bid Award

Title: **Bidding Procedures for Capital Construction Projects**
Code: DJE-R
Section: D: Fiscal Management



Design-Bid-Build



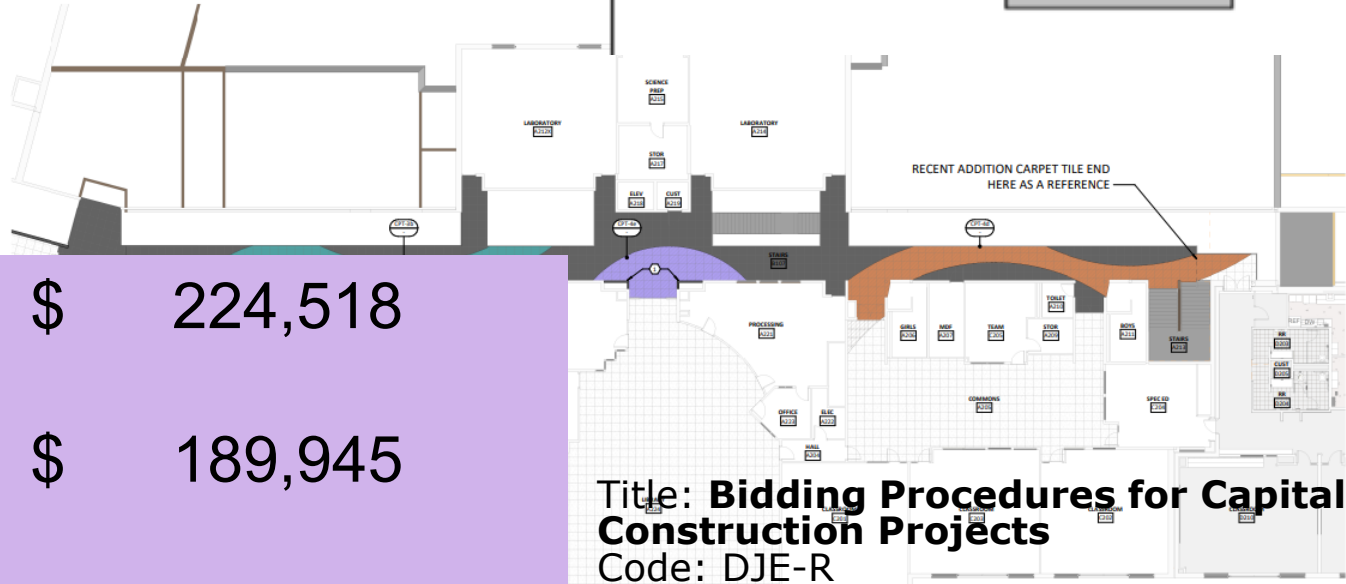
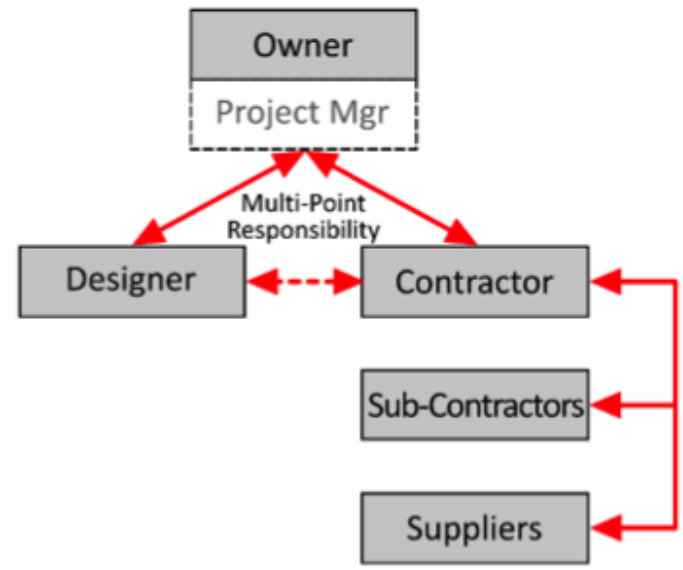
Budget	\$	686,000
Bid 3/10/26	\$	451,000
Bid 1/26/26	\$	189,551
Under	\$	45,449

Wayne Carle MS - Flooring RB+B Single Track

Bid Award



Design-Bid-Build



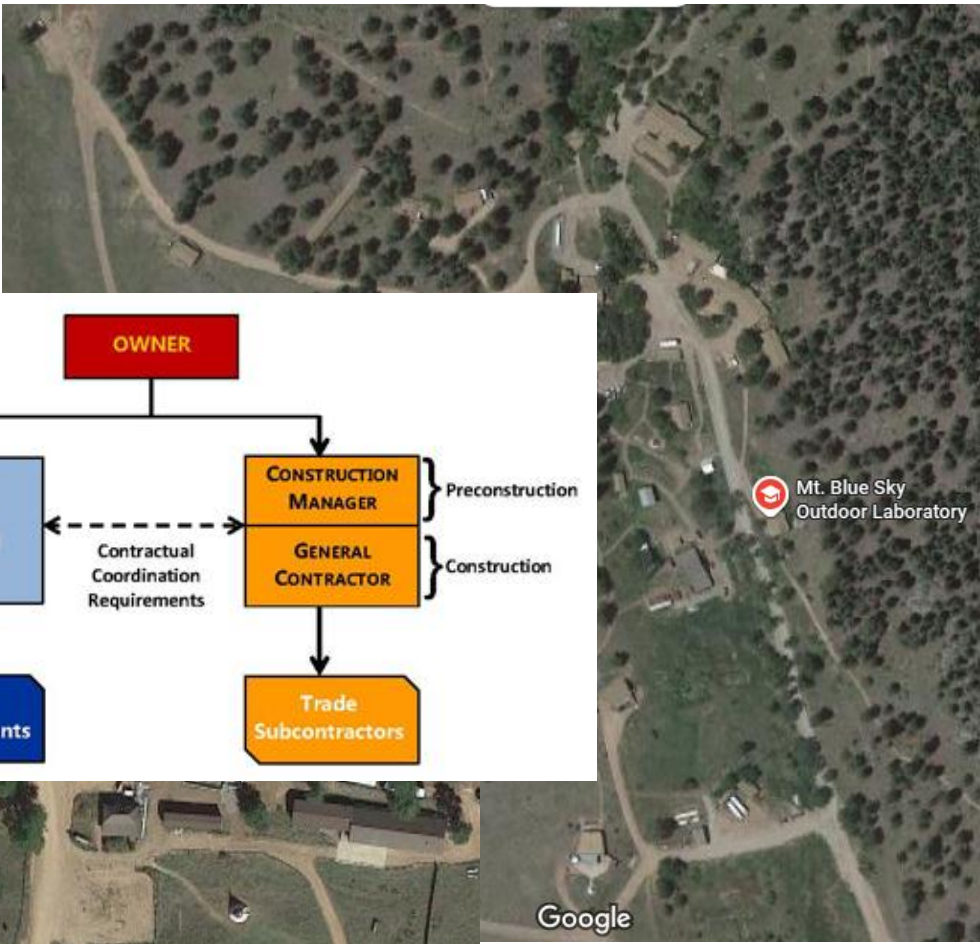
Budget	\$	224,518
Bid 3/9/26	\$	189,945
Under	\$	34,573

Title: **Bidding Procedures for Capital Construction Projects**
 Code: DJE-R
 Section: D: Fiscal Management

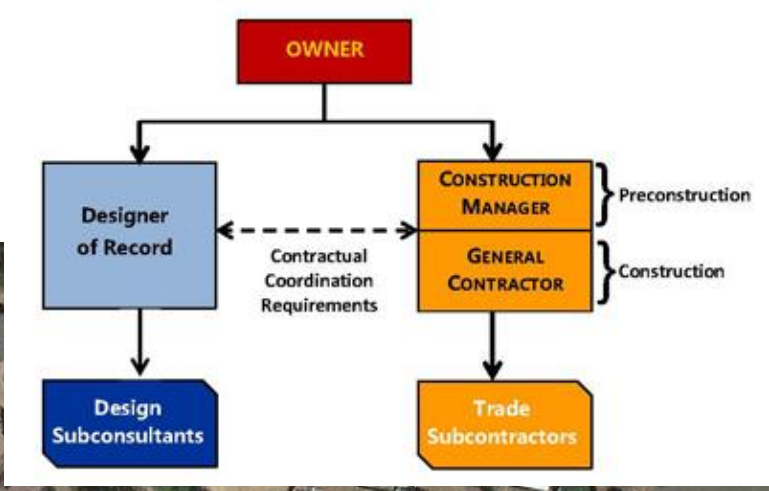
Fire Alarm System Windy Peak & MT Blue Sky Outdoor Labs

TLH GTC (CMGC)

Title: **Bidding Procedures for Capital Construction Projects**
Code: DJE-R
Section: D: Fiscal Management



AES System Pilot Successful



SAFETY – Life Cycle

Ackerman Engineering TBD

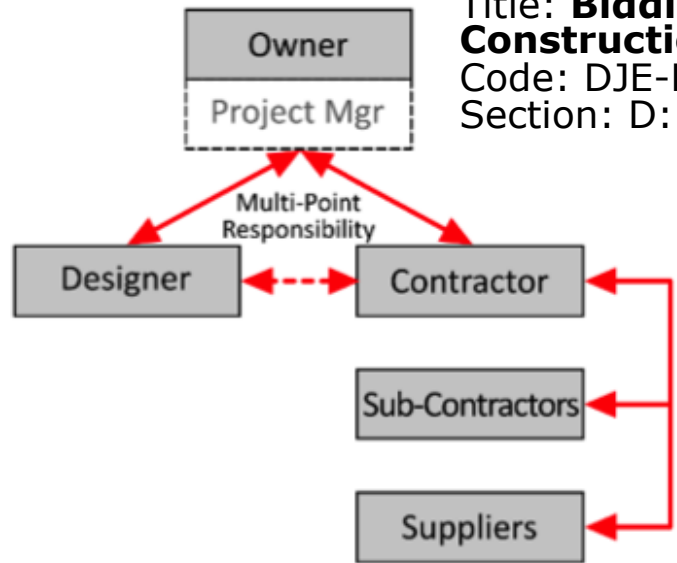
GENERAL NOTES:
1. All lighting fixtures shall be installed in accordance with the manufacturer's instructions.
2. All lighting fixtures shall be installed in accordance with the National Electrical Code (NEC) and all applicable local codes.
3. All lighting fixtures shall be installed in accordance with the International Building Code (IBC) and all applicable local codes.
4. All lighting fixtures shall be installed in accordance with the International Fire Code (IFC) and all applicable local codes.
5. All lighting fixtures shall be installed in accordance with the International Energy Conservation Code (IECC) and all applicable local codes.
6. All lighting fixtures shall be installed in accordance with the International Green Building Code (IGBC) and all applicable local codes.
7. All lighting fixtures shall be installed in accordance with the International Plumbing Code (IPC) and all applicable local codes.
8. All lighting fixtures shall be installed in accordance with the International Mechanical Code (IMC) and all applicable local codes.
9. All lighting fixtures shall be installed in accordance with the International Fire and Safety Code (IFSC) and all applicable local codes.
10. All lighting fixtures shall be installed in accordance with the International Building Code (IBC) and all applicable local codes.

FLAG NOTES:
1. All lighting fixtures shall be installed in accordance with the manufacturer's instructions.
2. All lighting fixtures shall be installed in accordance with the National Electrical Code (NEC) and all applicable local codes.
3. All lighting fixtures shall be installed in accordance with the International Building Code (IBC) and all applicable local codes.
4. All lighting fixtures shall be installed in accordance with the International Fire Code (IFC) and all applicable local codes.
5. All lighting fixtures shall be installed in accordance with the International Energy Conservation Code (IECC) and all applicable local codes.
6. All lighting fixtures shall be installed in accordance with the International Green Building Code (IGBC) and all applicable local codes.
7. All lighting fixtures shall be installed in accordance with the International Plumbing Code (IPC) and all applicable local codes.
8. All lighting fixtures shall be installed in accordance with the International Mechanical Code (IMC) and all applicable local codes.
9. All lighting fixtures shall be installed in accordance with the International Fire and Safety Code (IFSC) and all applicable local codes.
10. All lighting fixtures shall be installed in accordance with the International Building Code (IBC) and all applicable local codes.

ACKERMAN ENGINEERING, INC.
10000 W. 10th Ave., Suite 100
Denver, CO 80202
Tel: 303.755.1000
Fax: 303.755.1001
www.ackermaneng.com

R LED LIGHTING FACILITIES CENTER
DR00401

Design-Bid-Build



SAFETY



Electric Bus Infrastructure Central Bus Terminal

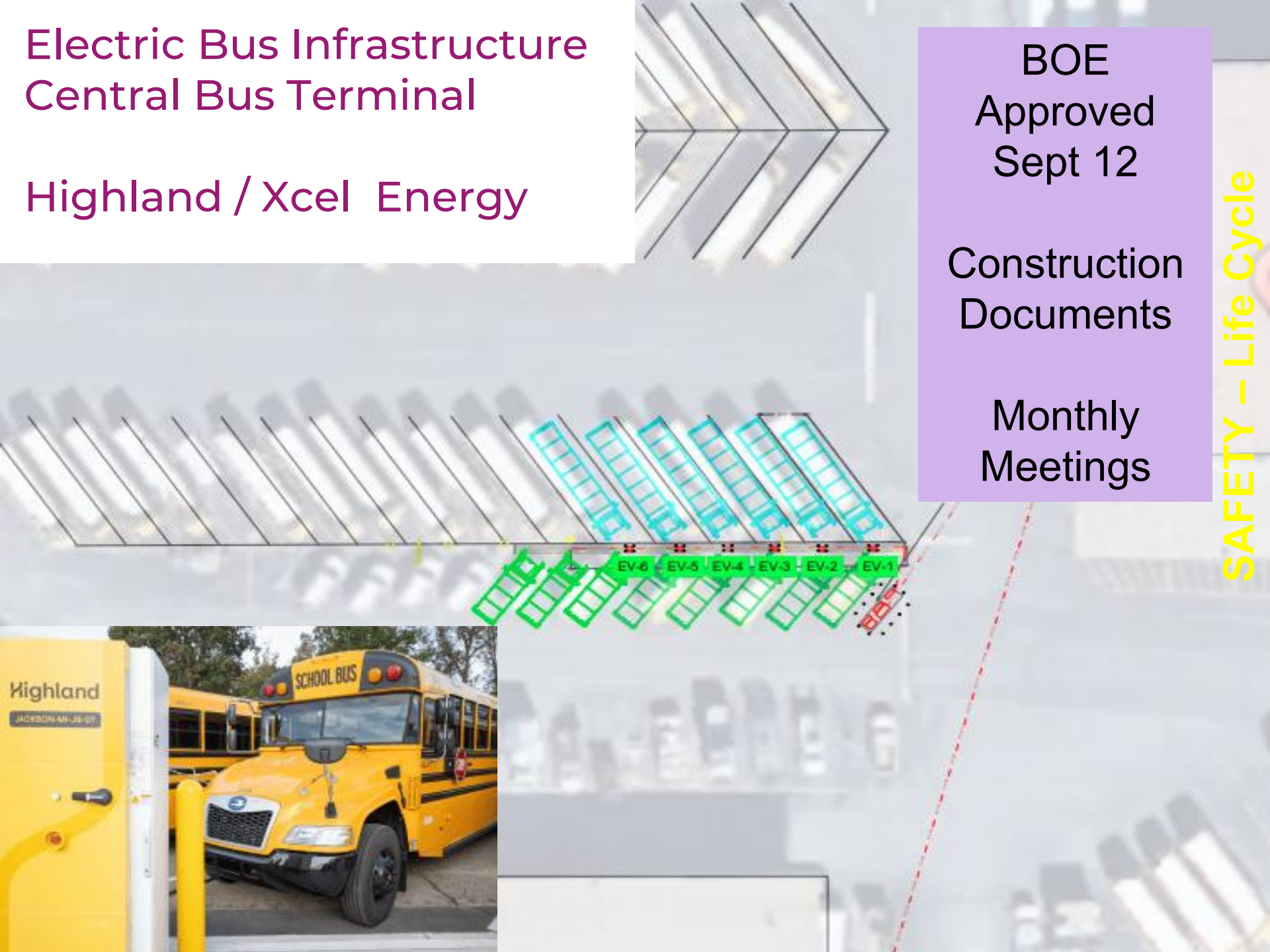
Highland / Xcel Energy

BOE
Approved
Sept 12

Construction
Documents

Monthly
Meetings

SAFETY – Life Cycle



District Wide

GMP
Development

Door Access System Upgrade
Technology Consulting Solutions

CMGC - Stone Security LLC

Alarm Monitoring Software (AKA SIS - AKA SMS)
Software / Option Evaluation

Manitou Software with Monitoring Service

SAFETY – Life Cycle

2027 Potential Projects - DRAFT

27M Bradford North Phase II Mechanical
27M DW Paving
27M DW Mechanical
27M Conifer Waste Water Treatment (Clarifier)
27M DW Roofing
27M Arvada West Window Wall
27M DW Security - Supplemental for Door Access
27M Jeffco Stadium Retaining Wall
27M DW CO Detection (Mountain Schools 7?)
27M Outdoor Lab Supplemental for FA System
27M Laminated Glazing @ exterior doors accessing hallways (20 locations
27M BDA systems

Thank You!