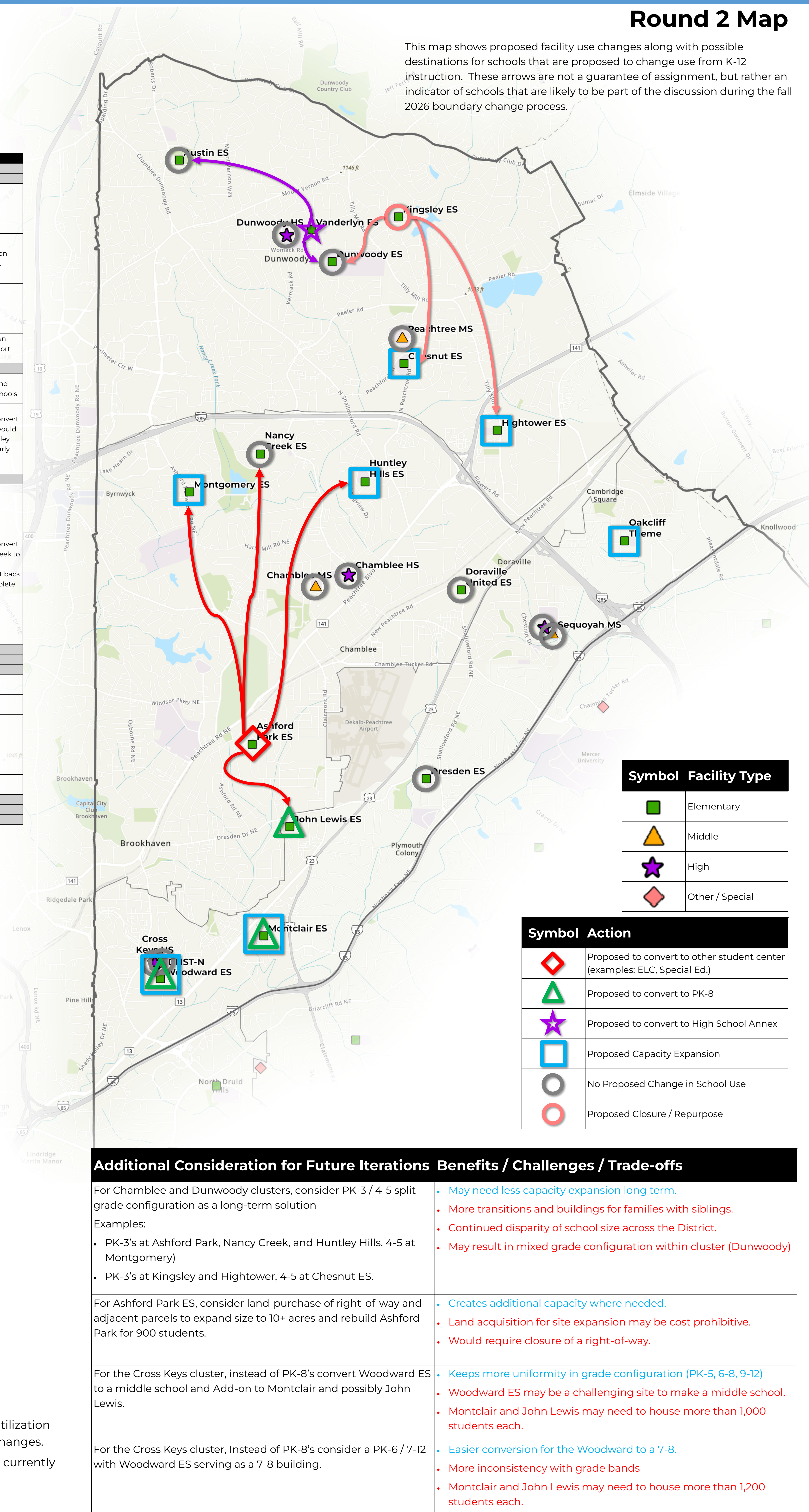


Dunwoody, Chamblee, Cross Keys, and Sequoyah (Future) Clusters

Round 2 Map

This map shows proposed facility use changes along with possible destinations for schools that are proposed to change use from K-12 instruction. These arrows are not a guarantee of assignment, but rather an indicator of schools that are likely to be part of the discussion during the fall 2026 boundary change process.



Symbol	Facility Type
Green Square	Elementary
Yellow Triangle	Middle
Purple Star	High
Red Diamond	Other / Special

Symbol	Action
Red Diamond	Proposed to convert to other student center (examples: ELC, Special Ed.)
Green Triangle	Proposed to convert to PK-8
Purple Star	Proposed to convert to High School Annex
Blue Square	Proposed Capacity Expansion
Grey Circle	No Proposed Change in School Use
Red Circle	Proposed Closure / Repurpose

Additional Consideration for Future Iterations	Benefits / Challenges / Trade-offs
For Chamblee and Dunwoody clusters, consider PK-3 / 4-5 split grade configuration as a long-term solution Examples: • PK-3's at Ashford Park, Nancy Creek, and Huntley Hills. 4-5 at Montgomery) • PK-3's at Kingsley and Hightower, 4-5 at Chesnut ES.	<ul style="list-style-type: none"> • May need less capacity expansion long term. • More transitions and buildings for families with siblings. • Continued disparity of school size across the District. • May result in mixed grade configuration within cluster (Dunwoody)
For Ashford Park ES, consider land-purchase of right-of-way and adjacent parcels to expand size to 10+ acres and rebuild Ashford Park for 900 students.	<ul style="list-style-type: none"> • Creates additional capacity where needed. • Land acquisition for site expansion may be cost prohibitive. • Would require closure of a right-of-way.
For the Cross Keys cluster, instead of PK-8's convert Woodward ES to a middle school and Add-on to Montclair and possibly John Lewis.	<ul style="list-style-type: none"> • Keeps more uniformity in grade configuration (PK-5, 6-8, 9-12) • Woodward ES may be a challenging site to make a middle school. • Montclair and John Lewis may need to house more than 1,000 students each.
For the Cross Keys cluster, Instead of PK-8's consider a PK-6 / 7-12 with Woodward ES serving as a 7-8 building.	<ul style="list-style-type: none"> • Easier conversion for the Woodward to a 7-8. • More inconsistency with grade bands • Montclair and John Lewis may need to house more than 1,200 students each.

Summary

The northern area of the District is currently experiencing a great deal of change. There are currently several capacity expansion projects underway which were funded by SPLOST-VI (Dresden ES rebuild, Cross Keys HS modernization, and the construction of Sequoyah HS). Since Sequoyah middle and high schools are on the same, Sequoyah Middle School will be a direct feeder to Sequoyah High School. This leaves Cross Keys HS without a direct feeder middle school, meaning that students would attend middle schools in different clusters.

Additionally, there are several facilities that are enrolled over capacity and are functioning with portables while additional facilities are under-utilized. Regardless of any outcome of this process, significant boundary changes are needed to configure this area to be function with the new capacity that will become available.

Feedback from the first round of scenarios focused on maintaining small school communities and existing cluster continuity. This second iteration provides more clarity around what may occur with buildings that are proposed to change their use or configuration. It is not possible to eliminate school closures completely in this area.

Campus	Cluster	Original Scenario 1 Action	Original Scenario 1 Rationale	Frequent Survey Feedback	Scenario 1 Refinements / Clarification	Scenario 2 Action	Map Symbol	Scenario 2 Rationale	Capital Project Consideration	Phasing Consideration
Austin ES	Dunwoody	No change in school use				No change in school use				
Dunwoody ES	Dunwoody	No change in school use				No change in school use				
Chesnut ES	Dunwoody	Capacity expansion project	Chesnut ES is proposed for a capacity expansion project due to area forecasted enrollment and a site that supports expansion (11.9 acres). This will allow for the consolidation of small elementary facilities in the area.	Concerns around existing overcrowding, importance of keeping neighborhoods together, concerns that larger schools lead to larger class sizes.	Class size and facility size are completely independent. If builds are expanded to accommodate more students, more staff will be allocated to support those students	Proposed capacity expansion project	Blue Square	Unchanged	Proposed capacity expansion project	Closure of Kingsley is dependent on this project
Hightower ES	Dunwoody	Capacity expansion project	Hightower ES is proposed for a capacity expansion project due to area forecasted enrollment and a site that supports expansion (11.8 acres). This will allow for the consolidation of small elementary facilities in the area.	Importance of keeping neighborhoods together, concerns that larger schools lead to larger class sizes.	Class size and facility size are completely independent. If builds are expanded to accommodate more students, more staff will be allocated to support those students	Proposed capacity expansion project	Blue Square	Unchanged	Due to the age of this facility and the complication of expanding the current building, this school is proposed to be rebuilt on its current site.	Near-term: Students may be able to stay on campus while the school is rebuilt on-site.
Kingsley ES	Dunwoody	Close or Repurpose	Kingsley is proposed to be closed or repurposed due to forecasted low enrollment (392 in 2030) along with poor facility condition (79% FCA score), small capacity (504), and excess capacity in the area.	Resistance to closure, support for maintaining small school communities	Closure of this facility is dependent on additional capacity at Chesnut	Proposed to close or be repurposed	Red Circle	Close or Repurpose	Medium-term solutions have been identified for the HVAC issues.	Medium Term
Vanderlyn ES	Dunwoody	Close or Repurpose	Vanderlyn is proposed to close due to small capacity (552) along with needs for site expansion at Dunwoody HS and excess capacity in the area.	Resistance to closure, support for maintaining small school communities	The facility can be used as is to support Dunwoody HS, ideas include 9th grade academy, Career Tech / Vocational spaces.	Proposed to convert to High School Annex	Purple Star	The facility can be used as is to support Dunwoody HS, ideas include 9th grade academy, Career Tech / Vocational spaces.	Minor fixture replacement / upgrades	Students would likely need to split between Austin, Dunwoody, and Kingsley in the short term.
Peachtree MS	Dunwoody	No change in school use				No change in school use				
Dunwoody HS	Dunwoody	No change in school use		Concerns around overcrowding without a capacity expansion project listed	Vanderlyn would support the Dunwoody HS program to expand capacity	No change in school use		The intent is for the Dunwoody HS to use the facility at Vanderlyn ES to expand capacity, ideas include: 9th grade academy, CTE program areas.		This is dependent on Vanderlyn closing and distributing the students to other area schools
Ashford Park ES	Chamblee	Close or Repurpose	Ashford Park ES is proposed to be closed or repurposed because the facility is significantly smaller than the district's desired minimum size of 600 seats (capacity 480), and the site (7.02 acres) cannot be expanded to meet future needs. The facility is not large enough to support an efficient elementary school program.	Resistance to closure, support for maintaining small school communities, strong desire to stay in the Chamblee cluster, open to alternative grade bands.	This intent is to use the Ashford Park facility to serve students in some way, the site is not adequate for a PK-5 elementary school.	Proposed to convert to other student center (examples: ELC, Special Ed.)	Red Diamond	There is need for capacity in the area, but purchasing additional property may be cost prohibitive.	Minor fixture replacement / upgrades	Once Dresden opens in the fall of 2027, convert Ashford Park to a K-3 campus, students would attend Montgomery / Nancy Creek / Huntley Hills for grades 4-5. Long-term: Use for Early Learning Center or swing space.
Doraville United ES	Chamblee	No change in school use				No change in school use				
Huntley Hills ES	Chamblee	Capacity Expansion	Huntley Hills ES is proposed for a capacity expansion project due to area forecasted enrollment and a site that supports expansion (10.5 acres). This will allow for the consolidation of small elementary facilities in the area.	support for maintaining small school communities		Proposed capacity expansion project	Blue Square	Unchanged	Proposed capacity expansion project	
Montgomery ES	Chamblee	Capacity Expansion	Montgomery ES is proposed for a capacity expansion project due to area forecasted enrollment and a site that supports expansion (12.15 acres). This will allow for the consolidation of small elementary facilities in the area.	support for maintaining small school communities		Proposed capacity expansion project	Blue Square	Unchanged	Proposed capacity expansion project	Once Dresden opens in the fall of 2027, convert Huntley Hills, Ashford Park, and Nancy Creek to PK-3 buildings which will feed into Montgomery as a 4-5. Long-term, convert back to a PK-5 after capacity expansion is complete.
Nancy Creek ES	Chamblee	Not addressed in Scenario 1				No change in school use (Swing Space)		The Cary Reynolds ES community will be included in the redistricting process for Dresden ES. The Nancy Creek ES facility is proposed to provide capacity to area schools.		
Chamblee MS	Chamblee	No change in school use				No change in school use			Currently under construction (Opens 2027)	
Chamblee HS	Chamblee	No change in school use				No change in school use			Minor fixture replacement	Medium-Term, align with Sequoyah HS opening in fall of 2029
Dresden ES	Cross Keys	No change in school use				No change in school use			Proposed capacity expansion and Proposed conversion to PK-8	Medium-Term, align with Sequoyah HS opening in fall of 2029
John Lewis ES	Cross Keys	No change in school use				Proposed to convert to PK-8	Green Triangle	John Lewis ES is proposed to convert to a K-8 to create middle school capacity for Cross Keys HS.	Proposed capacity expansion and Proposed conversion to PK-8	Medium-Term, align with Sequoyah HS opening in fall of 2029
Montclair ES	Cross Keys	No change in school use				Proposed capacity expansion and Proposed conversion to PK-8	Green Triangle	Montclair ES is proposed to convert to a K-8 to create middle school capacity for Cross Keys HS. After Dresden opens, would be a regular (non-theme) elementary school. Additional capacity is needed to accommodate students from the Pleasantdale and Evansdale areas which are very likely to feed into Sequoyah with the area around Oakcliff theme.	Proposed capacity expansion project	Medium-Term, align with Sequoyah HS opening in fall of 2029
Oakcliff Theme ES	Cross Keys	Capacity Expansion	Oakcliff ES is proposed for a capacity expansion project due to area forecasted enrollment and a site that supports expansion (9.4 acres). This will allow for the consolidation of small elementary facilities in the area.	support for maintaining small school communities	After Dresden opens, this would be a regular (non-theme) elementary school.	Proposed capacity expansion project	Blue Square			
Woodward ES	Cross Keys	No change in school use				Proposed capacity expansion and Proposed conversion to PK-8	Green Triangle	Woodward ES is proposed to convert to a K-8 to create middle school capacity for Cross Keys HS.	Proposed capacity expansion and Proposed conversion to PK-8	Medium-Term, align with Sequoyah HS opening in fall of 2029
Sequoyah MS	Cross Keys	No change in school use				No change in school use			Currently under construction (Opens 2027)	
Cross Keys HS	Cross Keys	No change in school use				No change in school use			Currently being modernized (Completion 2027)	
Sequoyah HS	Cross Keys	No change in school use				No change in school use			Currently under construction (Opens 2029)	

Capacity, Utilization, and Student Density Heatmaps

Elementary

Middle

High



Please note:

- 2030 enrollment forecast figures and utilization figures do not assume any boundary changes.
- Capacity includes any projects that are currently under construction.