

*March is  
Women's  
History  
Month*



**Good morning Parents**  
**Today is Wednesday, March 11<sup>th</sup>**



**Welcome Parents!**



[MPTCS.Org](http://MPTCS.Org)

STEAM Academy Vice Principals



**FOLLOW ME !!**

To get the principal's Point of view follow:

[@PRINCIPAL\\_SILVESTRE](https://www.instagram.com/PRINCIPAL_SILVESTRE)

Instagram



# Meet Our School Support Team!



**Ms. Munoz**  
**FACE**



**Ms. Kirkland**  
**Culture & Climate Dean**



**Ms. Ms. Burgwyn**  
**Office Manager**



**Ms. Lucas**  
**Attendance Counselor**



**Ms. De Quatro**  
**Child Study Team**



**Ms. Purnell**  
**School Operations**



**Ms. Montes-Valdez**  
**Social Worker**

**Mr. Kelly**  
**Child Study Team**

# Chit-Chat Schedule & Time

**Second Wednesday of Every Month**

9:15 to 10:00 am

Next Meeting will be on

April 15<sup>th</sup>



***Our Mission:*** *The Mission of Marion P. Thomas Charter School is to build culturally rich, transformative educational spaces that cultivate successful, lifelong innovators who use their passions, character, and intellect to better themselves, the greater Newark community, and the world beyond.*

***The MPTCS Crest*** speaks to four core values that are designed to guide our young people and govern our work.



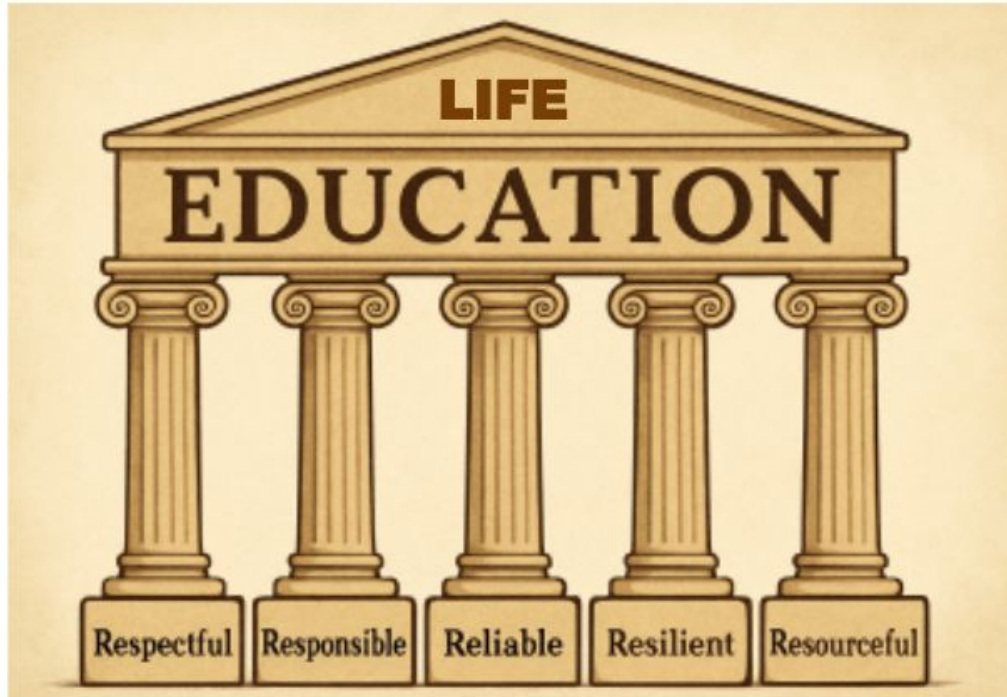
- ***The Sankofa Bird*** is a West African adinkra symbol which means to “go back and get it.” We want our scholars to use knowledge from the past to inform, inspire, build a successful future, and give back to the community.
- ***The Tree of Knowledge*** symbolizes lifelong learning that is rooted in rich culture and well-rounded experiences.
- ***The Torch*** represents the igniting of fire, passion, and leadership in our scholars. We want them to be trailblazers and light their own paths.
- ***The Tiger*** encased in the heart signifies the balancing of strength, boldness, resilience, and prowess with compassion and strong character. We want our scholars to be good people who are courageous and self-aware.

# Scholar Pledge

## *I Pledge:*

1. To be present, both physically and mentally, to absorb and internalize the information given.
2. To try my best in all that I do. Making mature and wise decisions, and holding myself accountable for my actions.
3. To do my very best to show respect, get along with my fellow scholars and staff members, and help make our STEAM Academy a peaceful and productive place for everyone.
4. To recognize Everyone is important and has their own special way of seeing and doing things. When we share our ideas, we help each other learn and grow.
5. Not to fear mistakes, but reflect, learn from them, and continue to push forward.
6. To always represent myself, the school, my family and the community by being a respectful ambassador for the city of Newark.

# Pillars for Success



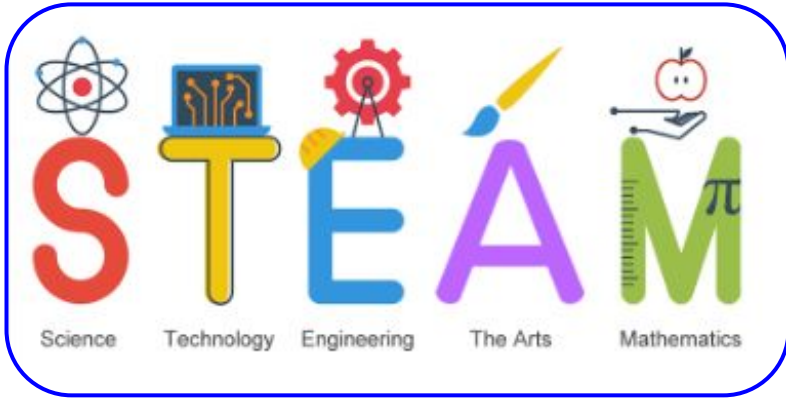
I am:  
**Respectful**  
**Responsible**  
**Reliable**  
**Resilient**  
**Resourceful**



## *School Mantra*

*“All of us are better than any one of us, as long as each of us, gives the best in us”*

# STEAM Education



## STEAM Approach

- Observe - Explore
- Create - Innovate
- Plan - Revise - Collaborate
- Publish - Share - Present

# What Should Our STEAM Academy Scholars Look Like?



marion p thomas  
CHARTER SCHOOL



## Grades PK-K-5

Navy blue polo with MPTCS logo  
Navy blue pants, skorts, or shorts  
Navy blue cardigan with MPTCS logo

## Grades 6-8

Light blue oxford shirt with MPTCS logo  
Navy Blue uniform pants, skorts, or shorts  
Navy blue ascot or tie

**ALL STUDENTS MUST WEAR BLACK SHOES OR  
SNEAKERS.**

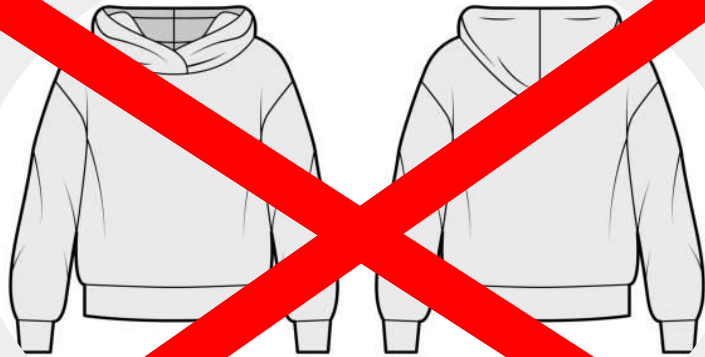
**Kids Paradise**  
1016 Springfield Ave  
Irvington NJ 07111  
973-374-4700

**Today Kids**  
1049 Springfield Ave  
Irvington NJ 07111  
973-374-3070

**Flynn O'Hara**  
196-198 Ferry Street  
Newark, NJ 07105  
862-231-2149



**NO**



**HOODIES**



**School President - Morgan D.**  
**School Vice President - Jihad H.**  
**School Secretary - Mia P.S.**  
**School Treasurer - Kevin N.**



- 8th Grade:
  - Kaylee M.
  - Eugenia K.

- 7th Grade:
  - Karissa H.
  - Caleb V.

- 6th Grade:
  - Oluwasikemi O.
  - Aanuoluwapo D.

- 5th Grade:
  - Avalyn A.
  - Carla R.

- 4th Grade:
  - William B.
  - Ava E.

- 3rd Grade:
  - Janice I.
  - Nathaniel M.

# **Staff & Student Safety**

Staff and Student safety is our top priority. Whenever we have a safety concern, our expectation is for everyone to comply.

If you see something, say something.

# March - Key Information

**3/11: Parent University - Stronger Conversations, Stronger Connections Session 2**

**3/12: Community STEAM Night @MPTCS High School from 5:00 - 7:30 pm**

**3/12: 5th Grade - Leap into Middle School Parent Meeting 5:00 - 6:00 pm**

**3/12: End of the Second Trimester**

**3/13: February Perfect Attendance Dress-Up day**

**3/13: Pi-Day Celebration (Pie Donations are Welcomed)**

**3/16: ECAC Meeting - PreK to 3rd Grade, Starts at 5:30 pm**

**3/17: 3rd Annual Math Bowl**

**3/17: Parent Council Meeting, Starts at 5:30 pm**

**\*3/18: Staff Development Day - No School for Students**

**3/19: Parent Teacher Conference (1:30 - 4:00 pm & 5:00 - 7:00 pm)**

**3/23: MPTCS Board Meeting, Starts at 5:00 pm**



Marion P. Thomas  
CHARTER SCHOOL

Community STEAM Night

# Pi Night



## Innovation in Action

Scavenger hunts

Math challenges

Creative art projects

Robotics & coding demo

## March 12

5:00 PM – 7:30 PM

Join us for a fun, family-friendly evening celebrating creativity, curiosity, and innovation. Meet our community, explore STEAM learning in action, and enjoy light dinner refreshments.

RSVP: [mptcs.org/enroll](https://mptcs.org/enroll)



125 Sussex Ave.,  
Newark, NJ

# PI DAY!



## Pie a Staff Member!



**\$3.00** Donation  
to Participate!

# FRIDAY 3/13!

# NJSLA - Adaptive

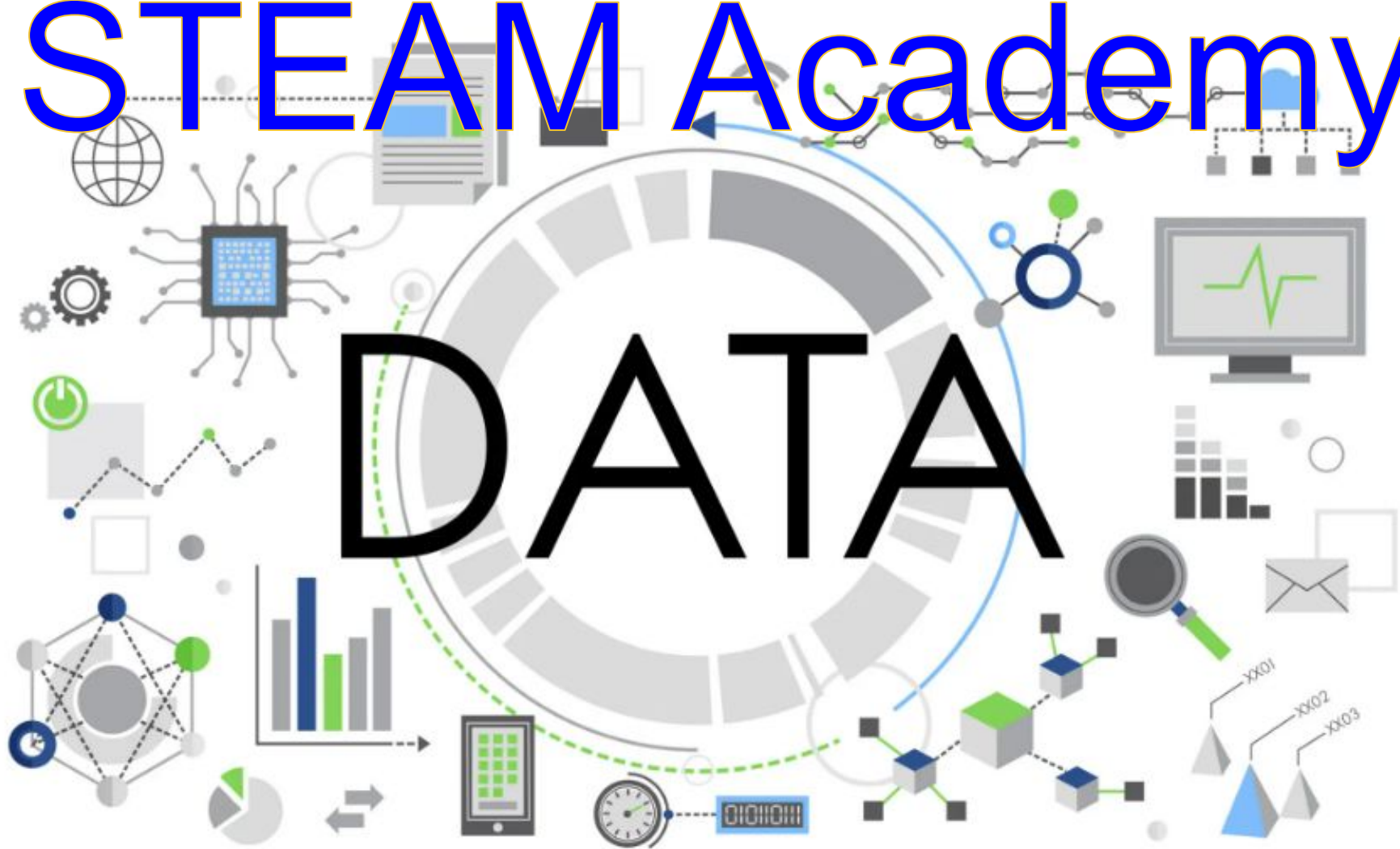
## 7 Weeks Left

The NJSLA–Adaptive is a new, computer-based, personalized assessment administered to all students in grades 3–8. This assessment dynamically adjusts the difficulty of questions in real time based on each student’s responses, allowing for a more accurate measure of their academic skills and growth.

Please be aware that NJSLA–Adaptive results become part of a student’s academic profile. These records may be reviewed by secondary schools and, in later years, institutions of higher education. As a result, it is essential that scholars approach this assessment with focus, effort, and a strong sense of responsibility.

# STEAM Academy

# DATA

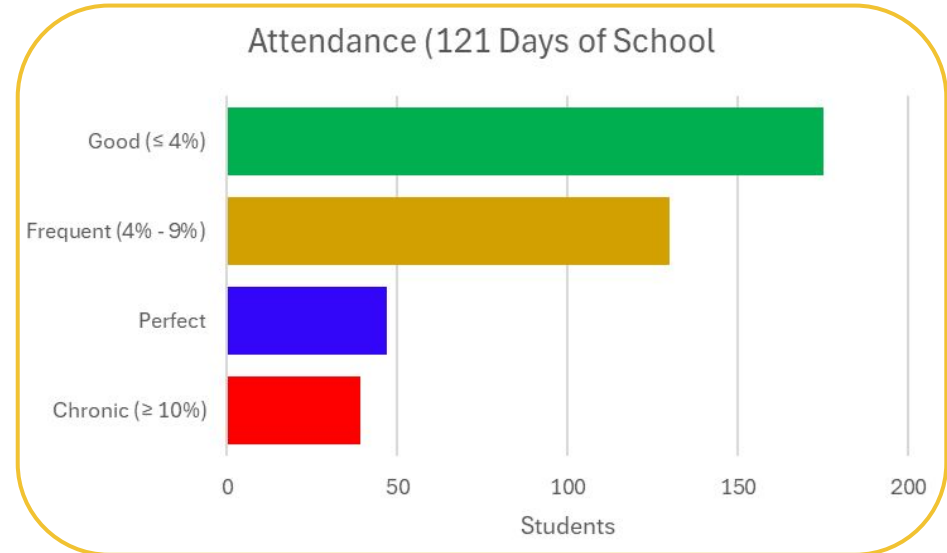


# Attendance Data - March 10, 2026

## School Goals:

- **97% Average Daily Attendance**
- **≤10% Chronic Absenteeism Rate**

Attendance (121 days)		
	Students	Percentage
<b>Perfect</b>	<b>47</b>	<b>12.0%</b>
<b>Good (≤ 4%)</b>	<b>175</b>	<b>44.8%</b>
<b>Frequent (4% - 9%)</b>	<b>130</b>	<b>33.2%</b>
<b>Chronic (≥ 10%)</b>	<b>39</b>	<b>9.97%</b>



# Chronic Absenteeism

Chronic absenteeism is when a student misses **10% or more** of the school year. As of 3/10, we have accumulated a total of **121 days of school**, chronic absenteeism applies to students who have missed **12 or more days**. For the entire school year, chronic absenteeism applies to students that miss **18 or more** days of school.

Here's how chronic absenteeism affects promotion:

- **18–20 Unexcused Absences:** Summer school will be required to make up missed seat time and be eligible for promotion
- **21+ Unexcused Absences:** The student will be required to repeat the grade due to insufficient seat time

# of students currently chronic	10-14 Absences	15-17 Absences	≥18 Absences
77 Students	49 Students	8 Students	20 Students

Our goal for the year is **≤ 10%**, which equal to **≤ 39** students.

# Attendance Data

## School Goal

### 97% Average Daily Attendance

March avg
94.49%
M
95.42%
T
94.65%
W
94.37%
Th
96.16%
F
90.79%

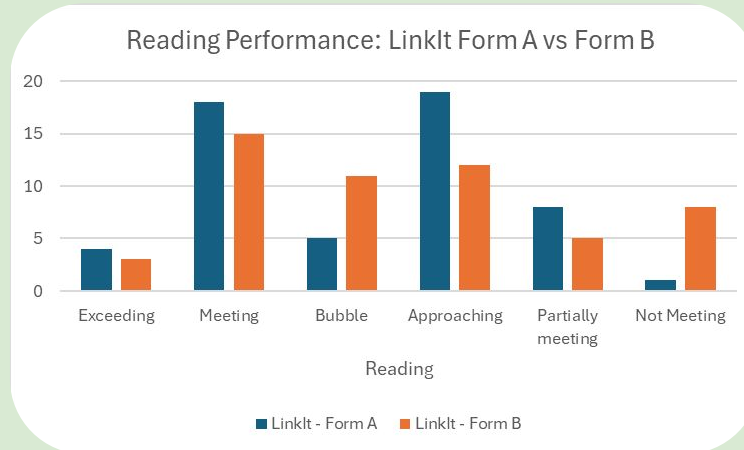
February avg	January avg	December avg	November avg	October avg	September avg
92.77%	92.57%	91.56%	93.01%	94.49%	95.95%
M	M	M	M	M	M
94.28%	93.94%	92.12%	93.65%	94.71%	95.61%
T	T	T	T	T	T
96.57%	88.30%	94.38%	95.43%	96.77%	96.45%
W	W	W	W	W	W
89.78%	95.57%	93.37%	90.25%	95.47%	96.73%
Th	Th	Th	Th	Th	Th
95.05%	96.07%	93.71%	93.69%	94.48%	97.36%
F	F	F	F	F	F
90.16%	89.66%	84.23%	91.71%	91.09%	93.50%



- ★ LinkIt is part of the 2<sup>nd</sup> Trimester grades
- ★ This will help us identify student growth and areas of improvement
- ★ This will help with preparation for the NJSLA
- ★ LinkIt is a projection of student's performance in the NJSLA (B-M-E)
  - Last year, we were able to outperform the LinkIt projections

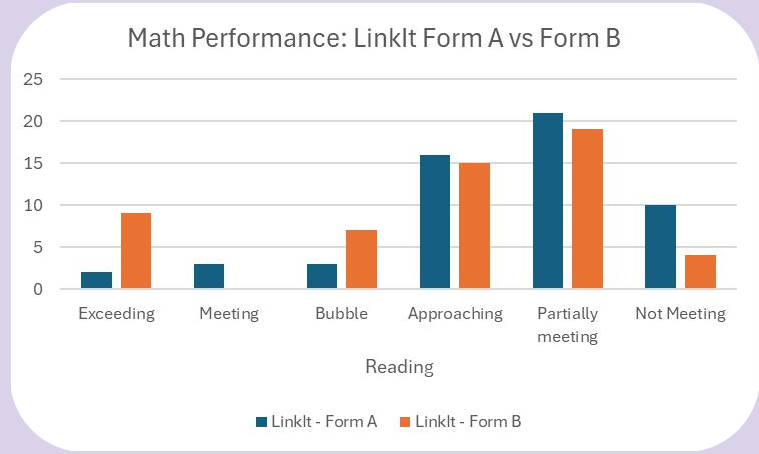
# 8th Grade - Reading

Reading	Exceeding	Meeting	Bubble	Approaching	Partially meeting	Not Meeting
LinkIt - Form A (27)	4	18	5	19	8	1
LinkIt - Form B (29)	3	15	11	12	5	8



# 8th Grade - Math

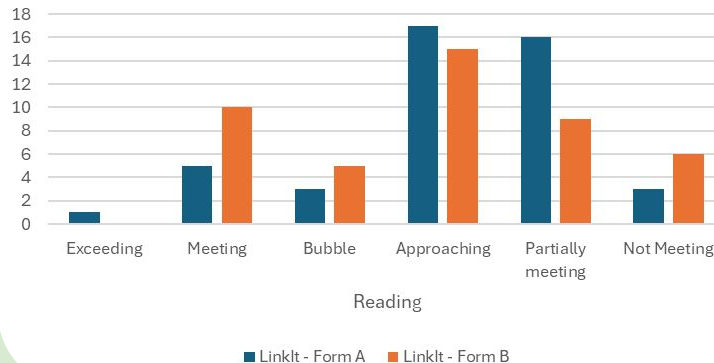
Math	Exceeding	Meeting	Bubble	Approaching	Partially meeting	Not Meeting
LinkIt - Form A (8)	2	3	3	16	21	10
LinkIt - Form B (16)	9	0	7	15	19	4



# 7th Grade - Reading

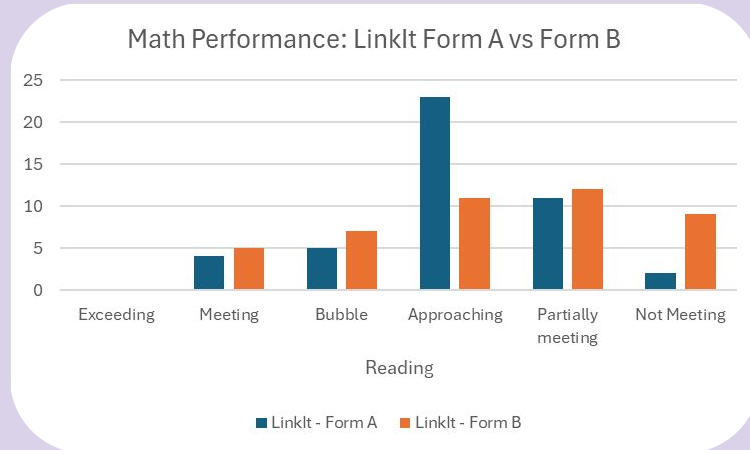
Reading	Exceeding	Meeting	Bubble	Approaching	Partially meeting	Not Meeting
LinkIt - Form A (9)	1	5	3	17	16	3
LinkIt - Form B (15)	0	10	5	15	9	6

Reading Performance: LinkIt Form A vs Form B



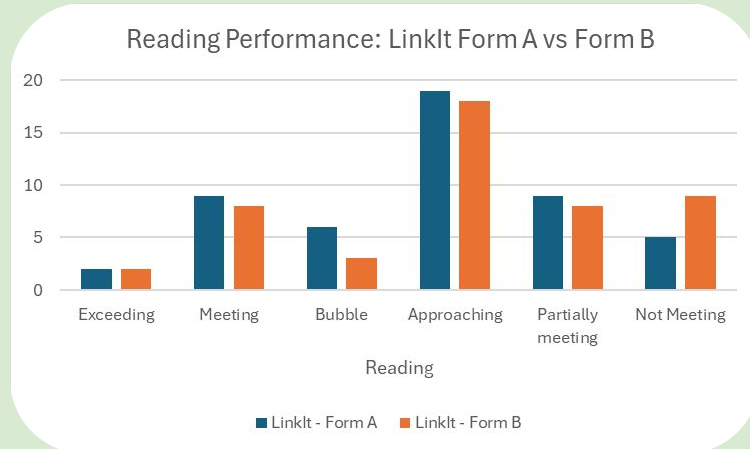
# 7th Grade - Math

Math	Exceeding	Meeting	Bubble	Approaching	Partially meeting	Not Meeting
LinkIt - Form A (9)	0	4	5	23	11	2
LinkIt - Form B (12)	0	5	7	11	12	9



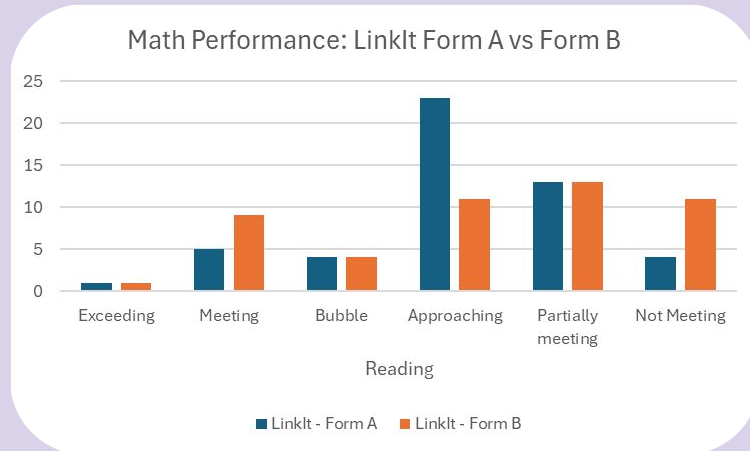
# 6th Grade - Reading

Reading	Exceeding	Meeting	Bubble	Approaching	Partially meeting	Not Meeting
LinkIt - Form A (17)	2	9	6	19	9	5
LinkIt - Form B (13)	2	8	3	18	8	9



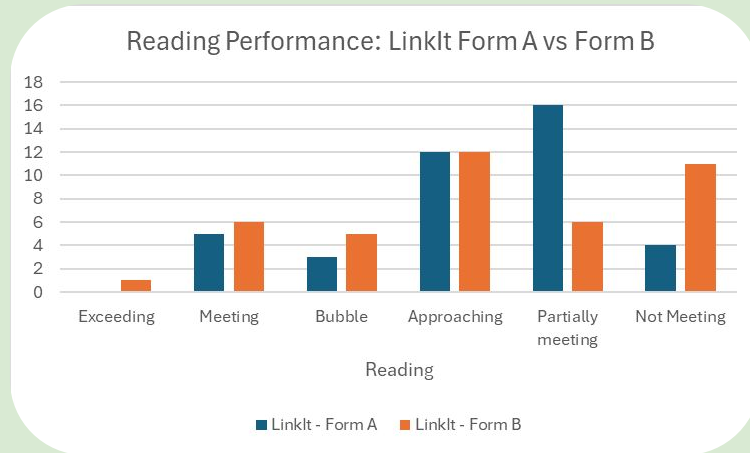
# 6th Grade - Math

Math	Exceeding	Meeting	Bubble	Approaching	Partially meeting	Not Meeting
LinkIt - Form A (10)	1	5	4	23	13	4
LinkIt - Form B (14)	1	9	4	11	13	11



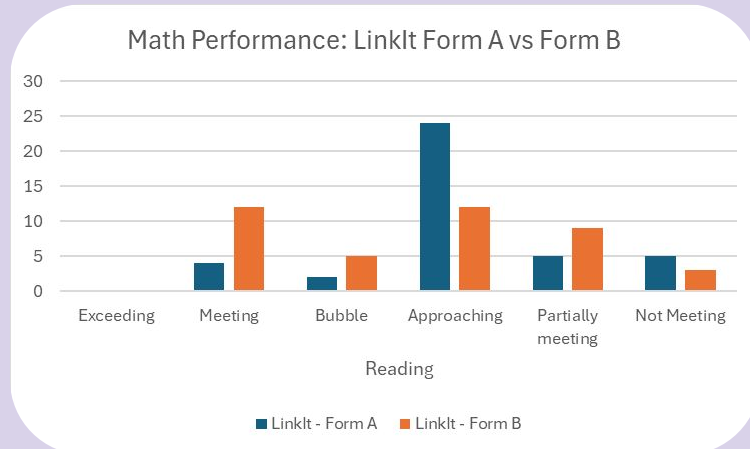
# 5th Grade - Reading

Reading	Exceeding	Meeting	Bubble	Approaching	Partially meeting	Not Meeting
LinkIt - Form A (8)	0	5	3	12	16	4
LinkIt - Form B (12)	1	6	5	12	6	11



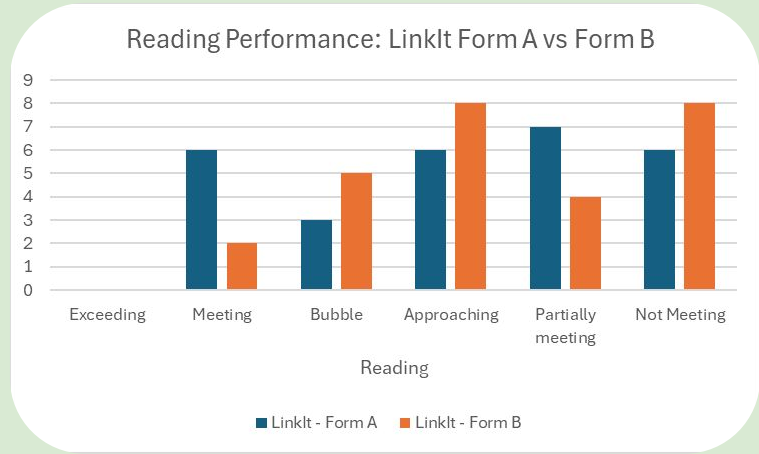
# 5th Grade - Math

Math	Exceeding	Meeting	Bubble	Approaching	Partially meeting	Not Meeting
LinkIt - Form A (6)	0	4	2	24	5	5
LinkIt - Form B (17)	0	12	5	12	9	3



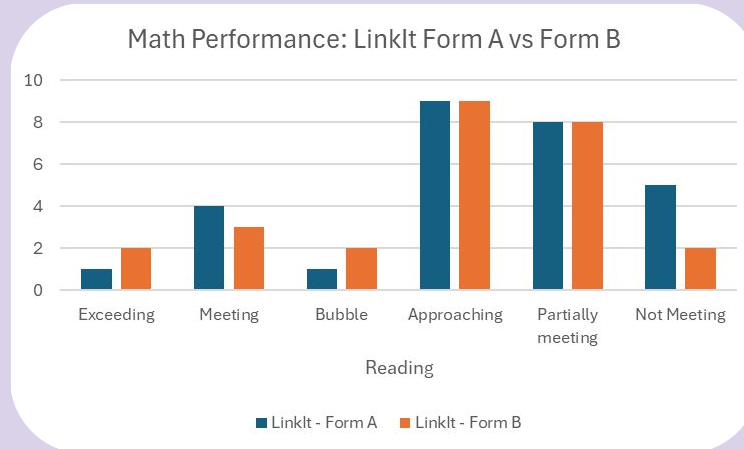
# 4th Grade - Reading

Reading	Exceeding	Meeting	Bubble	Approaching	Partially meeting	Not Meeting
LinkIt - Form A (9)	0	6	3	6	7	6
LinkIt - Form B (7)	0	2	5	8	4	8



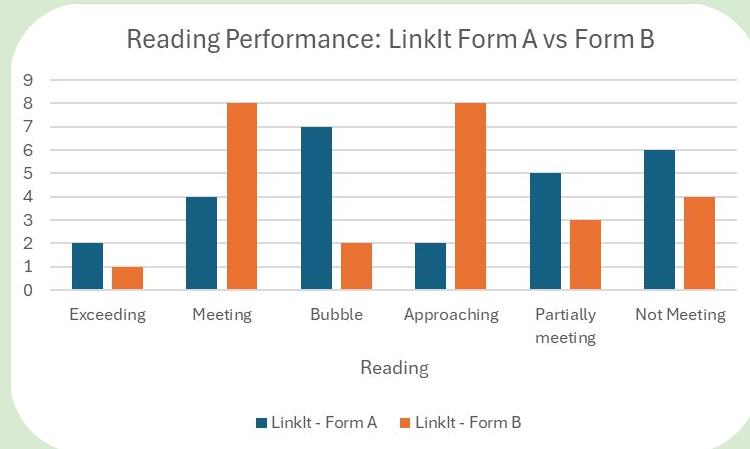
# 4th Grade - Math

Math	Exceeding	Meeting	Bubble	Approaching	Partially meeting	Not Meeting
LinkIt - Form A (6)	1	4	1	9	8	5
LinkIt - Form B (7)	2	3	2	9	8	2



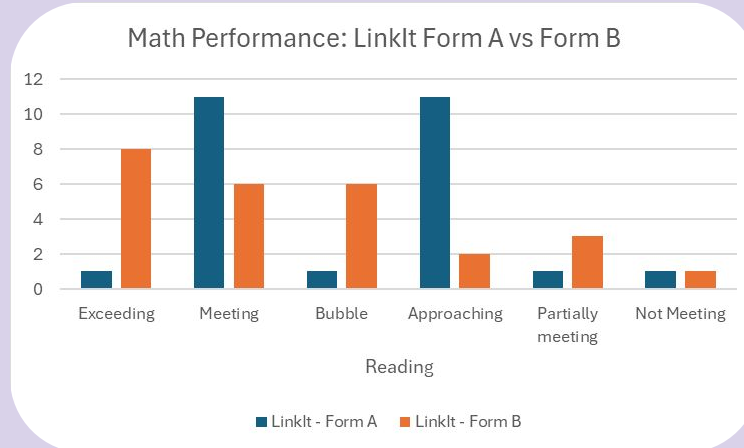
# 3rd Grade - Reading

Reading	Exceeding	Meeting	Bubble	Approaching	Partially meeting	Not Meeting
LinkIt - Form A (13)	2	4	7	2	5	6
LinkIt - Form B (11)	1	8	2	8	3	4



# 3rd Grade - Math

Math	Exceeding	Meeting	Bubble	Approaching	Partially meeting	Not Meeting
LinkIt - Form A (13)	1	11	1	11	1	1
LinkIt - Form B (20)	8	6	6	2	3	1

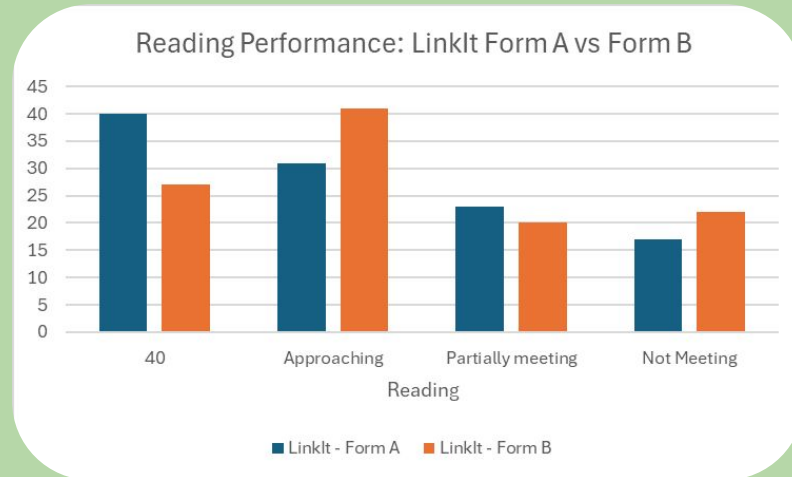


# NJSLA Data

	Last Year	LinkIt A	LinkIt B
ELA	42%	33.7%	35.4%
Math	18%	21.1%	35%

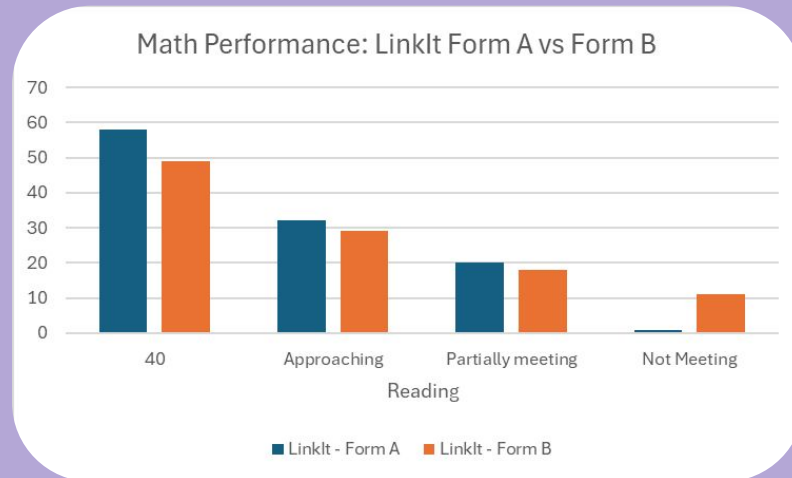
# K-2 - Reading

Reading	Meeting	Approaching	Partially meeting	Not Meeting
LinkIt - Form A (40)	40	31	23	17
LinkIt - Form B (27)	27	41	20	22



# K-2- Math

Math	Meeting	Approaching	Partially meeting	Not Meeting
LinkIt - Form A (58)	58	32	20	1
LinkIt - Form B (20)	49	29	18	11



# Stay in the know!



## PARENT PORTAL

Parent Access is currently at 55%



**QUESTIONS?**

**COMMENTS?**

**CONCERNS?**