

LEA Name : Lower Merion SD
Address : 301 E Montgomery Ave
Ardmore , PA 19003

County : Montgomery
AUN Number : 123464502
LEA Type : SD

REVISED SUBMISSION

Annual Financial Report Accuracy Certification Statement

For Fiscal Year Ending
6/30/2025

Pennsylvania Department of Education
&
Office of Comptroller Operations

PDE-2056: Intermediate Unit
PDE-2057: School District, AVTS/CTC, Charter School,
and Special Program Jointure

CERTIFICATION: By signing this page I agree that the electronic data submitted is a complete and accurate statement of the financial operations and status of the local education agency for the fiscal year. It has been prepared in accordance with generally accepted accounting principles and established Commonwealth of PA reporting guidelines.

Chief School Administrator Signature

Date

Board Secretary Signature

Date

Victor Orlando

Contact Person

orlandv@lmsd.org

Contact Person E-mail Address

(610)645-1800 Ext :

Contact Person Telephone Number

(610)645-9772

Contact Person Fax Number

Audit Certification
Annual Financial Report:
For Fiscal Year Ending **6/30/2025**
(Pursuant to PA School Code Section 218(b))

LEA Name : Lower Merion SD
AUN Number : 123464502
County : Montgomery

REVISED SUBMISSION

Audit Certification Due: 12/31/2025

This certification is applicable to the Annual Financial Report data submitted through the Consolidated Financial Reporting System (CFRS).

CERTIFICATION: By signing this page I agree that the financial statements of the school have been properly audited as noted above pursuant to Article XXIV, and in the auditor's professional opinion, the Annual Financial Report (PDE-2057) submitted through CFRS is materially consistent with the audited financial statements.

Chief School Administrator

Board Secretary

Signature

Date

Signature

Date

Victor Orlando

Contact Person

orlandv@lmsd.org

Contact Person E-mail Address

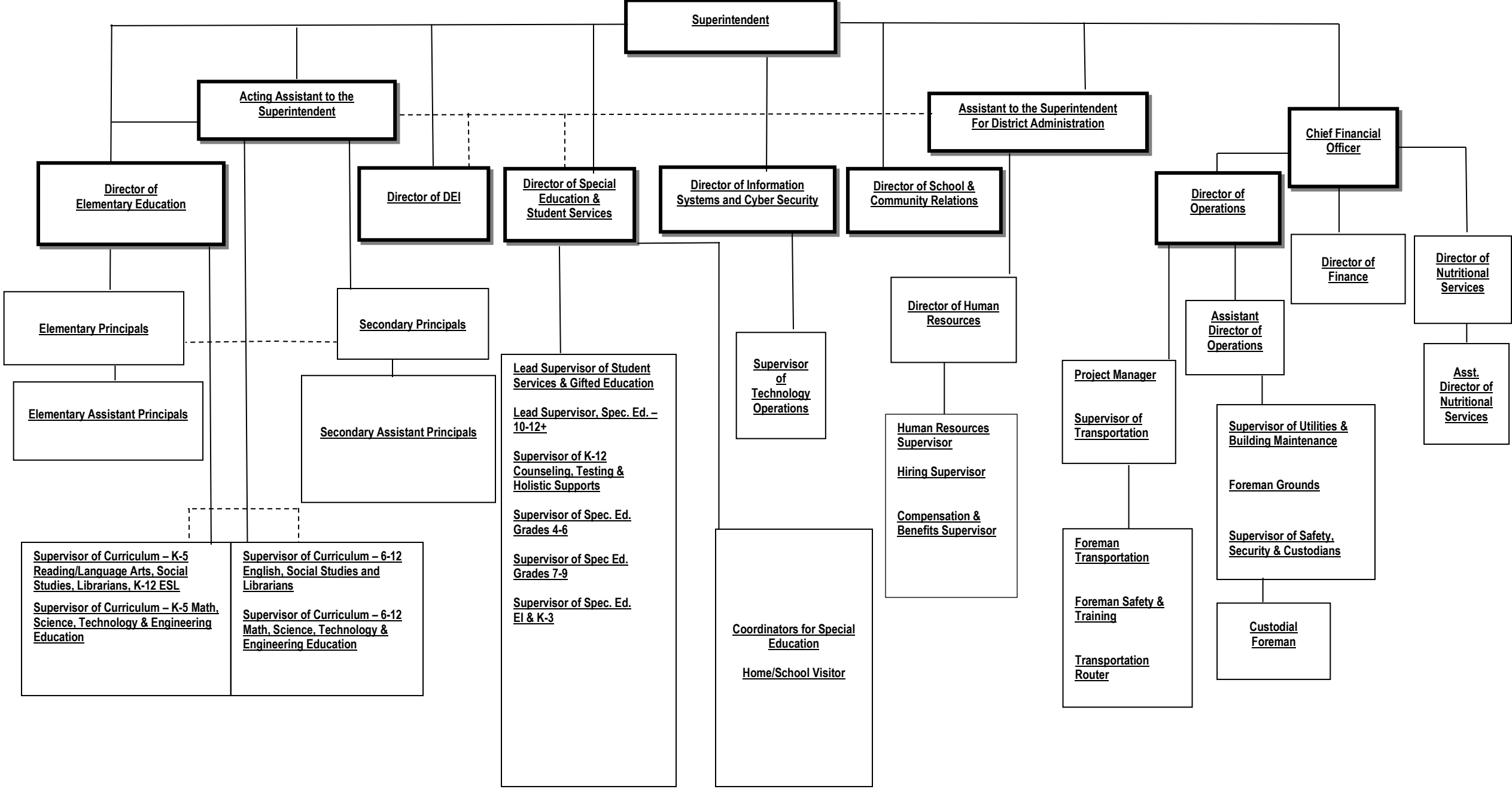
(610)645-1800 Ext :

Contact Person Telephone Number

(610)645-9772

Contact Person Fax Number

**Lower Merion School District
Organizational Chart**



Capitalization

Definition

Capital assets shall include but limited to land, improvements to land, easements, buildings, building improvements, vehicles, machinery, equipment, works of art and historical treasures and infrastructure. Capital assets are both tangible and intangible assets used in operations and have initial useful lives extending beyond a single reporting period. Equipment will not change its original shape, appearance or character with use and it can be expected to last more than one (1) year with reasonable care and maintenance.

Guidelines

Purchased Capital Assets

Purchased capital assets of \$5,000 or greater should be recorded at their historical/original cost. The cost of capital assets should include capitalized interest and ancillary charges necessary to place the asset into service. Ancillary charges include freight, site preparation and professional fees.

Capital assets should be depreciated over their useful lives as determined for each asset class. Inexhaustible capital assets such as land and land improvements should not be depreciated.

If determining historical costs is not practical due to inadequate records, reporting should be based on estimates of original cost at the date of construction or purchase.

Fixed asset records must include the acquisition date, cost, useful life, depreciation method and salvage value for capital asset classifications and groups.

Infrastructure

Infrastructure assets are long-lived capital assets that normally are stationary in nature and can normally be preserved for a significantly greater number of years than most capital assets. Infrastructure includes parking lots and sidewalks.

Infrastructure assets should be depreciated over the useful lives.

Routine repairs and maintenance costs are charges to operations as incurred. Expenditures that extend the useful life of the infrastructure are capitalized as part of the asset and depreciated over the newly established useful life.

Useful Lives

Fixed assets are to be depreciated over the following useful lives:

<u>Asset Class</u>	<u>Years</u>
School buildings	40-50
HVAC systems	20-25
Interior/Exterior construction	20-30
Sprinkler/Fire system	20-25
Outdoor equipment	15-20
Machinery and tools	10-15
Kitchen equipment	10-15
Custodial equipment	05-07
Furniture and accessories	15-20
Business machines	05-10
Vehicles	05-15
Audiovisual/Communication equipment	05-10

Depreciation Expense

Depreciation is allocated to expense in a systematic and rational manner. The straight-line method of depreciation is to be used.

Depreciation may be calculated for a class of assets, a network of assets or individual assets.

Disposals

Sale of Fixed Assets: When fixed assets are sold, a calculation of gain or loss on disposal is required. The calculation is based upon the amount of proceeds received less the net book value (cost less accumulated depreciation taken on the asset).

Trade-ins: The value given for a trade is part of the cost of the newly acquired asset. The costs and accumulated depreciation of the traded-in asset must be removed from the books. Any gain or loss resulting from the disposition of the asset will be recognized as a gain or loss on disposal.

REVISED SUBMISSION

<u>Val Number</u>	<u>Description</u>	<u>Justification</u>
42420	<p>Expenditure Detail: Total current year 2700-513 expenditure varies from prior year by 10%. Correct the data or enter a justification.</p> <p>2700-513, AFR Exp Detail: \$4,877,187.03 2700-513, PY AFR Amount: \$4,181,734.44</p>	<p>More contracted services were required in 24/25 due to increase demand for special education transportation services and an increase in the number of McKinney-Vento students. Also, contracted rates have increased from the prior year.</p>

Amounts Expressed in Whole Dollars

	<u>General Fund</u> <u>(10)</u>	<u>Student Sponsored</u> <u>Activity Fund</u> <u>(21)</u>	<u>Public Purpose Trust</u> <u>(27)</u>	<u>Other Compt Approved</u> <u>(28)</u>	<u>Athletic / Activity</u> <u>(29)</u>
Assets And Deferred Outflows Of Resources					
Assets					
0100 Cash and Cash Equivalents	48,059,057				
0110 Investments	4,228,858				
0120 Taxes Receivable	2,998,537				
0130 Due From Other Funds	804,699				
0141 Due From Other Governments	13,823,086				
0142 State Revenue Receivable					
0143 Federal Revenue Receivable					
0145 Other Intergovernmental Revenue Receivable					
0146 Due from Primary Government					
0147 Due from Component Unit					
0150 Other Receivables	373,500				
0170 Inventories					
0180 Prepaid Expenses (Expenditures)	696,088				
0190 Other Current Assets					
Total Assets	\$70,983,825				
0910 Deferred Outflows of Resources					
Total Assets And Deferred Outflows Of Resources	\$70,983,825				

LEA : 123464502 Lower Merion SD

Printed 3/11/2026 9:14:08 AM

REVISED SUBMISSION

Amounts Expressed in Whole Dollars

	<u>Capital Reserve (690.</u> <u>1850)</u> <u>(31)</u>	<u>Capital Reserve (1431)</u> <u>(32)</u>	<u>Other Capital Projects</u> <u>Fund</u> <u>(39)</u>	<u>Debt Service</u> <u>(40)</u>	<u>Permanent</u> <u>(90)</u>
Assets And Deferred Outflows Of Resources					
Assets					
0100 Cash and Cash Equivalents		8,128,021	3,400,378	3,900,614	
0110 Investments					
0120 Taxes Receivable					
0130 Due From Other Funds					
0141 Due From Other Governments					
0142 State Revenue Receivable					
0143 Federal Revenue Receivable					
0145 Other Intergovernmental Revenue Receivable					
0146 Due from Primary Government					
0147 Due from Component Unit					
0150 Other Receivables					
0170 Inventories					
0180 Prepaid Expenses (Expenditures)					
0190 Other Current Assets					
Total Assets		\$8,128,021	\$3,400,378	\$3,900,614	
0910 Deferred Outflows of Resources					
Total Assets And Deferred Outflows Of Resources		\$8,128,021	\$3,400,378	\$3,900,614	

Amounts Expressed in Whole Dollars

Total Governmental Funds

Assets And Deferred Outflows Of Resources

Assets	
0100 Cash and Cash Equivalents	63,488,070
0110 Investments	4,228,858
0120 Taxes Receivable	2,998,537
0130 Due From Other Funds	804,699
0141 Due From Other Governments	13,823,086
0142 State Revenue Receivable	
0143 Federal Revenue Receivable	
0145 Other Intergovernmental Revenue Receivable	
0146 Due from Primary Government	
0147 Due from Component Unit	
0150 Other Receivables	373,500
0170 Inventories	
0180 Prepaid Expenses (Expenditures)	696,088
0190 Other Current Assets	
Total Assets	\$86,412,838
0910 Deferred Outflows of Resources	
Total Assets And Deferred Outflows Of Resources	\$86,412,838

LEA : 123464502 Lower Merion SD

Printed 3/11/2026 9:14:08 AM

REVISED SUBMISSION

Amounts Expressed in Whole Dollars

	<u>General Fund</u> <u>(10)</u>	<u>Student Sponsored</u> <u>Activity Fund</u> <u>(21)</u>	<u>Public Purpose Trust</u> <u>(27)</u>	<u>Other Compt Approved</u> <u>(28)</u>	<u>Athletic / Activity</u> <u>(29)</u>
Liabilities And Deferred Inflows Of Resources And Fund Balances					
Liabilities					
0400 Due to Other Funds	358,537				
0411 Due to Other Governments					
0412 Due to Primary Government					
0413 Due to Component Unit					
0420 Accounts Payable	5,585,202				
0430 Contracts Payable					
0440 Current Portion of Long-Term Debt					
0450 Short-Term Payables					
0461 Accrued Salaries and Benefits	38,201,384				
0462 Payroll Deductions and Withholding					
0480 Unearned Revenues	(373,462)				
0490 Other Current Liabilities					
Total Liabilities	\$43,771,661				
0950 Deferred Inflows of Resources	2,998,537				
Fund Balances					
0810 Nonspendable Fund Balance	696,088				
0820 Restricted Fund Balance	4,000,000				
0830 Committed Fund Balance	13,300,000				
0840 Assigned Fund Balance					
0850 Unassigned Fund Balance	6,217,539				
Total Fund Balances	\$24,213,627				
Total Liabilities, Deferred Inflows Of Resources And Fund Balances	\$70,983,825				

LEA : 123464502 Lower Merion SD

Printed 3/11/2026 9:14:08 AM

REVISED SUBMISSION

Amounts Expressed in Whole Dollars

	<u>Capital Reserve (690.</u> <u>1850)</u> <u>(31)</u>	<u>Capital Reserve (1431)</u> <u>(32)</u>	<u>Other Capital Projects</u> <u>Fund</u> <u>(39)</u>	<u>Debt Service</u> <u>(40)</u>	<u>Permanent</u> <u>(90)</u>
Liabilities And Deferred Inflows Of Resources And Fund Balances					
Liabilities					
0400 Due to Other Funds					
0411 Due to Other Governments					
0412 Due to Primary Government					
0413 Due to Component Unit					
0420 Accounts Payable		106,848	450,399		
0430 Contracts Payable					
0440 Current Portion of Long-Term Debt					
0450 Short-Term Payables					
0461 Accrued Salaries and Benefits					
0462 Payroll Deductions and Withholding					
0480 Unearned Revenues					
0490 Other Current Liabilities					
Total Liabilities		\$106,848	\$450,399		
0950 Deferred Inflows of Resources					
Fund Balances					
0810 Nonspendable Fund Balance					
0820 Restricted Fund Balance		8,021,173	2,949,979	3,900,614	
0830 Committed Fund Balance					
0840 Assigned Fund Balance					
0850 Unassigned Fund Balance					
Total Fund Balances		\$8,021,173	\$2,949,979	\$3,900,614	
Total Liabilities, Deferred Inflows Of Resources And Fund Balances		\$8,128,021	\$3,400,378	\$3,900,614	

Amounts Expressed in Whole Dollars

Total Governmental Funds

Liabilities And Deferred Inflows Of Resources And Fund Balances

Liabilities

0400 Due to Other Funds	358,537
0411 Due to Other Governments	
0412 Due to Primary Government	
0413 Due to Component Unit	
0420 Accounts Payable	6,142,449
0430 Contracts Payable	
0440 Current Portion of Long-Term Debt	
0450 Short-Term Payables	
0461 Accrued Salaries and Benefits	38,201,384
0462 Payroll Deductions and Withholding	
0480 Unearned Revenues	(373,462)
0490 Other Current Liabilities	

Total Liabilities \$44,328,908

0950 Deferred Inflows of Resources	2,998,537
------------------------------------	-----------

Fund Balances

0810 Nonspendable Fund Balance	696,088
0820 Restricted Fund Balance	18,871,766
0830 Committed Fund Balance	13,300,000
0840 Assigned Fund Balance	
0850 Unassigned Fund Balance	6,217,539

Total Fund Balances \$39,085,393

Total Liabilities, Deferred Inflows Of Resources And Fund Balances \$86,412,838

LEA : 123464502 Lower Merion SD

Printed 3/11/2026 9:14:13 AM

REVISED SUBMISSION

Amounts Expressed in Whole Dollars	<u>General Fund</u> <u>(10)</u>	<u>Student Sponsored</u> <u>Activity Fund</u> <u>(21)</u>	<u>Public Purpose Trust</u> <u>(27)</u>	<u>Other Compt Approved</u> <u>(28)</u>	<u>Athletic / Activity</u> <u>(29)</u>
Revenues					
6000 Revenue from Local Sources	273,677,974				
7000 Revenue from State Sources	50,086,261				
8000 Revenue from Federal Sources	2,384,883				
Total Revenues	\$326,149,118				
Expenditures					
1000 Instruction	187,881,236				
2000 Support Services	101,237,505				
3000 Operation of Non-Instructional Services	6,580,097				
4000 Facilities Acquisition, Construction and Improvement Services					
5110 Debt Service	28,912,135				
5130 Refund of Prior Year Revenues / Receipts	95,647				
5140 Leases and Other Right-to-Use Arrangements	258,757				
Total Expenditures	\$324,965,377				
Excess (Deficiency) Of Revenues Over Expenditures	\$1,183,741				
Other Financing Sources (Uses)					
9110 Face Value of Bonds Issued					
9120 Proceeds from Refunding of Bonds					
9130 Bond Premiums					
9200 Proceeds from Extended Term Financing, Leases, and Other Right-to-Use Arrangements					
9300 Interfund Transfers - IN					
9400 Sale of or Compensation for Loss of Fixed Assets					
9710 Transfers from Component Units					
9720 Transfers from Primary Governments					
9910 Other Financing Sources Not Listed in the 9000 Series					
9990 Insurance Recoveries					
5120 Debt Service – Refunded Bonds					
5150 Bond Discounts					
5200 Interfund Transfers – Out	4,000,000				
5300 Transfers Out to Component Units/Primary Governments					
Total Other Financing Sources (Uses)	(\$4,000,000)				

LEA : 123464502 Lower Merion SD

Printed 3/11/2026 9:14:13 AM

REVISED SUBMISSION

Amounts Expressed in Whole Dollars	<u>Capital Reserve (690.1850)</u> <u>(31)</u>	<u>Capital Reserve (1431)</u> <u>(32)</u>	<u>Other Capital Projects</u> <u>Fund</u> <u>(39)</u>	<u>Debt Service</u> <u>(40)</u>	<u>Permanent</u> <u>(90)</u>
Revenues					
6000 Revenue from Local Sources		224,240	178,905	212,041	
7000 Revenue from State Sources					
8000 Revenue from Federal Sources					
Total Revenues		\$224,240	\$178,905	\$212,041	
Expenditures					
1000 Instruction					
2000 Support Services		3,914,564	2,145,119		
3000 Operation of Non-Instructional Services					
4000 Facilities Acquisition, Construction and Improvement Services			200,257		
5110 Debt Service				1,082,400	
5130 Refund of Prior Year Revenues / Receipts					
5140 Leases and Other Right-to-Use Arrangements					
Total Expenditures		\$3,914,564	\$2,345,376	\$1,082,400	
Excess (Deficiency) Of Revenues Over Expenditures		(\$3,690,324)	(\$2,166,471)	(\$870,359)	
Other Financing Sources (Uses)					
9110 Face Value of Bonds Issued					
9120 Proceeds from Refunding of Bonds					
9130 Bond Premiums					
9200 Proceeds from Extended Term Financing, Leases, and Other Right-to-Use Arrangements			594,577		
9300 Interfund Transfers - IN		4,000,000			
9400 Sale of or Compensation for Loss of Fixed Assets					
9710 Transfers from Component Units					
9720 Transfers from Primary Governments					
9910 Other Financing Sources Not Listed in the 9000 Series					
9990 Insurance Recoveries					
5120 Debt Service – Refunded Bonds					
5150 Bond Discounts					
5200 Interfund Transfers – Out					
5300 Transfers Out to Component Units/Primary Governments					
Total Other Financing Sources (Uses)		\$4,000,000	\$594,577		

Amounts Expressed in Whole Dollars	<u>Total Governmental Funds</u>
Revenues	
6000 Revenue from Local Sources	274,293,160
7000 Revenue from State Sources	50,086,261
8000 Revenue from Federal Sources	2,384,883
Total Revenues	\$326,764,304
Expenditures	
1000 Instruction	187,881,236
2000 Support Services	107,297,188
3000 Operation of Non-Instructional Services	6,580,097
4000 Facilities Acquisition, Construction and Improvement Services	200,257
5110 Debt Service	29,994,535
5130 Refund of Prior Year Revenues / Receipts	95,647
5140 Leases and Other Right-to-Use Arrangements	258,757
Total Expenditures	\$332,307,717
Excess (Deficiency) Of Revenues Over Expenditures	(\$5,543,413)
Other Financing Sources (Uses)	
9110 Face Value of Bonds Issued	
9120 Proceeds from Refunding of Bonds	
9130 Bond Premiums	
9200 Proceeds from Extended Term Financing, Leases, and Other Right-to-Use Arrangements	594,577
9300 Interfund Transfers - IN	4,000,000
9400 Sale of or Compensation for Loss of Fixed Assets	
9710 Transfers from Component Units	
9720 Transfers from Primary Governments	
9910 Other Financing Sources Not Listed in the 9000 Series	
9990 Insurance Recoveries	
5120 Debt Service – Refunded Bonds	
5150 Bond Discounts	
5200 Interfund Transfers – Out	4,000,000
5300 Transfers Out to Component Units/Primary Governments	
Total Other Financing Sources (Uses)	\$594,577

REVISED SUBMISSION

Amounts Expressed in Whole Dollars

	<u>General Fund</u> <u>(10)</u>	<u>Student Sponsored</u> <u>Activity Fund</u> <u>(21)</u>	<u>Public Purpose Trust</u> <u>(27)</u>	<u>Other Compt Approved</u> <u>(28)</u>	<u>Athletic / Activity</u> <u>(29)</u>
Special And Extraordinary Items					
9920 Special Items – Gains					
9930 Extraordinary Items – Gains					
5520 Special Items – Losses					
5530 Extraordinary Items – Losses					
Net Change In Fund Balances	(\$2,816,259)				
Fund Balance					
0001 Fund Balance - Beginning of Fiscal Year	27,029,886				
Fund Balance - End Of Year	\$24,213,627				

REVISED SUBMISSION

Amounts Expressed in Whole Dollars	<u>Capital Reserve (690.1850)</u> <u>(31)</u>	<u>Capital Reserve (1431)</u> <u>(32)</u>	<u>Other Capital Projects</u> <u>Fund</u> <u>(39)</u>	<u>Debt Service</u> <u>(40)</u>	<u>Permanent</u> <u>(90)</u>
Special And Extraordinary Items					
9920 Special Items – Gains					
9930 Extraordinary Items – Gains					
5520 Special Items – Losses					
5530 Extraordinary Items – Losses					
Net Change In Fund Balances		\$309,676	(\$1,571,894)	(\$870,359)	
Fund Balance					
0001 Fund Balance - Beginning of Fiscal Year		7,711,497	4,521,873	4,770,973	
Fund Balance - End Of Year		\$8,021,173	\$2,949,979	\$3,900,614	

Amounts Expressed in Whole Dollars

Total Governmental Funds

Special And Extraordinary Items

- 9920 Special Items – Gains
- 9930 Extraordinary Items – Gains
- 5520 Special Items – Losses
- 5530 Extraordinary Items – Losses

Net Change In Fund Balances **(\$4,948,836)**

Fund Balance

0001 Fund Balance - Beginning of Fiscal Year 44,034,229

Fund Balance - End Of Year **\$39,085,393**

REVISED SUBMISSION

Amounts Expressed in Whole Dollars

	<u>Food Service</u> <u>(51)</u>	<u>Child Care</u> <u>Operations</u> <u>(52)</u>	<u>Other Enterprise</u> <u>(58)</u>	<u>TOTAL</u>	<u>Internal Service</u> <u>(60)</u>
Assets And Deferred Outflows Of Resources					
Current Assets					
0100 Cash and Cash Equivalents	3,201,377			3,201,377	
0110 Investments					
0130 Due From Other Funds	358,537			358,537	
0141 Due From Other Governments	417,587			417,587	
0142 State Revenue Receivable					
0143 Federal Revenue Receivable					
0146 Due from Primary Government					
0147 Due from Component Unit					
0150 Other Receivables	27,188			27,188	
0170 Inventories	128,027			128,027	
0180 Prepaid Expenses (Expenditures)					
0190 Other Current Assets					
Total Current Assets	\$4,132,716			\$4,132,716	
Noncurrent Assets					
0211 Land					
0212 Site Improvements (Net)					
0220 Buildings and Building Improvements (Net)					
0230 Tangible Property and Intangible Right-To-Use Assets (Net)	150,569			150,569	
0250 Construction in Progress					
0260 Long Term Prepayments					
0290 Other Noncurrent Assets					
Total Noncurrent Assets	\$150,569			\$150,569	
0910 Deferred Outflows of Resources	559,128			559,128	
Total Assets And Deferred Outflows Of Resources	\$4,842,413			\$4,842,413	

Amounts Expressed in Whole Dollars	<u>Food Service</u> <u>(51)</u>	<u>Child Care</u> <u>Operations</u> <u>(52)</u>	<u>Other Enterprise</u> <u>(58)</u>	<u>TOTAL</u>	<u>Internal Service</u> <u>(60)</u>
Liabilities And Deferred Inflows Of Resources And Net Position					
Current Liabilities					
0400 Due to Other Funds	804,699			804,699	
0411 Due to Other Governments					
0413 Due to Component Unit					
0420 Accounts Payable	82,938			82,938	
0430 Contracts Payable					
0440 Current Portion of Long-Term Debt					
0450 Short-Term Payables					
0461 Accrued Salaries and Benefits					
0462 Payroll Deductions and Withholding					
0480 Unearned Revenues	281,304			281,304	
0490 Other Current Liabilities					
Total Current Liabilities	\$1,168,941			\$1,168,941	
Noncurrent Liabilities					
0510 Bonds Payable					
0520 Extended-Term Financing Agreements Payable					
0530 Lease and Other Right-To-Use Obligations					
0540 Accumulated Compensated Absences					
0550 Authority Lease Obligations					
0560 Other Post-Employment Benefits (OPEB)	152,778			152,778	
0570 Net Pension Liability	3,619,615			3,619,615	
0599 Other Noncurrent Liabilities					
Total Noncurrent Liabilities	\$3,772,393			\$3,772,393	
Total Liabilities	\$4,941,334			\$4,941,334	
0950 Deferred Inflows of Resources	88,467			88,467	
Net Position					
0791 Net Investment in Capital Assets	150,569			150,569	
0008 Restricted Net Position (0792 – 0798)					
0799 Unrestricted Net Position	(337,957)			(337,957)	
Total Net Position	(\$187,388)			(\$187,388)	
Total Liabilities And Deferred Inflows Of Resources And Net Position	\$4,842,413			\$4,842,413	

Amounts Expressed in Whole Dollars	<u>Food Service</u> <u>(51)</u>	<u>Child Care Operations</u> <u>(52)</u>	<u>Other Enterprise</u> <u>(58)</u>	<u>TOTAL</u>	<u>Internal Service</u> <u>(60)</u>
Operating Revenues					
6600 Food Service Revenue	3,068,491			3,068,491	
0071 Charges for Services					
0072 Other Operating Revenue					
Total Operating Revenues	\$3,068,491			\$3,068,491	
Operating Expenses					
100 Personnel Services – Salaries	1,732,294			1,732,294	
200 Personnel Services – Employee Benefits	1,311,345			1,311,345	
300 Purchased Professional and Technical Services	2,139			2,139	
400 Purchased Property Services	53,630			53,630	
500 Other Purchased Services	1,215			1,215	
600 Supplies	2,487,839			2,487,839	
740 Depreciation	32,659			32,659	
770 Amortization Expense					
810 Dues and Fees	6,686			6,686	
880 Refunds of Prior Years' Receipts					
890 Miscellaneous Expenditures					
Total Operating Expenses	\$5,627,807			\$5,627,807	
Operating Income (Loss)	(\$2,559,316)			(\$2,559,316)	
Non Operating Revenues (Expenses)					
6500 Earnings on Investments	160,030			160,030	
6830 Federal Revenue from Intermediary Sources					
6920 Contributions and Donations from Private Sources					
6930 Gains or Losses on Sale of Fixed Assets					
6991 Refunds of a Prior Year Expenditure					
7000 Revenue from State Sources	784,095			784,095	
8000 Revenue from Federal Sources	1,391,706			1,391,706	
9990 Insurance Recoveries					
820 Claims and Judgments Against the LEA					
830 Interest					
TOTAL Non Operating Revenues (Expenses)	\$2,335,831			\$2,335,831	
Income (Loss) Before Contributions And Transfers	(\$223,485)			(\$223,485)	

REVISED SUBMISSION

Amounts Expressed in Whole Dollars	<u>Food Service</u> <u>(51)</u>	<u>Child Care Operations</u> <u>(52)</u>	<u>Other Enterprise</u> <u>(58)</u>	<u>TOTAL</u>	<u>Internal Service</u> <u>(60)</u>
Contributions, Transfers, and Special and Extraordinary Items					
5200 Interfund Transfers – Out					
5300 Transfers Out to Component Units/Primary Governments					
5520 Special Items – Losses					
5530 Extraordinary Items – Losses					
9300 Interfund Transfers - IN					
9500 Capital Contributions					
9700 Transfers IN From Component Units/Primary Governments					
9920 Special Items – Gains					
9930 Extraordinary Items – Gains					
Change In Net Position	(\$223,485)			(\$223,485)	
0002 Net Position - Beginning of Fiscal Year	36,097			36,097	
0003 Accounting Changes / Residual Equity Transfers					
Net Position - End Of Year	(\$187,388)			(\$187,388)	

LEA : 123464502 Lower Merion SD

Printed 3/11/2026 9:14:25 AM

REVISED SUBMISSION

Amounts Expressed in Whole Dollars	<u>Food Service</u> <u>(51)</u>	<u>Child Care Operations</u> <u>(52)</u>	<u>Other Enterprise</u> <u>(58)</u>	<u>TOTAL</u>	<u>Internal Service(60)</u>
Cash Flows From Operating Activities					
0011 Cash Receipts From Users	3,011,511			3,011,511	
0012 Cash Receipts From Assessments Made to Other Funds					
0013 Cash Receipts From Earnings on Investments					
0014 Cash Receipts From Other Operating Revenue					
0015 Cash Payments To Employees For Services	2,766,035			2,766,035	
0016 Cash Payments For Insurance Claims					
0017 Cash Payments To Suppliers For Goods and Services	2,155,094			2,155,094	
0018 Cash Payments For Other Operating Expenses					
Net Cash Provided By (Used For) Operating Activities	(\$1,909,618)			(\$1,909,618)	
Cash Flows From Non-Capital Financing Activities					
0021 Receipts From Local Sources - 6000					
0022 Receipts From State Sources - 7000	722,338			722,338	
0023 Receipts From Federal Sources -8000	929,482			929,482	
0024 Notes and Loans Received (Repaid)					
0025 Interest Paid on Notes/Loans - 5100-830					
0026 Operating Transfers In (Out)/Residual Equity Trans					
0027 Operating Transfers In (Out) Primary Government / Comp Unit					
0028 Receipts From Refund of Prior Year Expenditures - 6991					
0029 Special and Extraordinary Gains (losses)					
0030 Receipts from Insurance Recoveries -9990					
Net Cash Prov By (Used for) Non-Capital Financing Activities	\$1,651,820			\$1,651,820	
Cash Flows From Capital and Related Financing Activities					
0031 Payments For Fac Acq, Const, and Imp - 4000	(115,431)			(115,431)	
0032 Proceeds from Disposal of Capital Assets					
0033 Proceeds From Extended Term Financing - 9200					
0034 Principal Paid on Financing Agreements					
0035 Interest Paid on Financing Agreements - 5100-830					
0036 (Inc) Dec in Contributed Capital					
Net Cash Prov By (Used for) Capital and Related Financing Activities	(\$115,431)			(\$115,431)	
Cash Flows From Investing Activities					
0041 Earnings on Investments - 6500	160,030			160,030	
0042 Purchase of Inv Securities / Deposits to Inv Pools					
0043 Receipts From Investment Pool Withdrawals					
0044 Proceeds from Sale and Maturity of Inv Securities					

LEA : 123464502 Lower Merion SD

Printed 3/11/2026 9:14:25 AM

REVISED SUBMISSION

Page - 2 of 4

0045 Loans Received (Paid)

Net Cash Prov By (Used for) Investing Activities	\$160,030	\$160,030
---	------------------	------------------

LEA : 123464502 Lower Merion SD

Printed 3/11/2026 9:14:25 AM

REVISED SUBMISSION

	<u>Food Service</u> <u>(51)</u>	<u>Child Care Operations</u> <u>(52)</u>	<u>Other Enterprise</u> <u>(58)</u>	<u>TOTAL</u>	<u>Internal Service</u> <u>(60)</u>
Net Increase (Decrease) in Cash Flows	(213,199)			(213,199)	
0004 Cash and Cash Equivalents Beginning of Year	3,414,576			3,414,576	
Cash and Cash Equivalents at Year End	\$3,201,377			\$3,201,377	
<hr/>					
Reconciliation of Operating Income (Loss) To Net Cash Provided by (Used For) Operating Activities					
0005 Operating Income (Loss) per REP	(2,559,316)			(2,559,316)	
Adjustments					
0051 Depreciation and Net Amortization	32,659			32,659	
0052 Provision for Uncollectible Accounts					
0053 Other Adjustments	328,129			328,129	
Effect of Changes in Assets, Liabilities, Deferred Outflows and Deferred Inflows					
0054 (Inc) Dec In Accounts Receivable (0120-0150)	(29,982)			(29,982)	
0055 Advances to Other Funds					
0056 (Inc) Dec in Inventories (0170)	9,602			9,602	
0057 (Inc) Dec in Prepaid Expenses (0180)					
0058 (Inc) Dec in Other Current or Noncurrent Assets					
0064 Deferred Outflows (0910)	67,649			67,649	
0059 Inc (Dec) in Accounts Payable (0400-0450)	84,445			84,445	
0060 Inc (Dec) in Accrued Salaries/Benefits (0461)					
0065 Inc (Dec) in Net Pension Liabilities (0570)	192,734			192,734	
0066 Inc (Dec) in Other Postemp Benefit Oblig (0560)	13,900			13,900	
0061 Inc (Dec) in Payroll Deductions/Withholding (0462)					
0062 Inc (Dec) in Unearned Revenue (0480)	(52,759)			(52,759)	
0063 Inc (Dec) in Other Current or Noncurrent Liabilities					
0067 Deferred Inflows (0950)	3,321			3,321	
Total Adjustments	\$649,698			\$649,698	
Cash Provided By (Used for) Total	(\$1,909,618)			(\$1,909,618)	

COMBINED STATEMENT OF CASH FLOWS
SCHEDULE OF NONCASH INVESTING, CAPITAL, AND FINANCING ACTIVITIES

Explanation of Transaction and Balance Sheet Effect	Amount
Total	

LEA : 123464502 Lower Merion SD

Printed 3/11/2026 9:14:27 AM

REVISED SUBMISSION

Amounts Expressed in Whole Dollars	<u>Private Purpose Trust</u> <u>(71)</u>	<u>Investment Trust</u> <u>(72)</u>	<u>Pension Trust</u> <u>(73)</u>	<u>Student Activity Custodial</u> <u>(81)</u>
Assets And Deferred Outflows Of Resources				
Assets				
0100 Cash and Cash Equivalents	136,479		187,762	971,279
0110 Investments				
0130 Due From Other Funds				
0140 Due from Other Governments, Primary Government and Component Units				
0150 Other Receivables				10,703
0170 Inventories				
0180 Prepaid Expenses (Expenditures)				
0190 Other Current Assets				
0220 Buildings and Building Improvements (Net)				
0230 Tangible Property and Intangible Right-To-Use Assets (Net)				
Total Assets	\$136,479		\$187,762	\$981,982
0910 Deferred Outflows of Resources				
Total Assets And Deferred Outflows Of Resources	\$136,479		\$187,762	\$981,982

LEA : 123464502 Lower Merion SD

Printed 3/11/2026 9:14:27 AM

REVISED SUBMISSION

Amounts Expressed in Whole Dollars

<u>Other Custodial</u>	<u>Fiduciary Component Units</u>	<u>Total Fiduciary Funds</u>
(89)	(98)	

Assets And Deferred Outflows Of Resources

Assets		
0100 Cash and Cash Equivalents		1,295,520
0110 Investments		
0130 Due From Other Funds		
0140 Due from Other Governments, Primary Government and Component Units		
0150 Other Receivables		10,703
0170 Inventories		
0180 Prepaid Expenses (Expenditures)		
0190 Other Current Assets		
0220 Buildings and Building Improvements (Net)		
0230 Tangible Property and Intangible Right-To-Use Assets (Net)		
Total Assets		\$1,306,223
0910 Deferred Outflows of Resources		
Total Assets And Deferred Outflows Of Resources		\$1,306,223

LEA : 123464502 Lower Merion SD

Printed 3/11/2026 9:14:27 AM

REVISED SUBMISSION

Amounts Expressed in Whole Dollars

Private Purpose Trust Investment Trust Pension Trust Student Activity Custodial
 (71) (72) (73) (81)

Liabilities, Deferred Inflows Of Resources And Net Position

Liabilities				
0400	Due to Other Funds			
0410	Due to Other Governments, Primary Government and Component Units			
0420	Accounts Payable			
0430	Contracts Payable			
0450	Short-Term Payables			
0460	Payroll Accruals and Withholdings			
0480	Unearned Revenues			
0490	Other Current Liabilities			114,619
Total Liabilities				\$114,619
0950	Deferred Inflows of Resources			
Net Position				
0791	Net Investment in Capital Assets			
0009	Restricted Net Position (0792 – 0798)	136,479	187,762	867,363
0799	Unrestricted Net Position			
Total Net Position				\$187,762
Total Liabilities, Deferred Inflows Of Resources And Net Position				\$981,982

LEA : 123464502 Lower Merion SD

Printed 3/11/2026 9:14:27 AM

REVISED SUBMISSION

Amounts Expressed in Whole Dollars

Other Custodial
(89)

Fiduciary Component Units
(98)

Total Fiduciary Funds

Liabilities, Deferred Inflows Of Resources And Net Position

Liabilities

0400 Due to Other Funds	
0410 Due to Other Governments, Primary Government and Component Units	
0420 Accounts Payable	
0430 Contracts Payable	
0450 Short-Term Payables	
0460 Payroll Accruals and Withholdings	
0480 Unearned Revenues	
0490 Other Current Liabilities	114,619

Total Liabilities **\$114,619**

0950 Deferred Inflows of Resources

Net Position

0791 Net Investment in Capital Assets	
0009 Restricted Net Position (0792 – 0798)	1,191,604
0799 Unrestricted Net Position	

Total Net Position **\$1,191,604**

Total Liabilities, Deferred Inflows Of Resources And Net Position **\$1,306,223**

Amounts Expressed in Whole Dollars	<u>Private Purpose Trust</u> <u>(71)</u>	<u>Investment Trust</u> <u>(72)</u>	<u>Pension Trust</u> <u>(73)</u>	<u>Student Activity</u> <u>Custodial</u> <u>(81)</u>	<u>Other Custodial</u> <u>(89)</u>	<u>Fiduciary Component</u> <u>Units</u> <u>(98)</u>
Additions						
0091 Gifts and Contributions				1,433,243		
0095 Net Investment Earnings	6,113		11,339	36,117		
0092 Other Additions						
Deductions						
0093 Scholarships Awarded	4,243					
0094 Other Deductions			95,577	1,306,737		
Change In Net Position	\$1,870		(\$84,238)	\$162,623		
0006 Net Position – Beginning of Fiscal Year	134,609		272,000	704,740		
0007 Net Position Held in Trust for Pension Benefits						
Net Position - End of Fiscal Year	\$136,479		\$187,762	\$867,363		

Amounts Expressed in Whole Dollars	<u>Total Fiduciary Funds</u>
Additions	
0091 Gifts and Contributions	1,433,243
0095 Net Investment Earnings	53,569
0092 Other Additions	
Deductions	
0093 Scholarships Awarded	4,243
0094 Other Deductions	1,402,314
Change in Net Position	\$80,255
0006 Net Position – Beginning of Fiscal Year	1,111,349
0007 Net Position Held in Trust for Pension Benefits	
Net Position - End of Fiscal Year	\$1,191,604

REVISED SUBMISSION

	<u>Revenue Reported In Current Year</u>	<u>Current Year Tax Accrual</u>	<u>Prior Year Tax Accrual</u>	<u>Taxes Collected In Current Year</u>
<u>Revenue from Local Sources</u>				
6111 Current Real Estate Taxes	254,987,725.16			254,987,725.16
6112 Interim Real Estate Taxes	396,590.83	(7,307.18)	(7,267.96)	396,630.05
6113 Public Utility Realty Taxes	237,938.72			237,938.72
6143 Current Act 511 Local Services Taxes	254,636.76	53,372.88	59,944.21	261,208.09
6153 Current Act 511 Real Estate Transfer Taxes	4,903,251.93	552,653.98	474,898.44	4,825,496.39
6411 Delinquent Real Estate Taxes	3,377,234.54	226,593.94	238,022.42	3,388,663.02
6500 Earnings on Investments	6,525,319.45			
6700 Revenues from LEA Activities	30,078.00			
6832 Federal IDEA Revenue Received as Pass Through	1,941,890.76			
6910 Rentals	176,983.14			
6920 Contributions and Donations from Private Sources	2,184.50			
6942 Summer School Tuition	292,437.26			
6944 Receipts from Other LEAs in Pennsylvania - Education	446.31			
6980 Revenue from Community Services Activities	58,280.00			
6991 Refunds of a Prior Year Expenditure	492,778.75			
6999 Other Revenues Not Specified Above	198.00			
TOTAL Revenue from Local Sources	\$273,677,974.11	\$825,313.62	\$765,597.11	\$264,097,661.43

REVISED SUBMISSION

Revenue Reported
In Current Year

Revenue from State Sources

7111 Basic Education Funding-Formula	6,114,686.80		
7140 Charter Schools	122,964.64		
7160 Tuition for Orphans Subsidy	187,785.83		
7271 Special Education funds for School-Aged Pupils	3,633,290.08		
7311 Pupil Transportation Subsidy	1,253,185.39		
7312 Nonpublic and Charter School Pupil Transportation Subsidy	395,780.00		
7320 Rental and Sinking Fund Payments / Building Reimbursement Subsidy	384,347.69		
7331 State Reimbursement for Health Services	248,376.67		
7332 Feminine Hygiene Product Funding	14,906.50		
7340 State Property Tax Reduction Allocation	5,476,411.62		
7361 School Safety and Security Grants	161,248.97		
7362 School Mental Health & Safety and Security Grants	158,474.50		
7531 Ready to Learn-Foundation	240,611.00		
7599 Other State Revenue Not Listed Elsewhere in the 7000 Series	100,000.00		
7810 State Share of Social Security and Medicare Taxes	5,715,363.31		
7820 State Share of Retirement Contributions	25,878,827.75		
TOTAL Revenue from State Sources	\$50,086,260.75		

REVISED SUBMISSION

	Revenue Reported In Current Year			
Revenue from Federal Sources				
8514 Title I - Improving the Academic Achievement of the Disadvantaged	366,051.00			
8515 Title II - Preparing, Training, and Recruiting High Quality Teachers and Principals	153,521.00			
8516 Title III - Language Instruction for English Learners and Immigrant Students	84,362.45			
8517 Title IV - 21st Century Schools	29,785.00			
8810 School-Based Access Medicaid Reimbursement Program (SBAP) Reimbursements (Access)	1,737,411.67			
8820 Medical Assistance Reimbursement for Administrative Claiming (Quarterly) Program	13,751.49			
TOTAL Revenue from Federal Sources	\$2,384,882.61			
TOTAL FROM ALL SOURCES	\$326,149,117.47	\$825,313.62	\$765,597.11	\$264,097,661.43

LEA : 123464502 Lower Merion SD

Printed 3/11/2026 9:14:32 AM

REVISED SUBMISSION

	<u>General Fund (10)</u>	<u>Student Sponsored Activity Fund (21)</u>	<u>Public Purpose Trust (27)</u>	<u>Other Compt Approved (28)</u>	<u>Athletic / Activity (29)</u>	<u>Capital Reserve (690, 1850) (31)</u>
6000 Revenue from Local Sources						
6111 Current Real Estate Taxes	254,987,725.16					
6112 Interim Real Estate Taxes	396,590.83					
6113 Public Utility Realty Taxes	237,938.72					
6143 Current Act 511 Local Services Taxes	254,636.76					
6153 Current Act 511 Real Estate Transfer Taxes	4,903,251.93					
6411 Delinquent Real Estate Taxes	3,377,234.54					
6500 Earnings on Investments	6,525,319.45					
6700 Revenues from LEA Activities	30,078.00					
6832 Federal IDEA Revenue Received as Pass Through	1,941,890.76					
6910 Rentals	176,983.14					
6920 Contributions and Donations from Private Sources	2,184.50					
6942 Summer School Tuition	292,437.26					
6944 Receipts from Other LEAs in Pennsylvania - Education	446.31					
6980 Revenue from Community Services Activities	58,280.00					
6991 Refunds of a Prior Year Expenditure	492,778.75					
6999 Other Revenues Not Specified Above	198.00					
6000 Total Revenue from Local Sources	\$273,677,974.11					
7000 Revenue from State Sources						
7111 Basic Education Funding-Formula	6,114,686.80					
7140 Charter Schools	122,964.64					
7160 Tuition for Orphans Subsidy	187,785.83					
7271 Special Education funds for School-Aged Pupils	3,633,290.08					
7311 Pupil Transportation Subsidy	1,253,185.39					
7312 Nonpublic and Charter School Pupil Transportation Subsidy	395,780.00					
7320 Rental and Sinking Fund Payments / Building Reimbursement Subsidy	384,347.69					
7331 State Reimbursement for Health Services	248,376.67					
7332 Feminine Hygiene Product Funding	14,906.50					
7340 State Property Tax Reduction Allocation	5,476,411.62					
7361 School Safety and Security Grants	161,248.97					
7362 School Mental Health & Safety and Security Grants	158,474.50					
7531 Ready to Learn-Foundation	240,611.00					
7599 Other State Revenue Not Listed Elsewhere in the 7000 Series	100,000.00					
7810 State Share of Social Security and Medicare Taxes	5,715,363.31					
7820 State Share of Retirement Contributions	25,878,827.75					
7000 Total Revenue from State Sources	\$50,086,260.75					

LEA : 123464502 Lower Merion SD

Printed 3/11/2026 9:14:32 AM

REVISED SUBMISSION

	<u>Capital Reserve</u> <u>(1431) (32)</u>	<u>Other Capital</u> <u>Projects Fund (39)</u>	<u>Debt Service (40)</u>	<u>Permanent (90)</u>	<u>Total</u>
6000 Revenue from Local Sources					
6111 Current Real Estate Taxes					254,987,725.16
6112 Interim Real Estate Taxes					396,590.83
6113 Public Utility Realty Taxes					237,938.72
6143 Current Act 511 Local Services Taxes					254,636.76
6153 Current Act 511 Real Estate Transfer Taxes					4,903,251.93
6411 Delinquent Real Estate Taxes					3,377,234.54
6500 Earnings on Investments	224,239.94	178,904.57	212,041.00		7,140,504.96
6700 Revenues from LEA Activities					30,078.00
6832 Federal IDEA Revenue Received as Pass Through					1,941,890.76
6910 Rentals					176,983.14
6920 Contributions and Donations from Private Sources					2,184.50
6942 Summer School Tuition					292,437.26
6944 Receipts from Other LEAs in Pennsylvania - Education					446.31
6980 Revenue from Community Services Activities					58,280.00
6991 Refunds of a Prior Year Expenditure					492,778.75
6999 Other Revenues Not Specified Above					198.00
6000 Total Revenue from Local Sources	\$224,239.94	\$178,904.57	\$212,041.00		\$274,293,159.62
7000 Revenue from State Sources					
7111 Basic Education Funding-Formula					6,114,686.80
7140 Charter Schools					122,964.64
7160 Tuition for Orphans Subsidy					187,785.83
7271 Special Education funds for School-Aged Pupils					3,633,290.08
7311 Pupil Transportation Subsidy					1,253,185.39
7312 Nonpublic and Charter School Pupil Transportation Subsidy					395,780.00
7320 Rental and Sinking Fund Payments / Building Reimbursement Subsidy					384,347.69
7331 State Reimbursement for Health Services					248,376.67
7332 Feminine Hygiene Product Funding					14,906.50
7340 State Property Tax Reduction Allocation					5,476,411.62
7361 School Safety and Security Grants					161,248.97
7362 School Mental Health & Safety and Security Grants					158,474.50
7531 Ready to Learn-Foundation					240,611.00
7599 Other State Revenue Not Listed Elsewhere in the 7000 Series					100,000.00
7810 State Share of Social Security and Medicare Taxes					5,715,363.31
7820 State Share of Retirement Contributions					25,878,827.75
7000 Total Revenue from State Sources					\$50,086,260.75

LEA : 123464502 Lower Merion SD

Printed 3/11/2026 9:14:32 AM

REVISED SUBMISSION

Page - 3 of 4

	<u>General Fund (10)</u>	<u>Student Sponsored Activity Fund (21)</u>	<u>Public Purpose Trust (27)</u>	<u>Other Compt Approved (28)</u>	<u>Athletic / Activity (29)</u>	<u>Capital Reserve (690.1850) (31)</u>
8000 Revenue from Federal Sources						
8514 Title I - Improving the Academic Achievement of the Disadvantaged	366,051.00					
8515 Title II - Preparing, Training, and Recruiting High Quality Teachers and Principals	153,521.00					
8516 Title III - Language Instruction for English Learners and Immigrant Students	84,362.45					
8517 Title IV - 21st Century Schools	29,785.00					
8810 School-Based Access Medicaid Reimbursement Program (SBAP) Reimbursements (Access)	1,737,411.67					
8820 Medical Assistance Reimbursement for Administrative Claiming (Quarterly) Program	13,751.49					
8000 Total Revenue from Federal Sources	\$2,384,882.61					
9000 Other Financing Sources						
9220 Leases and Other Right-to-Use Arrangements						
9310 General Fund Transfers						
9000 Total Other Financing Sources						
Total From All Sources	\$326,149,117.47					

LEA : 123464502 Lower Merion SD

Printed 3/11/2026 9:14:32 AM

REVISED SUBMISSION

	<u>Capital Reserve</u> <u>(1431) (32)</u>	<u>Other Capital</u> <u>Projects Fund (39)</u>	<u>Debt Service (40)</u>	<u>Permanent (90)</u>	<u>Total</u>
8000 Revenue from Federal Sources					
8514 Title I - Improving the Academic Achievement of the Disadvantaged					366,051.00
8515 Title II - Preparing, Training, and Recruiting High Quality Teachers and Principals					153,521.00
8516 Title III - Language Instruction for English Learners and Immigrant Students					84,362.45
8517 Title IV - 21st Century Schools					29,785.00
8810 School-Based Access Medicaid Reimbursement Program (SBAP) Reimbursements (Access)					1,737,411.67
8820 Medical Assistance Reimbursement for Administrative Claiming (Quarterly) Program					13,751.49
8000 Total Revenue from Federal Sources					\$2,384,882.61
9000 Other Financing Sources					
9220 Leases and Other Right-to-Use Arrangements		594,577.00			594,577.00
9310 General Fund Transfers	4,000,000.00				4,000,000.00
9000 Total Other Financing Sources	\$4,000,000.00	\$594,577.00			\$4,594,577.00
Total From All Sources	\$4,224,239.94	\$773,481.57	\$212,041.00		\$331,358,879.98

REVISED SUBMISSION

	<u>General Fund (10)</u>	<u>Student Sponsored Activity Fund (21)</u>	<u>Public Purpose Trust (27)</u>	<u>Other Compt Approved (28)</u>	<u>Athletic / Activity (29)</u>	<u>Capital Reserve (690. 1850) (31)</u>
Revenue from Local Sources	273,677,974.11					
Revenue from State Sources	50,086,260.75					
Revenue from Federal Sources	2,384,882.61					
Other Financing Sources						
Total From All Sources	\$326,149,117.47					

LEA : 123464502 Lower Merion SD

Printed 3/11/2026 9:14:34 AM

REVISED SUBMISSION

	<u>Capital Reserve (1431)</u> <u>(32)</u>	<u>Other Capital Projects</u> <u>Fund (39)</u>	<u>Debt Service (40)</u>	<u>Permanent (90)</u>	<u>Total</u>
Revenue from Local Sources	224,239.94	178,904.57	212,041.00		274,293,159.62
Revenue from State Sources					50,086,260.75
Revenue from Federal Sources					2,384,882.61
Other Financing Sources	4,000,000.00	594,577.00			4,594,577.00
Total From All Sources	\$4,224,239.94	\$773,481.57	\$212,041.00		\$331,358,879.98

General Fund (10)

1000 Instruction	Total
100 Personnel Services – Salaries	
110 Official / Administrative Salaries	45,000.00
120 Professional – Educational	93,286,366.66
130 Professional – Other	276.38
170 Operative and Laborer	(32.49)
190 Instructional Assistant	9,327,898.24
Total Personnel Services – Salaries	\$102,659,508.79
200 Personnel Services – Employee Benefits	
210 Group Insurance – Contracted Provider	451,036.00
220 Social Security Contributions	7,676,850.43
230 PSERS Retirement Contributions	34,976,323.20
250 Unemployment Compensation	19,276.00
260 Workers’ Compensation	368,429.00
270 Group Insurance – Self-Insurance	20,442,974.52
280 Other Post-Employment Benefits (OPEB)	270,475.00
Total Personnel Services – Employee Benefits	\$64,205,364.15
300 Purchased Professional and Technical Services	
322 Professional Educational Services – Ius	3,111,796.39
323 Professional Educational Services – Other Educational Agencies	28,129.73
329 Professional Educational Services – Other	666,029.62
330 Other Professional Services	1,694,067.88
Total Purchased Professional and Technical Services	\$5,500,023.62
400 Purchased Property Services	
430 Repairs and Maintenance Services	80,851.10
440 Rentals	2,643.38
Total Purchased Property Services	\$83,494.48
500 Other Purchased Services	
510 Student Transportation Services	109,876.71
530 Communications	1,582.05
561 Tuition To Other School Districts Within the State	34,693.56
562 Tuition To Pennsylvania Charter Schools	1,530,582.98
563 Tuition To Nonpublic Schools	3,638,261.40
564 Tuition To Career and Technology Centers	876,251.07
567 Tuition To Approved Private Schools (APS) and PA Chartered Schools for the Deaf and Blind	2,950,418.94
568 Tuition To Private Residential Rehabilitative Institutions (PRRI) [In-State] and Detention Centers	26,756.27
569 Tuition – Other	9,200.00
580 Travel	14,937.03
594 IU Payment By Withholding for Institutionalized Children’s Programs – Special Classes	1,564.24
Total Other Purchased Services	\$9,194,124.25
600 Supplies	
610 General Supplies	1,315,246.39
630 Food	3,079.35
640 Books and Periodicals	737,750.52
650 Supplies & Fees – Technology Related	4,096,322.64

General Fund (10)

1000 Instruction		<u>Total</u>
Total Supplies		\$6,152,398.90
800 Other Objects		
810 Dues and Fees		38,018.68
890 Miscellaneous Expenditures		48,303.62
Total Other Objects		\$86,322.30
Total 1000 Instruction		\$187,881,236.49

General Fund (10)

1100 Regular Programs – Elementary / Secondary

	<u>Elementary</u>	<u>Secondary</u>	<u>Federal</u>	<u>Total</u>
100 Personnel Services – Salaries				
120 Professional – Educational	34,084,761.92	38,219,050.00	298,275.20	72,602,087.12
Total Personnel Services – Salaries	\$34,084,761.92	\$38,219,050.00	\$298,275.20	\$72,602,087.12
200 Personnel Services – Employee Benefits				
210 Group Insurance – Contracted Provider	139,192.14	146,124.86		285,317.00
220 Social Security Contributions	2,558,212.59	2,859,774.61	11,246.01	5,429,233.21
230 PSERS Retirement Contributions	11,778,664.74	12,968,790.87	46,359.33	24,793,814.94
250 Unemployment Compensation	5,945.38	6,245.62		12,191.00
260 Workers' Compensation	113,704.82	119,344.18		233,049.00
270 Group Insurance – Self-Insurance	6,289,869.53	6,646,261.94		12,936,131.47
280 Other Post-Employment Benefits (OPEB)	121,450.00	145,475.00		266,925.00
Total Personnel Services – Employee Benefits	\$21,007,039.20	\$22,892,017.08	\$57,605.34	\$43,956,661.62
300 Purchased Professional and Technical Services				
329 Professional Educational Services – Other	221,014.89	291,035.67		512,050.56
330 Other Professional Services	8,520.37	411,198.55	239,445.02	659,163.94
Total Purchased Professional and Technical Services	\$229,535.26	\$702,234.22	\$239,445.02	\$1,171,214.50
400 Purchased Property Services				
430 Repairs and Maintenance Services	38,001.85	42,223.54		80,225.39
440 Rentals		2,643.38		2,643.38
Total Purchased Property Services	\$38,001.85	\$44,866.92		\$82,868.77
500 Other Purchased Services				
510 Student Transportation Services	7,242.11	98,873.00		106,115.11
530 Communications		1,582.05		1,582.05
562 Tuition To Pennsylvania Charter Schools	100,274.80	449,606.18		549,880.98
563 Tuition To Nonpublic Schools		26,650.00		26,650.00
580 Travel	392.58	1,857.66		2,250.24
Total Other Purchased Services	\$107,909.49	\$578,568.89		\$686,478.38
600 Supplies				
610 General Supplies	545,849.60	680,319.38	10,493.17	1,236,662.15
630 Food	1,203.35	1,876.00		3,079.35
640 Books and Periodicals	489,386.43	167,945.93	71,816.09	729,148.45
650 Supplies & Fees – Technology Related	1,639,816.08	2,114,437.83	558.00	3,754,811.91
Total Supplies	\$2,676,255.46	\$2,964,579.14	\$82,867.26	\$5,723,701.86
800 Other Objects				
810 Dues and Fees	2,501.36	23,392.64		25,894.00
890 Miscellaneous Expenditures	38,933.21	9,370.41		48,303.62
Total Other Objects	\$41,434.57	\$32,763.05		\$74,197.62
Total 1100 Regular Programs – Elementary / Secondary	\$58,184,937.75	\$65,434,079.30	\$678,192.82	\$124,297,209.87

General Fund (10)

1110 Regular Programs

	<u>Elementary</u>	<u>Secondary</u>	<u>Federal</u>	<u>Total</u>
100 Personnel Services – Salaries				
120 Professional – Educational	34,084,761.92	38,219,050.00	82,644.04	72,386,455.96
Total Personnel Services – Salaries	\$34,084,761.92	\$38,219,050.00	\$82,644.04	\$72,386,455.96
200 Personnel Services – Employee Benefits				
210 Group Insurance – Contracted Provider	139,192.14	146,124.86		285,317.00
220 Social Security Contributions	2,558,212.59	2,859,774.61	3,161.08	5,421,148.28
230 PSERS Retirement Contributions	11,778,664.74	12,968,790.87	12,251.09	24,759,706.70
250 Unemployment Compensation	5,945.38	6,245.62		12,191.00
260 Workers' Compensation	113,704.82	119,344.18		233,049.00
270 Group Insurance – Self-Insurance	6,289,869.53	6,646,261.94		12,936,131.47
280 Other Post-Employment Benefits (OPEB)	121,450.00	145,475.00		266,925.00
Total Personnel Services – Employee Benefits	\$21,007,039.20	\$22,892,017.08	\$15,412.17	\$43,914,468.45
300 Purchased Professional and Technical Services				
329 Professional Educational Services – Other	221,014.89	291,035.67		512,050.56
330 Other Professional Services	8,520.37	411,198.55	239,445.02	659,163.94
Total Purchased Professional and Technical Services	\$229,535.26	\$702,234.22	\$239,445.02	\$1,171,214.50
400 Purchased Property Services				
430 Repairs and Maintenance Services	38,001.85	42,223.54		80,225.39
440 Rentals		2,643.38		2,643.38
Total Purchased Property Services	\$38,001.85	\$44,866.92		\$82,868.77
500 Other Purchased Services				
510 Student Transportation Services	7,242.11	98,873.00		106,115.11
530 Communications		1,582.05		1,582.05
562 Tuition To Pennsylvania Charter Schools	100,274.80	449,606.18		549,880.98
563 Tuition To Nonpublic Schools		26,650.00		26,650.00
580 Travel	392.58	1,857.66		2,250.24
Total Other Purchased Services	\$107,909.49	\$578,568.89		\$686,478.38
600 Supplies				
610 General Supplies	545,849.60	680,319.38	9,582.65	1,235,751.63
630 Food	1,203.35	1,876.00		3,079.35
640 Books and Periodicals	489,386.43	167,945.93	71,816.09	729,148.45
650 Supplies & Fees – Technology Related	1,639,816.08	2,114,437.83	558.00	3,754,811.91
Total Supplies	\$2,676,255.46	\$2,964,579.14	\$81,956.74	\$5,722,791.34
800 Other Objects				
810 Dues and Fees	2,501.36	23,392.64		25,894.00
890 Miscellaneous Expenditures	38,933.21	9,370.41		48,303.62
Total Other Objects	\$41,434.57	\$32,763.05		\$74,197.62
Total 1110 Regular Programs	\$58,184,937.75	\$65,434,079.30	\$419,457.97	\$124,038,475.02

General Fund (10)

1190 Federally-Funded Regular Programs

Elementary

Secondary

Federal

Total

100 Personnel Services – Salaries

120 Professional – Educational

215,631.16

215,631.16

Total Personnel Services – Salaries

\$215,631.16

\$215,631.16

200 Personnel Services – Employee Benefits

220 Social Security Contributions

8,084.93

8,084.93

230 PSERS Retirement Contributions

34,108.24

34,108.24

Total Personnel Services – Employee Benefits

\$42,193.17

\$42,193.17

600 Supplies

610 General Supplies

910.52

910.52

Total Supplies

\$910.52

\$910.52

Total 1190 Federally-Funded Regular Programs

\$258,734.85

\$258,734.85

General Fund (10)

1200 Special Programs – Elementary / Secondary

	<u>Elementary</u>	<u>Secondary</u>	<u>Federal</u>	<u>Total</u>
100 Personnel Services – Salaries				
110 Official / Administrative Salaries	36,000.00			36,000.00
120 Professional – Educational	9,749,675.94	10,451,163.11		20,200,839.05
170 Operative and Laborer	(32.49)			(32.49)
190 Instructional Assistant	5,220,828.00	3,366,093.24	708,191.24	9,295,112.48
Total Personnel Services – Salaries	\$15,006,471.45	\$13,817,256.35	\$708,191.24	\$29,531,919.04
200 Personnel Services – Employee Benefits				
210 Group Insurance – Contracted Provider	90,623.03	75,095.97		165,719.00
220 Social Security Contributions	1,148,940.78	1,058,608.63		2,207,549.41
230 PSERS Retirement Contributions	5,204,195.93	4,802,061.75		10,006,257.68
250 Unemployment Compensation	3,877.09	3,207.91		7,085.00
260 Workers’ Compensation	74,028.17	61,351.83		135,380.00
270 Group Insurance – Self-Insurance	4,101,785.51	3,405,057.54		7,506,843.05
280 Other Post-Employment Benefits (OPEB)	325.00	3,225.00		3,550.00
Total Personnel Services – Employee Benefits	\$10,623,775.51	\$9,408,608.63		\$20,032,384.14
300 Purchased Professional and Technical Services				
322 Professional Educational Services – Ius	343,630.50	1,066,963.70	1,700,597.74	3,111,191.94
329 Professional Educational Services – Other	65,693.69	84,400.37		150,094.06
330 Other Professional Services	3,291.25	3,291.26	1,028,096.43	1,034,678.94
Total Purchased Professional and Technical Services	\$412,615.44	\$1,154,655.33	\$2,728,694.17	\$4,295,964.94
400 Purchased Property Services				
430 Repairs and Maintenance Services		625.71		625.71
Total Purchased Property Services		\$625.71		\$625.71
500 Other Purchased Services				
561 Tuition To Other School Districts Within the State	462.53	34,231.03		34,693.56
562 Tuition To Pennsylvania Charter Schools	173,885.25	806,816.75		980,702.00
563 Tuition To Nonpublic Schools	204,535.50	3,407,075.90		3,611,611.40
567 Tuition To Approved Private Schools (APS) and PA Chartered Schools for the Deaf and Blind	1,384,820.11	1,565,598.83		2,950,418.94
568 Tuition To Private Residential Rehabilitative Institutions (PRRI) [In-State] and Detention Centers		3,709.27		3,709.27
580 Travel		1,804.68		1,804.68
594 IU Payment By Withholding for Institutionalized Children’s Programs – Special Classes	1,564.24			1,564.24
Total Other Purchased Services	\$1,765,267.63	\$5,819,236.46		\$7,584,504.09
600 Supplies				
610 General Supplies	39,140.67	15,251.40		54,392.07
640 Books and Periodicals	1,569.67	1,600.21		3,169.88
650 Supplies & Fees – Technology Related	100,593.44	82,416.15		183,009.59
Total Supplies	\$141,303.78	\$99,267.76		\$240,571.54
Total 1200 Special Programs – Elementary / Secondary	\$27,949,433.81	\$30,299,650.24	\$3,436,885.41	\$61,685,969.46

General Fund (10)

1210 Life Skills Support

	<u>Elementary</u>	<u>Secondary</u>	<u>Federal</u>	<u>Total</u>
100 Personnel Services – Salaries				
120 Professional – Educational	273,017.49	217,780.61		490,798.10
190 Instructional Assistant	38,520.02	249,125.85	37,253.11	324,898.98
Total Personnel Services – Salaries	\$311,537.51	\$466,906.46	\$37,253.11	\$815,697.08
200 Personnel Services – Employee Benefits				
210 Group Insurance – Contracted Provider	2,276.35	2,765.65		5,042.00
220 Social Security Contributions	25,645.46	34,737.83		60,383.29
230 PSERS Retirement Contributions	117,696.99	158,151.41		275,848.40
250 Unemployment Compensation	98.04	117.96		216.00
260 Workers' Compensation	1,857.70	2,261.30		4,119.00
270 Group Insurance – Self-Insurance	99,265.28	123,152.28		222,417.56
Total Personnel Services – Employee Benefits	\$246,839.82	\$321,186.43		\$568,026.25
300 Purchased Professional and Technical Services				
322 Professional Educational Services – Ius	38,069.07	378,335.58	440,028.34	856,432.99
329 Professional Educational Services – Other	2,018.37	2,023.04		4,041.41
330 Other Professional Services	3,291.25	3,291.26		6,582.51
Total Purchased Professional and Technical Services	\$43,378.69	\$383,649.88	\$440,028.34	\$867,056.91
500 Other Purchased Services				
563 Tuition To Nonpublic Schools		37,650.00		37,650.00
567 Tuition To Approved Private Schools (APS) and PA Chartered Schools for the Deaf and Blind	158,472.50	518,059.98		676,532.48
580 Travel		1,804.68		1,804.68
Total Other Purchased Services	\$158,472.50	\$557,514.66		\$715,987.16
600 Supplies				
610 General Supplies	10,539.34	2,682.26		13,221.60
650 Supplies & Fees – Technology Related	18,278.25	11,572.41		29,850.66
Total Supplies	\$28,817.59	\$14,254.67		\$43,072.26
Total 1210 Life Skills Support	\$789,046.11	\$1,743,512.10	\$477,281.45	\$3,009,839.66

General Fund (10)

1220 Sensory Support

	<u>Elementary</u>	<u>Secondary</u>	<u>Federal</u>	<u>Total</u>
100 Personnel Services – Salaries				
120 Professional – Educational	1,575,944.84	629,911.49		2,205,856.33
Total Personnel Services – Salaries	\$1,575,944.84	\$629,911.49		\$2,205,856.33
200 Personnel Services – Employee Benefits				
210 Group Insurance – Contracted Provider	8,420.22	2,976.78		11,397.00
220 Social Security Contributions	116,370.77	47,335.67		163,706.44
230 PSERS Retirement Contributions	534,541.40	213,540.38		748,081.78
250 Unemployment Compensation	358.20	127.80		486.00
260 Workers' Compensation	6,877.36	2,430.64		9,308.00
270 Group Insurance – Self-Insurance	364,151.44	128,571.18		492,722.62
Total Personnel Services – Employee Benefits	\$1,030,719.39	\$394,982.45		\$1,425,701.84
300 Purchased Professional and Technical Services				
322 Professional Educational Services – Ius	73,542.12	33,326.20	547,574.33	654,442.65
330 Other Professional Services			8,783.82	8,783.82
Total Purchased Professional and Technical Services	\$73,542.12	\$33,326.20	\$556,358.15	\$663,226.47
400 Purchased Property Services				
430 Repairs and Maintenance Services		625.71		625.71
Total Purchased Property Services		\$625.71		\$625.71
500 Other Purchased Services				
563 Tuition To Nonpublic Schools	8,750.00	94,045.00		102,795.00
567 Tuition To Approved Private Schools (APS) and PA Chartered Schools for the Deaf and Blind		10,700.00		10,700.00
Total Other Purchased Services	\$8,750.00	\$104,745.00		\$113,495.00
600 Supplies				
610 General Supplies	549.98	1,062.62		1,612.60
650 Supplies & Fees – Technology Related	28,107.69	19,782.34		47,890.03
Total Supplies	\$28,657.67	\$20,844.96		\$49,502.63
Total 1220 Sensory Support	\$2,717,614.02	\$1,184,435.81	\$556,358.15	\$4,458,407.98

General Fund (10)

1230 Emotional Support

100 Personnel Services – Salaries

	<u>Elementary</u>	<u>Secondary</u>	<u>Federal</u>	<u>Total</u>
110 Official / Administrative Salaries	36,000.00			36,000.00
120 Professional – Educational	3,035,583.11	3,196,949.26		6,232,532.37
170 Operative and Laborer	(32.49)			(32.49)
190 Instructional Assistant	2,441,792.02	1,312,126.00	392,804.86	4,146,722.88
Total Personnel Services – Salaries	\$5,513,342.64	\$4,509,075.26	\$392,804.86	\$10,415,222.76

200 Personnel Services – Employee Benefits

210 Group Insurance – Contracted Provider	35,060.23	25,208.77		60,269.00
220 Social Security Contributions	426,012.77	353,198.33		779,211.10
230 PSERS Retirement Contributions	1,929,886.08	1,598,581.09		3,528,467.17
250 Unemployment Compensation	1,502.80	1,078.20		2,581.00
260 Workers’ Compensation	28,641.12	20,600.88		49,242.00
270 Group Insurance – Self-Insurance	1,602,911.18	1,141,244.46		2,744,155.64
Total Personnel Services – Employee Benefits	\$4,024,014.18	\$3,139,911.73		\$7,163,925.91

300 Purchased Professional and Technical Services

322 Professional Educational Services – Ius	196,697.92	554,221.39	540,560.36	1,291,479.67
329 Professional Educational Services – Other	22,669.26	21,021.43		43,690.69
Total Purchased Professional and Technical Services	\$219,367.18	\$575,242.82	\$540,560.36	\$1,335,170.36

500 Other Purchased Services

561 Tuition To Other School Districts Within the State	462.53	18,673.02		19,135.55
563 Tuition To Nonpublic Schools	158,560.50	2,227,989.84		2,386,550.34
567 Tuition To Approved Private Schools (APS) and PA Chartered Schools for the Deaf and Blind	293,436.29	670,965.10		964,401.39
568 Tuition To Private Residential Rehabilitative Institutions (PRRI) [In-State] and Detention Centers		3,709.27		3,709.27
Total Other Purchased Services	\$452,459.32	\$2,921,337.23		\$3,373,796.55

600 Supplies

610 General Supplies	1,293.22	427.16		1,720.38
640 Books and Periodicals	386.35	746.50		1,132.85
650 Supplies & Fees – Technology Related	27,312.76	34,422.56		61,735.32
Total Supplies	\$28,992.33	\$35,596.22		\$64,588.55

Total 1230 Emotional Support

\$10,238,175.65	\$11,181,163.26	\$933,365.22	\$22,352,704.13
------------------------	------------------------	---------------------	------------------------

General Fund (10)

1240 Academic Support

	<u>Elementary</u>	<u>Secondary</u>	<u>Federal</u>	<u>Total</u>
100 Personnel Services – Salaries				
120 Professional – Educational	4,865,088.06	6,406,521.75		11,271,609.81
190 Instructional Assistant	2,740,515.96	1,804,841.39	278,133.27	4,823,490.62
Total Personnel Services – Salaries	\$7,605,604.02	\$8,211,363.14	\$278,133.27	\$16,095,100.43
200 Personnel Services – Employee Benefits				
210 Group Insurance – Contracted Provider	44,866.23	44,144.77		89,011.00
220 Social Security Contributions	580,908.53	623,336.80		1,204,245.33
230 PSERS Retirement Contributions	2,622,057.07	2,831,788.87		5,453,845.94
250 Unemployment Compensation	1,918.05	1,883.95		3,802.00
260 Workers' Compensation	36,651.99	36,059.01		72,711.00
270 Group Insurance – Self-Insurance	2,035,457.61	2,012,089.62		4,047,547.23
280 Other Post-Employment Benefits (OPEB)	325.00	3,225.00		3,550.00
Total Personnel Services – Employee Benefits	\$5,322,184.48	\$5,552,528.02		\$10,874,712.50
300 Purchased Professional and Technical Services				
322 Professional Educational Services – Ius	22,062.79	58,209.61	94,456.45	174,728.85
329 Professional Educational Services – Other	41,006.06	61,355.90		102,361.96
Total Purchased Professional and Technical Services	\$63,068.85	\$119,565.51	\$94,456.45	\$277,090.81
500 Other Purchased Services				
561 Tuition To Other School Districts Within the State		15,558.01		15,558.01
562 Tuition To Pennsylvania Charter Schools	173,885.25	806,816.75		980,702.00
563 Tuition To Nonpublic Schools	35,200.00	1,047,391.06		1,082,591.06
567 Tuition To Approved Private Schools (APS) and PA Chartered Schools for the Deaf and Blind		71,078.25		71,078.25
Total Other Purchased Services	\$209,085.25	\$1,940,844.07		\$2,149,929.32
600 Supplies				
610 General Supplies	11,185.71	9,750.01		20,935.72
640 Books and Periodicals	1,183.32	853.71		2,037.03
650 Supplies & Fees – Technology Related	14,455.79	15,974.89		30,430.68
Total Supplies	\$26,824.82	\$26,578.61		\$53,403.43
Total 1240 Academic Support	\$13,226,767.42	\$15,850,879.35	\$372,589.72	\$29,450,236.49

General Fund (10)

1241 Learning Support – Public

	<u>Elementary</u>	<u>Secondary</u>	<u>Federal</u>	<u>Total</u>
100 Personnel Services – Salaries				
120 Professional – Educational	3,652,202.11	4,797,854.99		8,450,057.10
190 Instructional Assistant	2,740,515.96	1,804,841.39	278,133.27	4,823,490.62
Total Personnel Services – Salaries	\$6,392,718.07	\$6,602,696.38	\$278,133.27	\$13,273,547.72
200 Personnel Services – Employee Benefits				
210 Group Insurance – Contracted Provider	39,518.63	37,869.37		77,388.00
220 Social Security Contributions	491,148.86	501,421.60		992,570.46
230 PSERS Retirement Contributions	2,211,335.03	2,275,266.80		4,486,601.83
250 Unemployment Compensation	1,689.33	1,615.67		3,305.00
260 Workers' Compensation	32,283.32	30,932.68		63,216.00
270 Group Insurance – Self-Insurance	1,798,625.49	1,708,303.66		3,506,929.15
280 Other Post-Employment Benefits (OPEB)	325.00	3,225.00		3,550.00
Total Personnel Services – Employee Benefits	\$4,574,925.66	\$4,558,634.78		\$9,133,560.44
300 Purchased Professional and Technical Services				
322 Professional Educational Services – Ius	22,062.79	58,209.61	94,456.45	174,728.85
329 Professional Educational Services – Other	38,036.89	55,092.33		93,129.22
Total Purchased Professional and Technical Services	\$60,099.68	\$113,301.94	\$94,456.45	\$267,858.07
500 Other Purchased Services				
561 Tuition To Other School Districts Within the State		15,558.01		15,558.01
562 Tuition To Pennsylvania Charter Schools	173,885.25	806,816.75		980,702.00
563 Tuition To Nonpublic Schools	35,200.00	1,047,391.06		1,082,591.06
567 Tuition To Approved Private Schools (APS) and PA Chartered Schools for the Deaf and Blind		71,078.25		71,078.25
Total Other Purchased Services	\$209,085.25	\$1,940,844.07		\$2,149,929.32
600 Supplies				
610 General Supplies	9,041.75	9,251.67		18,293.42
640 Books and Periodicals	891.78	715.46		1,607.24
650 Supplies & Fees – Technology Related	10,780.79	15,974.89		26,755.68
Total Supplies	\$20,714.32	\$25,942.02		\$46,656.34
Total 1241 Learning Support – Public	\$11,257,542.98	\$13,241,419.19	\$372,589.72	\$24,871,551.89

LEA : 123464502 Lower Merion SD

Printed 3/11/2026 9:14:37 AM

REVISED SUBMISSION

General Fund (10)

1243 Gifted Support

	<u>Elementary</u>	<u>Secondary</u>	<u>Federal</u>	<u>Total</u>
100 Personnel Services – Salaries				
120 Professional – Educational	1,212,885.95	1,608,666.76		2,821,552.71
Total Personnel Services – Salaries	\$1,212,885.95	\$1,608,666.76		\$2,821,552.71
200 Personnel Services – Employee Benefits				
210 Group Insurance – Contracted Provider	5,347.60	6,275.40		11,623.00
220 Social Security Contributions	89,759.67	121,915.20		211,674.87
230 PSERS Retirement Contributions	410,722.04	556,522.07		967,244.11
250 Unemployment Compensation	228.72	268.28		497.00
260 Workers' Compensation	4,368.67	5,126.33		9,495.00
270 Group Insurance – Self-Insurance	236,832.12	303,785.96		540,618.08
Total Personnel Services – Employee Benefits	\$747,258.82	\$993,893.24		\$1,741,152.06
300 Purchased Professional and Technical Services				
329 Professional Educational Services – Other	2,969.17	6,263.57		9,232.74
Total Purchased Professional and Technical Services	\$2,969.17	\$6,263.57		\$9,232.74
600 Supplies				
610 General Supplies	2,143.96	498.34		2,642.30
640 Books and Periodicals	291.54	138.25		429.79
650 Supplies & Fees – Technology Related	3,675.00			3,675.00
Total Supplies	\$6,110.50	\$636.59		\$6,747.09
Total 1243 Gifted Support	\$1,969,224.44	\$2,609,460.16		\$4,578,684.60

LEA : 123464502 Lower Merion SD

Printed 3/11/2026 9:14:37 AM

REVISED SUBMISSION

General Fund (10)

1260 Physical Support

300 Purchased Professional and Technical Services

- 322 Professional Educational Services – Ius
- 330 Other Professional Services

	<u>Elementary</u>	<u>Secondary</u>	<u>Federal</u>	<u>Total</u>
Total Purchased Professional and Technical Services	\$4,364.65	\$1,691.47	\$239,210.58	\$245,266.70

600 Supplies

- 610 General Supplies
- 650 Supplies & Fees – Technology Related

Total Supplies	\$19,537.02	\$40.58		\$19,577.60
-----------------------	--------------------	----------------	--	--------------------

Total 1260 Physical Support	\$23,901.67	\$1,732.05	\$239,210.58	\$264,844.30
------------------------------------	--------------------	-------------------	---------------------	---------------------

LEA : 123464502 Lower Merion SD

Printed 3/11/2026 9:14:37 AM

REVISED SUBMISSION

General Fund (10)

1290 Special Programs - Other Support

300 Purchased Professional and Technical Services

	<u>Elementary</u>	<u>Secondary</u>	<u>Federal</u>	<u>Total</u>
322 Professional Educational Services – Ius	6,493.58	12,176.05	25,477.53	44,147.16
330 Other Professional Services			792,497.39	792,497.39
Total Purchased Professional and Technical Services	\$6,493.58	\$12,176.05	\$817,974.92	\$836,644.55

500 Other Purchased Services

567 Tuition To Approved Private Schools (APS) and PA Chartered Schools for the Deaf and Blind	735,065.62			735,065.62
594 IU Payment By Withholding for Institutionalized Children’s Programs – Special Classes	1,564.24			1,564.24
Total Other Purchased Services	\$736,629.86			\$736,629.86

600 Supplies

610 General Supplies	2,014.78	1,288.77		3,303.55
650 Supplies & Fees – Technology Related	6,459.57	663.95		7,123.52
Total Supplies	\$8,474.35	\$1,952.72		\$10,427.07

Total 1290 Special Programs - Other Support

	\$751,597.79	\$14,128.77	\$817,974.92	\$1,583,701.48
--	---------------------	--------------------	---------------------	-----------------------

LEA : 123464502 Lower Merion SD

Printed 3/11/2026 9:14:37 AM

REVISED SUBMISSION

General Fund (10)

1300 Vocational Education

Elementary

Secondary

Federal

Total

500 Other Purchased Services

564 Tuition To Career and Technology Centers

876,251.07

876,251.07

Total Other Purchased Services

\$876,251.07

\$876,251.07

Total 1300 Vocational Education

\$876,251.07

\$876,251.07

General Fund (10)

1400 Other Instructional Programs – Elementary / Secondary

	<u>Elementary</u>	<u>Secondary</u>	<u>Federal</u>	<u>Total</u>
100 Personnel Services – Salaries				
110 Official / Administrative Salaries		9,000.00		9,000.00
120 Professional – Educational	327,473.18	119,300.84	36,666.47	483,440.49
130 Professional – Other		276.38		276.38
190 Instructional Assistant	25,390.24	177.76	7,217.76	32,785.76
Total Personnel Services – Salaries	\$352,863.42	\$128,754.98	\$43,884.23	\$525,502.63
200 Personnel Services – Employee Benefits				
220 Social Security Contributions	27,146.15	9,840.50	3,081.16	40,067.81
230 PSERS Retirement Contributions	121,565.42	42,786.54	11,898.62	176,250.58
Total Personnel Services – Employee Benefits	\$148,711.57	\$52,627.04	\$14,979.78	\$216,318.39
300 Purchased Professional and Technical Services				
322 Professional Educational Services – lus		604.45		604.45
323 Professional Educational Services – Other Educational Agencies		28,129.73		28,129.73
329 Professional Educational Services – Other	3,885.00			3,885.00
Total Purchased Professional and Technical Services	\$3,885.00	\$28,734.18		\$32,619.18
500 Other Purchased Services				
510 Student Transportation Services		3,761.60		3,761.60
568 Tuition To Private Residential Rehabilitative Institutions (PRRI) [In-State] and Detention Centers		23,047.00		23,047.00
569 Tuition – Other		9,200.00		9,200.00
580 Travel		10,882.11		10,882.11
Total Other Purchased Services		\$46,890.71		\$46,890.71
600 Supplies				
610 General Supplies	12,945.12	9,913.79	906.28	23,765.19
640 Books and Periodicals	5,432.19			5,432.19
650 Supplies & Fees – Technology Related	859.14	157,642.00		158,501.14
Total Supplies	\$19,236.45	\$167,555.79	\$906.28	\$187,698.52
800 Other Objects				
810 Dues and Fees		12,124.68		12,124.68
Total Other Objects		\$12,124.68		\$12,124.68
Total 1400 Other Instructional Programs – Elementary / Secondary	\$524,696.44	\$436,687.38	\$59,770.29	\$1,021,154.11

LEA : 123464502 Lower Merion SD

Printed 3/11/2026 9:14:37 AM

REVISED SUBMISSION

General Fund (10)

1420 Summer School

	<u>Elementary</u>	<u>Secondary</u>	<u>Federal</u>	<u>Total</u>
100 Personnel Services – Salaries				
110 Official / Administrative Salaries		9,000.00		9,000.00
120 Professional – Educational	323,457.08	118,658.37	29,260.00	471,375.45
190 Instructional Assistant	25,390.24	177.76	7,217.76	32,785.76
Total Personnel Services – Salaries	\$348,847.32	\$127,836.13	\$36,477.76	\$513,161.21
200 Personnel Services – Employee Benefits				
220 Social Security Contributions	26,589.69	9,770.93	2,783.18	39,143.80
230 PSERS Retirement Contributions	119,245.61	42,688.32	10,564.03	172,497.96
Total Personnel Services – Employee Benefits	\$145,835.30	\$52,459.25	\$13,347.21	\$211,641.76
300 Purchased Professional and Technical Services				
323 Professional Educational Services – Other Educational Agencies		12,975.00		12,975.00
329 Professional Educational Services – Other	3,885.00			3,885.00
Total Purchased Professional and Technical Services	\$3,885.00	\$12,975.00		\$16,860.00
600 Supplies				
610 General Supplies	7,062.12	9,913.79	906.28	17,882.19
640 Books and Periodicals	5,432.19			5,432.19
650 Supplies & Fees – Technology Related	859.14	149,217.00		150,076.14
Total Supplies	\$13,353.45	\$159,130.79	\$906.28	\$173,390.52
Total 1420 Summer School	\$511,921.07	\$352,401.17	\$50,731.25	\$915,053.49

General Fund (10)

	<u>Elementary</u>	<u>Secondary</u>	<u>Federal</u>	<u>Total</u>
1430 Homebound Instruction				
100 Personnel Services – Salaries				
120 Professional – Educational	2,093.23	642.47		2,735.70
Total Personnel Services – Salaries	\$2,093.23	\$642.47		\$2,735.70
200 Personnel Services – Employee Benefits				
220 Social Security Contributions	151.62	49.14		200.76
230 PSERS Retirement Contributions	491.81	4.53		496.34
Total Personnel Services – Employee Benefits	\$643.43	\$53.67		\$697.10
600 Supplies				
650 Supplies & Fees – Technology Related		8,425.00		8,425.00
Total Supplies		\$8,425.00		\$8,425.00
Total 1430 Homebound Instruction	\$2,736.66	\$9,121.14		\$11,857.80

General Fund (10)

1440 Alternative Regular Education Programs

Elementary

Secondary

Federal

Total

300 Purchased Professional and Technical Services

322 Professional Educational Services – Ius

604.45

604.45

323 Professional Educational Services – Other Educational Agencies

15,154.73

15,154.73

Total Purchased Professional and Technical Services

\$15,759.18

\$15,759.18

500 Other Purchased Services

568 Tuition To Private Residential Rehabilitative Institutions (PRRI) [In-State] and Detention Centers

23,047.00

23,047.00

Total Other Purchased Services

\$23,047.00

\$23,047.00

Total 1440 Alternative Regular Education Programs

\$38,806.18

\$38,806.18

LEA : 123464502 Lower Merion SD

Printed 3/11/2026 9:14:37 AM

REVISED SUBMISSION

General Fund (10)

1441 Adjudicated / Court-Placed Programs

Elementary

Secondary

Federal

Total

500 Other Purchased Services

568 Tuition To Private Residential Rehabilitative Institutions (PRRI) [In-State] and Detention Centers

23,047.00

23,047.00

Total Other Purchased Services

\$23,047.00

\$23,047.00

Total 1441 Adjudicated / Court-Placed Programs

\$23,047.00

\$23,047.00

LEA : 123464502 Lower Merion SD

Printed 3/11/2026 9:14:37 AM

REVISED SUBMISSION

General Fund (10)

1442 Alternative Education Programs

300 Purchased Professional and Technical Services

322 Professional Educational Services – Ius

323 Professional Educational Services – Other Educational Agencies

Total Purchased Professional and Technical Services

Total 1442 Alternative Education Programs

Elementary

Secondary

Federal

Total

604.45

604.45

15,154.73

15,154.73

\$15,759.18

\$15,759.18

\$15,759.18

\$15,759.18

General Fund (10)

1450 Instructional Programs Outside the Established School Day

	<u>Elementary</u>	<u>Secondary</u>	<u>Federal</u>	<u>Total</u>
100 Personnel Services – Salaries				
120 Professional – Educational	1,922.87		7,406.47	9,329.34
130 Professional – Other		276.38		276.38
Total Personnel Services – Salaries	\$1,922.87	\$276.38	\$7,406.47	\$9,605.72
200 Personnel Services – Employee Benefits				
220 Social Security Contributions	404.84	20.43	297.98	723.25
230 PSERS Retirement Contributions	1,828.00	93.69	1,334.59	3,256.28
Total Personnel Services – Employee Benefits	\$2,232.84	\$114.12	\$1,632.57	\$3,979.53
500 Other Purchased Services				
510 Student Transportation Services		3,761.60		3,761.60
580 Travel		10,882.11		10,882.11
Total Other Purchased Services		\$14,643.71		\$14,643.71
600 Supplies				
610 General Supplies	5,883.00			5,883.00
Total Supplies	\$5,883.00			\$5,883.00
800 Other Objects				
810 Dues and Fees		12,124.68		12,124.68
Total Other Objects		\$12,124.68		\$12,124.68
Total 1450 Instructional Programs Outside the Established School Day	\$10,038.71	\$27,158.89	\$9,039.04	\$46,236.64

LEA : 123464502 Lower Merion SD

Printed 3/11/2026 9:14:37 AM

REVISED SUBMISSION

General Fund (10)

1490 Additional Other Instructional Programs

Elementary

Secondary

Federal

Total

500 Other Purchased Services

569 Tuition – Other

9,200.00

9,200.00

Total Other Purchased Services

\$9,200.00

\$9,200.00

Total 1490 Additional Other Instructional Programs

\$9,200.00

\$9,200.00

REVISED SUBMISSION

General Fund (10)

1500 Nonpublic School Programs

Elementary

Secondary

Federal

Total

300 Purchased Professional and Technical Services

330 Other Professional Services

225.00

225.00

Total Purchased Professional and Technical Services

\$225.00

\$225.00

600 Supplies

610 General Supplies

426.98

426.98

Total Supplies

\$426.98

\$426.98

Total 1500 Nonpublic School Programs

\$651.98

\$651.98

General Fund (10)

2000 Support Services

Total

100 Personnel Services – Salaries

100 Personnel Services – Salaries 46,555,943.75

Total Personnel Services – Salaries \$46,555,943.75

200 Personnel Services – Employee Benefits

210 Group Insurance – Contracted Provider 238,688.82

220 Social Security Contributions 3,515,757.74

230 PSERS Retirement Contributions 15,665,029.13

240 Tuition Reimbursement 336,102.85

250 Unemployment Compensation 10,314.06

260 Workers' Compensation 195,391.48

270 Group Insurance – Self-Insurance 10,847,657.60

280 Other Post-Employment Benefits (OPEB) 268,688.93

299 All Other Employee Benefits 53,704.40

Total Personnel Services – Employee Benefits \$31,131,335.01

300 Purchased Professional and Technical Services

322 Professional Educational Services – Ius 194,158.83

329 Professional Educational Services – Other 168,010.39

330 Other Professional Services 1,837,681.96

340 Technical Services 721,941.18

350 Security / Safety Services 648,863.20

360 Employee Training and Development Services 175,519.37

390 Other Purchased Professional and Technical Services 647.08

Total Purchased Professional and Technical Services \$3,746,822.01

400 Purchased Property Services

410 Cleaning Services 265,690.23

420 Utility Services 340,048.32

430 Repairs and Maintenance Services 1,889,206.91

440 Rentals 220,045.77

460 Extermination Services 13,648.00

Total Purchased Property Services \$2,728,639.23

500 Other Purchased Services

513 Contracted Carriers 4,877,187.03

520 Insurance – General 139,700.44

521 Fire Insurance 589,795.66

522 Automotive Liability Insurance 319,156.18

523 General Property and Liability Insurance 468,747.74

524 Other Pupil Transportation Insurance 46,537.36

529 Other Insurance 410,602.50

530 Communications 636,944.93

549 Other Advertising/Public Relations 25,578.06

550 Printing and Binding 36,890.85

580 Travel 23,906.52

595 IU Payments By Withholding 142,916.53

596 Direct Payments To Intermediate Units 9,547.34

LEA : 123464502 Lower Merion SD

Printed 3/11/2026 9:14:45 AM

REVISED SUBMISSION

General Fund (10)

2000 Support Services

Total

500 Other Purchased Services

599 Other Miscellaneous Purchased Services

53,558.39

Total Other Purchased Services

\$7,781,069.53

600 Supplies

610 General Supplies

2,461,847.52

620 Energy

2,536,471.13

630 Food

23,906.62

640 Books and Periodicals

138,322.04

650 Supplies & Fees – Technology Related

3,745,100.09

Total Supplies

\$8,905,647.40

700 Property

762 Capitalized Equipment - Replacement

243,063.00

766 Capitalized Technology Equipment – Replacement

62,978.54

Total Property

\$306,041.54

800 Other Objects

810 Dues and Fees

52,845.98

820 Claims and Judgments Against the LEA

1,208.10

890 Miscellaneous Expenditures

27,952.16

Total Other Objects

\$82,006.24

Total 2000 Support Services

\$101,237,504.71

LEA : 123464502 Lower Merion SD

Printed 3/11/2026 9:14:45 AM

REVISED SUBMISSION

General Fund (10)

2100 Support Services – Students

100 Personnel Services – Salaries

	<u>Elementary</u>	<u>Secondary</u>	<u>Federal</u>	<u>Total</u>
100 Personnel Services – Salaries	2,358,176.60	3,763,776.75		6,960,626.86
Total Personnel Services – Salaries	\$2,358,176.60	\$3,763,776.75		\$6,960,626.86

200 Personnel Services – Employee Benefits

210 Group Insurance – Contracted Provider	9,074.22	15,271.78		27,919.00
220 Social Security Contributions	175,995.62	280,302.76		520,224.12
230 PSERS Retirement Contributions	797,963.76	1,267,693.09		2,350,439.77
250 Unemployment Compensation	386.31	653.69		1,194.00
260 Workers' Compensation	7,414.90	12,477.10		22,812.00
270 Group Insurance – Self-Insurance	412,709.31	688,555.30		1,277,903.69
280 Other Post-Employment Benefits (OPEB)	33,411.92	38,460.92		71,872.84
Total Personnel Services – Employee Benefits	\$1,436,956.04	\$2,303,414.64		\$4,272,365.42

300 Purchased Professional and Technical Services

322 Professional Educational Services – Ius	41,882.28	92,095.65		133,977.93
329 Professional Educational Services – Other	70,219.69	70,847.31		141,067.00
330 Other Professional Services	4,433.00	8,459.00		18,964.19
390 Other Purchased Professional and Technical Services	323.54	323.54		647.08
Total Purchased Professional and Technical Services	\$116,858.51	\$171,725.50		\$294,656.20

400 Purchased Property Services

430 Repairs and Maintenance Services	77.50	578.70		656.20
440 Rentals		5,981.00		5,981.00
Total Purchased Property Services	\$77.50	\$6,559.70		\$6,637.20

500 Other Purchased Services

530 Communications	84.91	4,523.09		4,608.00
580 Travel	443.50	453.49		896.99
599 Other Miscellaneous Purchased Services	37,422.99	16,135.40		53,558.39
Total Other Purchased Services	\$37,951.40	\$21,111.98		\$59,063.38

600 Supplies

610 General Supplies	16,974.45	14,591.60		31,566.05
630 Food	839.00	202.50		1,041.50
640 Books and Periodicals	510.12	383.67		893.79
650 Supplies & Fees – Technology Related	59,581.20	33,934.65	2,500.00	105,010.85
Total Supplies	\$77,904.77	\$49,112.42	\$2,500.00	\$138,512.19

800 Other Objects

810 Dues and Fees	843.98	749.98		1,593.96
890 Miscellaneous Expenditures		22,952.16		22,952.16
Total Other Objects	\$843.98	\$23,702.14		\$24,546.12

Total 2100 Support Services – Students

	\$4,028,768.80	\$6,339,403.13	\$2,500.00	\$11,756,407.37
--	-----------------------	-----------------------	-------------------	------------------------

LEA : 123464502 Lower Merion SD

Printed 3/11/2026 9:14:45 AM

REVISED SUBMISSION

General Fund (10)

2110 Supervision of Student Services

	<u>Elementary</u>	<u>Secondary</u>	<u>Federal</u>	<u>Total</u>
100 Personnel Services – Salaries				
100 Personnel Services – Salaries	455,629.86	519,684.88		975,314.74
Total Personnel Services – Salaries	\$455,629.86	\$519,684.88		\$975,314.74
200 Personnel Services – Employee Benefits				
210 Group Insurance – Contracted Provider	1,625.00	2,011.00		3,636.00
220 Social Security Contributions	33,012.67	37,768.39		70,781.06
230 PSERS Retirement Contributions	153,000.27	174,703.54		327,703.81
250 Unemployment Compensation	69.00	87.00		156.00
260 Workers' Compensation	1,330.00	1,645.00		2,975.00
270 Group Insurance – Self-Insurance	72,890.06	89,690.05		162,580.11
280 Other Post-Employment Benefits (OPEB)	28,511.42	28,511.42		57,022.84
Total Personnel Services – Employee Benefits	\$290,438.42	\$334,416.40		\$624,854.82
300 Purchased Professional and Technical Services				
329 Professional Educational Services – Other	70,219.69	61,852.31		132,072.00
330 Other Professional Services	4,433.00	4,434.00		8,867.00
390 Other Purchased Professional and Technical Services	323.54	323.54		647.08
Total Purchased Professional and Technical Services	\$74,976.23	\$66,609.85		\$141,586.08
400 Purchased Property Services				
430 Repairs and Maintenance Services	77.50	578.70		656.20
Total Purchased Property Services	\$77.50	\$578.70		\$656.20
500 Other Purchased Services				
530 Communications	84.91	4,346.91		4,431.82
580 Travel	359.73	295.99		655.72
Total Other Purchased Services	\$444.64	\$4,642.90		\$5,087.54
600 Supplies				
610 General Supplies	2,746.64	1,817.13		4,563.77
630 Food	839.00	82.00		921.00
640 Books and Periodicals	510.12	383.67		893.79
650 Supplies & Fees – Technology Related	43,356.70	3,380.97	2,500.00	49,237.67
Total Supplies	\$47,452.46	\$5,663.77	\$2,500.00	\$55,616.23
800 Other Objects				
810 Dues and Fees	714.98	714.98		1,429.96
Total Other Objects	\$714.98	\$714.98		\$1,429.96
Total 2110 Supervision of Student Services	\$869,734.09	\$932,311.48	\$2,500.00	\$1,804,545.57

General Fund (10)

2111 Supervision of Student Services – Head of Component

	<u>Elementary</u>	<u>Secondary</u>	<u>Federal</u>	<u>Total</u>
100 Personnel Services – Salaries				
100 Personnel Services – Salaries	248,750.74	248,750.34		497,501.08
Total Personnel Services – Salaries	\$248,750.74	\$248,750.34		\$497,501.08
200 Personnel Services – Employee Benefits				
210 Group Insurance – Contracted Provider	635.00	635.00		1,270.00
220 Social Security Contributions	17,502.56	17,502.17		35,004.73
230 PSERS Retirement Contributions	84,131.66	84,131.58		168,263.24
250 Unemployment Compensation	28.00	28.00		56.00
260 Workers' Compensation	517.00	517.00		1,034.00
270 Group Insurance – Self-Insurance	29,105.38	29,105.38		58,210.76
Total Personnel Services – Employee Benefits	\$131,919.60	\$131,919.13		\$263,838.73
500 Other Purchased Services				
580 Travel	69.83	235.24		305.07
Total Other Purchased Services	\$69.83	\$235.24		\$305.07
600 Supplies				
610 General Supplies	181.17	181.26		362.43
640 Books and Periodicals	9.14	9.13		18.27
650 Supplies & Fees – Technology Related	19.98		2,500.00	2,519.98
Total Supplies	\$210.29	\$190.39	\$2,500.00	\$2,900.68
800 Other Objects				
810 Dues and Fees	645.00	645.00		1,290.00
Total Other Objects	\$645.00	\$645.00		\$1,290.00
Total 2111 Supervision of Student Services – Head of Component	\$381,595.46	\$381,740.10	\$2,500.00	\$765,835.56

General Fund (10)

2119 Supervision of Student Services – All Other Supervision

	<u>Elementary</u>	<u>Secondary</u>	<u>Federal</u>	<u>Total</u>
100 Personnel Services – Salaries				
100 Personnel Services – Salaries	206,879.12	270,934.54		477,813.66
Total Personnel Services – Salaries	\$206,879.12	\$270,934.54		\$477,813.66
200 Personnel Services – Employee Benefits				
210 Group Insurance – Contracted Provider	990.00	1,376.00		2,366.00
220 Social Security Contributions	15,510.11	20,266.22		35,776.33
230 PSERS Retirement Contributions	68,868.61	90,571.96		159,440.57
250 Unemployment Compensation	41.00	59.00		100.00
260 Workers' Compensation	813.00	1,128.00		1,941.00
270 Group Insurance – Self-Insurance	43,784.68	60,584.67		104,369.35
280 Other Post-Employment Benefits (OPEB)	28,511.42	28,511.42		57,022.84
Total Personnel Services – Employee Benefits	\$158,518.82	\$202,497.27		\$361,016.09
300 Purchased Professional and Technical Services				
329 Professional Educational Services – Other	70,219.69	61,852.31		132,072.00
330 Other Professional Services	4,433.00	4,434.00		8,867.00
390 Other Purchased Professional and Technical Services	323.54	323.54		647.08
Total Purchased Professional and Technical Services	\$74,976.23	\$66,609.85		\$141,586.08
400 Purchased Property Services				
430 Repairs and Maintenance Services	77.50	578.70		656.20
Total Purchased Property Services	\$77.50	\$578.70		\$656.20
500 Other Purchased Services				
530 Communications	84.91	4,346.91		4,431.82
580 Travel	289.90	60.75		350.65
Total Other Purchased Services	\$374.81	\$4,407.66		\$4,782.47
600 Supplies				
610 General Supplies	2,565.47	1,635.87		4,201.34
630 Food	839.00	82.00		921.00
640 Books and Periodicals	500.98	374.54		875.52
650 Supplies & Fees – Technology Related	43,336.72	3,380.97		46,717.69
Total Supplies	\$47,242.17	\$5,473.38		\$52,715.55
800 Other Objects				
810 Dues and Fees	69.98	69.98		139.96
Total Other Objects	\$69.98	\$69.98		\$139.96
Total 2119 Supervision of Student Services – All Other Supervision	\$488,138.63	\$550,571.38		\$1,038,710.01

General Fund (10)

2120 Guidance Services

100 Personnel Services – Salaries

	<u>Elementary</u>	<u>Secondary</u>	<u>Federal</u>	<u>Total</u>
100 Personnel Services – Salaries	1,357,341.26	2,190,620.37		3,547,961.63
Total Personnel Services – Salaries	\$1,357,341.26	\$2,190,620.37		\$3,547,961.63

200 Personnel Services – Employee Benefits

210 Group Insurance – Contracted Provider	5,227.22	8,746.78		13,974.00
220 Social Security Contributions	102,178.14	163,707.18		265,885.32
230 PSERS Retirement Contributions	460,138.81	735,858.52		1,195,997.33
250 Unemployment Compensation	223.31	373.69		597.00
260 Workers' Compensation	4,268.90	7,145.10		11,414.00
270 Group Insurance – Self-Insurance	240,514.05	397,265.09		637,779.14
Total Personnel Services – Employee Benefits	\$812,550.43	\$1,313,096.36		\$2,125,646.79

300 Purchased Professional and Technical Services

329 Professional Educational Services – Other		8,995.00		8,995.00
Total Purchased Professional and Technical Services		\$8,995.00		\$8,995.00

400 Purchased Property Services

440 Rentals		5,981.00		5,981.00
Total Purchased Property Services		\$5,981.00		\$5,981.00

500 Other Purchased Services

530 Communications		176.18		176.18
Total Other Purchased Services		\$176.18		\$176.18

600 Supplies

610 General Supplies	11,776.86	10,369.78		22,146.64
630 Food		120.50		120.50
650 Supplies & Fees – Technology Related	9,740.00	24,069.18		33,809.18
Total Supplies	\$21,516.86	\$34,559.46		\$56,076.32

800 Other Objects

810 Dues and Fees	129.00	35.00		164.00
890 Miscellaneous Expenditures		22,952.16		22,952.16
Total Other Objects	\$129.00	\$22,987.16		\$23,116.16

Total 2120 Guidance Services

	\$2,191,537.55	\$3,576,415.53		\$5,767,953.08
--	-----------------------	-----------------------	--	-----------------------

LEA : 123464502 Lower Merion SD

Printed 3/11/2026 9:14:45 AM

REVISED SUBMISSION

General Fund (10)

2130 Attendance Services

Elementary

Secondary

Federal

Total

100 Personnel Services – Salaries

100 Personnel Services – Salaries

838,673.51

Total Personnel Services – Salaries

\$838,673.51

200 Personnel Services – Employee Benefits

210 Group Insurance – Contracted Provider

3,573.00

220 Social Security Contributions

63,925.74

230 PSERS Retirement Contributions

284,782.92

250 Unemployment Compensation

154.00

260 Workers' Compensation

2,920.00

270 Group Insurance – Self-Insurance

176,639.08

Total Personnel Services – Employee Benefits

\$531,994.74

Total 2130 Attendance Services

\$1,370,668.25

General Fund (10)

2140 Psychological Services

	<u>Elementary</u>	<u>Secondary</u>	<u>Federal</u>	<u>Total</u>
100 Personnel Services – Salaries				
100 Personnel Services – Salaries	545,205.48	1,053,471.50		1,598,676.98
Total Personnel Services – Salaries	\$545,205.48	\$1,053,471.50		\$1,598,676.98
200 Personnel Services – Employee Benefits				
210 Group Insurance – Contracted Provider	2,222.00	4,514.00		6,736.00
220 Social Security Contributions	40,804.81	78,827.19		119,632.00
230 PSERS Retirement Contributions	184,824.68	357,131.03		541,955.71
250 Unemployment Compensation	94.00	193.00		287.00
260 Workers' Compensation	1,816.00	3,687.00		5,503.00
270 Group Insurance – Self-Insurance	99,305.20	201,600.16		300,905.36
280 Other Post-Employment Benefits (OPEB)	4,900.50	9,949.50		14,850.00
Total Personnel Services – Employee Benefits	\$333,967.19	\$655,901.88		\$989,869.07
300 Purchased Professional and Technical Services				
322 Professional Educational Services – Ius	41,882.28	92,095.65		133,977.93
330 Other Professional Services		4,025.00		4,025.00
Total Purchased Professional and Technical Services	\$41,882.28	\$96,120.65		\$138,002.93
500 Other Purchased Services				
580 Travel	83.77	157.50		241.27
599 Other Miscellaneous Purchased Services	37,422.99	16,135.40		53,558.39
Total Other Purchased Services	\$37,506.76	\$16,292.90		\$53,799.66
600 Supplies				
610 General Supplies	2,450.95	2,404.69		4,855.64
650 Supplies & Fees – Technology Related	6,484.50	6,484.50		12,969.00
Total Supplies	\$8,935.45	\$8,889.19		\$17,824.64
Total 2140 Psychological Services	\$967,497.16	\$1,830,676.12		\$2,798,173.28

LEA : 123464502 Lower Merion SD

Printed 3/11/2026 9:14:45 AM

REVISED SUBMISSION

General Fund (10)

2170 Student Accounting Services

Elementary

Secondary

Federal

Total

300 Purchased Professional and Technical Services

330 Other Professional Services

6,072.19

Total Purchased Professional and Technical Services

\$6,072.19

600 Supplies

650 Supplies & Fees – Technology Related

8,995.00

Total Supplies

\$8,995.00

Total 2170 Student Accounting Services

\$15,067.19

General Fund (10)

2200 Support Services – Instructional Staff

	<u>Elementary</u>	<u>Secondary</u>	<u>Federal</u>	<u>Total</u>
100 Personnel Services – Salaries				
100 Personnel Services – Salaries	2,865,488.52	1,889,464.44	2,074.28	4,757,027.24
Total Personnel Services – Salaries	\$2,865,488.52	\$1,889,464.44	\$2,074.28	\$4,757,027.24
200 Personnel Services – Employee Benefits				
210 Group Insurance – Contracted Provider	9,029.83	6,566.17		15,596.00
220 Social Security Contributions	218,184.34	142,753.78	79.11	361,017.23
230 PSERS Retirement Contributions	965,609.90	656,385.85	351.57	1,622,347.32
240 Tuition Reimbursement	147,295.07	155,268.78		302,563.85
250 Unemployment Compensation	386.22	281.78		668.00
260 Workers' Compensation	7,380.63	5,366.37		12,747.00
270 Group Insurance – Self-Insurance	432,609.86	308,837.87		741,447.73
Total Personnel Services – Employee Benefits	\$1,780,495.85	\$1,275,460.60	\$430.68	\$3,056,387.13
300 Purchased Professional and Technical Services				
322 Professional Educational Services – Ius	(375.00)	125.00	56,919.90	56,669.90
329 Professional Educational Services – Other	12,734.06	6,599.33		19,333.39
330 Other Professional Services	6,274.96	9,782.59	38,745.50	54,803.05
360 Employee Training and Development Services	22,993.26	58,393.35	8,050.81	89,437.42
Total Purchased Professional and Technical Services	\$41,627.28	\$74,900.27	\$103,716.21	\$220,243.76
400 Purchased Property Services				
430 Repairs and Maintenance Services		1,580.93		1,580.93
Total Purchased Property Services		\$1,580.93		\$1,580.93
500 Other Purchased Services				
530 Communications		1,098.69		1,098.69
550 Printing and Binding	23.53	45.47		69.00
580 Travel	264.70	186.31		451.01
Total Other Purchased Services	\$288.23	\$1,330.47		\$1,618.70
600 Supplies				
610 General Supplies	8,898.77	16,180.00		25,078.77
630 Food	5,280.60	3,168.66		8,449.26
640 Books and Periodicals	32,316.89	70,787.08	18,145.04	121,249.01
650 Supplies & Fees – Technology Related	158,986.83	352,284.99		511,271.82
Total Supplies	\$205,483.09	\$442,420.73	\$18,145.04	\$666,048.86
800 Other Objects				
810 Dues and Fees	10,854.90	14,695.94		25,550.84
Total Other Objects	\$10,854.90	\$14,695.94		\$25,550.84
Total 2200 Support Services – Instructional Staff	\$4,904,237.87	\$3,699,853.38	\$124,366.21	\$8,728,457.46

LEA : 123464502 Lower Merion SD

Printed 3/11/2026 9:14:45 AM

REVISED SUBMISSION

General Fund (10)

2220 Technology Support Services

600 Supplies

610 General Supplies

Total Supplies

Total 2220 Technology Support Services

Elementary

Secondary

Federal

Total

247.80

247.80

\$247.80

\$247.80

\$247.80

\$247.80

General Fund (10)

2250 School Library Services

	<u>Elementary</u>	<u>Secondary</u>	<u>Federal</u>	<u>Total</u>
100 Personnel Services – Salaries				
100 Personnel Services – Salaries	1,238,683.56	681,309.62		1,919,993.18
Total Personnel Services – Salaries	\$1,238,683.56	\$681,309.62		\$1,919,993.18
200 Personnel Services – Employee Benefits				
210 Group Insurance – Contracted Provider	5,478.58	3,315.42		8,794.00
220 Social Security Contributions	95,491.01	50,525.04		146,016.05
230 PSERS Retirement Contributions	419,397.63	252,852.80		672,250.43
250 Unemployment Compensation	234.17	142.83		377.00
260 Workers' Compensation	4,476.33	2,709.67		7,186.00
270 Group Insurance – Self-Insurance	273,214.05	155,542.63		428,756.68
Total Personnel Services – Employee Benefits	\$798,291.77	\$465,088.39		\$1,263,380.16
300 Purchased Professional and Technical Services				
329 Professional Educational Services – Other	10,384.06	6,455.01		16,839.07
Total Purchased Professional and Technical Services	\$10,384.06	\$6,455.01		\$16,839.07
600 Supplies				
610 General Supplies	5,548.69	13,059.33		18,608.02
630 Food		250.00		250.00
640 Books and Periodicals	30,776.51	66,967.61		97,744.12
650 Supplies & Fees – Technology Related	45,443.44	140,914.48		186,357.92
Total Supplies	\$81,768.64	\$221,191.42		\$302,960.06
800 Other Objects				
810 Dues and Fees		289.00		289.00
Total Other Objects		\$289.00		\$289.00
Total 2250 School Library Services	\$2,129,128.03	\$1,374,333.44		\$3,503,461.47

LEA : 123464502 Lower Merion SD

Printed 3/11/2026 9:14:45 AM

REVISED SUBMISSION

General Fund (10)

2260 Instruction and Curriculum Development Services

	<u>Elementary</u>	<u>Secondary</u>	<u>Federal</u>	<u>Total</u>
100 Personnel Services – Salaries				
100 Personnel Services – Salaries	1,184,241.02	1,058,478.06	1,687.35	2,244,406.43
Total Personnel Services – Salaries	\$1,184,241.02	\$1,058,478.06	\$1,687.35	\$2,244,406.43
200 Personnel Services – Employee Benefits				
210 Group Insurance – Contracted Provider	3,551.25	3,250.75		6,802.00
220 Social Security Contributions	88,835.68	80,162.17	64.54	169,062.39
230 PSERS Retirement Contributions	396,122.02	352,792.72	286.00	749,200.74
250 Unemployment Compensation	152.05	138.95		291.00
260 Workers' Compensation	2,904.30	2,656.70		5,561.00
270 Group Insurance – Self-Insurance	159,395.81	153,295.24		312,691.05
Total Personnel Services – Employee Benefits	\$650,961.11	\$592,296.53	\$350.54	\$1,243,608.18
300 Purchased Professional and Technical Services				
329 Professional Educational Services – Other		144.32		144.32
330 Other Professional Services	5,348.66	7,208.89		12,557.55
Total Purchased Professional and Technical Services	\$5,348.66	\$7,353.21		\$12,701.87
400 Purchased Property Services				
430 Repairs and Maintenance Services		1,580.93		1,580.93
Total Purchased Property Services		\$1,580.93		\$1,580.93
500 Other Purchased Services				
530 Communications		1,098.69		1,098.69
550 Printing and Binding	23.53	45.47		69.00
580 Travel	264.70	186.31		451.01
Total Other Purchased Services	\$288.23	\$1,330.47		\$1,618.70
600 Supplies				
610 General Supplies	3,039.08	3,005.67		6,044.75
630 Food	247.50	141.07		388.57
640 Books and Periodicals	956.04	2,079.68	16,000.97	19,036.69
650 Supplies & Fees – Technology Related	113,543.39	210,755.51		324,298.90
Total Supplies	\$117,786.01	\$215,981.93	\$16,000.97	\$349,768.91
800 Other Objects				
810 Dues and Fees	3,530.44	2,623.00		6,153.44
Total Other Objects	\$3,530.44	\$2,623.00		\$6,153.44
Total 2260 Instruction and Curriculum Development Services	\$1,962,155.47	\$1,879,644.13	\$18,038.86	\$3,859,838.46

General Fund (10)

2270 Instructional Staff Professional Development Services	<u>Elementary</u>	<u>Secondary</u>	<u>Federal</u>	<u>Total</u>
100 Personnel Services – Salaries				
100 Personnel Services – Salaries	108,695.03	96,830.95	386.93	205,912.91
Total Personnel Services – Salaries	\$108,695.03	\$96,830.95	\$386.93	\$205,912.91
200 Personnel Services – Employee Benefits				
220 Social Security Contributions	8,880.28	8,121.64	14.57	17,016.49
230 PSERS Retirement Contributions	36,908.67	32,825.63	65.57	69,799.87
240 Tuition Reimbursement	147,295.07	155,268.78		302,563.85
Total Personnel Services – Employee Benefits	\$193,084.02	\$196,216.05	\$80.14	\$389,380.21
300 Purchased Professional and Technical Services				
322 Professional Educational Services – lus	(375.00)	125.00		(250.00)
329 Professional Educational Services – Other	2,350.00			2,350.00
330 Other Professional Services	926.30	2,573.70	38,745.50	42,245.50
360 Employee Training and Development Services	22,993.26	58,393.35	8,050.81	89,437.42
Total Purchased Professional and Technical Services	\$25,894.56	\$61,092.05	\$46,796.31	\$133,782.92
600 Supplies				
610 General Supplies	63.20	115.00		178.20
630 Food	5,033.10	2,777.59		7,810.69
640 Books and Periodicals	584.34	1,739.79	988.83	3,312.96
650 Supplies & Fees – Technology Related		615.00		615.00
Total Supplies	\$5,680.64	\$5,247.38	\$988.83	\$11,916.85
800 Other Objects				
810 Dues and Fees	7,324.46	11,783.94		19,108.40
Total Other Objects	\$7,324.46	\$11,783.94		\$19,108.40
Total 2270 Instructional Staff Professional Development Services	\$340,678.71	\$371,170.37	\$48,252.21	\$760,101.29

General Fund (10)

2280 Nonpublic Support Services

Elementary

Secondary

Federal

Total

300 Purchased Professional and Technical Services

322 Professional Educational Services – lus

56,919.90

56,919.90

Total Purchased Professional and Technical Services

\$56,919.90

\$56,919.90

600 Supplies

640 Books and Periodicals

1,155.24

1,155.24

Total Supplies

\$1,155.24

\$1,155.24

Total 2280 Nonpublic Support Services

\$58,075.14

\$58,075.14

LEA : 123464502 Lower Merion SD

Printed 3/11/2026 9:14:45 AM

REVISED SUBMISSION

General Fund (10)

	<u>Elementary</u>	<u>Secondary</u>	<u>Federal</u>	<u>Total</u>
2290 Other Instructional Staff Services				
100 Personnel Services – Salaries				
100 Personnel Services – Salaries	333,868.91	52,845.81		386,714.72
Total Personnel Services – Salaries	\$333,868.91	\$52,845.81		\$386,714.72
200 Personnel Services – Employee Benefits				
220 Social Security Contributions	24,977.37	3,944.93		28,922.30
230 PSERS Retirement Contributions	113,181.58	17,914.70		131,096.28
Total Personnel Services – Employee Benefits	\$138,158.95	\$21,859.63		\$160,018.58
Total 2290 Other Instructional Staff Services	\$472,027.86	\$74,705.44		\$546,733.30

LEA : 123464502 Lower Merion SD

Printed 3/11/2026 9:14:45 AM

REVISED SUBMISSION

General Fund (10)

2300 Support Services – Administration

100 Personnel Services – Salaries

	<u>Elementary</u>	<u>Secondary</u>	<u>Federal</u>	<u>Total</u>
100 Personnel Services – Salaries	3,855,811.41	5,167,770.87		10,256,857.93
Total Personnel Services – Salaries	\$3,855,811.41	\$5,167,770.87		\$10,256,857.93

200 Personnel Services – Employee Benefits

210 Group Insurance – Contracted Provider	18,898.35	30,846.65		54,092.00
220 Social Security Contributions	290,308.04	389,233.14		770,139.21
230 PSERS Retirement Contributions	1,302,094.93	1,741,883.07		3,449,466.66
250 Unemployment Compensation	806.09	1,322.91		2,314.00
260 Workers' Compensation	15,438.22	25,200.78		44,191.00
270 Group Insurance – Self-Insurance	855,021.58	1,411,497.42		2,465,114.94
299 All Other Employee Benefits				12,930.00
Total Personnel Services – Employee Benefits	\$2,482,567.21	\$3,599,983.97		\$6,798,247.81

300 Purchased Professional and Technical Services

329 Professional Educational Services – Other	3,240.00	4,370.00		7,610.00
330 Other Professional Services	1,400.00	2,176.38		1,237,174.58
340 Technical Services				52,123.60
Total Purchased Professional and Technical Services	\$4,640.00	\$6,546.38		\$1,296,908.18

400 Purchased Property Services

430 Repairs and Maintenance Services	7,936.53	7,672.86		15,609.39
440 Rentals	1,051.05	111,622.67		113,173.72
Total Purchased Property Services	\$8,987.58	\$119,295.53		\$128,783.11

500 Other Purchased Services

520 Insurance – General				36,454.75
530 Communications	4,129.03	13,738.02		42,588.83
549 Other Advertising/Public Relations				4,791.18
550 Printing and Binding		4,645.61		35,124.85
580 Travel		599.50		5,587.76
Total Other Purchased Services	\$4,129.03	\$18,983.13		\$124,547.37

600 Supplies

610 General Supplies	7,644.83	73,290.66		84,277.86
630 Food		6,541.70		12,057.05
640 Books and Periodicals	2,192.41	7,287.29		9,499.67
650 Supplies & Fees – Technology Related	5,265.90	37,948.08		53,150.25
Total Supplies	\$15,103.14	\$125,067.73		\$158,984.83

800 Other Objects

810 Dues and Fees	3,284.58	2,423.65		6,668.23
820 Claims and Judgments Against the LEA				1,208.10

Total Other Objects	\$3,284.58	\$2,423.65		\$7,876.33
Total 2300 Support Services – Administration	\$6,374,522.95	\$9,040,071.26		\$18,772,205.56

LEA : 123464502 Lower Merion SD

Printed 3/11/2026 9:14:45 AM

REVISED SUBMISSION

General Fund (10)

2310 Board Services

Elementary

Secondary

Federal

Total

100 Personnel Services – Salaries

100 Personnel Services – Salaries

11,330.00

Total Personnel Services – Salaries

\$11,330.00

200 Personnel Services – Employee Benefits

220 Social Security Contributions

866.74

230 PSERS Retirement Contributions

3,840.88

Total Personnel Services – Employee Benefits

\$4,707.62

300 Purchased Professional and Technical Services

330 Other Professional Services

37,550.00

Total Purchased Professional and Technical Services

\$37,550.00

500 Other Purchased Services

520 Insurance – General

621.50

549 Other Advertising/Public Relations

4,791.18

Total Other Purchased Services

\$5,412.68

600 Supplies

630 Food

1,053.44

650 Supplies & Fees – Technology Related

9,000.00

Total Supplies

\$10,053.44

800 Other Objects

810 Dues and Fees

190.00

820 Claims and Judgments Against the LEA

1,208.10

Total Other Objects

\$1,398.10

Total 2310 Board Services

\$70,451.84

LEA : 123464502 Lower Merion SD

Printed 3/11/2026 9:14:45 AM

REVISED SUBMISSION

General Fund (10)

2320 Board Treasurer Services

Elementary

Secondary

Federal

Total

500 Other Purchased Services

520 Insurance – General

888.00

Total Other Purchased Services

\$888.00

Total 2320 Board Treasurer Services

\$888.00

General Fund (10)

2330 Tax Assessment and Collection Services

Elementary

Secondary

Federal

Total

100 Personnel Services – Salaries

100 Personnel Services – Salaries

23,746.00

Total Personnel Services – Salaries

\$23,746.00

200 Personnel Services – Employee Benefits

220 Social Security Contributions

1,816.38

Total Personnel Services – Employee Benefits

\$1,816.38

300 Purchased Professional and Technical Services

330 Other Professional Services

54,170.69

Total Purchased Professional and Technical Services

\$54,170.69

500 Other Purchased Services

520 Insurance – General

34,945.25

530 Communications

15,814.33

550 Printing and Binding

15,171.26

Total Other Purchased Services

\$65,930.84

Total 2330 Tax Assessment and Collection Services

\$145,663.91

LEA : 123464502 Lower Merion SD

Printed 3/11/2026 9:14:45 AM

REVISED SUBMISSION

General Fund (10)

2350 Legal and Accounting Services

Elementary

Secondary

Federal

Total

300 Purchased Professional and Technical Services

330 Other Professional Services

1,003,204.76

Total Purchased Professional and Technical Services

\$1,003,204.76

Total 2350 Legal and Accounting Services

\$1,003,204.76

General Fund (10)

2360 Office of the Superintendent / Executive Director Services

Elementary

Secondary

Federal

Total

100 Personnel Services – Salaries

100 Personnel Services – Salaries

615,286.95

Total Personnel Services – Salaries

\$615,286.95

200 Personnel Services – Employee Benefits

210 Group Insurance – Contracted Provider

2,010.00

220 Social Security Contributions

44,346.95

230 PSERS Retirement Contributions

204,040.43

250 Unemployment Compensation

86.00

260 Workers' Compensation

1,643.00

270 Group Insurance – Self-Insurance

94,529.60

299 All Other Employee Benefits

12,930.00

Total Personnel Services – Employee Benefits

\$359,585.98

300 Purchased Professional and Technical Services

330 Other Professional Services

129,234.00

Total Purchased Professional and Technical Services

\$129,234.00

500 Other Purchased Services

530 Communications

35.03

34.97

70.00

580 Travel

4,550.00

Total Other Purchased Services

\$35.03

\$34.97

\$4,620.00

600 Supplies

610 General Supplies

2,346.75

630 Food

4,461.91

650 Supplies & Fees – Technology Related

778.99

Total Supplies

\$7,587.65

800 Other Objects

810 Dues and Fees

300.00

Total Other Objects

\$300.00

Total 2360 Office of the Superintendent / Executive Director Services

\$35.03

\$34.97

\$1,116,614.58

LEA : 123464502 Lower Merion SD

Printed 3/11/2026 9:14:45 AM

REVISED SUBMISSION

General Fund (10)

2370 Community Relations Services

Elementary

Secondary

Federal

Total

100 Personnel Services – Salaries

100 Personnel Services – Salaries

298,155.70

Total Personnel Services – Salaries

\$298,155.70

200 Personnel Services – Employee Benefits

210 Group Insurance – Contracted Provider

1,132.00

220 Social Security Contributions

22,533.77

230 PSERS Retirement Contributions

101,074.74

250 Unemployment Compensation

48.00

260 Workers' Compensation

925.00

270 Group Insurance – Self-Insurance

49,414.00

Total Personnel Services – Employee Benefits

\$175,127.51

300 Purchased Professional and Technical Services

330 Other Professional Services

9,438.75

340 Technical Services

52,123.60

Total Purchased Professional and Technical Services

\$61,562.35

400 Purchased Property Services

440 Rentals

500.00

Total Purchased Property Services

\$500.00

500 Other Purchased Services

530 Communications

8,907.45

550 Printing and Binding

15,307.98

580 Travel

438.26

Total Other Purchased Services

\$24,653.69

600 Supplies

610 General Supplies

961.84

640 Books and Periodicals

19.97

650 Supplies & Fees – Technology Related

100.00

Total Supplies

\$1,081.81

800 Other Objects

810 Dues and Fees

470.00

Total Other Objects

\$470.00

Total 2370 Community Relations Services

\$561,551.06

General Fund (10)

2380 Office of the Principal Services

100 Personnel Services – Salaries

	<u>Elementary</u>	<u>Secondary</u>	<u>Federal</u>	<u>Total</u>
100 Personnel Services – Salaries	3,855,811.41	5,167,770.87		9,023,582.28

Total Personnel Services – Salaries	\$3,855,811.41	\$5,167,770.87		\$9,023,582.28
--	-----------------------	-----------------------	--	-----------------------

200 Personnel Services – Employee Benefits

210 Group Insurance – Contracted Provider	18,898.35	30,846.65		49,745.00
220 Social Security Contributions	290,308.04	389,233.14		679,541.18
230 PSERS Retirement Contributions	1,302,094.93	1,741,883.07		3,043,978.00
250 Unemployment Compensation	806.09	1,322.91		2,129.00
260 Workers' Compensation	15,438.22	25,200.78		40,639.00
270 Group Insurance – Self-Insurance	855,021.58	1,411,497.42		2,266,519.00

Total Personnel Services – Employee Benefits	\$2,482,567.21	\$3,599,983.97		\$6,082,551.18
---	-----------------------	-----------------------	--	-----------------------

300 Purchased Professional and Technical Services

329 Professional Educational Services – Other	3,240.00	4,370.00		7,610.00
330 Other Professional Services	1,400.00	2,176.38		3,576.38

Total Purchased Professional and Technical Services	\$4,640.00	\$6,546.38		\$11,186.38
--	-------------------	-------------------	--	--------------------

400 Purchased Property Services

430 Repairs and Maintenance Services	7,936.53	7,672.86		15,609.39
440 Rentals	1,051.05	111,622.67		112,673.72

Total Purchased Property Services	\$8,987.58	\$119,295.53		\$128,283.11
--	-------------------	---------------------	--	---------------------

500 Other Purchased Services

530 Communications	4,094.00	13,703.05		17,797.05
550 Printing and Binding		4,645.61		4,645.61
580 Travel		599.50		599.50

Total Other Purchased Services	\$4,094.00	\$18,948.16		\$23,042.16
---------------------------------------	-------------------	--------------------	--	--------------------

600 Supplies

610 General Supplies	7,644.83	73,290.66		80,935.49
630 Food		6,541.70		6,541.70
640 Books and Periodicals	2,192.41	7,287.29		9,479.70
650 Supplies & Fees – Technology Related	5,265.90	37,948.08		43,213.98

Total Supplies	\$15,103.14	\$125,067.73		\$140,170.87
-----------------------	--------------------	---------------------	--	---------------------

800 Other Objects

810 Dues and Fees	3,284.58	2,423.65		5,708.23
-------------------	----------	----------	--	----------

Total Other Objects	\$3,284.58	\$2,423.65		\$5,708.23
----------------------------	-------------------	-------------------	--	-------------------

Total 2380 Office of the Principal Services	\$6,374,487.92	\$9,040,036.29		\$15,414,524.21
--	-----------------------	-----------------------	--	------------------------

General Fund (10)

2390 Other Administration Services

Elementary

Secondary

Federal

Total

100 Personnel Services – Salaries

100 Personnel Services – Salaries

284,757.00

Total Personnel Services – Salaries

\$284,757.00

200 Personnel Services – Employee Benefits

210 Group Insurance – Contracted Provider

1,205.00

220 Social Security Contributions

21,034.19

230 PSERS Retirement Contributions

96,532.61

250 Unemployment Compensation

51.00

260 Workers' Compensation

984.00

270 Group Insurance – Self-Insurance

54,652.34

Total Personnel Services – Employee Benefits

\$174,459.14

600 Supplies

610 General Supplies

33.78

650 Supplies & Fees – Technology Related

57.28

Total Supplies

\$91.06

Total 2390 Other Administration Services

\$459,307.20

General Fund (10)

	<u>Elementary</u>	<u>Secondary</u>	<u>Federal</u>	<u>Total</u>
2400 Support Services – Pupil Health				
100 Personnel Services – Salaries				
100 Personnel Services – Salaries				2,465,505.80
Total Personnel Services – Salaries				\$2,465,505.80
200 Personnel Services – Employee Benefits				
210 Group Insurance – Contracted Provider				13,563.00
220 Social Security Contributions				184,137.32
230 PSERS Retirement Contributions				821,685.12
250 Unemployment Compensation				582.00
260 Workers' Compensation				11,079.00
270 Group Insurance – Self-Insurance				598,849.36
280 Other Post-Employment Benefits (OPEB)				47,300.00
Total Personnel Services – Employee Benefits				\$1,677,195.80
300 Purchased Professional and Technical Services				
322 Professional Educational Services – Ius			3,511.00	3,511.00
330 Other Professional Services				317,304.50
Total Purchased Professional and Technical Services			\$3,511.00	\$320,815.50
400 Purchased Property Services				
430 Repairs and Maintenance Services				1,713.75
Total Purchased Property Services				\$1,713.75
500 Other Purchased Services				
530 Communications				89.90
580 Travel				1,799.95
Total Other Purchased Services				\$1,889.85
600 Supplies				
610 General Supplies				44,158.24
650 Supplies & Fees – Technology Related				25,381.41
Total Supplies				\$69,539.65
Total 2400 Support Services – Pupil Health			\$3,511.00	\$4,536,660.35

LEA : 123464502 Lower Merion SD

Printed 3/11/2026 9:14:45 AM

REVISED SUBMISSION

General Fund (10)

2410 Supervision of Health Services

Elementary

Secondary

Federal

Total

100 Personnel Services – Salaries

100 Personnel Services – Salaries

105,526.73

Total Personnel Services – Salaries

\$105,526.73

200 Personnel Services – Employee Benefits

210 Group Insurance – Contracted Provider

605.00

220 Social Security Contributions

7,851.48

230 PSERS Retirement Contributions

35,773.56

250 Unemployment Compensation

26.00

260 Workers' Compensation

494.00

270 Group Insurance – Self-Insurance

26,408.00

280 Other Post-Employment Benefits (OPEB)

31,800.00

Total Personnel Services – Employee Benefits

\$102,958.04

Total 2410 Supervision of Health Services

\$208,484.77

LEA : 123464502 Lower Merion SD

Printed 3/11/2026 9:14:45 AM

REVISED SUBMISSION

General Fund (10)

2411 Supervision of Health Services – Head of Component

Elementary

Secondary

Federal

Total

100 Personnel Services – Salaries

100 Personnel Services – Salaries

105,526.73

Total Personnel Services – Salaries

\$105,526.73

200 Personnel Services – Employee Benefits

210 Group Insurance – Contracted Provider

605.00

220 Social Security Contributions

7,851.48

230 PSERS Retirement Contributions

35,773.56

250 Unemployment Compensation

26.00

260 Workers' Compensation

494.00

270 Group Insurance – Self-Insurance

26,408.00

280 Other Post-Employment Benefits (OPEB)

31,800.00

Total Personnel Services – Employee Benefits

\$102,958.04

Total 2411 Supervision of Health Services – Head of Component

\$208,484.77

LEA : 123464502 Lower Merion SD

Printed 3/11/2026 9:14:45 AM

REVISED SUBMISSION

General Fund (10)

2420 Medical Services

300 Purchased Professional and Technical Services

322 Professional Educational Services – Ius

330 Other Professional Services

Elementary

Secondary

Federal

Total

3,511.00

3,511.00

7,500.00

Total Purchased Professional and Technical Services

\$3,511.00

\$11,011.00

Total 2420 Medical Services

\$3,511.00

\$11,011.00

LEA : 123464502 Lower Merion SD

Printed 3/11/2026 9:14:45 AM

REVISED SUBMISSION

General Fund (10)

2430 Dental Services

Elementary

Secondary

Federal

Total

300 Purchased Professional and Technical Services

330 Other Professional Services

630.00

Total Purchased Professional and Technical Services

\$630.00

Total 2430 Dental Services

\$630.00

General Fund (10)

2440 Nursing Services

	<u>Elementary</u>	<u>Secondary</u>	<u>Federal</u>	<u>Total</u>
100 Personnel Services – Salaries				
100 Personnel Services – Salaries				2,198,236.99
Total Personnel Services – Salaries				\$2,198,236.99
200 Personnel Services – Employee Benefits				
210 Group Insurance – Contracted Provider				11,922.00
220 Social Security Contributions				164,332.41
230 PSERS Retirement Contributions				731,083.26
250 Unemployment Compensation				513.00
260 Workers' Compensation				9,738.00
270 Group Insurance – Self-Insurance				527,239.36
280 Other Post-Employment Benefits (OPEB)				11,340.00
Total Personnel Services – Employee Benefits				\$1,456,168.03
300 Purchased Professional and Technical Services				
330 Other Professional Services				309,174.50
Total Purchased Professional and Technical Services				\$309,174.50
400 Purchased Property Services				
430 Repairs and Maintenance Services				426.75
Total Purchased Property Services				\$426.75
500 Other Purchased Services				
530 Communications				89.90
580 Travel				1,799.95
Total Other Purchased Services				\$1,889.85
600 Supplies				
610 General Supplies				33,288.23
650 Supplies & Fees – Technology Related				25,381.41
Total Supplies				\$58,669.64
Total 2440 Nursing Services				\$4,024,565.76

LEA : 123464502 Lower Merion SD

Printed 3/11/2026 9:14:45 AM

REVISED SUBMISSION

General Fund (10)

2450 Nonpublic Health Services

Elementary

Secondary

Federal

Total

100 Personnel Services – Salaries

100 Personnel Services – Salaries

161,742.08

Total Personnel Services – Salaries

\$161,742.08

200 Personnel Services – Employee Benefits

210 Group Insurance – Contracted Provider

1,036.00

220 Social Security Contributions

11,953.43

230 PSERS Retirement Contributions

54,828.30

250 Unemployment Compensation

43.00

260 Workers' Compensation

847.00

270 Group Insurance – Self-Insurance

45,202.00

280 Other Post-Employment Benefits (OPEB)

4,160.00

Total Personnel Services – Employee Benefits

\$118,069.73

Total 2450 Nonpublic Health Services

\$279,811.81

LEA : 123464502 Lower Merion SD

Printed 3/11/2026 9:14:45 AM

REVISED SUBMISSION

General Fund (10)

2490 Other Health Services

Elementary

Secondary

Federal

Total

400 Purchased Property Services

430 Repairs and Maintenance Services

1,287.00

Total Purchased Property Services

\$1,287.00

600 Supplies

610 General Supplies

10,870.01

Total Supplies

\$10,870.01

Total 2490 Other Health Services

\$12,157.01

General Fund (10)

2510 Fiscal Services

Elementary Secondary Federal Total

100	<u>Personnel Services – Salaries</u>				
	100 Personnel Services – Salaries				833,742.05
Total Personnel Services – Salaries					\$833,742.05
200	<u>Personnel Services – Employee Benefits</u>				
	210 Group Insurance – Contracted Provider				3,827.00
	220 Social Security Contributions				59,119.36
	230 PSERS Retirement Contributions				282,636.76
	250 Unemployment Compensation				163.00
	260 Workers' Compensation				3,126.00
	270 Group Insurance – Self-Insurance				174,186.82
	299 All Other Employee Benefits				12,500.00
Total Personnel Services – Employee Benefits					\$535,558.94
300	<u>Purchased Professional and Technical Services</u>				
	330 Other Professional Services				10,800.00
	340 Technical Services				96,777.10
Total Purchased Professional and Technical Services					\$107,577.10
400	<u>Purchased Property Services</u>				
	430 Repairs and Maintenance Services				11,562.97
	440 Rentals				746.41
Total Purchased Property Services					\$12,309.38
500	<u>Other Purchased Services</u>				
	530 Communications				6,665.65
	580 Travel				187.14
Total Other Purchased Services					\$6,852.79
600	<u>Supplies</u>				
	610 General Supplies				4,450.47
	630 Food				220.00
	650 Supplies & Fees – Technology Related				1,780.49
Total Supplies					\$6,450.96
800	<u>Other Objects</u>				
	810 Dues and Fees				9,244.59
Total Other Objects					\$9,244.59
Total 2510 Fiscal Services					\$1,511,735.81

LEA : 123464502 Lower Merion SD

Printed 3/11/2026 9:14:45 AM

REVISED SUBMISSION

General Fund (10)

	<u>Elementary</u>	<u>Secondary</u>	<u>Federal</u>	<u>Total</u>
2511 Supervision of Fiscal Services - Head of Component				
100 Personnel Services – Salaries				
100 Personnel Services – Salaries				342,619.00
Total Personnel Services – Salaries				\$342,619.00
200 Personnel Services – Employee Benefits				
210 Group Insurance – Contracted Provider				1,079.00
220 Social Security Contributions				22,171.93
230 PSERS Retirement Contributions				116,147.74
250 Unemployment Compensation				46.00
260 Workers' Compensation				881.00
270 Group Insurance – Self-Insurance				48,540.02
299 All Other Employee Benefits				12,500.00
Total Personnel Services – Employee Benefits				\$201,365.69
500 Other Purchased Services				
580 Travel				187.14
Total Other Purchased Services				\$187.14
800 Other Objects				
810 Dues and Fees				1,035.00
Total Other Objects				\$1,035.00
Total 2511 Supervision of Fiscal Services - Head of Component				\$545,206.83

General Fund (10)

2513 Receiving and Disbursing Funds Services

Elementary

Secondary

Federal

Total

100 Personnel Services – Salaries

100 Personnel Services – Salaries

129,137.52

Total Personnel Services – Salaries

\$129,137.52

200 Personnel Services – Employee Benefits

210 Group Insurance – Contracted Provider

885.00

220 Social Security Contributions

9,762.49

230 PSERS Retirement Contributions

43,776.07

250 Unemployment Compensation

38.00

260 Workers' Compensation

724.00

270 Group Insurance – Self-Insurance

38,635.00

Total Personnel Services – Employee Benefits

\$93,820.56

Total 2513 Receiving and Disbursing Funds Services

\$222,958.08

General Fund (10)

2514 Payroll Services

100 Personnel Services – Salaries

100 Personnel Services – Salaries

Elementary

Secondary

Federal

Total

129,422.19

Total Personnel Services – Salaries

\$129,422.19

200 Personnel Services – Employee Benefits

210 Group Insurance – Contracted Provider

1,205.00

220 Social Security Contributions

9,315.67

230 PSERS Retirement Contributions

43,873.88

250 Unemployment Compensation

51.00

260 Workers' Compensation

984.00

270 Group Insurance – Self-Insurance

52,572.00

Total Personnel Services – Employee Benefits

\$108,001.55

Total 2514 Payroll Services

\$237,423.74

General Fund (10)

2515 Financial Accounting Services

Elementary

Secondary

Federal

Total

100 Personnel Services – Salaries

100 Personnel Services – Salaries

170,000.00

Total Personnel Services – Salaries

\$170,000.00

200 Personnel Services – Employee Benefits

210 Group Insurance – Contracted Provider

658.00

220 Social Security Contributions

12,885.85

230 PSERS Retirement Contributions

57,630.02

250 Unemployment Compensation

28.00

260 Workers' Compensation

537.00

270 Group Insurance – Self-Insurance

28,702.00

Total Personnel Services – Employee Benefits

\$100,440.87

Total 2515 Financial Accounting Services

\$270,440.87

General Fund (10)

2519 Other Fiscal Services

Elementary Secondary Federal Total

100	<u>Personnel Services – Salaries</u>			
	100 Personnel Services – Salaries			62,563.34
Total Personnel Services – Salaries				\$62,563.34
200	<u>Personnel Services – Employee Benefits</u>			
	220 Social Security Contributions			4,983.42
	230 PSERS Retirement Contributions			21,209.05
	270 Group Insurance – Self-Insurance			5,737.80
Total Personnel Services – Employee Benefits				\$31,930.27
300	<u>Purchased Professional and Technical Services</u>			
	330 Other Professional Services			10,800.00
	340 Technical Services			96,777.10
Total Purchased Professional and Technical Services				\$107,577.10
400	<u>Purchased Property Services</u>			
	430 Repairs and Maintenance Services			11,562.97
	440 Rentals			746.41
Total Purchased Property Services				\$12,309.38
500	<u>Other Purchased Services</u>			
	530 Communications			6,665.65
Total Other Purchased Services				\$6,665.65
600	<u>Supplies</u>			
	610 General Supplies			4,450.47
	630 Food			220.00
	650 Supplies & Fees – Technology Related			1,780.49
Total Supplies				\$6,450.96
800	<u>Other Objects</u>			
	810 Dues and Fees			8,209.59
Total Other Objects				\$8,209.59
Total 2519 Other Fiscal Services				\$235,706.29

LEA : 123464502 Lower Merion SD

Printed 3/11/2026 9:14:45 AM

REVISED SUBMISSION

General Fund (10)

2600 Operation and Maintenance of Plant Services

Elementary

Secondary

Federal

Total

100 Personnel Services – Salaries

100 Personnel Services – Salaries

8,950,610.36

Total Personnel Services – Salaries

\$8,950,610.36

200 Personnel Services – Employee Benefits

210 Group Insurance – Contracted Provider

48,946.00

220 Social Security Contributions

685,392.73

230 PSERS Retirement Contributions

3,065,180.45

250 Unemployment Compensation

2,090.00

260 Workers' Compensation

39,982.00

270 Group Insurance – Self-Insurance

2,162,800.03

280 Other Post-Employment Benefits (OPEB)

57,945.74

Total Personnel Services – Employee Benefits

\$6,062,336.95

300 Purchased Professional and Technical Services

330 Other Professional Services

116,593.01

350 Security / Safety Services

648,863.20

Total Purchased Professional and Technical Services

\$765,456.21

400 Purchased Property Services

410 Cleaning Services

265,690.23

420 Utility Services

340,048.32

430 Repairs and Maintenance Services

1,200,052.72

440 Rentals

92,338.10

460 Extermination Services

13,648.00

Total Purchased Property Services

\$1,911,777.37

500 Other Purchased Services

521 Fire Insurance

589,795.66

522 Automotive Liability Insurance

101,954.06

523 General Property and Liability Insurance

468,747.74

529 Other Insurance

410,602.50

530 Communications

407,112.47

580 Travel

298.66

Total Other Purchased Services

\$1,978,511.09

600 Supplies

610 General Supplies

914,057.46

767,772.50

1,681,829.96

620 Energy

2,129,204.87

650 Supplies & Fees – Technology Related

155,256.45

Total Supplies

\$914,057.46

\$767,772.50

\$3,966,291.28

700 Property

762 Capitalized Equipment - Replacement

243,063.00

Total Property

\$243,063.00

800 Other Objects

810 Dues and Fees

1,426.93

LEA : 123464502 Lower Merion SD

Printed 3/11/2026 9:14:45 AM

REVISED SUBMISSION

General Fund (10)

2600 Operation and Maintenance of Plant Services

Elementary

Secondary

Federal

Total

Total Other Objects

\$1,426.93

Total 2600 Operation and Maintenance of Plant Services

\$914,057.46

\$767,772.50

\$23,879,473.19

General Fund (10)

2610 Supervision of Operation and Maintenance of Plant Services

Elementary

Secondary

Federal

Total

100 Personnel Services – Salaries

100 Personnel Services – Salaries

1,109,849.21

Total Personnel Services – Salaries

\$1,109,849.21

200 Personnel Services – Employee Benefits

210 Group Insurance – Contracted Provider

5,814.00

220 Social Security Contributions

84,950.46

230 PSERS Retirement Contributions

368,691.07

250 Unemployment Compensation

249.00

260 Workers' Compensation

4,749.00

270 Group Insurance – Self-Insurance

257,420.83

280 Other Post-Employment Benefits (OPEB)

56,945.74

Total Personnel Services – Employee Benefits

\$778,820.10

400 Purchased Property Services

430 Repairs and Maintenance Services

426.33

Total Purchased Property Services

\$426.33

500 Other Purchased Services

530 Communications

154.80

580 Travel

146.73

Total Other Purchased Services

\$301.53

800 Other Objects

810 Dues and Fees

1,008.00

Total Other Objects

\$1,008.00

Total 2610 Supervision of Operation and Maintenance of Plant Services

\$1,890,405.17

General Fund (10)

2611 Supervision of Operation and Maintenance of Plant Services – Head of Component

Elementary

Secondary

Federal

Total

100 Personnel Services – Salaries

100 Personnel Services – Salaries

176,501.00

Total Personnel Services – Salaries

\$176,501.00

200 Personnel Services – Employee Benefits

210 Group Insurance – Contracted Provider

658.00

220 Social Security Contributions

13,134.67

230 PSERS Retirement Contributions

59,833.80

250 Unemployment Compensation

28.00

260 Workers' Compensation

537.00

270 Group Insurance – Self-Insurance

28,702.00

Total Personnel Services – Employee Benefits

\$102,893.47

400 Purchased Property Services

430 Repairs and Maintenance Services

269.62

Total Purchased Property Services

\$269.62

Total 2611 Supervision of Operation and Maintenance of Plant Services – Head of Component

\$279,664.09

General Fund (10)

2619 Supervision of Operation and Maintenance of Plant Services – All Other Supervision

Elementary

Secondary

Federal

Total

100 Personnel Services – Salaries

100 Personnel Services – Salaries

933,348.21

Total Personnel Services – Salaries

\$933,348.21

200 Personnel Services – Employee Benefits

210 Group Insurance – Contracted Provider

5,156.00

220 Social Security Contributions

71,815.79

230 PSERS Retirement Contributions

308,857.27

250 Unemployment Compensation

221.00

260 Workers' Compensation

4,212.00

270 Group Insurance – Self-Insurance

228,718.83

280 Other Post-Employment Benefits (OPEB)

56,945.74

Total Personnel Services – Employee Benefits

\$675,926.63

400 Purchased Property Services

430 Repairs and Maintenance Services

156.71

Total Purchased Property Services

\$156.71

500 Other Purchased Services

530 Communications

154.80

580 Travel

146.73

Total Other Purchased Services

\$301.53

800 Other Objects

810 Dues and Fees

1,008.00

Total Other Objects

\$1,008.00

Total 2619 Supervision of Operation and Maintenance of Plant Services – All Other Supervision

\$1,610,741.08

LEA : 123464502 Lower Merion SD

Printed 3/11/2026 9:14:45 AM

REVISED SUBMISSION

General Fund (10)

2620 Operation of Buildings Services

100 Personnel Services – Salaries

100 Personnel Services – Salaries				7,187,601.68
-----------------------------------	--	--	--	--------------

Total Personnel Services – Salaries				\$7,187,601.68
--	--	--	--	-----------------------

200 Personnel Services – Employee Benefits

210 Group Insurance – Contracted Provider				39,700.00
---	--	--	--	-----------

220 Social Security Contributions				551,658.27
-----------------------------------	--	--	--	------------

230 PSERS Retirement Contributions				2,477,494.28
------------------------------------	--	--	--	--------------

250 Unemployment Compensation				1,695.00
-------------------------------	--	--	--	----------

260 Workers' Compensation				32,430.00
---------------------------	--	--	--	-----------

270 Group Insurance – Self-Insurance				1,755,604.20
--------------------------------------	--	--	--	--------------

280 Other Post-Employment Benefits (OPEB)				1,000.00
---	--	--	--	----------

Total Personnel Services – Employee Benefits				\$4,859,581.75
---	--	--	--	-----------------------

300 Purchased Professional and Technical Services

330 Other Professional Services				99,342.01
---------------------------------	--	--	--	-----------

Total Purchased Professional and Technical Services				\$99,342.01
--	--	--	--	--------------------

400 Purchased Property Services

410 Cleaning Services				4,500.00
-----------------------	--	--	--	----------

420 Utility Services				340,048.32
----------------------	--	--	--	------------

430 Repairs and Maintenance Services				1,034,736.62
--------------------------------------	--	--	--	--------------

440 Rentals				12,632.72
-------------	--	--	--	-----------

460 Extermination Services				13,648.00
----------------------------	--	--	--	-----------

Total Purchased Property Services				\$1,405,565.66
--	--	--	--	-----------------------

500 Other Purchased Services

521 Fire Insurance				589,795.66
--------------------	--	--	--	------------

522 Automotive Liability Insurance				101,954.06
------------------------------------	--	--	--	------------

523 General Property and Liability Insurance				468,747.74
--	--	--	--	------------

529 Other Insurance				410,602.50
---------------------	--	--	--	------------

530 Communications				223,530.37
--------------------	--	--	--	------------

580 Travel				151.93
------------	--	--	--	--------

Total Other Purchased Services				\$1,794,782.26
---------------------------------------	--	--	--	-----------------------

600 Supplies

610 General Supplies	864,200.56	718,131.06		1,582,331.62
----------------------	------------	------------	--	--------------

620 Energy				2,129,204.87
------------	--	--	--	--------------

650 Supplies & Fees – Technology Related				26,541.07
--	--	--	--	-----------

Total Supplies	\$864,200.56	\$718,131.06		\$3,738,077.56
-----------------------	---------------------	---------------------	--	-----------------------

800 Other Objects

810 Dues and Fees				383.93
-------------------	--	--	--	--------

Total Other Objects				\$383.93
----------------------------	--	--	--	-----------------

Total 2620 Operation of Buildings Services	\$864,200.56	\$718,131.06		\$19,085,334.85
---	---------------------	---------------------	--	------------------------

LEA : 123464502 Lower Merion SD

Printed 3/11/2026 9:14:45 AM

REVISED SUBMISSION

General Fund (10)

	<u>Elementary</u>	<u>Secondary</u>	<u>Federal</u>	<u>Total</u>
2650 Vehicle Operation and Maintenance Services (Other Than Student Transportation Vehicles)				
400 <u>Purchased Property Services</u>				
430 Repairs and Maintenance Services				1,314.85
Total Purchased Property Services				\$1,314.85
600 <u>Supplies</u>				
610 General Supplies	242.87	241.21		484.08
Total Supplies	\$242.87	\$241.21		\$484.08
Total 2650 Vehicle Operation and Maintenance Services (Other Than Student Transportation Vehicles)	\$242.87	\$241.21		\$1,798.93

General Fund (10)

2660 Safety and Security Services

Elementary

Secondary

Federal

Total

300 Purchased Professional and Technical Services

350 Security / Safety Services

648,863.20

Total Purchased Professional and Technical Services

\$648,863.20

400 Purchased Property Services

410 Cleaning Services

2,820.00

430 Repairs and Maintenance Services

1,065.00

Total Purchased Property Services

\$3,885.00

600 Supplies

650 Supplies & Fees – Technology Related

120,642.92

Total Supplies

\$120,642.92

Total 2660 Safety and Security Services

\$773,391.12

General Fund (10)

	<u>Elementary</u>	<u>Secondary</u>	<u>Federal</u>	<u>Total</u>
2690 Other Operation and Maintenance of Plant Services				
300 <u>Purchased Professional and Technical Services</u>				
330 Other Professional Services				17,126.00
Total Purchased Professional and Technical Services				\$17,126.00
500 <u>Other Purchased Services</u>				
530 Communications				183,427.30
Total Other Purchased Services				\$183,427.30
600 <u>Supplies</u>				
650 Supplies & Fees – Technology Related				8,072.46
Total Supplies				\$8,072.46
700 <u>Property</u>				
762 Capitalized Equipment - Replacement				164,193.00
Total Property				\$164,193.00
800 <u>Other Objects</u>				
810 Dues and Fees				35.00
Total Other Objects				\$35.00
Total 2690 Other Operation and Maintenance of Plant Services				\$372,853.76

LEA : 123464502 Lower Merion SD

Printed 3/11/2026 9:14:45 AM

REVISED SUBMISSION

General Fund (10)

2700 Student Transportation Services

Elementary Secondary Federal Total

100 Personnel Services – Salaries

100 Personnel Services – Salaries 8,623,675.13

Total Personnel Services – Salaries \$8,623,675.13

200 Personnel Services – Employee Benefits

210 Group Insurance – Contracted Provider 60,735.82

220 Social Security Contributions 652,376.77

230 PSERS Retirement Contributions 2,887,260.64

250 Unemployment Compensation 2,703.06

260 Workers' Compensation 50,005.48

270 Group Insurance – Self-Insurance 2,766,895.06

280 Other Post-Employment Benefits (OPEB) 30,950.00

Total Personnel Services – Employee Benefits \$6,450,926.83

300 Purchased Professional and Technical Services

330 Other Professional Services 21,847.25

Total Purchased Professional and Technical Services \$21,847.25

400 Purchased Property Services

430 Repairs and Maintenance Services 320,101.12

440 Rentals 7,806.54

Total Purchased Property Services \$327,907.66

500 Other Purchased Services

513 Contracted Carriers 4,877,187.03

522 Automotive Liability Insurance 217,202.12

524 Other Pupil Transportation Insurance 46,537.36

530 Communications 256.39

550 Printing and Binding 1,697.00

580 Travel 8,273.94

Total Other Purchased Services \$5,151,153.84

600 Supplies

610 General Supplies 533,394.67

620 Energy 407,266.26

630 Food 2,004.26

640 Books and Periodicals 303.75

650 Supplies & Fees – Technology Related 54,487.79

Total Supplies \$997,456.73

800 Other Objects

810 Dues and Fees 1,217.00

Total Other Objects \$1,217.00

Total 2700 Student Transportation Services \$21,574,184.44

General Fund (10)

2719 Supervision of Student Transportation Services – All Other Supervision

Elementary

Secondary

Federal

Total

100 Personnel Services – Salaries

100 Personnel Services – Salaries 773,416.34

Total Personnel Services – Salaries \$773,416.34

200 Personnel Services – Employee Benefits

210 Group Insurance – Contracted Provider 5,081.00

220 Social Security Contributions 58,374.71

230 PSERS Retirement Contributions 261,642.80

250 Unemployment Compensation 217.00

260 Workers' Compensation 4,149.00

270 Group Insurance – Self-Insurance 227,615.64

Total Personnel Services – Employee Benefits \$557,080.15

400 Purchased Property Services

430 Repairs and Maintenance Services 64.69

Total Purchased Property Services \$64.69

500 Other Purchased Services

530 Communications 152.00

550 Printing and Binding 1,697.00

580 Travel 245.68

Total Other Purchased Services \$2,094.68

600 Supplies

610 General Supplies 11,012.35

630 Food 1,178.74

650 Supplies & Fees – Technology Related 38,137.79

Total Supplies \$50,328.88

800 Other Objects

810 Dues and Fees 1,102.00

Total Other Objects \$1,102.00

Total 2719 Supervision of Student Transportation Services – All Other Supervision \$1,384,086.74

General Fund (10)

2720 Vehicle Operation Services

Elementary

Secondary

Federal

Total

100 Personnel Services – Salaries

100 Personnel Services – Salaries

6,155,645.96

Total Personnel Services – Salaries

\$6,155,645.96

200 Personnel Services – Employee Benefits

210 Group Insurance – Contracted Provider

44,947.38

220 Social Security Contributions

466,569.00

230 PSERS Retirement Contributions

2,056,001.78

250 Unemployment Compensation

2,015.29

260 Workers' Compensation

37,061.60

270 Group Insurance – Self-Insurance

2,058,470.90

280 Other Post-Employment Benefits (OPEB)

27,153.47

Total Personnel Services – Employee Benefits

\$4,692,219.42

300 Purchased Professional and Technical Services

330 Other Professional Services

16,887.35

Total Purchased Professional and Technical Services

\$16,887.35

400 Purchased Property Services

430 Repairs and Maintenance Services

51,295.93

Total Purchased Property Services

\$51,295.93

500 Other Purchased Services

513 Contracted Carriers

4,278,918.76

522 Automotive Liability Insurance

190,558.68

524 Other Pupil Transportation Insurance

40,828.79

530 Communications

91.58

580 Travel

5,288.81

Total Other Purchased Services

\$4,515,686.62

600 Supplies

610 General Supplies

10,524.89

620 Energy

300,795.26

630 Food

724.26

650 Supplies & Fees – Technology Related

2,181.15

Total Supplies

\$314,225.56

Total 2720 Vehicle Operation Services

\$15,745,960.84

LEA : 123464502 Lower Merion SD

Printed 3/11/2026 9:14:45 AM

REVISED SUBMISSION

General Fund (10)

2730 Monitoring Services

Elementary

Secondary

Federal

Total

600 Supplies

650 Supplies & Fees – Technology Related

1,718.88

Total Supplies

\$1,718.88

Total 2730 Monitoring Services

\$1,718.88

General Fund (10)

2740 Vehicle Servicing and Maintenance Services

Elementary

Secondary

Federal

Total

100 Personnel Services – Salaries

100 Personnel Services – Salaries

609,877.45

Total Personnel Services – Salaries

\$609,877.45

200 Personnel Services – Employee Benefits

210 Group Insurance – Contracted Provider

3,218.00

220 Social Security Contributions

45,567.02

230 PSERS Retirement Contributions

206,712.69

250 Unemployment Compensation

138.00

260 Workers' Compensation

2,629.00

270 Group Insurance – Self-Insurance

140,426.00

Total Personnel Services – Employee Benefits

\$398,690.71

400 Purchased Property Services

430 Repairs and Maintenance Services

259,515.00

440 Rentals

7,806.54

Total Purchased Property Services

\$267,321.54

600 Supplies

610 General Supplies

510,139.76

620 Energy

64,414.51

650 Supplies & Fees – Technology Related

10,168.00

Total Supplies

\$584,722.27

Total 2740 Vehicle Servicing and Maintenance Services

\$1,860,611.97

General Fund (10)

2750 Nonpublic Transportation

Elementary

Secondary

Federal

Total

100 Personnel Services – Salaries

100 Personnel Services – Salaries

860,667.81

Total Personnel Services – Salaries

\$860,667.81

200 Personnel Services – Employee Benefits

210 Group Insurance – Contracted Provider

6,284.44

220 Social Security Contributions

65,234.57

230 PSERS Retirement Contributions

287,465.31

250 Unemployment Compensation

281.77

260 Workers' Compensation

5,181.88

270 Group Insurance – Self-Insurance

287,810.52

280 Other Post-Employment Benefits (OPEB)

3,796.53

Total Personnel Services – Employee Benefits

\$656,055.02

300 Purchased Professional and Technical Services

330 Other Professional Services

2,361.15

Total Purchased Professional and Technical Services

\$2,361.15

400 Purchased Property Services

430 Repairs and Maintenance Services

7,172.07

Total Purchased Property Services

\$7,172.07

500 Other Purchased Services

513 Contracted Carriers

598,268.27

522 Automotive Liability Insurance

26,643.44

524 Other Pupil Transportation Insurance

5,708.57

530 Communications

12.81

580 Travel

739.45

Total Other Purchased Services

\$631,372.54

600 Supplies

610 General Supplies

1,471.60

620 Energy

42,056.49

630 Food

101.26

650 Supplies & Fees – Technology Related

304.97

Total Supplies

\$43,934.32

Total 2750 Nonpublic Transportation

\$2,201,562.91

General Fund (10)

2790 Other Student Transportation Services

Elementary

Secondary

Federal

Total

100 Personnel Services – Salaries

100 Personnel Services – Salaries

5,436.24

Total Personnel Services – Salaries

\$5,436.24

200 Personnel Services – Employee Benefits

220 Social Security Contributions

415.88

230 PSERS Retirement Contributions

1,321.97

Total Personnel Services – Employee Benefits

\$1,737.85

Total 2790 Other Student Transportation Services

\$7,174.09

LEA : 123464502 Lower Merion SD

Printed 3/11/2026 9:14:45 AM

REVISED SUBMISSION

General Fund (10)

2800 Support Services – Central

Elementary

Secondary

Federal

Total

100 Personnel Services – Salaries

100 Personnel Services – Salaries 3,216,678.53

Total Personnel Services – Salaries

\$3,216,678.53

200 Personnel Services – Employee Benefits

210 Group Insurance – Contracted Provider 14,010.00

220 Social Security Contributions 245,823.45

230 PSERS Retirement Contributions 1,077,963.64

240 Tuition Reimbursement 33,539.00

250 Unemployment Compensation 600.00

260 Workers' Compensation 11,449.00

270 Group Insurance – Self-Insurance 660,459.97

280 Other Post-Employment Benefits (OPEB) 60,620.35

299 All Other Employee Benefits 28,274.40

Total Personnel Services – Employee Benefits

\$2,132,739.81

300 Purchased Professional and Technical Services

330 Other Professional Services 60,195.38

340 Technical Services 573,040.48

360 Employee Training and Development Services 86,081.95

Total Purchased Professional and Technical Services

\$719,317.81

400 Purchased Property Services

430 Repairs and Maintenance Services 337,929.83

Total Purchased Property Services

\$337,929.83

500 Other Purchased Services

520 Insurance – General 103,245.69

530 Communications 174,525.00

549 Other Advertising/Public Relations 20,786.88

580 Travel 6,411.07

Total Other Purchased Services

\$304,968.64

600 Supplies

610 General Supplies 57,091.50

630 Food 134.55

640 Books and Periodicals 6,375.82

650 Supplies & Fees – Technology Related 2,838,761.03

Total Supplies

\$2,902,362.90

700 Property

766 Capitalized Technology Equipment – Replacement 62,978.54

Total Property

\$62,978.54

800 Other Objects

810 Dues and Fees 7,144.43

890 Miscellaneous Expenditures 5,000.00

Total Other Objects

\$12,144.43

Total 2800 Support Services – Central

\$9,689,120.49

General Fund (10)

2810 Planning, Research, Development and Evaluation Services

Elementary

Secondary

Federal

Total

100 Personnel Services – Salaries

100 Personnel Services – Salaries 73,202.00

Total Personnel Services – Salaries

\$73,202.00

200 Personnel Services – Employee Benefits

210 Group Insurance – Contracted Provider 154.00

220 Social Security Contributions 6,433.80

230 PSERS Retirement Contributions 25,204.47

250 Unemployment Compensation 7.00

260 Workers' Compensation 126.00

270 Group Insurance – Self-Insurance 17,274.35

Total Personnel Services – Employee Benefits

\$49,199.62

600 Supplies

610 General Supplies 37,421.62

640 Books and Periodicals 6,350.60

650 Supplies & Fees – Technology Related 31,231.63

Total Supplies

\$75,003.85

800 Other Objects

890 Miscellaneous Expenditures 5,000.00

Total Other Objects

\$5,000.00

Total 2810 Planning, Research, Development and Evaluation Services

\$202,405.47

General Fund (10)

2830 Staff Services

Elementary Secondary Federal Total

100	<u>Personnel Services – Salaries</u>				
	100 Personnel Services – Salaries				660,709.02
Total Personnel Services – Salaries					\$660,709.02
200	<u>Personnel Services – Employee Benefits</u>				
	210 Group Insurance – Contracted Provider				2,290.00
	220 Social Security Contributions				53,318.67
	230 PSERS Retirement Contributions				219,455.88
	240 Tuition Reimbursement				33,539.00
	250 Unemployment Compensation				98.00
	260 Workers' Compensation				1,872.00
	270 Group Insurance – Self-Insurance				130,163.01
	299 All Other Employee Benefits				28,274.40
Total Personnel Services – Employee Benefits					\$469,010.96
300	<u>Purchased Professional and Technical Services</u>				
	330 Other Professional Services				60,195.38
	360 Employee Training and Development Services				86,081.95
Total Purchased Professional and Technical Services					\$146,277.33
400	<u>Purchased Property Services</u>				
	430 Repairs and Maintenance Services				27.49
Total Purchased Property Services					\$27.49
500	<u>Other Purchased Services</u>				
	530 Communications				3,974.00
	549 Other Advertising/Public Relations				20,786.88
	580 Travel				4,168.98
Total Other Purchased Services					\$28,929.86
600	<u>Supplies</u>				
	610 General Supplies				8,174.50
	630 Food				134.55
	650 Supplies & Fees – Technology Related				201,735.09
Total Supplies					\$210,044.14
800	<u>Other Objects</u>				
	810 Dues and Fees				6,731.50
Total Other Objects					\$6,731.50
Total 2830 Staff Services					\$1,521,730.30

General Fund (10)

2831 Supervision of Staff Services

Elementary

Secondary

Federal

Total

100 Personnel Services – Salaries

100 Personnel Services – Salaries

167,801.26

Total Personnel Services – Salaries

\$167,801.26

200 Personnel Services – Employee Benefits

210 Group Insurance – Contracted Provider

284.00

220 Social Security Contributions

12,539.90

230 PSERS Retirement Contributions

52,544.95

250 Unemployment Compensation

12.00

260 Workers' Compensation

232.00

270 Group Insurance – Self-Insurance

15,079.60

Total Personnel Services – Employee Benefits

\$80,692.45

Total 2831 Supervision of Staff Services

\$248,493.71

General Fund (10)

2832 Recruitment and Placement Services

Elementary

Secondary

Federal

Total

100 Personnel Services – Salaries

100 Personnel Services – Salaries

491,147.98

Total Personnel Services – Salaries

\$491,147.98

200 Personnel Services – Employee Benefits

210 Group Insurance – Contracted Provider

2,006.00

220 Social Security Contributions

39,768.39

230 PSERS Retirement Contributions

166,314.36

250 Unemployment Compensation

86.00

260 Workers' Compensation

1,640.00

270 Group Insurance – Self-Insurance

115,083.41

299 All Other Employee Benefits

28,274.40

Total Personnel Services – Employee Benefits

\$353,172.56

300 Purchased Professional and Technical Services

330 Other Professional Services

54,795.38

Total Purchased Professional and Technical Services

\$54,795.38

400 Purchased Property Services

430 Repairs and Maintenance Services

27.49

Total Purchased Property Services

\$27.49

500 Other Purchased Services

530 Communications

3,974.00

549 Other Advertising/Public Relations

20,786.88

580 Travel

75.11

Total Other Purchased Services

\$24,835.99

600 Supplies

610 General Supplies

8,174.50

630 Food

134.55

650 Supplies & Fees – Technology Related

201,435.09

Total Supplies

\$209,744.14

800 Other Objects

810 Dues and Fees

4,175.00

Total Other Objects

\$4,175.00

Total 2832 Recruitment and Placement Services

\$1,137,898.54

General Fund (10)

2834 Staff Development Services – Non-Instructional, Certified Staff Only

Elementary

Secondary

Federal

Total

200 Personnel Services – Employee Benefits

220 Social Security Contributions

878.42

240 Tuition Reimbursement

31,229.00

Total Personnel Services – Employee Benefits

\$32,107.42

300 Purchased Professional and Technical Services

330 Other Professional Services

5,400.00

360 Employee Training and Development Services

43,380.82

Total Purchased Professional and Technical Services

\$48,780.82

500 Other Purchased Services

580 Travel

455.37

Total Other Purchased Services

\$455.37

600 Supplies

650 Supplies & Fees – Technology Related

300.00

Total Supplies

\$300.00

800 Other Objects

810 Dues and Fees

2,402.00

Total Other Objects

\$2,402.00

Total 2834 Staff Development Services – Non-Instructional, Certified Staff Only

\$84,045.61

General Fund (10)

2836 Staff Development Services – Non-Instructional, Non-Certified Staff Only

Elementary

Secondary

Federal

Total

100 Personnel Services – Salaries

100 Personnel Services – Salaries

1,759.78

Total Personnel Services – Salaries

\$1,759.78

200 Personnel Services – Employee Benefits

220 Social Security Contributions

131.96

230 PSERS Retirement Contributions

596.57

240 Tuition Reimbursement

2,310.00

Total Personnel Services – Employee Benefits

\$3,038.53

300 Purchased Professional and Technical Services

360 Employee Training and Development Services

42,701.13

Total Purchased Professional and Technical Services

\$42,701.13

500 Other Purchased Services

580 Travel

3,638.50

Total Other Purchased Services

\$3,638.50

800 Other Objects

810 Dues and Fees

154.50

Total Other Objects

\$154.50

Total 2836 Staff Development Services – Non-Instructional, Non-Certified Staff Only

\$51,292.44

General Fund (10)

2900 Other Support Services

Elementary

Secondary

Federal

Total

100 Personnel Services – Salaries

100 Personnel Services – Salaries

491,219.85

Total Personnel Services – Salaries

\$491,219.85

200 Personnel Services – Employee Benefits

220 Social Security Contributions

37,527.55

230 PSERS Retirement Contributions

108,048.77

Total Personnel Services – Employee Benefits

\$145,576.32

500 Other Purchased Services

595 IU Payments By Withholding

142,916.53

596 Direct Payments To Intermediate Units

9,547.34

Total Other Purchased Services

\$152,463.87

Total 2900 Other Support Services

\$789,260.04

General Fund (10)

2910 Support Services Not Listed Elsewhere In the 2000 Series

Elementary

Secondary

Federal

Total

100 Personnel Services – Salaries

100 Personnel Services – Salaries

491,219.85

Total Personnel Services – Salaries

\$491,219.85

200 Personnel Services – Employee Benefits

220 Social Security Contributions

37,527.55

230 PSERS Retirement Contributions

108,048.77

Total Personnel Services – Employee Benefits

\$145,576.32

500 Other Purchased Services

595 IU Payments By Withholding

142,916.53

596 Direct Payments To Intermediate Units

9,547.34

Total Other Purchased Services

\$152,463.87

Total 2910 Support Services Not Listed Elsewhere In the 2000 Series

\$789,260.04

General Fund (10)

3000 Operation of Non-Instructional Services

Total

100 Personnel Services – Salaries

100 Personnel Services – Salaries	619.08
110 Official / Administrative Salaries	310,716.43
120 Professional – Educational	35,897.14
130 Professional – Other	2,919,687.90
150 Office / Clerical	130,587.47
180 Service Work	104,725.80

Total Personnel Services – Salaries \$3,502,233.82

200 Personnel Services – Employee Benefits

210 Group Insurance – Contracted Provider	1,383.00
220 Social Security Contributions	266,726.16
230 PSERS Retirement Contributions	1,182,495.81
250 Unemployment Compensation	59.00
260 Workers’ Compensation	1,131.00
270 Group Insurance – Self-Insurance	72,634.17

Total Personnel Services – Employee Benefits \$1,524,429.14

300 Purchased Professional and Technical Services

330 Other Professional Services	762,325.31
---------------------------------	------------

Total Purchased Professional and Technical Services \$762,325.31

400 Purchased Property Services

430 Repairs and Maintenance Services	18,876.18
440 Rentals	86,892.85

Total Purchased Property Services \$105,769.03

500 Other Purchased Services

510 Student Transportation Services	278,358.47
530 Communications	13.96
580 Travel	42,521.85

Total Other Purchased Services \$320,894.28

600 Supplies

610 General Supplies	263,685.30
630 Food	1,648.50
650 Supplies & Fees – Technology Related	38,388.40

Total Supplies \$303,722.20

800 Other Objects

810 Dues and Fees	60,723.38
-------------------	-----------

Total Other Objects \$60,723.38

Total 3000 Operation of Non-Instructional Services \$6,580,097.16

General Fund (10)

3200 Student Activities

Elementary

Secondary

Federal

Total

100 Personnel Services – Salaries

110 Official / Administrative Salaries				310,716.43
120 Professional – Educational				35,897.14
130 Professional – Other				2,919,687.90
150 Office / Clerical				130,587.47
180 Service Work				104,725.80

Total Personnel Services – Salaries				\$3,501,614.74
--	--	--	--	-----------------------

200 Personnel Services – Employee Benefits

210 Group Insurance – Contracted Provider				1,383.00
220 Social Security Contributions				266,680.29
230 PSERS Retirement Contributions				1,182,285.94
250 Unemployment Compensation				59.00
260 Workers' Compensation				1,131.00
270 Group Insurance – Self-Insurance				72,634.17

Total Personnel Services – Employee Benefits				\$1,524,173.40
---	--	--	--	-----------------------

300 Purchased Professional and Technical Services

330 Other Professional Services				500,474.33
---------------------------------	--	--	--	------------

Total Purchased Professional and Technical Services				\$500,474.33
--	--	--	--	---------------------

400 Purchased Property Services

430 Repairs and Maintenance Services				18,437.43
440 Rentals				86,892.85

Total Purchased Property Services				\$105,330.28
--	--	--	--	---------------------

500 Other Purchased Services

510 Student Transportation Services				278,358.47
530 Communications				13.96
580 Travel				42,521.85

Total Other Purchased Services				\$320,894.28
---------------------------------------	--	--	--	---------------------

600 Supplies

610 General Supplies				259,067.89
630 Food				1,648.50
650 Supplies & Fees – Technology Related				38,388.40

Total Supplies				\$299,104.79
-----------------------	--	--	--	---------------------

800 Other Objects

810 Dues and Fees				60,723.38
-------------------	--	--	--	-----------

Total Other Objects				\$60,723.38
----------------------------	--	--	--	--------------------

Total 3200 Student Activities				\$6,312,315.20
--------------------------------------	--	--	--	-----------------------

General Fund (10)

5000 Other Expenditures and Financing Uses

Total

800 Other Objects

830 Interest	5,515,396.29
880 Refunds of Prior Years' Receipts	95,647.40

Total Other Objects	\$5,611,043.69
----------------------------	-----------------------

900 Other Uses of Funds

910 Redemption of Principal	23,655,495.33
932 Capital Reserve Fund Transfers Applicable To Fund 32	4,000,000.00

Total Other Uses of Funds	\$27,655,495.33
----------------------------------	------------------------

Total 5000 Other Expenditures and Financing Uses	\$33,266,539.02
---	------------------------

REVISED SUBMISSION

General Fund (10)

5100 Debt Service / Other Expenditures and Financing Uses	<u>Elementary</u>	<u>Secondary</u>	<u>Federal</u>	<u>Total</u>
800 Other Objects				
830 Interest				5,515,396.29
880 Refunds of Prior Years' Receipts				95,647.40
Total Other Objects				\$5,611,043.69
900 Other Uses of Funds				
910 Redemption of Principal				23,655,495.33
Total Other Uses of Funds				\$23,655,495.33
Total 5100 Debt Service / Other Expenditures and Financing Uses				\$29,266,539.02

LEA : 123464502 Lower Merion SD

Printed 3/11/2026 9:15:16 AM

REVISED SUBMISSION

General Fund (10)

	<u>Elementary</u>	<u>Secondary</u>	<u>Federal</u>	<u>Total</u>
5110 Debt Service				
800 Other Objects				
830 Interest				5,507,135.00
Total Other Objects				\$5,507,135.00
900 Other Uses of Funds				
910 Redemption of Principal				23,405,000.00
Total Other Uses of Funds				\$23,405,000.00
Total 5110 Debt Service				\$28,912,135.00

LEA : 123464502 Lower Merion SD

Printed 3/11/2026 9:15:16 AM

REVISED SUBMISSION

General Fund (10)

5130 Refund of Prior Year Revenues / Receipts

Elementary

Secondary

Federal

Total

800 Other Objects

880 Refunds of Prior Years' Receipts

95,647.40

Total Other Objects

\$95,647.40

Total 5130 Refund of Prior Year Revenues / Receipts

\$95,647.40

LEA : 123464502 Lower Merion SD

Printed 3/11/2026 9:15:16 AM

REVISED SUBMISSION

General Fund (10)

	<u>Elementary</u>	<u>Secondary</u>	<u>Federal</u>	<u>Total</u>
5140 Leases and Other Right-to-Use Arrangements				
800 Other Objects				
830 Interest				8,261.29
Total Other Objects				\$8,261.29
900 Other Uses of Funds				
910 Redemption of Principal				250,495.33
Total Other Uses of Funds				\$250,495.33
Total 5140 Leases and Other Right-to-Use Arrangements				\$258,756.62

LEA : 123464502 Lower Merion SD

Printed 3/11/2026 9:15:16 AM

REVISED SUBMISSION

General Fund (10)

5200 Interfund Transfers – Out

Elementary

Secondary

Federal

Total

900 Other Uses of Funds

932 Capital Reserve Fund Transfers Applicable To Fund 32

4,000,000.00

Total Other Uses of Funds

\$4,000,000.00

Total 5200 Interfund Transfers – Out

\$4,000,000.00

LEA : 123464502 Lower Merion SD

Printed 3/11/2026 9:15:16 AM

REVISED SUBMISSION

General Fund (10)

5230 Capital Projects Fund Transfers

Elementary

Secondary

Federal

Total

900 Other Uses of Funds

932 Capital Reserve Fund Transfers Applicable To Fund 32

4,000,000.00

Total Other Uses of Funds

\$4,000,000.00

Total 5230 Capital Projects Fund Transfers

\$4,000,000.00

REVISED SUBMISSION

Capital Reserve Fund - § 1431 (32)

2000 Support Services

Total

400 Purchased Property Services

450 Construction Services

3,286,304.00

Total Purchased Property Services

\$3,286,304.00

700 Property

762 Capitalized Equipment - Replacement

628,260.00

Total Property

\$628,260.00

Total 2000 Support Services

\$3,914,564.00

LEA : 123464502 Lower Merion SD

Printed 3/11/2026 9:14:53 AM

REVISED SUBMISSION

Capital Reserve Fund - § 1431 (32)

2600 Operation and Maintenance of Plant Services

Elementary

Secondary

Federal

Total

400 Purchased Property Services

450 Construction Services

3,286,304.00

Total Purchased Property Services

\$3,286,304.00

Total 2600 Operation and Maintenance of Plant Services

\$3,286,304.00

LEA : 123464502 Lower Merion SD

Printed 3/11/2026 9:14:53 AM

REVISED SUBMISSION

Capital Reserve Fund - § 1431 (32)

2620 Operation of Buildings Services

400 Purchased Property Services

450 Construction Services

Elementary

Secondary

Federal

Total

3,286,304.00

Total Purchased Property Services

\$3,286,304.00

Total 2620 Operation of Buildings Services

\$3,286,304.00

LEA : 123464502 Lower Merion SD

Printed 3/11/2026 9:14:53 AM

REVISED SUBMISSION

Capital Reserve Fund - § 1431 (32)

2700 Student Transportation Services

Elementary

Secondary

Federal

Total

700 Property

762 Capitalized Equipment - Replacement

628,260.00

Total Property

\$628,260.00

Total 2700 Student Transportation Services

\$628,260.00

LEA : 123464502 Lower Merion SD

Printed 3/11/2026 9:14:53 AM

REVISED SUBMISSION

Capital Reserve Fund - § 1431 (32)

2720 Vehicle Operation Services

Elementary

Secondary

Federal

Total

700 Property

762 Capitalized Equipment - Replacement

628,260.00

Total Property

\$628,260.00

Total 2720 Vehicle Operation Services

\$628,260.00

LEA : 123464502 Lower Merion SD

Printed 3/11/2026 9:14:55 AM

REVISED SUBMISSION

Other Capital Projects Fund (39)

2000 Support Services

300 Purchased Professional and Technical Services

330 Other Professional Services

3,145.00

Total Purchased Professional and Technical Services

\$3,145.00

400 Purchased Property Services

450 Construction Services

1,547,396.87

Total Purchased Property Services

\$1,547,396.87

700 Property

739 Leases - Other

594,577.00

Total Property

\$594,577.00

Total 2000 Support Services

\$2,145,118.87

LEA : 123464502 Lower Merion SD

Printed 3/11/2026 9:14:55 AM

REVISED SUBMISSION

Other Capital Projects Fund (39)

2600 Operation and Maintenance of Plant Services

Elementary

Secondary

Federal

Total

300 Purchased Professional and Technical Services

330 Other Professional Services

3,145.00

Total Purchased Professional and Technical Services

\$3,145.00

400 Purchased Property Services

450 Construction Services

1,547,396.87

Total Purchased Property Services

\$1,547,396.87

Total 2600 Operation and Maintenance of Plant Services

\$1,550,541.87

LEA : 123464502 Lower Merion SD

Printed 3/11/2026 9:14:55 AM

REVISED SUBMISSION

Other Capital Projects Fund (39)

2620 Operation of Buildings Services

Elementary

Secondary

Federal

Total

300 Purchased Professional and Technical Services

330 Other Professional Services

3,145.00

Total Purchased Professional and Technical Services

\$3,145.00

400 Purchased Property Services

450 Construction Services

1,547,396.87

Total Purchased Property Services

\$1,547,396.87

Total 2620 Operation of Buildings Services

\$1,550,541.87

LEA : 123464502 Lower Merion SD

Printed 3/11/2026 9:14:55 AM

REVISED SUBMISSION

Other Capital Projects Fund (39)

2800 Support Services – Central

Elementary

Secondary

Federal

Total

700 Property

739 Leases - Other

594,577.00

Total Property				\$594,577.00
Total 2800 Support Services – Central				\$594,577.00

LEA : 123464502 Lower Merion SD

Printed 3/11/2026 9:14:55 AM

REVISED SUBMISSION

Other Capital Projects Fund (39)

2840 Data Processing Services

Elementary

Secondary

Federal

Total

700 Property

739 Leases - Other

594,577.00

Total Property

\$594,577.00

Total 2840 Data Processing Services

\$594,577.00

REVISED SUBMISSION

Other Capital Projects Fund (39)

4000 Facilities Acquisition, Construction and Improvement Services

Total

300 Purchased Professional and Technical Services

330 Other Professional Services

28,024.96

Total Purchased Professional and Technical Services

\$28,024.96

400 Purchased Property Services

450 Construction Services

172,232.50

Total Purchased Property Services

\$172,232.50

Total 4000 Facilities Acquisition, Construction and Improvement Services

\$200,257.46

LEA : 123464502 Lower Merion SD

Printed 3/11/2026 9:15:13 AM

REVISED SUBMISSION

Other Capital Projects Fund (39)

4500 Building Acquisition and Construction Services – Original and Additional

Elementary

Secondary

Federal

Total

300 Purchased Professional and Technical Services

330 Other Professional Services

28,024.96

Total Purchased Professional and Technical Services

\$28,024.96

400 Purchased Property Services

450 Construction Services

172,232.50

Total Purchased Property Services

\$172,232.50

Total 4500 Building Acquisition and Construction Services – Original and Additional

\$200,257.46

REVISED SUBMISSION

Debt Service Fund (40)

5000 Other Expenditures and Financing Uses

Total

800 Other Objects

830 Interest

1,082,400.00

Total Other Objects

\$1,082,400.00

Total 5000 Other Expenditures and Financing Uses

\$1,082,400.00

LEA : 123464502 Lower Merion SD

Printed 3/11/2026 9:15:23 AM

REVISED SUBMISSION

Debt Service Fund (40)

5100 Debt Service / Other Expenditures and Financing Uses

Elementary

Secondary

Federal

Total

800 Other Objects

830 Interest

1,082,400.00

Total Other Objects

\$1,082,400.00

Total 5100 Debt Service / Other Expenditures and Financing Uses

\$1,082,400.00

REVISED SUBMISSION

Debt Service Fund (40)

5110 Debt Service

800 Other Objects

830 Interest

Total Other Objects

Total 5110 Debt Service

Elementary

Secondary

Federal

Total

1,082,400.00

\$1,082,400.00

\$1,082,400.00

	<u>General Fund(10)</u>	<u>Student Sponsored Activity Fund(21)</u>	<u>Public Purpose Trust(27)</u>	<u>Other Compt Approved (28)</u>	<u>Athletic / Activity(29)</u>
1000 Instruction					
1100 Regular Programs - Elementary / Secondary	124,297,209.87				
1200 Special Programs - Elementary / Secondary	61,685,969.46				
1300 Vocational Education	876,251.07				
1400 Other Instructional Programs - Elementary / Secondary	1,021,154.11				
1500 Nonpublic School Programs	651.98				
Total Instruction	\$187,881,236.49				
2000 Support Services					
2100 Support Services - Students	11,756,407.37				
2200 Support Services - Instructional Staff	8,728,457.46				
2300 Support Services - Administration	18,772,205.56				
2400 Support Services - Pupil Health	4,536,660.35				
2500 Support Services - Business	1,511,735.81				
2600 Operation and Maintenance of Plant Services	23,879,473.19				
2700 Student Transportation Services	21,574,184.44				
2800 Support Services - Central	9,689,120.49				
2900 Other Support Services	789,260.04				
Total Support Services	\$101,237,504.71				
3000 Operation of Non-Instructional Services					
3200 Student Activities	6,312,315.20				
3300 Community Services	267,781.96				
Total Operation of Non-Instructional Services	\$6,580,097.16				
4000 Facilities Acquisition, Construction and Improvement Services					
4500 Building Acquisition and Construction Services - Original and Additional					
Total Facilities Acquisition, Construction and Improvement Services					
5000 Other Expenditures and Financing Uses					
5100 Debt Service / Other Expenditures and Financing Uses	29,266,539.02				
5200 Interfund Transfers - Out	4,000,000.00				
Total Other Expenditures and Financing Uses	\$33,266,539.02				
TOTAL ACTUAL EXPENDITURES & OTHER FINANCING USES	\$328,965,377.38				

LEA : 123464502 Lower Merion SD

Printed 3/11/2026 9:15:27 AM

REVISED SUBMISSION

	<u>Capital Reserve (690. 1850)(31)</u>	<u>Capital Reserve (1431)(32)</u>	<u>Other Capital Projects Fund(39)</u>	<u>Debt Service(40)</u>	<u>Permanent(90)</u>
1000 Instruction					
1100 Regular Programs - Elementary / Secondary					
1200 Special Programs - Elementary / Secondary					
1300 Vocational Education					
1400 Other Instructional Programs - Elementary / Secondary					
1500 Nonpublic School Programs					
Total Instruction					
2000 Support Services					
2100 Support Services - Students					
2200 Support Services - Instructional Staff					
2300 Support Services - Administration					
2400 Support Services - Pupil Health					
2500 Support Services - Business					
2600 Operation and Maintenance of Plant Services		3,286,304.00		1,550,541.87	
2700 Student Transportation Services		628,260.00			
2800 Support Services - Central				594,577.00	
2900 Other Support Services					
Total Support Services		\$3,914,564.00		\$2,145,118.87	
3000 Operation of Non-Instructional Services					
3200 Student Activities					
3300 Community Services					
Total Operation of Non-Instructional Services					
4000 Facilities Acquisition, Construction and Improvement Services					
4500 Building Acquisition and Construction Services - Original and Additional				200,257.46	
Total Facilities Acquisition, Construction and Improvement Services				\$200,257.46	
5000 Other Expenditures and Financing Uses					
5100 Debt Service / Other Expenditures and Financing Uses				1,082,400.00	
5200 Interfund Transfers - Out					
Total Other Expenditures and Financing Uses				\$1,082,400.00	
TOTAL ACTUAL EXPENDITURES & OTHER FINANCING USES		\$3,914,564.00		\$2,345,376.33	\$1,082,400.00

Total

1000 Instruction	
1100 Regular Programs - Elementary / Secondary	124,297,209.87
1200 Special Programs - Elementary / Secondary	61,685,969.46
1300 Vocational Education	876,251.07
1400 Other Instructional Programs - Elementary / Secondary	1,021,154.11
1500 Nonpublic School Programs	651.98
Total Instruction	\$187,881,236.49
2000 Support Services	
2100 Support Services - Students	11,756,407.37
2200 Support Services - Instructional Staff	8,728,457.46
2300 Support Services - Administration	18,772,205.56
2400 Support Services - Pupil Health	4,536,660.35
2500 Support Services - Business	1,511,735.81
2600 Operation and Maintenance of Plant Services	28,716,319.06
2700 Student Transportation Services	22,202,444.44
2800 Support Services - Central	10,283,697.49
2900 Other Support Services	789,260.04
Total Support Services	\$107,297,187.58
3000 Operation of Non-Instructional Services	
3200 Student Activities	6,312,315.20
3300 Community Services	267,781.96
Total Operation of Non-Instructional Services	\$6,580,097.16
4000 Facilities Acquisition, Construction and Improvement Services	
4500 Building Acquisition and Construction Services - Original and Additional	200,257.46
Total Facilities Acquisition, Construction and Improvement Services	\$200,257.46
5000 Other Expenditures and Financing Uses	
5100 Debt Service / Other Expenditures and Financing Uses	30,348,939.02
5200 Interfund Transfers - Out	4,000,000.00
Total Other Expenditures and Financing Uses	\$34,348,939.02
TOTAL ACTUAL EXPENDITURES & OTHER FINANCING USES	\$336,307,717.71

LEA : 123464502 Lower Merion SD

Printed 3/11/2026 9:15:39 AM

REVISED SUBMISSION

PSERS Salary Data (Salary Data should relate to the General Fund only)

Amount Description	Amount
Total Salary Base for salaries subject to PSERS withholding	152,872,708.38
Total Federally Funded salaries subject to PSERS withholding	346,397.88
	<hr/>

Title I Expenditure Data

Amount Description	Amount
Expenditures Funded with Current Title I Funds	366,051.00
Total Title I Expenditure Data	\$366,051.00
	<hr/>

Title IV Revenue Data

Amount Description	Amount
Revenue from Title IV-A-1: Student Support and Academic Enrichment Grants	29,785.00
	<hr/>

1 .	<u>Current Special Education Expenditures within Function 1000</u> See list of exclusions in the note below.	37,963,885.66
2 .	<u>Current Special Education Expenditures within Function 2000</u> See list of exclusions in the note below.	24,642,973.25
2A.	<u>Current Special Education Expenditures within Sub-Function 2100</u> This data should also be included in line 2 above. See list of exclusions in the note below.	3,513,150.80
2B.	<u>Current Special Education Expenditures within Sub-Function 2200</u> This data should also be included in line 2 above. See list of exclusions in the note below.	2,615,615.52
2C.	<u>Current Special Education Expenditures within Sub-Function 2700</u> This data should also be included in line 2 above. See list of exclusions in the note below.	5,811,786.48
3.	<u>Current Special Education Expenditures within Sub-Function 3100</u> See list of exclusions in the note below.	1,117,706.11
4.	<u>Current Special Education Expenditures within Sub-Function 3200</u> See list of exclusions in the note below.	1,349,124.10

Note: The Current Special Education Expenditure amounts for each line should be calculated as follows:

- * Include the total expenditures for special education costs from all governmental funds and the food service fund 51 for the function/sub-function requested
- * Exclude data from sub-functions: 1243,1450,1500,1600,1807,2280,2450,2750,2990
- * Exclude data from objects: 322,511,512,516,561,562,564,566,592,593,594,595,596,597,700,830,899

Benefits for Staff Relative to Collective Bargaining Agreements

	OBJECT	COVERED	NOT COVERED	TOTAL
10 General Fund				
	211 Medical Insurance			
	212 Dental Insurance			
	215 Eye Care Insurance			
	216 Prescription Insurance			
	271 Self-Insurance Medical Benefits	22,837,782.18	1,102,828.13	23,940,610.31
	272 Self-Insurance Dental Benefits	1,162,431.01	56,133.37	1,218,564.38
	275 Self-Insurance Eye Care Benefits	122,174.48	5,899.76	128,074.24
	276 Self-Insurance Prescription Benefits	5,796,124.63	279,892.73	6,076,017.36
	FUND TOTAL	\$29,918,512.30	\$1,444,753.99	\$31,363,266.29
50 Enterprise Fund				
	211 Medical Insurance			
	212 Dental Insurance			
	215 Eye Care Insurance			
	216 Prescription Insurance			
	271 Self-Insurance Medical Benefits	277,460.16	10,089.46	287,549.62
	272 Self-Insurance Dental Benefits	14,649.11	532.69	15,181.80
	275 Self-Insurance Eye Care Benefits	1,699.20	226.56	1,925.76
	276 Self-Insurance Prescription Benefits	63,788.19	2,319.57	66,107.76
	FUND TOTAL	\$357,596.66	\$13,168.28	\$370,764.94
60 Internal Service Fund	No Self Insurance data to report			
	211 Medical Insurance			
	212 Dental Insurance			
	215 Eye Care Insurance			
	216 Prescription Insurance			
	271 Self-Insurance Medical Benefits			
	272 Self-Insurance Dental Benefits			
	275 Self-Insurance Eye Care Benefits			
	276 Self-Insurance Prescription Benefits			
	FUND TOTAL			
Total of All Funds		\$30,276,108.96	\$1,457,922.27	\$31,734,031.23

LEA : 123464502 Lower Merion SD

Printed 3/11/2026 9:15:48 AM

REVISED SUBMISSION

Page - 1 of 1

Function	Special Education (Prior Year)	Nonspecial Education (Prior Year)	Total (Prior Year)	Special Education (Current Year)	Nonspecial Education (Current Year)	Total (Current Year)
2120 Guidance Services	1,133,294.93	4,241,689.24	5,374,984.17	1,232,778.34	4,535,174.74	5,767,953.08
2140 Psychological Services	1,658,698.34	1,105,798.89	2,764,497.23	1,678,903.97	1,119,269.31	2,798,173.28
2150 Speech Pathology and Audiology Services						
2160 Social Work Services						
2260 Instruction and Curriculum Development Services	971,335.85	2,429,902.89	3,401,238.74	969,704.70	2,890,133.76	3,859,838.46
2350 Legal and Accounting Services	491,137.42	824,679.52	1,315,816.94	426,840.56	576,364.20	1,003,204.76
2420 Medical Services		34,999.92	34,999.92		11,011.00	11,011.00
2440 Nursing Services	799,613.72	2,992,789.25	3,792,402.97	860,166.06	3,164,399.70	4,024,565.76
2700 Student Transportation Services	5,385,245.26	13,956,955.30	19,342,200.56	6,472,255.33	15,101,929.11	21,574,184.44
Total	\$10,439,325.52	\$25,586,815.01	\$36,026,140.53	\$11,640,648.96	\$27,398,281.82	\$39,038,930.78

LEA : 123464502 Lower Merion SD

Printed 3/11/2026 9:15:51 AM

REVISED SUBMISSION

(PRINCIPAL AMOUNTS ONLY)

GOVERNMENTAL FUNDS/ ACTIVITIES

	Short-Term Borrowing	General Obligation Bonds/Notes	Authority Building Obligations	Leases, Other Right to Use Arrangements	Extended Term Financing Agreements	Other Long Term Debt/Liabilities	OPEB, Comp Abs, Net Pension Liab	Total
1. Debt at Beginning of Fiscal Year		174,170,000.00		161,346.00			442,745,833.00	617,077,179.00
2. Additional Debt Incurred During Year				594,577.00			9,272,828.00	9,867,405.00
3. Retirements and Repayments		23,405,000.00		249,998.00			23,893,955.00	47,548,953.00
4. Debt at End of Fiscal Year		150,765,000.00		505,925.00			428,124,706.00	579,395,631.00
5. Accreted Interest at End Of Fiscal Year								
6. Total Debt and Accreted Interest		150,765,000.00		505,925.00			428,124,706.00	579,395,631.00
7. Current Portion P&I - Due within 1 year		30,206,773.00		156,611.00			137,015.00	30,500,399.00
8. Interest Paid during current fiscal year		6,589,535.00		8,261.29				6,597,796.29

(PRINCIPAL AMOUNTS ONLY)

PROPRIETARY FUNDS

	Short-Term Borrowing	General Obligation Bonds/Notes	Authority Building Obligations	Leases, Other Right to Use Arrangements	Extended Term Financing Agreements	Other Long Term Debt/Liabilities	OPEB, Comp Abs, Net Pension Liab	Total
1. Debt at Beginning of Fiscal Year							3,565,759.00	3,565,759.00
2. Additional Debt Incurred During Year							206,634.00	206,634.00
3. Retirements and Repayments								
4. Debt at End of Fiscal Year							3,772,393.00	3,772,393.00
5. Accreted Interest at End Of Fiscal Year								
6. Total Debt and Accreted Interest							3,772,393.00	3,772,393.00
7. Current Portion P&I - Due within 1 year								
8. Interest Paid during current fiscal year								

Total Principal and Interest Payments Made by Your School - All Funds

Function	Fund		Principal (910)	Principal (920)	Interest (830)	Total (Principal +Interest)	Misc Other Uses (990)
5110	10	General Fund	23,405,000.00		5,507,135.00	28,912,135.00	
5110	20	Special Revenue Funds					
5110	30	Capital Projects Funds					
5110	40	Debt Service Fund			1,082,400.00	1,082,400.00	
5110	90	Permanent Fund					
5120	10	General Fund					
5120	20	Special Revenue Funds					
5120	30	Capital Projects Funds					
5120	40	Debt Service Fund					
5140	10	General Fund	250,495.33		8,261.29	258,756.62	
5140	20	Special Revenue Funds					
5140	30	Capital Projects Funds					
5140	40	Debt Service Fund					
5140	90	Permanent Fund					
Total Debt Payments - Governmental Funds			\$23,655,495.33		\$6,597,796.29	\$30,253,291.62	

Function	Fund		Principal (910)	Principal (920)	Interest (830)	Total (Principal +Interest)
5110	50	Enterprise Fund				
5110	60	Internal Service Fund				
5120	50	Enterprise Fund				
5120	60	Internal Service Fund				
5140	50	Enterprise Fund				
5140	60	Internal Service Fund				

Total Debt Payments - Proprietary Funds

LEA : 123464502 Lower Merion SD

Printed 3/11/2026 9:15:51 AM

REVISED SUBMISSION

Debt Details
Governmental Funds/ Activities

Debt Category	Debt Issue Date (MM/YYYY)	Principal Amounts Only				Current Portion Due Within One Year (Principal and Interest)	Interest Paid During Fiscal Year
		Debt at Beginning of Fiscal Year	Additions	Reductions / Repayments	Debt at End of Fiscal Year		
General Obligation Bonds/Notes – CIB	03/2021	18,660,000.00		3,365,000.00	15,295,000.00	4,221,125.00	848,875.00
General Obligation Bonds/Notes – CIB	12/2020	50,610,000.00		5,000.00	50,605,000.00	5,572,425.00	2,164,925.00
General Obligation Bonds/Notes – CIB	09/2019	11,385,000.00		8,050,000.00	3,335,000.00	3,360,013.00	110,400.00
General Obligation Bonds/Notes – CIB	09/2019	24,450,000.00		250,000.00	24,200,000.00	2,613,250.00	1,059,500.00
General Obligation Bonds/Notes – CIB	03/2016	25,205,000.00		1,175,000.00	24,030,000.00	1,927,150.00	752,400.00
General Obligation Bonds/Notes – CIB	04/2015	6,275,000.00		490,000.00	5,785,000.00	972,910.00	182,835.00
General Obligation Bonds/Notes – CIB	04/2015	14,340,000.00		2,700,000.00	11,640,000.00	3,087,500.00	389,700.00
General Obligation Bonds/Notes – CIB	02/2009	23,245,000.00		7,370,000.00	15,875,000.00	8,452,400.00	1,080,900.00
Leases and Other Right to Use Arrangements		161,346.00	594,577.00	249,998.00	505,925.00	156,611.00	8,261.29
Compensated Absences		2,388,600.00	8,298,677.00		10,687,277.00	137,015.00	
Other Post-Employment Benefits (OPEB)		26,946,733.00	974,151.00	300,304.00	27,620,580.00		
Net Pension Liability		413,410,500.00		23,593,651.00	389,816,849.00		
Totals for Debt Entered:		\$617,077,179.00	\$9,867,405.00	\$47,548,953.00	\$579,395,631.00	\$30,500,399.00	\$6,597,796.29

Bond Details
Proprietary Funds

Debt Category	Debt Issue Date (MM/YYYY)	Principal Amounts Only				Current Portion Due Within One Year (Principal and Interest)	Interest Paid During Fiscal Year
		Debt at Beginning of Fiscal Year	Additions	Reductions / Repayments	Debt at End of Fiscal Year		
Other Post-Employment Benefits (OPEB)		138,878.00	13,900.00		152,778.00		
Net Pension Liability		3,426,881.00	192,734.00		3,619,615.00		
Totals for Debt Entered:		\$3,565,759.00	\$206,634.00		\$3,772,393.00		

General Fund (10)

Section 1: Tuition/Purchased Services as Reported within Expenditure Detail

	Amount
Tuition Reported in General Fund Expenditures 1000-560	9,066,164.22
Purchased Services in General Fund Expenditures 1000-594 and 1000-597	1,564.24
Section 1 Total	\$9,067,728.46

Section 2: Tuition Paid to Institution Types During Fiscal Year

	Tuition Paid For Nonspecial Education	Tuition Paid For Special Education	Total
1 1306 Institutions			
2 Institutionalized Children's Programs		1,564.24	1,564.24
3 Juveniles Incarcerated in Adult Facilities			
4 Residential Treatment Facilities			
5 Other Local Education Agencies		34,693.56	34,693.56
6 Brick and Mortar Charter Schools	8,514.36	106,757.54	115,271.90
7 Cyber Charter Schools	541,366.62	873,944.46	1,415,311.08
8 Career and Technology Centers	876,251.07		876,251.07
9 Approved Private Schools		2,950,418.94	2,950,418.94
10 PA Chartered Schools for the Deaf and Blind			
11 Private Residential Rehabilitative Institutions	23,047.00		23,047.00
12 Juvenile Detention Centers			
13 Special Program Jointures			
14 Other Tuition Not Included Elsewhere In This Section	35,850.00	3,615,320.67	3,651,170.67
Section 2 Total	\$1,485,029.05	\$7,582,699.41	\$9,067,728.46

Food Service / Cafeteria Operations Fund (51)

2000 Support Services

300 Purchased Professional and Technical Services

360 Employee Training and Development Services

Total

2,139.44

Total Purchased Professional and Technical Services

\$2,139.44

500 Other Purchased Services

580 Travel

508.96

Total Other Purchased Services

\$508.96

800 Other Objects

810 Dues and Fees

2,617.95

Total Other Objects

\$2,617.95

Total 2000 Support Services

\$5,266.35

LEA : 123464502 Lower Merion SD

Printed 3/11/2026 9:15:59 AM

REVISED SUBMISSION

Food Service / Cafeteria Operations Fund (51)

2800 Support Services – Central

Elementary

Secondary

Federal

Total

300 Purchased Professional and Technical Services

360 Employee Training and Development Services

2,139.44

Total Purchased Professional and Technical Services

\$2,139.44

500 Other Purchased Services

580 Travel

508.96

Total Other Purchased Services

\$508.96

800 Other Objects

810 Dues and Fees

2,617.95

Total Other Objects

\$2,617.95

Total 2800 Support Services – Central

\$5,266.35

LEA : 123464502 Lower Merion SD

Printed 3/11/2026 9:15:59 AM

REVISED SUBMISSION

Food Service / Cafeteria Operations Fund (51)

2830 Staff Services	<u>Elementary</u>	<u>Secondary</u>	<u>Federal</u>	<u>Total</u>
300 <u>Purchased Professional and Technical Services</u>				
360 Employee Training and Development Services				2,139.44
Total Purchased Professional and Technical Services				\$2,139.44
500 <u>Other Purchased Services</u>				
580 Travel				508.96
Total Other Purchased Services				\$508.96
800 <u>Other Objects</u>				
810 Dues and Fees				2,617.95
Total Other Objects				\$2,617.95
Total 2830 Staff Services				\$5,266.35

Food Service / Cafeteria Operations Fund (51)

2836 Staff Development Services – Non-Instructional, Non-Certified Staff Only

Elementary

Secondary

Federal

Total

300 Purchased Professional and Technical Services

360 Employee Training and Development Services

2,139.44

Total Purchased Professional and Technical Services

\$2,139.44

500 Other Purchased Services

580 Travel

508.96

Total Other Purchased Services

\$508.96

800 Other Objects

810 Dues and Fees

2,617.95

Total Other Objects

\$2,617.95

Total 2836 Staff Development Services – Non-Instructional, Non-Certified Staff Only

\$5,266.35

LEA : 123464502 Lower Merion SD

Printed 3/11/2026 9:16:04 AM

REVISED SUBMISSION

Food Service / Cafeteria Operations Fund (51)

3000 Operation of Non-Instructional Services

Total

100 Personnel Services – Salaries

100 Personnel Services – Salaries 1,732,294.17

Total Personnel Services – Salaries \$1,732,294.17

200 Personnel Services – Employee Benefits

210 Group Insurance – Contracted Provider 2,832.90

220 Social Security Contributions 130,824.90

230 PSERS Retirement Contributions 781,841.50

260 Workers’ Compensation 10,081.03

270 Group Insurance – Self-Insurance 370,764.94

280 Other Post-Employment Benefits (OPEB) 15,000.00

Total Personnel Services – Employee Benefits \$1,311,345.27

400 Purchased Property Services

430 Repairs and Maintenance Services 53,630.51

Total Purchased Property Services \$53,630.51

500 Other Purchased Services

530 Communications 14.60

580 Travel 691.28

Total Other Purchased Services \$705.88

600 Supplies

610 General Supplies 113,343.63

630 Food 2,359,003.48

650 Supplies & Fees – Technology Related 15,491.35

Total Supplies \$2,487,838.46

700 Property

740 Depreciation 32,658.54

Total Property \$32,658.54

800 Other Objects

810 Dues and Fees 4,067.76

Total Other Objects \$4,067.76

Total 3000 Operation of Non-Instructional Services \$5,622,540.59

LEA : 123464502 Lower Merion SD

Printed 3/11/2026 9:16:04 AM

REVISED SUBMISSION

Food Service / Cafeteria Operations Fund (51)

3100 Food Services

Elementary

Secondary

Federal

Total

100 Personnel Services – Salaries

100 Personnel Services – Salaries

1,732,294.17

Total Personnel Services – Salaries

\$1,732,294.17

200 Personnel Services – Employee Benefits

210 Group Insurance – Contracted Provider

2,832.90

220 Social Security Contributions

130,824.90

230 PSERS Retirement Contributions

781,841.50

260 Workers' Compensation

10,081.03

270 Group Insurance – Self-Insurance

370,764.94

280 Other Post-Employment Benefits (OPEB)

15,000.00

Total Personnel Services – Employee Benefits

\$1,311,345.27

400 Purchased Property Services

430 Repairs and Maintenance Services

53,630.51

Total Purchased Property Services

\$53,630.51

500 Other Purchased Services

530 Communications

14.60

580 Travel

691.28

Total Other Purchased Services

\$705.88

600 Supplies

610 General Supplies

113,343.63

630 Food

2,359,003.48

650 Supplies & Fees – Technology Related

15,491.35

Total Supplies

\$2,487,838.46

700 Property

740 Depreciation

32,658.54

Total Property

\$32,658.54

800 Other Objects

810 Dues and Fees

4,067.76

Total Other Objects

\$4,067.76

Total 3100 Food Services

\$5,622,540.59

REVISED SUBMISSION

	<u>Food Service(51)</u>	<u>Child Care Operations(52)</u>	<u>Other Enterprise(58)</u>	<u>Internal Service(60)</u>	<u>Total</u>
2000 <u>Support Services</u>					
2800 Support Services - Central		5,266.35			5,266.35
Total Support Services		\$5,266.35			\$5,266.35
3000 <u>Operation of Non-Instructional Services</u>					
3100 Food Services		5,622,540.59			5,622,540.59
Total Operation of Non-Instructional Services		\$5,622,540.59			\$5,622,540.59
TOTAL ACTUAL EXPENDITURES & OTHER FINANCING USES		\$5,627,806.94			\$5,627,806.94

LEA : 123464502 Lower Merion SD

Printed 3/11/2026 9:16:22 AM

REVISED SUBMISSION

Fund	School	School Number	Local Personnel	Local Nonpersonnel	State Personnel	State Nonpersonnel	Federal Personnel	Federal Nonpersonnel	Total	Explanation
10	Bala-Cynwyd MS	3293	20,800,680.56	2,706,099.25	3,801,110.21	494,511.78	262,619.53	34,165.93	28,099,187.26	
	Belmont Hills El Sch	7597	8,823,561.80	1,150,691.27	1,612,415.07	210,276.98	111,402.11	14,528.08	11,922,875.31	
	Black Rock MS	8500	26,436,245.11	3,508,142.37	4,830,951.61	641,076.90	333,771.50	44,292.14	35,794,479.63	
	Cynwyd Sch	3286	9,888,873.01	1,244,913.55	1,807,089.73	227,495.13	124,852.22	15,717.69	13,308,941.33	
	Gladwyne Sch	3291	11,858,145.85	1,640,585.61	2,166,954.06	299,800.13	149,715.33	20,713.26	16,135,914.24	
	Harriton SHS	3296	31,436,406.72	4,183,788.41	5,744,679.66	764,544.25	396,901.17	52,822.53	42,579,142.74	
	Lower Merion HS	3295	39,697,997.46	5,405,659.60	7,254,400.31	987,828.63	501,208.10	68,249.30	53,915,343.40	
	Merion El Sch	3287	10,308,687.68	1,435,407.33	1,883,806.54	262,305.91	130,152.61	18,122.77	14,038,482.84	
	Penn Valley Sch	3288	12,768,245.29	1,689,293.59	2,333,265.37	308,701.01	161,205.81	21,328.22	17,282,039.29	
	Penn Wynne Sch	3289	13,883,250.79	1,775,196.58	2,537,021.14	324,398.90	175,283.34	22,412.79	18,717,563.54	
	Welsh Valley MS	3294	21,372,356.76	2,634,754.67	3,905,578.15	481,474.29	269,837.25	33,265.15	28,697,266.27	
Total			207,274,451.03	27,374,532.23	37,877,271.85	5,002,413.91	2,616,948.97	345,617.86	280,491,235.85	