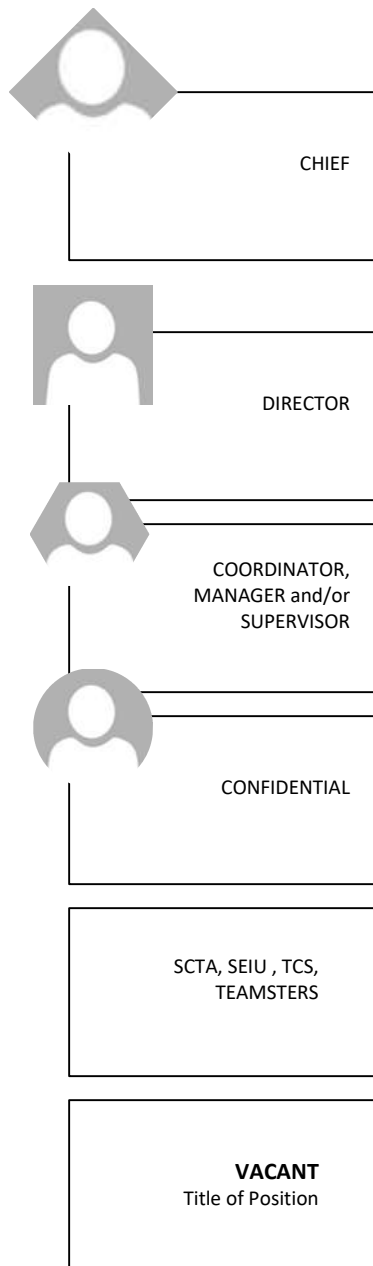


**QUICK DATA KEY**



Note: The number displayed within each box represents the total count of individuals or assignments and/or positions associated with that title. This figure reflects the number of vacancies, regardless of FTE value. (e.g. 1.0, 0.5, 0.3875, 0.25, etc.)

Deputy Sup Office



Deputy Superintendent (1)



Board of Education Specialist (1)

Director III Student Svcs/ Alt Ed(1)

Director III Enrollment Center (1)

Director II, Const Services (1)

Director III, Fed & State Prog (1)

Dir II Innovative Schools (1)

Area Assistant Superintendent (3)

Exe Dir Office of Safe Schools (1)

Director, Behavior & Re Entry (1)

Spclst, Attendance & Enrollment

Ombudsperson (3)

Coord II, State and Fed Prog (1)

Budget Analyst (1)

VACANT Area Assistant Superintendent (1)

Coord I, Safety Interv & Resp (1)

Spec II Bullying Prevention (1)

Adm & Family Svcs Tech (7)

Budget Analyst (1)

Budget Analyst (1)

Fund Spec (1)

Administrative Asst-EIS (1)

Gang Violence Prev/Intrvntn Sp (1)

Office Tech III (1)

Matric & Orient Cntr Spec (1)

Office Asst-Fiscal Svcs (1)

Office Asst-Fiscal Svcs (1)

Executive Director, LCAP

Supv I, Safety Officer (10)

Supv I, Safety Officer (10)

VACANT Office Tech III (1) 1.0FTE

Spec Progr & Advanced Learning (1)

Coord II, Family & Comm Empwr (1)

Executive Director, LCAP

Executive Director, LCAP

Lead Campus Supervisor (19)

Lead Campus Supervisor (19)

Mgmt Information Tech (2)

Office Tchncn III (1)

Coord II, Family & Comm Empwr (1)

Executive Director, LCAP

Executive Director, LCAP

Security Officer (6)

Security Officer (6)

Pupil Personnel Records Tech (1)

Office Tchncn III (1)

Training Specialist (1)

Executive Director, LCAP

Executive Director, LCAP

VACANT Deputy Chief of Schools (1) 1.0 FTE

Legal Serv/ Safe Schools Spec (1)

Family Partnership Facilitator (4)

Training Specialist (1)

Executive Director, LCAP

Executive Director, LCAP

VACANT SECURITY SERV Security Officer (1) 0.4 FTE

Legal Serv/ Safe Schools Spec (1)

VACANT Specialist, Enroll TK/ Admn FS (1) 1.0 FTE

\* Based on Position Control





**Academic Office  
SPED**


 Admin Asst,  
Ed-Special Ed  
(1)

 Chief Academic  
Officer (1)

 Admin Asst,  
Ed-Special Ed  
(1)

 **VACANT**  
Director III,  
Special Educ (1)  
1.0 FTE


 Asst Sup,  
Spec Ed I & L  
(1)


 Dir III, SELPA  
(1)

Certified  
Occup Therapy  
Asst (3)

Employment  
Coach SpEd (2)

Interp for the  
Deaf (4)

 Admin,  
Teaching and  
Learning (3)

 Board Cert  
Behavior  
Analyst (2)

IEP Desig Inst  
Para-Sp Ed (67)

Inst Aid, Spec  
Ed (25)

Medi-Cal  
Rmbrsmnt  
Prog Splclst (1)

Occupational  
Therapist (13)

Assistive  
Technology  
Spec (1)

School Social  
Worker (7)

Clinician Psych/  
Soc Wrkr (6)

Educational  
Audiologist (1)

Job Developer,  
Employment  
Svc (1)

Office Tchncn  
III (5)

Office Tchncn  
II (1)

Program Rec  
Tech SpEd (1)

School  
Psychologist  
(59)

Lang. Speech &  
Hearing Splclst  
(49)

Teacher,  
Resource,  
Special Ed. (2)

Registered  
Behavior  
Technician (4)


Transition Asst  
SpEd (2)

Site Cmptr  
Suprt Tech II  
(1)

Special Ed  
Applications  
Splclst (2)

Program  
Specialist,  
Special Ed (15)

Fund Spec (1)

 Budget  
Analyst (1)

Speech-Lang  
Pathology Asst  
(9)

Teacher, Spec  
Ed (28)

Training  
Specialist, Spec.  
Ed (1)

Vocational  
Splclst,  
Handicapped (1)

Behav Intrv  
SP Spec Ed  
Dept (15)

**VACANT**  
Board Cert  
Behavior  
Analyst (7)  
7.0FTE

**VACANT**  
Teacher, Spec  
Ed (3)  
3.0 FTE

**VACANT**  
Assistive  
Technology  
Spec (1)  
1.0 FTE

**VACANT**  
School  
Psychologist  
(1) 1.0FTE

**VACANT**  
Interp for the  
Deaf (26)  
19.5 FTE

**VACANT**  
Occupational  
Therapist (21)  
21.0 FTE

**VACANT**  
Physical  
Therapist (3)  
3.0 FTE

**VACANT**  
Speech-Lang  
Pathology Asst  
(3)  
2.5 FTE

**VACANT**  
Inst Aid, Spec  
Ed (22)  
16.5 FTE

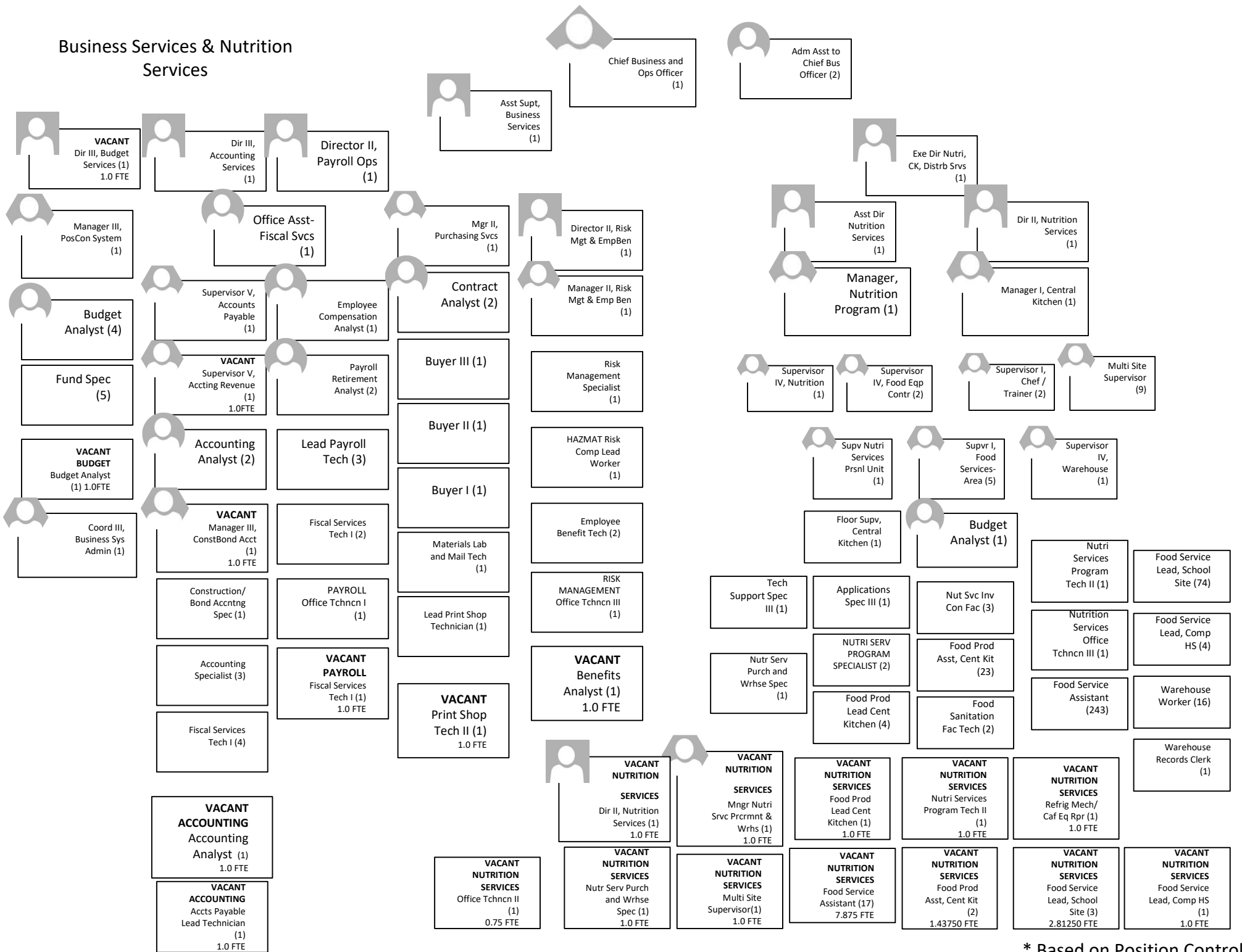
**VACANT**  
Lang. Speech &  
Hearing Splclst  
(61)  
62.90 FTE

**VACANT**  
IEP Desig Inst  
Para-Sp Ed  
(484)  
362.5 FTE

**VACANT**  
Augmentative  
Alt Comm Spec  
(4)  
4.0 FTE

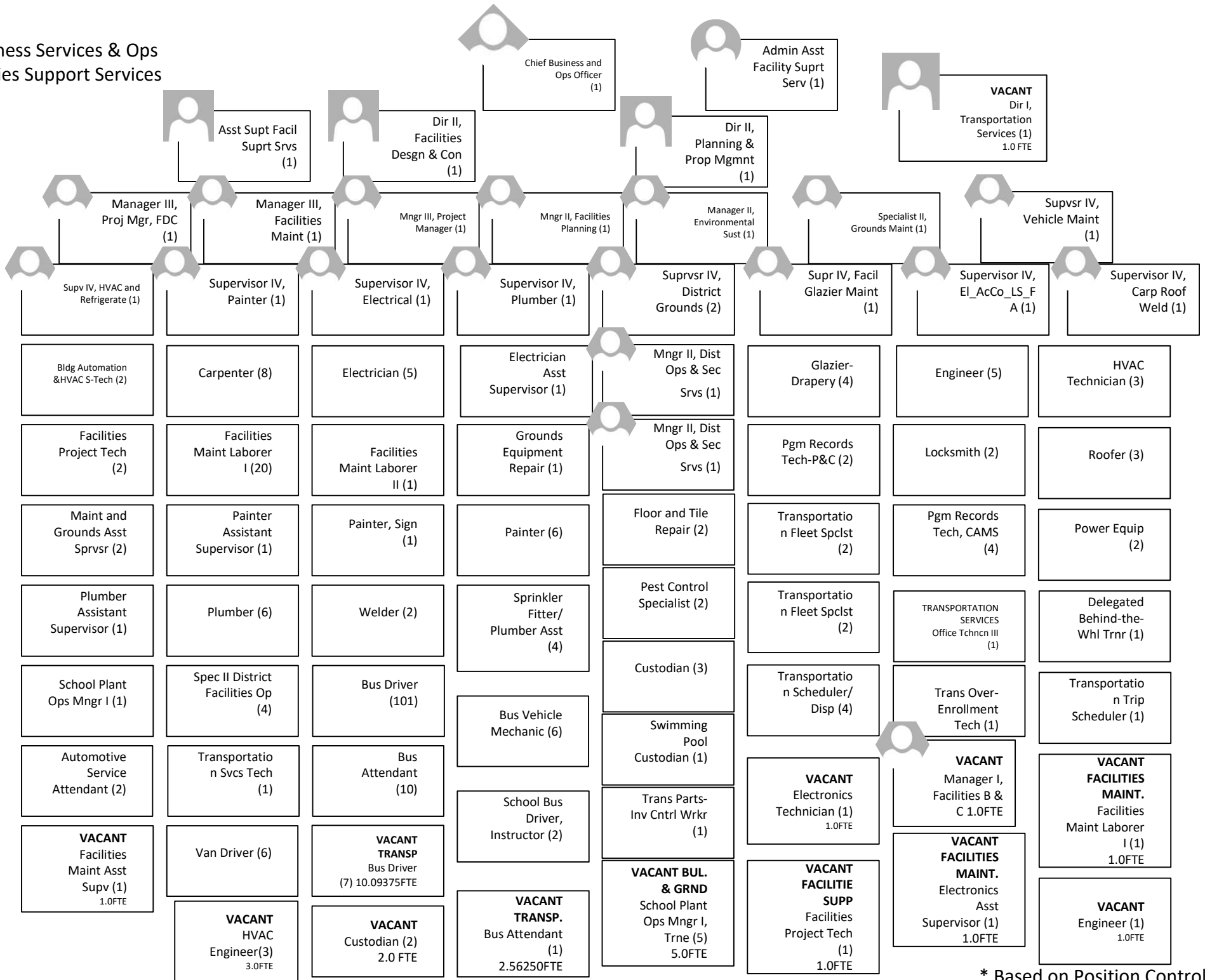
\* Based on Position Control

# Business Services & Nutrition Services



\* Based on Position Control 03/17/2026

Business Services & Ops  
Facilities Support Services



\* Based on Position Control

Human Resources




**VACANT**  
Chief HR Officr & Ld  
Negotiatr (1  
1.0FTE)




Dir II, Human  
Resources Srvs (4)




Director II Employee  
Relations (2)




Director II, Talent  
Management (1)



Coordinator I, Title IX  
(1)



Personnel Specialist  
(2)



Employee Relations  
Analyst (1)



Administrative Asst-  
HRS (1)



HRS Analyst (4)




HRS Tech Analyst,  
CARES (1)



Office Assistant, HR  
Services (2)



HR Serv, Audit &  
Compl Analyst (1)



Recruitment &  
Selection Spclst (2)

Customer Service  
Specialist (3)


Personnel Tech I (3)

Pers Tech II (6)

Prsnl Tech,  
Substitute Srvs (2)

**VACANT**  
Customer  
Service Specialist  
(1)  
1.0 FTE

Communications



Chief  
Communications  
Officer  
(1)



Manager II,  
Communications Ofc  
(1)



**VACANT**  
Mnger II Community  
Engagement (1)  
1.0 FTE



Spclst, Mrktng and  
Grphc Dsgn (1)



Administrative Asst-  
EIS (1)

Webmaster/Comm  
Spec (1)

Technology Services

