

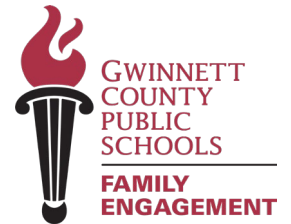
Baldwin Elementary School

25.26 TITLE I PLANNING MEETING

Date: March 12th

Time: 10am

School Location: Parent Center



Welcome

- *Introductions*

- *Purpose of meeting:*

This meeting is about shared decision-making. All families and community members share in the decision-making process. Your voice matters in shaping how Title I funds support student success. We need your input!

Parents, family members, members of the community, and school staff join the Title I Planning meeting once a year in the Spring to review and provide input and jointly develop the following documents:

At your school	At the GCPS district level
Local School Plan for Improvement (LSPI)	District Improvement Plan (DIP)
The Plan...Promise...	District Family and Community Engagement Plan
Title I Budget	District Title I Budget

Title I Overview

- Is the largest federal assistance program for schools.
- Provides support to students who are at risk of not meeting the State's academic standards.
- Determines funding by the number of students receiving free or reduced-price lunch.
- Supports parents/families by offering activities and training opportunities to increase engagement in their children's education.

Local School Input Form

Throughout today's meeting, you'll have multiple opportunities to provide input on various aspects of our school's Title I program. We've created an input form to capture your thoughts, suggestions, and questions.

Please ask if you need assistance completing the form.



FEDERAL PROGRAMS - OFFICE OF FAMILY ENGAGEMENT

LOCAL SCHOOL PLANNING MEETING INPUT FORM 2026 - 2027

School Name: _____ Date: _____

Please return completed form to: _____

TITLE I COMPONENT	Do YOU HAVE SUGGESTIONS FOR CHANGES?		SUGGESTIONS <small>(IF YOU CHECKED YES, PLEASE WRITE YOUR SUGGESTIONS FOR CHANGE IN THIS COLUMN)</small>
	Yes	No	
1. School Goals			
2. The Plan...The Promise...			
3. Budget and Prioritized Wish List			

4. *What do you think staff members need to know to better assist you in supporting our child's learning?* _____



DATA AND SCHOOL GOALS


Understanding where we are helps us determine where we need to go.

Let's examine our school's performance data together and identify opportunities for growth and celebration.

School Profile Dashboard Data

APTI will share the 2024-25 [GCPS School Profile Dashboard SY 2024-25](#) data with families





Gwinnett County Public Schools
School Profile Dashboard
 Superintendent: Dr. Calvin J. Watts
 School Year 2023-24

Gwinnett County Public Schools has created this school Profile Dashboard to provide our parents and community members with meaningful information about our schools.

- Select a language from the dropdown box below.
- Select or search for a school from the dropdown box below.
- Click the SUBMIT button to view the dashboard for the selected school.

Languages


English

SCHOOL


Archer HS

Submit


Click the button below to view the user guide.




Click the button below to view the instructional video.



Click the button below to leave feedback.



This dashboard is updated yearly in January and July, representing data collected for the 2023-24 School Year.



Archer High School
 Principal: Dr. Conquisha D. Thompson (Since 2022)
 School Year 2023-24

Click to change school or language

Summary
Students
Student Performance
Staff
Family
Resources

Student Demographics

How many students do we serve?

SCHOOL	GCPS HS	GCPS
3,063	59,368	182,214

What is the racial and ethnic background of our students?

● Amer Ind ● Asian ● Black ● Hispanic ● Multiracial ● White

	Amer Ind	Asian	Black	Hispanic	Multiracial	White
Archer HS		54.6%	19.9%	16.7%		
GCPS HS	12.0%	33.5%	34.2%	16.3%		
GCPS	11.9%	32.1%	35.4%	15.9%		

What percent of students receive support services?

Free & Reduced Priced Meals			Multilingual Learner Education		
SCHOOL	GCPS HS	GCPS	SCHOOL	GCPS HS	GCPS
54.0%	60.3%	65.0%	6.9%	16.3%	25.9%

Special Education

SCHOOL	GCPS HS	GCPS	Gifted Education	GCPS HS	GCPS
13.3%	12.7%	13.7%	18.8%	20.1%	16.2%

Staff Demographics

What is the demographic composition of our staff?

Certified Staff by Gender

● Female ● Male

	Female	Male
Archer HS	63.5%	36.5%
GCPS HS	60.6%	39.4%
GCPS	79.6%	20.4%

Certified Staff by Race/Ethnicity

● Amer Ind ● Asian ● Black ● Hispanic ● White

	Amer Ind	Asian	Black	Hispanic	White
Archer HS		26.0%	5.5%		66.9%
GCPS HS	4.9%	26.8%	7.5%		60.2%
GCPS	5.1%	31.5%	7.4%		56.1%

This dashboard is updated yearly in January and July, representing data collected for the 2023-24 School Year.

What does the data tell us?

“Say Something” Protocol

Review the data and use the *“Say Something”* sentence starters outlined below to share statements regarding the data. What parts of the data catch your attention?

Something I noticed...

Something I wonder about...

Something that puzzles me ...

Something I'm reminded of when I review the data ...

Something I would like to talk more about ...

Educational Effectiveness Survey (EES) – Family Perceptions Results Data

2024-25 Family Perceptions
Educational Effectiveness Survey™ - FAMILY
Baldwin ES



Survey Item Summary

Family Engagement Workshop Input

Response Count by Language

THEME ↑	QUESTION	% POSITIVE RESPONSES*
Communication	This school communicates with me about my student's progress	88.6%
	Communication/materials I receive from the school are in a language I can understand	95.3%
	I am encouraged to collaborate with my student's teachers about my student's learning	86.4%
	This school communicates effectively with my family	87.7%
Parent & Community Involvement	When I share concerns with my student's teacher, they listen	86.6%
	Parents/families have input into plans for improving this school	83.6%
	Parent organizations at this school actively encourage all families to participate	87.0%
	There is a high level of community support for this school	92.2%
	Parents/families participate in important decisions about their student's education	88.5%
	This school respects the different cultures represented in our community	89.9%
	This school tells me how I can help my student with homework	86.9%
	I feel welcome at this school	92.6%

Data Sources: GCPS Administrative Data, Center for Educational Effectiveness- Educational Effectiveness Survey™ - FAMILY
Note: % Positive Responses represents the percentage of respondents indicating that they either "Strongly Agree" or "Agree".

Each year, families complete the Educational Effectiveness Survey (EES) to share their perceptions about school climate, communication, student support, and educational quality. Your honest feedback helps us understand what's working well and where we can improve.



Educational Effectiveness Survey (EES) Results Data

Turn and Talk:

- *What do you notice?*
- What were the results of the 2024-25 year's survey?
- How can we use this information?

Local School Plan for Improvement



-
- + Each school is responsible for the development of a local school plan for improvement (LSPI).
 - + The Local School Plan for Improvement is aligned to the district's strategic plan.
 - + Schools continually review their data sets to determine areas needing improvement and write long-term goals that are focused on the identified areas.
 - + For each goal, a school identifies specific, measurable, annual objectives and then determine how to best achieve these.
 - + The LSPI development process involves teachers, parents, and community members, so the entire school community has the opportunity to be involved in conversations about school improvement.

Local School Plan for Improvement (LSPI)- What are our School's Goals and How do we plan to accomplish our goals ?

Empathy 1.B - Staff and Student Well Being

Goal #1:

- ↑ Our goal is to promote self-awareness, self-management, social awareness, responsible decision-making, and relationship skills for our students. In addition, our focus is to promote regular attendance and intentional student engagement.

Action Step 1:

- ↑ Provide additional SEL professional development for staff to deepen their understanding of students' feelings, perceptions, input, and well-being.

Action Step 2:

- ↑ Provide additional opportunities for students to share input and demonstrate ownership of their learning and school experience.

Building Parent Capacity Activities- Provide academic and wellness opportunities to build parents' capacity and create an environment where parents feel welcome.

Local School Plan for Improvement (LSPI)- What are our School's Goals and How do we plan to accomplish our goals ?

Equity 2.A - Multi-tiered System of Supports

Goal #2:

- ↑ Identify academic and non-academic strengths, needs, and interests of each and every student to ensure whole learner, whole child focus.

Action Step 1:

- ↑ Implement explicit HQTI Instruction and conduct learning walks to effectively monitor and provide intentional just-in-time feedback.

Action Step 2:

- ↑ Provide professional development and implement Specially Designed Instruction (SDI) for all target groups (IEP, ML, and gifted).

Building Parent Capacity Activity- Parent/Teacher Conferences and parent workshops

Local School Plan for Improvement (LSPI)- What are our School's Goals and How do we plan to accomplish our goals ?

Equity 2.B - Opportunity and Access

Goal #3:

- ↑ Increase students' opportunities to learn and achieve by consistently implementing a high-quality curriculum that reflects grade-level expectations with a focus on early literacy and reading.

Action Step 1:

- ↑ Implement explicit HQTI Instruction and conduct learning walks to effectively monitor and provide intentional just-in-time feedback.

Action Step 2:

- ↑ Analyze and disaggregate data (academic and PBIS) to determine the next steps for planning and instruction (utilize new GaMTSS Team Fidelity Tool).

Building Parent Capacity Activity- Annual Title 1 Meeting

Local School Plan for Improvement (LSPI)- What are our School's Goals and How do we plan to accomplish our goals ?

Excellence 4.C - World-Class Communication and Engagement

Goal #4:

Parents who actively participate in their child's education contribute significantly to their academic, social, and emotional development.

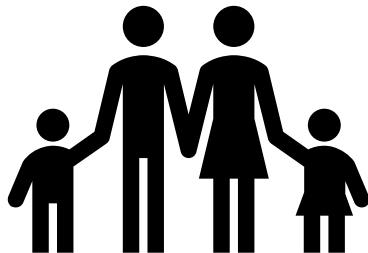
Action Step 1:

- ↑ Provide family and community engagement opportunities to allow families to share input impacting school change; share concerns about their child's progress; and gain a greater understanding of the curriculum and multi-tiered system of supports.

Action Step 2:

- ↑ Provide family, community, and engagement training for staff to improve communication and partnerships between the home and school.

Building Parent Capacity Activity- Title Planning Meeting, School Council, Parent Workshops,
Volunteer Opportunities



Family and Community Engagement Documents

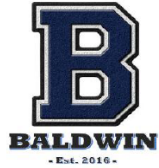
Strong partnerships between school and home create the foundation for student success. Let's review the key documents that guide our family engagement efforts.

Title I School-Family Plan...The Promise...

BALDWIN ELEMENTARY SCHOOL

THE PLAN... THE PROMISE...

2025-2026



**"Engage and Motivate Students to
Achieve Excellence"**

123 Price Place
Norcross, GA 30071
678-225-5500
gcpsk12.org/baldwines

Revised 9.8.25

WHAT IS A FAMILY AND COMMUNITY ENGAGEMENT PLAN?

It is a plan that describes how our school will provide opportunities to improve family engagement that will support student learning at school and at home. All students and their families are invited and encouraged to fully participate in the opportunities described in this plan. The school will provide information and as many opportunities as possible for the participation of all family members.

WHAT IS A SCHOOL-FAMILY PROMISE?

It is a written agreement that outlines how the school, the students, and the family will work together to ensure your child's academic success. An effective School-Family Promise contains the following elements:

- Clear learning goals that are linked to the school's improvement plan
- Specific skills students will learn during the year
- Strategies that staff, families, and students will use to improve student learning
- Ways to extend learning at home
- Methods teachers and family members will use to communicate about student progress
- Opportunities for family members to observe and participate in the classroom
- Jointly-developed by families, school staff, students, community business partners, and other stakeholders during our Planning Meeting
- Reviewed and revised throughout the year
- Opportunities to review the School-Family Promise will be provided to families during fall and spring Parent Teacher Conferences.

LET'S TALK

Baldwin Elementary is committed to frequent two-way communication with families about student learning. Some of the ways we can foster effective communication include: Parent/Teacher Conferences, ParentSquare, phone calls, and email. *If you need interpretation or translation services, please contact: Sol Maya at 770-822-6407.*

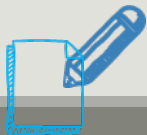
ACTIVITIES TO BUILD OUR PARTNERSHIP

Baldwin Elementary is proud to partner with our families through school wide events and workshops throughout the year. Please joins us for the following events and more!

- Curriculum Night
- Annual Title 1 Meeting
- Fall & Spring Parent Conferences
- Trunk or Treat
- Humanities Night
- Literacy Night
- Math Night
- Norcross Cluster Innovation Showcase
- Technology Parent Workshops
- Literacy Parent Workshops
- Kindergarten Transition Meeting



Review The School-Family Plan...The Promise... document with families and gather written input for revisions.



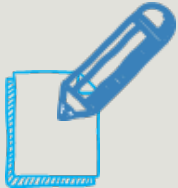
Please add your comments/suggestions to the Local School Planning Meeting Input Form under the section labeled **The Plan... The Promise.**



Budget & Resources

Understanding how Title I funds are allocated helps ensure resources align with our school's greatest needs. Let's explore our budget and prioritized wish list together.

Our School's Title I Budget and Prioritized Wish List

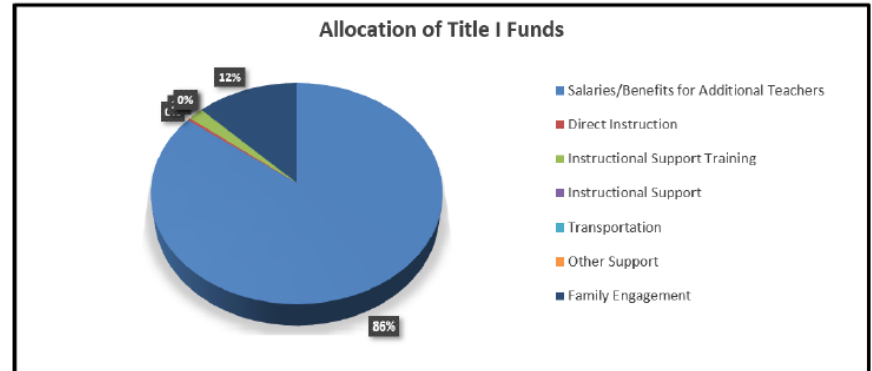


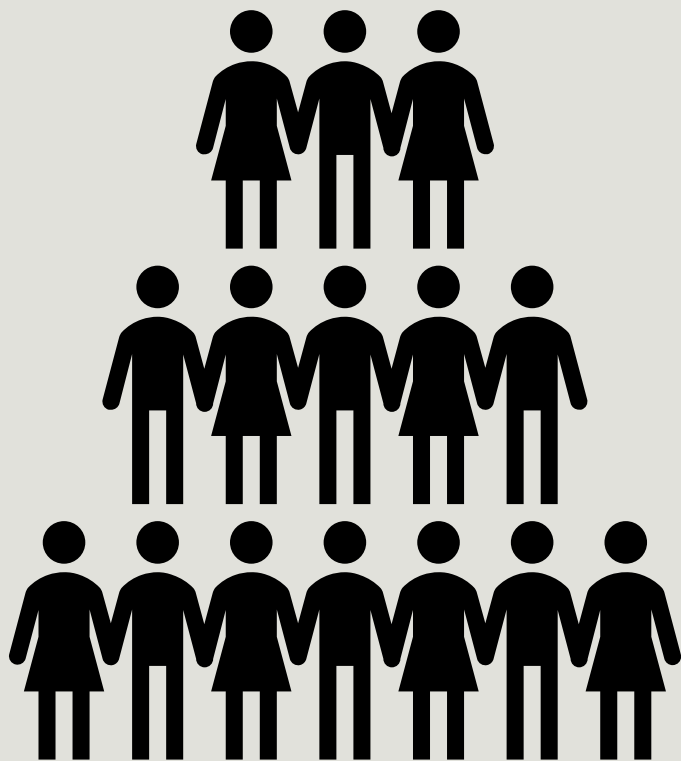
*Families, please add your comments/suggestions to the Local School Planning Meeting Input Form under the section labeled **Budget and Prioritized Wish List***



Baldwin ES TITLE I BUDGET SUMMARY 2025-2026

Budget Category	Amount	Percent of Budget	Use of Funds
Salaries/Benefits for Additional Teachers	\$425,434	85.40%	
Direct Instruction	\$1,760	0.35%	
Instructional Support Training	\$9,300	1.87%	
Instructional Support	\$0	0.00%	
Transportation	\$0	0.00%	
Other Support	\$0	0.00%	
Family Engagement	\$61,675	12.38%	
TOTAL ALLOCATION	\$498,169	100%	



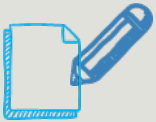


Staff Training

Investing in our staff's professional growth ensures they have the skills, knowledge, and strategies to support every student's success and partner effectively with families.

Building School Staff Capacity - We Need Your Input!

Families, what do you think staff members need to know to better assist you in supporting your child's learning?



Families, please add your comments/suggestions to the Local School Planning Meeting Input Form



GCPS District Input

*Your voice extends beyond our school walls.
Let's explore opportunities to influence district-
level Title I planning and family engagement
initiatives.*

GCPS District Input Form



FEDERAL PROGRAMS – OFFICE OF FAMILY ENGAGEMENT

DISTRICT PLANNING MEETING INPUT FORM 2026 - 2027

School Name: _____

Date: _____

Please return completed form to: _____

TITLE COMPONENT	DO YOU HAVE SUGGESTIONS FOR CHANGES?		SUGGESTIONS <i>(IF YOU CHECKED YES, PLEASE WRITE YOUR SUGGESTIONS FOR CHANGE IN THIS COLUMN)</i>
	Yes	No	
1. GCPS Family and Community Engagement Plan			
2. 1% Set-Aside for Family Engagement Activities			

GCPS Family and Community Engagement Plan



[HOME](#) / [ABOUT US](#) / [DIVISIONS AND TEAMS](#) / [SCHOOL IMPROVEMENT AND OPERATIONS](#) / [DEPARTMENT OF FEDERAL PROGRAMS & COMPLIANCE](#) / [ENGAGE, EQUITY, EMPOWER SERIES](#) / [FAMILY AND COMMUNITY ENGAGEMENT PLAN](#)

Family and Community Engagement Plan



While your student may receive instruction during the school day, we know that a child's first and most important teachers are parents and family members. We know you play an integral role in the education of your child, and we want to encourage and support you to be actively involved in your child's school. We need your input, your suggestions, and your perspective to make decisions about your child's school experience. Additionally, our district receives Title I, Part A funds. Title I, Part A supplemental funds are used to enhance the educational program to meet the needs of each and every child. We use these funds to hire additional teachers in our Title I schools, to purchase technology and resources, and to train school personnel who serve as ambassadors for families and the school community.

[GCPS Family and Community Engagement Plan Video \(English\)](#)

[GCPS Family and Community Engagement Plan Video \(Spanish\)](#)

[GCPS Family and Community Engagement Plan \(Written Document\)](#)



GCPS District Input Form



FEDERAL PROGRAMS – OFFICE OF FAMILY ENGAGEMENT

DISTRICT PLANNING MEETING INPUT FORM 2026 - 2027

School Name: _____ Date: _____

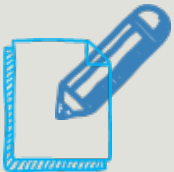
Please return completed form to: _____

TITLE I COMPONENT	DO YOU HAVE SUGGESTIONS FOR CHANGES?		SUGGESTIONS <i>(IF YOU CHECKED YES, PLEASE WRITE YOUR SUGGESTIONS FOR CHANGE IN THIS COLUMN)</i>
	Yes	No	
1. GCPS Family and Community Engagement Plan			
2. 1% Set-Aside for Family Engagement Activities			

GCPS Family and Community Engagement Plan



- Work with families, parents, teachers, school staff and community members to develop a Family and Community Engagement Plan.
- Office of Federal Programs provides support to all Title I schools.
- Survey families for content and effectiveness of Family and Community Engagement Plan.
- Collaborate with federal, state and local programs.
- Building Capacity of Parents
- Building Capacity of School Staff



Families, please add your comments/suggestions to the District Planning Meeting Input Form

1% Family Engagement Set-aside



Title I Family Engagement Budget:

- 1% of the GCPS Title I budget supports family engagement and is equally divided to all Title I schools to partially fund a Parent Instructional Coordinator and/or a Parent Outreach Liaison and/or to fund family engagement at schools.
- Other suggestions?



Families, please add your comments/suggestions to the District Planning Meeting Input Form

Save the Date!

Title I Document Review Period

Your participation doesn't end today! After we incorporate feedback from this meeting, all Title I planning documents will be available for a review period.

Draft Document Review in the Parent Center:

Monday, March 16th

Tuesday, March 17th

Wednesday, March 18th

*Families, please share this information with other families you know who were unable to attend the Title I Planning Meeting.
We need their input!*

