

Lincoln-West High School

Steering Committee Meeting #2

03/13/2026

GROUP #1 ~CV25
Nileys Pool
Modular Homes

Goals → 1. Building + env. to reflect the community - Integrated into the Comm.
 2. Being Green - Welcoming/Friendly - Safe
 3. Work local - trades for students - Spanish Amer. Comm. prog.
 4. Updated Technology
 5. → Lincoln West District → Comp. Approach
 6. → Lifelong learning

Objs. → Does not reflect the community

Concerns → Safety
 → Segregated from the Community

Opps → provide work local programs/contracts
 → Community centric → students/families
 → Community Pride

GROUP #2

- NATURAL LIGHT
- REFLECT the neighborhood's CULTURE/VIBE
- HEALTH CARE CTE lab
- CAFETERIA is a COMMUNAL SPACE
 ⇒ less rigidity
- SPACE THAT IS ACCESSIBLE to the COMMUNITY ⇒ both INDOOR + OUT
- MAKE SURE there is ENOUGH parking
- MAKE SURE the CAFETERIA IS big like Marshall not small like Rhodos
- SAFETY for STUDENTS ⇒ both walking + entering from TRANSPORTATION.
- TRUE ACCESSIBILITY THAT FEELS NATURAL so ALL STUDENTS (esp Medically Fragile) feel a part of the community.

Lincoln - West
 the hyphen is a brand
Group 3

Goals -
 • opportunity to become the "centerpiece" of the Community
 space for life skills
 → kitchen, stove, washer, dryer +
 "we cook, clean, + wash"

Opportunities -
 • Community asset in one central place
 • State-of-the-art tech access
 • multi-purpose
 represent the community we serve
 cafe/learning space/"commons"
 "student center"

Wonderings
 ? are there going to be a green space
 ? versatility of use - adaptability to school programming - college + career readiness
 ? How does the school clinic look like = side by side w/ mobile clinic
 green space
 roof top space

tda **WHAT TYPE OF ENTRY DO YOU ENVISION FOR YOUR SCHOOL?**
INDICATE THE IMAGE YOU PREFER BY PLACING A STICKER WITHIN ITS SPACE

The board displays six architectural renderings of school building entrances. Red dots are placed on the top-left, top-middle, top-right, middle-left, and middle-middle images to indicate preferences.

tda **WHAT BRICK COLORS/COMBINATIONS DO YOU ENVISION FOR YOUR SCHOOL?**
INDICATE THE IMAGE YOU PREFER BY PLACING A STICKER WITHIN ITS SPACE

The board displays six different brick color and pattern samples. Red dots are placed on the top-left, top-middle, middle-left, middle-middle, and bottom-middle samples to indicate preferences.

tda **HOW WOULD YOU INCORPORATE COLOR INTO YOUR SCHOOL?**
INDICATE THE IMAGE YOU PREFER BY PLACING A STICKER WITHIN ITS SPACE

The board displays six architectural renderings showing various ways to incorporate color into school buildings. Red dots are placed on the top-left, top-middle, top-right, middle-left, middle-middle, and middle-right images to indicate preferences.

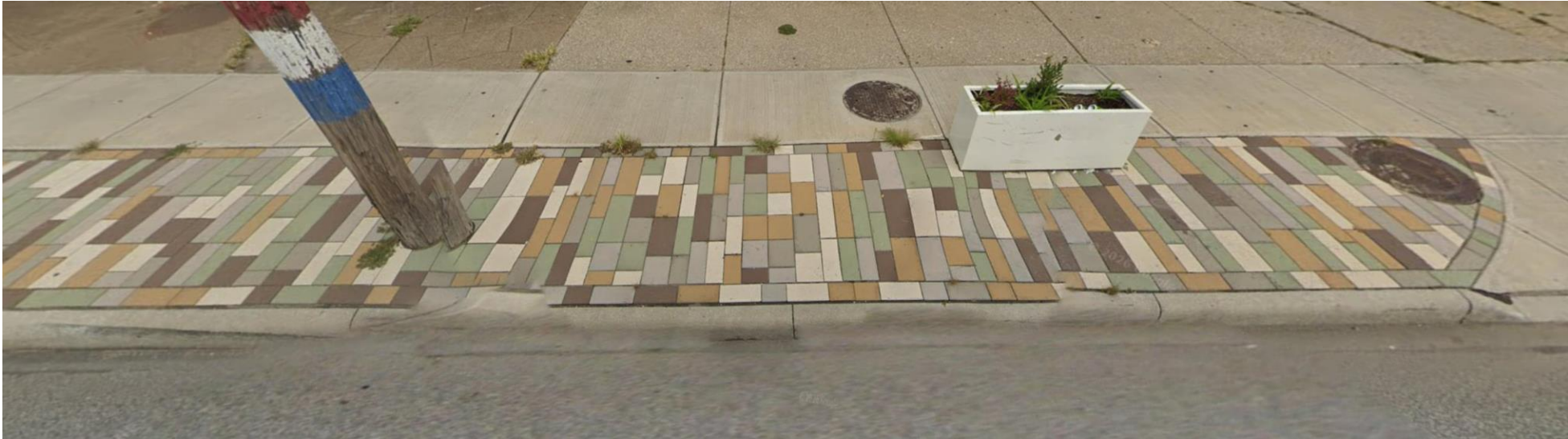
tda **WHAT IS YOUR FAVORITE BRICK PATTERN?**
INDICATE THE IMAGE YOU PREFER BY PLACING A STICKER WITHIN ITS SPACE

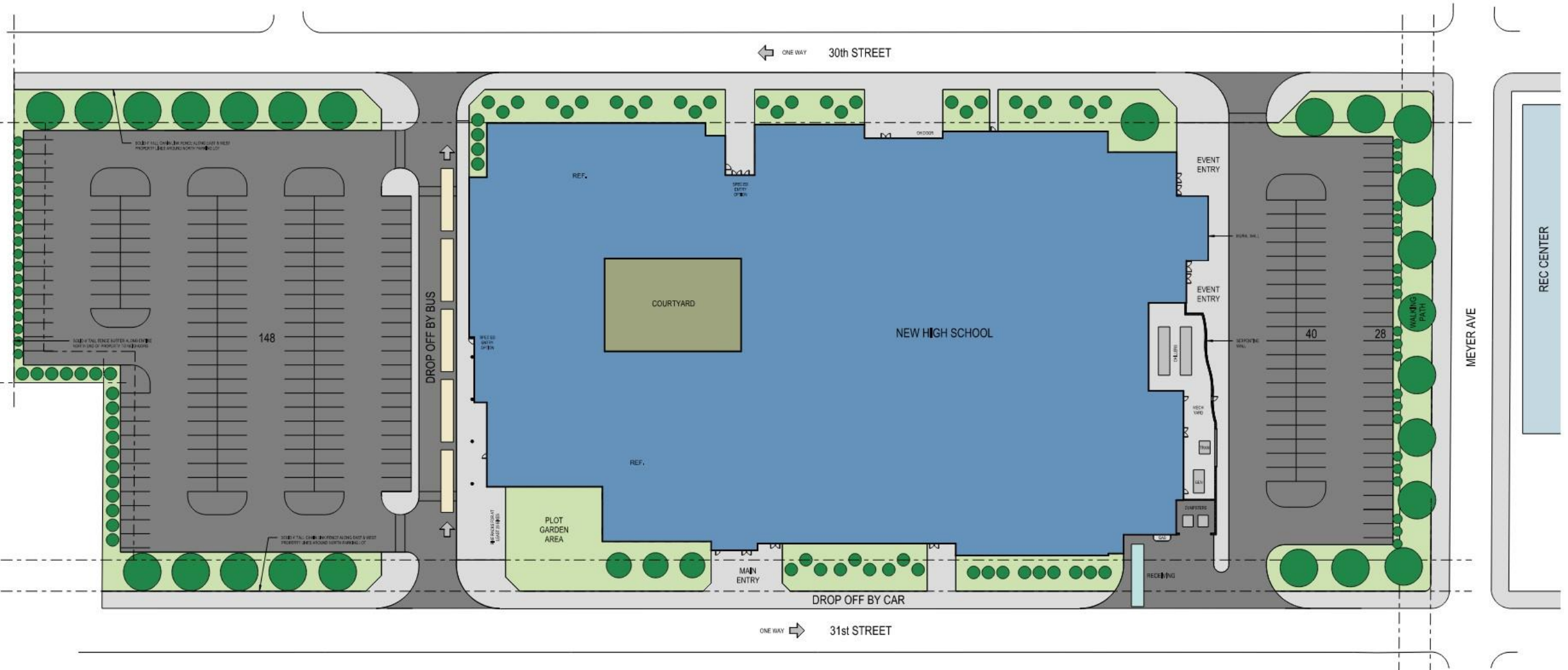
The board displays six architectural renderings of different brick patterns. Red dots are placed on the top-middle, top-right, middle-middle, and middle-right images to indicate preferences.

tda **WHAT TYPE OF WINDOWS DO YOU ENVISION FOR YOUR SCHOOL?**
INDICATE THE IMAGE YOU PREFER BY PLACING A STICKER WITHIN ITS SPACE

The board displays six architectural renderings of different window styles. Red dots are placed on the top-left, top-middle, top-right, middle-left, middle-middle, and middle-right images to indicate preferences.



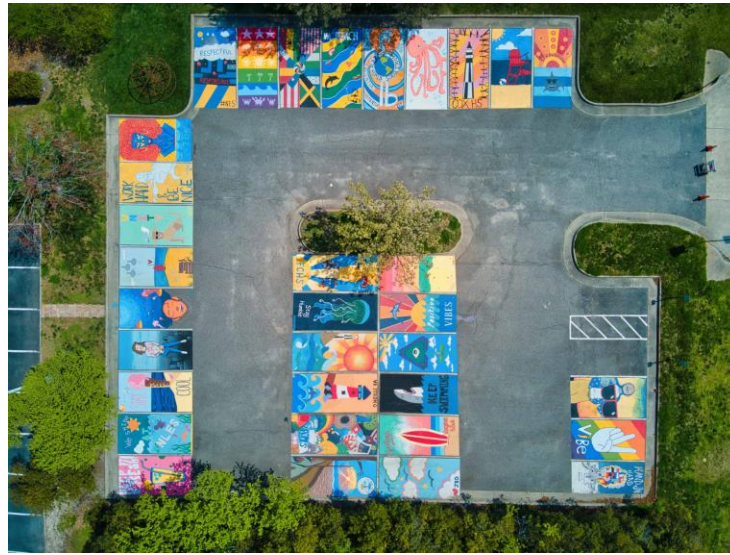


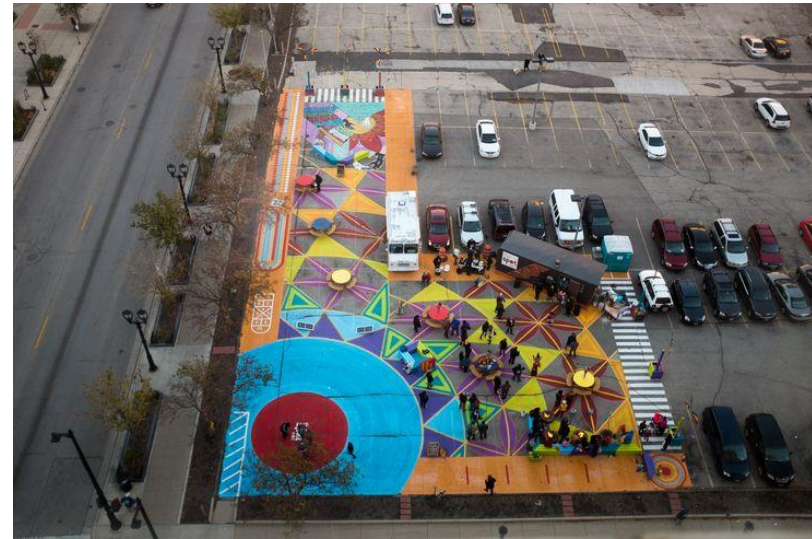



 PARKING COUNT: 215

PRELIMINARY SITE PLAN

Cleveland Metropolitan School District
Lincoln-West High School
March 13, 2026

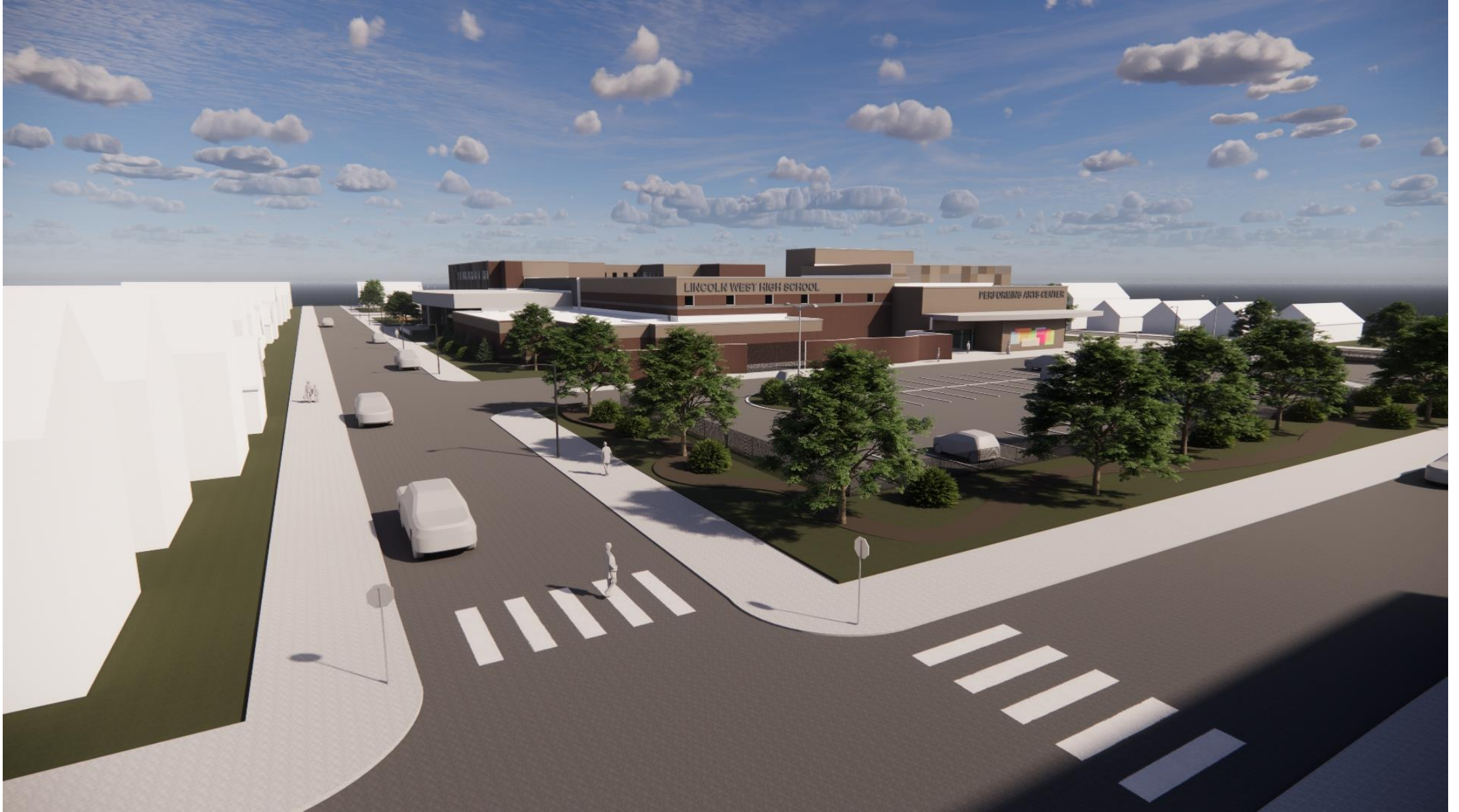






ELEVATED VIEW FROM WEST 30TH AND MEYER AVE

Cleveland Metropolitan School District
Lincoln-West High School
March 13, 2026



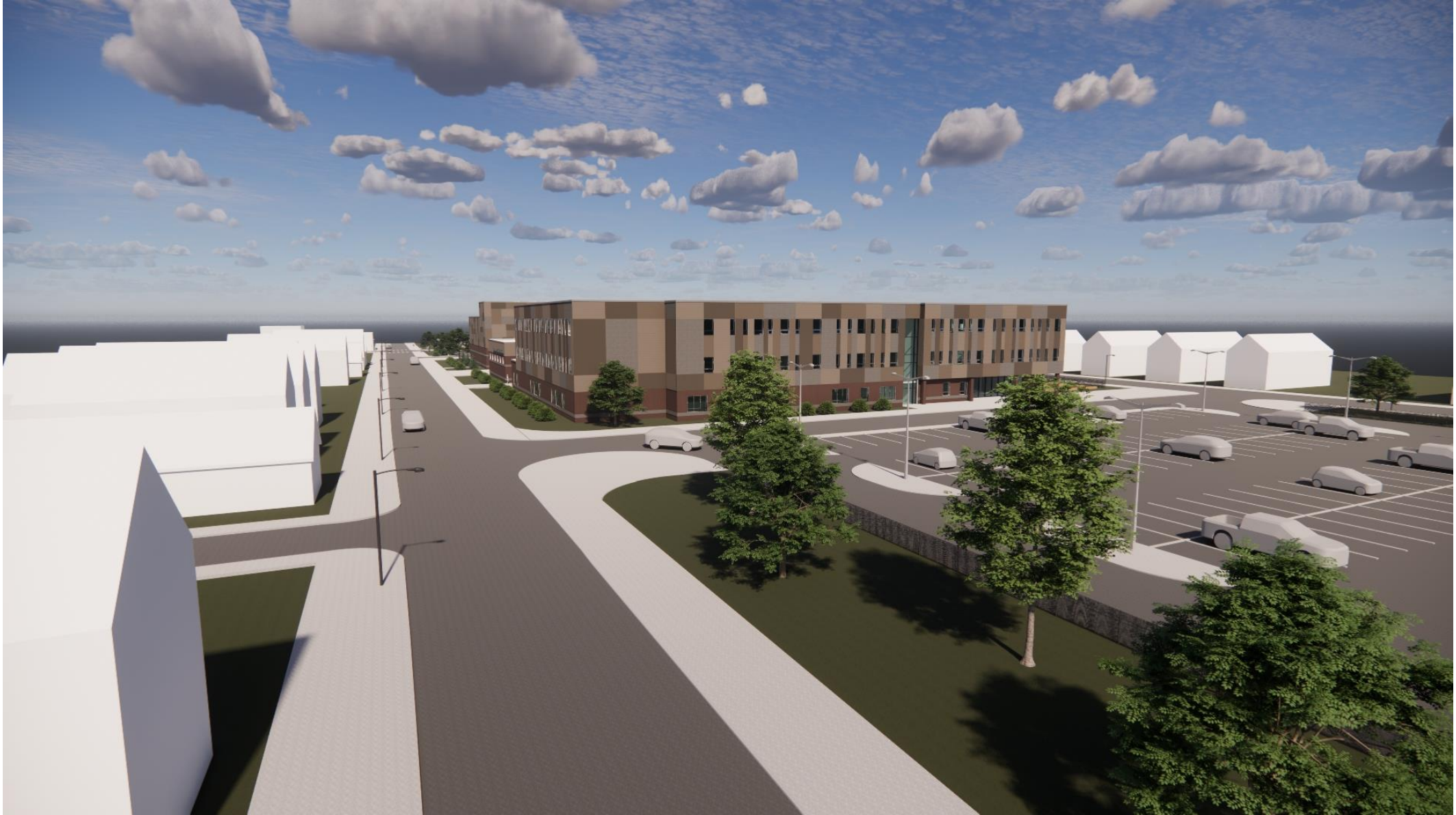
ELEVATED VIEW FROM WEST 31ST AND MEYER AVE

Cleveland Metropolitan School District
Lincoln-West High School
March 13, 2026



ELEVATED VIEW FROM WEST 31ST LOOKING SOUTH

Cleveland Metropolitan School District
Lincoln-West High School
March 13, 2026

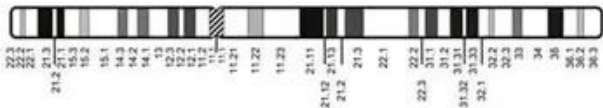


ELEVATED VIEW FROM WEST 30TH LOOKING SOUTH

Cleveland Metropolitan School District
Lincoln-West High School
March 9, 2026



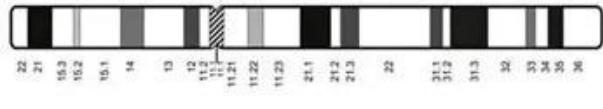
EAST



NORTH



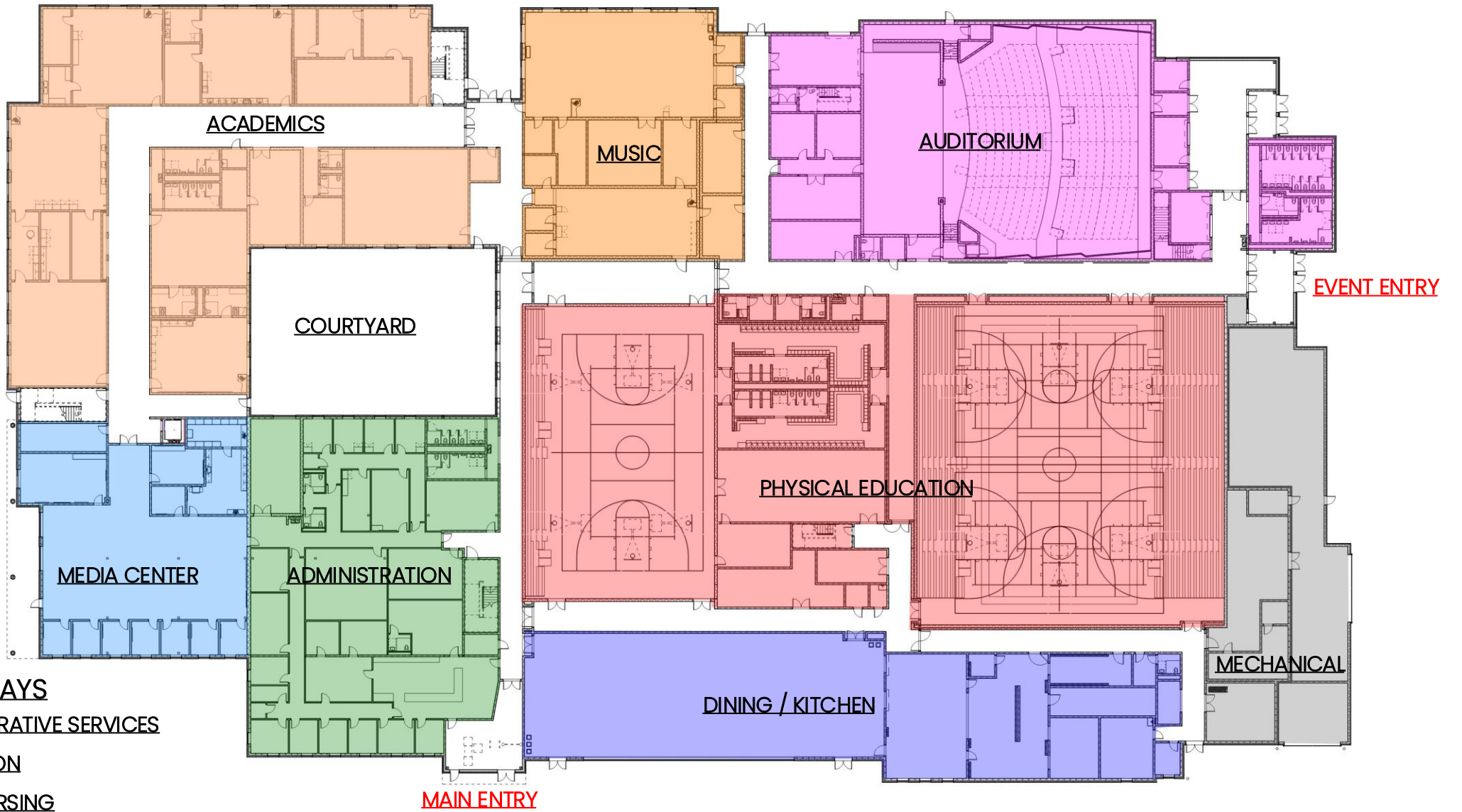
SOUTH



WEST



CHROMOSOME MAP



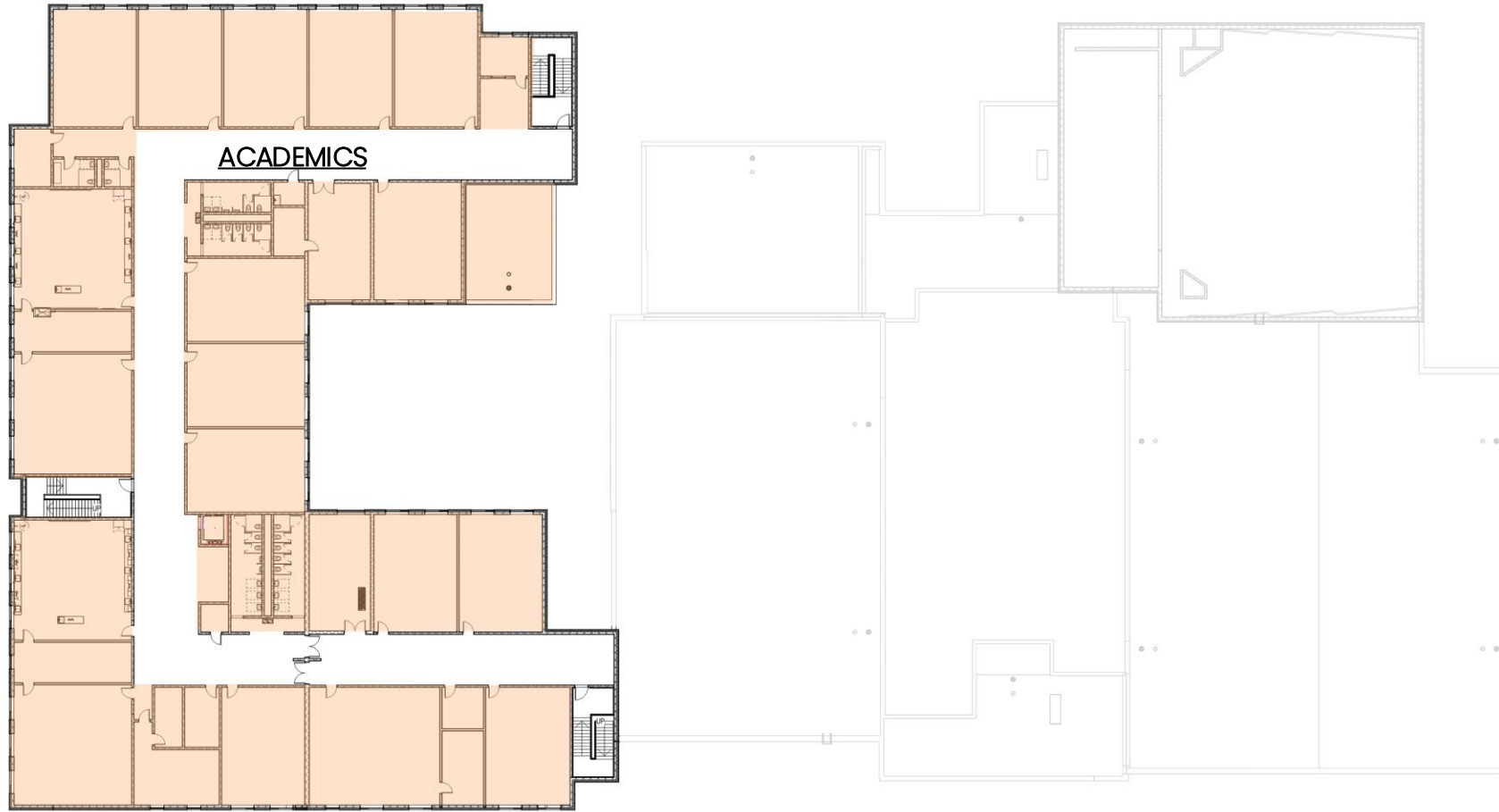
FIRST FLOOR PLAN

Cleveland Metropolitan School District
 Lincoln-West High School
 March 13, 2026



SECOND FLOOR PLAN

**Cleveland Metropolitan School District
Lincoln-West High School
March 13, 2026**



THIRD FLOOR PLAN

**Cleveland Metropolitan School District
Lincoln-West High School
March 13, 2026**



Former Lincoln High School - WPA "The Spirit of Education" Mural



Ohio Cleveland Lincoln High School ...

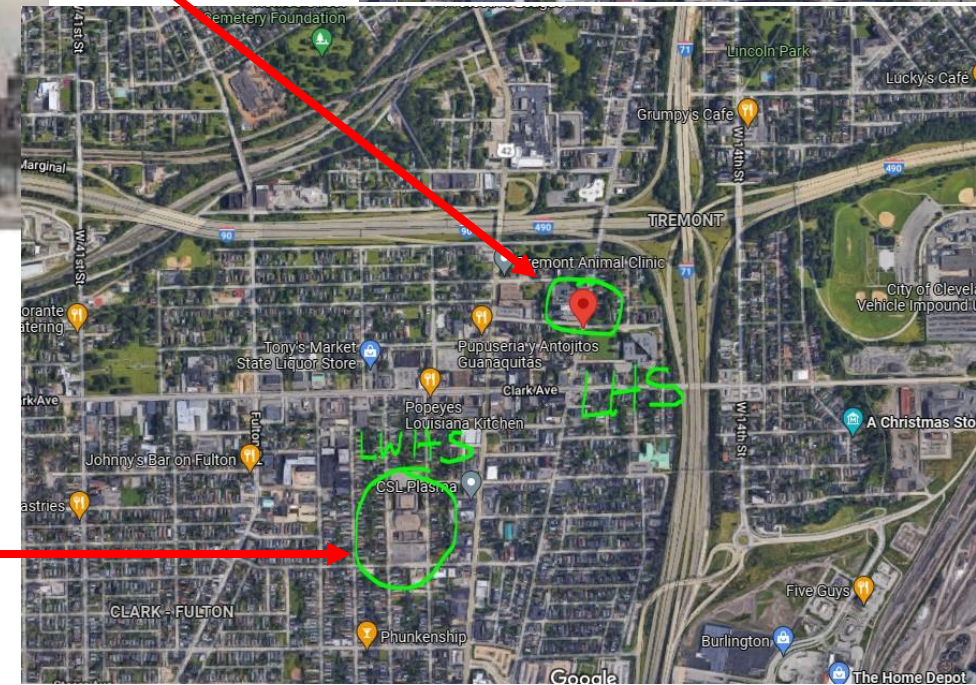
Painted by William Krusoe & assistants in 1939. Displayed in LHS in the 4-story foyer.

Restoration will be by Intermuseum Conservation Association

Former Lincoln High School - Location 3001 Scranton Rd (demolished 1977)



Current Luis Munoz Marin School



Current Lincoln West High School Location

Cleveland Metropolitan School District
Lincoln-West High School
March 13, 2026



Upper section, *The Spirit of Education* was painted in 1939 by William Krusoe for Lincoln High School



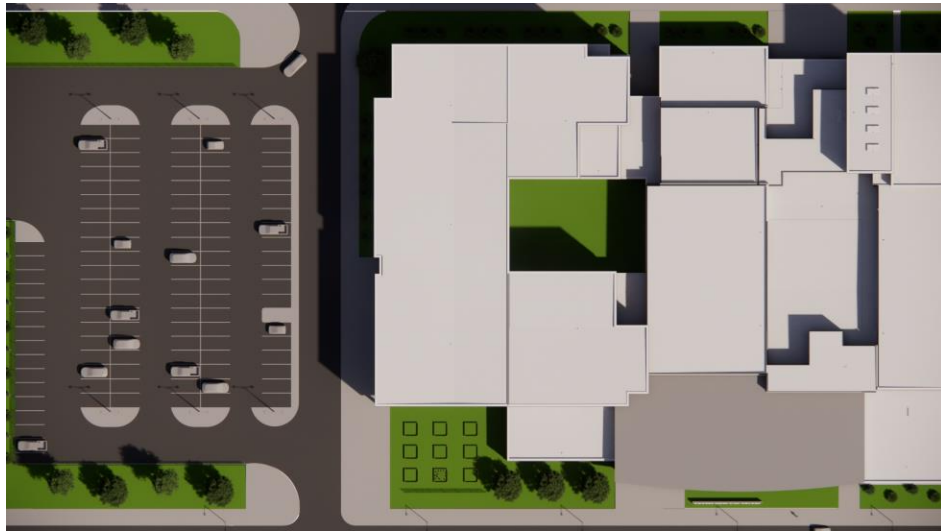
Middle section, *The Spirit of Education* was painted in 1939 by William Krusoe for Lincoln High School



Lower section, *The Spirit of Education* was painted in 1939 by William Krusoe for Lincoln High School

“The Spirit of Education”
1939 by William Krusoe
WPA mural for Lincoln High School
21’ x 33’ in three panels
Located in the main stair hall

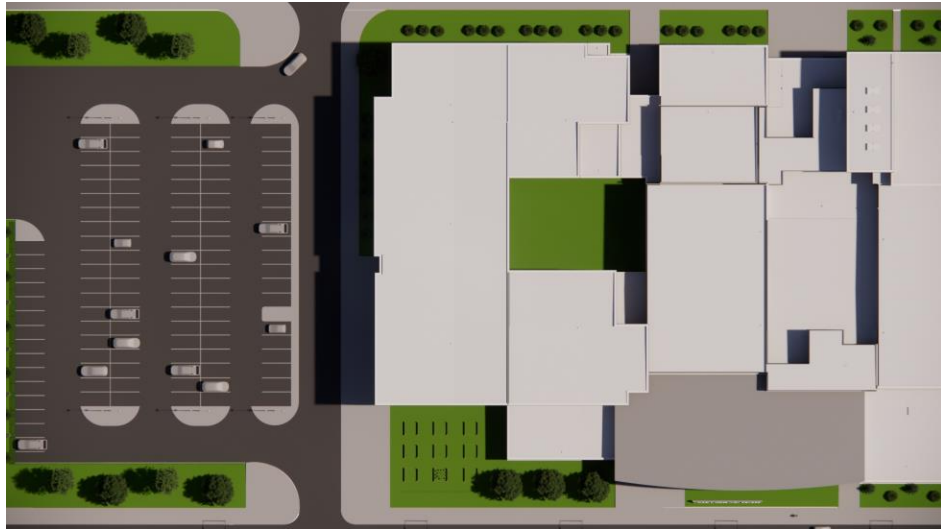
QUESTIONS OR COMMENTS



March / September 3 pm



June 3 pm



March / September 12pm Noon



June 10 am

