

2026-27 Budget Workshop #3: Curriculum & Instruction Special Education & PPS

Ms. Amy Fishkin, Asst. Supt. for Curriculum & Instruction

Dr. Toni Ann Carey, Interim Asst. Supt. for Special Education & PPS



March 11, 2026



AGENDA:

- Collaboration of General Education & Special Education
- Overview of Curriculum & Instruction Department
- Overview of Special Education & PPS Department
- 2026-2027 Budget Priorities for each department
- Review of Proposed Budgets





BCSD Students

WHO WE ARE?

ALL students are...

General Education Students

SOME students receive...

- Tiered support services
- ESOL services

Pupil Personnel Services...

- Section 504 plans
- Experiencing homelessness
- Homebound instruction
- Homeschooling

Special Education Services...

- Students with IEPs
(educational disabilities)

HOW WE LEARN?

- Research-based instructional practices
- Universal Design for Learning
- Accommodations
- Modifications
- Tiered interventions

WHAT WE LEARN?

Core Curriculum:

- Meets NYS standards
- Prepares students for HS graduation

Essential Skills:

- Reading, Writing, Listening, Speaking
- Organization
- Planning
- Collaboration

Our District Priorities driven by PCG Report

2025-2026 Priorities:

- Strengthen Collaboration between General Education and Special Education
- Multi-Tiered Systems of Support (MTSS)
- LRE Continuum and Programming (ICT Expansion)
- Comprehensive Workload Analysis

2025-2026 Additional Focus:

- Audit Transition Plans
- Focus on Progress Monitoring
- Schedule FBA/BIP training
- Build Capacity of TCI certified staff
- Collaborative Master scheduling conversations/meetings
- Set and align SAS expectations
- Continue to improve family engagement
- Special class curriculum



BCSD Priorities for 2026-2027

- Expand continuum in Elementary
- Improve IEP writing
- Continue to improve transition planning
- PD on SMART Goals
- Align supports and services for dually identified students with best practices
- Audit progress reports
- Review and refine 504 plans
- PPS systems & procedures review

Special Education & PPS

- MTSS Systems
- Implementation of UDL supports
- Develop Tier 2/3 SEL/behavior interventions
- Continue to monitor master scheduling

Collaborative

- Sustainability Plan for Year #3 of new K-5 Literacy
- Sustainability Plan for Year #5 of K-5 Bridges in Mathematics
- 6-12 Literacy and Math Curriculum Implementation
- NEW Graduation Measures
 - Financial Literacy and Climate Education
- K-12 Guidance Plan
- Generative AI: Next steps
- Priorities on Curriculum Review Cycle

Curriculum & Instruction

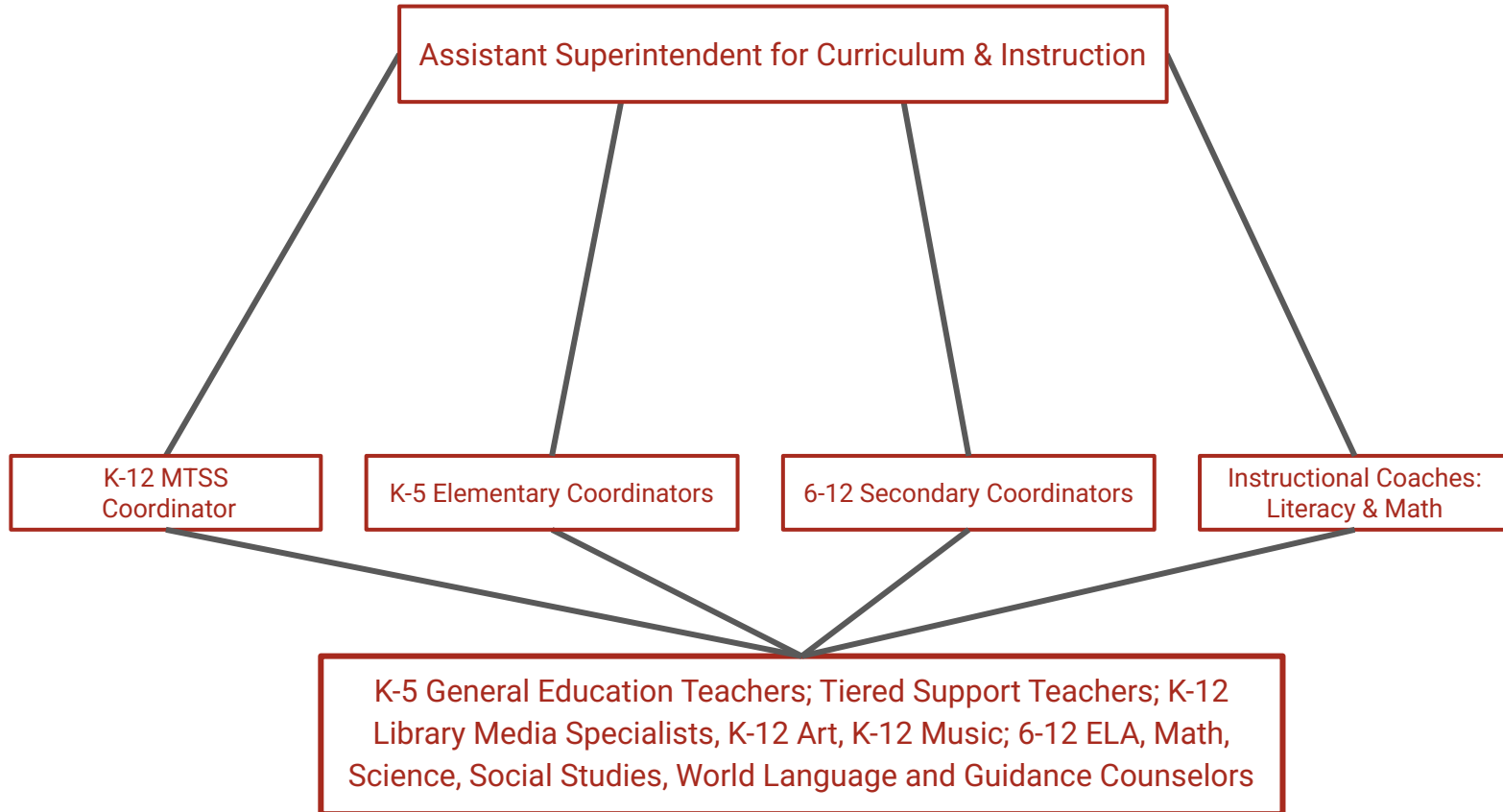
Curriculum & Instruction Department Overview

Ms. Amy Fishkin
Assistant Superintendent of
Curriculum & Instruction



FLHS students design, test and modify water wheels to calculate how much electric energy can be generated from one jug of water.

Current Curriculum & Instruction Leadership Structure



BCSD Curriculum & Instruction Systems & Programs

Assistant Superintendent for Curriculum & Instruction

K-12 Curriculum

K-12 Health & PE

K-12 Fine Arts

K-12 Music & Performing Arts

K-12 RULER

K-12 Library Media & Computer Science

K-12 Assessments

NYSED Standards & Graduation Measures

K-5 Elementary Curriculum

Literacy

Math

Science

Social Studies

6-12 Secondary Curriculum

Guidance Dept.

English Lang Arts

Mathematics

Science & Technology

Social Studies & Business

World Language

AVID Program

MTSS

Tiered Support

MTSS Problem Solving Teams

Data Integration

GRANTS

Title I, II, IV

Pre-K

Professional Development

Technology Integration

Supt. Conf. Days

Leadership Retreat

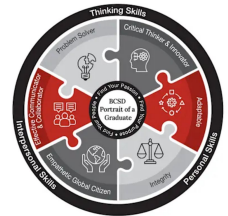
Leadership Learning Walks

Collaboration w/ Staff Dev Ctr

Induction & Mentoring

2026-2027 Budget Priorities for Curriculum & Instruction

- Build upon last year's **7% point increase in K-8 ELA** outcomes by investing in sustained strong literacy curriculum & instruction aligned to SOR
- Build upon **20% point increase in K-8 Math** outcomes since 2022 by investing in ongoing curriculum and professional development to support Mathematics
- Continue prioritizing **K-12 MTSS Action Plan** with a focus on UDL and tier 1 instruction for ALL students in the areas of academics, behavioral, and social emotional needs
- Looking to the Future:
 - BCSD **Portrait of Graduate** Instructional Playbook
 - Examine our **K-12 Guidance Plan** to ensure compliance
 - **NYSED Graduation Measures:** Implementation of Financial Literacy & Climate Education
 - **Generative AI:** Keeping up with current trends and impact on teaching & student learning



2026-2027 Investment in Professional Development

- Mentoring and Induction Program
- In-service courses
- Bedford Staff Development Center
- AI Innovation Team
- Literacy Professional Development
 - LETRS Training
 - Science of Reading & Bilingual Consultants
 - Job-embedded coaching
- Mathematics Professional Development
 - OGAP - LETRS for mathematics (tiered)
 - New B3 Bridges in Mathematics
 - 6-8 New Math materials
- Superintendent Conference Days
- Leadership Retreat & Learning Walks
- New Leader Mentor Circle
- Regional Collegial Circles (Administrators & Coordinators)
- Regional and National Conferences
- Partnership with Manhattanville University
- Summer curriculum work and summer professional learning



Sustain Strong Tier 1 Core Curriculum & Instruction

K-8 Foundational Curriculum:

- K: Heggerty Phonological Awareness
- K-2: UFLI Phonics program
- K-2: Hola Books Phonics program (DLBE)
- K-5: Bookworms Reading & Writing
- K-5: ARC Core Reading & Writing (DLBE)
- K-5: Bridges in Mathematics
- K-5: Science 21
- K-5: BOCES Social Studies curriculum
- K-6: DLBE Program (MKES & FLMS)
 - 50/50 side by side model (K-5)
 - Spanish Language Arts (SLA) and Spanish Social Studies (Gr. 6)
- K-8 Comprehensive Literacy for All

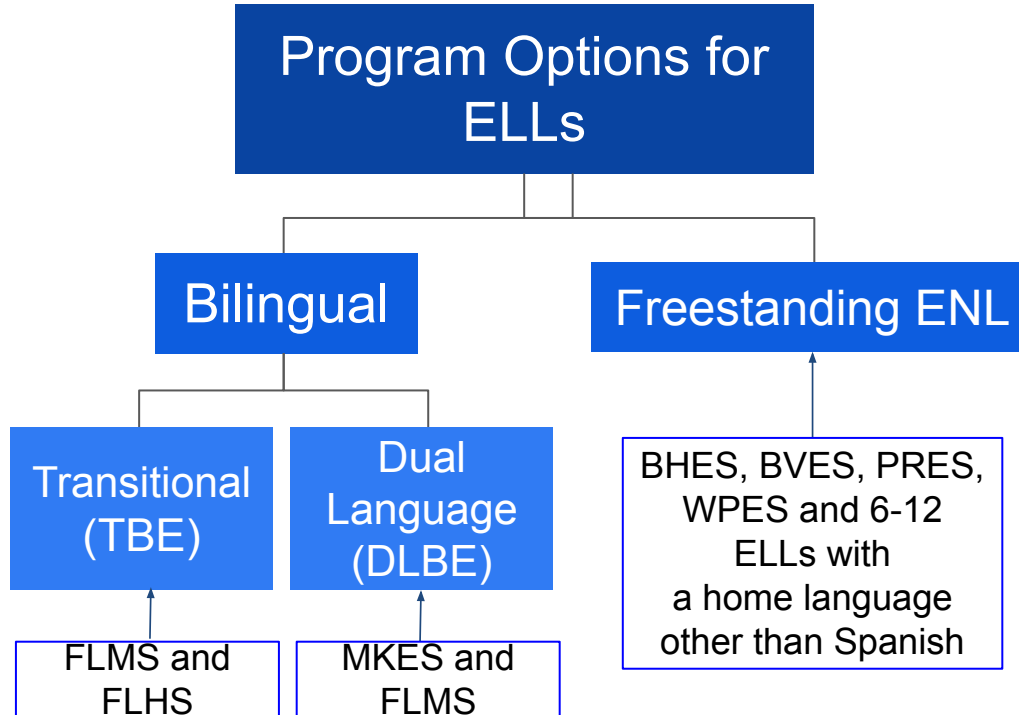
6-12 Secondary Pathways:

- 6-12: ELA courses
- 6-12: World Language courses (Spanish, French, Italian)
- 6-12: Social Studies & Business courses
- 6-12: Math courses (Algebra acceleration offered in grade 8)
- 6-12: Science & Technology courses (Earth Science Regents for all in grade 8)

K-12 Holistic Development:

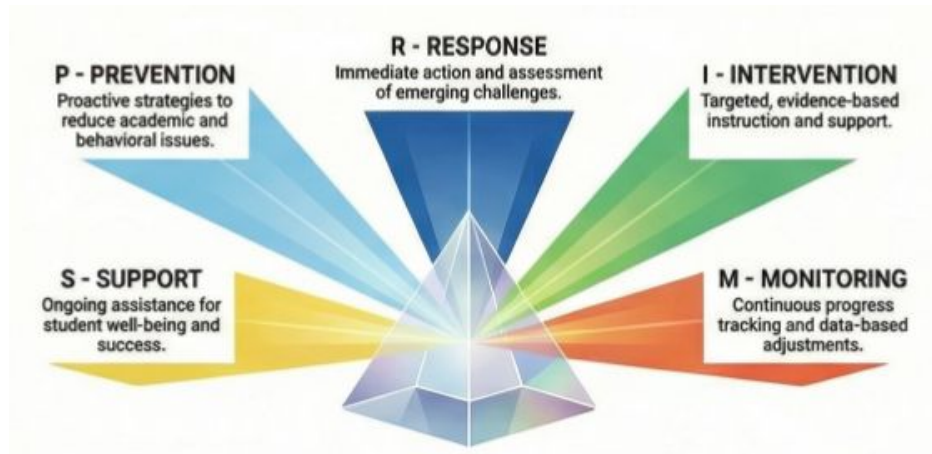
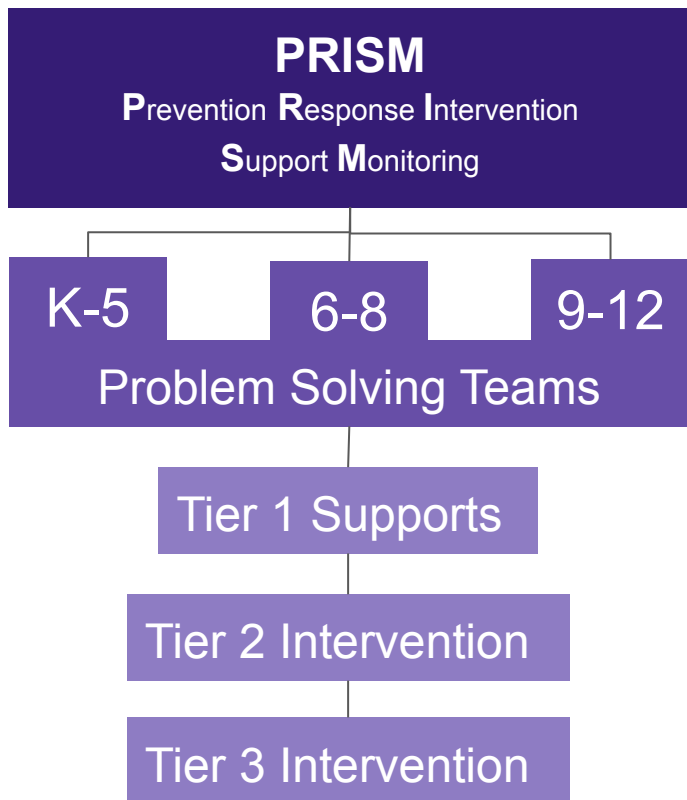
- K-12: Music & Performing Arts courses
- K-12: Physical Education & Health courses
- K-12: Visual Art courses
- K-12 RULER social-emotional framework

K-12 ESOL & Bilingual Programming



Mandated
general
education
services for
ELL-eligible
students

BCSD Multi-Tiered Systems of Supports (MTSS)

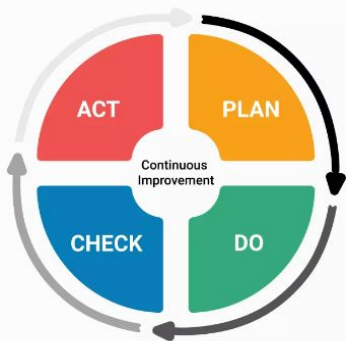


2026-2027 Maintain Robust Elective Offerings

- Accounting
- Anatomy & Physiology
- Animal Behavior
- Animation Program (Levels 1, 2, 3)
- AP courses (20)
- ASPIRE Program
- AVID Elective (grades 7-12)
- BOCES Career/Technical Education (CTE)
- Business Communication
- Creative Writing
- Developmental Psychology
- Dual Enrollment Courses
- Engineering Design & Development
- Entrepreneurship
- Epidemiology and Public Health
- Fashion Program (Levels 1, 2, 3)
- Film Writing & Analysis
- Fitness for Life
- History of Wall Street & Investing
- Honors Level courses
- Marketing
- Project Lead the Way (PLTW)
- Science Research
- SLT: Society, Literature & Truth
- Public Speaking & Speech Writing
- SUPA Forensics (Syracuse)
- Science of Natural Disasters (SUNY Oneonta)
- Principles of Engineering (RIT)

BCSD 5-Year Curriculum Review Cycle 2025-2029

Focus on 5-Year Curriculum Review Cycle



	Phase 1 Study & Plan	Phase 2 Develop	Phase 3 Implement	Phase 4 Evaluate	
Description	Review achievement data, current curriculum materials & appropriate standards. Research best practices. Study available curriculum materials. Select new materials, if appropriate. Plan pilot and implementation.	Provide training and PD as needed. Begin implementation process of any new instructional materials. Collect evidence of student learning and impact of curriculum. Revise and refine in “real time.”	Provide ongoing support for implementation. Collect evidence of student learning. Revise scope & sequence. Update Curriculum Maps. Assist with ongoing PD.	Provide ongoing support for implementation. Collect evidence of student learning. Update scope & sequence as needed. Assist with ongoing PD.	Monitor overall implementation. Evaluate and reflect upon success of student learning. Continue revisions to curriculum scope & sequence. Prepare for Phase 1.
2024-2025	6-12 Literacy/ELA K-12 PE/Health	K-5 Literacy/ELA 6-12 World Languages	K-5 Mathematics K-12 SS/Business	K-12 Science K-12 CS & DF K-12 RULER/SEL	6-12 Mathematics K-12 VPA Tri-States Follow-up
2025-2026 NEW Earth & Space and Life Science: Biology Regents	6-12 Mathematics K-12 VPA	6-12 Literacy/ELA K-12 PE/Health	K-5 Literacy/ELA 6-12 World Languages	K-5 Mathematics K-12 SS/Business	K-12 Science K-12 CS & DF K-12 RULER/SEL Tri-States NEW Visit
2026-2027 NYSED Graduation Measures	K-12 Science K-12 CS & DF K-12 RULER/SEL	6-12 Mathematics K-12 VPA	6-12 Literacy/ELA K-12 PE/Health	K-5 Literacy/ELA 6-12 World Languages	K-5 Mathematics K-12 SS/Business
2027-2028 NYSED Graduation Measures (one diploma/new credit requirements)	K-5 Mathematics K-12 SS/Business	K-12 Science K-12 CS & DF K-12 RULER/SEL	6-12 Mathematics K-12 VPA	6-12 Literacy/ELA K-12 PE/Health	K-5 Literacy/ELA 6-12 World Languages Tri-States Follow-Up
2028-2029 NYSED Graduation Measures (one diploma/new statewide transcript)	K-5 Literacy/ELA 6-12 World Languages	K-5 Mathematics K-12 SS/Business	K-12 Science K-12 CS & DF K-12 RULER/SEL	6-12 Mathematics K-12 VPA	6-12 Literacy/ELA K-12 PE/Health Tri-States NEW Visit

Breakdown of Curriculum & Instruction 2026-2027 Budget Codes

Description	2023-24	2024-25	2025-26	2026-27		
	Actual	Actual	Budget	Proposed Budget	\$ Delta	% Delta
BOCES - Curriculum Development	142,591	302,743	145,500	145,500	0	0.00%
Other (Conferences, Supplies & Subscriptions)	9,013	14,939	19,200	18,250	(950)	(4.95%)
2010 - Curriculum Development & Supervision	\$151,604	\$317,682	\$164,700	\$163,750	(\$950)	(0.58%)



2010 - Curriculum Development & Supervision

Breakdown of Curriculum & Instruction 2026-2027 Budget Codes

Description	2023-24	2024-25	2025-26	2026-27		
	Actual	Actual	Budget	Proposed Budget	\$ Delta	% Delta
BOCES - Inservice Training <i>(Reduction in Literacy Consultants)</i>	213,376	74,871	200,000	124,000	(76,000)	(38.00%)
Conference/PG & D/Supplies	22,843	37,105	44,900	26,100	(18,800)	(41.87%)
Professional Services <i>(Increase: Math PD training for new curriculum materials)</i>	101,340	199,643	183,000	199,500	16,500	9.02%
2070 - Inservice Training-Instruction	\$337,559	\$311,619	\$427,900	\$349,600	(\$78,300)	(18.30%)



2070 - Inservice Training-Instruction

Breakdown of Curriculum & Instruction 2026-2027 Budget Codes

Description	2023-24	2024-25	2025-26	2026-27		
	Actual	Actual	Budget	Proposed Budget	\$ Delta	% Delta
BOCES - Private School Textbooks	16,646	20,774	45,000	45,000	0	0.00%
*Instructional Supplies & Textbooks	299,429	805,586	371,000	446,000	75,000	20.22%
Other (Travel, Testing, Mileage)	8,929	11,448	14,600	17,500	2,900	19.86%
Music & Visual Arts (Equipment, Repairs, Printing)	137,773	179,344	182,595	183,195	600	0.33%
2110 - Teaching Instructional Supplies (including Music & Visual Arts)	\$462,777	\$1,017,152	\$613,195	\$691,695	\$78,500	12.80%

***Instructional Supplies:** 26-27 increase is a reflection of actual costs for literacy consumable materials, in addition to new version B3 Bridges in Mathematics materials and new grades 6-8 math materials



2110 - Teaching Instructional Supplies (including Music & Visual Arts)

Displaying Only Budget Codes Overseen By C&I

Curriculum & Instruction Proposed Budget 2026-2027

Description	2023-24	2024-25	2025-26	2026-27		
	Actual	Actual	Budget	Proposed Budget	\$ Delta	% Delta
2010 - Curriculum Development & Supervision	\$151,604	\$317,682	\$164,700	\$163,750	(\$950)	(0.58%)
2070 - Inservice Training-Instruction	\$337,559	\$311,619	\$427,900	\$349,600	(\$78,300)	(18.30%)
2110 - Teaching Instructional Supplies, Music & Visual Arts	\$462,777	\$1,017,152	\$613,195	\$691,695	\$78,500	12.80%
Total:	\$951,940	\$1,646,453	\$1,205,795	\$1,205,045	(\$750)	(0.06%)

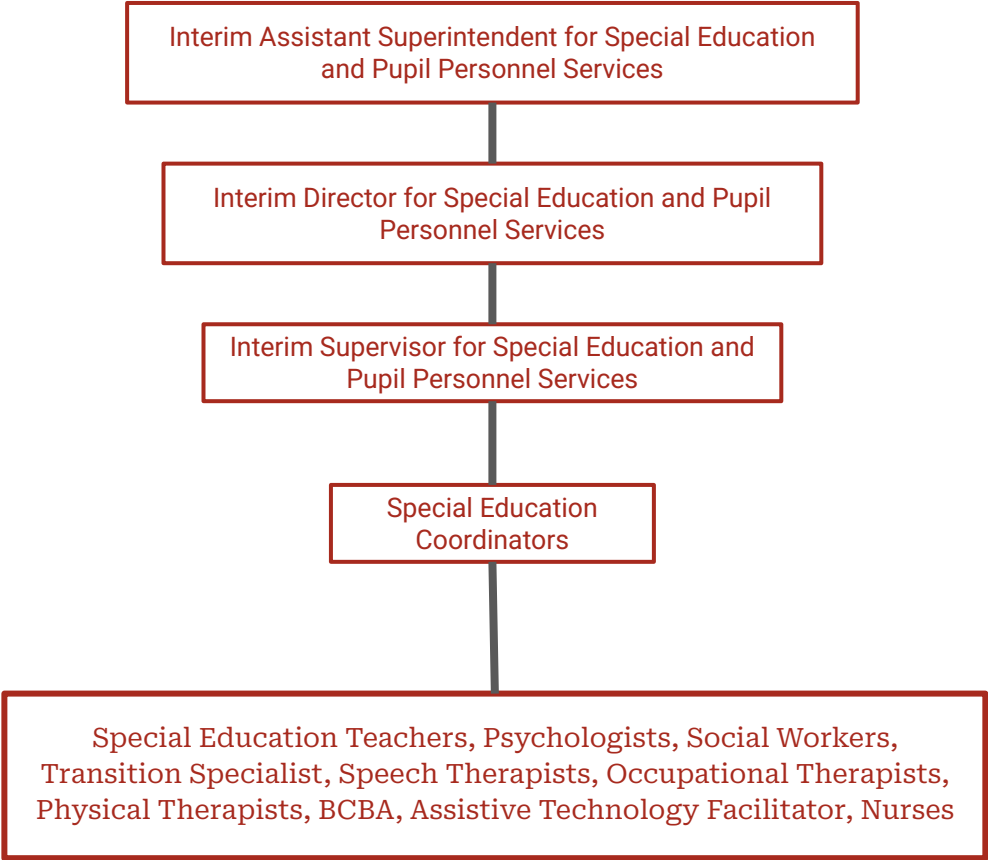
Special Education & PPS Department Overview

Dr. Toni Ann Carey
Interim Assistant Superintendent of
Special Education & PPS



Best Buddies Club Event

Current Interim Leadership Structure through June 2026



Current Special Education & PPS Staff

Special Education Teachers	50
Psychologists /Social Workers	19
Speech and Language Pathologists	11
Occupational Therapists	6
Physical Therapists	3
Board Certified Behavior Analyst	1
Transition Specialist	1
Assistive Technology Facilitator	1
CPSE Chairperson	1
Teaching Assistants	36
Job Coaches	2
Aides	69
Nurses	7 (and a float nurse)

Current Student Services Information (as of Oct. 2025)

Year	Total Number of Students with 504 Plans	Total Number of Classified Preschool Students	Total Number of Classified School Age Students	Number of Classified School Age Students Placed Out of District
2021-2022	156	93	558	25
2022-2023	154	107	597	30
2023-2024	151	102	604	23
2024-2025	144	94	642	35
2025-2026	179	71	631	29

BCSD Continuum of Services

Least Restrictive

Most Restrictive

Related Services Only

Consultant Teacher
Direct/
Indirect

Resource Room

Integrated Co-Teaching

Special Class
12:1:1 ELA
and/or Math

Special Class
12:1:2

Special Class
8:1:3

Out of District Placement

Related Services

Speech, OT, PT, Counseling, Social Skills or Specialized Reading Instruction, NEST, KEA



Program Highlights

Specialized Reading Instruction

This service is provided to students with reading disabilities and is available K-12. This service is provided in small groups and uses the Orton Gillingham approach to remediate decoding and encoding weaknesses. Specialized Reading Instruction can and often will be serviced in multi-grade groupings in order to homogeneously group students based on their phonetic levels and needs.

Summer Reading Bootcamp

Students in grades 1-12 who receive specialized reading instruction during the school year are invited to attend a 4 week summer bootcamp program. Students are provided a one hour, small group reading session aimed to prevent summer slide for our struggling readers.

Program Highlights continued

Navigating Emotional Supports Together (NEST) at FLMS

This service provides emotional, behavioral, family, and community support to students who present with various emotional and behavioral difficulties, in order to allow them to access learning in the school environment – both in and out of the classroom. NEST is not a self-contained program, thus, students attend general education (mainstream) classes and/or special-education classes such as SAS, Co-Teach or Resource Room. Students attend NEST daily, every other day, and/or as needed based upon their identified level of need. All NEST students receive psychological counseling services (group, individual or both).

Keys to Emotional Awareness (KEA) at FLHS

This service helps emotionally fragile students develop coping strategies to be better able to deal with academic, social and emotional situations on a daily basis. A full-time psychologist plays an integral role with students in the program. The program is also staffed by a special education teacher and teaching assistant. Students receive support within the KEA classroom and are fully mainstreamed for subject area instruction.

Hillside Alternative High School Program

The Hillside program is a small, community-oriented, alternative high school program that is part of Fox Lane High School. They serve both classified and non-classified students in an inclusive setting. Hillside is a therapeutic program established to meet the needs of students who thrive in a small, highly structured classroom setting with increased clinical support and a low staff to student ratio.

Current Out-of-District (OOD) Tuition Placements

Placement	Examples	Cost
BOCES	Ex: SWBOCES, PNWBOCES	\$972,333
NYS Approved Day Programs	Ex: Clearview, Summit	\$809,270
Special Act Schools and Other Placements	Ex: Hawthorne Cedar Knolls, NYS School for the Deaf	\$700,915
Other Public Schools/Homebound	Ex: Yorktown Central School District	\$182,900
Total:		\$2,665,418

Out of District Tuition Revenue

New York State allows school districts to charge tuition based off the Nonresident Tuition (“NRT”) rate, or actual costs. The NRT rate is calculated by the New York State Education Department (“NYSED”). The State also allows school districts to charge tuition on the actual costs of educating pupils (Reg. 8 NYCRR part 174) if their accounting records are sufficient enough to calculate such costs.

Beginning in the 2026-27 school year Bedford CSD will charge tuition on the actual costs of educating pupils when appropriate to best maximize revenue. We are currently in the process of analyzing the actual costs per pupil versus the NRT rate.

2026-2027 Budget Priorities for Special Education & PPS

- Continue to offer a robust continuum of special education services to meet the needs of learners
- Provide professional development aligned with the improvement of IEP writing and progress monitoring of goals
- Continue prioritizing social emotional and behavioral services and look for opportunities for expansion



2026-2027 Budget Proposals for Special Education/PPS

1.0 FTE nurse for Fox Lane campus to be split between FLMS and FLHS

- Bedford staffs fewer nurses per student than most comparable districts.
- Regional norms reflect multiple nurses per secondary building, often with added support staff.
- Increasing student medical complexity, chronic health needs, and compliance requirements are driving higher staffing levels across districts.
- Bedford's current staffing model places significant strain on individual nurses and limits flexibility for emergencies, mandated screenings, documentation, and care coordination

1.0 FTE bilingual social worker for FLMS to support all students

- Fill critical gaps in student and family support not fully addressed by existing personnel.
- Provide expertise in navigating social, economic and linguistic challenges

Special Education Proposed Budget 2026-2027

	2023-24	2024-25	2025-26	2026-27		
Description	Actual	Actual	Budget	Proposed Budget	\$ Delta	% Delta
Conference/Travel/Subscriptions	23,886	28,316	43,000	46,700	3,700	8.60%
Professional Services	425,308	598,949	385,000	440,000	55,000	14.29%
Materials & Supplies	58,195	31,270	57,000	67,970	10,970	19.25%
Tuition (Public/Private/Settlements)	2,033,133	2,591,448	2,311,000	2,325,000	14,000	0.61%
BOCES Services	1,635,796	1,700,310	1,925,000	1,820,000	(105,000)	(5.45%)
Total:	\$4,176,319	\$4,950,292	\$4,721,000	\$4,699,670	(\$21,330)	(0.45%)

Pupil Personnel Services Proposed Budget 2026-2027

Description	2023-24 Actual	2024-25 Actual	2025-26 Budget	2026-27 Proposed Budget	\$ Delta	% Delta
2805 - Attendance (Professional Services)	7,065	10,072	10,000	10,000	0	0.00%
2815 - Health Services (Professional Services, Supplies, Health & Welfare Services for Private Schools)	260,191	261,063	204,400	240,400	36,000	17.61%
2825 - Social Work Services (BOCES/Student Assistant Services)	200,654	167,114	166,165	178,000	11,835	7.12%
Total:	\$467,909	\$438,249	\$380,565	\$428,400	\$47,835	12.57%

Thank you! Questions & Discussion

2026-2027 Budget Calendar

Date	Description
January 28, 2026	Budget Work Session #1: Preliminary Budget
February 25, 2026	Budget Work Session #2: Operations & Maintenance, Technology
March 11, 2026	Budget Work Session #3: Curriculum & Instruction, Special Education & Pupil Personnel Services
March 25, 2026	Budget Work Session #4 - Superintendent Budget Presentation & Deliberation
April 8, 2026	Budget Work Session #5 - Budget Deliberations
April 22, 2026	Budget Work Session #6 - Board of Education adoption of the 2026-27 Budget
May 6, 2026	Public Hearing & Regular Board of Education Meeting
May 8, 2026	Budget Notice mailed to residents, including, property tax report card
May 19, 2026	Budget Vote and Election of BOE candidates 7:00 am - 9:00 pm
June 19, 2026	Statewide Budget Re-Vote Day