

Laguna Beach High School

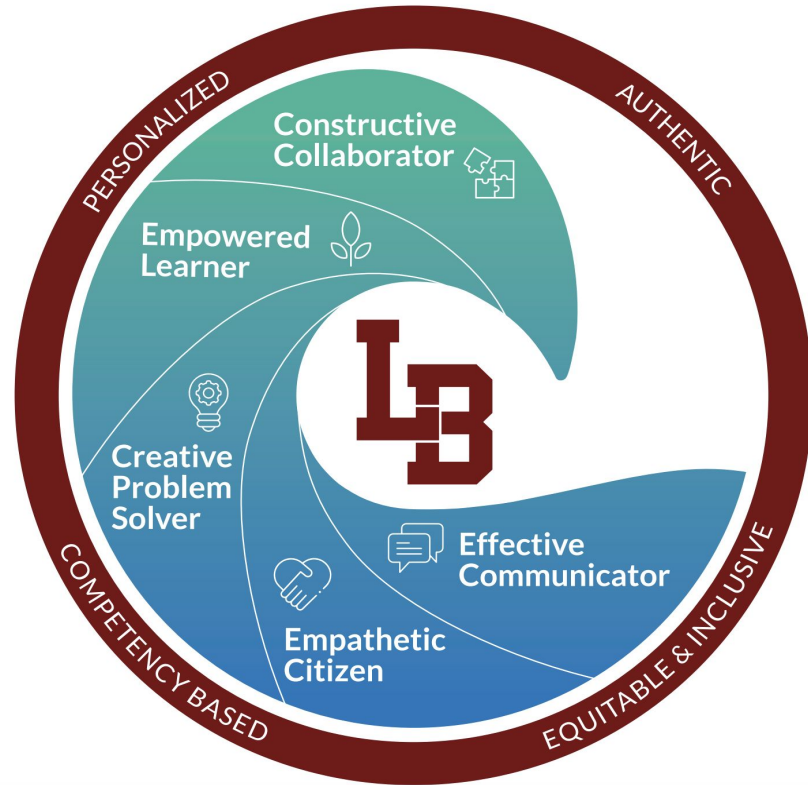
Report to the Board of Education

March 12, 2026

LBHS



2025-2026: THE LEARNER PROFILE



2025-2026: GOALS



GOAL 1

COLLEGE and CAREER-READINESS SKILLS

Multi-Tiered Systems of Support

Extended Learning Opportunities

Career Education

Early Learning Program



**SUPPORT & GROWTH
FOR STUDENTS**



GOAL 2

SOCIAL-EMOTIONAL COMPETENCIES and POSITIVE SELF-IDENTITY

Student Agency

School-Based Mental Health Services

Social-Emotional Support



**STUDENT & STAFF
CONNECTIONS**



GOAL 3

SAFE, EQUITABLE, and INCLUSIVE SCHOOLS

Safety

Equity & Inclusivity

Family Engagement & Involvement



**ENGAGED & EMPOWERED
STUDENTS and PRACTICES THAT
IMPACT SCHOOL CULTURE**

COLLEGE and CAREER READINESS

LBHS CLASS OF 2025

College & Career Outcomes

97%
graduation rate

- **87%** met UC/CSU A-G requirements
- **65%** earned a Golden State Seal Merit Diploma
- **69%** passed one or more AP exams
- **50%** earned a Seal of Biliteracy

85% earned early college credit through CTE articulated courses, AP exams, or dual/concurrent enrollment

81%

enrolled in **one or more AP classes** during high school

73%

enrolled in **one or more CTE classes** during high school

36%

earned college credit through dual or concurrent enrollment during high school



2025-2026 STUDENT ACCESS

CTE

Graphic design, medical field, engineering, computer science, and industry-aligned arts programs.



44%

358 students currently enrolled in a CTE course

DUAL ENROLLMENT

30% of students currently have the opportunity to earn college credit through either dual enrollment or a formal articulation agreement (243)



9.3%

In our CCAP courses (71)

ARTS

30 distinct course and adding two additional courses for 26/27 to offer our students more variety in their access



44%

363 students - 29% taking multiple

2025-2026 SCHOOL-WIDE GOALS

GOAL 1

65% of 11th graders will achieve a Standards Met or Standards Exceeded level as measured by the CASSPP Math assessment.



60%

proficiency 24/25

GOAL 2

Decrease rate of chronic absenteeism to under 10% as measured by Aeries Analytics chronic absentee rate.



12.6%

1st semester chronic absence rate 25/26

GOAL 3

50% reduction in D/F marks from week 6 progress to end of semester



43%

43% reduction in D/F marks from week 6 progress to end of 1st semester 25/26

MTSS - OUTCOME DATA

TUTORIAL INTERVENTION AND SUPPORT

763

individual math students have participated in at least one of 55 targeted math priority support tutorials

ENGLISH/MATH PROGRESS MONITORING



20%

of math intervention students exited at the semester (29/143)



38%

of English intervention students exited at the semester (15/40)

ATTENDANCE INTERVENTION



50%


decrease in chronic tardiness at the end of 1st semester through the implementation of our new tardy support and accountability system


THE EVOLUTION OF TUTORIAL SUPPORT





Spring 2026: First Progress Report (Jan 5 - Feb 27, 2026)

- Most current snapshot of Flex tutorial usage at LBHS

 **71%** of participation driven by student choice — strong ownership of learning

 **14%** targeted academic priority support

 **13%** enrichment and leadership opportunities embedded in the school day

 **1%** administrative requirement

- Teachers intentionally set priority levels to meet diverse student needs
- Data is monitored daily and refined to ensure responsiveness and alignment with academic goals



SCHOOL COUNSELING PROGRAM



NICHOLE ROSA
Counselor A-F



ALEXIS MELE
Counselor G-L



ERIC BANDUCCI
Counselor M-R



ANGELA PILON
Counselor S-Z

ACADEMIC Support & Success
Course Registration, Academic Interventions, Grade Counseling

COLLEGE/CAREER Planning
Letters of Rec, a-g/College Readiness, Career Exploration

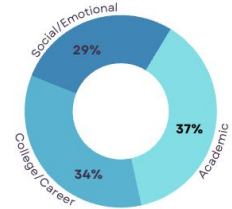
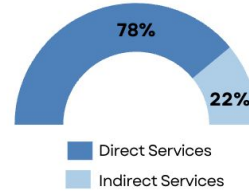
SOCIAL/EMOTIONAL Support
Brief Individual Counseling, Crisis Support, Referral to Resources

Avg Counselor Caseload - 1 : 205



Total School
Counseling
Contacts

2,723



58 Classroom
Lessons

27 Small Group
Sessions

DIRECT CONTACT HIGHLIGHTS

Small Group Contacts	131
Freshman Conference - 1:1	189
Low Grade (D/F) Counseling	94
College/Career Counseling	181
Social/Emotional Counseling	142

INDIRECT CONTACT HIGHLIGHTS

Meetings (SST, IEP, 504)	145
Initial Enrollment Meetings	75
Parent Contacts	262
Out of District Consults	33
Re-Entry Meetings	13

SCHOOL COUNSELING PROGRAM

Our program is data driven, proactive and student & relationship centered.

GRADE LEVEL CONFERENCES

1:1 with Student and Parent(s)
Grades 9, 10, 11



INDIVIDUAL SUPPORT

Counselor Check-ins
All Grades



CLASSROOM LESSONS

Grade-level presentations
All Grades



GRADE COUNSELING

Individual Academic Support
All grades



SMALL GROUPS & TUTORIALS

SEL & Empowerment Groups
All Grades



ACADEMIC SMALL GROUPS

Habits for Success & SOS
Grades 9 and 12



SCHOOL COUNSELING PROGRAM



Counseling Academic Achievement Goal:
Decrease 9th grade D/Fs

9th Grade: Tier 1 Classroom Lessons

SEPTEMBER LESSON #1

Email 101:
Proactive Digital Communication

**B-SS 1. EFFECTIVE ORAL AND
WRITTEN COMMUNICATION SKILLS
AND LISTENING SKILLS**

OCTOBER LESSON #2

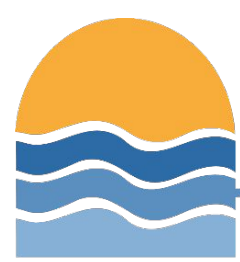
Use of Time:
Organizing and Using
your Time Wisely

B-LS 3. TIME-MANAGEMENT, ORGANIZATIONAL AND STUDY SKILLS

NOVEMBER LESSON #3

Study Skills 101:
Using your Strengths
to Study

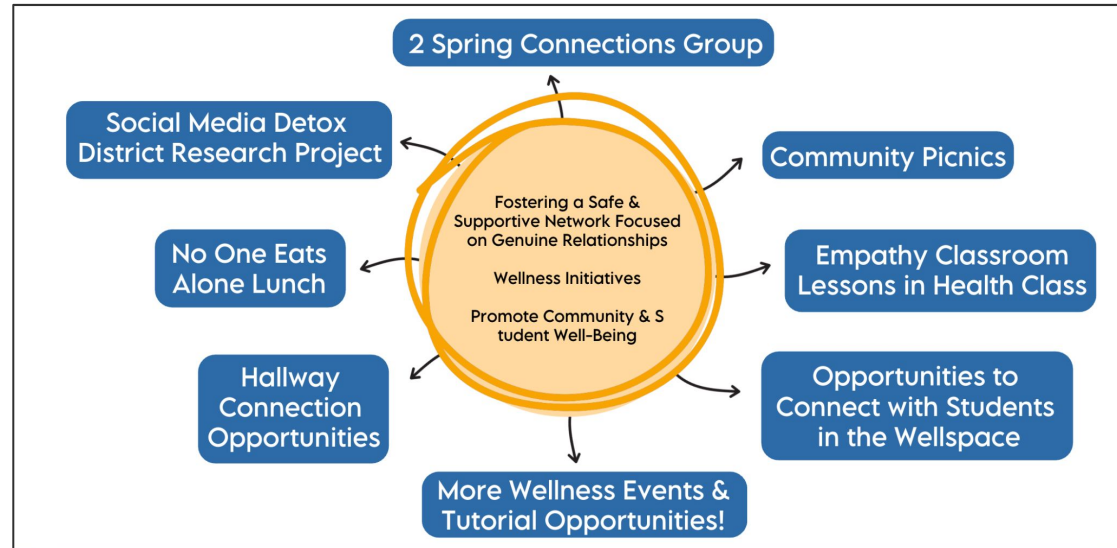
- Individual Counseling Support
- Partnership with teachers & families



STUDENT SUPPORT **collective**

ADVOCACY • WELLNESS • CONNECTION | LAGUNA BEACH HIGH SCHOOL

Wellness Activities & Events ♥ Connections Groups ♥ Classroom Lessons ♥ 1:1 Meetings with Students

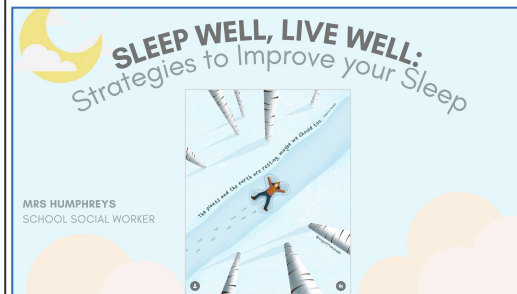
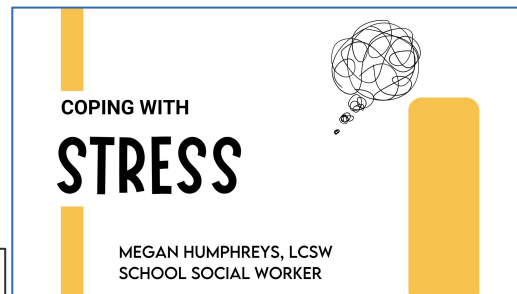
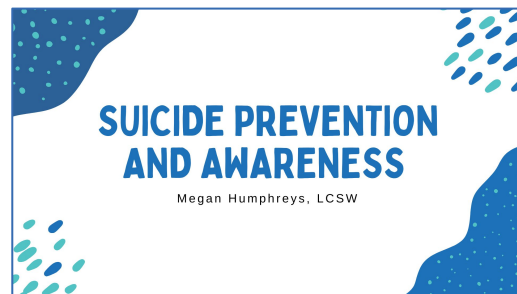


SOCIAL-EMOTIONAL COMPETENCIES & POSITIVE SELF-IDENTITY

67: School Social Worker Referrals

TOP CONCERNS: Relationships (peer & family), Depressive Symptoms, Anxious Symptoms

IN ADDITION: Social Worker integrates proactive mental health education into the classrooms and school-wide; targeted crisis prevention (including suicide, self harm, and threat assessments) and hosts wellness-focused workshops that empower students with practical coping skills and social-emotional resilience.



QUESTIONS?

