

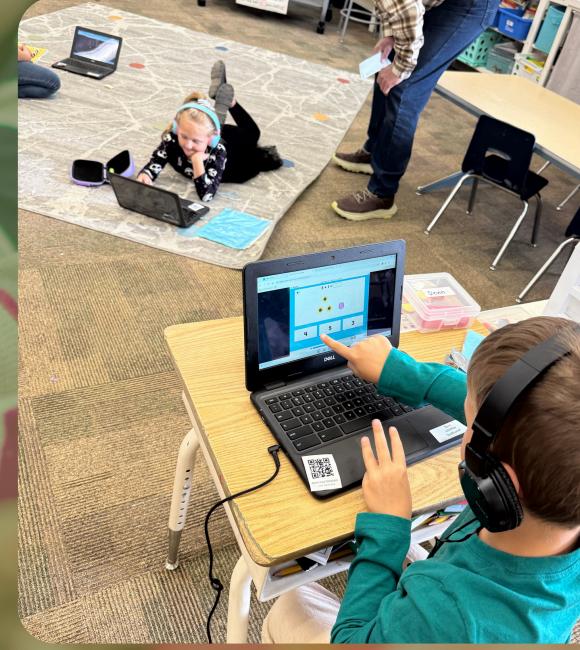
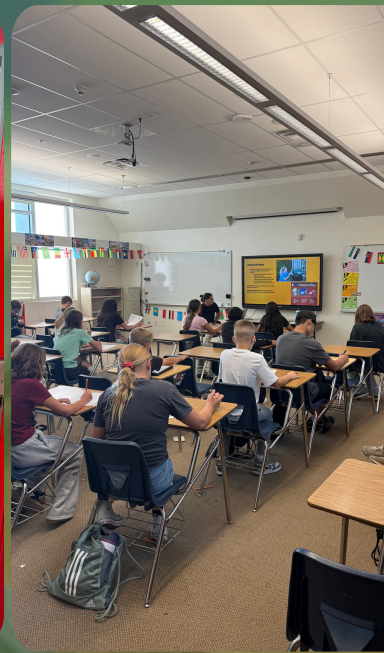
LYON COUNTY SCHOOL DISTRICT

# STATE OF THE DISTRICT



# 2026

“EVERY STUDENT... EVERY CLASSROOM... EVERY DAY”



# TABLE OF CONTENTS:

Welcome Message	03
The Four Domains	04
Board of Trustees and District Leadership	05
School Leadership	06
District Highlights	07
MTSS & PBIS	08
Enrollment & Demographics	09
Budget Information	10
K - 8 District Information	11
9 - 12 District Information	12
WNC Jump Start	13
Graduation Rates	14
Work-Based Learning (WBL)	15
Career & Technical Education (CTE)	16
Appendices	17-20



# WELCOME MESSAGE

The 2026 State of the District Report offers an opportunity to reflect on where Lyon County School District is today and where we are headed together. On behalf of the Board of Trustees, led by Board President Tom Hendrix, and the District Leadership Team, I am proud to share this year's report with our students, families, staff, and community.

Lyon County School District continues to grow as a learning community grounded in opportunity, innovation, and care for students. Serving more than 9,000 learners across 18 schools and multiple learning pathways—including LyOnline—LCSD remains committed to creating environments where students are challenged, supported, and inspired. Across our campuses and programs, dedicated educators and staff work every day to ensure students are not only learning, but discovering who they are and what they can become.

One of the most exciting areas of progress across the district is the expansion of career-connected learning. Through Career and Technical Education (CTE) programs, SchoolLinks, and Jobs for America's Graduates (JAG), students are engaging in hands-on experiences that connect academics to real-world applications. These programs allow students to explore interests, set meaningful goals, and develop skills that prepare them for success beyond graduation—whether that path leads to college, the workforce, or military service.

Our work is guided by a shared vision for student success that emphasizes ownership, connection, discovery, and lifelong learning. Every day, teachers and students collaborate toward meaningful goals that promote academic growth, career readiness, and personal responsibility. This work reflects our district's belief that learning should be relevant, engaging, and designed to meet the needs of all learners.

The success of Lyon County School District is made possible through the collective efforts of our educators, staff, families, and community partners. We invite our community to continue supporting our schools, celebrating student achievements, and engaging in the work of preparing students for a successful future.

Together, we remain committed to ensuring that learning in LCSD reflects our promise to Every Student... Every Classroom... Every Day.

With appreciation,  
Tim Logan  
Superintendent



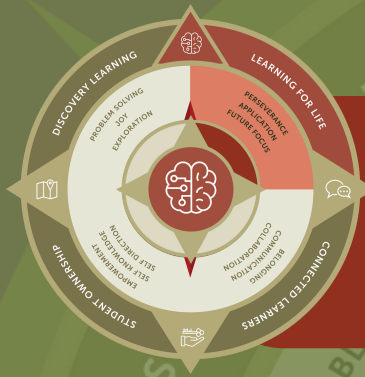
**Tim Logan**  
*Superintendent*

**Tom Hendrix**  
*Board President*



# THE FOUR DOMAINS

In 2021, Lyon CSD began a partnership with an education research, development, and service agency to collect mass input from the community (students, educators, families, and community members) through surveys, interviews, and focus groups. Once a draft was developed, it was shared with students, teachers, and campus and district leaders to test it. The Portrait was finalized at the end of 2022 and introduced to the district in 2023.



## LARNING FOR LIFE

*Perseverance - Application - Future Focus* **"I am building the skills to be a lifelong learner."**

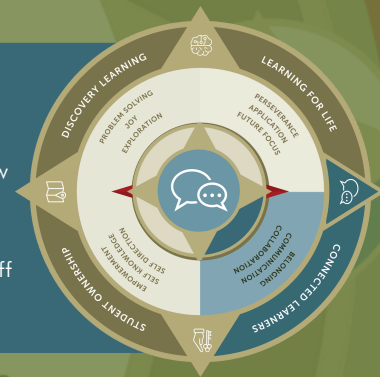
- Students expressed a strong desire to connect knowledge and skills learned in the classroom to life beyond the school and experiences that prepare them for the real-world, including career exposure.
- This domain not only seeks to better support students with their understanding of life as learners past their time in Lyon CSD schools, but also to connect their in-school learning with their lives outside of school, including their day-to-day hobbies, talents, skills and interests.

## CONNECTED LEARNERS

*"I am learning through my relationships with others."*

*Belonging - Communication - Collaboration*

- One of the strengths of the Lyon County community is the relationships that are fostered in schools, and how meaningful and impactful it is when students feel cared for, work in collaboration with each other and with LCSD staff, and feel connected to their community.
- This domain captures students' sense of belonging in their schools, building relationships with peers and staff and building strong skills in communicating across lines of difference and are actively working in the community.



## STUDENT OWNERSHIP

*Empowerment - Self Knowledge - Self Direction* **"I am empowered to own my learning."**

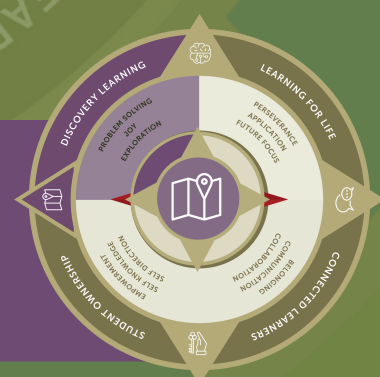
- In developing this domain, we considered the idea of agency, and how agency is demonstrated in learning. Students who felt strongest in their learning had a sense of understanding of how they learn at a metacognitive level and expressed their use of self-awareness strategies to improve their skill-building and knowledge and guide their own learning journeys.
- This domain portrays students in the driver's seat of their learning. It's important that students have a sense of ownership and an understanding that they have choices they can make.



## DISCOVERY LEARNING

*Problem Solving - Joy - Exploration* **"My learning journey helps me discover new things."**

- Students mentioned wanting to bring more of themselves into their learning, including applying their creativity, and exploring their interests.
- This domain seeks to incorporate multiple pathways for students to learn, hands-on learning opportunities, problem-solving and critical thinking skills, as well as joy, choice and love of learning through exploration and self-awareness.





# BOARD OF TRUSTEES



**TOM HENDRIX**  
BOARD PRESIDENT



**DAWN CARSON**  
BOARD CLERK



**DARIN FARR**  
TRUSTEE



**ELMER BULL**  
TRUSTEE



**KALLIE DAY**  
TRUSTEE



**SHERRY PARSONS**  
TRUSTEE



**JAMES WHISLER**  
TRUSTEE

# DISTRICT LEADERSHIP



**TIM LOGAN**  
SUPERINTENDENT



**DR. STACEY GRIFFIN-COOPER**  
DEPUTY SUPERINTENDENT



**BILLIEJO HOGAN**  
EXEC. DIRECTOR - HUMAN RESOURCES



**HEATHER MOYLE**  
EXEC. DIRECTOR - EDUCATIONAL SERVICES



**RACHEL STEWART**  
EXEC. DIRECTOR - SPECIAL SERVICES



**JIM GIANOTTI**  
EXEC. DIRECTOR - EDUCATIONAL SERVICES



**HARMAN BAINS**  
EXEC. DIRECTOR - OPERATIONS



# SCHOOL LEADERSHIP



**VIRGINIA RICHARDSON**  
COTTONWOOD  
ELEMENTARY  
SCHOOL



**CHASE WOODFORD**  
DAYTON  
ELEMENTARY  
SCHOOL



**KENT JONES**  
EAST VALLEY  
ELEMENTARY  
SCHOOL



**JAMIE HENDERSON**  
FERNLEY  
ELEMENTARY  
SCHOOL



**RACHEL HANSEN**  
RIVERVIEW  
ELEMENTARY  
SCHOOL



**ERIN KORF**  
SILVER STAGE  
ELEMENTARY  
SCHOOL



**CORINNE BURNS**  
SUTRO  
ELEMENTARY  
SCHOOL



**SHANNON COOMBS**  
YERINGTON  
ELEMENTARY  
SCHOOL



**CHANEN CROSS**  
LYONLINE  
DISTANCE  
EDUCATION



**KEVIN KRANJCEC**  
DAYTON  
INTERMEDIATE  
SCHOOL



**BLAKE COOPER**  
FERNLEY  
INTERMEDIATE  
SCHOOL



**STEVE HENDERSON**  
SILVERLAND  
MIDDLE  
SCHOOL



**JED MARCINIAK**  
SILVER STAGE  
MIDDLE  
SCHOOL



**SCOTT GILLESPIE**  
YERINGTON  
INTERMEDIATE  
SCHOOL



**JULIE BUMGARDNER**  
DAYTON HIGH  
SCHOOL



**RYAN CROSS**  
FERNLEY HIGH  
SCHOOL



**AMBER CROSS**  
SILVER STAGE  
HIGH SCHOOL



**DUANE MATTICE**  
SMITH VALLEY  
SCHOOL



**KATHY BOMBA-EDGERTON**  
YERINGTON HIGH  
SCHOOL

We  our Principals



# DISTRICT HIGHLIGHTS



Ninety-three students from schools across Lyon County School District participated in the Districtwide Special Olympics bowling event, which was hosted at the Fernley Fun Center and brought together students from across the district for an inclusive and celebratory experience.



Lyon County School District celebrated a record achievement with 53 students graduating with their associate degrees through the WNC Jump Start program, marking the highest number of graduates in district history.



The district adopted a new Career and Technical Education (CTE) and Work-Based Learning (WBL) logo to support the promotion of programs offered districtwide, with the logo proudly designed by a Lyon County School District student.

Lyon County School District launched the LCSD Recognition Coin Award, inspired by an LCSD Board of Trustees member, to honor outstanding staff, students, and community members who exemplify excellence and service.



Multiple student-athletes and athletic teams were recognized at the Nevada Interscholastic Activities Association (NIAA) level for both academic and athletic achievements during the school year. Additional information is available on the NIAA website.



# MTSS & PBIS

MULTI-TIERED SYSTEM OF SUPPORT  
&  
POSITIVE BEHAVIORAL INTERVENTIONS  
AND SUPPORTS

## 2024-2025 Awards

### Diamond Award

Dayton Elementary School  
Silver Stage Elementary School  
Yerington Elementary School

## 2023-2024 Awards

### Diamond Award

Silver Stage Elementary School  
Silver Stage Middle School

### Platinum Award

Riverview Elementary School

### Bronze Award

Dayton High School

## 2022-2023 Awards

### Diamond Award

Silver Stage Elementary School  
Silver Stage Middle School  
Yerington Elementary School

### Platinum Award

Riverview Elementary School  
East Valley Elementary School

### Gold Award

Dayton High School  
Cottonwood Elementary  
School

## 2021-2022 Awards

### Platinum Award

Dayton High School  
East Valley Elementary School

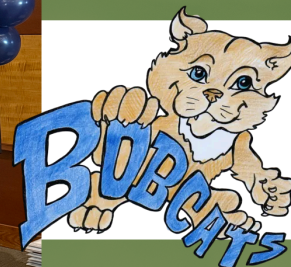
### Gold Award

Riverview Elementary School  
Silver Stage Middle School

### Bronze Award

Silver Stage Elementary School  
Yerington Elementary School

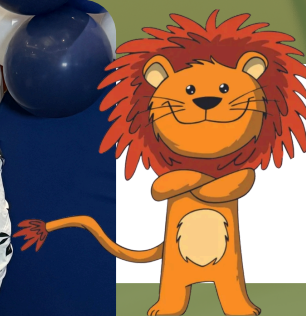
### DAYTON ELEMENTARY SCHOOL



### SILVER STAGE ELEMENTARY SCHOOL



### YERINGTON ELEMENTARY SCHOOL



The Multi-Tiered System of Supports (MTSS) is the framework Lyon County Schools use to ensure all students receive a high-quality education. MTSS helps create supportive, nurturing school environments by providing academic, behavioral, social, and emotional supports tailored to student needs.

Through strong universal instruction and additional targeted and individualized supports when needed, MTSS ensures that every student has access to the instruction and resources necessary to be successful. All 18 schools in Lyon County implement the MTSS framework as part of our commitment to supporting the whole child.





# BUDGET INFORMATION

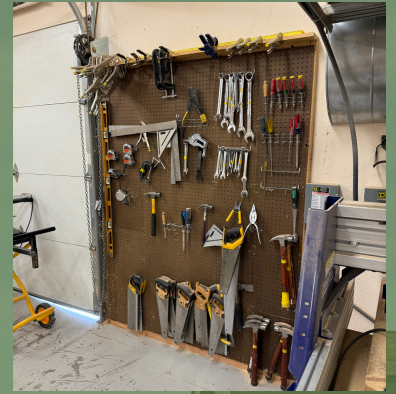
## GENERAL FUND BUDGETED REVENUE

Local*	\$650,000
State	\$117,965,038
Federal	\$161,000
<i>Total</i>	<i>\$118,776,038</i>

\*Under new Pupil Centered Funding Plan (PCFP) most Local Revenue flows through the State.

## GENERAL FUND BUDGETED EXPENDITURES

Salaries/Wages	\$52,553,518
Benefits	\$27,979,314
Services & Supplies	\$20,435,890
Fund Transfers	\$22,613,220
<i>Total</i>	<i>\$123,581,942</i>



# K-8 DISTRICT INFORMATION

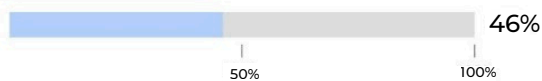
**iReady Diagnostic is an adaptive assessment tool designed to provide teachers with insights into a student's academic skills, identify areas where they're struggling, and measure growth throughout the school year.**

- ➔ Adaptive: The test adjusts its difficulty based on the student's performance, making it personalized.
- ➔ Insights: It provides detailed reports on students' skills in reading and math, identifying both strengths and weaknesses.
- ➔ Progress Monitoring: It allows teachers to track student growth over time, helping in evaluating the effectiveness of teaching strategies.
- ➔ Personalized Instruction: Based on the diagnostic results, iReady offers personalized learning paths for each student to address their skill gaps.

## READING

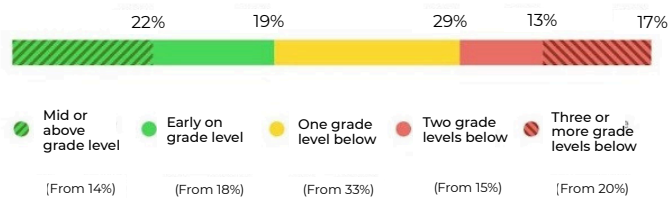
**\*SCORES REFLECT READING DATA FROM THE SECOND HALF OF THE 2024-25 SCHOOL YEAR, AS WE ARE CURRENTLY TRANSITIONING OUR TESTING PLATFORM - THE 2027 REPORT WILL HAVE THE FULL YEAR OF DATA TO ANALYZE**

Progress to Annual Typical Growth (Median)

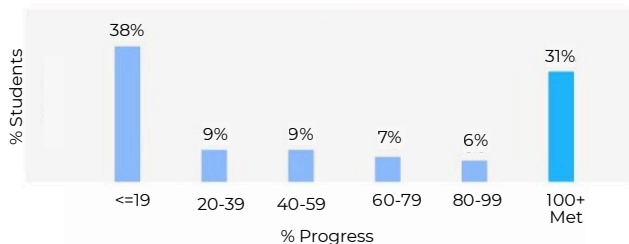


The median percent progress towards Typical Growth for this school is 46%. Typical Growth is the average annual growth for a student at their grade and baseline placement level

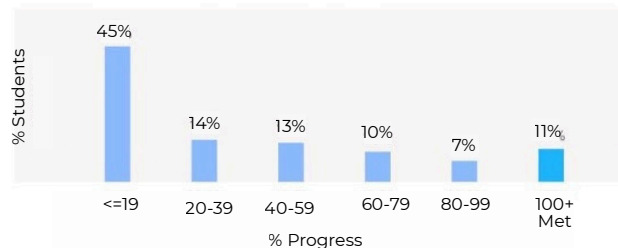
Current Placement Distribution



Distribution of Progress to Annual Typical Growth



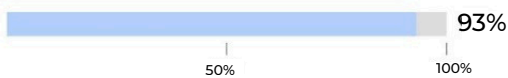
Distribution of Progress to Annual Stretch Growth



## MATH

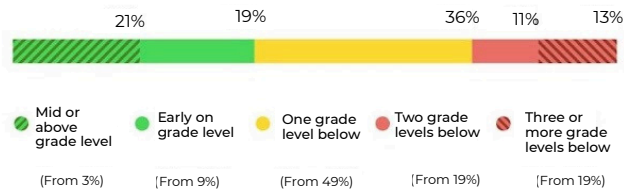
**RESULTS REFLECT THE 2024-2025 GROWTH**

Progress to Annual Typical Growth (Median)

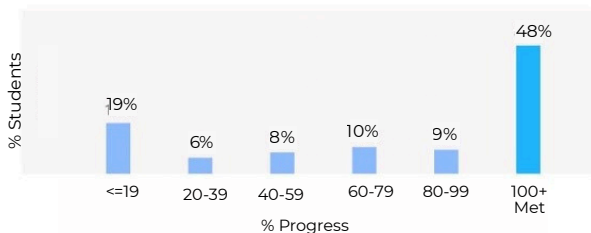


The median percent progress towards Typical Growth for this school is 93%. Typical Growth is the average annual growth for a student at their grade and baseline placement level

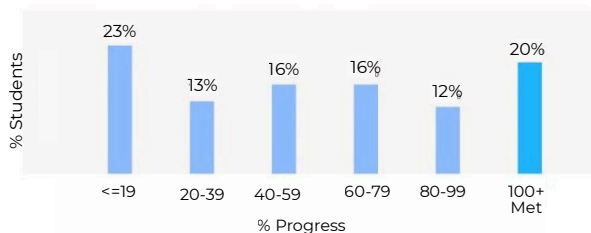
Current Placement Distribution



Distribution of Progress to Annual Typical Growth



Distribution of Progress to Annual Stretch Growth



# 9-12 DISTRICT INFORMATION

Students in LCSD gain the following Industry Recognized Credential (IRC) recognized by the Governor’s Office for WorkForce Innovation (GOWINN):

- ASVAB
- Certified Nursing Assistant (CNA)
- CPR
- Emergency Medical Services Assessment
- OSHA-10
- Welding 3G & 4G
- Workplace & Readiness Skills

Students also received the following certifications that are not on the GOWINN list:

- Certified IRS Tax Preparer
- ServSafe and CTECS

## CTE

CAREER AND TECHNICAL EDUCATION AWARD RATE:

	2023-24	2024-25
Students Eligible	365	446
Student Certificates awarded	191	228
Certificate award rate	52.3%	50%

## WBL

WORKPLACE READINESS RATE:

	2023-24	2024-25
Students Eligible	365	380
Student Certificates awarded	252	267
Certificate award rate	69%	70%

Average ACT Scores Composite Score \*

- 2025: 15.0
- 2024: 16.0
- 2023: 16.3
- 2022: 16.3
- 2021: 17.2

The ACT is a standardized test used for college admissions in the United States. The composite score is the average of a student’s four test scores (English, Math, Reading, and Science) rounded to the nearest whole number.

The State of Nevada has decided to use the ACT, a test used for college admission, as its college and career readiness assessment for all students. All students are required to take the ACT, even those who have decided to pursue a career, trade, or are not college bound.



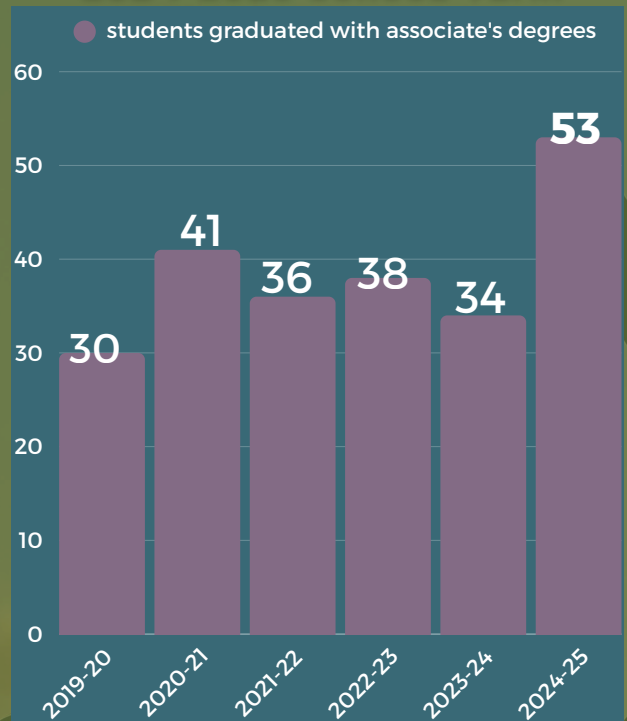
# WESTERN NEVADA COLLEGE JUMP START

## DUAL ENROLLMENT FOR LYON CSD HIGH SCHOOL STUDENTS

Western Nevada College (WNC) and Lyon County School District have developed a strong partnership that allows high school juniors and seniors to obtain college credit through dual enrollment courses. These courses count for both high school and college credit. Students who can maintain this rigorous schedule can obtain an Associate's Degree and a high school diploma.

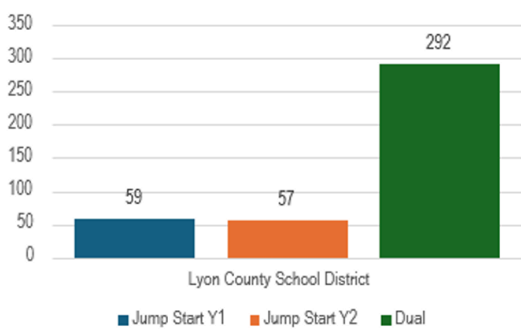


### 2024-2025 SCHOOL YEAR

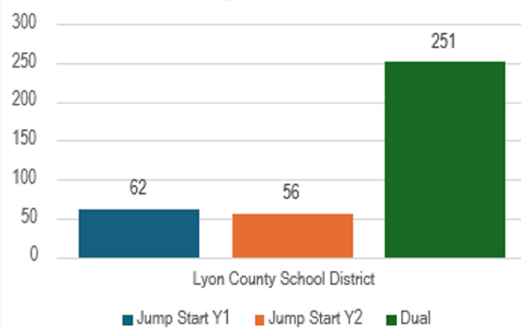


### 2024-2025 SCHOOL YEAR

# of Students Enrolled LCSD Fall 2024



# of Students Enrolled LCSD Spring 2025



The overall course success rate by LCSD students for the 2024-25 School year is over 94%!



# GRADUATION RATES



	2020-21	2021-22	2022-23	2023-24	2024-25
<b>Lyon</b>	87.39%	84.57%	86.41%	87.77%	85.73%
<b>State</b>	83.31%	81.7%	81.38%	81.6%	85.4%
<b>Dayton</b>	89.86%	85.89%	91.93%	92.64%	91.71%
<b>Fernley</b>	84.62%	84.35%	87.94%	87.04%	87.12%
<b>Silver Stage</b>	90.54%	91.78%	83.91%	89.55%	93.90%
<b>Smith Valley</b>	100%	100%	100%	100%	100%
<b>Yerington</b>	90.11%	86.46%	86.17%	94.68%	90.53%



2024-25 school year



Schools receive points based on student performance across various indicators and measures. These points are totaled and divided by the points possible to produce an index score from 1-100. This index score is associated with a one- to five-star school rating. Find more at [nevadareportcard.nv.gov](http://nevadareportcard.nv.gov)

- Cottonwood Elem. - 3
- Dayton Elem. - 1
- East Valley Elem. - 2
- Fernley Elem. - 2
- Riverview Elem. - 2
- Silver Stage Elem. - 2
- Smith Valley Combined Elem. - 2
- Sutro Elem. - 1
- Yerington Elem. - 2

- Fernley IS - 1
- Silverland MS - 1
- Dayton IS - 1
- Silver Stage MS - 2
- Smith Valley Combined MS - 2
- Yerington IS - 2

- Fernley HS - 2
- Dayton HS - 3
- Silver Stage HS - 3
- Smith Valley Combined HS - 3
- Yerington HS - 3



# WORK BASED LEARNING (WBL)

## OPPORTUNITIES OFFERED IN LYON CSD

**2024-25**

LCSD WBL Opportunities:

- Job Shadows
- Internships
- Clinical Experiences
- Supervised Agricultural Experiences
- Simulated Work Experiences
- Student-Based Enterprises
- Pre-Apprenticeships
- CTE Work Experience

Opportunity:	Number of Students	Percentage of students with IEP
Job Shadow	26	65%
Simulated Workplace Experience	462	5%
School Based Enterprise	241	12%
Supervised Agriculture Experience	198	5%
Career Training Including Clinicals	113	0%
Pre-Apprenticeship	0	0%
Internship	83	4%

State Approved Credential Earned - Industry Recognized Credential (IRC):

**903 students**

Non State Approved Credential Earned- IRC:

**229 students**

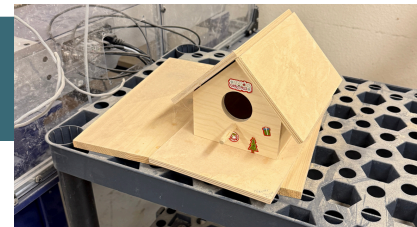
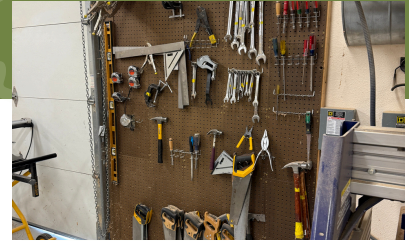
**Number of Credentials Earned:**

- OSHA 10 - 369
- AWS - 6
- CPR - 38
- ASVAB - 163

Number of Students that participated in CTE Work Experience: **67**

Number of Students that participated in General Work Experience: **287**

During the 2024-2025 academic year, the K-12 district facilitated 1,966 Work-Based Learning opportunities. These programs engaged 25,396 students, with many individuals participating in multiple activities.



# CAREER & TECHNICAL EDUCATION (CTE)

## PROGRAMS OFFERED IN LYON CSD



**CTE•WBL  
LYON COUNTY  
SCHOOL DISTRICT**



### Dayton High School

- Building Construction Tech
- Advanced Computer Science
- Culinary Arts
- Cybersecurity
- Digital Game Development
- Nursing Assistant
- Marketing
- Principals of Health Science
- Teaching & Training

### Dayton Intermediate

- Career Foundations in IMT
- Career Foundations in EHH
- Career Foundations in STS

### Fernley High School

- Ag/Animal Science/Plant Science/Vet Science
- Accounting & Finance
- Building and Construction Tech
- Business Management
- Community Health
- Design Drafting
- Electronic Technology
- Emergency Medical Tech (EMT)
- Web Design
- MultiMedia Technology
- Nursing Assistant
- Principals of Health Science
- Sports Medicine
- Teaching & Training
- Welding
- \*Culinary anticipated in 26/27

### Silverland Middle School

- Career Foundations in BUS
- Career Foundations in HSPS
- Career Foundations in EHH
- Career Foundations in STS

### Silver Stage High School

- Building Construction Tech
- Digital Electronics
- Electronic Technology
- Graphic Design
- Principles of Engineering
- Teaching and Training
- Nursing Assistant
- Principals of Health Science

### Silver Stage Middle School

- Career Foundations in EHH
- Career Foundations in IMT
- Career Foundations In Ag
- Career Foundations in STS

### Smith Valley School

- Ag Science/Animal Science/Plant Science
- Ag Mechanics Welding and Power Supplies
- Principles of Health Science
- Sports Med
- Digital Game Design
- Graphic Design
- Business Management
- Career Foundations in IMT
- Career Foundations in STS
- Career Foundations in Ag

### Yerington High School

- Ag Science/Plant Science/Animal Science/Vet Science
- Ag Welding and Power Structure
- Automation Technology
- Advanced Manufacturing
- STEM/Engineering
- Nursing Assistant
- Teaching & Training

### Yerington Intermediate School

- Career Foundations in BUS
- Career Foundations in EHH
- Career Foundations in STS
- Building Engineers



# APPENDICES:

- **A: LCSD DISTRICT PERFORMANCE PLAN**
- **B: MANDATED ASSESSMENTS**
- **C: COMMUNITY PARTNERSHIP**



# APPENDIX A: LYONCSD DPP 2025-26

## 2025-26 Lyon CSD District Performance Plan (DPP) One Page Summary

### SMART stands for Strategic, Measurable, Ambitious, Realistic, Time-bound

#### Inquiry Area: Instructional Practices and Supports

**SMART Goal:** In grades K-8, at least 58% of students in Lyon County School District will meet or exceed their personal typical growth in math and reading from the Beginning of Year (BOY) assessment to the End of Year (EOY) i-Ready assessment during the 2025/2026 school year.

**Improvement Strategy:** Data driven instruction, regularly analyzing data to identify student strengths and weaknesses to help teachers tailor instruction to address a student's individual needs.

**Resources Needed:**

- i-Ready Reading and Math Assessment Suite
- i-Ready Math Curriculum
- HMH ELA Curriculum
- Study Sync ELA Curriculum
- Ongoing Professional Learning
- Time for Data Digs
- District MTSS meetings
- College and Career Readiness Interventionists (CCRI)

**SMART Goal:** In grades 9-10, at least 55% of students in Lyon County School District will meet their individual growth goal in math and reading from Fall to Spring Measure of Academic Progress (MAP) testing during the 2025/2026 school year.

**Improvement Strategy:** Data driven instruction, regularly analyzing data to identify student strengths and weaknesses to help teachers tailor instruction to address a student's individual needs.

**Resources Needed:**

- MAP Assessments
- ALEKS
- Study Sync
- Pearson AGA
- Time for data digs
- District MTSS meetings
- College and Career Readiness Interventionists (CCRI)

**SMART Goal:** The percentage of college bound students in grade eleven (11) who will earn a composite score of 16-36 on the ACT, will increase by 5% from the 2024/2025 school year to the 2025/2026 school year.

**Improvement Strategy:** Schools will focus on rigorous coursework, data driven assessment and goal setting with progress monitoring.

**Resources Needed:**

- Time for instruction and data analysis
- Data Digs
- ALEKS
- Study Sync
- WorkKeys

#### Inquiry Area: Student Success

**SMART Goal:** Lyon County School District will increase the graduation rate from 88.7% to 89.7% by the end of the 2025/2026 school year.

**Improvement Strategy:** Academic supports and interventions needed to ensure the success of all students.

**Resources Needed:**

- College and Career Readiness Interventionists
- Graduation/Academic Plans
- Credit Sufficiency Checks
- Dual Credit Offerings
- Advising and Career Services
- Online Learning
- Social Emotional Learning

**SMART Goal:** Lyon County School District will increase the total number of K-12 work-based learning opportunities provided to all students by 10% from the 2024/2025 school year to the 2025/2026 school year.

**Improvement Strategy:** Increasing awareness and engagement of all stakeholders by expanding industry partnerships. Developing career awareness through portfolio creation in School Links.

**Resources Needed:**

- Pathful
- School Links
- PAES Labs
- Industry Partnerships

**SMART Goal:** One hundred percent of Lyon County School District high schools will implement WorkKeys for students by the end of their 10th grade year. LCSD will accomplish this by the end of the 2025/2026 school year. This will serve as a baseline for students earning the bronze, silver, gold, and platinum certificates.

**Improvement Strategy:** Implementation of ACT's Work Keys Curriculum and the National Career Readiness Certificate (NCRC)

**Resources Needed:**

- Work Keys Curriculum
- NCRC Assessments

**SMART Goal:** Lyon County School District will increase the total number of students participating in K-12 work-based learning opportunities by 10% from the 2024/2025 school year to the 2025/2026 school year.

**Improvement Strategy:** Increasing awareness and engagement of all stakeholders by expanding industry partnerships. Developing career awareness through portfolio creation in School Links.

**Resources Needed:**

- Pathful
- School Links
- PAES Labs
- Industry Partnerships

#### Inquiry Area: Connectedness

**SMART Goal:** Lyon County School District will reduce the chronic absenteeism rate by 10% from the 2024/2025 school year to the 2025/2026 school year.

**Improvement Strategy:** Utilizing data, schools will engage families and provide early intervention to improve attendance. Engaging curriculum and instruction to improve attendance.

**Resources Needed:**

- Infinite Campus Student Information System
- College and Career Readiness Interventionists
- School Resource Officers
- MTSS Teams
- Expanded in person and telehealth Mental Health Resources in Schools



# APPENDIX B: MANDATED ASSESSMENTS

Assessment Source:

Assessment Name:

# of Times Tested per year

Grade:

Source	Assessment	#/Year	PK	K	1	2	3	4	5	6	7	8	9	10	11	12
Federal	National Assessment Of Educational Progress (NAEP)	1														
State	Smarter Balanced Assessment Consortium (SBAC)	1														
State	Kindergarten Entrance Assessment (KEA)	1														
State	Nevada Science Assessment	1														
State	College And Career Readiness Assessment <i>(American College Test (ACT) + Writing)</i>	1														
State	English Language Proficiency Assessment (WIDA) <i>Based On English Language Learner (ELL) Status</i>	1														
State	Career And Technical Education Assessment (CTE) <i>Based On CTE Enrollment/NCRC</i>	2														
LCSD	Advanced Placement (AP) <i>AP Course Enrollment</i>	1														
LCSD	Measure Of Academic Progress (MAP) In Reading & Math	3														
LCSD	iReady Diagnostic Assessment <i>(Reading &amp; Math)</i>	3														
LCSD	High School Final Exams	2														
LCSD	School Site Common Assessments	Unknown	As Utilized By Schools And Departments													
LCSD	Formative Interim Assessments <i>Identified By The Site MTSS Team.</i>	Unknown														

List of standardized assessments by state

# APPENDIX C: COMMUNITY PARTNERS

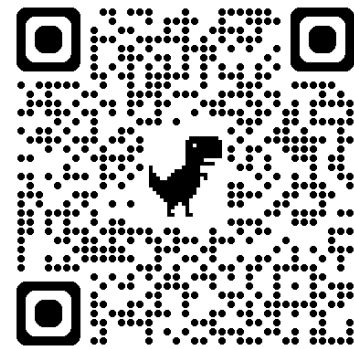
## GET INVOLVED! THE FUTURE WORK FORCE IS IN OUR SCHOOLS.

**schoolinks** 

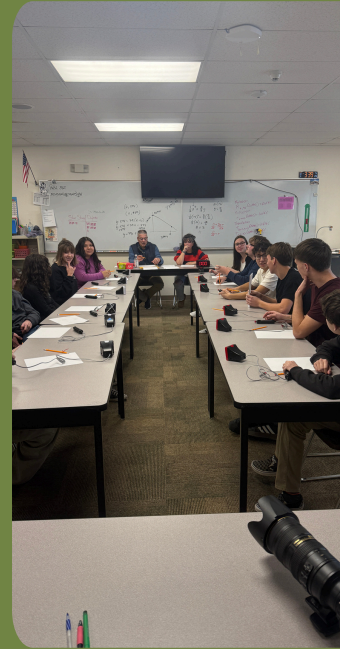
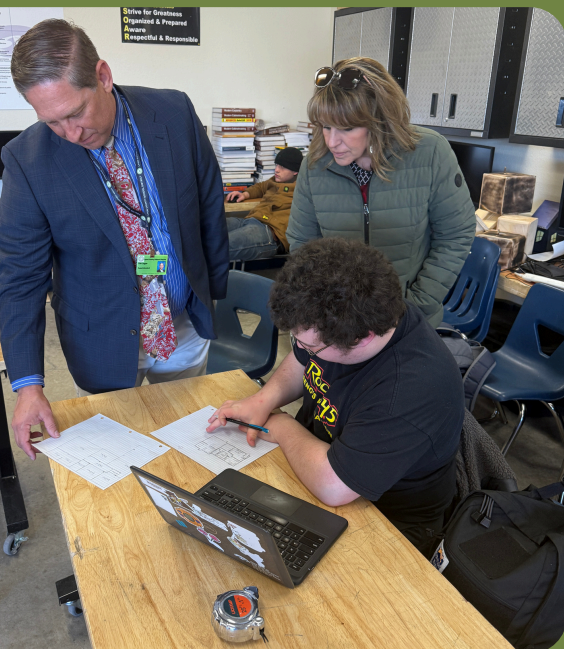


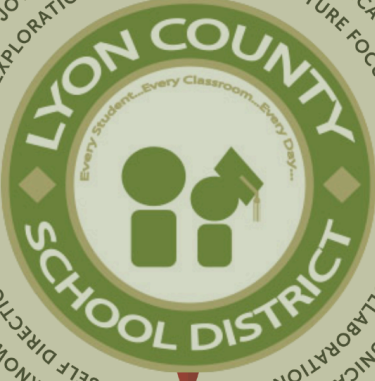
At Lyon County School District, we are committed to empowering every student to achieve their full potential. That's why we're thrilled to introduce SchoolLinks, our new comprehensive college and career readiness platform designed to guide students from exploration to success.

### BECOME A COMMUNITY PARTNER TODAY!



**SCAN NOW!**





DISCOVERY LEARNING  
PROBLEM SOLVING  
JOY  
EXPLORATION

LEARNING FOR LIFE  
PERSEVERANCE  
APPLICATION  
FUTURE FOCUS

STUDENT OWNERSHIP  
EMPOWERMENT  
SELF KNOWLEDGE  
SELF DIRECTION

CONNECTED LEARNERS  
BELONGING  
COMMUNICATION  
COLLABORATION



**LCSD MISSION:**

**GRADUATE ALL STUDENTS**

**TO BE COLLEGE**

**CAREER AND *Life***

**SUCCESSFUL!**

**CONTACT  
INFORMATION:**

☎ (775) 463-6800

✉ [communications@lyoncsd.org](mailto:communications@lyoncsd.org)

🏠 25 E Goldfield Ave, Yerington, NV 89447

🌐 [www.lyoncsd.org](http://www.lyoncsd.org)



**@LYONCSD**