

February Message

Equity, Diversity, & Inclusion



EDI Monthly Message - February 2026

Celebrations in February include Black History Month, National Freedom Day, Valentine's Day, Maha Shivratri, Presidents' Day, Lunar New Year, Ramadan, Ash Wednesday, Lent, & Orthodox Lent. Learn more about each of these holidays from the EDI Committee's Cultural Calendar:

[Cultural Calendar for Google Calendar](#)

[Cultural Calendar PDF](#)

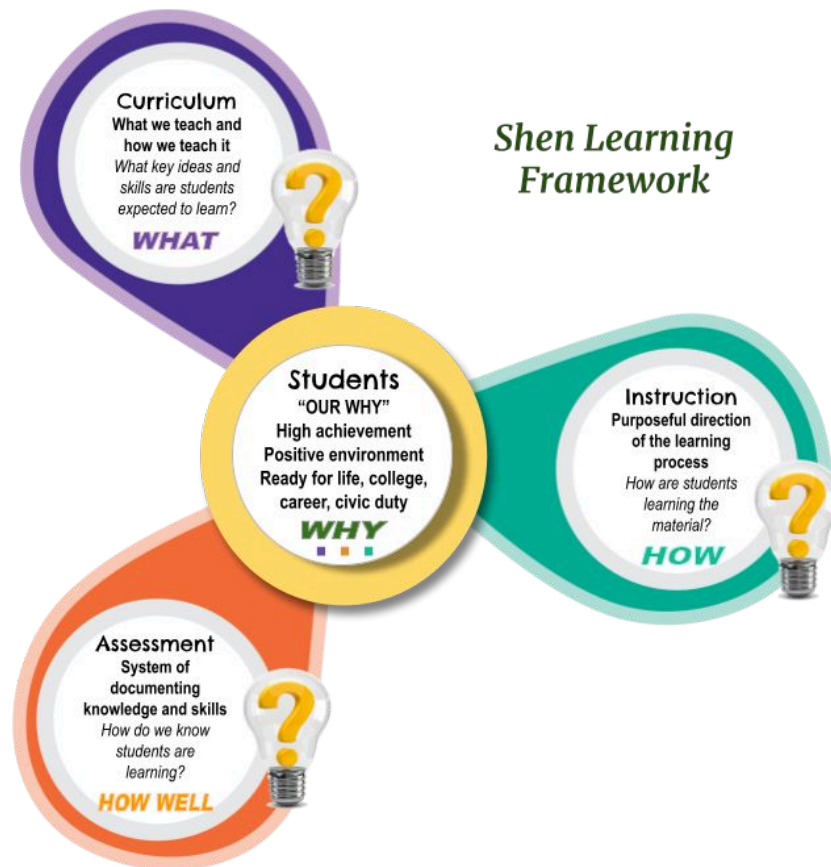
What does student voice mean?

One of our District's EDI Committee goals this year is to spotlight **student voice**.

You've heard the term, "student voice," but what does it actually mean?

In the Shenendehowa Learning Framework ([The Framework](#)), developed in 2021, [students](#) are at the center.

The student experience is built on safety, belonging, cultural relevance, and intellectual and social engagement. Our goal is for students to experience a learning environment that promotes their voice and empowerment.



We asked teachers and students to define student voice in the realm of curriculum and instruction. Their answers show that this phrase has many relevant and accurate interpretations. Here's what some of our students and teachers said about student voice.

Quotes from Students



"Getting choices in assignments and having the space to express their interests."

"Students should be able to share out and show their creativity and power that they contribute to themselves."

"I would classify student voice as what the students' beliefs are. Different people believe different things."

"Raising hands and asking questions, with teachers asking students if they understand and having them explain their takeaway in their own words."

"Feeling comfortable enough to contribute to discussions or ask for help when we don't understand something."

I would define a student voice as someone who is small and not very confident being able to let out their own ideas and perspectives instead of everyone else taking over like other students, teachers, staff, parents."



Quotes from Teachers



“Engaging students in a give and take in the classroom - essentially direct the instruction.”

“Giving students options to show their creativity.”

“Involving students in the whole learning process.”

Connecting with what is going on in their lives with what they’re learning about in class.”

“Giving students choice in how to complete an assignment or task.”

“Giving students a safe space in the classroom to ask questions and to be who they are as people. It’s a chance for students to engage with each other as people - away from screens - to learn more about what they really think and feel.”

“Fully recognizing all perspectives in the classroom or school setting - giving representation to those that do not have a voice elsewhere. ”

In future messages, we’ll be sharing more detailed examples of student and teacher voice in Shen schools and classrooms to inform and inspire you.

Keep an eye out for the March Monthly Message!

Shenendehowa Central Schools

5 Chelsea Place Clifton Park, NY 12065

518-881-0610