

2025-2026 School Improvement Plan

Spring Board Presentation

Lacey Elementary School	<i>Data from OSPI Tableau District Preview: Report Card October 2025 Enrollment</i>
Principal: Autumn Cummings, 1 yr	Enrollment: 335
Asst. Principal: n/a	Free/Reduced Lunch: 58.8%
	Multilingual: 10.4%
	BIPOC: 54.3%
	Special Education: 26.0%

Goals

Strategic Plan Goal: Goal 4 **Continuous growth—All Students, All Subjects. Every student will demonstrate continuous growth towards meeting/exceeding rigorous standards.**

Outcome: Increased percentage of students demonstrating proficiency on fluency standards

Academic Gap Goal: Lacey Elementary is launching a 3-year initiative to reduce the percentage of students scoring Well Below Benchmark in reading fluency (as measured by DIBELS) by 10%, comparing Fall 2025 to Spring 2026 results.

Indicators of Progress:

- Teachers are reporting success by getting a rhythm and routine going with the new curriculum.
- The Title 1 team is using the problem-solving model template to collaborate, reflect, and inform instructional decisions.

Concern Area:

- All grades made growth except for third grade, which is a trend we saw across the entire district.
- ML students are not making adequate growth in reading fluency.

Next Steps:

- Continue to progress monitor biweekly, using DIBELS to monitor students in the Well Below benchmark range in Reading Fluency.
- ML teacher is adding 10 minutes of phonics instruction during her ML lessons. She is also increasing from 2 days a week to 4 days a week.
- We will help support our 3rd grade PLC by analyzing their data to decide next steps and what support is needed.

Strategic Plan Goal: Goal 2 **Responsible, Resilient, Empowered Learners**

Outcome: Outcome B — Increased percentage of regular school attenders.

Behavioral or SEL Gap Goal: For the 2025–26 school year, by the end of Quarter 3, the percentage of students classified as Chronic Attenders (students who miss more than 18 days in the year) will decrease by 10% compared to the same period in the 2024–25 school year.

Indicators of Progress:

- In January, we did a new year new streak challenge and two students won Chromebooks. This decreased chronic absences in January by 6% compared to January last year.

Concern Area:

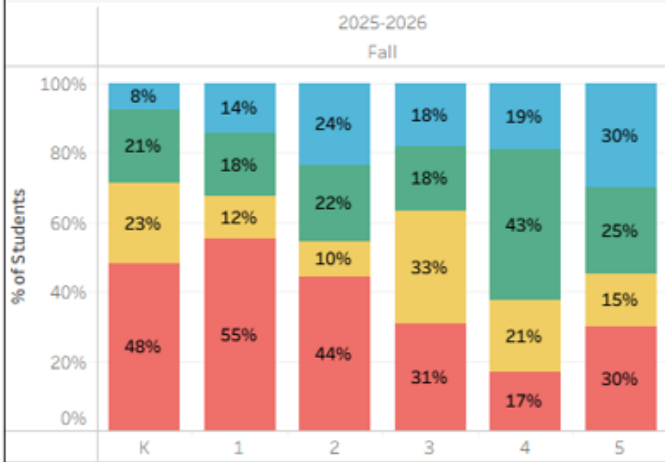
- Family vacations have been on the rise this year, and we are working on communication of the district policy around family vacations to help improve this concern. Many families are taking multiple trips in a year.

Next Steps:

- Continuing to monitor attendance concerns and meeting with families to address barriers.
- During March Madness, we will have class competitions with a bracket and encouraging attendance. The winning class in the attendance tournament will win a pizza party from our Pie Partner Dirty Daves.
- During our next PLC day, we are meeting to look over our grade level attendance numbers and identifying two students in each class that the teacher is going to focus on who have had chronic absences in the past and to help remove barriers.
- During conferences, teachers will have the opportunity to meet with families and share an update on their child's attendance for this year.

Achievement and Attendance Data

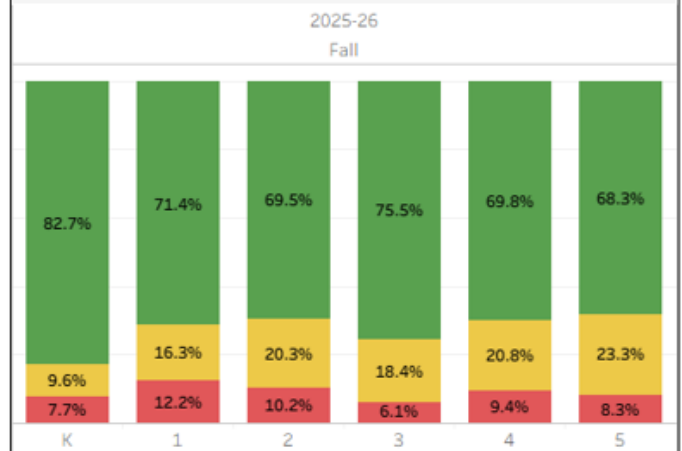
DIBELS Reading Composite Benchmark Performance - LC



Performance Level

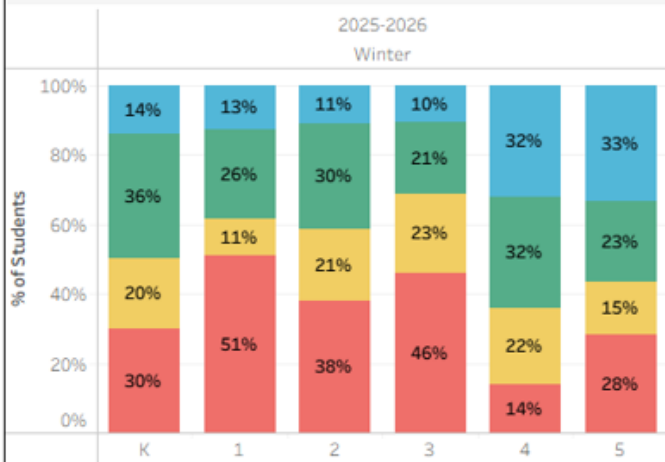
Above Benchmark At Benchmark Below Benchmark Well Below Bench.

easyCBM Math Risk- LC

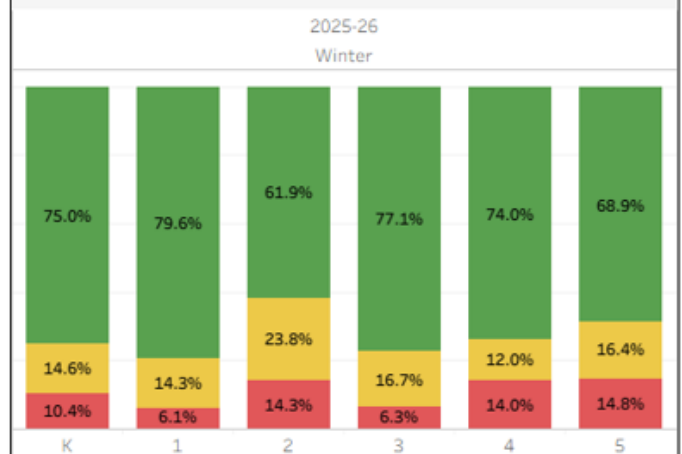


Math Risk Low Some High

DIBELS Reading Composite Benchmark Performance - LC

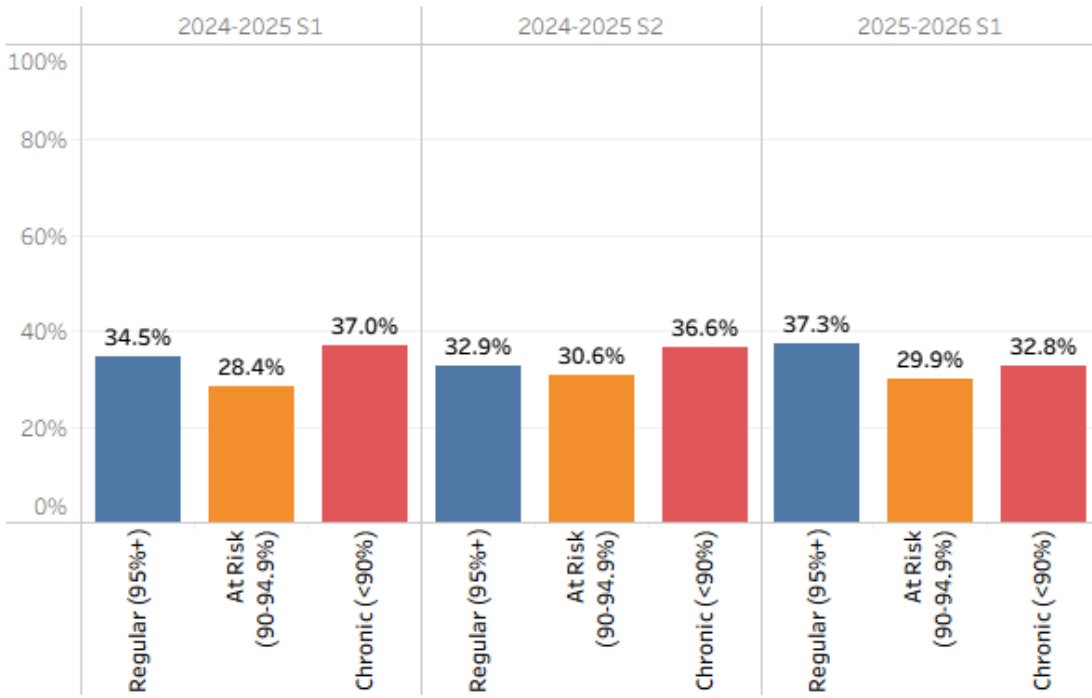


easyCBM Math Risk- LC



Overall School Attendance Rate for LC *(select school)*

ATTENTION Please see "Attendance Data During COVID-19" tab for important information.



Select School

LC

Select Gr

(All)

Select Year

(Multiple values)

Attendance Type

- Regular (95%+)
- At Risk (90-94.9%)
- Chronic (<90%)