



IBDP info session for parents

We nurture learners as balanced, informed, and empathetic thinkers to embrace their full potential.



International Baccalaureate: Facts & Figures



- Developed in 1968 in Geneva by a group of international educators.
- IBO offers four programmes:
 - PYP - Primary Years Programme
 - MYP - Middle Years Programme
 - DP - Diploma Programme
 - CP - Career Related Programme



History of IBDP Assessments

1970 First official IB Diploma Programme exams taken by students at 12 schools from 10 countries – including two state schools (Germany and France)

2025 Exams were taken by 202,103 students at 3,401 schools from 153 countries

- Pass rate 81.3%
- Mean grade 4.9 (out of 7)
- Mean total points 30.5 (out of 45)



History of IBDP in Nova International School

- Official date of authorization - January 31, 2006

School Statistics	2008	2016	2025
Number of candidates registered in the session:	14	54	94
Number of diploma and retake candidates registered in the session:	14	31	81
Number of subject entries in the session:	112	280	666
Number of candidates who passed the diploma:	10	27	73
Average points obtained by candidates who passed the diploma:	33	33	32
Highest diploma points awarded to a candidate:	37	42	44
Average grade obtained at the school by candidates who passed the diploma:	5.33	5.19	5.09

Pass rate 90.3%

Mean grade 5.09
(out of 7)

Mean total points
32 (out of 45)



How is the IB Diploma Program different from other high school diplomas?

- The Diploma Program is a comprehensive and balanced two-year curriculum and assessment system that requires students to study courses across all disciplines.
- Each subject is studied through an international perspective
- Critical reflection on what it means to be a 'knower'
- One subject is pursued in great detail through independent research
- Opportunity to apply the knowledge and skills in local and community outreach.



Why choose the IBDP?

IB students grow the skills, mindset and confidence to thrive in life. They are prepared for the future as they:

- learn how to think critically
- strengthen their communication and research skills
- connect knowledge across subjects
- take ownership of their own learning
- grow into internationally minded citizens who appreciate different cultures and perspectives.



What kind of student is a good candidate for the DP?

- The Diploma Program is an academically challenging course of study for motivated students.
- Prior academic success is less an indicator of ability to earn the diploma than are student's:
 - determination to do his or her best
 - willingness to be organized in order to complete the work
 - strong commitment to learning in and beyond the classroom
 - good attendance record



What are the advantages of graduating in the DP?

Former Nova graduates who were enrolled in the DP report that the programme has given them the tools needed to succeed at university and to make the most of their post-secondary education, including:

- sense of preparedness,
- self-confidence,
- writing and research skills,
- ability to manage their time,
- willingness to be actively engaged in their own learning and the world around them.



What is the difference between MYP and the DP?

The MYP (ages 11–16) and DP (ages 16–19) differ primarily in ***purpose*** and ***intensity***:

MYP offers:

- broad, conceptual foundation with inquiry-based learning
- skills-based approach
- building foundational skills and critical thinking
- criterion-based assessment, focusing on formative and summative assessments (1-8 scale)

DP provides:

- rigorous, specialized pre-university preparation
- content heavy
- focuses on depth of knowledge
- primarily summative assessment, including final exams and internal assessments (1-7 scale)



How should students decide which courses to take?

- Read the information provided on the IBO website regarding the curriculum and the subject brief of each course
- Consider their own strengths and weaknesses
- Confer with their current teachers, IBDP students, parents, and university and career counselors
- Consider their college & career options and check admission requirements with individual universities.



Key considerations for choosing subjects

The IB encourages students to spend time reviewing universities and degree programs of interest to become familiar with specific entry requirements and terminology:

- **Required subjects:** for many degrees, universities will expect the student to have achieved minimum grades in specific subjects.
- **Preferred subjects:** some university entry requirements state preferred subjects, which are not required for entry, but may give preference to the application over others who do not have that subject.
- **Recommended subjects:** some university entry requirements state recommended subjects. These are not required for entry but provide a good foundation for future study.



How does Quality Curriculum Looks Like in DP?



How does Quality Curriculum Looks Like in DP?

Approaches to Teaching	Approaches to Learning	The Learner Profile
<ul style="list-style-type: none"> ★ Inquiry based learning ★ Conceptual Understanding ★ Local and Global contexts ★ Effective Teamwork ★ Differentiation ★ Assessment 	<ul style="list-style-type: none"> ★ Thinking skills ★ Research skills ★ Communication skills ★ Social skills ★ Self-management skills 	<ul style="list-style-type: none"> ★ Balanced ★ Caring ★ Communicator ★ Inquirers ★ Knowledgeable ★ Open-minded ★ Principled ★ Reflective ★ Risk-taker ★ Thinker

Core Subjects in DP

Extended Essay

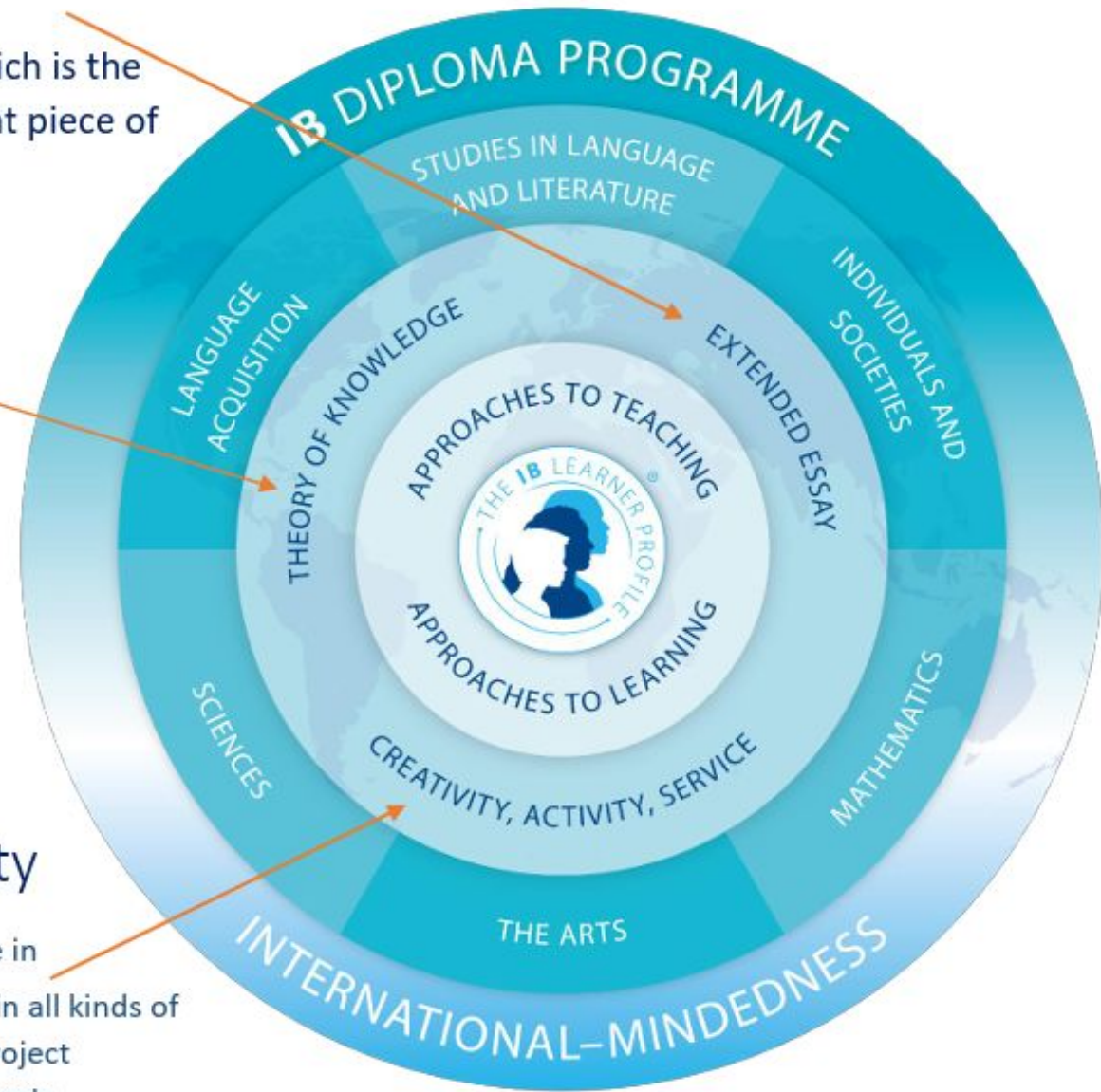
a 4,000-word paper which is the result of an independent piece of research

Theory of Knowledge

a course in which students reflect on the nature of knowledge and on how we know what we claim to know.

Creativity Activity

Service a programme in which students participate in all kinds of activities and complete a project related to those three concepts.



Core Subjects in DP

Theory of Knowledge

A course that:

- ✓ Encourages critical thinking and intellectual curiosity
- ✓ Explores questions related to how we know what we claim to know
- ✓ Develops students' intercultural understanding by exploring multiple perspectives and fostering open-mindedness.

Assessment

- TOK exhibition
- TOK essay

The Extended Essay

An essay that:

- ✓ Challenges students to engage in independent, in-depth research and critical thinking
- ✓ Focus on sustaining academic writing
- ✓ Topic chosen from one of the six IB subject groups
- ✓ A supervisor is allocated to support the EE process
- ✓ Excellent preparation for Higher Education

Assessment

- 4000 word research essay

CAS (Creativity, Action and Service)

A programme that encourages students to participate in three key areas:

- ✓ Creativity – artistic interests
- ✓ Activity – physical well-being
- ✓ Service – contribution to the communities through volunteering and social projects

Assessment

- Projects logged
- Reflection diaries

How do students choose subjects in DP?

- Students are required to choose one subject from each of the six academic areas.
 - Group 1: Studies in language and literature
 - Group 2: Language acquisition
 - Group 3: Individuals and societies
 - Group 4: Sciences
 - Group 5: Mathematics
 - Group 6: The arts
- Students may opt to study an additional science, I&S or Language B/Ab initio course as their Group 6 subject (subject to availability and scheduling constraints).



Group 1

[English A: Language and Literature](#) (HL/SL)

[Macedonian A: Literature](#) (HL/SL)

[Albanian A: Literature](#) (HL/SL)

[School Supported Self-Taught: Language A: SL](#)

Group 2

[English B](#) (HL)

[French B](#) (HL/SL)

[French Ab Initio](#) (SL)

[Spanish B](#) (HL/SL)

[Spanish Ab Initio](#) (SL)

[German B](#) (HL/SL)

[German Ab Initio](#) (SL)

Group 3

[History](#) (HL)

[Psychology](#) (HL/SL)

[Business Management](#)(HL)

[Economics](#) (HL/SL)

Group 5

[Mathematics: Analysis and](#)

[Approaches](#) (HL/SL)

[Mathematics: Applications](#)

[and Interpretations](#) (SL)

Group 4

[Biology](#) (HL/SL)

[Computer Science](#) (HL/SL)

[Chemistry](#) (HL)

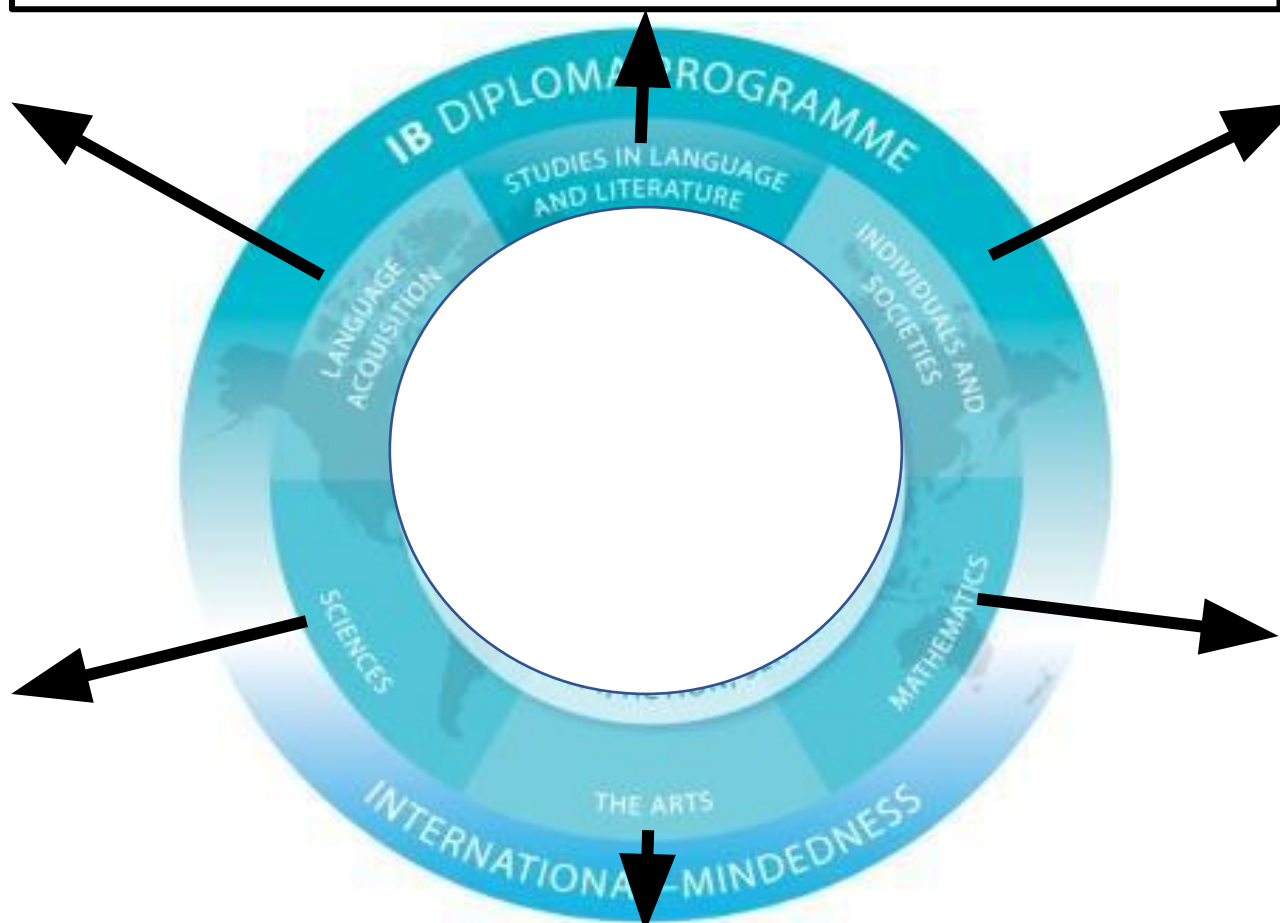
[Physics](#) (HL/SL)

[Sports Science](#) (HL/SL)

Group 6

[Dance](#) (HL/SL)

[Music](#) (HL/SL)



What is the difference between HL/ SL subjects?

- Students should take three subjects at higher level (HL) and three at standard level (SL).
- In some cases, a student may take four subjects at higher level, and the remaining at standard level.
- **Standard** level subjects take up **150** teaching hours.
- **Higher** level comprises **240** teaching hours.
- HL and SL courses differ in scope but are measured according to the same grade descriptors, with students expected to demonstrate a greater body of knowledge, understanding and skills at higher level.



What are the different pathways offered at NOVA?

- Different combinations of subjects are offered for different pathways based on the HL subjects
- Other subjects are also possible if they fit in the schedule
- Applying for Medicine, in a few countries (such as India, Pakistan and some Scandinavian countries) requires three science subjects (biology, chemistry, physics and mathematics) and then the non-regular Diploma should be considered
 - students need to apply in 11th grade, to be approved by IBO



What are the different pathways offered at NOVA?

Economics or Business focused pathway:

- HLs - Business and Economics

Engineering/ Computer Science/ Architecture focused pathway:

- HLs - Math AA and Physics

Humanities focused pathway:

- HLs - Individuals and Societies/ Languages

Science/ Medicine/ Pharmacy focused pathway:

- HLs - 2 Sciences
- HLs - 3 Sciences (special Diploma request)



How do we decide which DP English language course is right for my child?

- **Studies in Language and Literature (English A)** are for students who can already read, analyse, and respond to complex literary and non-literary texts in a language must be enrolled in.
- **Language Acquisition (English B)** is intended for students who are learning an additional language, not for those already fluent or highly proficient.
- Intentional misplacement of a student into a language course that does not offer sufficient challenge may be considered school maladministration, as outlined in IB academic integrity guidelines.



What is the difference between the two Language A courses?

- **Language A: Literature (Mother Tongue)**
This course focuses on studying literary works in depth. Students learn how to analyse literature, understand literary techniques, and develop their own independent interpretations and critical opinions about texts.
- **Language A: Language and Literature (English)**
This course explores how language creates meaning in both literary and non-literary texts (such as media, advertisements, speeches, and articles). Students learn how context influences meaning and how language is used to shape ideas and perspectives.



What is the difference between full diploma and course candidates?

- IB Course Candidate is a student who takes one or more individual IB subjects, but not the full diploma.
 - No need to complete all 6 subjects
 - No need to complete all Core requirements (TOK, EE, CAS)
- Receive IB Course Certificates for each subject completed.
- May still meet university entry requirements, depending on: the country, the university and the chosen programme.
- May rely more heavily on national qualifications (if taken alongside IB courses).



Do students have the same teacher both years?

- Sometimes yes, sometimes no.
- This depends upon the subject and the student's individual scheduling needs.



What if the subject needed for University is not offered in the school?

- Students can follow individual DP courses online if their preferred subject is not available at their school
- Pamoja collaborates with the IB in developing and delivering a broad range of authorized DP online subjects.
- School Supported Self-Taught Courses in Language A: Literature (native language)
 - Working with a Tutor, paid by the family



What if the student needs accommodations?

- The IB principles of inclusive education focus on all students – opportunity for every student to fully participate and engage in IB programmes
- The [access and inclusion policy](#) is designed to enable full participation of all students across all four IB programmes in teaching, learning and assessment (formative and summative), by reducing and removing barriers using appropriate and well-planned access arrangements.
- For an inclusive access arrangement:
 - medical documentation/ psychological assessment
 - educational evidence
 - request should be made in Grade 11



How does assessment look like in DP?

- Assessment of student achievement happens in a variety of ways throughout the course of the two-year program.
- It includes assessment of student work both by outside examiners, as well as the students' own teachers.
- All assessment undergoes careful review or moderation to ensure that a common, international standard is applied equally to the work of students around the world.
- The IB is a points system. Each subject works on a scale of 1-7 (7 being the highest). The maximum amount of points a student can get is 42.



How does assessment look like in DP?

Internal Assessments

- A different type of project in every subject
- Individual oral in languages
- Comments and marks provided by teachers
- Moderated by IB examiners
- Mock exams in DP2

External Assessments

- Exams consisted of several papers in each subject (end of DP2) in May
- TOK - Essay
- Extended Essay
- [Sample exams](#)

A **bilingual** diploma is awarded to candidates who complete and receive a grade 3 or higher in two languages selected from the DP course studies in language and



What requirements should be met for obtaining the Diploma?

- A minimum of 24 total points must be achieved combined on the 6 exams to earn an IB Diploma. Exams are scored on a scale from 1-7.
- The higher level exam scores must total 12 points or higher. The standard level exam scores must total 9 points or higher.
- No higher level exam score may be lower than a 3 to qualify for the IB Diploma.
- No more than two 2s and/or three 3s or lower grades
- No grade 1 or N or F
- Successful completion of Theory of Knowledge (ToK) course; Extended Essay (EE) and completion of the outcomes of Creativity, Activity, Service (CAS).



What are the habits of successful DP students?

- Show up consistently and engage actively in their learning
- Demonstrate strong self-management and responsibility
- Plan ahead and meet deadlines with integrity
- Communicate openly and respectfully with teachers and the school
- Produce honest, authentic work and use sources responsibly
- Maintain a healthy balance and prioritize their well-being



Common Myths About DP

IB Students have no life other than school:

- Whereas academic achievement, and therefore studying, is a priority, DP students enjoy a very rich extracurricular high school experience.
- DP students have successfully participated in ALL sports and CEESA competitions.
- They consistently show that they are school leaders on Student Council and enjoy belonging to a host of school clubs and community activities.
- CAS guarantees a range of non-academic activities



Common Myths About DP

There is too much stress in the DP

- The statement really speaks about 'pressure,' and its source. Because of the nature of studying six advanced studies courses simultaneously, it is critical that students (and parents) understand that "7's" every term won't be probable.
- As soon as students & parents realize that grades in the DP are indicative of the highest, most rigorous standards in the world, and that maintaining a healthy outlook and an exceptional work ethic are more important than getting all 7's, the stress will dissipate.



Fees and deadlines

- Registrations: will start in September 2027
- Fees:
 - Each subject is paid individually (92 EUR per subject in 2026)
 - IB Service and Postage fee : 120 euros (in 2026)
- Payment: by October 30, 2027
- Contract signed, outlining payment and responsibilities



Next Steps

- Have the conversation about the pathways/ subjects with your children
- Check the websites of preferred Universities about any specific requirements
- Visits to Advisory Classes start next week, where students will choose the pathways



Questions and Comments

DP Coordinator: Viktorija Dimitrovska
viktorija.dimitrovska@nova.edu.mk

Grade 11 Comprehensive Counselor: Bisera Samardjieva
bisera.samardjieva@nova.edu.mk

Grade 12 University and Career Counselor: Irena Filkova
irena.filkova@nova.edu.mk

IBO Public Website: www.ibo.org for information concerning IB schools, university recognition, and services of the IB.



Benchmarking selected IB language courses to the Common European Framework of Reference for Languages



English A: literature English A: language and literature		English B		CEFR level	IELTS	TOEFL
HL	SL	HL	SL			
7				C2	9	118-120
6	7	7		C1	8.5	115-117
	6				8	110-114
5	5	6	7	B2+	7.5	102-109
		5			7	94-101
4	4	5	6	B2	6.5	79-93
					6	6
3	3	3 and 4	5	B1+	5.5	46-59
		2			3 and 4	5
				B1	4.5	32-34



Español A: Lengua y Literatura		Español A: Literatura		Español B		Nivel del MCER	DELE	SIELE
NS	NM	NS	NM	NS	NM			
7						C2	Maestría	
6	7	7				C1	Dominio operativo eficaz	C1
	6							
5	5	6		7		B2+	Avanzado	B2
4	4	5		6		B2		
3	3	3 y 4		5		B1+	Umbral	B1
		2						



Français A : littérature		Français B		Niveau du CECR	DALF/ DELF	TCF
NS	NM	NS	NM			
7				C2	DALF C2	Supérieur avancé
6	7	7		C1	DALF C1	Supérieur
	6					
5	5	6	7	B2+	DELFB2	Intermédiaire avancé
		5		B2		
4	4	5	6			
3	3	3 et 4	5	B1+	DELFB1	Intermédiaire
		2	3 et 4	B1		





**THANK
YOU**