



- **Building From the Inside Out**
- **Developments**
- **Progress**
- **Upcoming Projects**

SPLOST | Construction



Convocation Center & College and Career Academy

Progress at the Clayton County Public Schools Convocation Center continues at a steady pace as the project moves confidently into its final stages. Structural work and interior build-out are advancing as planned, with multiple trades working simultaneously to maintain momentum and keep the schedule aligned.

On the exterior, the facility is nearly complete. Sidewalks are wrapping up, curtain wall installation is finalized, and metal wall panels are substantially in place. The first phase of site paving is underway with the binder installed, and final paving is scheduled to be completed ahead of the building's first major event.

Inside, construction is approaching the finish line. Doors throughout the facility have been completed, with overhead door installations ongoing. Arena drywall soffits are being finalized and painted, while finishes across the building continue to come together. Mechanical, electrical, and plumbing rough-ins are complete, and trim-out work is actively underway—including lighting, switches, air grilles, and plumbing fixtures. Fire alarm device installation is nearing completion, data rack installation is ongoing, and sprinkler heads are being installed throughout the building.

Major systems have reached key milestones, including rooftop equipment startup and elevator installations, both of which are now awaiting final inspections. With these elements in place, the project team is transitioning toward final inspections, testing, and commissioning.

As construction shifts into closeout, the Convocation Center is scheduled to host its first event on February 11, welcoming GHSA. This milestone marks an exciting step forward as the facility prepares to serve students, staff, and the broader community for years to come.

Central Office

The Central Office project continues to move forward with strong momentum. Interior construction across all buildings has been completed by CWI, and the most recent move marked the return of Human Resources and Federal Programs. With that transition complete, all departments are now back in their newly renovated spaces.

Inside Building B, upper-level interior work is largely finished, with the exception of the front lobby and elevator. Interior construction remains active in select areas, including the upper level of Building A, the elevator, front lobby, and boardroom. Over the coming weeks, crews will focus on installing finishes, ceilings, and paint to bring these spaces across the finish line.

Exterior improvements are also taking shape, with steel installation underway for the new front entrance awning. Overall construction is anticipated to conclude in Summer 2026, allowing time for the completion of exterior hardscape and landscape elements.



CCPS Communications Studio



The CCPS Communications Studio is nearing the finish line, with the project approximately 85% complete. What's taking shape is a fully realized television production facility, including a professional studio space, production control room, and central equipment room—each designed to work together seamlessly. A complete studio lighting and production grid has also been installed, setting the foundation for high-quality, districtwide media production.

At this stage, progress is temporarily tied to the completion of the HVAC rooftop unit installation. While that work wraps up, the contractor continues to address punch list items to keep momentum moving forward.

With substantial completion anticipated next month, remaining work will focus on staff equipment training, select flooring items, and furniture installation. Once complete, the studio will serve as a centralized hub for district communications—strengthening CCPS's ability to connect with students, staff, families, and the community through clear, timely, and engaging media.

Lovejoy High



Construction at Lovejoy High School continued to advance steadily this quarter, with meaningful progress across both new construction and renovations. Following Winter Break, the first floor of Block A was successfully turned over to the school, allowing administration and several classrooms to relocate. With that transition complete, Block B has been barricaded and demolition is now underway. Remaining work in Block A is limited to final interior items, including window treatments and select science casework connections.

Elsewhere on campus, site work and utility installation continue to support ongoing building and athletic improvements. At Block G, the new gymnasium is moving into the interior build-out phase as structural, masonry, and roofing work progress. Installation of mechanical, electrical, fire protection, and technology systems is underway, along with stairs, air barriers, and roofing assemblies.

Renovations within the existing building continue in sequence, including restroom upgrades, as campus-wide improvements remain well coordinated. With all required permits in place, the project continues to move forward with strong momentum and no significant delays.



North Clayton High

Work at North Clayton High School continues to move forward with a strong focus on site development across the campus. Grading operations remain active in all major building and field areas, preparing the site for upcoming structural work.

Stormwater infrastructure installation is underway, including drainage systems and pond excavation to support long-term site sustainability. Reinforcing steel continues to be installed for building footings, positioning the project to move into concrete placement once building permits are issued.

Additional work remains active within the former golf course area, where tree removal is complete and grading of building pads continues. Storm drainage installation is progressing, sanitary utility work is scheduled to begin this week, and crews are preparing rebar for the lower portion of the main building.

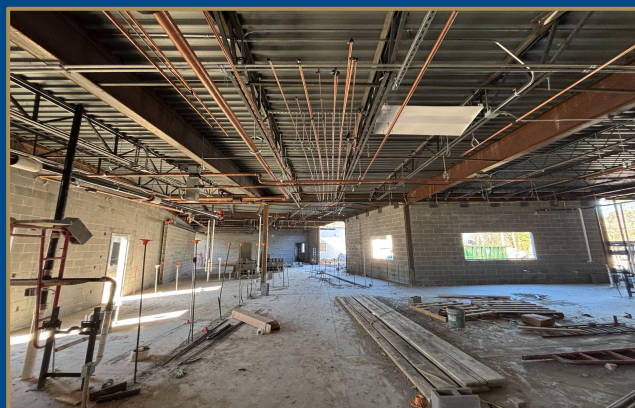
While progress is currently tied to the pending building permit, momentum remains strong. Once approved, work will accelerate into footing installation and vertical construction, marking the next major phase of the project.

Riverdale Early Learning Center

Construction at the Riverdale Early Learning Center continues to advance, with steady progress across roofing, structural, and building systems work. TPO roofing installation is complete on the pod buildings, with remaining areas limited to the corridor radius and the art and music rooms. Building dry-in is anticipated in February, weather permitting.

MEP work remains active throughout the campus. Mechanical, plumbing, fire sprinkler, and electrical installations are progressing across multiple buildings, including overhead and wall rough-ins. Masonry work continues, with exterior brick veneer complete at Building F and ongoing at Building E, while interior CMU wall installation is nearing completion in several areas. Site utility work is also moving forward, including roof drain connections to the underground stormwater system.

Additional site coordination is underway, with the parking lot entrance design submitted by the civil engineer and currently pending approval. Overall, the project continues to move forward as crews prepare the campus for the next phase of construction.



Church Street Elementary

Construction at Church Street Elementary is nearing completion, with most exterior and canopy improvements now finished. Site work and fencing have been fully completed following the removal of the modular classrooms, and both the gym and main canopies are substantially complete with finishes and wood panel installations in place. Final canopy lighting remains pending the fabrication and delivery of custom light housings.

Inside the building, remaining work is limited to the installation of decorative cloud elements in the media center, which is currently being coordinated. The existing monument sign has been removed, and materials for the new sign are on hand as the project moves toward installation. With only these final items outstanding, the project remains on track and is approaching full completion.



Group V HVAC & Roof Replacements



Group V HVAC and roof replacement projects continue to progress steadily, with visible improvements taking shape across multiple campuses. At River's Edge Elementary School, exterior work is nearing completion. The standing seam metal roof and canopy are fully installed, with canopy lighting scheduled for next month. The vestibule access control card reader is in place, and front-of-school landscaping, driveway entrances, fencing, and sensory gardens are complete. The bioretention pond installation is close to wrapping up, while Energy Recovery Unit (ERU) installation remains ongoing.

E. J. Swint Elementary School is seeing substantial completion of major site and building improvements. The LED message sign and car lane canopy with lighting are installed, and interior updates—including classroom and corridor LVT flooring replacement and corridor painting—are complete. The DES restroom, speech room, and sensory rooms are finished, a new retaining wall has been poured, and HVAC Test, Adjustment, and Balance activities are underway. Bus loop revisions from PBK Architects are anticipated in the coming weeks.

At Jonesboro Middle School, technology and systems upgrades continue to advance. Installation of the new intercom system, emergency responder radio antenna repeater, and cellular distributed antenna system is ongoing. The LED message sign has been installed and is awaiting power connection by Georgia Power, while HVAC Test, Adjustment, and Balance work continues.

Group VI HVAC & Roof Replacements

Group VI HVAC and roof renovation work is approaching completion across all three campuses, with most construction activities now finalized and all HVAC equipment installations complete.

At Adamson Middle School, the project is substantially complete, with testing and balancing remaining as the final step. All HVAC systems have been fully replaced, marking a significant upgrade to building performance.

Charles R. Drew High School is transitioning into closeout, with a punch walk anticipated this week following the resolution of all mechanical items.

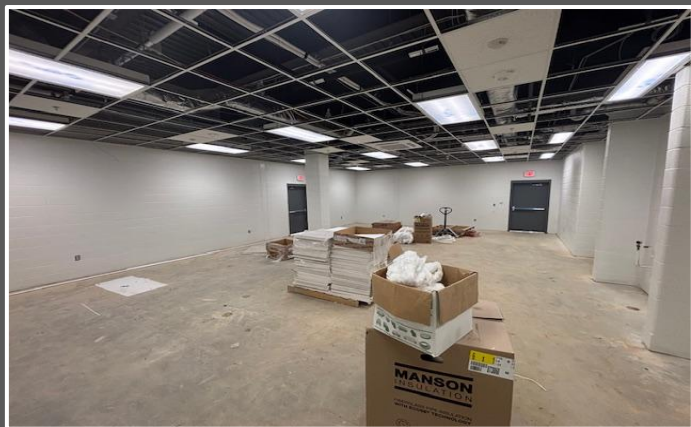
At Smith Elementary School, roof installation is complete, and remaining work is focused on final site and system updates. Energy Recovery Unit installation is pending delivery, while exterior improvements—including the new playground—are underway and expected to be completed next month. Additional outdoor work will follow as scheduling and final design coordination allow.

Once remaining work at Smith Elementary is complete, the Group VI HVAC and Roof Renovation project will reach substantial completion. Together, these upgrades improve comfort, efficiency, and long-term reliability for students and staff across all Group VI schools.

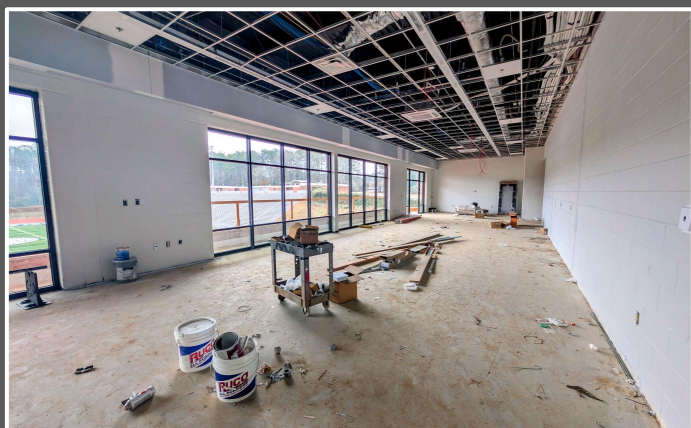




Tara Stadium Field House



Work at the Tara Stadium Field House continues to move forward both inside and outside the facility, with visible progress across multiple areas. All exterior doors are now installed, and window installation is nearing completion, bringing the building close to full enclosure.



Inside, painting has advanced into second coats throughout much of the field house, giving the interior spaces a more finished look. Electrical rough-in work is nearly complete, with trim-out scheduled to follow. On the exterior, brick installation was completed over the recent break—an important milestone in closing in the building envelope.

The project is approximately 80% complete. Fire Marshal inspections were conducted, and once approvals are finalized, work will shift into final finishes, including flooring, ceilings, and paint. Permanent power from Georgia Power is expected to be connected, supporting the project's continued transition toward completion. Overall, construction remains on a steady path with no significant issues to date.

Building From The Inside Out

Construction is about more than buildings—it's about the people those spaces are meant to serve. During the holiday season, the Clayton County Public Schools Construction Department, in partnership with Carroll Daniel Construction, had the opportunity to support the North Clayton High School community in a meaningful way.

Thanksgiving dinners and Christmas gifts were delivered to families connected to North Clayton High School, helping ensure warm meals were shared and holiday moments were celebrated. These deliveries went beyond the job site, reflecting a commitment to care, connection, and showing up for our school communities when it matters most.

Through efforts like this, *Building From The Inside Out* continues to represent what drives our work—supporting students and families not only through construction, but through service, partnership, and compassion.



Upcoming Projects



Gardenwalk Transportation Mechanics Shop

Playground Replacements
(Multiple Locations)

W. A. Fountain - Unidos Dual Language Elementary School